

# Section G

## General Conditions (many different animals)

Sicknesses seen on the outside of the animal

### Injuries



Photo credit: Dr. M. Cattet

See [Section G-1.1](#)

### Emaciation



Photo credit: WCVM

See [Section G-1.2](#)

### Skin cysts



Photo Credit: Dr. I. Stirling

See [Section G-1.3](#)

### Skin ulcers



Photo Credit: Dr. J. Geraci

See [Section G-1.4](#)

## Section G

General Conditions  
(many different animals)

Sicknesses seen on the inside of the animal

**Mouth sores**

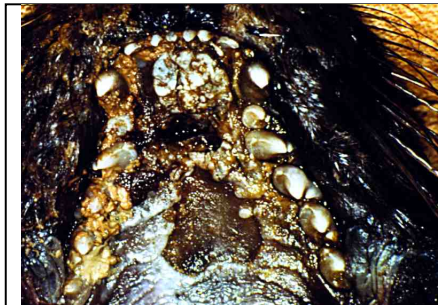


Photo Credit: Dr. J. Geraci

See [Section G-1.5](#)

**Kidney stones**

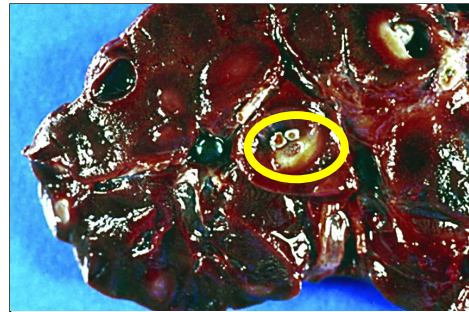


Photo Credit: Dr. J. Geraci

See [Section G-1.6](#)

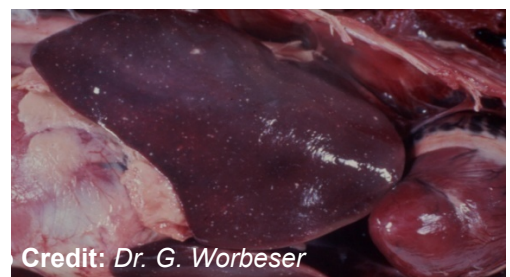
**Pneumonia**



Photo Credit: Dr. D. Martineau

See [Section G-1.7](#)

**Abnormal livers**



Credit: Dr. G. Worbesser

See [Section G-1.8](#)

## Section G

### General Conditions (many different animals)

Sicknesses seen on the inside of the animal

#### Enlarged lymph nodes



Photo Credit: Dr. J.D. St. Aubin

See [Section G-1.9](#)

#### Infections of the spleen



Photo Credit: Dr.  
D. Campbell

See [Section G-1.10](#)

#### Stomach ulcers

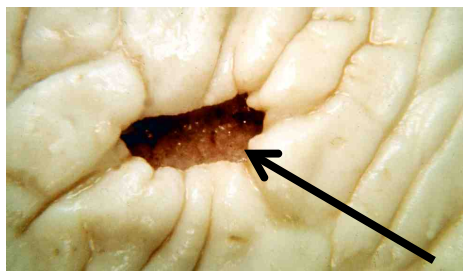


Photo Credit: Dr. J. Geraci

See [Section G-1.11](#)



## G-1.1

### Injuries

Any Animal

#### 1. What do you see ?



(Photo credit: Dr. M. Cattet)

- Wound in the side of a polar bear.



(Photo credit: Dr. J Geraci)

- Scars in the skin of a whale.

#### 2. What are they ?

- Injuries are wounds in skin, muscle and bone that have not killed the animal.
- They may be new or quite old.

Photo Credit: Dr. M. Cattet



Broken tooth in a bear.

Any Animal

Injuries

3. Is it safe to butcher the animal ?



4. Is it safe to eat the animal ?



It is not recommended to eat the animal if it has other sicknesses that could make you sick.

5. Is it safe to feed to dogs ?



It is not recommended to feed dogs anything that is not safe for humans to eat.

For more information go to [H-G.1](#)

## G-1.2

# Emaciation

Any Animal

### 1. What is it ?

- Emaciation occurs when an animal has used up body stores of fat and/or muscle.
- It is due to a long period in which the animal has not had enough to eat.



Photo credit: WCVM

### 2. What does it look like ?



Photo credit: Dr. J. Geraci

- Skinny and weak with excess loose skin.



Photo credit: Dr. L. Measures

- Shoulder bone and ribs stick out (meat and blubber is thin) (emaciated beluga).

# Emaciation

## Any Animal



Photo credit: WCVN

- Emaciation can be caused by many different things such as broken teeth (makes eating difficult), lice, ticks, parasites inside the body or lack of good food.



Photo credit: WCVN

- In starving meat eaters and hoofed animals, bone marrow in the thigh bone will turn from solid white and waxy to yellow or red and more jelly-like.

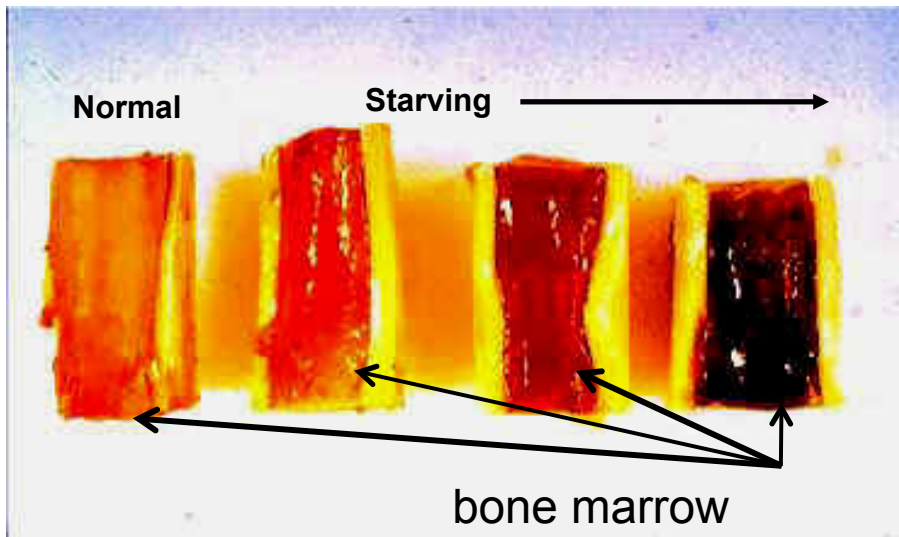


Photo credit: G. Wobeser CCWHC



# Emaciation

Any Animal

3. Is it safe to butcher the animal ?



4. Is it safe to eat the animal ?



Meat should be OK to eat but may be of poor quality.  
It is not recommended to eat the animal if it has other sicknesses or parasites that could make you sick.

5. Is it safe to feed to dogs ?



It is not recommended to feed dogs anything that is not safe for humans to eat.

For more information go to [H-G.2](#)



## G-1.3

Any Animal

# Skin Cysts

## 1. Where are they found ?

- Skin cysts can be found anywhere on the body.
- They can be small (mm) to large (cm) in size.
- Some other types of cysts can be caused by parasites.

## 2. What are they ?

- A skin cyst is a sac filled with air, fluid, pus or other material.
- The cyst is usually “ball-shaped” and does not have any hair on it.

- Some cysts are considered “normal” and do not indicate disease or parasites.



**Any Animal**

**Skin Cyst**

3. Is it safe to skin the animal ?

SAFE

4. Is it safe to eat the animal ?

SAFE

5. Is it safe to feed to dogs ?



For more information go to **H-G.3**

## G-1.4

### Skin Ulcers

Any Animal

#### 1. Where on the body ?

- Ulcers can occur anywhere on the body, but often develop over pressure points where the skin overlying the bone is thin.

#### 2. What are they ?

- An ulcer is an open sore in the skin.
- Ulcers may be red and may ooze blood, clear fluid or pus.
- They can be caused by cuts, scrapes, rubbing or other injuries.



## Any Animal

### Skin Ulcers

3. Is it safe to skin the animal ?

SAFE

4. Is it safe to eat the animal ?

CAUTION

Animals with ulcers should be safe to eat.

However, it is advised to cut ulcers out before eating and check for other sicknesses which may have caused the ulcer.

5. Is it safe to feed to dogs ?

It is not recommended to feed dogs anything you would not eat.



For more information go to [H-G.4](#)

## G-1.5

Any Animal

# Mouth Sores

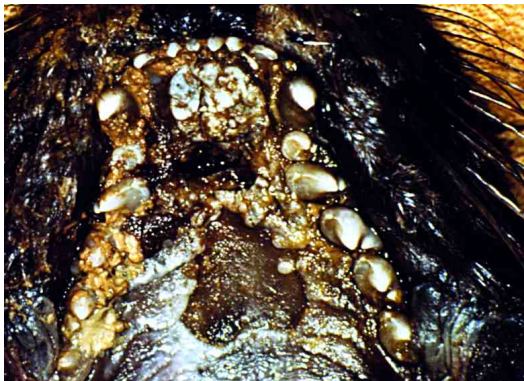
## 1. Where is it found ?

- Mouth sores are found in the mouth of most animals.
- Sores are common in under-fed animals.
- Sores may also be a sign of other sicknesses.

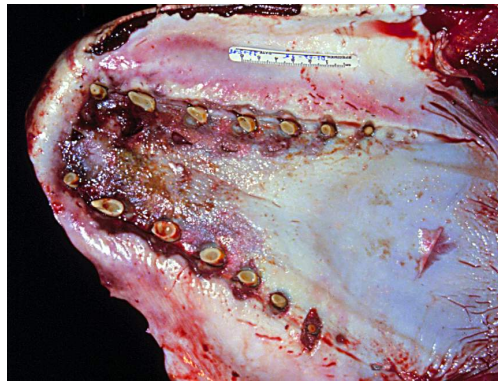
## 2. What is it ?

- With mouth sores the gum tissue around teeth becomes red and sore.
- Gum tissue may shrink making teeth loose.
- Sores in other areas of the mouth may also be found.

Seal - Photo Credit: Dr. J. Geraci



Beluga - Photo Credit: Dr. D. Martineau



Any Animal

Mouth Sores

3. Is it safe to skin the animal ?

SAFE

4. Is it safe to eat the animal ?

CAUTION

It is not recommended to eat the animal if it has other sicknesses that could make you sick.

5. Is it safe to feed to dogs ?

It is not recommended to feed dogs anything not safe for humans to eat.



For more information go to [H-G.5](#)



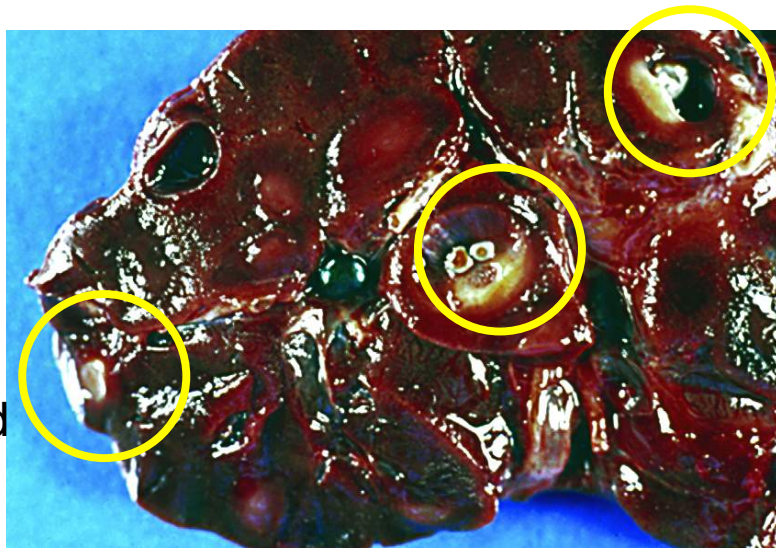
**G-1.6****Kidney Stones**

Any Animal

**1. Where are they found ?**

Photo Credit: Dr. J. Geraci

- Kidney stones are found inside the kidney and sometimes in the urinary tract.
- Stones may block the flow of urine and cause kidney damage.

**2. What are they ?**

- Kidney stones are small, hard objects of different colours, sizes and shapes that form inside the kidney.
- They are made from excess waste products that normally pass out with the urine.



**Any Animal**

**Kidney Stones**

3. Is it safe to skin the animal ?

SAFE

4. Is it safe to eat the animal ?

SAFE

5. Is it safe to feed to dogs ?



For more information go to **H-G.6**

## G-1.7

# Pneumonia

Any Animal

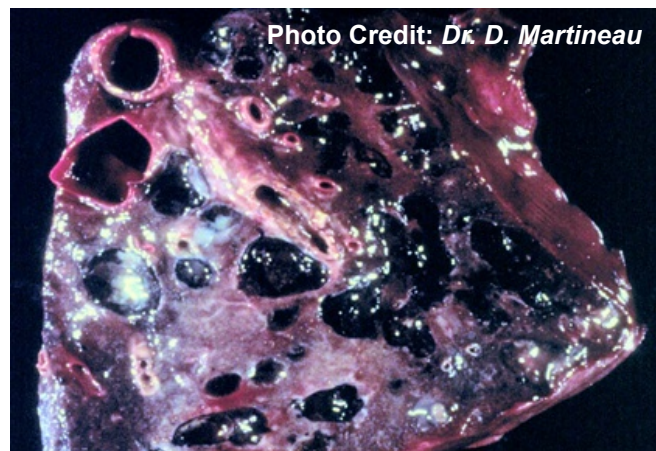
### 1. Where is it found ?



- Pneumonia is found in the lungs and airways.

- A normal lung is pale pink, light in weight and soft.

- Affected lungs may have dark and firm areas and there may be froth in the airways. Pus-filled wounds may be present.



Beluga lung with Pneumonia.

### 2. What is it ?

- Pneumonia occurs when the lungs, and often the airways inside the lungs, are diseased.

- There are many possible causes such as viruses, bacteria and parasites.

Any Animal

## Pneumonia

3. **Is it safe to butcher the animal ?**



Clean your tools, hands and outer clothing in hot soapy water if pneumonia is suspected.

4. **Is it safe to eat the animal ?**



It is not recommended to eat animals suspected of having pneumonia.

It is normal for animals which have been shot in the chest to have froth in the airways of the lungs.

5. **Is it safe to feed to dogs ?**



It is not recommended to feed dogs anything not safe for humans.

For more information go to [H-G.7](#)

## G-1.8

### Abnormal Livers

Any Animal

#### 1. What do you see ?

- You may see flat whitish scars on the surface of the liver or small yellow or white spots scattered throughout the liver.
- Many different things such as parasites, bacteria, or viruses can cause these conditions.

These white to clear areas are likely caused by parasitic worms.

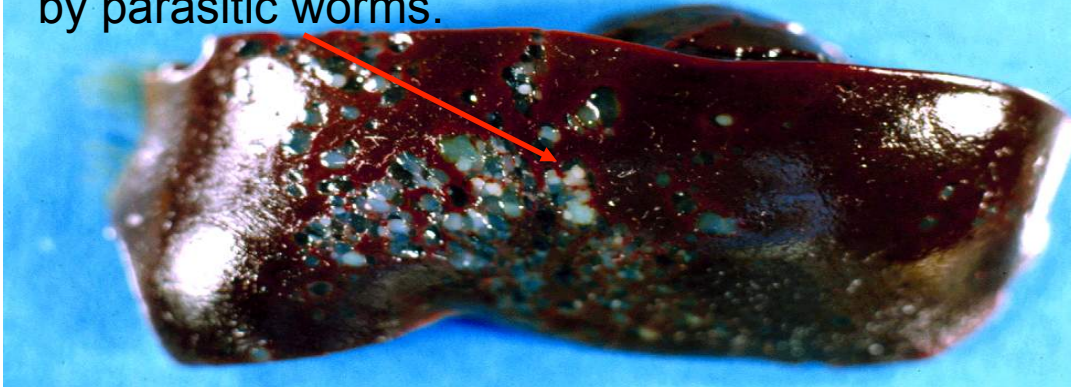


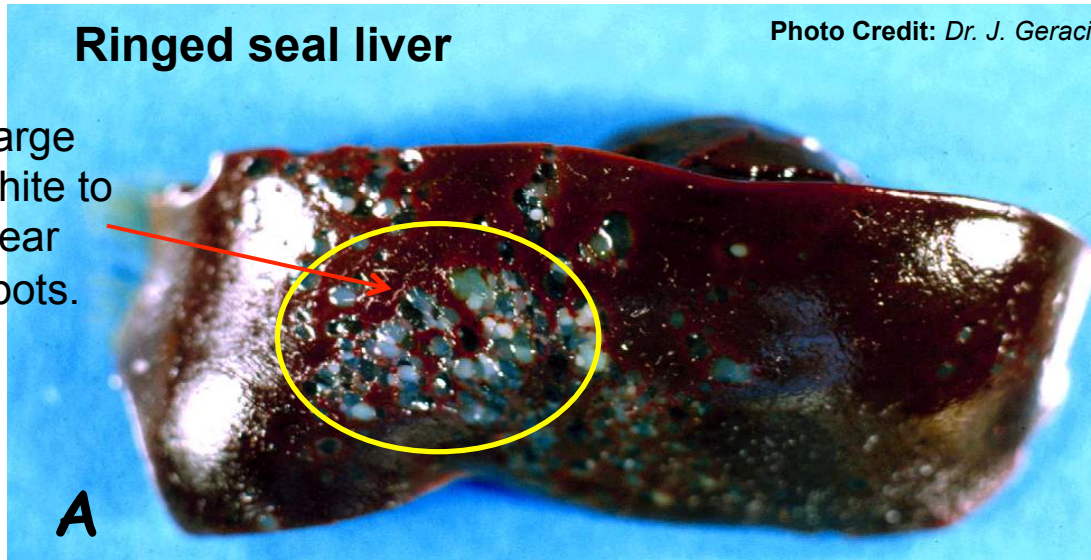
Photo Credit: Dr. J. Geraci

#### 2. Where in the liver do abnormalities occur?

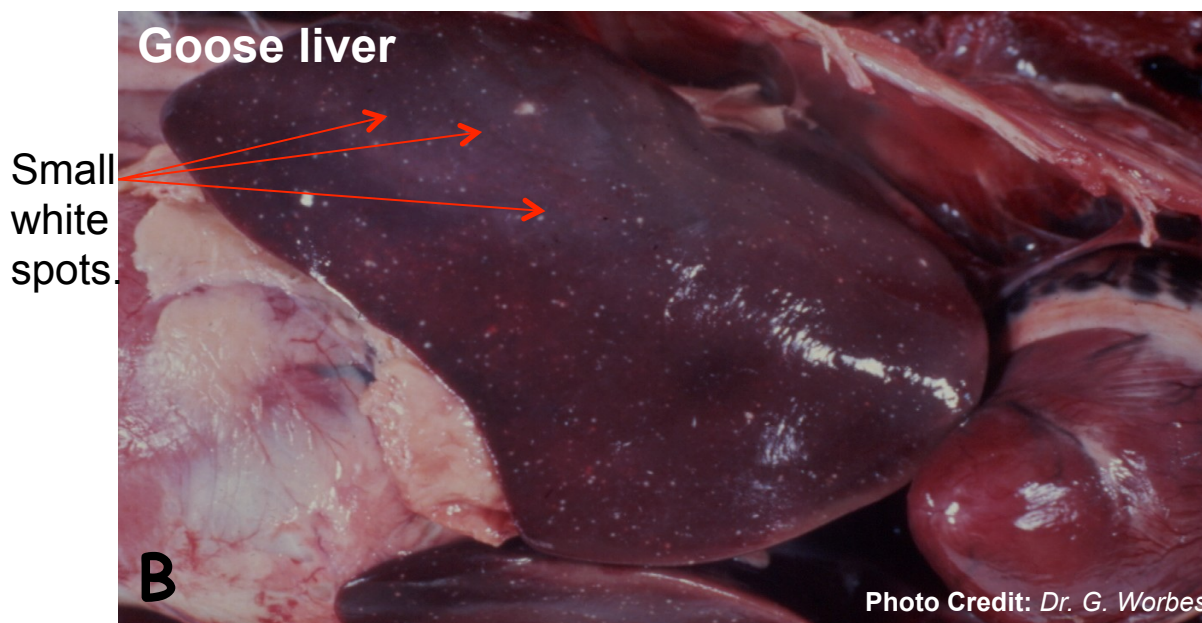
- Spots and scars are generally found on the surface of the liver, but may also be found inside the liver.
- Due to scar tissue, some livers may also be more firm than usual.



## Abnormal Livers



- The MANY small white spots in Photo B are caused by a virus.
- Seeing this type of condition in the liver and possibly in other organs as well may mean that the animal has a virus which MAY make people sick.



Any Animal

## Abnormal Livers

**3. Is it safe to skin the animal ?**

If many white spots (like those in Photo B) are seen, use gloves when handling the animal and wash tools, hands and outer clothing in hot soapy water after use.



**4. Is it safe to eat the animal ?**

It is not recommended to eat the animal if many small white spots are seen throughout the liver (photo B on previous page).



**5. Is it safe to feed to dogs ?**

It is not recommended to feed dogs anything not safe for humans.



For more information go to **H-G.8**



## G-1.9

Any Animal

# Enlarged Lymph Nodes

## 1. Where are they found ?

- Lymph nodes are found throughout the body.

## 2. What are they ?

- Lymph nodes act as filters within the body. They trap and collect bacteria and viruses.
- Lymph nodes are generally cream coloured and often less than 3 cm in length.
- Enlarged lymph nodes generally mean that the animal is sick.

Normal intestine

Greatly enlarged lymph node

Normal spleen

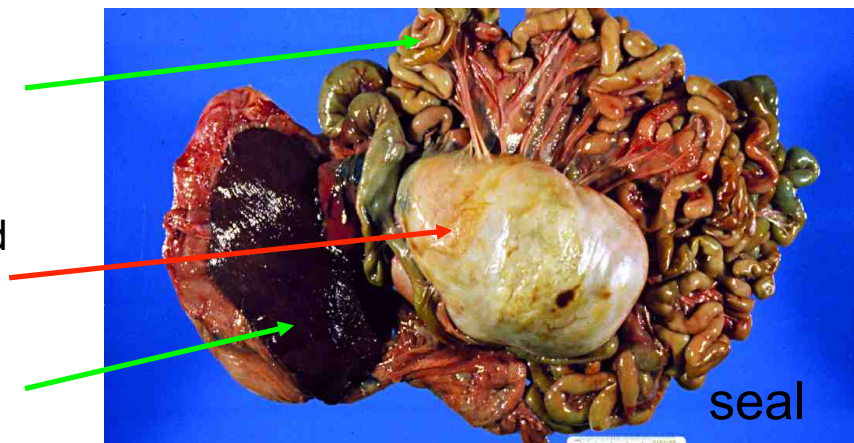


Photo Credit: Dr. JD. St. Aubin

Any Animal

## Enlarged Lymph Nodes

3. **Is it safe to skin the animal ?**



Clean tools, hands and outer clothing in hot soapy water if enlarged lymph nodes are seen.

4. **Is it safe to eat the animal ?**



Greatly enlarged lymph nodes may mean the animal is sick. It is not advised to eat the animal if it appears sick or unusually weak.

5. **Is it safe to feed to dogs ?**



It is not recommended to feed dogs anything that is not safe for humans to eat.

For more information go to [H-G.9](#)

**G-1.10**

Any Animal

**Infections of the Spleen****1. Where is the spleen found ?**

- The spleen is a dark organ found next to the stomach.
- The shape and size is different in different animals, but it is usually curved, oval or round.

**2. What is the spleen ?**

- The spleen filters viruses and bacteria from the blood.
- An enlarged spleen or one that contains many white spots may indicate that the animal is sick.



Photo Credit: Dr. D. Campbell

## Any Animal

### Infections of the Spleen

3. **Is it safe to butcher the animal ?**

Clean your tools, hands and outer clothing in hot soapy water.



4. **Is it safe to eat the animal ?**

It is not recommended to eat the animal if many small white spots are seen throughout the spleen and if the spleen seems much larger than normal.



5. **Is it safe to feed to dogs ?**

It is not recommended to feed dogs anything not safe for humans.



For more information go to [H-G.10](#)

## G-1.11

Any Animal

# Stomach Ulcers

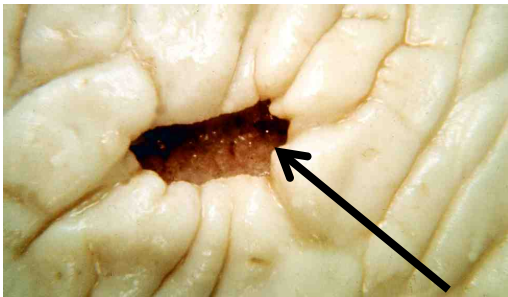
## 1. Where are they found ?

- Ulcers can be found anywhere in stomach.

## 2. What are they ?

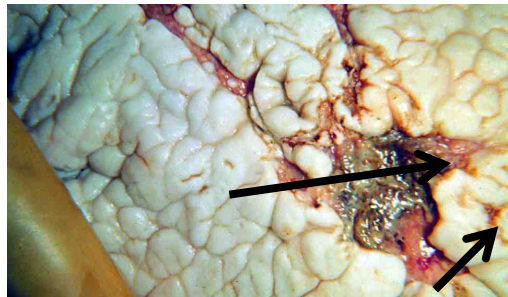
- Stomach ulcers are open sores in the stomach.
- They can be caused by parasites, sharp objects or may be related to stress.
- Stomach acids can prevent these sores from healing.

Photo Credit: Dr. J. Geraci



Ulcers can be found one at a time.

Photo Credit: Dr. J. Geraci



Ulcers can be found in patches.

Any Animal

## Stomach Ulcers

3. Is it safe to butcher the animal ?



4. Is it safe to eat the animal ?



Ulcers do not necessarily mean the animal is unsafe to eat. To be safe, check the animal over before eating to make sure that there are not other parasites or sicknesses which may cause harm.

5. Is it safe to feed to dogs ?



It is not recommended to feed dogs anything that is not safe for people to eat.

For more information go to [H-G.11](#)