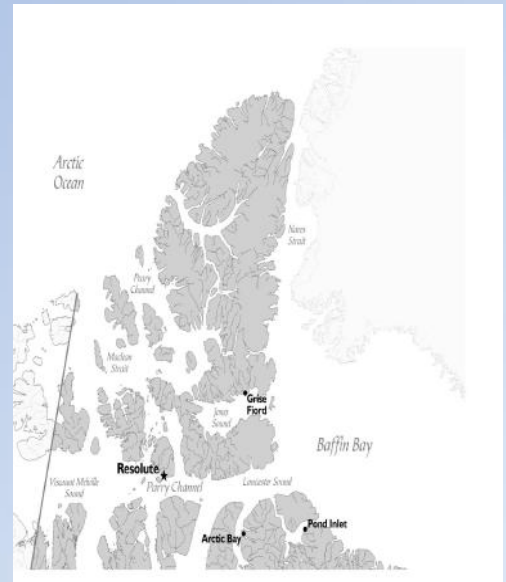


Resolute Bay 2009

The second northernmost community in Canada, Resolute Bay is located in the High Arctic on the south coast of Cornwallis Island. The gateway to the High Arctic, Resolute Bay is the major stopover for expeditions to the North Pole and to Quttinirpaaq (Ellesmere Island) National Park, and a base for scientific research. There is a weather station as well as the Polar Continental Shelf Project research camp located within the community. Resolute's history has the most European influence of all the Nunavut communities. The site was a critical junction along the Northwest Passage, the famed route to Asia sought by European explorers in the 18th and 19th centuries. The community is named after the HMS Resolute, a British ship that was in search of the lost Franklin expedition.

Getting There: First Air operates flights from Iqaluit to Resolute Bay on Wednesday and Saturday and from Edmonton via Yellowknife on Saturday. During the busier summer months, a second flight from Edmonton via Yellowknife is available on Thursdays. Please check with the airline for schedule changes.



(For larger map use zoom tool)

Community Services and Information

Population	239
Region	Qikiqtani
Time Zone	Central
Postal Code	X0A 0V0

Population based on 2007 Nunavut Bureau of Statistics

Area code is 867, unless as indicated.

RCMP General Inquiries 252-0123
 Emergency Only 252-1111

Health Centre 252-3844
Fire Emergency 252-3333
Post Office 252-3959

Schools/College
 Qarmartalik School (K-12) 252-3888
 Arctic College 252-3782

Early Childhood Services
 Day Care 252-3600

Churches
 St. Barnabas Anglican (no phone)

Community Wellness/Recreation
 D N Salluviniq Gym 252-3746
 Community Wellness 252-3401

Local Communications
 Southcamp Inn 252-3737
 Internet (Nunamet) 979-0772
 Cable 252-3854
 Community Radio 252-3683
 Arctic Data (Polarland) 252-3854

Airport 252-3981

Hunters and Trappers Organization 252-3170

Banks
 Interac banking machine available at the Co-op.

Hamlet Office 252-3616
For more information about Qikiqtani regional government department, Inuit organizations, industry associations and development corporations, see Qikitani regional page.

Canada Business-Nunavut
1-877-499-5199



Resolute Bay Businesses

(Area code 867 unless as indicated)

(Inuit)=On NTI Inuit Firm Registry 2009

Accommodation and Dining

Narwhal Hotel

Ph: 252-3968

Fx: 252-3960

narwhal@polarnet.ca

Hotel and restaurant

Hotel & restaurant, tour operators.

South Camp Inn

Aziz Kheraj

Box 300

Ph: 252-3737

Fx: 252-3838

southcamp@netzero.southcampinn.net

Hotel and restaurant, tour operators

Qausuittuq Inns North

Ph: 252-3900

Fx: 252-3766

coophotel@polarland.com

Expediting, Contracting and Equipment Supply

953731 NWT Limited (Inuit)

Aziz Kheraj

Box 300

Ph: 252-3701

Fx: 252-3663

General contracting, aircraft

loading/unloading, sea-lift, heavy

equipment/vehicle renting, construction material.

nkalluk@aol.com

General contracting

Atirktaq Ltd. (Inuit)

Martha Kalluk

Box 13

Ph: 252-3694

Fx: 252-3119

Narwhal Arctic Services

Ph: 252-3925

Fx: 252-3649

Logistical support, vehicle/equipment

rental, general contracting

Retail

Tudjaat Co-operative Limited (Inuit)

Raymond Jean

Box 270

Ph: 252-3854

Fx: 252-3618

Retail, groceries, hardware/tools, gift shop

Technical and Communications

Nunavut Power Corporation

Ph: 252-3626

Electricity

Radio Station (FM 105.1)

Ph: 252-3664

Fx: 252-3683

Broadcasting

Salluvinuq Tusajiuvinga

Ph / Fx: 252-3603

Office supply & service

Tourism and Culture

Nanuk Outfitting Ltd. (Inuit)

Nathaniel Kalluk

Box 98

Ph: 252-3694

Fx: 252-3119

nanuk@polarland.com

Big game sport hunting, outfitting

Box 177

Ph: 252-3630

Fx: 252-3039

zkaronsen@polarland.com

Wildlife viewing, sight seeing, camping, snowmobile trips, dog sledding

Fx: 252-3800

Local information about the land, country foods, outfitting

South Camp Inn

Aziz Kheraj

Box 300

Ph: 252-3737

Fx: 252-3838

Eco-tourism, dog team, boat, ski-doo

Ootoq's & Metiq's Outfitting

Zipporah Aronsen

Resolute Bay Hunters & Trappers Organization (Inuit)

Ph: 252-3170

Canada



Transportation and Shipping

First Air

Ph: 1-800-267-1247 or 867-252-3981

www.firstair.ca

Scheduled & charter flights

Kenn Borek Air Ltd.

Box 210

Ph: 252-3845

Fx: 252-3777

Aircraft charter, freight & cargo

Other Services

Polar Continental Shelf Project

Ph: 252-3872

Fx: 252-3605

Support for scientific projects and traditional knowledge studies

(Inuit)=On NTI Inuit Firm Registry 2009

Canada Business-Nunavut
Ph: 1-877-499-5199 Fx: 1-877-499-5299
www.canadabusiness.ca/nunavut
cnbsc@gov.nu.ca

Canada

