



























Δ°ᄡᄣᄣᄣᄣᄣᄣᄣᄣ  
 ᄣᄣᄣᄣᄣᄣᄣᄣᄣᄣ  
 Aging with dignity in Nunavut

ᄣᄣᄣᄣᄣ ᄣᄣᄣᄣᄣᄣᄣᄣᄣ  
 ᄣᄣᄣᄣᄣᄣᄣᄣᄣᄣᄣᄣᄣᄣᄣᄣᄣ  
 Diversifying our  
 local economies



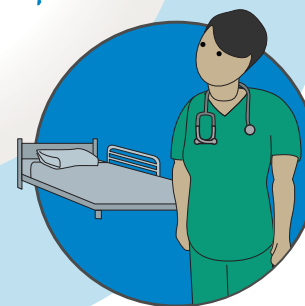
ᄣᄣᄣᄣᄣᄣᄣᄣᄣᄣ  
 ᄣᄣᄣᄣᄣᄣᄣᄣᄣᄣ  
 Expanding the  
 housing continuum



ᄣᄣᄣᄣᄣᄣᄣᄣᄣᄣᄣᄣᄣᄣ  
 ᄣᄣᄣᄣᄣᄣᄣᄣᄣᄣᄣᄣᄣᄣ  
 Reinvesting in education



ᄣᄣᄣᄣᄣᄣᄣᄣᄣᄣᄣᄣ  
 ᄣᄣᄣᄣᄣᄣᄣᄣᄣᄣᄣᄣᄣᄣᄣᄣᄣ  
 Enabling health  
 and healing





**ᐱᑦᑲᑦᑲᑦᑲᑦ ᐱᑦᑲᑦᑲᑦ ᐱᑦᑲᑦᑲᑦ  
ᑲᑲᑲᑦᑲᑦᑲᑦ ᑲᑲᑲᑦᑲᑦ  
\$100,000-ᑲᑲ \$375,000-ᑲᑲ**

ᑲᑲᑲᑦ ᑲᑲᑲᑦᑲᑦ ᑲᑲᑲᑦᑲᑦᑲᑦᑲᑦ ᑲᑲᑲᑦᑲᑦᑲᑦ  
ᐱᑲᑲᑦᑲᑦᑲᑦ ᐱᑲᑲᑦᑲᑦᑲᑦ ᐱᑲᑲᑦᑲᑦᑲᑦ  
ᑲᑲᑲᑦᑲᑦᑲᑦᑲᑦ ᑲᑲᑲᑦᑲᑦᑲᑦ

**Increased Youth and Elder Committee  
funding from \$100,000 to \$375,000**

This funding increase provides financial support  
for Youth and Elders Committees in Nunavut

**ᐱᑦᑲᑦᑲᑦ ᐱᑦᑲᑦᑲᑦ ᐱᑦᑲᑦᑲᑦ ᑲᑲᑲᑦᑲᑦ  
ᐱᑦᑲᑦᑲᑦ ᑲᑲᑲᑦᑲᑦᑲᑦᑲᑦ \$625,000-ᑲᑲ**

ᑲᑲᑲᑦ ᑲᑲᑲᑦᑲᑦ ᑲᑲᑲᑦᑲᑦᑲᑦᑲᑦᑲᑦ \$375,000-  
ᑲᑲ ᑲᑲᑲᑦᑲᑦᑲᑦ ᐱᑲᑲᑦᑲᑦᑲᑦᑲᑦᑲᑦᑲᑦᑲᑦ  
ᐱᑦᑲᑦᑲᑦᑲᑦᑲᑦᑲᑦᑲᑦ ᐱᑲᑲᑦᑲᑦᑲᑦᑲᑦ ᐱᑦᑲᑦᑲᑦᑲᑦ  
ᐱᑦᑲᑦᑲᑦᑲᑦᑲᑦᑲᑦ

**Elders Initiative Program budget increased  
to \$625,000**

This funding increase of \$375,000 provides more financial  
support for initiatives that support Elders activities



**ᐱᑲᑲᑦᑲᑦᑲᑦ ᐱᑲᑲᑦᑲᑦ  
ᐱᑲᑲᑦᑲᑦᑲᑦᑲᑦ ᑲᑲᑲᑦᑲᑦᑲᑦ**

ᐱᑲᑲᑦᑲᑦᑲᑦᑲᑦᑲᑦᑲᑦ ᐱᑲᑲᑦᑲᑦᑲᑦᑲᑦ ᐱᑲᑲᑦᑲᑦᑲᑦᑲᑦ  
ᐱᑲᑲᑦᑲᑦᑲᑦᑲᑦᑲᑦᑲᑦᑲᑦ ᑲᑲᑲᑦᑲᑦᑲᑦᑲᑦ ᐱᑲᑲᑦᑲᑦᑲᑦᑲᑦ  
ᐱᑲᑲᑦᑲᑦᑲᑦᑲᑦᑲᑦᑲᑦ

**Accessibility and universal design principles**

We incorporated accessibility and universal design principles  
into our new housing unit construction plans

**ᐱᑲᑲᑦᑲᑦ ᐱᑲᑲᑦᑲᑦ ᐱᑲᑲᑦᑲᑦᑲᑦᑲᑦ**

ᑲᑲᑲᑦᑲᑦ 9 ᐱᑲᑲᑦᑲᑦᑲᑦᑲᑦᑲᑦᑲᑦᑲᑦ, ᐱᑲᑲᑦᑲᑦ ᐱᑲᑲᑦᑲᑦᑲᑦ  
ᐱᑲᑲᑦᑲᑦᑲᑦᑲᑦᑲᑦᑲᑦ ᐱᑲᑲᑦᑲᑦᑲᑦ ᑲᑲᑲᑦᑲᑦᑲᑦᑲᑦᑲᑦᑲᑦ  
ᑲᑲᑲᑦᑲᑦᑲᑦᑲᑦᑲᑦᑲᑦᑲᑦ

**Reopened the Iqaluit Elders Home**

After a 9-month closure, the Iqaluit Elders Home reopened and Elders  
were able to return from the south or elsewhere in the territory



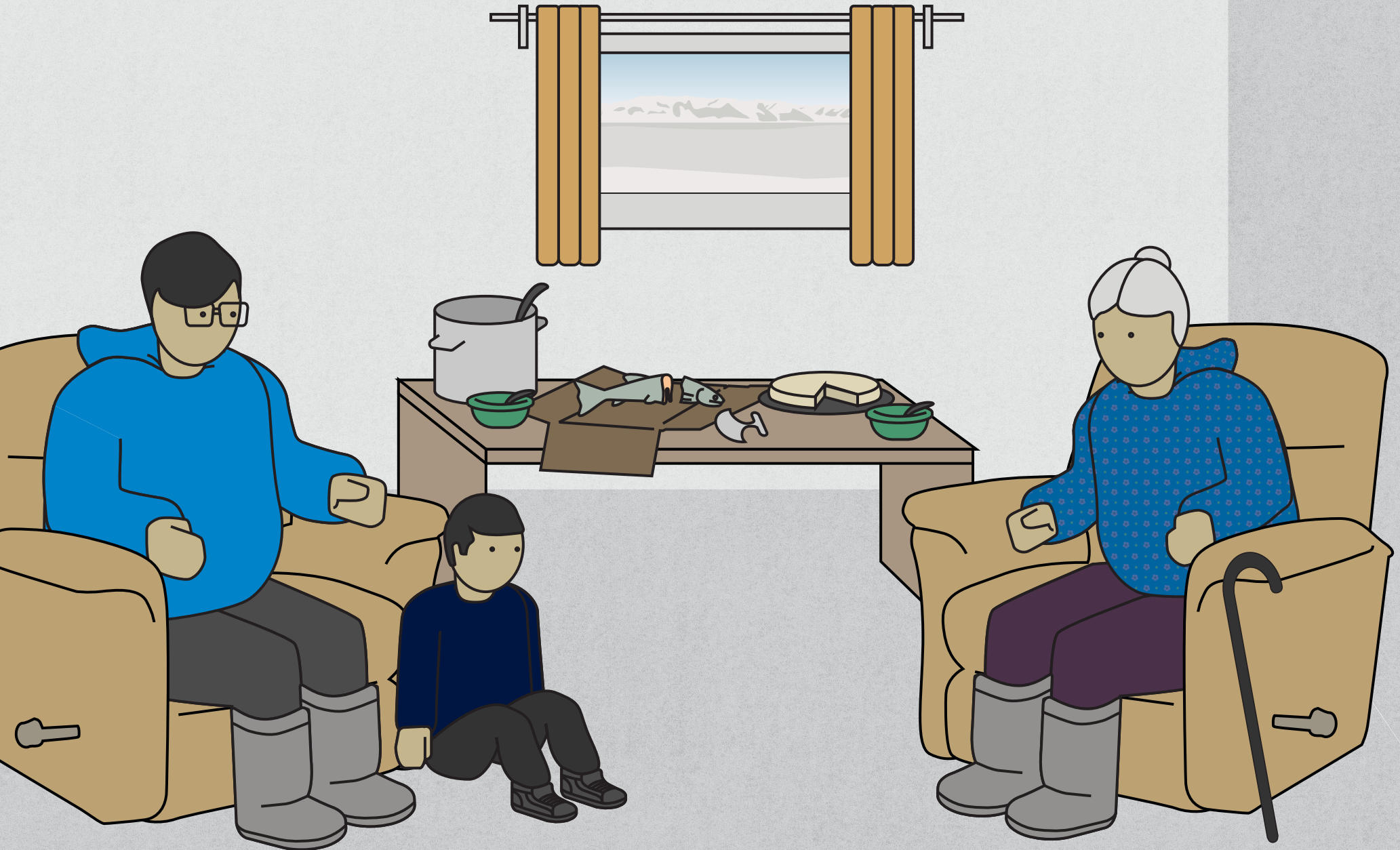












# ግብርና ግብርና ለሚሰጡ ሰው ጥራት ማረጋገጫ Expanding the Housing Continuum

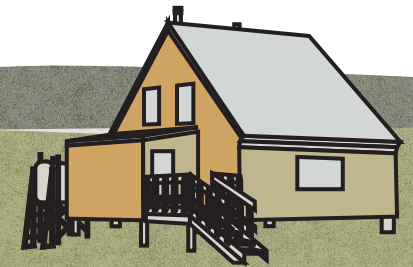
**2022-ፖ ርዕሰ ገጽ**  
**2022 at a Glance**

**\$3 ገርግጽ ስርዓት ስለሚሰጡ ሰው ጥራት ማረጋገጫ**

\$1.5 ገርግጽ ስርዓት ስለሚሰጡ ሰው ጥራት ማረጋገጫ  
\$1.5 ገርግጽ ስርዓት ስለሚሰጡ ሰው ጥራት ማረጋገጫ

**\$3 million in new funding for shelters**

\$1.5 million for homelessness  
\$1.5 million for family safety



**ግብርና ስርዓት 82-ዎች ስለሚሰጡ ሰው ጥራት ማረጋገጫ**

ግብርና ስርዓት ስለሚሰጡ ሰው ጥራት ማረጋገጫ 82 ስለሚሰጡ ሰው ጥራት ማረጋገጫ ስርዓት ስለሚሰጡ ሰው ጥራት ማረጋገጫ

**Outreach to 82 clients**

Outreach was provided to 82 clients experiencing homelessness

**31 ስርዓት ስለሚሰጡ ሰው ጥራት ማረጋገጫ ስርዓት ስለሚሰጡ ሰው ጥራት ማረጋገጫ**

ግብርና ስርዓት ስለሚሰጡ ሰው ጥራት ማረጋገጫ ስርዓት ስለሚሰጡ ሰው ጥራት ማረጋገጫ ስርዓት ስለሚሰጡ ሰው ጥራት ማረጋገጫ ስርዓት ስለሚሰጡ ሰው ጥራት ማረጋገጫ

**31 clients supported to travel to a shelter**

Clients experiencing homelessness were supported to travel to a shelter or to find housing with family in another community

### 51 ᐃᓂᐃᑦ ᐃᖃᑲᓄᐃᑦᑲᑦᑲᑦ ᐃᑦᐃᑦᑲᑦᑲᑦᑲᑦᑲᑦ

ᐃᖃᑲᓄᐃᑦᑲᑦᑲᑦ ᐃᑦᐃᑦᑲᑦᑲᑦᑲᑦᑲᑦ ᓂᑦᐃᑦ ᐃᖃᑲᓄᐃᑦᑲᑦᑲᑦ ᐃᑦᐃᑦᑲᑦᑲᑦᑲᑦᑲᑦ ᐃᑦᐃᑦᑲᑦᑲᑦᑲᑦᑲᑦ

### 51 Inuit employees received staff housing

51 Inuit moved into staff housing from the staff housing waiting list

### ᓂᓄᓂᑦ 3000 ᖃᓂᐃᑦᐃᑦᑲᑦᑲᑦ

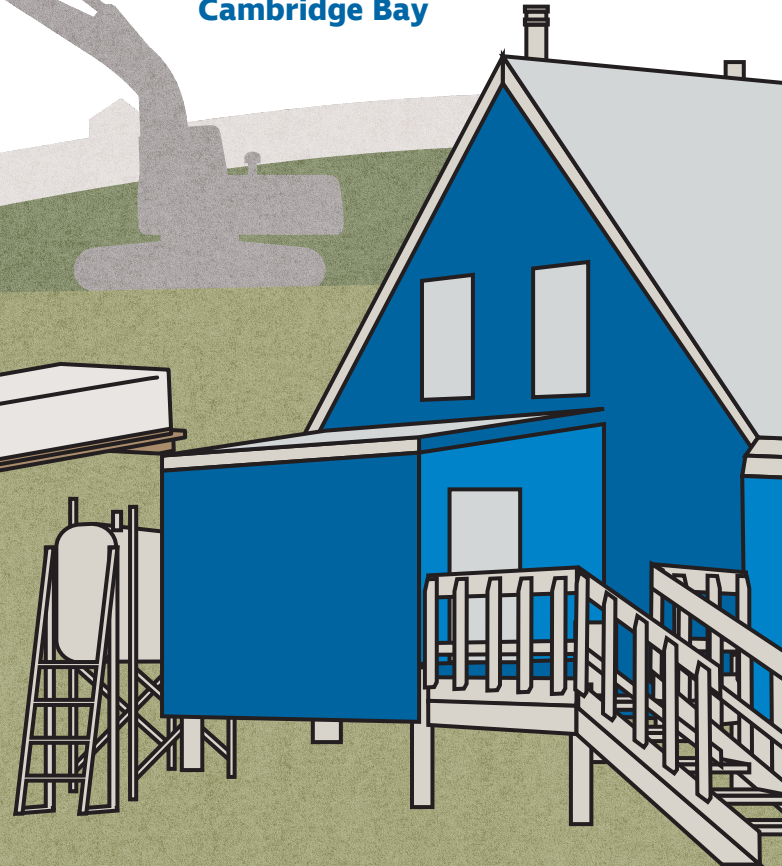
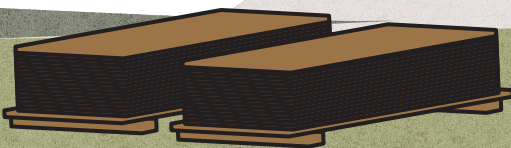
ᐃᑦᐃᑦᐃᑦᑲᑦᑲᑦᑲᑦᑲᑦ 3000-ᓂᑦ ᓂᑦᐃᑦ ᐃᑦᐃᑦᑲᑦᑲᑦᑲᑦ 2030-ᑲᑦ ᑲᑦᐃᑦᐃᑦ

### Nunavut 3000 Strategy

Developed Igluliuqatigiingniq for 3,000 new homes by 2030

### ᐃᖃᑲᓂᑦᑲᑦᑲᑦᑲᑦ ᐃᑦᐃᑦᑲᑦᑲᑦᑲᑦᑲᑦ ᐃᑦᐃᑦᑲᑦᑲᑦᑲᑦᑲᑦ

### Transitional housing opened in Cambridge Bay



### ᐱᑦᑲᑦᑲᑦᑲᑦᑲᑦᑲᑦ ᓂᓄᓂᑦ ᐃᑦᐃᑦᐃᑦᑲᑦᑲᑦᑲᑦ ᐱᑦᑲᑦᑲᑦᑲᑦᑲᑦᑲᑦ

ᐃᑲᑦᐃᑦᐃᑦᑲᑦᑲᑦᑲᑦ ᐃᑦᑲᑦᑲᑦᑲᑦᑲᑦᑲᑦ ᓂᓄᓂᑦ ᐃᑦᐃᑦᐃᑦᑲᑦᑲᑦᑲᑦ ᐱᑦᑲᑦᑲᑦᑲᑦᑲᑦᑲᑦᑲᑦᑲᑦ, ᐃᓂᓂᑦᑲᑦᑲᑦᑲᑦᑲᑦ ᐃᑦᐃᑦᐃᑦᑲᑦᑲᑦᑲᑦ ᑲᑦᑲᑦᑲᑦ, ᑲᓄᑲᑦᑲᑦᑲᑦ 2,000-ᑲᑦ ᑲᑦᐃᑦᐃᑦ 3,000-ᓂᑦ ᐃᑦᐃᑦᑲᑦᑲᑦᑲᑦ

### Partnership with NCC Development

Signed an agreement with NCC Development Limited, an Inuit-owned construction company, to build up to 2,000 of the 3,000 homes











# 121

ᐱᐅᕈᕐᕋᕐᕋᕐᕋᕐᕋᕐ ᕐᕈᕋᕐ  
ᕐᕈᕋᕐᕋᕐᕋᕐᕋᕐ ᕐᕈᕋᕐᕋᕐᕋᕐᕋᕐ

Average number of Nunavummiut turned  
away from shelters each month

# \$4.5

ᕐᕈᕋᕐᕋᕐᕋᕐᕋᕐᕋᕐ **MILLION**

ᕐᕈᕋᕐᕋᕐᕋᕐᕋᕐᕋᕐ ᕐᕈᕋᕐᕋᕐᕋᕐᕋᕐ  
ᕐᕈᕋᕐᕋᕐᕋᕐᕋᕐᕋᕐᕋᕐ ᕐᕈᕋᕐᕋᕐᕋᕐᕋᕐ

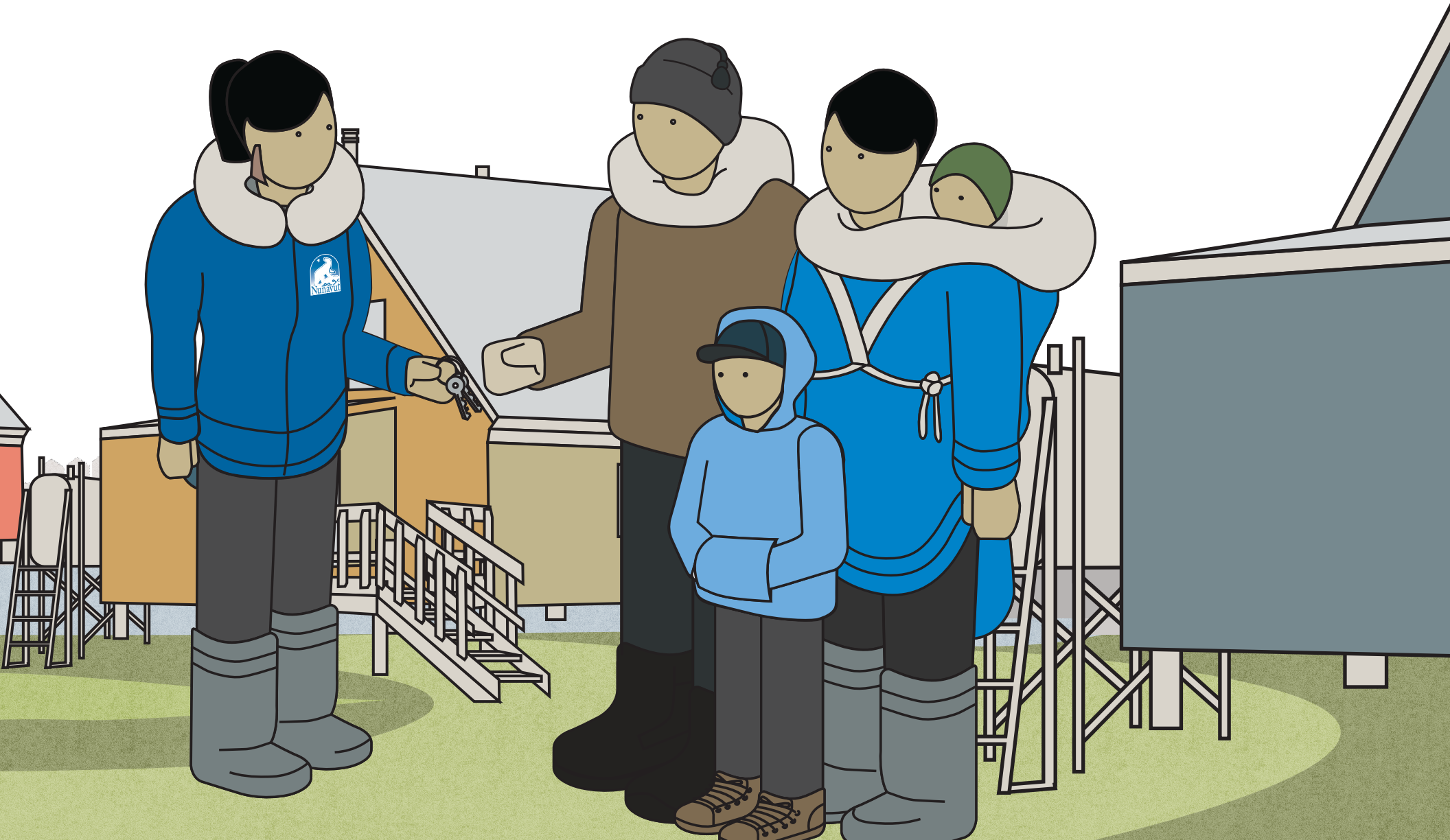
Amount spent on  
homeownership programs



ᕐᕈᕋᕐᕋᕐᕋᕐᕋᕐ 25-ᕐᕈᕋᕐ ᕐᕈᕋᕐᕋᕐᕋᕐ  
ᕐᕈᕋᕐᕋᕐᕋᕐᕋᕐᕋᕐᕋᕐᕋᕐᕋᕐ

Only three of twenty-five communities in  
Nunavut have a homeless shelter













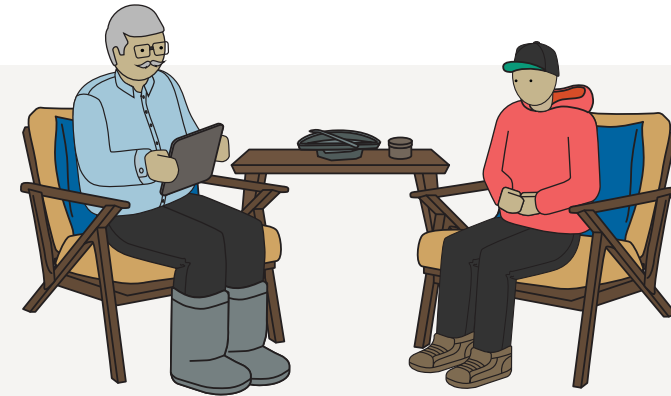
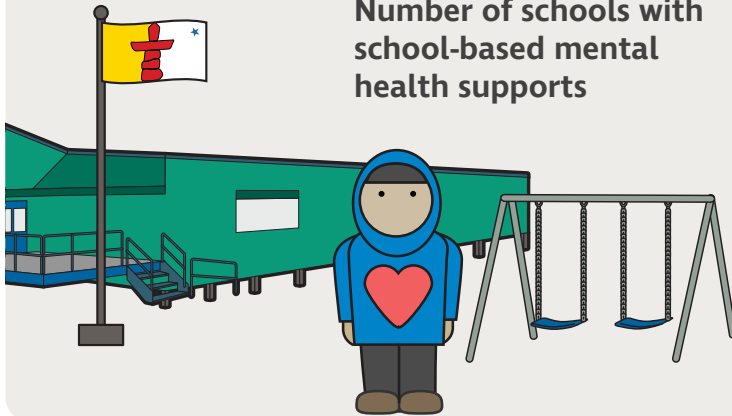




22

ᖃᕿᓴᓂᓴᓴᓴ ᐃᕿᓂᓂᓂᓂᓂ  
ᐃᕿᓂᓂᓂᓂᓂᓂᓂᓂᓂ  
ᐃᓴᓴᓴᓴᓴᓴᓴᓴᓴᓴᓴ  
ᐃᕿᓂᓂᓂᓂᓂᓂᓂᓂᓂ

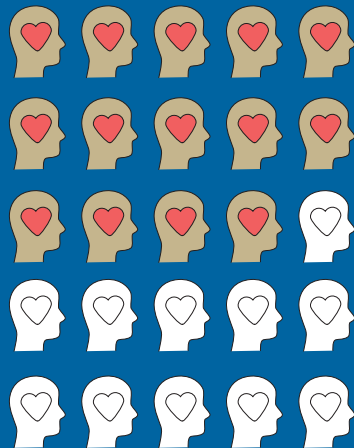
Number of schools with school-based mental health supports



29

ᖃᕿᓴᓂᓴᓴᓴ ᐃᓴᓴᓴᓴᓴᓴ  
ᐃᕿᓂᓂᓂᓂᓂᓂᓂᓂᓂᓂ  
ᓂᓂᓂᓂᓂᓂᓂᓂᓂᓂᓂᓂ

Number of mental health paraprofessionals hired across the territory



14

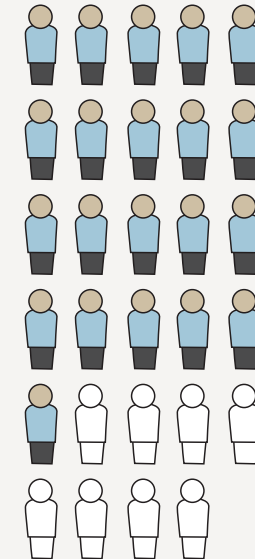
ᖃᕿᓴᓂᓴᓴᓴ ᓂᓂᓂᓂᓂᓂ  
ᐃᓴᓴᓴᓴᓴᓴᓴᓴᓴᓴᓴ

Number of communities with mental health paraprofessionals

21

ᖃᕿᓴᓂᓴᓴᓴ ᐃᓴᓴᓴᓴᓴᓴᓴ  
ᐃᕿᓂᓂᓂᓂᓂᓂᓂᓂᓂᓂᓂ

Number of mental health paraprofessionals who are Inuk







# ᓄᓇᓂᓪ ᓄᓇᓂᓪ ᓄᓇᓂᓪ ᓄᓇᓂᓪ ᓄᓇᓂᓪ ᓄᓇᓂᓪ ᓄᓇᓂᓪ ᓄᓇᓂᓪ *Reinvesting in Education*

2022-ᓂ ᓄᓇᓂᓪ ᓄᓇᓂᓪ  
2022 at a Glance

ᓄᓇᓂᓪ ᓄᓇᓂᓪ ᓄᓇᓂᓪ ᓄᓇᓂᓪ ᓄᓇᓂᓪ ᓄᓇᓂᓪ ᓄᓇᓂᓪ ᓄᓇᓂᓪ ᓄᓇᓂᓪ  
ᓄᓇᓂᓪ ᓄᓇᓂᓪ ᓄᓇᓂᓪ ᓄᓇᓂᓪ ᓄᓇᓂᓪ ᓄᓇᓂᓪ ᓄᓇᓂᓪ ᓄᓇᓂᓪ ᓄᓇᓂᓪ ᓄᓇᓂᓪ

**Largest Team Nunavut  
delegation to the Canada  
Summer Games**

Secured our first gold medal at a  
Canada Games

30 ᓄᓇᓂᓪ  
ᓄᓇᓂᓪ ᓄᓇᓂᓪ ᓄᓇᓂᓪ  
30 new licensed  
childcare spaces



### \$10/Parental Fees Reduced

Local governments are reducing  
 child care fees to \$10 per day as part of the Canada-wide  
 child care agreement

### \$10/day daycare

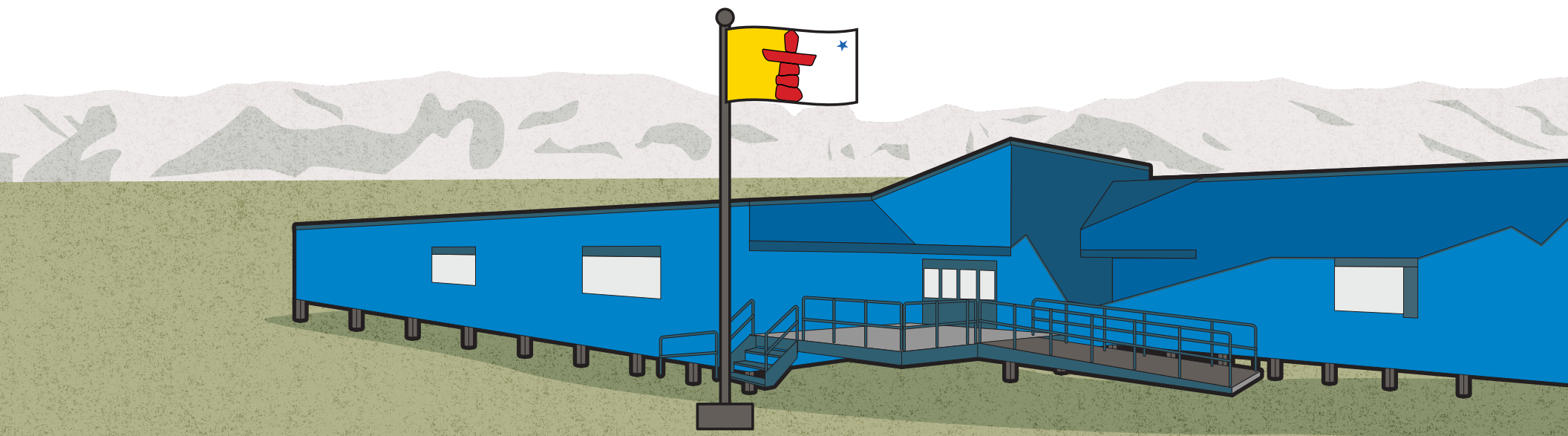
Nunavut was the first jurisdiction to implement  
 \$10/day parental fees as part of the Canada-wide  
 Child Care Agreement

### \$2 Million

Invested in tournaments, camps, and clinics for territorial and  
 regional sport events for Nunavut youth

### \$2 Million

Invested in tournaments, camps, and clinics for territorial and  
 regional sport events for Nunavut youth



### Mental Health Support in Schools

Four additional communities are receiving  
 school based mental health support services

### Mental health support in schools

Four additional communities are receiving  
 school based mental health support services

### Tulliniliara

Created a new reading series focusing on life skills and  
 career development

### Tulliniliara

Created a new reading series focusing on life skills and  
 career development

## የግብይት ዓላማዎች

**ትምህርት ለእናንዳችንም ለሕዝብ ለግብይት ለማብረቅ የሚያስፈልገውን ግብይት ለማሳደግና ለማቆም ለማድረግ ነው። ይህም ለሕዝብ ለማብረቅ ለማድረግ ነው።**

- ማህበራዊ እና ልማት ዓላማዎችን ለማሟላት የሚያስፈልገውን ግብይት ለማሳደግና ለማቆም
- የትምህርት ስራዎችን ለማረጋገጥና ለማቆም
- ለማህበራዊ እና ልማት ዓላማዎችን ለማሟላት የሚያስፈልገውን ግብይት ለማሳደግና ለማቆም
- የትምህርት ስራዎችን ለማረጋገጥና ለማቆም
- ለማህበራዊ እና ልማት ዓላማዎችን ለማሟላት የሚያስፈልገውን ግብይት ለማሳደግና ለማቆም

## Strategic Outcomes

**The *Katuujiluta* Mandate sets out key strategic outcomes for reinvesting in education in Nunavut. We report our progress and achievements against these outcomes.**

- Stronger childhood foundations for Inuit identity, resilience, and learning over time
- Higher rates of attendance and school completion
- Stronger academic achievements
- Improved linkage between available jobs and post-secondary education and training in the territory
- Higher rates of post-secondary education and employment following graduation
- Enduring partnerships with Inuit organizations, education authorities, and other levels of government to encourage and support early learning, educational attainment, and career development





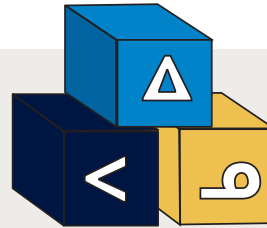






1,233

ᖃᖃᖃᖃᖃᖃᖃᖃ ᖃᖃᖃᖃᖃᖃᖃᖃ  
ᖃᖃᖃᖃᖃ ᖃᖃᖃᖃᖃᖃᖃᖃᖃ  
ᖃᖃᖃᖃᖃ  
Child care spaces  
in Nunavut

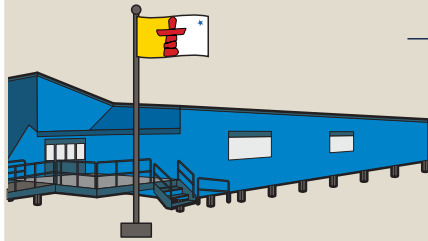


75

ᖃᖃᖃᖃᖃᖃᖃ ᖃᖃᖃᖃᖃ  
ᖃᖃᖃᖃᖃᖃᖃᖃᖃ ᖃᖃᖃᖃᖃᖃᖃᖃᖃ  
ᖃᖃᖃᖃᖃᖃᖃᖃᖃᖃᖃᖃᖃ  
ᖃᖃᖃᖃᖃᖃᖃᖃᖃᖃᖃ  
Number of GN employees that  
completed Inuktitut training

219

ᖃᖃᖃᖃᖃᖃᖃᖃ ᖃᖃᖃᖃᖃᖃᖃᖃᖃ  
ᖃᖃᖃᖃᖃᖃᖃᖃᖃᖃᖃ ᖃᖃᖃᖃᖃᖃᖃᖃᖃ  
Number of Inuktitut-speaking  
teachers



272

ᖃᖃᖃᖃᖃᖃᖃᖃ ᖃᖃᖃᖃᖃᖃᖃᖃᖃᖃᖃ  
ᖃᖃᖃᖃᖃᖃᖃᖃᖃᖃᖃᖃᖃᖃᖃᖃᖃᖃ  
Number of Inuit educators  
employed

228

ᖃᖃᖃᖃᖃᖃᖃᖃᖃᖃᖃᖃᖃᖃᖃᖃᖃᖃᖃᖃᖃᖃᖃ  
ᖃᖃᖃᖃᖃᖃᖃᖃᖃᖃᖃᖃᖃᖃᖃᖃᖃᖃᖃᖃᖃᖃᖃ  
ᖃᖃᖃᖃᖃᖃᖃᖃᖃᖃᖃᖃᖃᖃᖃᖃᖃᖃᖃᖃᖃᖃᖃ  
Number of Inuit non-educator  
school staff



525

ᖃᖃᖃᖃᖃᖃᖃᖃᖃ ᖃᖃᖃᖃᖃᖃᖃᖃᖃᖃᖃᖃᖃᖃᖃᖃᖃᖃᖃ  
ᖃᖃᖃᖃᖃᖃᖃᖃᖃᖃᖃᖃᖃᖃᖃᖃᖃᖃᖃᖃᖃᖃᖃ  
Number of employees receiving the Inuktitut  
Language Incentive



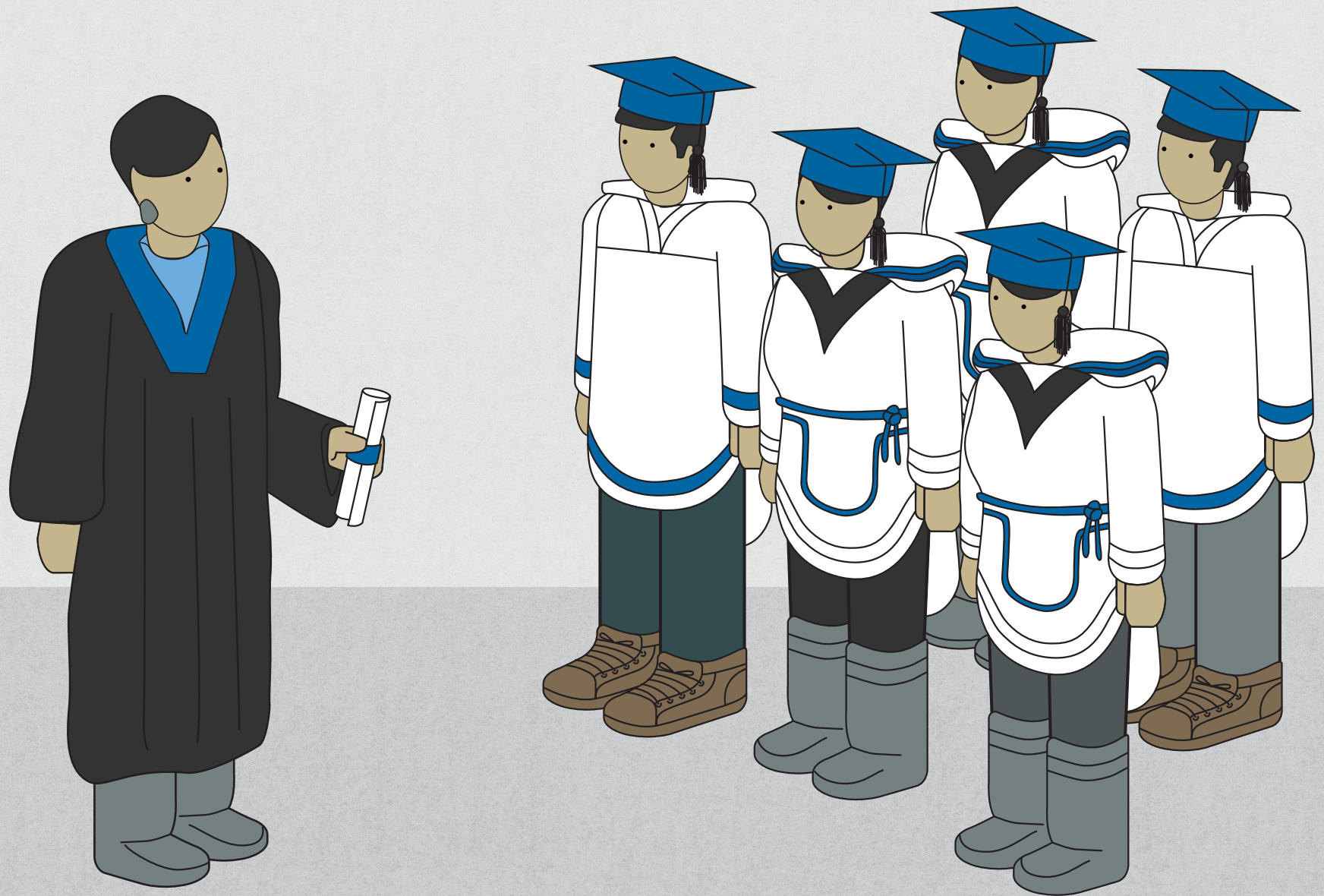
581

ᖃᖃᖃᖃᖃᖃᖃᖃᖃᖃᖃᖃᖃᖃᖃᖃᖃᖃᖃᖃᖃᖃᖃ  
ᖃᖃᖃᖃᖃᖃᖃᖃᖃᖃᖃᖃᖃᖃᖃᖃᖃᖃᖃᖃᖃᖃᖃ  
ᖃᖃᖃᖃᖃᖃᖃᖃᖃᖃᖃᖃᖃᖃᖃᖃᖃᖃᖃᖃᖃᖃᖃ  
Number of students enrolled in  
Nunavut Arctic College

31

ᖃᖃᖃᖃᖃᖃᖃᖃᖃ ᖃᖃᖃᖃᖃᖃᖃᖃᖃᖃᖃᖃᖃᖃᖃᖃᖃᖃᖃ  
ᖃᖃᖃᖃᖃᖃᖃᖃᖃᖃᖃᖃᖃᖃᖃᖃᖃᖃᖃᖃᖃᖃᖃ  
Number of Inuit instructors at the  
Nunavut Arctic College





# ᓄᓚᓂᓐ ᓂᓂᓂᓐ ᓂᓂᓂᓐ ᓂᓂᓂᓐ

## Diversifying our Local Economies

2022-ᓂ ᓂᓂᓂᓐ

2022 at a Glance

### ᓂᓂᓂᓐ ᐱᓂᓂᓐ

ᓂᓂᓂᓐᓂᓐ ᐱᓂᓂᓐᓂᓐ  
ᓂᓂᓂᓐᓂᓐ ᐱᓂᓂᓐᓂᓐ  
ᓂᓂᓂᓐᓂᓐ

#### **IQaluk program**

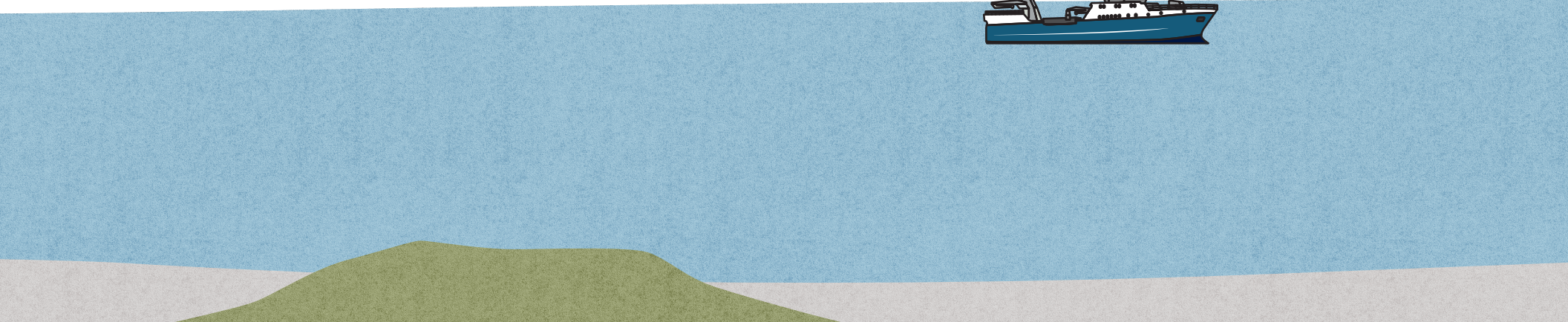
Fisheries development training  
began in Taloyoak

### ᓂᓂᓂᓐᓂᓐ ᓂᓂᓂᓐ ᓂᓂᓂᓐ

ᓂᓂᓂᓐᓂᓐ ᓂᓂᓂᓐᓂᓐ  
ᓂᓂᓂᓐᓂᓐ ᓂᓂᓂᓐᓂᓐ  
ᓂᓂᓂᓐᓂᓐ

#### **CruiseReady! workshops**

We offered CruiseReady! Workshops to any hamlets that  
receive cruise ships





ᐱᓕᓕᓄᓇᐱᓄᓇ ᐱᓕᓕᓄᓇᐱᓄᓇ ᐱᓕᓕᓄᓇᐱᓄᓇ ᐱᓕᓕᓄᓇᐱᓄᓇ ᐱᓕᓕᓄᓇᐱᓄᓇ

ᐱᓕᓕᓄᓇᐱᓄᓇ ᐱᓕᓕᓄᓇᐱᓄᓇ ᐱᓕᓕᓄᓇᐱᓄᓇ ᐱᓕᓕᓄᓇᐱᓄᓇ ᐱᓕᓕᓄᓇᐱᓄᓇ ᐱᓕᓕᓄᓇᐱᓄᓇ ᐱᓕᓕᓄᓇᐱᓄᓇ

Three-year Program Partnership on literacy training

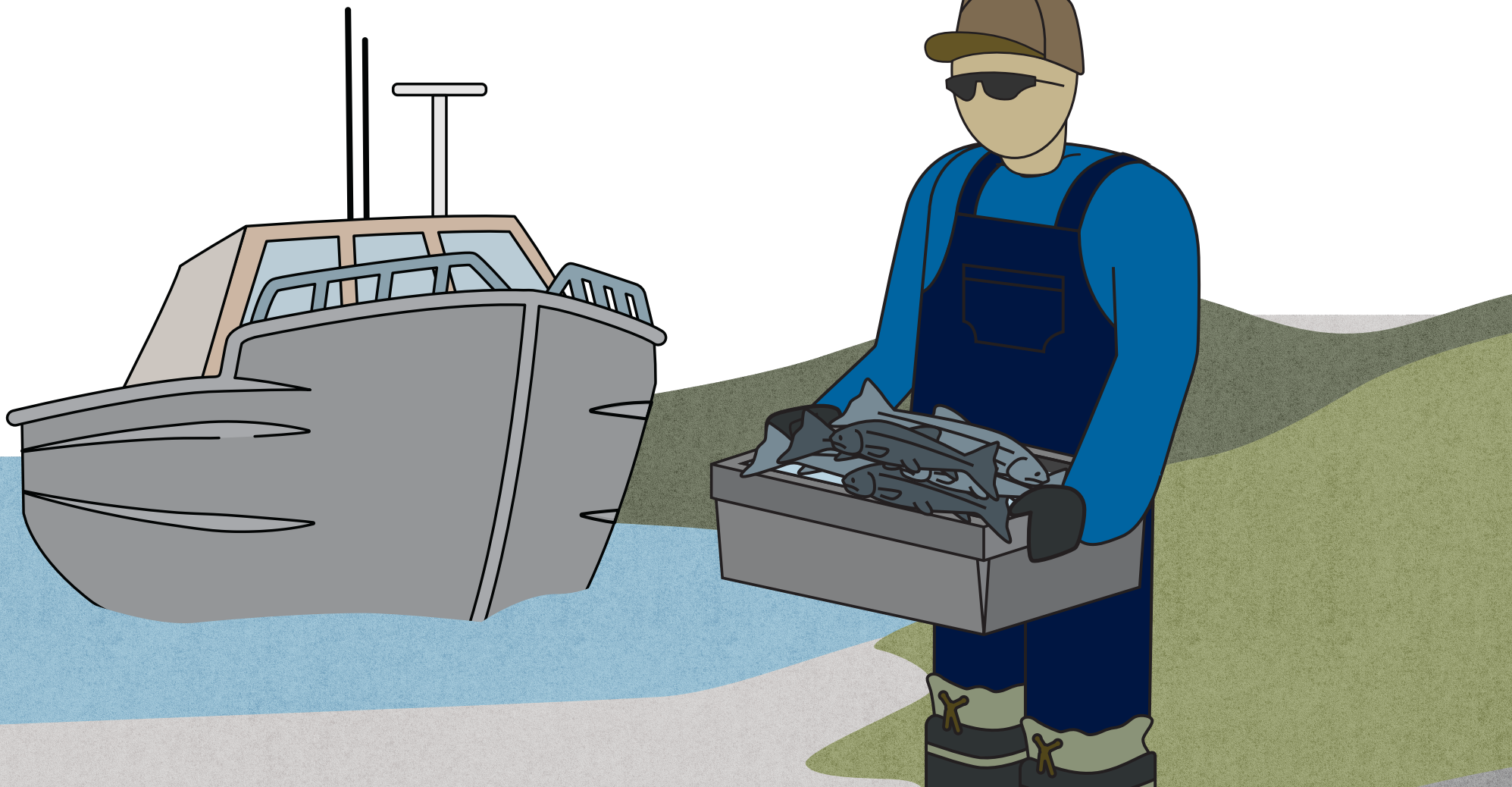
Partnership signed with Iliitaqsiniq to provide literacy training and personal financial literacy initiatives

ᐱᓕᓕᓄᓇᐱᓄᓇ ᐱᓕᓕᓄᓇᐱᓄᓇ ᐱᓕᓕᓄᓇᐱᓄᓇ ᐱᓕᓕᓄᓇᐱᓄᓇ

ᐱᓕᓕᓄᓇᐱᓄᓇ ᐱᓕᓕᓄᓇᐱᓄᓇ ᐱᓕᓕᓄᓇᐱᓄᓇ ᐱᓕᓕᓄᓇᐱᓄᓇ ᐱᓕᓕᓄᓇᐱᓄᓇ

Opened RBC agency bank branch

Branch opened at the Uqqurmiut Arts and Crafts in Pangnirtung































ᓄᓇᓅᓪ ᓂᓴᓴᓂ  
Government of Nunavut  
Nunavut Kavamanga  
Gouvernement du Nunavut

[www.gov.nu.ca](http://www.gov.nu.ca)

