













## INTRODUCTION: THE 2008 - 2009 CAPITAL ESTIMATES

The Capital Estimates presented to the Legislative Assembly represent the Government of Nunavut's proposed appropriations for the 2008-2009 fiscal year for planned capital. The amounts represent all capital expenditures to be incurred during the twelve-month period beginning April 1, 2008, and ending March 31, 2009.

The Capital Estimates indicate the total requirement for individual departments and the Nunavut Housing Corporation. The expenditures related to each department are further described by branch and project.

The Legislative Assembly of Nunavut is requested to appropriate funds at the departmental level for capital expenditures for the fiscal year ending March 31, 2009. Further details of expenditures at the branch level and by type of expenditure are provided for information, but do not require specific Legislative Assembly approval.

Departmental Mission Statements and Branch descriptions are provided to clarify the purpose of capital expenditures and the roles and responsibilities of departments and branches.

The Detail of Capital sections of this document provide the 2008-2009 budget for all proposed capital projects in the 2008-2009 fiscal year. Data for the 2007-2008 Prior Year and 2009-2013 Capital Plan are shown for multiple year projects for which an amount is included in the 2008-2009 budget.

Detailed information relevant to the Capital Estimates is provided in the following areas for each department, as applicable:

- Accounting Structure Chart (how the department's financial accounts are organized)
- Department Summary
- Branch Summary
- Detail of Capital (by project and region)

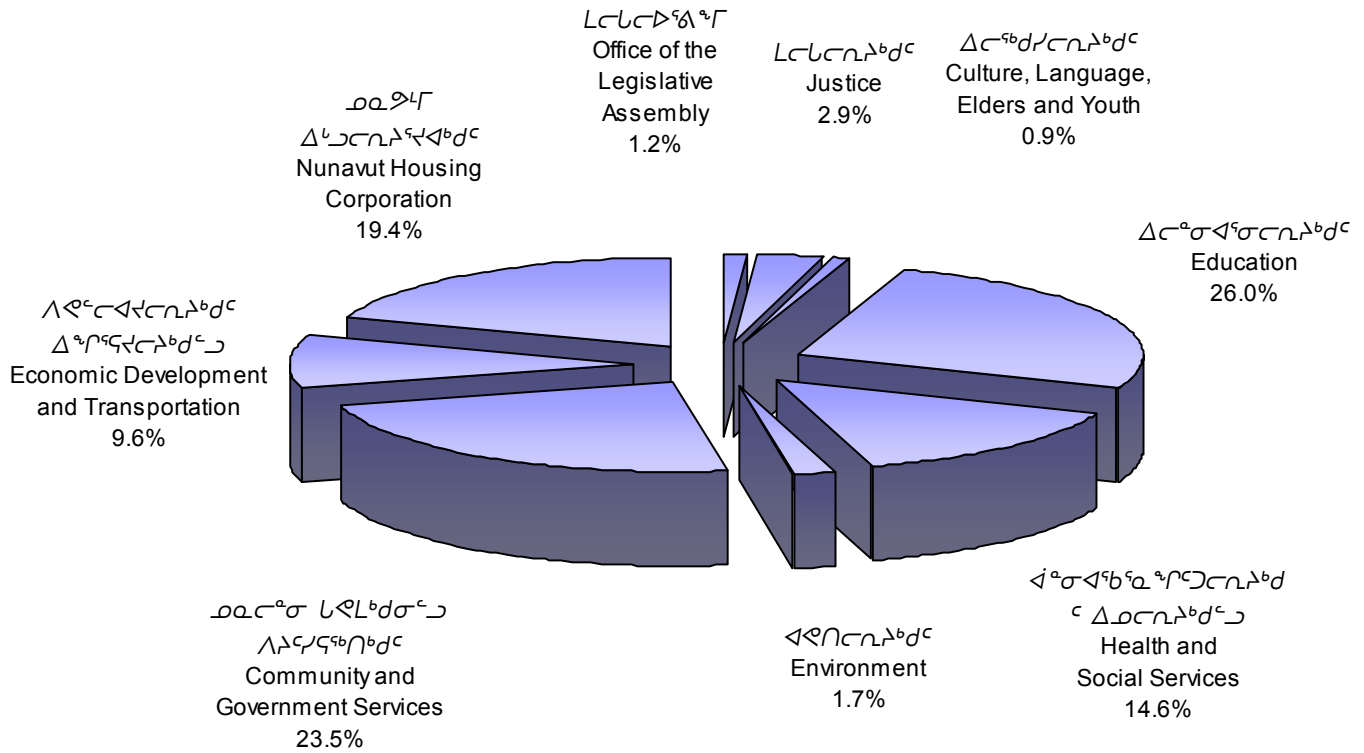
The financial information in the Capital Estimates is presented on a comparative basis, at the government, department and branch level for 2007-2008 Capital Estimates and 2007-2008 Revised Estimates. The 2007-2008 Revised Estimates include the 2007-2008 Capital Estimates and appropriations approved through the 2007-2008 Supplementary Appropriation (Capital) Act No. 1 and Special Warrants. In addition, information on the 2006-2007 actuals is provided.

Appendix IV provides a detailed listing of the third party funding of capital projects to be completed by Community and Government Services for the Gas Tax Fund; Municipal Rural Infrastructure Fund; and the Strategic Infrastructure Fund; and third party funding of capital projects to be completed by Economic Development and Transportation for the Airport Capital Assistance Program.

Appendix V provides a comparison of multi-year capital projects to original budget, revised budget and actual cost for all projects completed in 2006-2007.

For further clarification of terms used in the Capital Estimates, please consult the glossary in Appendix I.

# ᐱᓕᐱᓕᐱᓕ ᐱᓕᐱᓕᐱᓕ ᐱᓕᐱᓕᐱᓕ WHERE THE CAPITAL DOLLARS WILL BE SPENT











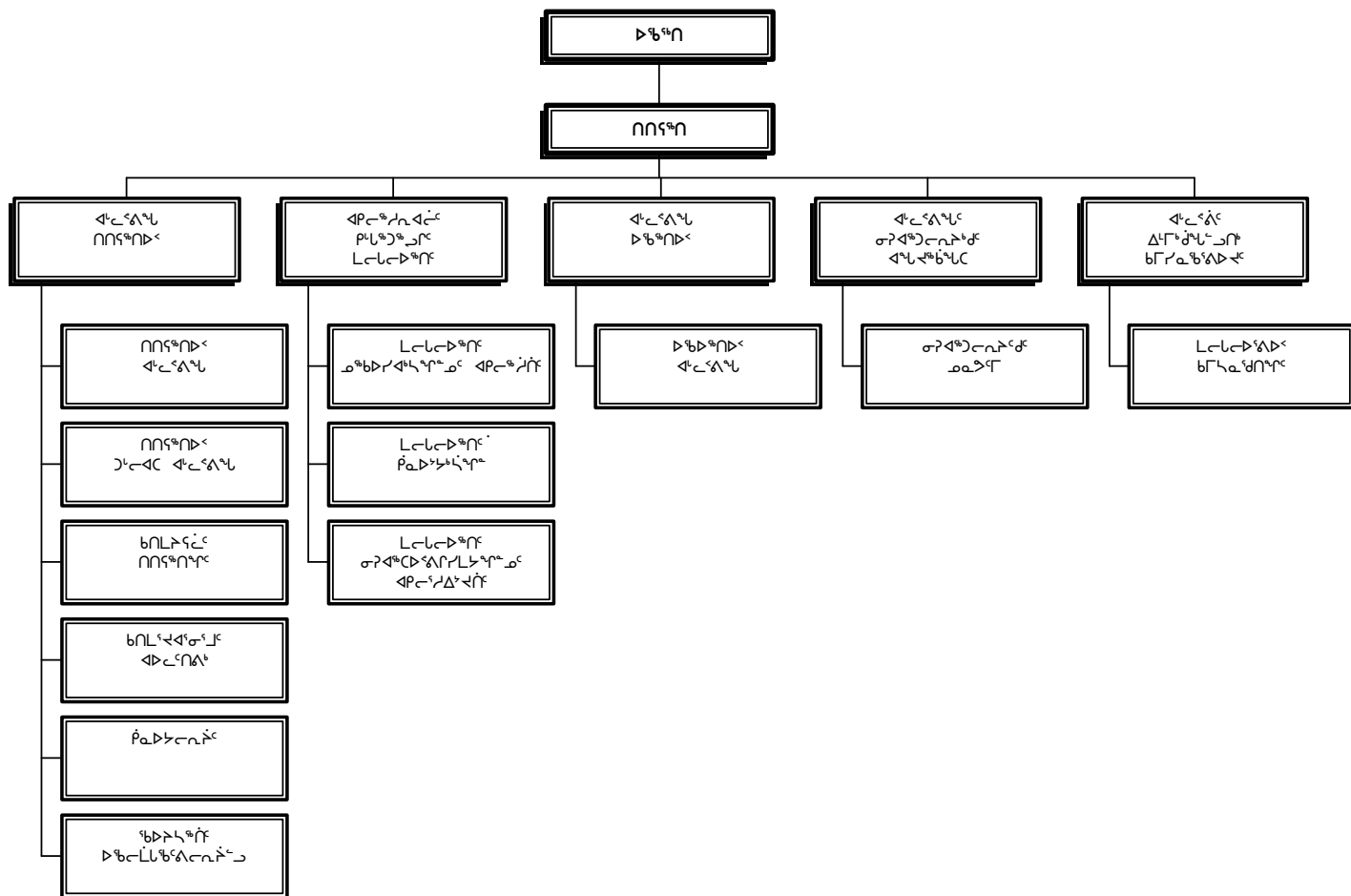


ᐱᐸᐸᐸᐸᐸᐸᐸᐸᐸ  
ᐸᐸᐸᐸᐸᐸᐸᐸᐸ



OFFICE OF THE  
LEGISLATIVE ASSEMBLY

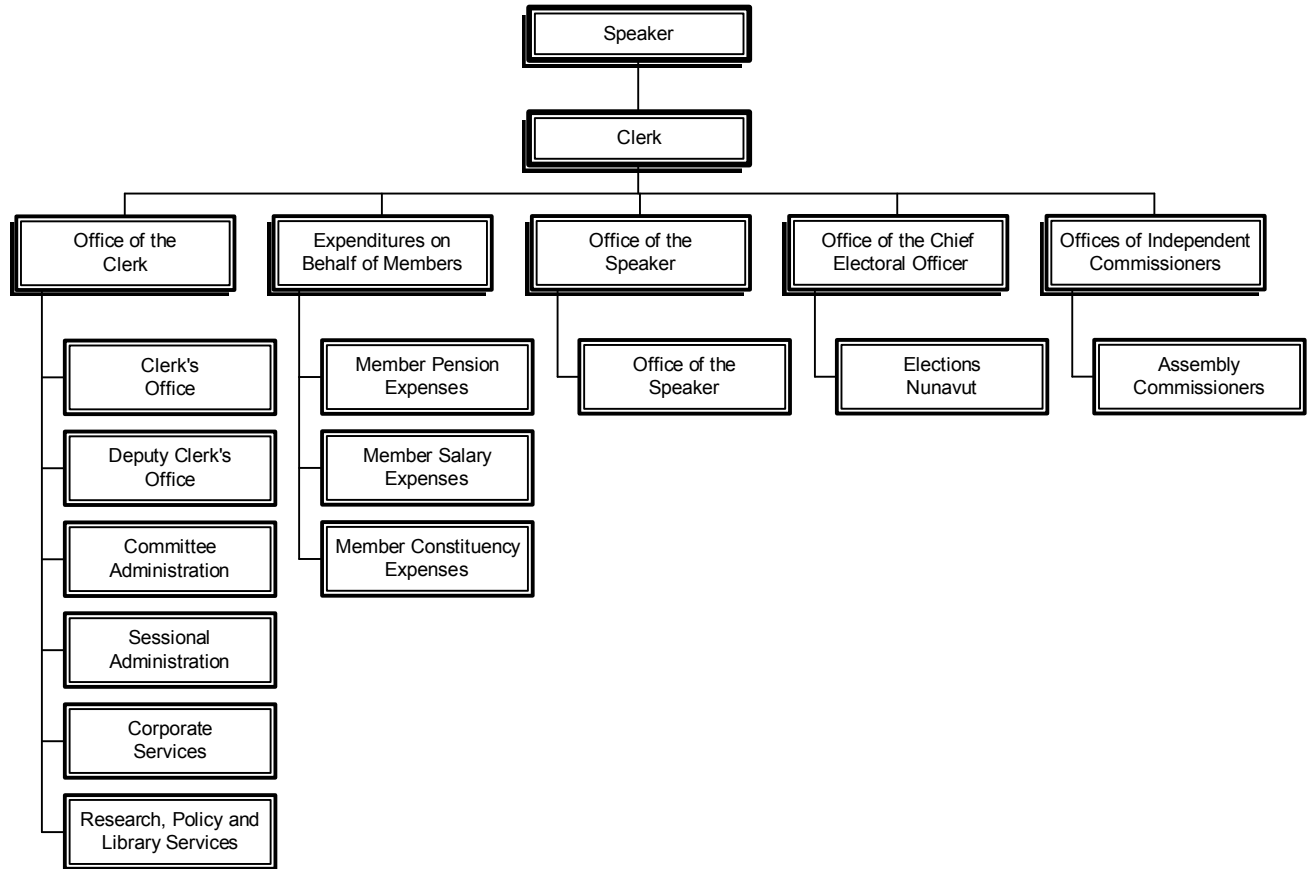
ᑲᑦᑲᑦᑲᑦᑲᑦ ᑲᑦᑲᑦᑲᑦᑲᑦ



**Peter Kilabuk**  
 Speaker of the Legislative Assembly

**John Quirke**  
 Clerk of the Legislative Assembly

ACCOUNTING STRUCTURE CHART







# ᓂᓈᓐ ᓂᓈᓐ ᓂᓈᓐ ᓂᓈᓐ DETAIL OF EXPENDITURES

ᓂᓈᓐ ᓂᓈᓐ ᓂᓈᓐ ᓂᓈᓐ	Capital Expenditures	ᓂᓈᓐ ᓂᓈᓐ ᓂᓈᓐ 2008-2009 Capital Estimates (\$000)	ᓂᓈᓐ ᓂᓈᓐ ᓂᓈᓐ 2007-2008 Revised Estimates (\$000)	ᓂᓈᓐ ᓂᓈᓐ ᓂᓈᓐ 2007-2008 Capital Estimates (\$000)	ᓂᓈᓐ ᓂᓈᓐ ᓂᓈᓐ 2006-2007 Actual Expenditures (\$000)
ᓂᓈᓐ ᓂᓈᓐ ᓂᓈᓐ	Grants and Contributions	-	-	-	-
ᓂᓈᓐ ᓂᓈᓐ ᓂᓈᓐ	Tangible Assets	966	620	620	271
ᓂᓈᓐ ᓂᓈᓐ ᓂᓈᓐ	Computer Hardware and Software	194	20	20	20
<b>ᓂᓈᓐ ᓂᓈᓐ ᓂᓈᓐ ᓂᓈᓐ</b>	<b>Total Capital Expenditures</b>	<b>1,160</b>	<b>640</b>	<b>640</b>	<b>291</b>







ᐱᑦᑕᑕᑦᑭᑦ ᑖᑦᑕᑦᑭᑦ ᑖᑦᑭᑦᑕᑦᑭᑦ ᐱᑦᑕᑕᑦᑭᑦ  
EXPENDITURES ON BEHALF OF MEMBERS

ᐱᑦᑕᑕᑦᑭᑦᑭᑦᑭᑦ ᑖᑦᑭᑦᑕᑦᑭᑦ Project Number	ᐱᑦᑭᑦᑕᑦᑭᑦ ᑖᑦᑭᑦᑕᑦᑭᑦ Detail of Capital	ᐱᑦᑭᑦᑕᑦᑭᑦ ᑖᑦᑭᑦᑕᑦᑭᑦ 2008-2009 Capital Estimates (\$000)	ᐱᑦᑭᑦᑕᑦᑭᑦ ᑖᑦᑭᑦᑕᑦᑭᑦ 2009-2013 Capital Plan (\$000)	ᐱᑦᑭᑦᑕᑦᑭᑦ ᑖᑦᑭᑦᑕᑦᑭᑦ ᐱᑦᑭᑦᑕᑦᑭᑦ ᐱᑦᑭᑦᑕᑦᑭᑦ Cost (\$000)
<b>ᐱᑦᑭᑦᑕᑦᑭᑦ ᐱᑦᑭᑦᑕᑦᑭᑦ    Tangible Assets</b>				
ᐱᑦᑭᑦᑕᑦᑭᑦ ᑖᑦᑭᑦᑕᑦᑭᑦ ᑖᑦᑭᑦᑕᑦᑭᑦ <i>Headquarters Region</i>				
501019	ᑖᑦᑕᑕᑦᑭᑦ ᑖᑦᑭᑦᑕᑦᑭᑦ ᐱᑦᑕᑕᑦᑭᑦ ᑖᑦᑭᑦᑕᑦᑭᑦ ᐱᑦᑕᑕᑦᑭᑦ ᑖᑦᑭᑦᑕᑦᑭᑦ Election Year MLA Furniture and Equipment	111	-	-
ᑖᑦᑭᑦᑕᑦᑭᑦ ᐱᑦᑭᑦᑕᑦᑭᑦ ᑖᑦᑭᑦᑕᑦᑭᑦ ᑖᑦᑭᑦᑕᑦᑭᑦ    Total Headquarters Region		111		
ᑖᑦᑭᑦᑕᑦᑭᑦ ᑖᑦᑭᑦᑕᑦᑭᑦ ᐱᑦᑭᑦᑕᑦᑭᑦ ᑖᑦᑭᑦᑕᑦᑭᑦ    Total Tangible Assets		111		
<b>ᑖᑦᑭᑦᑕᑦᑭᑦ ᑖᑦᑭᑦᑕᑦᑭᑦ ᐱᑦᑭᑦᑕᑦᑭᑦ ᐱᑦᑭᑦᑕᑦᑭᑦ    Computer Hardware and Software</b>				
ᐱᑦᑭᑦᑕᑦᑭᑦ ᑖᑦᑭᑦᑕᑦᑭᑦ ᑖᑦᑭᑦᑕᑦᑭᑦ <i>Headquarters Region</i>				
501019	ᑖᑦᑕᑕᑦᑭᑦ ᑖᑦᑭᑦᑕᑦᑭᑦ ᐱᑦᑕᑕᑦᑭᑦ ᑖᑦᑭᑦᑕᑦᑭᑦ ᐱᑦᑕᑕᑦᑭᑦ ᑖᑦᑭᑦᑕᑦᑭᑦ Election Year MLA Furniture and Equipment	124	-	-
ᑖᑦᑭᑦᑕᑦᑭᑦ ᐱᑦᑭᑦᑕᑦᑭᑦ ᑖᑦᑭᑦᑕᑦᑭᑦ ᑖᑦᑭᑦᑕᑦᑭᑦ    Total Headquarters Region		124		
ᑖᑦᑭᑦᑕᑦᑭᑦ ᑖᑦᑭᑦᑕᑦᑭᑦ ᑖᑦᑭᑦᑕᑦᑭᑦ ᑖᑦᑭᑦᑕᑦᑭᑦ ᑖᑦᑭᑦᑕᑦᑭᑦ    Total Computer Hardware and Software		124		



ᐱᓕᓕᓂᓐ ᓄᓂᓄᓂᓐᓂᓐ ᐱᓕᓕᓂᓐ  
OFFICE OF THE CHIEF ELECTORAL OFFICER

ᐱᓕᓕᓂᓐᓂᓐ ᓄᓂᓄᓂᓐ Project Number	ᐱᓄᓂᓐᓂᓐ ᓄᓂᓄᓂᓐᓂᓐ Detail of Capital	ᐱᓄᓂᓐᓂᓐ ᐱᓄᓂᓐᓂᓐ 2008-2009 Capital Estimates (\$000)	ᐱᓄᓂᓐᓂᓐ ᐱᓄᓂᓐᓂᓐ 2009-2013 Capital Plan (\$000)	ᐱᓄᓂᓐᓂᓐ ᐱᓄᓂᓐᓂᓐ ᐱᓄᓂᓐ Prior Years Cost (\$000)
<b>ᐱᓄᓂᓐᓂᓐ ᐱᓄᓂᓐᓂᓐ Tangible Assets</b>				
<b>ᐱᓕᓕᓂᓐ ᐱᓄᓂᓐᓂᓐ Headquarters Region</b>				
501014	ᓄᓂᓄᓂᓐᓂᓐ ᓄᓂᓄᓂᓐ ᓄᓂᓄᓂᓐᓂᓐ ᓄᓂᓄᓂᓐᓂᓐ Elections Nunavut Equipment Replacement	30	116	-
<b>ᓄᓂᓄᓂᓐ ᐱᓕᓕᓂᓐ ᐱᓄᓂᓐᓂᓐ Total Headquarters Region</b>		<b>30</b>	<b>116</b>	<b>-</b>
<b>ᓄᓂᓄᓂᓐ ᐱᓄᓂᓐᓂᓐ ᐱᓄᓂᓐᓂᓐ Total Tangible Assets</b>		<b>30</b>	<b>116</b>	<b>-</b>







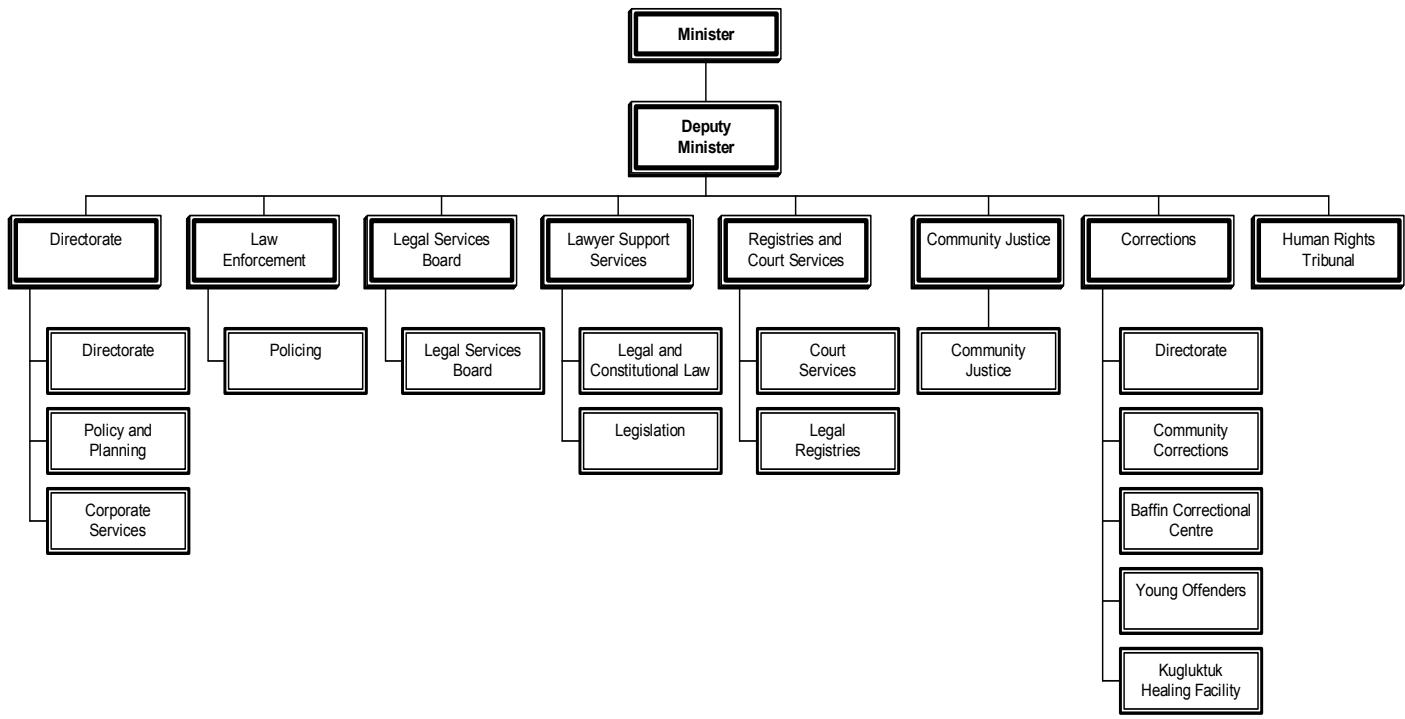


Paul Okalik  
 Minister

Markus Weber  
 Deputy Minister

Vacant  
 Assistant Deputy Minister

ACCOUNTING STRUCTURE CHART





ᐱᓕᓕᓕᓕᓕᓕᓕᓕᓕᓕᓕᓕᓕᓕᓕᓕᓕ  
DETAIL OF EXPENDITURES

ᐱᓕᓕᓕᓕᓕᓕᓕᓕᓕᓕᓕᓕᓕᓕᓕᓕᓕᓕᓕᓕᓕ	Capital Expenditures	ᐱᓕᓕᓕᓕᓕᓕᓕᓕᓕᓕᓕᓕᓕᓕᓕᓕᓕᓕᓕᓕᓕ 2008-2009 Capital Estimates (\$000)	ᐱᓕᓕᓕᓕᓕᓕᓕᓕᓕᓕᓕᓕᓕᓕᓕᓕᓕᓕᓕᓕᓕ 2007-2008 Revised Estimates (\$000)	ᐱᓕᓕᓕᓕᓕᓕᓕᓕᓕᓕᓕᓕᓕᓕᓕᓕᓕᓕᓕᓕᓕ 2007-2008 Capital Estimates (\$000)	ᓱᓕᓕᓕᓕᓕᓕᓕᓕᓕᓕᓕᓕᓕᓕᓕᓕᓕᓕᓕᓕᓕ 2006-2007 Actual Expenditures (\$000)
ᓕᓕᓕᓕᓕᓕᓕᓕᓕᓕᓕᓕᓕᓕᓕᓕᓕᓕᓕᓕᓕᓕᓕ	Grants and Contributions	-	-	-	-
ᐱᓕᓕᓕᓕᓕᓕᓕᓕᓕᓕᓕᓕᓕᓕᓕᓕᓕᓕᓕᓕᓕᓕ	Tangible Assets	2,900	4,244	1,900	1,198
ᓕᓕᓕᓕᓕᓕᓕᓕᓕᓕᓕᓕᓕᓕᓕᓕᓕᓕᓕᓕᓕᓕᓕ ᓕᓕᓕᓕᓕᓕᓕᓕᓕᓕᓕᓕᓕᓕᓕᓕᓕᓕᓕᓕᓕᓕᓕᓕ	Computer Hardware and Software	-	-	-	-
<b>ᓕᓕᓕᓕᓕᓕᓕᓕᓕᓕᓕᓕᓕᓕᓕᓕᓕᓕᓕᓕᓕᓕᓕ Total Capital Expenditures</b>		<b>2,900</b>	<b>4,244</b>	<b>1,900</b>	<b>1,198</b>



ᐱᓕᓕᓕᓕᓕᓕᓕᓕᓕᓕ  
DIRECTORATE

ᐱᓕᓕᓕᓕᓕᓕᓕᓕᓕᓕᓕ Project Number	ᐱᓕᓕᓕᓕᓕᓕᓕᓕᓕᓕᓕ Detail of Capital	ᐱᓕᓕᓕᓕᓕᓕᓕᓕᓕᓕᓕ 2008-2009 Capital Estimates (\$000)	ᐱᓕᓕᓕᓕᓕᓕᓕᓕᓕᓕᓕ 2009-2013 Capital Plan (\$000)	ᐱᓕᓕᓕᓕᓕᓕᓕᓕᓕᓕᓕ Prior Years Cost (\$000)
<b>ᐱᓕᓕᓕᓕᓕᓕᓕᓕᓕᓕᓕ Tangible Assets</b>				
<b>ᐱᓕᓕᓕᓕᓕᓕᓕᓕᓕᓕᓕ Headquarters Region</b>				
<b>ᓄᓕᓕᓕᓕᓕᓕᓕᓕᓕᓕᓕ Nunavut - Various</b>				
	ᓕᓕᓕᓕᓕᓕᓕᓕᓕᓕᓕᓕᓕ Small Capital (\$300,000 or less)	400	1,600	
<b>ᓕᓕᓕᓕᓕᓕᓕᓕᓕᓕᓕᓕᓕ Total Headquarters Region</b>		<b>400</b>		
<b>ᓕᓕᓕᓕᓕᓕᓕᓕᓕᓕᓕᓕᓕ Total Tangible Assets</b>		<b>400</b>		













ᐃᑦᑲᑦᑲᑦᑲᑦᑲᑦᑲᑦ



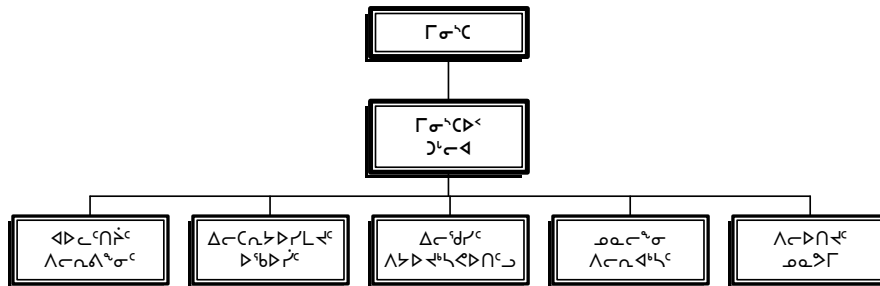
CULTURE, LANGUAGE,  
ELDERS AND YOUTH

ᑲᐃ ᑲᑦᑲᑦᑲᑦ  
 ᑲᑦᑲᑦᑲᑦ

ᐃᐃ ᑲᑲᑲᑲᑲᑲ  
 ᑲᑲᑲᑲᑲᑲ ᑲᑲᑲᑲᑲᑲ

ᑲᑲᑲᑲᑲᑲ ᑲᑲᑲᑲᑲᑲ  
 ᑲᑲᑲᑲᑲᑲ ᑲᑲᑲᑲᑲᑲ

ᑲᑲᑲᑲᑲᑲᑲᑲᑲᑲ ᐃᑦᑲᑦᑲᑦᑲᑦᑲᑦ

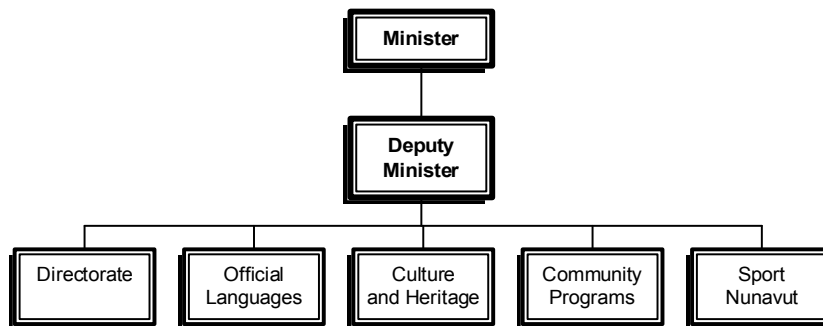


Louis Tapardjuk  
Minister

Phoebe Hainnu  
Deputy Minister

Naullaq Arnaquq  
Assistant Deputy Minister

ACCOUNTING STRUCTURE CHART







ᐃᑦᑲᑦᑲᑦᑲᑦᑲᑦᑲᑦ ᐃᑦᑲᑦᑲᑦᑲᑦᑲᑦ  
DETAIL OF EXPENDITURES

ᐃᑦᑲᑦᑲᑦᑲᑦᑲᑦᑲᑦ ᐃᑦᑲᑦᑲᑦᑲᑦᑲᑦ	Capital Expenditures	ᐃᑦᑲᑦᑲᑦᑲᑦᑲᑦᑲᑦ ᐃᑦᑲᑦᑲᑦᑲᑦᑲᑦᑲᑦ 2008-2009 Capital Estimates (\$000)	ᐃᑦᑲᑦᑲᑦᑲᑦᑲᑦᑲᑦ ᐃᑦᑲᑦᑲᑦᑲᑦᑲᑦᑲᑦ 2007-2008 Revised Estimates (\$000)	ᐃᑦᑲᑦᑲᑦᑲᑦᑲᑦᑲᑦ ᐃᑦᑲᑦᑲᑦᑲᑦᑲᑦᑲᑦ 2007-2008 Capital Estimates (\$000)	ᑲᑦᑲᑦᑲᑦᑲᑦᑲᑦᑲᑦ ᐃᑦᑲᑦᑲᑦᑲᑦᑲᑦᑲᑦᑲᑦ 2006-2007 Actual Expenditures (\$000)
ᑲᑦᑲᑦᑲᑦᑲᑦᑲᑦᑲᑦᑲᑦ	Grants and Contributions	-	2,718	1,655	1,080
ᐃᑦᑲᑦᑲᑦᑲᑦᑲᑦᑲᑦᑲᑦ	Tangible Assets	910	8,959	6,640	47
ᑲᑦᑲᑦᑲᑦᑲᑦᑲᑦᑲᑦᑲᑦ ᑲᑦᑲᑦᑲᑦᑲᑦᑲᑦᑲᑦᑲᑦᑲᑦ	Computer Hardware and Software	-	-	-	-
<b>ᑲᑦᑲᑦᑲᑦᑲᑦᑲᑦᑲᑦᑲᑦ ᐃᑦᑲᑦᑲᑦᑲᑦᑲᑦᑲᑦ</b>	<b>Total Capital Expenditures</b>	<b>910</b>	<b>11,677</b>	<b>8,295</b>	<b>1,127</b>



ᐱᑦᑲᑦᑲᑦᑲᑦᑲᑦᑲᑦ  
DIRECTORATE

ᐱᑦᑲᑦᑲᑦᑲᑦᑲᑦᑲᑦ Project Number	ᐱᑦᑲᑦᑲᑦᑲᑦᑲᑦᑲᑦ Detail of Capital	ᐱᑦᑲᑦᑲᑦᑲᑦᑲᑦᑲᑦ 2008-2009 Capital Estimates (\$000)	ᐱᑦᑲᑦᑲᑦᑲᑦᑲᑦᑲᑦ 2009-2013 Capital Plan (\$000)	ᐱᑦᑲᑦᑲᑦᑲᑦᑲᑦᑲᑦ ᐱᑦᑲᑦᑲᑦᑲᑦᑲᑦ Prior Years Cost (\$000)
<b>ᐱᑦᑲᑦᑲᑦᑲᑦᑲᑦᑲᑦᑲᑦ Tangible Assets</b>				
<b>ᐱᑦᑲᑦᑲᑦᑲᑦᑲᑦᑲᑦᑲᑦᑲᑦ Headquarters Region</b>				
<b>ᐱᑦᑲᑦᑲᑦᑲᑦᑲᑦᑲᑦᑲᑦᑲᑦ Nunavut - Various</b>				
508019	ᐱᑦᑲᑦᑲᑦᑲᑦᑲᑦᑲᑦᑲᑦ Nunavut Heritage Centre	-	-	1,000
509077	ᐱᑦᑲᑦᑲᑦᑲᑦᑲᑦᑲᑦᑲᑦ Folk School	850	10,283	390
508018	ᐱᑦᑲᑦᑲᑦᑲᑦᑲᑦᑲᑦᑲᑦᑲᑦ Small Capital (\$300,000 or less)	60	240	
<b>ᐱᑦᑲᑦᑲᑦᑲᑦᑲᑦᑲᑦᑲᑦᑲᑦᑲᑦ Total Headquarters Region</b>		<b>910</b>		
<b>ᐱᑦᑲᑦᑲᑦᑲᑦᑲᑦᑲᑦᑲᑦᑲᑦᑲᑦ Total Tangible Assets</b>		<b>910</b>		



ᐃᓕᓐᓂᐱᓯᓂᓕᓕᓕᓕᓂᓐᓂᓐ



EDUCATION



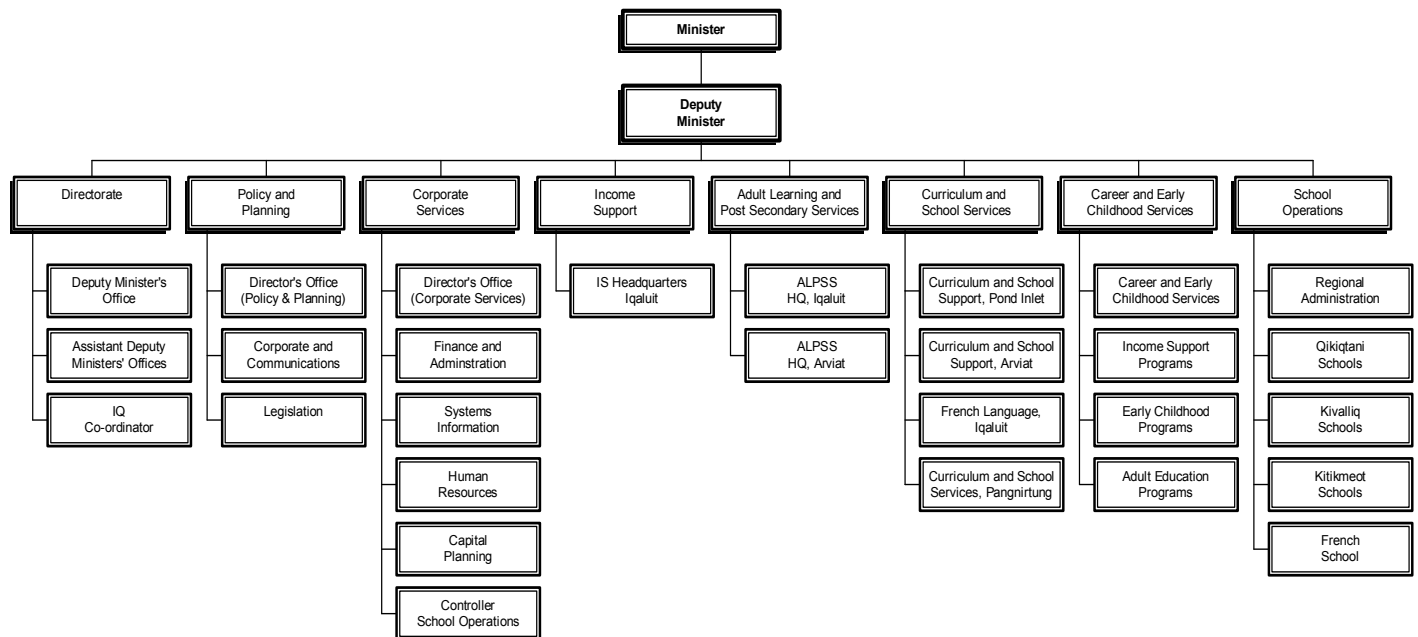
**Edward Picco**  
 Minister

**Peter Geikie**  
 Assistant Deputy Minister

**Kathy Okpik**  
 Deputy Minister

**Irene Tanuyak**  
 Assistant Deputy Minister

**ACCOUNTING STRUCTURE CHART**







ᐃᐸᑦᐸᑦᐸᑦᐸᑦᐸᑦ ᐃᑦᐸᑦᐸᑦᐸᑦ  
DETAIL OF EXPENDITURES

ᐃᑦᐸᑦᐸᑦᐸᑦᐸᑦᐸᑦ	Capital Expenditures	ᐃᑦᐸᑦᐸᑦᐸᑦᐸᑦᐸᑦ 2008-2009 Capital Estimates (\$000)	ᐃᑦᐸᑦᐸᑦᐸᑦᐸᑦᐸᑦ 2007-2008 Revised Estimates (\$000)	ᐃᑦᐸᑦᐸᑦᐸᑦᐸᑦᐸᑦ 2007-2008 Capital Estimates (\$000)	ᐃᑦᐸᑦᐸᑦᐸᑦᐸᑦᐸᑦ 2006-2007 Actual Expenditures (\$000)
ᐃᑦᐸᑦᐸᑦᐸᑦᐸᑦᐸᑦ	Grants and Contributions	-	-	-	-
ᐃᑦᐸᑦᐸᑦᐸᑦᐸᑦᐸᑦ	Tangible Assets	25,585	44,024	23,395	13,666
ᐃᑦᐸᑦᐸᑦᐸᑦᐸᑦᐸᑦᐸᑦ	Computer Hardware and Software	-	-	-	-
<b>ᐃᑦᐸᑦᐸᑦᐸᑦᐸᑦᐸᑦᐸᑦ</b>	<b>Total Capital Expenditures</b>	<b>25,585</b>	<b>44,024</b>	<b>23,395</b>	<b>13,666</b>





**ΝΓΔρε ΛΑεεεεεεε  
 CORPORATE SERVICES**

Λεεεεεεεε εεεεεεε Project Number	Δερενεδε δεδεδεδερε Detail of Capital	Δερενεδε δεδεδεδερε 2008-2009 Capital Estimates (\$000)	Δερενεδε δεδεδεδερε 2009-2013 Capital Plan (\$000)	Δερενεδε δεδεδεδερε Δερενεδε δεδεδεδερε Prior Years Cost (\$000)
<b>Δερενεδε Sannikiluaq</b>				
509015	δερενεδε δεδεδεδερε New School	200	14,050	2,820
<b>εεεεεεε εεεεεεε Total Qikiqtaaluk Region</b>		<b>16,200</b>		
<b>εεεεεεε Kivalliq Region</b>				
<b>εεεεεεε Coral Harbour</b>				
509075	εεεε δεδεδεδερε δεδεδεδερεεεεεεεε Sakku School Renovations	50	-	5,650
509074	δερενεδε δεδεδεδερε New School	-	19,050	50
<b>εεεεεεε Rankin Inlet</b>				
509009	Δερενεδεδεεεε εεεεεεε Student Accommodation	3,900	550	5,460
509076	δερενεδε εεεεεεεεε δεδεδεδερε Nunavut Trade School	3,250	3,150	2,670
<b>εεεεεεε εεεεεεε Total Kivalliq Region</b>		<b>7,200</b>		
<b>εεεεεεε Kitikmeot Region</b>				
<b>εεεεεεε Gjoa Haven</b>				
509057	δερενεδε δεδεδεδερε δεδεδεδερεεεεεεεε Elementary School Renovation with Gym	1,500	18,200	33,477
<b>εεεεεεε εεεεεεε Total Kitikmeot Region</b>		<b>1,500</b>		
<b>εεεεεεε εεεεεεε εεεεεεε Total Tangible Assets</b>		<b>25,585</b>		





ᐃᓄᓐᓂᐃᓐᓂᓐᓂᓐᓂᓐᓂᓐᓂᓐ  
ᐃᓄᓐᓂᓐᓂᓐᓂᓐᓂᓐᓂᓐ



HEALTH AND  
SOCIAL SERVICES





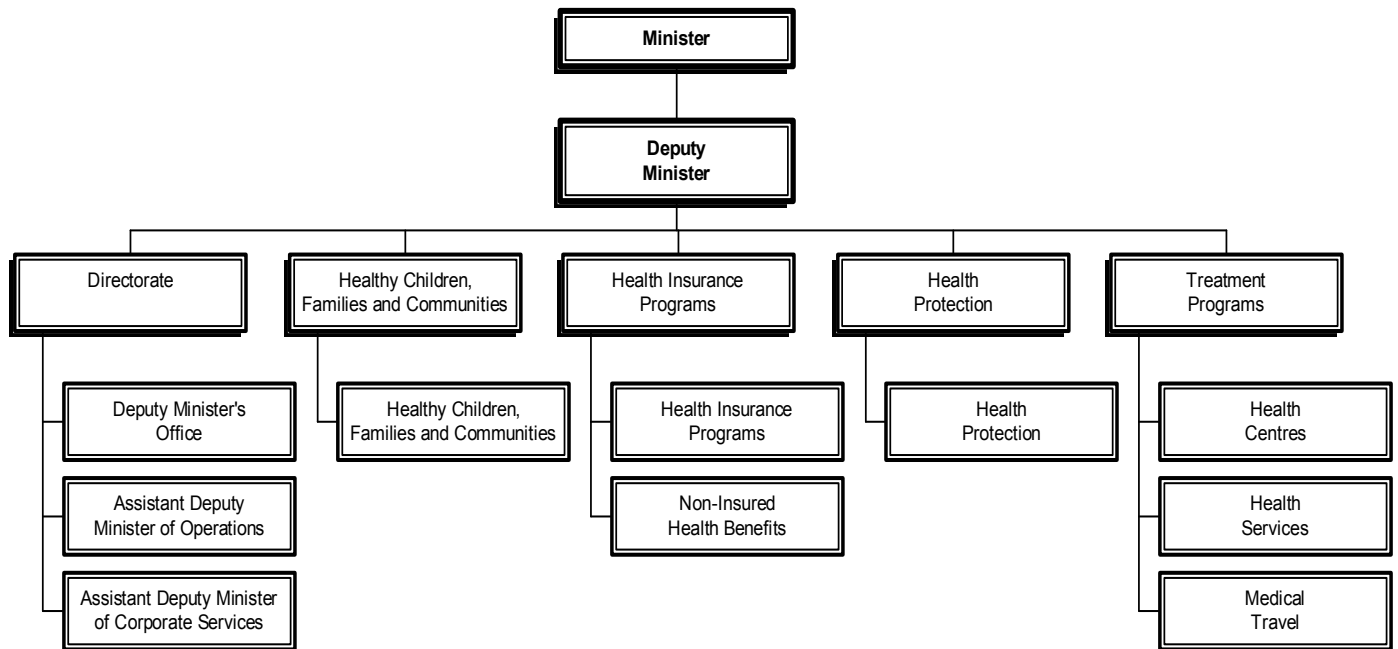
**Leona Aglukkaq**  
 Minister

**David Richardson**  
 Assistant Deputy Minister  
 Operations

**Alex Campbell**  
 Deputy Minister

**Raj Downe**  
 Assistant Deputy Minister  
 Corporate Services

ACCOUNTING STRUCTURE CHART





ᐱᓐᓂᓐ ᓂᓐᓂᓐ ᓂᓐᓂᓐ  
 DETAIL OF EXPENDITURES

ᐱᓐᓂᓐ ᓂᓐᓂᓐ	Capital Expenditures	ᐱᓐᓂᓐ ᓂᓐᓂᓐ 2008-2009 Capital Estimates (\$000)	ᐱᓐᓂᓐ ᓂᓐᓂᓐ 2007-2008 Revised Estimates (\$000)	ᐱᓐᓂᓐ ᓂᓐᓂᓐ 2007-2008 Capital Estimates (\$000)	ᓂᓐᓂᓐ ᓂᓐᓂᓐ 2006-2007 Actual Expenditures (\$000)
ᓂᓐᓂᓐ ᓂᓐᓂᓐ	Grants and Contributions	-	-	-	-
ᐱᓐᓂᓐ ᓂᓐᓂᓐ	Tangible Assets	14,373	48,791	9,419	40,728
ᓂᓐᓂᓐ ᓂᓐᓂᓐ ᓂᓐᓂᓐ ᓂᓐᓂᓐ	Computer Hardware and Software	-	-	-	194
<b>ᓂᓐᓂᓐ ᓂᓐᓂᓐ ᓂᓐᓂᓐ</b>	<b>Total Capital Expenditures</b>	<b>14,373</b>	<b>48,791</b>	<b>9,419</b>	<b>40,922</b>



ᐊᑭᓂᐊᓐ ᐊᓕᓂᓐᓂᐊᓐ  
DIRECTORATE

ᐊᓂᐊᓐ ᓂᐊᓂᐊᓐ Project Number	ᐊᑭᓂᐊᓐ ᓇᓂᓂᐃᔭᐃᑦᓂᐊᓐ Detail of Capital	ᐊᑭᓂᐊᓐ ᐊᑭᓂᐊᓐ 2008-2009 Capital Estimates (\$000)	ᐊᑭᓂᐊᓐ ᐊᓕᓂᐊᓐ 2009-2013 Capital Plan (\$000)	ᐊᓂᐊᓐ ᐊᑭᓂᐊᓐ ᐊᓂᐊᓐ ᐊᑭᓂᐊᓐ Prior Years Cost (\$000)
<b>ᐊᑭᓂᐊᓐ ᐊᓂᐊᓐ Tangible Assets</b>				
<b>ᐊᓂᐊᓐ ᓇᓂᓂᐃᔭᐃᑦᓂᐊᓐ Headquarters Region</b>				
<b>ᓇᓂᓂᐊᓐ ᓇᓂᐊᓐ Nunavut - Various</b>				
510043	ᓂᓂᐊᓐ ᓇᓂᐊᓐ ᐊᓂᐊᓐ Minor Projects	500	2,000	1,025
510044	ᑭᓂᐊᓐ ᐊᑭᓂᐊᓐ (\$300,000 ᐊᓂᓂᐊᓐ ᓂᐊᓐ) Small Capital (\$300,000 or less)	500	2,000	
<b>ᓂᓂᐊᓐ ᐊᓂᐊᓐ ᓇᓂᐊᓐ Total Headquarters Region</b>		<b>1,000</b>		
<b>ᐊᑭᓂᐊᓐ ᐊᓂᐊᓐ Qikiqtaaluk Region</b>				
<b>ᐊᓂᐊᓐ Igloodik</b>				
510030	ᓂᓂᐊᓐ ᐊᓂᐊᓐ ᓇᓂᓂᐊᓐ ᓂᐊᓐ Continuing Care Centre	4,135	-	6,000
<b>ᐊᓂᐊᓐ Iqaluit</b>				
510020	ᐊᑭᓂᐊᓐ ᐊᓂᐊᓐ ᓇᓂᓂᐊᓐ Qikiqtani General Hospital	4,511	450	61,299
<b>ᓂᓂᐊᓐ ᐊᑭᓂᐊᓐ ᐊᓂᐊᓐ Total Qikiqtaaluk Region</b>		<b>8,646</b>		
<b>ᐊᑭᓂᐊᓐ ᐊᓂᐊᓐ Kitikmeot Region</b>				
<b>ᐊᓂᐊᓐ Gjoa Haven</b>				
510031	ᓂᓂᐊᓐ ᐊᓂᐊᓐ ᓇᓂᓂᐊᓐ ᓂᐊᓐ Continuing Care Centre	4,527	50	6,042
<b>ᐊᓂᐊᓐ Taloyoak</b>				
500239	ᐊᓂᐊᓐ ᐊᓂᐊᓐ ᓇᓂᓂᐊᓐ Replace Health Centre	200	12,550	835
<b>ᓂᓂᐊᓐ ᐊᑭᓂᐊᓐ ᐊᓂᐊᓐ Total Kitikmeot Region</b>		<b>4,727</b>		
<b>ᓂᓂᐊᓐ ᐊᑭᓂᐊᓐ ᐊᓂᐊᓐ ᐊᓂᐊᓐ Total Tangible Assets</b>		<b>14,373</b>		



ᐃᑦᑎᑦᑎᑦᑎᑦᑎᑦᑎᑦ



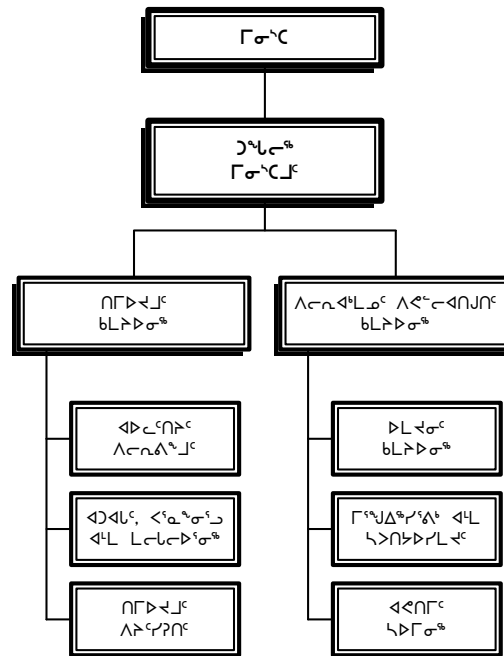
ENVIRONMENT

ᐱᑦᑎᑦᑕᑦᑎᐱᑦᑕᑦ  
 ᐱᑦᑎᑦᑕᑦ

ᐱᑦᑎᑦᑕᑦᑎᐱᑦᑕᑦ  
 ᐱᑦᑎᑦᑕᑦᑎᐱᑦᑕᑦ

ᐱᑦᑎᑦᑕᑦᑎᐱᑦᑕᑦ  
 ᐱᑦᑎᑦᑕᑦᑎᐱᑦᑕᑦ

ᐱᑦᑎᑦᑕᑦᑎᐱᑦᑕᑦ ᐱᑦᑎᑦᑕᑦᑎᐱᑦᑕᑦ







## ᐱᑦᑎᐱᐅᑦ ᑦᑲᑭᐱᑦ

ᑕᐱᑦᑎᐱᐅᑦ ᑦᑲᑭᐱᑦ ᐃᑲᑎᑦᑎᐱᐅᑦ ᐱᑦᑎᐱᐅᑦ ᑦᑲᑭᐱᑦ ᐃᑲᑎᑦᑎᐱᐅᑦ ᐃᑲᑎᑦᑎᐱᐅᑦ (ᐃᑲᑎᐱᐅᑦ, ᑭᑎᐱᐅᑦ, ᐃᐱᑦᑎᐱᐅᑦ), ᑭᑎᐱᐅᑦ ᑦᑲᑭᐱᑦ ᐃᑲᑎᑦᑎᐱᐅᑦ ᑦᑲᑭᐱᑦ ᐃᑲᑎᑦᑎᐱᐅᑦ ᐃᑲᑎᑦᑎᐱᐅᑦ ᐃᑲᑎᑦᑎᐱᐅᑦ ᐃᑲᑎᑦᑎᐱᐅᑦ ᐃᑲᑎᑦᑎᐱᐅᑦ ᐃᑲᑎᑦᑎᐱᐅᑦ ᐃᑲᑎᑦᑎᐱᐅᑦ.

## MISSION

Through *avatimik kamattiarniq* (environmental stewardship) Department of Environment, in partnership with others, protects the environment (land, air, water), parks and wildlife by promoting the sustainable use of these renewable resources.





ᐱᓂᐸᓂᐸᓂᐸᓂᐸᓂᐸ  
PROGRAM DEVELOPMENT

ᐱᓂᐸᓂᐸᓂᐸᓂᐸᓂᐸ Project Number	ᐱᓂᐸᓂᐸᓂᐸᓂᐸᓂᐸ Detail of Capital	ᐱᓂᐸᓂᐸᓂᐸᓂᐸ 2008-2009 Capital Estimates (\$000)	ᐱᓂᐸᓂᐸᓂᐸᓂᐸ 2009-2013 Capital Plan (\$000)	ᐱᓂᐸᓂᐸᓂᐸᓂᐸ ᐱᓂᐸᓂᐸ ᐱᓂᐸᓂᐸ Cost (\$000)
<b>ᐱᓂᐸᓂᐸᓂᐸᓂᐸᓂᐸ Tangible Assets</b>				
<b>ᐱᓂᐸᓂᐸᓂᐸᓂᐸᓂᐸᓂᐸ Headquarters Region</b>				
<b>ᐱᓂᐸᓂᐸᓂᐸᓂᐸᓂᐸᓂᐸ Nunavut - Various</b>				
511009	ᐱᓂᐸᓂᐸᓂᐸᓂᐸᓂᐸᓂᐸ Wildlife Office Renovations	100	400	253
511007	ᐱᓂᐸᓂᐸᓂᐸᓂᐸᓂᐸᓂᐸᓂᐸ Kugaaruk Parks Development	600	-	-
	ᐱᓂᐸᓂᐸᓂᐸᓂᐸᓂᐸᓂᐸᓂᐸ Small Capital (\$300,000 or less)	1,000	4,000	
<b>ᐱᓂᐸᓂᐸᓂᐸᓂᐸᓂᐸᓂᐸᓂᐸ Total Headquarters Region</b>		<b>1,700</b>		
<b>ᐱᓂᐸᓂᐸᓂᐸᓂᐸᓂᐸᓂᐸᓂᐸ Total Tangible Assets</b>		<b>1,700</b>		



ᓄᓇᓕᓄᓐ ᓂᓴᓂᓄᓐ  
ᓂᓴᓂᓄᓐ



COMMUNITY AND  
GOVERNMENT SERVICES

ሥልጣን ሥልጣን  
 ሥልጣን

ሥልጣን ሥልጣን

ሥልጣን ሥልጣን ሥልጣን ሥልጣን

ሥልጣን ሥልጣን ሥልጣን ሥልጣን ሥልጣን

ሥልጣን ሥልጣን ሥልጣን ሥልጣን

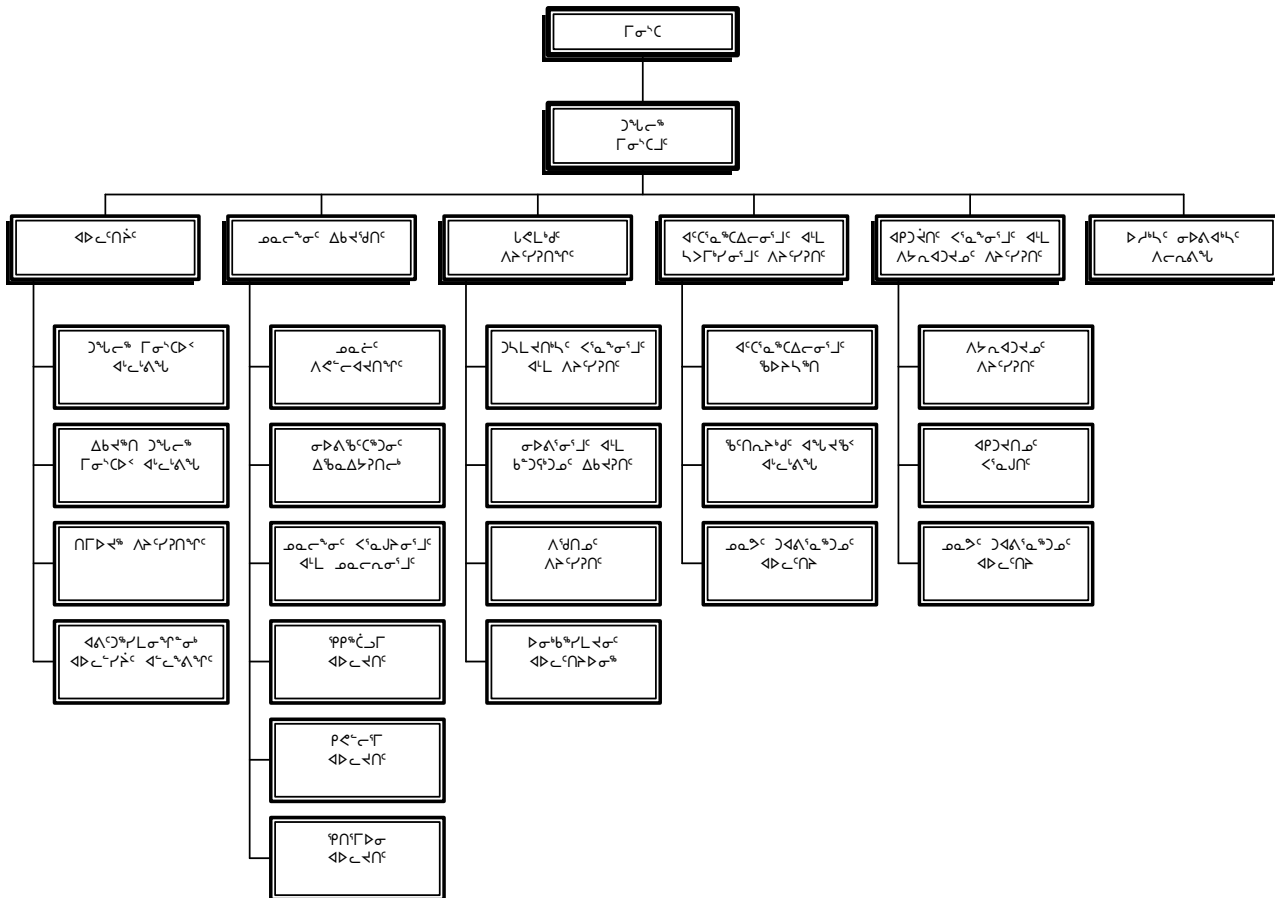
ሥልጣን ሥልጣን ሥልጣን ሥልጣን

ሥልጣን ሥልጣን ሥልጣን ሥልጣን

ሥልጣን ሥልጣን ሥልጣን ሥልጣን ሥልጣን

ሥልጣን ሥልጣን ሥልጣን ሥልጣን ሥልጣን

የግብይት ሥልጣን ሥልጣን ሥልጣን ሥልጣን









ᓄᓇᓂᓄ ᓄᓇᓂᓄ ᓄᓇᓂᓄ  
 DETAIL OF EXPENDITURES

ᓄᓇᓂᓄ ᓄᓇᓂᓄ	Capital Expenditures	ᓄᓇᓂᓄ ᓄᓇᓂᓄ 2008-2009 Capital Estimates (\$000)	ᓄᓇᓂᓄ ᓄᓇᓂᓄ 2007-2008 Revised Estimates (\$000)	ᓄᓇᓂᓄ ᓄᓇᓂᓄ 2007-2008 Capital Estimates (\$000)	ᓄᓇᓂᓄ ᓄᓇᓂᓄ 2006-2007 Actual Expenditures (\$000)
ᓄᓇᓂᓄ ᓄᓇᓂᓄ	Grants and Contributions	2,400	6,088	4,000	3,310
ᓄᓇᓂᓄ ᓄᓇᓂᓄ	Tangible Assets	20,707	28,695	12,576	14,935
ᓄᓇᓂᓄ ᓄᓇᓂᓄ	Computer Hardware and Software	-	-	-	-
<b>ᓄᓇᓂᓄ ᓄᓇᓂᓄ ᓄᓇᓂᓄ</b>	<b>Total Capital Expenditures</b>	<b>23,107</b>	<b>34,783</b>	<b>16,576</b>	<b>18,245</b>



ᐋᓂᓇᓃᓄ ᐋᓂᓇᓃᓄ ᐋᓂᓇᓃᓄ ᐋᓂᓇᓃᓄ  
CAPITAL PLANNING AND TECHNICAL SERVICES

ᐋᓂᓇᓃᓄ ᓇᓇᓄᓇᓃᓄ ᐋᓂᓇᓃᓄ Project Number	ᐋᓂᓇᓃᓄ ᓇᓇᓄᓇᓃᓄ ᐋᓂᓇᓃᓄ Detail of Capital	ᐋᓂᓇᓃᓄ ᐋᓂᓇᓃᓄ 2008-2009 Capital Estimates (\$000)	ᐋᓂᓇᓃᓄ ᐋᓂᓇᓃᓄ 2009-2013 Capital Plan (\$000)	ᐋᓂᓇᓃᓄ ᐋᓂᓇᓃᓄ ᐋᓂᓇᓃᓄ ᐋᓂᓇᓃᓄ Cost (\$000)
<b>ᐋᓂᓇᓃᓄ ᐋᓂᓇᓃᓄ ᐋᓂᓇᓃᓄ Grants and Contributions</b>				
<i>ᐋᓂᓇᓃᓄ ᐋᓂᓇᓃᓄ Qikiqtaaluk Region</i>				
<i>ᐋᓂᓇᓃᓄ ᐋᓂᓇᓃᓄ Iqaluit</i>				
507031	ᓆᓂᓇᓃᓄ - ᐋᓂᓇᓃᓄ ᐋᓂᓇᓃᓄ ᐋᓂᓇᓃᓄ ᐋᓂᓇᓃᓄ GN-Iqaluit Contribution Agreement	2,400	9,600	31,171
<b>ᐋᓂᓇᓃᓄ ᐋᓂᓇᓃᓄ ᐋᓂᓇᓃᓄ Total Qikiqtaaluk Region</b>		<b>2,400</b>		
<b>ᐋᓂᓇᓃᓄ ᐋᓂᓇᓃᓄ ᐋᓂᓇᓃᓄ Total Grants and Contributions</b>		<b>2,400</b>		
<b>ᐋᓂᓇᓃᓄ ᐋᓂᓇᓃᓄ Tangible Assets</b>				
<i>ᐋᓂᓇᓃᓄ ᐋᓂᓇᓃᓄ Headquarters Region</i>				
<i>ᓄᓇᓇᓇᓄ ᓄᓇᓇᓇᓄ Nunavut - Various</i>				
514130	ᓄᓇᓇᓇᓄ ᐋᓂᓇᓃᓄ (\$300,000 ᐋᓂᓇᓃᓄ ᐋᓂᓇᓃᓄ) Small Capital (\$300,000 or less)	3,895	15,580	
<b>ᐋᓂᓇᓃᓄ ᐋᓂᓇᓃᓄ ᐋᓂᓇᓃᓄ Total Headquarters Region</b>		<b>3,895</b>		
<i>ᐋᓂᓇᓃᓄ ᐋᓂᓇᓃᓄ Qikiqtaaluk Region</i>				
<i>ᐋᓂᓇᓃᓄ ᐋᓂᓇᓃᓄ Arctic Bay</i>				
717066	ᓄᓇᓇᓇᓄ ᐋᓂᓇᓃᓄ ᐋᓂᓇᓃᓄ Community Hall	2,350	-	200
<i>ᐋᓂᓇᓃᓄ ᐋᓂᓇᓃᓄ Grise Fiord</i>				
	ᐋᓂᓇᓃᓄ ᐋᓂᓇᓃᓄ ᐋᓂᓇᓃᓄ ᐋᓂᓇᓃᓄ Qaggivik Community Centre Expansion	100	650	-
<i>ᐋᓂᓇᓃᓄ ᐋᓂᓇᓃᓄ Hall Beach</i>				
	ᓄᓇᓇᓇᓄ ᐋᓂᓇᓃᓄ ᐋᓂᓇᓃᓄ ᐋᓂᓇᓃᓄ Community Hall Expansion	100	900	-

ᓄᓇᓂᓄ ᓄᓇᓂᓄ ᓄᓇᓂᓄ ᓄᓇᓂᓄ ᓄᓇᓂᓄ  
CAPITAL PLANNING AND TECHNICAL SERVICES

ᓄᓇᓂᓄ ᓄᓇᓂᓄ Project Number	ᓄᓇᓂᓄ ᓄᓇᓂᓄ Detail of Capital	ᓄᓇᓂᓄ ᓄᓇᓂᓄ 2008-2009 Capital Estimates (\$000)	ᓄᓇᓂᓄ ᓄᓇᓂᓄ 2009-2013 Capital Plan (\$000)	ᓄᓇᓂᓄ ᓄᓇᓂᓄ Prior Years Cost (\$000)
<b>ᓄᓇᓂᓄ Igloolik</b>				
	ᓄᓇᓂᓄ ᓄᓇᓂᓄ ᓄᓇᓂᓄ ᓄᓇᓂᓄ Replacement of Community Hall	150	2,400	-
<b>ᓄᓇᓂᓄ Pangnirtung</b>				
514126	ᓄᓇᓂᓄ ᓄᓇᓂᓄ ᓄᓇᓂᓄ Duval River Bridge	350	-	1,000
<b>ᓄᓇᓂᓄ Resolute Bay</b>				
507075	ᓄᓇᓂᓄ ᓄᓇᓂᓄ ᓄᓇᓂᓄ Sewage and Water Works	102	-	1,974
	ᓄᓇᓂᓄ ᓄᓇᓂᓄ Arena	500	2,000	-
<b>ᓄᓇᓂᓄ ᓄᓇᓂᓄ Total Qikiqtaaluk Region</b>		<b>3,652</b>		
<b>ᓄᓇᓂᓄ Kivalliq Region</b>				
<b>ᓄᓇᓂᓄ Rankin Inlet</b>				
514057	ᓄᓇᓂᓄ ᓄᓇᓂᓄ ᓄᓇᓂᓄ Sewage Treatment Plant	1,050	4,600	4,350
	ᓄᓇᓂᓄ ᓄᓇᓂᓄ ᓄᓇᓂᓄ Retrofit at Arena	100	400	-
<b>ᓄᓇᓂᓄ Repulse Bay</b>				
514134	ᓄᓇᓂᓄ ᓄᓇᓂᓄ ᓄᓇᓂᓄ 4 Bay Parking Garage	900	600	150
	ᓄᓇᓂᓄ ᓄᓇᓂᓄ ᓄᓇᓂᓄ Community Hall	450	2,050	-
<b>ᓄᓇᓂᓄ Whale Cove</b>				
717070	ᓄᓇᓂᓄ ᓄᓇᓂᓄ ᓄᓇᓂᓄ Community Hall	1,900	-	150
<b>ᓄᓇᓂᓄ ᓄᓇᓂᓄ Total Kivalliq Region</b>		<b>4,400</b>		

ᐱᓱᓕᓕᓂᓱᓂᓄᓂᓪᓗ ᐱᓱᓕᓕᓂᓱᓂᓄᓂᓪᓗ ᐱᓱᓕᓕᓂᓱᓂᓄᓂᓪᓗ  
CAPITAL PLANNING AND TECHNICAL SERVICES

ᓱᓱᓕᓕᓂᓱᓂᓄᓂᓪᓗ ᐱᓱᓕᓕᓂᓱᓂᓄᓂᓪᓗ Project Number	ᐱᓱᓕᓕᓂᓱᓂᓄᓂᓪᓗ ᐱᓱᓕᓕᓂᓱᓂᓄᓂᓪᓗ Detail of Capital	ᐱᓱᓕᓕᓂᓱᓂᓄᓂᓪᓗ ᐱᓱᓕᓕᓂᓱᓂᓄᓂᓪᓗ 2008-2009 Capital Estimates (\$000)	ᐱᓱᓕᓕᓂᓱᓂᓄᓂᓪᓗ ᐱᓱᓕᓕᓂᓱᓂᓄᓂᓪᓗ 2009-2013 Capital Plan (\$000)	ᐱᓱᓕᓕᓂᓱᓂᓄᓂᓪᓗ ᐱᓱᓕᓕᓂᓱᓂᓄᓂᓪᓗ ᐱᓱᓕᓕᓂᓱᓂᓄᓂᓪᓗ Prior Years Cost (\$000)
<b>ᓱᓱᓕᓕᓂᓱᓂᓄᓂᓪᓗ Kitikmeot Region</b>				
<b>ᐱᓱᓕᓕᓂᓱᓂᓄᓂᓪᓗ Gjoa Haven</b>				
717059	ᓄᓇᓕᓕᓂᓱᓂᓄᓂᓪᓗ ᐱᓱᓕᓕᓂᓱᓂᓄᓂᓪᓗ Community Hall	1,350	-	1,125
<b>ᐱᓱᓕᓕᓂᓱᓂᓄᓂᓪᓗ Kugaaruk</b>				
507545	ᐱᓱᓕᓕᓂᓱᓂᓄᓂᓪᓗ ᐱᓱᓕᓕᓂᓱᓂᓄᓂᓪᓗ Sewage Lagoon	500	70	2,430
<b>ᐱᓱᓕᓕᓂᓱᓂᓄᓂᓪᓗ Kugluktuk</b>				
507537	ᐱᓱᓕᓕᓂᓱᓂᓄᓂᓪᓗ ᐱᓱᓕᓕᓂᓱᓂᓄᓂᓪᓗ ᐱᓱᓕᓕᓂᓱᓂᓄᓂᓪᓗ Sewage Lagoon and Solid Waste	2,500	32	2,015
507546	ᐱᓱᓕᓕᓂᓱᓂᓄᓂᓪᓗ ᐱᓱᓕᓕᓂᓱᓂᓄᓂᓪᓗ ᐱᓱᓕᓕᓂᓱᓂᓄᓂᓪᓗ Water Treatment Plant	450	-	1,150
514115	ᐱᓱᓕᓕᓂᓱᓂᓄᓂᓪᓗ ᐱᓱᓕᓕᓂᓱᓂᓄᓂᓪᓗ ᐱᓱᓕᓕᓂᓱᓂᓄᓂᓪᓗ Hamlet Office Building	1,700	1,000	300
<b>ᐱᓱᓕᓕᓂᓱᓂᓄᓂᓪᓗ Taloyoak</b>				
	ᐱᓱᓕᓕᓂᓱᓂᓄᓂᓪᓗ ᐱᓱᓕᓕᓂᓱᓂᓄᓂᓪᓗ ᐱᓱᓕᓕᓂᓱᓂᓄᓂᓪᓗ Renovation to Community Hall	-	175	-
<b>ᐱᓱᓕᓕᓂᓱᓂᓄᓂᓪᓗ ᐱᓱᓕᓕᓂᓱᓂᓄᓂᓪᓗ Total Kitikmeot Region</b>		<b>6,500</b>		
<b>ᐱᓱᓕᓕᓂᓱᓂᓄᓂᓪᓗ ᐱᓱᓕᓕᓂᓱᓂᓄᓂᓪᓗ ᐱᓱᓕᓕᓂᓱᓂᓄᓂᓪᓗ Total Tangible Assets</b>		<b>18,447</b>		





ᓄᓇᓂᓄ ᓄᓇᓂᓄ ᓄᓇᓂᓄ  
PETROLEUM PRODUCTS DIVISION

ᓄᓇᓂᓄ ᓄᓇᓂᓄ ᓄᓇᓂᓄ Project Number	ᓄᓇᓂᓄ ᓄᓇᓂᓄ ᓄᓇᓂᓄ Detail of Capital	ᓄᓇᓂᓄ ᓄᓇᓂᓄ 2008-2009 Capital Estimates (\$000)	ᓄᓇᓂᓄ ᓄᓇᓂᓄ 2009-2013 Capital Plan (\$000)	ᓄᓇᓂᓄ ᓄᓇᓂᓄ ᓄᓇᓂᓄ ᓄᓇᓂᓄ Prior Years Cost (\$000)
<b>ᓄᓇᓂᓄ ᓄᓇᓂᓄ Tangible Assets</b>				
<b>ᓄᓇᓂᓄ ᓄᓇᓂᓄ Qikiqtaaluk Region</b>				
<b>ᓄᓇᓂᓄ ᓄᓇᓂᓄ Resolute Bay</b>				
506028	ᓄᓇᓂᓄ ᓄᓇᓂᓄ ᓄᓇᓂᓄ ᓄᓇᓂᓄ ᓄᓇᓂᓄ ᓄᓇᓂᓄ ᓄᓇᓂᓄ Tank Farm Capacities and Code Compliance	2,260	2,000	7,435
<b>ᓄᓇᓂᓄ ᓄᓇᓂᓄ Total Qikiqtaaluk Region</b>		<b>2,260</b>		
<b>ᓄᓇᓂᓄ ᓄᓇᓂᓄ Kivalliq Region</b>				
<b>ᓄᓇᓂᓄ ᓄᓇᓂᓄ Rankin Inlet</b>				
514056	ᓄᓇᓂᓄ ᓄᓇᓂᓄ ᓄᓇᓂᓄ ᓄᓇᓂᓄ ᓄᓇᓂᓄ ᓄᓇᓂᓄ ᓄᓇᓂᓄ Tank Farm Capacities and Code Compliance	-	12,000	366
<b>ᓄᓇᓂᓄ ᓄᓇᓂᓄ Total Kivalliq Region</b>		<b>-</b>		
<b>ᓄᓇᓂᓄ ᓄᓇᓂᓄ ᓄᓇᓂᓄ Total Tangible Assets</b>		<b>2,260</b>		



ᐱᑦᑦᑦᑦᑦᑦᑦᑦᑦᑦᑦᑦ  
ᐱᑦᑦᑦᑦᑦᑦᑦᑦᑦᑦᑦᑦ



ECONOMIC DEVELOPMENT  
AND  
TRANSPORTATION

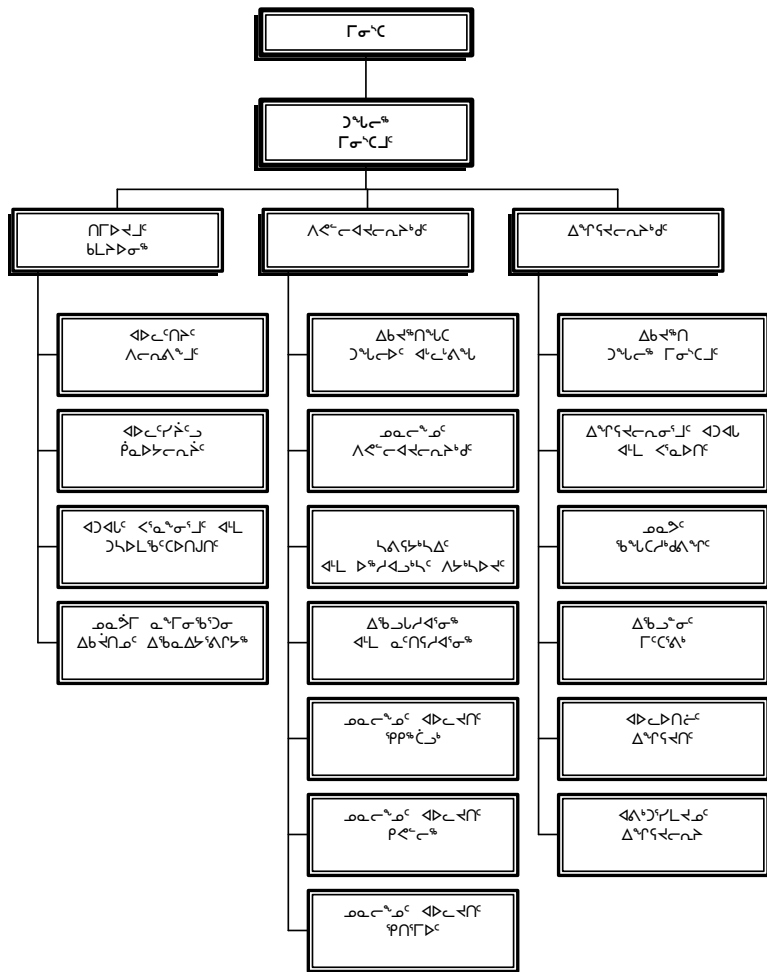
ᑕᐃᐃᐍ ᓕᓕᓕᓕ  
 ᓕᓕᓕ

ᓕᓕᓕᓕ ᓕᓕᓕ  
 ᓕᓕᓕᓕᓕᓕᓕᓕᓕ  
 ᐃᓕᓕᓕᓕᓕᓕᓕᓕ

ᓕᓕᓕᓕ ᓕᓕᓕᓕᓕᓕ  
 ᓕᓕᓕᓕᓕᓕᓕᓕ

ᓕᓕᓕᓕ ᓕᓕᓕ  
 ᓕᓕᓕᓕᓕᓕᓕᓕᓕ  
 ᐱᓄᓕᓕᓕᓕᓕᓕᓕᓕ

ᐱᓄᓕᓕᓕᓕᓕᓕᓕ ᐃᓕᓕᓕᓕᓕᓕᓕᓕ



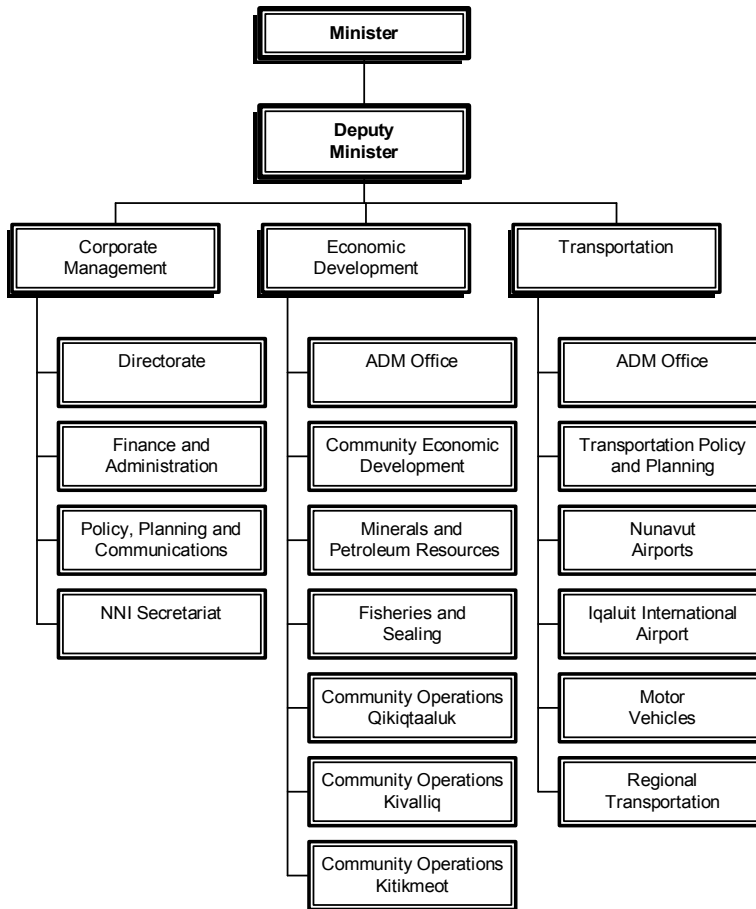
**David Simailak**  
Minister

**Methusalah Kunuk**  
Assistant Deputy Minister  
Transportation

**Rosemary Keenainak**  
Deputy Minister

**Paul Suvega**  
Assistant Deputy Minister  
Economic Development

### ACCOUNTING STRUCTURE CHART















ᐱᓕᓕᓕᓕᓕᓕᓕᓕ  
TRANSPORTATION

ᐱᓕᓕᓕᓕᓕᓕᓕᓕᓕ ᐱᓕᓕᓕᓕᓕᓕᓕ Project Number	ᐱᓕᓕᓕᓕᓕᓕᓕᓕᓕ ᐱᓕᓕᓕᓕᓕᓕᓕᓕ Detail of Capital	ᐱᓕᓕᓕᓕᓕᓕ ᐱᓕᓕᓕᓕᓕᓕᓕ 2008-2009 Capital Estimates (\$000)	ᐱᓕᓕᓕᓕᓕᓕ ᐱᓕᓕᓕᓕᓕᓕᓕᓕ 2009-2013 Capital Plan (\$000)	ᐱᓕᓕᓕᓕᓕᓕ ᐱᓕᓕᓕᓕᓕᓕ Prior Years Cost (\$000)
<b>ᐱᓕᓕᓕᓕᓕᓕ ᐱᓕᓕᓕᓕᓕᓕ Tangible Assets</b>				
<b>ᐱᓕᓕᓕᓕᓕᓕᓕᓕᓕ ᓕᓕᓕᓕᓕᓕᓕᓕ Headquarters Region</b>				
<b>ᓕᓕᓕᓕᓕᓕᓕᓕᓕᓕᓕ Nunavut - Various</b>				
515029	ᓕᓕᓕᓕᓕᓕᓕᓕᓕᓕᓕᓕ ᐱᓕᓕᓕᓕᓕᓕᓕᓕᓕ (ᓕᓕᓕᓕᓕᓕᓕᓕᓕ ᓕᓕᓕᓕᓕᓕ) Small Capital (\$300,000 or less)	1,200	10,000	
<b>ᓕᓕᓕᓕᓕᓕᓕᓕᓕᓕᓕᓕᓕᓕ Total Headquarters Region</b>		<b>1,200</b>		
<b>ᓕᓕᓕᓕᓕᓕᓕᓕᓕᓕᓕᓕ Qikiqtaaluk Region</b>				
<b>ᐱᓕᓕᓕᓕᓕᓕᓕ Arctic Bay</b>				
515024	ᓕᓕᓕᓕᓕᓕᓕᓕᓕᓕᓕᓕ ᐱᓕᓕᓕᓕᓕᓕᓕᓕᓕᓕᓕ Airport Redevelopment	6,400	100	12,400
<b>ᓕᓕᓕᓕᓕᓕ Kimmirut</b>				
515016	ᐱᓕᓕᓕᓕᓕᓕᓕᓕᓕᓕᓕᓕ ᓕᓕᓕᓕᓕᓕᓕᓕᓕᓕ Rehab Runway/Apron	300	-	775
<b>ᓕᓕᓕᓕᓕᓕ Nanisivik</b>				
500059	ᐱᓕᓕᓕᓕᓕᓕᓕᓕᓕ ᓕᓕᓕᓕᓕᓕᓕᓕᓕᓕᓕᓕ Highway Upgrades	70	83	1,300
<b>ᓕᓕᓕᓕᓕᓕᓕᓕᓕᓕᓕᓕᓕᓕ Total Qikiqtaaluk Region</b>		<b>6,770</b>		
<b>ᓕᓕᓕᓕᓕᓕᓕᓕᓕᓕᓕᓕᓕᓕᓕ Total Tangible Assets</b>		<b>7,970</b>		





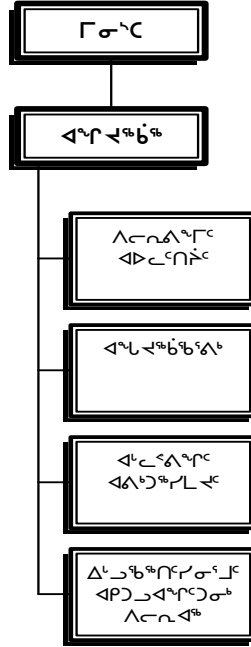
ᑎᓄᓐᓂᓐ ᑕᓄᓐ ᑕᓄᓐ ᑕᓄᓐ ᑕᓄᓐ

ᓄᓇᓂᓂᓂ ᓄᓂᓂᓂ  
 ᓄᓂᓂᓂ

ᓄᓂᓂᓂ ᓄᓂᓂᓂᓂ

ᓄᓂᓂᓂ ᓄᓂᓂᓂ  
 ᓄᓂᓂᓂᓂᓂ ᓄᓂᓂᓂ

ᓂᓴᓂᓂᓂ ᓄᓇᓂᓂᓂ ᓄᓇᓂᓂᓂ

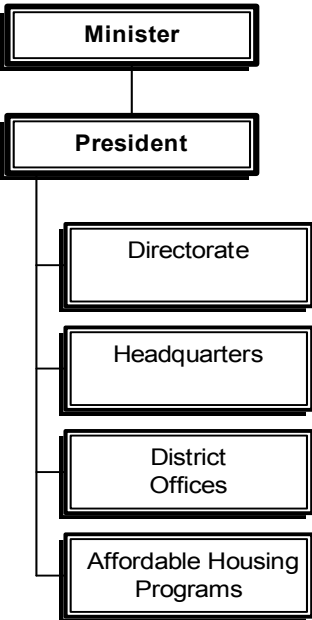


**Olayuk Akesuk**  
Minister

**Peter Scott**  
President

**Patsy Owlijoot**  
Vice President

ACCOUNTING STRUCTURE CHART









ᓄᓇᓂᓴᑦ ᐃᆪᓗᑕᓚᓴᆫᆫᐃᐅᑦ

ᓄᓇᓂᓴᑦ ᐃᆪᓗᑕᓚᓴᆫᆫᐃᐅᑦ ᐃᐃᓗᓚᓴᓴᑦ ᑲᓚᓴᐅᓂᑦ ᐃᆪᓗᆫᓴᑦᓂᑦᓴᑦᓴᑦ ᑭᓇᑲᐃᐅᐃᓇᑦᓂᑦ ᐃᑭᓚ ᐃᆫᓴᑲᓇᐃᆫᓴᑦᓴᑦ ᐃᆪᓗᆫᓴᑦᓂᑦᓴᑦᓴᑦ ᓇᑭᑦᓴᑦᓴᑦᓴᑦ ᓄᑕᑦᓴᑦᓴᑦᓴᑦ ᐃᑲᆫᑦᓂᑦ ᐱᑕᓚᓴᐅᑦᓴᑦᓴᑦ ᐃᑭᓚ ᐃᑲᓗᑕᓚᓴᑦᓴᑦ ᐃᑲᆫᓴᑦᓴᑦᓴᑦ ᓄᓇᓂᓴᑦᓴᑦᓴᑦ, ᐃᑲᆫᓴᑦᓴᑦᓴᑦ ᐱᑕᓚᓴᑲᓚᓴᑦᓴᑦᓴᑦ, ᓄᓇᑕᓴᓂ ᐃᆪᓗᑕᓚᓴᑦ ᑲᓗᓴᓴᑦᓴᑦᓴᑦᓴᑦ. ᐃᐃᓗᓚᓴᓴᑦ ᓄᓇᓂᓴᑦ ᓚᓇᓚᓴᑦᓴᑦᓴᑦᓴᑦ ᐃᑲᆫᑦᓂᑦᓴᑦᓴᑦ ᐃᑕᐃᓇᓇᐃᓴᑦᓴᑦᓴᑦ ᑭᓇᐃᆫᓴᑦᓴᑦᓴᑦ ᐃᑭᓚ ᐅᓄᑦᓴᑦᓴᑦ ᓂᓴᐃᓴᑦᓴᑦᓴᑦᓴᑦ ᓚᑕᓚᑕᐅᑦᓴᑦᓴᑦ ᑲᓚᓚᓴᑦᓴᑦᓴᑦ. ᐃᐃᓗᓚᓴᓴᑦ ᑭᓇᐃᆫᓴᑦᓴᑦᓴᑦ ᐃᑲᆫᑦᓂᑦᓴᑦᓴᑦᓴᑦ ᑲᓇᑕᐅᑦ ᐃᆪᓗᑕᓚᓴᑦᓴᑦᓴᑦᓴᑦ ᐃᐃᓗᓚᓴᓴᑦ, ᐃᑕᓴᑲᓴᑦᓴᑦ ᐃᑕᑕᐅᓴᑦᓴᑦ ᐃᑭᓚ ᐃᓴᑦᓴᑦᓴᑦ ᑭᓇᐃᆫᓴᑦᓴᑦᓴᑦᓴᑦ.

NUNAVUT HOUSING CORPORATION

The Nunavut Housing Corporation provides public and staff rental housing, homeownership, renovation programs and related services to residents of Nunavut, with the assistance of our partners, the local housing organizations. The contributions to the corporation are the Government of Nunavut's share only and this is the amount voted by the Legislative Assembly. The corporation receives additional funding through contributions provided through the Canada Mortgage and Housing Corporation (CMHC), tenant rentals and other income.

ᐃᑭᓴᑦᓴᑦ ᐃᑕᑕᓴᑦᓴᑦ	Capital Expenditures	ᐃᑕᓴᑦᓴᑦᓴᑦ ᐃᑕᓴᑦᓴᑦᓴᑦ 2008-2009 Capital Estimates (\$000)	ᐃᑕᓴᑦᓴᑦᓴᑦ ᐃᑕᓴᑦᓴᑦᓴᑦ 2007-2008 Revised Estimates (\$000)	ᐃᑕᓴᑦᓴᑦᓴᑦ ᐃᑕᓴᑦᓴᑦᓴᑦ 2007-2008 Capital Estimates (\$000)	ᑭᓇᐃᑦᓴᑦ ᐃᑕᑕᓴᑦᓴᑦᓴᑦ 2006-2007 Actual Expenditures (\$000)
ᑕᓂᑦᓴᑦᓴᑦ ᐃᑲᆫᑦᓴᑦᓴᑦ	Grants and Contributions	19,125	15,983	15,983	112,033
ᐃᑕᓴᑦᓴᑦ ᐱᑦᐃᑦᓴᑦ	Tangible Assets	-	-	-	-
ᑦᓴᓚᑕᐅᓴᑦᓴᑦ ᓴᑕᐃᓇᑦᓴᑦ ᓚᓴᑕᓴᑦᓴᑦᓴᑦ	Computer Hardware and Software	-	-	-	-
<b>ᑲᓚᑕᓴᑦᓴᑦ ᐃᑕᓴᑦᓴᑦᓴᑦ ᐃᑕᑕᓴᑦᓴᑦ</b>	<b>Total Capital Expenditures</b>	<b>19,125</b>	<b>15,983</b>	<b>15,983</b>	<b>112,033</b>

ᓄᓇᓂᓴᑦ ᐃᓪᓗᑕᓪᓂᓴᑦᐱᓪᓂᓴᑦ  
NUNAVUT HOUSING CORPORATION

ᐱᑕᓪᓂᓴᑦᐱᓪᓂᓴᑦ ᐃᓪᓗᓂᓴᑦ Project Number	ᐱᓂᓴᑦᐱᓪᓂᓴᑦ ᓄᓇᓂᓴᑦᐱᓪᓂᓴᑦ Detail of Capital	ᐱᓂᓴᑦᐱᓪᓂᓴᑦ 2008-2009 Capital Estimates (\$000)	ᐱᓂᓴᑦᐱᓪᓂᓴᑦ 2009-2013 Capital Plan (\$000)	ᐱᓂᓴᑦᐱᓪᓂᓴᑦ ᐱᓂᓴᑦᐱᓪᓂᓴᑦ ᐱᓂᓴᑦᐱᓪᓂᓴᑦ Prior Years Cost (\$000)
<b>ᓗᓂᓴᑦᐱᓪᓂᓴᑦ ᐱᓂᓴᑦᐱᓪᓂᓴᑦ Grants and Contributions</b>				
<b>ᐱᓂᓴᑦᐱᓪᓂᓴᑦ ᐱᓂᓴᑦᐱᓪᓂᓴᑦ Headquarters Region</b>				
<b>ᓄᓇᓂᓴᑦ-ᓄᓂᓗᓂᓴᑦ Nunavut - Various</b>				
	ᐃᓂᓴᑦᐱᓪᓂᓴᑦ ᐃᓂᓴᑦᐱᓪᓂᓴᑦ Fire Damaged Replacement	1,000	4,000	1,000
	ᓴᓄᓂᓴᑦᐱᓪᓂᓴᑦ ᐱᓂᓴᑦᐱᓪᓂᓴᑦ / ᓴᓄᓂᓴᑦᐱᓪᓂᓴᑦ - ᐃᓂᓴᑦᐱᓪᓂᓴᑦ ᐃᓂᓴᑦ M & I / Retrofit - Staff Housing	500	2,000	500
	ᐃᓂᓴᑦᐱᓪᓂᓴᑦ ᐃᓂᓴᑦ ᐱᓂᓴᑦᐱᓪᓂᓴᑦ Staff Housing New Supply	6,875	23,950	2,500
	ᑦᓂᓴᑦᐱᓪᓂᓴᑦ ᐱᓂᓴᑦᐱᓪᓂᓴᑦ (\$300,000 ᐃᓂᓴᑦᐱᓪᓂᓴᑦ ᓗᓂᓴᑦ) Small Capital Projects (\$300,000 or less)	700	2,800	
<b>ᓂᓂᓴᑦᐱᓪᓂᓴᑦ ᐱᓂᓴᑦᐱᓪᓂᓴᑦ ᐱᓂᓴᑦᐱᓪᓂᓴᑦ Total Headquarters Region</b>		<b>9,075</b>		

**ᓴᓂᓴᑦᐱᓪᓂᓴᑦ ᐱᓂᓴᑦᐱᓪᓂᓴᑦ Qikiqtaaluk Region**

**ᐃᓂᓴᑦᐱᓪᓂᓴᑦ Arctic Bay**

ᓴᓄᓂᓴᑦᐱᓪᓂᓴᑦ ᐱᓂᓴᑦᐱᓪᓂᓴᑦ / ᓴᓄᓂᓴᑦᐱᓪᓂᓴᑦ - ᓄᓇᓂᓴᑦ ᓂᓴᑦ ᓂᓴᑦᐱᓪᓂᓴᑦ	300	997	308
M & I / Retrofit - GN Funds			
ᓴᓂᓴᑦᐱᓪᓂᓴᑦ Warehouse	-	-	1,000

**ᓂᓴᑦᐱᓪᓂᓴᑦ Cape Dorset**

ᓴᓄᓂᓴᑦᐱᓪᓂᓴᑦ ᐱᓂᓴᑦᐱᓪᓂᓴᑦ / ᓴᓄᓂᓴᑦᐱᓪᓂᓴᑦ - ᓄᓇᓂᓴᑦ ᓂᓴᑦ ᓂᓴᑦᐱᓪᓂᓴᑦ	383	1,515	431
M & I / Retrofit - GN Funds			

**ᓂᓴᑦᐱᓪᓂᓴᑦ Clyde River**

ᓴᓄᓂᓴᑦᐱᓪᓂᓴᑦ ᐱᓂᓴᑦᐱᓪᓂᓴᑦ / ᓴᓄᓂᓴᑦᐱᓪᓂᓴᑦ - ᓄᓇᓂᓴᑦ ᓂᓴᑦ ᓂᓴᑦᐱᓪᓂᓴᑦ	270	989	273
M & I / Retrofit - GN Funds			

**ᐱᓂᓴᑦᐱᓪᓂᓴᑦ Grise Fiord**

ᓴᓄᓂᓴᑦᐱᓪᓂᓴᑦ ᐱᓂᓴᑦᐱᓪᓂᓴᑦ / ᓴᓄᓂᓴᑦᐱᓪᓂᓴᑦ - ᓄᓇᓂᓴᑦ ᓂᓴᑦ ᓂᓴᑦᐱᓪᓂᓴᑦ	125	392	127
M & I / Retrofit - GN Funds			

ᓄᓚᓴᒻᒃ ᐃᓪᓐᓐᓐᓐᓐᓐᓐ

NUNAVUT HOUSING CORPORATION

ᐱᓐᓐᓐᓐᓐᓐᓐ ᓄᓴᓐᓐᓐᓐ Project Number	ᐅᓴᓴᓴᓴᓴ ᓄᓚᓴᓴᓴᓴᓴᓴ Detail of Capital	ᐅᓴᓴᓴᓴᓴᓴᓴ ᐅᓴᓴᓴᓴᓴᓴᓴᓴ 2008-2009 Capital Estimates (\$000)	ᐅᓴᓴᓴᓴᓴᓴᓴ ᐅᓴᓴᓴᓴᓴᓴᓴᓴ 2009-2013 Capital Plan (\$000)	ᐅᓴᓴᓴᓴᓴᓴᓴ ᐅᓴᓴᓴᓴᓴᓴᓴ ᐅᓴᓴᓴᓴᓴᓴᓴ Prior Years Cost (\$000)
<b>ᓴᓴᓴᓴᓴ</b>	<b>Hall Beach</b>			
	ᓴᓴᓴᓴᓴᓴᓴ ᐅᓴᓴᓴᓴᓴᓴᓴᓴᓴᓴᓴ / ᓴᓴᓴᓴᓴᓴᓴᓴᓴᓴᓴ - ᓄᓚᓴᓴ ᓴᓴᓴᓴᓴᓴᓴᓴᓴᓴᓴ ᓴᓴᓴᓴᓴᓴᓴᓴᓴᓴᓴᓴᓴ M & I / Retrofit - GN Funds	195	711	208
<b>ᐃᓴᓴᓴᓴᓴ</b>	<b>Igloolik</b>			
	ᓴᓴᓴᓴᓴᓴᓴ ᐅᓴᓴᓴᓴᓴᓴᓴᓴᓴᓴᓴᓴ / ᓴᓴᓴᓴᓴᓴᓴᓴᓴᓴᓴ - ᓄᓚᓴᓴ ᓴᓴᓴᓴᓴᓴᓴᓴᓴᓴᓴ ᓴᓴᓴᓴᓴᓴᓴᓴᓴᓴᓴᓴᓴᓴ M & I / Retrofit - GN Funds	376	1,324	446
<b>ᐃᓴᓴᓴᓴᓴᓴ</b>	<b>Iqaluit</b>			
	ᓴᓴᓴᓴᓴᓴᓴ ᐅᓴᓴᓴᓴᓴᓴᓴᓴᓴᓴᓴᓴ / ᓴᓴᓴᓴᓴᓴᓴᓴᓴᓴᓴ - ᓄᓚᓴᓴ ᓴᓴᓴᓴᓴᓴᓴᓴᓴᓴᓴ ᓴᓴᓴᓴᓴᓴᓴᓴᓴᓴᓴᓴᓴᓴ M & I / Retrofit - GN Funds	862	2,447	799
<b>ᓴᓴᓴᓴᓴᓴᓴ</b>	<b>Kimmirut</b>			
	ᓴᓴᓴᓴᓴᓴᓴ ᐅᓴᓴᓴᓴᓴᓴᓴᓴᓴᓴᓴᓴ / ᓴᓴᓴᓴᓴᓴᓴᓴᓴᓴᓴ - ᓄᓚᓴᓴ ᓴᓴᓴᓴᓴᓴᓴᓴᓴᓴᓴ ᓴᓴᓴᓴᓴᓴᓴᓴᓴᓴᓴᓴᓴᓴ M & I / Retrofit - GN Funds	129	517	131
<b>ᐅᓴᓴᓴᓴᓴᓴᓴᓴ</b>	<b>Pangnirtung</b>			
	ᓴᓴᓴᓴᓴᓴᓴ ᐅᓴᓴᓴᓴᓴᓴᓴᓴᓴᓴᓴᓴ / ᓴᓴᓴᓴᓴᓴᓴᓴᓴᓴᓴ - ᓄᓚᓴᓴ ᓴᓴᓴᓴᓴᓴᓴᓴᓴᓴᓴ ᓴᓴᓴᓴᓴᓴᓴᓴᓴᓴᓴᓴᓴᓴ M & I / Retrofit - GN Funds	455	1,732	471
<b>ᓴᓴᓴᓴᓴᓴᓴᓴᓴ</b>	<b>Pond Inlet</b>			
	ᓴᓴᓴᓴᓴᓴᓴ ᐅᓴᓴᓴᓴᓴᓴᓴᓴᓴᓴᓴᓴ / ᓴᓴᓴᓴᓴᓴᓴᓴᓴᓴᓴ - ᓄᓚᓴᓴ ᓴᓴᓴᓴᓴᓴᓴᓴᓴᓴᓴ ᓴᓴᓴᓴᓴᓴᓴᓴᓴᓴᓴᓴᓴᓴ M & I / Retrofit - GN Funds	456	1,543	459
<b>ᓴᓴᓴᓴᓴᓴᓴᓴᓴᓴᓴᓴᓴᓴᓴ</b>	<b>Qikiqtarjuaq</b>			
	ᓴᓴᓴᓴᓴᓴᓴ ᐅᓴᓴᓴᓴᓴᓴᓴᓴᓴᓴᓴᓴ / ᓴᓴᓴᓴᓴᓴᓴᓴᓴᓴᓴ - ᓄᓚᓴᓴ ᓴᓴᓴᓴᓴᓴᓴᓴᓴᓴᓴ ᓴᓴᓴᓴᓴᓴᓴᓴᓴᓴᓴᓴᓴᓴ M & I / Retrofit - GN Funds	271	813	272
<b>ᓴᓴᓴᓴᓴᓴᓴᓴᓴᓴᓴᓴᓴ</b>	<b>Resolute Bay</b>			
	ᓴᓴᓴᓴᓴᓴᓴ ᐅᓴᓴᓴᓴᓴᓴᓴᓴᓴᓴᓴᓴ / ᓴᓴᓴᓴᓴᓴᓴᓴᓴᓴᓴ - ᓄᓚᓴᓴ ᓴᓴᓴᓴᓴᓴᓴᓴᓴᓴᓴ ᓴᓴᓴᓴᓴᓴᓴᓴᓴᓴᓴᓴᓴᓴ M & I / Retrofit - GN Funds	126	231	123

ᓄᓇᓂᓄᓐ ᐃᓚᓗᓕᓚᓐᓴᓴᐃᓄᓐ  
NUNAVUT HOUSING CORPORATION

ᐱᓕᓚᐃᓴᓴᓄᓐ ᐃᓴᓂᓐᓴᓐ Project Number	ᐃᓂᓗᓴᓴᓄᓐ ᓄᓗᓇᐃᓚᓗᓴᓴᓄᓐ Detail of Capital	ᐃᓂᓗᓴᓴᓄᓐ ᐃᓂᓗᓴᓴᓄᓐ 2008-2009 Capital Estimates (\$000)	ᐃᓂᓗᓴᓴᓄᓐ ᐃᓂᓗᓴᓴᓄᓐ 2009-2013 Capital Plan (\$000)	ᐃᓂᓗᓴᓴᓄᓐ ᐃᓂᓗᓴᓴᓄᓐ ᐃᓂᓗᓴᓴᓄᓐ ᐃᓂᓗᓴᓴᓄᓐ Prior Years Cost (\$000)
<b>ᓴᓂᓂᓗᓴᓴᓄᓐ Sanikiluaq</b>				
	ᓴᓄᓂᓂᓗᓴᓴᓄᓐ ᐃᓂᓗᓴᓴᓄᓐ ᐃᓂᓗᓴᓴᓄᓐ / ᓴᓄᓂᓂᓗᓴᓴᓄᓐ ᐃᓂᓗᓴᓴᓄᓐ - ᓄᓇᓂᓄᓐ ᓴᓴᓴᓄᓐ ᓂᓗᓴᓴᓄᓐ M & I / Retrofit - GN Funds	201	383	210
<b>ᓴᓂᓂᓗᓴᓴᓄᓐ - ᓄᓂᓂᓗᓴᓴᓄᓐ Qikiqtaaluk - Various</b>				
	ᓄᓂᓂᓗᓴᓴᓄᓐ ᐃᓂᓗᓴᓴᓄᓐ ᐃᓂᓗᓴᓴᓄᓐ Homeowner Programs	1,000	4,000	1,000
<b>ᓂᓂᓗᓴᓴᓄᓐ ᓴᓂᓂᓗᓴᓴᓄᓐ Total Qikiqtaaluk Region</b>		<b>5,149</b>		
<b>ᓂᓂᓗᓴᓴᓄᓐ Kivalliq Region</b>				
<b>ᐃᓂᓗᓴᓴᓄᓐ Arviat</b>				
	ᓴᓄᓂᓂᓗᓴᓴᓄᓐ ᐃᓂᓗᓴᓴᓄᓐ ᐃᓂᓗᓴᓴᓄᓐ / ᓴᓄᓂᓂᓗᓴᓴᓄᓐ ᐃᓂᓗᓴᓴᓄᓐ - ᓄᓇᓂᓄᓐ ᓴᓴᓴᓄᓐ ᓂᓗᓴᓴᓄᓐ M & I / Retrofit - GN Funds	473	1,750	378
<b>ᓴᓂᓂᓗᓴᓴᓄᓐ Baker Lake</b>				
	ᓴᓄᓂᓂᓗᓴᓴᓄᓐ ᐃᓂᓗᓴᓴᓄᓐ ᐃᓂᓗᓴᓴᓄᓐ / ᓴᓄᓂᓂᓗᓴᓴᓄᓐ ᐃᓂᓗᓴᓴᓄᓐ - ᓄᓇᓂᓄᓐ ᓴᓴᓴᓄᓐ ᓂᓗᓴᓴᓄᓐ M & I / Retrofit - GN Funds	368	1,387	473
<b>ᐃᓂᓗᓴᓴᓄᓐ Chesterfield Inlet</b>				
	ᓴᓄᓂᓂᓗᓴᓴᓄᓐ ᐃᓂᓗᓴᓴᓄᓐ ᐃᓂᓗᓴᓴᓄᓐ / ᓴᓄᓂᓂᓗᓴᓴᓄᓐ ᐃᓂᓗᓴᓴᓄᓐ - ᓄᓇᓂᓄᓐ ᓴᓴᓴᓄᓐ ᓂᓗᓴᓴᓄᓐ M & I / Retrofit - GN Funds	215	566	281
<b>ᓴᓂᓂᓗᓴᓴᓄᓐ Coral Harbour</b>				
	ᓴᓄᓂᓂᓗᓴᓴᓄᓐ ᐃᓂᓗᓴᓴᓄᓐ ᐃᓂᓗᓴᓴᓄᓐ / ᓴᓄᓂᓂᓗᓴᓴᓄᓐ ᐃᓂᓗᓴᓴᓄᓐ - ᓄᓇᓂᓄᓐ ᓴᓴᓴᓄᓐ ᓂᓗᓴᓴᓄᓐ M & I / Retrofit - GN Funds	244	750	314
<b>ᓂᓂᓗᓴᓴᓄᓐ Rankin Inlet</b>				
	ᓴᓄᓂᓂᓗᓴᓴᓄᓐ ᐃᓂᓗᓴᓴᓄᓐ ᐃᓂᓗᓴᓴᓄᓐ / ᓴᓄᓂᓂᓗᓴᓴᓄᓐ ᐃᓂᓗᓴᓴᓄᓐ - ᓄᓇᓂᓄᓐ ᓴᓴᓴᓄᓐ ᓂᓗᓴᓴᓄᓐ M & I / Retrofit - GN Funds	564	1,976	388



ᓄᓇᓂᓄᓐ ᐃᓕᓕᓕᓐ ᓐᓐᓐᓐ  
NUNAVUT HOUSING CORPORATION

ᐱᓕᓕᓐᓐᓐᓐᓐ ᓐᓐᓐᓐᓐ Project Number	ᐱᓕᓕᓐᓐᓐᓐᓐ ᓐᓐᓐᓐᓐ Detail of Capital	ᐱᓕᓕᓐᓐᓐᓐᓐ 2008-2009 Capital Estimates (\$000)	ᐱᓕᓕᓐᓐᓐᓐᓐ 2009-2013 Capital Plan (\$000)	ᐱᓕᓕᓐᓐᓐᓐᓐ ᐱᓕᓕᓐᓐᓐ ᐱᓕᓕᓐᓐᓐ Prior Years Cost (\$000)
	<b>ᓕᓐᓐᓐᓐ Taloyoak</b>			
	ᓐᓐᓐᓐᓐᓐ ᐱᓕᓕᓐᓐᓐᓐᓐᓐ / ᓐᓐᓐᓐᓐᓐᓐᓐ - ᓄᓇᓂᓄᓐ ᓐᓐᓐᓐ ᓐᓐᓐᓐᓐᓐᓐ M & I / Retrofit - GN Funds	264	788	273
	<b>ᓐᓐᓐᓐᓐᓐ - ᓄᓂᓐᓐᓐᓐ Various Kitikmeot</b>			
	ᓐᓐᓐᓐᓐᓐ ᐃᓕᓕᓐᓐᓐᓐᓐᓐ Homeowner Programs	450	1,800	450
	<b>ᓐᓐᓐᓐᓐᓐ ᓐᓐᓐᓐᓐᓐ Total Kitikmeot Region</b>	<b>2,090</b>		
	<b>ᓐᓐᓐᓐᓐᓐ ᓐᓐᓐᓐᓐᓐ ᐱᓕᓕᓐᓐᓐᓐ Total Grants and Contributions</b>	<b>19,125</b>		









Δᑦᑦᑦᑦᑦᑦ ᑎᑦᑦᑦᑦᑦ



APPENDIX I: GLOSSARY





## GLOSSARY

Accounting Structure Chart	Departmental structure starting with the Minister, Deputy Minister(s), Branch and Division levels consistent with the classification of accounts.
Appropriation	Authority contained in an Act to incur expenditure.
Branch	Departments are further sub-divided into Branches.
Branch Summary	Describes the major responsibilities and summarizes capital expenditures for the Branch.
Budget	An estimate of proposed expenditures for a given period and the proposed means (revenue estimates) of financing those expenditures.
Capital Asset	Physical property used in the operations of the government, and not intended for sale. Capital assets will have a useful life of one year or longer.
Capital Expenditures	Government expenditures for the purchase or construction of a capital asset; an outlay that increases the expected useful life of an existing capital asset; planning and study costs related to capital asset acquisition or construction; or grants and contributions to other agencies for the purpose of capital acquisition or construction.
Capital Lease	A lease agreement for real property where the benefits and risks have been substantially transferred to the government, even though ownership remains with the lessor.
Capital Projects	Projects established for the purchase or construction of Capital Assets. A capital project includes a purchase of land or equipment and/or the construction of a building or other facility; planning and study costs related to capital asset acquisition or construction; or grants and contributions to other agencies for the purpose of capital acquisition or construction.
Contribution	A conditional transfer of appropriated funds to a public agency, community government or other organization that is accountable to the government for the use of the funds and fulfillment of the objectives for which the funding is provided.
Department	Organizational entity, established by Cabinet to deliver programs and services within a specified mandate.
Department Summary	Describes the Mission or purpose, and summarizes the Detail of Expenditures for each Department.
Detail of Capital	A listing of the capital projects by Standard Object and geographic area within a Branch.

GLOSSARY

Estimates	The estimate of expenditures and revenues approved by the Legislative Assembly for all government departments.
Fiscal Year	A consecutive twelve-month period designated as the reporting year of a government or organization. The Government of Nunavut’s fiscal year starts April 1 and ends March 31 of the following calendar year.
Grant	An unconditional transfer of appropriated funds to a public agency, group or organization for which the recipient is, with the exception of meeting the eligibility criteria for the grant, not accountable to the government.
Objects of Expenditure	<p>Votes and Items of expenditure are broken down into greater detail termed Control, Standard, and Detailed Objects of expenditure. In the Capital Estimates, expenditures are presented within three Standard Objects of Expenditure:</p> <ul style="list-style-type: none"> <li>- Grants and Contributions</li> <li>- Tangible Assets</li> <li>- Computer Hardware and Software</li> </ul>
Regions	Geographical sub-divisions of Nunavut for administrative purposes.
Vote	A category of expenditure according to its intended use (e.g. Vote 1- Operations and Maintenance, Vote 2 – Capital).





## Δρϑϑϑϑϑ ϑϑ: ϑΔϑϑϑϑϑϑϑ



## APPENDIX II: ABBREVIATIONS







Δρϭϭϭϭ ϩϩ:  
ϭϭϭϭ ϭϭϭϭ ϭϭϭϭ ϭϭϭϭ



**APPENDIX III:**  
**FIVE YEAR CAPITAL PLAN**



ᐃᓯᓪᓴᓯᐱᓂᓯᓪᓴᓯᐱᓂᓯᓪᓴᓯᐱᓂᓯᓪᓴᓯᐱᓂᓯᓪᓴᓯᐱᓂ  
INDEX: PROJECTS BY DEPARTMENT

ᐃᓯᓪᓴᓯᐱᓂᓯᓪᓴᓯᐱᓂᓯᓪᓴᓯᐱᓂᓯᓪᓴᓯᐱᓂᓯᓪᓴᓯᐱᓂ Introduction	AIII-2
ᐱᐱᓯᓴᓴᓂ ᐱᓪᓴᓪᓴᓯᐱᓂᓯᓪᓴᓯᐱᓂᓯᓪᓴᓯᐱᓂᓯᓪᓴᓯᐱᓂ Office of the Legislative Assembly	AIII-4
ᐱᓪᓴᓪᓴᓯᐱᓂᓯᓪᓴᓯᐱᓂᓯᓪᓴᓯᐱᓂᓯᓪᓴᓯᐱᓂ Justice	AIII-5
ᐃᓪᓴᓪᓴᓯᐱᓂᓯᓪᓴᓯᐱᓂᓯᓪᓴᓯᐱᓂᓯᓪᓴᓯᐱᓂ Culture, Language, Elders and Youth	AIII-6
ᐃᓪᓴᓪᓴᓯᐱᓂᓯᓪᓴᓯᐱᓂᓯᓪᓴᓯᐱᓂᓯᓪᓴᓯᐱᓂ Education	AIII-7
ᐃᓪᓴᓪᓴᓯᐱᓂᓯᓪᓴᓯᐱᓂᓯᓪᓴᓯᐱᓂᓯᓪᓴᓯᐱᓂ Health and Social Services	AIII-9
ᐃᓪᓴᓪᓴᓯᐱᓂᓯᓪᓴᓯᐱᓂᓯᓪᓴᓯᐱᓂᓯᓪᓴᓯᐱᓂ Environment	AIII-11
ᐃᓪᓴᓪᓴᓯᐱᓂᓯᓪᓴᓯᐱᓂᓯᓪᓴᓯᐱᓂᓯᓪᓴᓯᐱᓂ Community and Government Services	AIII-12
ᐃᓪᓴᓪᓴᓯᐱᓂᓯᓪᓴᓯᐱᓂᓯᓪᓴᓯᐱᓂᓯᓪᓴᓯᐱᓂ Economic Development and Transportation	AIII-15
ᐃᓪᓴᓪᓴᓯᐱᓂᓯᓪᓴᓯᐱᓂᓯᓪᓴᓯᐱᓂᓯᓪᓴᓯᐱᓂ Nunavut Housing Corporation	AIII-16





## FIVE YEAR CAPITAL PLAN INTRODUCTION

While subject to revision each year, the 5-Year Capital Plan provides a framework for review of the Government's future capital expenditure priorities, including planned expenditures for the forthcoming budget year, 2008-2009.

The Standing Committees reviewed the Capital Plan in September/October 2007, prior to tabling of the 2008-2009 Capital Estimates in the Legislative Assembly in November 2007.

The 5-Year Capital Plan outlines \$98.3 million in expenditures for 2008-2009, and a total of approximately \$411.3 million over the five-year Capital Plan period. Projects are arranged by department, region and community.

With the inclusion of expenditures on the Qikiqtani General Hospital in Iqaluit, the Department of Health and Social Services will receive about 14.6% of total appropriations in 2008-2009. Other major capital expenditures will be in the Departments of Community and Government Services (23.5%), Education (26.0%), and the Nunavut Housing Corporation with about 19.4% of the total in 2008-2009.

The Plan details expenditures planned primarily from Vote 2 - Capital.

ᐱᓕᓂᐱᐅᓯᓕᓴᓂᓴ ᓂᓂᐱᓯᓕᓴᓂᓴ ᐱᓕᓂᓴᐱᓴᓴ  
OFFICE OF THE LEGISLATIVE ASSEMBLY

ᐱᓕᓂᐱᐅᓯᓕᓴᓂᓴ ᐱᓕᓂᐱᐅᓯᓕᓴᓂᓴ ᐱᓕᓂᐱᐅᓯᓕᓴᓂᓴ Five (5) Year Capital Plan	ᐱᓕᓂᐱᐅᓯᓕᓴᓂᓴ					
	ᐱᓕᓂᐱᐅᓯᓕᓴᓂᓴ 2007/08 Revised Budget	ᐱᓕᓂᐱᐅᓯᓕᓴᓂᓴ 2008/09 Budget	ᐱᓕᓂᐱᐅᓯᓕᓴᓂᓴ 2009/10 Planned	ᐱᓕᓂᐱᐅᓯᓕᓴᓂᓴ 2010/11 Planned	ᐱᓕᓂᐱᐅᓯᓕᓴᓂᓴ 2011/12 Planned	ᐱᓕᓂᐱᐅᓯᓕᓴᓂᓴ 2012/13 Planned
<b>ᐱᓕᓂᐱᐅᓯᓕᓴᓂᓴ ᐱᓕᓂᐱᐅᓯᓕᓴᓂᓴ</b> <b>Headquarters Region</b>						
<b>ᐱᓕᓂᐱᐅᓯᓕᓴᓂᓴ Iqaluit</b>						
ᐱᓕᓂᐱᐅᓯᓕᓴᓂᓴ ᐱᓕᓂᐱᐅᓯᓕᓴᓂᓴ ᐱᓕᓂᐱᐅᓯᓕᓴᓂᓴ ᐱᓕᓂᐱᐅᓯᓕᓴᓂᓴ Capital Reserve For New Building	500	500	500	500	500	500
ᐱᓕᓂᐱᐅᓯᓕᓴᓂᓴ ᓂᓂᐱᓯᓕᓴᓂᓴ ᐱᓕᓂᐱᐅᓯᓕᓴᓂᓴ ᐱᓕᓂᐱᐅᓯᓕᓴᓂᓴ Upgrade to Chamber and Offices	-	150	-	-	-	-
ᐱᓕᓂᐱᐅᓯᓕᓴᓂᓴ ᐱᓕᓂᐱᐅᓯᓕᓴᓂᓴ ᐱᓕᓂᐱᐅᓯᓕᓴᓂᓴ ᐱᓕᓂᐱᐅᓯᓕᓴᓂᓴ ᐱᓕᓂᐱᐅᓯᓕᓴᓂᓴ Election Year MLA Furniture and Equipment	-	235	-	-	-	-
ᐱᓕᓂᐱᐅᓯᓕᓴᓂᓴ ᐱᓕᓂᐱᐅᓯᓕᓴᓂᓴ ᐱᓕᓂᐱᐅᓯᓕᓴᓂᓴ Audio Visual System - Upgrade	-	125	30	30	30	30
ᐱᓕᓂᐱᐅᓯᓕᓴᓂᓴ ᐱᓕᓂᐱᐅᓯᓕᓴᓂᓴ ᐱᓕᓂᐱᐅᓯᓕᓴᓂᓴ Broadcasting System - Upgrade	-	-	-	-	-	100
ᐱᓕᓂᐱᐅᓯᓕᓴᓂᓴ ᐱᓕᓂᐱᐅᓯᓕᓴᓂᓴ Photocopier - Upgrade	-	-	-	30	30	30
ᐱᓕᓂᐱᐅᓯᓕᓴᓂᓴ ᐱᓕᓂᐱᐅᓯᓕᓴᓂᓴ (ᐱᓕᓂᐱᐅᓯᓕᓴᓂᓴ ᐱᓕᓂᐱᐅᓯᓕᓴᓂᓴ) Small Capital (\$300,000 or less)	140	150	300	202	162	212
<b>ᐱᓕᓂᐱᐅᓯᓕᓴᓂᓴ ᐱᓕᓂᐱᐅᓯᓕᓴᓂᓴ Total Headquarters</b>		<b>1,160</b>	<b>830</b>	<b>762</b>	<b>722</b>	<b>872</b>
<b>ᐱᓕᓂᐱᐅᓯᓕᓴᓂᓴ ᐱᓕᓂᐱᐅᓯᓕᓴᓂᓴ ᐱᓕᓂᐱᐅᓯᓕᓴᓂᓴ ᐱᓕᓂᐱᐅᓯᓕᓴᓂᓴ Total Office of the Legislative Assembly</b>		<b>1,160</b>	<b>830</b>	<b>762</b>	<b>722</b>	<b>872</b>

ΓΓΓΓΓΓΓΓ  
 JUSTICE

ΓΓΓΓΓΓ ΓΓΓΓΓΓ ΓΓΓΓΓΓ ΓΓΓΓΓΓ	ΓΓΓΓΓΓΓΓΓΓ					
	ΓΓΓΓΓΓ	ΓΓΓΓΓΓ	ΓΓΓΓΓΓ	ΓΓΓΓΓΓ	ΓΓΓΓΓΓ	ΓΓΓΓΓΓ
Five (5) Year Capital Plan	2007/08 Revised Budget	2008/09 Budget	2009/10 Planned	2010/11 Planned	2011/12 Planned	2012/13 Planned
<b>ΓΓΓΓΓΓΓΓΓΓ ΓΓΓΓΓΓ Region</b>						
<b>ΓΓΓΓΓΓ - ΓΓΓΓΓΓ ΓΓΓΓΓΓ Nunavut - Various</b>						
ΓΓΓΓΓΓ ΓΓΓΓΓΓ (\$300,000 ΓΓΓΓΓΓ ΓΓΓΓΓΓ)	425	400	400	400	400	400
Small Capital (\$300,000 or less)						
<b>ΓΓΓΓΓΓ ΓΓΓΓΓΓΓΓΓΓ ΓΓΓΓΓΓ Total Headquarters</b>		<b>400</b>	<b>400</b>	<b>400</b>	<b>400</b>	<b>400</b>
<b>ΓΓΓΓΓΓ ΓΓΓΓΓΓ Kivalliq Region</b>						
<b>ΓΓΓΓΓΓ ΓΓΓΓΓΓ Rankin Inlet</b>						
ΔΓΓΓΓΓΓ	2,442	2,500	15,200	10,200	3,050	500
Correctional Centre						
<b>ΓΓΓΓΓΓ ΓΓΓΓΓΓ ΓΓΓΓΓΓ Total Kivalliq Region</b>		<b>2,500</b>	<b>15,200</b>	<b>10,200</b>	<b>3,050</b>	<b>500</b>
<b>ΓΓΓΓΓΓΓΓΓΓ ΓΓΓΓΓΓ Total Justice</b>		<b>2,900</b>	<b>15,600</b>	<b>10,600</b>	<b>3,450</b>	<b>900</b>

ᐃᓕᓴᓂᐸᓯᓕᓂᓴᓂᓴᓂᓴ  
 CULTURE, LANGUAGE, ELDERS AND YOUTH

ᓕᓕᓕᓂᓴ ᐸᓯᓴᓂᓴ ᐸᓯᓴᓂᓴᓂᓴ ᐸᓯᓴᓂᓴᓂᓴ	ᐸᓯᓴᓂᓴᓂᓴᓂᓴᓂᓴ					
	ᐸᓯᓴᓂᓴᓂᓴᓂᓴ 2007/08 Revised Budget	ᐸᓯᓴᓂᓴᓂᓴᓂᓴ 2008/09 Budget	ᐸᓯᓴᓂᓴᓂᓴᓂᓴ 2009/10 Planned	ᐸᓯᓴᓂᓴᓂᓴᓂᓴ 2010/11 Planned	ᐸᓯᓴᓂᓴᓂᓴᓂᓴ 2011/12 Planned	ᐸᓯᓴᓂᓴᓂᓴᓂᓴ 2012/13 Planned
ᓂᓴᓂᓴᓂᓴᓂᓴᓂᓴ <b>Qikiqtaaluk Region</b>						
ᓂᓴᓂᓴᓂᓴᓂᓴᓂᓴ <b>Clyde River</b>						
ᐃᓕᓴᓂᓴᓂᓴᓂᓴᓂᓴ - ᐱᓴᓂᐸᓯᓕᓂᓴᓂᓴ Folk School - Piqusilirivvik	5,786	850	6,100	4,133	50	-
ᓂᓴᓂᓴᓂᓴᓂᓴᓂᓴ <b>Nunavut-Various</b>						
ᓂᓴᓂᓴᓂᓴᓂᓴᓂᓴᓂᓴ (\$300,000 ᓂᓴᓂᓴᓂᓴᓂᓴᓂᓴᓂᓴ)	60	60	60	60	60	60
ᓂᓴᓂᓴᓂᓴᓂᓴᓂᓴᓂᓴ <b>Total Qikiqtaaluk Region</b>		<b>910</b>	<b>6,160</b>	<b>4,193</b>	<b>110</b>	<b>60</b>
ᐃᓕᓴᓂᐸᓯᓕᓂᓴᓂᓴᓂᓴᓂᓴ <b>Total Culture, Language, Elders and Youth</b>		<b>910</b>	<b>6,160</b>	<b>4,193</b>	<b>110</b>	<b>60</b>



ᐃᓕᓂᐸᓯᓕᓂᓴᓂᓴᐸᓯᓕ  
 EDUCATION

ᓕᓕᓕᓂᐸᓯᓕ ᐸᓯᓴᓂᓴᐸᓯᓕ ᐸᓯᓴᓂᓴᐸᓯᓕ Five (5) Year Capital Plan	ᐸᓯᓴᓂᓴᐸᓯᓕ					
	ᐸᓯᓴᓂᓴᐸᓯᓕ 2007/08 Revised Budget	ᐸᓯᓴᓂᓴᐸᓯᓕ 2008/09 Budget	ᐸᓯᓴᓂᓴᐸᓯᓕ 2009/10 Planned	ᐸᓯᓴᓂᓴᐸᓯᓕ 2010/11 Planned	ᐸᓯᓴᓂᓴᐸᓯᓕ 2011/12 Planned	ᐸᓯᓴᓂᓴᐸᓯᓕ 2012/13 Planned
<b>ᓴᓂᓴᓂᓴᐸᓯᓕ Sanikiluaq</b>						
ᓂᓕᓂᓴ ᐃᓕᓂᐸᓯᓕᐸᓯᓕ New School	1,956	200	8,900	5,100	50	-
<b>ᓂᓂᓴᓂᓴᐸᓯᓕ ᓯᓴᓴᓂᓴᐸᓯᓕ Total Qikiqtaaluk Region</b>		<b>16,200</b>	<b>37,700</b>	<b>11,500</b>	<b>250</b>	<b>-</b>
<b>ᓯᓴᓴᓂᓴᐸᓯᓕ Kivalliq Region</b>						
<b>ᓴᓕᓂᓴ Coral Harbour</b>						
ᓂᓕᓂᓴ ᐃᓕᓂᐸᓯᓕᐸᓯᓕ New School	-	-	-	850	11,100	7,100
ᓴᓂᓴ ᐃᓕᓂᐸᓯᓕᐸᓯᓕ ᓴᓂᓴᓂᓴᐸᓯᓕ Sakku School Renovations	2,588	50	-	-	-	-
<b>ᓂᓴᓴᓂᓴᐸᓯᓕ Rankin Inlet</b>						
ᓯᓴᓴᓂᓴᐸᓯᓕ ᐃᓕᓂᐸᓯᓕᐸᓯᓕ ᐃᓕᓂᓴᓂᓴ NAC Student Accommodation	4,830	3,900	550	-	-	-
ᓴᓂᓴᓂᓴᐸᓯᓕ ᐃᓕᓂᐸᓯᓕᐸᓯᓕ Trade School	1,922	3,250	3,100	50	-	-
<b>ᓂᓂᓴᓂᓴᐸᓯᓕ ᓯᓴᓴᓂᓴᐸᓯᓕ Total Kivalliq Region</b>		<b>7,200</b>	<b>3,650</b>	<b>900</b>	<b>11,100</b>	<b>7,100</b>
<b>ᓯᓴᓴᓂᓴᐸᓯᓕ Kitikmeot Region</b>						
<b>ᐸᓴᓴᓂᓴᐸᓯᓕ Gjoa Haven</b>						
ᓯᓴᓴᓂᓴᐸᓯᓕ ᐃᓕᓂᐸᓯᓕᐸᓯᓕ ᓴᓂᓴᓂᓴᐸᓯᓕ ᐱᓕᓂᓴᐸᓯᓕ Elementary School Renovation with Gym	12,344	1,500	8,850	9,300	50	-
<b>ᓂᓂᓴᓂᓴᐸᓯᓕ ᓯᓴᓴᓂᓴᐸᓯᓕ Total Kitikmeot Region</b>		<b>1,500</b>	<b>8,850</b>	<b>9,300</b>	<b>50</b>	<b>-</b>
<b>ᐃᓕᓂᐸᓯᓕᓂᓴᓂᓴᐸᓯᓕ ᓂᓂᓴᓂᓴᐸᓯᓕ Total Education</b>		<b>25,585</b>	<b>50,885</b>	<b>22,385</b>	<b>12,085</b>	<b>8,285</b>

ᐱᓐᓂᐱᓐᓂᓐ ᐱᓕᓂᐱᓐᓂᓐ ᐱᓕᓂᐱᓐᓂᓐ  
HEALTH AND SOCIAL SERVICES

ᐱᓐᓂᐱᓐᓂᓐ ᐱᓕᓂᐱᓐᓂᓐ ᐱᓕᓂᐱᓐᓂᓐ Five (5) Year Capital Plan	ᐱᓐᓂᐱᓐᓂᓐ					
	ᐱᓐᓂᐱᓐᓂᓐ 2007/08 Revised Budget	ᐱᓐᓂᐱᓐᓂᓐ 2008/09 Budget	ᐱᓐᓂᐱᓐᓂᓐ 2009/10 Planned	ᐱᓐᓂᐱᓐᓂᓐ 2010/11 Planned	ᐱᓐᓂᐱᓐᓂᓐ 2011/12 Planned	ᐱᓐᓂᐱᓐᓂᓐ 2012/13 Planned
<b>ᐱᓐᓂᐱᓐᓂᓐ ᐱᓕᓂᐱᓐᓂᓐ</b> <i>Headquarters Region</i>						
<b>ᐱᓐᓂᐱᓐᓂᓐ - ᐱᓐᓂᐱᓐᓂᓐ</b> <i>Nunavut - Various</i>						
ᐱᓐᓂᐱᓐᓂᓐ ᐱᓕᓂᐱᓐᓂᓐ Minor Projects	500	500	500	500	500	500
ᐱᓐᓂᐱᓐᓂᓐ ᐱᓕᓂᐱᓐᓂᓐ (\$300,000 ᐅᓐᓂᐱᓐᓂᓐ ᐱᓐᓂᐱᓐᓂᓐ) Small Capital (\$300,000 or less)	500	500	500	500	500	500
<b>ᐱᓐᓂᐱᓐᓂᓐ ᐱᓐᓂᐱᓐᓂᓐ</b> <i>Total Headquarters</i>	<b>1,000</b>	<b>1,000</b>	<b>1,000</b>	<b>1,000</b>	<b>1,000</b>	<b>1,000</b>
<b>ᐱᓐᓂᐱᓐᓂᓐ ᐱᓕᓂᐱᓐᓂᓐ</b> <i>Qikiqtaaluk Region</i>						
<b>ᐱᓐᓂᐱᓐᓂᓐ ᐱᓕᓂᐱᓐᓂᓐ</b> <i>Iglolik</i>						
ᐱᓐᓂᐱᓐᓂᓐ ᐱᓕᓂᐱᓐᓂᓐ ᐱᓐᓂᐱᓐᓂᓐ Continuing Care Centre	5,542	4,135	-	-	-	-
<b>ᐱᓐᓂᐱᓐᓂᓐ ᐱᓕᓂᐱᓐᓂᓐ</b> <i>Iqaluit</i>						
ᐱᓐᓂᐱᓐᓂᓐ ᐱᓐᓂᐱᓐᓂᓐ ᐱᓐᓂᐱᓐᓂᓐ Qikiqtani General Hospital	23,176	4,511	400	50	-	-
<b>ᐱᓐᓂᐱᓐᓂᓐ ᐱᓐᓂᐱᓐᓂᓐ</b> <i>Total Qikiqtaaluk Region</i>	<b>8,646</b>	<b>400</b>	<b>50</b>	<b>-</b>	<b>-</b>	<b>-</b>
<b>ᐱᓐᓂᐱᓐᓂᓐ ᐱᓕᓂᐱᓐᓂᓐ</b> <i>Kivalliq Region</i>						
<b>ᐱᓐᓂᐱᓐᓂᓐ ᐱᓕᓂᐱᓐᓂᓐ</b> <i>Repulse Bay</i>						
ᐱᓐᓂᐱᓐᓂᓐ ᐱᓐᓂᐱᓐᓂᓐ ᐱᓐᓂᐱᓐᓂᓐ Replace Health Centre	147	-	200	7,500	5,000	50
<b>ᐱᓐᓂᐱᓐᓂᓐ ᐱᓐᓂᐱᓐᓂᓐ</b> <i>Total Kivalliq Region</i>	<b>-</b>	<b>200</b>	<b>7,500</b>	<b>5,000</b>	<b>50</b>	<b>-</b>
<b>ᐱᓐᓂᐱᓐᓂᓐ ᐱᓕᓂᐱᓐᓂᓐ</b> <i>Kitikmeot Region</i>						
<b>ᐱᓐᓂᐱᓐᓂᓐ ᐱᓕᓂᐱᓐᓂᓐ</b> <i>Cambridge Bay</i>						
ᐱᓐᓂᐱᓐᓂᓐ ᐱᓐᓂᐱᓐᓂᓐ ᐱᓐᓂᐱᓐᓂᓐ ᐱᓐᓂᐱᓐᓂᓐ ᐱᓐᓂᐱᓐᓂᓐ ᐱᓐᓂᐱᓐᓂᓐ Kitikmeot Medical Boarding Home	-	-	-	26	2,100	9

ᐱᓕᓂᐳᓱᓕ ᐱᓕᓂᐳᓱᓕ ᐃᓂᓕᓂᐳᓱᓕ  
HEALTH AND SOCIAL SERVICES

ᓕᓕᓕᓂᓕ ᐱᓕᓂᐳᓱᓕ ᐱᓕᓂᐳᓱᓕ ᐱᓕᓂᐳᓱᓕ Five (5) Year Capital Plan	ᐱᓕᓂᐳᓱᓕ ᐱᓕᓂᐳᓱᓕ					
	ᐱᓕᓂᐳᓱᓕ 2007/08 Revised Budget	ᐱᓕᓂᐳᓱᓕ 2008/09 Budget	ᐱᓕᓂᐳᓱᓕ 2009/10 Planned	ᐱᓕᓂᐳᓱᓕ 2010/11 Planned	ᐱᓕᓂᐳᓱᓕ 2011/12 Planned	ᐱᓕᓂᐳᓱᓕ 2012/13 Planned
<b>ᐃᓂᓕᓂᐳᓱᓕ Gjoa Haven</b>						
ᐃᓂᓕᓂᐳᓱᓕ ᐱᓕᓂᐳᓱᓕ ᐃᓂᓕᓂᐳᓱᓕ Continuing Care Centre	5,527	4,527	50	-	-	-
<b>ᓕᓂᓕᓂᐳᓱᓕ Taloyoak</b>						
ᐱᓕᓂᐳᓱᓕ ᐱᓕᓂᐳᓱᓕ ᐱᓕᓂᐳᓱᓕ Replace Health Centre	820	200	7,500	5,000	50	-
<b>ᐃᓂᓕᓂᐳᓱᓕ ᐱᓕᓂᐳᓱᓕ Total Kitikmeot Region</b>		<b>4,727</b>	<b>7,550</b>	<b>5,026</b>	<b>2,150</b>	<b>9</b>
<b>ᐱᓕᓂᐳᓱᓕ ᐱᓕᓂᐳᓱᓕ ᐱᓕᓂᐳᓱᓕ ᐱᓕᓂᐳᓱᓕ Total Health &amp; Social Services</b>		<b>14,373</b>	<b>9,150</b>	<b>13,576</b>	<b>8,150</b>	<b>1,059</b>





ᓄᓕᓂᓂ ᓂᓴᓴᓂᓂᓂᓂ ᐱᓯᓕᓴᓯᓂᓴᓂᓴ

COMMUNITY AND GOVERNMENT SERVICES

ᓕᓕᓕᓂᓂᓂ ᐱᓕᓂᐱᓯᓕ ᐱᓕᓂᐱᓯᓂᓴ ᐱᓕᓂᐱᓯᓂᓴ	ᐱᓕᓂᐱᓯᓂᓴ					
	ᐱᓕᓂᐱᓯᓂᓴ 2007/08 Revised Budget	ᐱᓕᓂᐱᓯᓂᓴ 2008/09 Budget	ᐱᓕᓂᐱᓯᓂᓴ 2009/10 Planned	ᐱᓕᓂᐱᓯᓂᓴ 2010/11 Planned	ᐱᓕᓂᐱᓯᓂᓴ 2011/12 Planned	ᐱᓕᓂᐱᓯᓂᓴ 2012/13 Planned
<b>ᐱᓕᓂᐱᓯᓂᓴ ᐱᓕᓂᐱᓯᓂᓴ</b> <b>Headquarters Region</b>						
ᓄᓕᓂᓂ - ᓄᓂᓂᓂᓂᓂ Nunavut - Various						
ᓂᓴᓂᓂ ᐱᓕᓂᐱᓯᓂᓴ (\$300,000 ᓂᓴᓂᓂᓂᓂ ᓂᓴᓂᓂ) Small Capital (\$300,000 or less)	3,895	3,895	3,895	3,895	3,895	3,895
<b>ᓂᓴᓂᓂ ᐱᓕᓂᐱᓯᓂᓴ</b> <b>Total Headquarters</b>	<b>3,895</b>	<b>3,895</b>	<b>3,895</b>	<b>3,895</b>	<b>3,895</b>	<b>3,895</b>
<b>ᓴᓂᓂᓂᓂᓂᓂ</b> <b>Qikiqtaaluk Region</b>						
<b>ᐃᓂᐱᐱᓕᓂᓂ</b> <b>Arctic Bay</b>						
ᓄᓕᓂᓂ ᐱᓕᓂᐱᓯᓂᓴ Community Hall	200	2,350	-	-	-	-
<b>ᐱᓕᓂᐱᓯᓂᓴ</b> <b>Grise Fiord</b>						
ᓴᓂᓂᓂᓂ ᓄᓕᓂᓂᓂ ᐱᓕᓂᐱᓯᓂᓴ ᐱᓕᓂᐱᓯᓂᓴ Qaqqivik Community Centre Expansion	-	100	650	-	-	-
<b>ᓴᓂᓂᓂᓂ</b> <b>Hall Beach</b>						
ᓄᓕᓂᓂ ᐱᓕᓂᐱᓯᓂᓴ ᐱᓕᓂᐱᓯᓂᓴ ᐱᓕᓂᐱᓯᓂᓴ Community Hall Expansion	-	100	900	-	-	-
<b>ᐃᓂᓂᓂ</b> <b>Igloolik</b>						
ᓂᓴᓂᓂᓂᓂ ᓄᓕᓂᓂ ᐱᓕᓂᐱᓯᓂᓴ Replacement of Community Hall	-	150	2,400	-	-	-
<b>ᐃᓴᓂᓂᓂ</b> <b>Iqaluit</b>						
ᐱᓕᓂᐱᓯᓂᓴ ᓂᓴᓂᓂᓂ ᐱᓕᓂᐱᓯᓂᓴ Capital Contribution Agreement	6,088	2,400	2,400	2,400	2,400	2,400
<b>ᐱᓕᓂᐱᓯᓂᓴ</b> <b>Pangnirtung</b>						
ᓂᓴᓂᓂᓂ ᓂᓴᓂᓂ ᐱᓕᓂᐱᓯᓂᓴ ᐱᓕᓂᐱᓯᓂᓴ Duval River Bridge	245	350	-	-	-	-
<b>ᓴᓂᓂᓂᓂᓂᓂ</b> <b>Resolute Bay</b>						
ᓂᓴᓂᓂᓂᓂᓂᓂ ᓂᓴᓂᓂᓂ ᐱᓕᓂᐱᓯᓂᓴ ᐱᓕᓂᐱᓯᓂᓴ Tank Farm Capacities and Code Compliance	1,809	2,260	2,000	-	-	-



ᄁᄁᄁᄁᄁ ᄁᄁᄁᄁᄁᄁ ᄁᄁᄁᄁᄁᄁᄁᄁᄁ  
 COMMUNITY AND GOVERNMENT SERVICES

ᄁᄁᄁᄁᄁ ᄁᄁᄁᄁᄁᄁ ᄁᄁᄁᄁᄁᄁᄁᄁ Five (5) Year Capital Plan	ᄁᄁᄁᄁᄁᄁᄁᄁᄁ					
	ᄁᄁᄁᄁᄁᄁᄁ 2007/08 Revised Budget	ᄁᄁᄁᄁᄁᄁᄁᄁ 2008/09 Budget	ᄁᄁᄁᄁᄁᄁᄁᄁ 2009/10 Planned	ᄁᄁᄁᄁᄁᄁᄁᄁ 2010/11 Planned	ᄁᄁᄁᄁᄁᄁᄁᄁ 2011/12 Planned	ᄁᄁᄁᄁᄁᄁᄁᄁ 2012/13 Planned
<b>ᄁᄁᄁᄁᄁ Kugaaruk</b>						
ᄁᄁᄁᄁᄁᄁᄁ Sewage Lagoon	984	500	70	-	-	-
<b>ᄁᄁᄁᄁᄁᄁᄁ Kugluktuk</b>						
ᄁᄁᄁᄁᄁᄁᄁᄁᄁᄁᄁᄁ Sewage Lagoon and Solid Waste	1,746	2,500	32	-	-	-
ᄁᄁᄁᄁᄁᄁᄁ Water Treatment Plant	379	450	-	-	-	-
ᄁᄁᄁᄁᄁᄁᄁᄁ ᄁᄁᄁᄁᄁᄁ ᄁᄁᄁᄁᄁᄁ Hamlet Office Building	391	1,700	1,000	-	-	-
<b>ᄁᄁᄁᄁᄁ Taloyoak</b>						
ᄁᄁᄁᄁᄁᄁᄁᄁᄁᄁᄁᄁ ᄁᄁᄁᄁᄁᄁ ᄁᄁᄁᄁᄁᄁᄁᄁ Renovation to Community Hall	-	-	175	-	-	-
<b>ᄁᄁᄁᄁᄁᄁᄁᄁᄁ Total Kitikmeot Region</b>		<b>6,500</b>	<b>1,277</b>	-	-	-
<b>ᄁᄁᄁᄁᄁᄁᄁᄁᄁᄁᄁᄁ ᄁᄁᄁᄁᄁᄁᄁᄁᄁᄁᄁᄁᄁᄁᄁᄁ Total Community and Government Services</b>		<b>23,107</b>	<b>26,972</b>	<b>12,995</b>	<b>7,795</b>	<b>6,295</b>

ᐱᓕᓕᐱᓕᓂᓴᓂᐅᓕ ᐃᓯᓕᓴᓂᓴᓂᐅᓕ  
ECONOMIC DEVELOPMENT AND TRANSPORTATION

ᓕᓕᓕᓂᐅᓕ ᐱᓕᓴᓂᐅᓕ ᐱᓯᐅᓴᓂᐅᓕ ᓕᓕᓂᓴᓂ Five (5) Year Capital Plan	ᐱᓕᓯᓯᓕᓴᓂᓴᓂ					
	ᐱᓯᐅᓴᓂᐅᓕ 2007/08 Revised Budget	ᐱᓯᐅᓴᓂᐅᓕ 2008/09 Budget	ᓕᓕᓂᓴᓂᐅᓕ 2009/10 Planned	ᓕᓕᓂᓴᓂᐅᓕ 2010/11 Planned	ᓕᓕᓂᓴᓂᐅᓕ 2011/12 Planned	ᓕᓕᓂᓴᓂᐅᓕ 2012/13 Planned
<b>ᐱᓕᓂᓴᓂᐅᓕᓴᓂᓴᓂᓴᓂ Headquarters Region</b>						
<b>ᓂᓂᓯᓕ - ᓂᓂᓯᐅᓴᓂᓴᓂ Nunavut - Various</b>						
ᐱᓕᓂᓴᓂᐅᓕ Access Roads	500	500	500	1,000	1,000	1,000
ᐅᓯᐱᓕ ᓯᓯᓕᓴᓂᐅᓕᓴᓂ ᐅᓕᓕᓴᓂᓴᓂᓴᓂᓴᓂ ᓂᓂᓯᓕ ᐃᓂᓴᓂᓴᓂᓴᓂ Small Craft Harbour Contribution	1,000	1,000	1,000	1,000	1,000	1,000
ᓯᓯᓕᓴᓂ ᐱᓯᐅᓴᓂᐅᓕ (\$300,000 ᐅᓕᓂᓴᓂᓴᓂ ᐅᓴᓂᓴᓂ) Small Capital (\$300,000 or less)	1,200	1,200	2,500	2,500	2,500	2,500
<b>ᓂᓂᓯᓕᓴᓂᓴᓂᓴᓂᓴᓂᓴᓂ Total Headquarters</b>		<b>2,700</b>	<b>4,000</b>	<b>4,500</b>	<b>4,500</b>	<b>4,500</b>
<b>ᓯᓯᓕᓴᓂᓴᓂᓴᓂᓴᓂ Qikiqtaaluk Region</b>						
<b>ᐃᓂᐱᓕᓴᓂᓴᓂ/ᓂᓂᓯᓕᓴᓂ Arctic Bay/Nanisivik</b>						
ᓴᓂᓴᓂᓴᓂᓴᓂᓴᓂᓴᓂ ᓴᓂᓴᓂᓴᓂᓴᓂᓴᓂ Airport Redevelopment	8,400	6,400	100	-	-	-
ᐱᓕᓂᓴᓂᐅᓕ ᓴᓂᓴᓂᓴᓂᓴᓂᓴᓂ Highway Upgrades	200	70	83	-	-	-
<b>ᓯᓯᓕᓴᓂᓴᓂᓴᓂᓴᓂ Kimmirut</b>						
ᓴᓂᓴᓂᓴᓂᓴᓂᓴᓂ ᓯᓯᓕᓴᓂᓴᓂᓴᓂᓴᓂ Rehab Runway/Apron	740	300	-	-	-	-
<b>ᓂᓂᓯᓕᓴᓂᓴᓂᓴᓂᓴᓂᓴᓂ Total Qikiqtaaluk Region</b>		<b>6,770</b>	<b>183</b>	<b>-</b>	<b>-</b>	<b>-</b>
<b>ᐱᓕᓕᐱᓕᓂᓴᓂᐅᓕ ᐃᓯᓕᓴᓂᓴᓂᐅᓕᓴᓂ ᓂᓂᓯᓕᓴᓂᓴᓂᓴᓂ</b> <b>Total Economic Development and Transportation</b>		<b>9,470</b>	<b>4,183</b>	<b>4,500</b>	<b>4,500</b>	<b>4,500</b>













ᓄᓇᓂᓕᓕ ᐃᓕᓕᓕᓕᓕᓕᓕᓕᓕ  
NUNAVUT HOUSING CORPORATION

ᓕᓕᓕᓕᓕ ᐃᓕᓕᓕᓕᓕ ᐃᓕᓕᓕᓕᓕ ᐃᓕᓕᓕᓕᓕ Five (5) Year Capital Plan	ᐃᓕᓕᓕᓕᓕᓕᓕ					
	ᐃᓕᓕᓕᓕᓕ 2007/08 Revised Budget	ᐃᓕᓕᓕᓕᓕ 2008/09 Budget	ᐃᓕᓕᓕᓕᓕ 2009/10 Planned	ᐃᓕᓕᓕᓕᓕ 2010/11 Planned	ᐃᓕᓕᓕᓕᓕ 2011/12 Planned	ᐃᓕᓕᓕᓕᓕ 2012/13 Planned
<b>ᓕᓕᓕᓕᓕᓕ Kitikmeot Region</b>						
<b>ᐃᓕᓕᓕᓕᓕᓕ Cambridge Bay</b>						
ᐃᓕᓕᓕᓕᓕᓕ/ᓕᓕᓕᓕᓕᓕᓕᓕᓕ - ᓄᓇᓂᓕ ᓕᓕᓕᓕᓕ M & I / Retrofit - GN funds	420	413	351	337	337	337
ᓕᓕᓕᓕᓕᓕᓕ ᐃᓕᓕᓕᓕᓕᓕᓕᓕᓕᓕᓕ / ᓕᓕᓕᓕᓕᓕᓕᓕᓕ - ᓕᓕᓕᓕᓕ ᐃᓕᓕᓕᓕᓕᓕᓕᓕᓕᓕᓕ ᓕᓕᓕᓕᓕᓕᓕᓕᓕᓕ (ᓕᓕᓕᓕᓕ ᓕᓕᓕᓕᓕᓕᓕᓕᓕᓕ) M & I / Retrofit - CMHC funded (not in total)	219	218	214	211	228	228
<b>ᓕᓕᓕᓕᓕᓕ Gjoa Haven</b>						
ᐃᓕᓕᓕᓕᓕᓕ/ᓕᓕᓕᓕᓕᓕᓕᓕᓕ - ᓄᓇᓂᓕ ᓕᓕᓕᓕᓕ M & I / Retrofit - GN funds	321	336	282	270	270	270
ᓕᓕᓕᓕᓕᓕᓕ ᐃᓕᓕᓕᓕᓕᓕᓕᓕᓕᓕᓕ / ᓕᓕᓕᓕᓕᓕᓕᓕᓕ - ᓕᓕᓕᓕᓕ ᐃᓕᓕᓕᓕᓕᓕᓕᓕᓕᓕᓕ ᓕᓕᓕᓕᓕᓕᓕᓕᓕᓕ (ᓕᓕᓕᓕᓕ ᓕᓕᓕᓕᓕᓕᓕᓕᓕᓕ) M & I / Retrofit - CMHC funded (not in total)	172	168	171	169	182	182
<b>ᓕᓕᓕᓕᓕ Kugaaruk</b>						
ᐃᓕᓕᓕᓕᓕᓕ/ᓕᓕᓕᓕᓕᓕᓕᓕᓕ - ᓄᓇᓂᓕ ᓕᓕᓕᓕᓕ M & I / Retrofit - GN funds	197	175	141	135	135	135
ᓕᓕᓕᓕᓕᓕᓕ ᐃᓕᓕᓕᓕᓕᓕᓕᓕᓕᓕᓕ / ᓕᓕᓕᓕᓕᓕᓕᓕᓕ - ᓕᓕᓕᓕᓕ ᐃᓕᓕᓕᓕᓕᓕᓕᓕᓕᓕᓕ ᓕᓕᓕᓕᓕᓕᓕᓕᓕᓕ (ᓕᓕᓕᓕᓕ ᓕᓕᓕᓕᓕᓕᓕᓕᓕᓕ) M & I / Retrofit - CMHC funded (not in total)	111	104	86	85	91	91
<b>ᓕᓕᓕᓕᓕᓕ Kugluktuk</b>						
ᐃᓕᓕᓕᓕᓕᓕ/ᓕᓕᓕᓕᓕᓕᓕᓕᓕ - ᓄᓇᓂᓕ ᓕᓕᓕᓕᓕ M & I / Retrofit - GN funds	444	452	393	377	377	377
ᓕᓕᓕᓕᓕᓕᓕ ᐃᓕᓕᓕᓕᓕᓕᓕᓕᓕᓕᓕ / ᓕᓕᓕᓕᓕᓕᓕᓕᓕ - ᓕᓕᓕᓕᓕ ᐃᓕᓕᓕᓕᓕᓕᓕᓕᓕᓕᓕ ᓕᓕᓕᓕᓕᓕᓕᓕᓕᓕ (ᓕᓕᓕᓕᓕ ᓕᓕᓕᓕᓕᓕᓕᓕᓕᓕ) M & I / Retrofit - CMHC funded (not in total)	212	224	240	236	255	255
<b>ᓕᓕᓕᓕᓕ Taloyoak</b>						
ᐃᓕᓕᓕᓕᓕᓕ/ᓕᓕᓕᓕᓕᓕᓕᓕᓕ - ᓄᓇᓂᓕ ᓕᓕᓕᓕᓕ M & I / Retrofit - GN funds	273	264	533	85	85	85













ᄡᄢᄣᄤᄥᄦ ᄡᄢᄣᄤᄥᄦ ᄡᄢᄣᄤᄥᄦ ᄡᄢᄣᄤᄥᄦ ᄡᄢᄣᄤᄥᄦ ᄡᄢᄣᄤᄥᄦ ᄡᄢᄣᄤᄥᄦ ᄡᄢᄣᄤᄥᄦ /  
 ᄡᄢᄣᄤᄥᄦ ᄡᄢᄣᄤᄥᄦ ᄡᄢᄣᄤᄥᄦ ᄡᄢᄣᄤᄥᄦ ᄡᄢᄣᄤᄥᄦ ᄡᄢᄣᄤᄥᄦ ᄡᄢᄣᄤᄥᄦ ᄡᄢᄣᄤᄥᄦ /  
 NUNAVUT COMMUNITY INFRASTRUCTURE ADVISORY COMMITTEE /  
 COMMUNITY AND GOVERNMENT SERVICES CAPITAL PROJECTS

5-ᄡᄢᄣᄤᄥᄦ ᄡᄢᄣᄤᄥᄦ ᄡᄢᄣᄤᄥᄦ ᄡᄢᄣᄤᄥᄦ		ᄡᄢᄣᄤᄥᄦ ᄡᄢᄣᄤᄥᄦ ᄡᄢᄣᄤᄥᄦ 2007/08 Revised	ᄡᄢᄣᄤᄥᄦ 2008/09 Planned	ᄡᄢᄣᄤᄥᄦ 2009/10 Planned	ᄡᄢᄣᄤᄥᄦ 2010/11 Planned	ᄡᄢᄣᄤᄥᄦ 2011/12 Planned	ᄡᄢᄣᄤᄥᄦ 2012/13 Planned
<b>ᄡᄢᄣᄤᄥᄦ</b>	<b>Qikiqtaaluk Region</b>						
<b>ᄡᄢᄣᄤᄥᄦ</b>	<b>Arctic Bay</b>						
	ᄡᄢᄣᄤᄥᄦ Sewage Lagoon	-	250	2,250	-	-	-
<b>ᄡᄢᄣᄤᄥᄦ</b>	<b>Clyde River</b>						
	ᄡᄢᄣᄤᄥᄦ ᄡᄢᄣᄤᄥᄦ New Sewage Lagoon	1,500	750	-	-	-	-
	ᄡᄢᄣᄤᄥᄦ ᄡᄢᄣᄤᄥᄦ ᄡᄢᄣᄤᄥᄦ ᄡᄢᄣᄤᄥᄦ Solid Waste Improvement	-	-	200	1,300	-	-
<b>ᄡᄢᄣᄤᄥᄦ</b>	<b>Grise Fiord</b>						
	ᄡᄢᄣᄤᄥᄦ ᄡᄢᄣᄤᄥᄦ ᄡᄢᄣᄤᄥᄦ ᄡᄢᄣᄤᄥᄦ Solid Waste Improvement	-	-	200	1,300	-	-
<b>ᄡᄢᄣᄤᄥᄦ</b>	<b>Igloolik</b>						
	ᄡᄢᄣᄤᄥᄦ/ᄡᄢᄣᄤᄥᄦ ᄡᄢᄣᄤᄥᄦ Sewage / Solid Waste	-	50	450	-	-	-
<b>ᄡᄢᄣᄤᄥᄦ</b>	<b>Iqaluit</b>						
	ᄡᄢᄣᄤᄥᄦ ᄡᄢᄣᄤᄥᄦ ᄡᄢᄣᄤᄥᄦ Gas Tax Contribution	900	1,125	2,250	-	-	-
<b>ᄡᄢᄣᄤᄥᄦ</b>	<b>Kimmitut</b>						
	ᄡᄢᄣᄤᄥᄦ ᄡᄢᄣᄤᄥᄦ ᄡᄢᄣᄤᄥᄦ ᄡᄢᄣᄤᄥᄦ ᄡᄢᄣᄤᄥᄦ Reclamation of Abandoned Lagoon and Solid Waste Sites	-	100	900	-	-	-
<b>ᄡᄢᄣᄤᄥᄦ</b>	<b>Pangnirtung</b>						
	ᄡᄢᄣᄤᄥᄦ ᄡᄢᄣᄤᄥᄦ ᄡᄢᄣᄤᄥᄦ ᄡᄢᄣᄤᄥᄦ Water Reservoir Expansion	-	300	1,200	-	-	-
<b>ᄡᄢᄣᄤᄥᄦ</b>	<b>Qikiqtarjuaq</b>						
	ᄡᄢᄣᄤᄥᄦ ᄡᄢᄣᄤᄥᄦ ᄡᄢᄣᄤᄥᄦ Municipal Services	-	500	-	-	-	-

ᄡᄡᄡᄡ ᄡᄡᄡᄡ ᄡᄡᄡᄡᄡᄡᄡ ᄡᄡᄡᄡᄡᄡᄡᄡ ᄡᄡᄡᄡᄡᄡᄡᄡ / ᄡᄡᄡᄡᄡ ᄡᄡᄡᄡᄡᄡᄡ ᄡᄡᄡᄡᄡᄡᄡᄡ ᄡᄡᄡᄡᄡᄡᄡᄡ ᄡᄡᄡᄡᄡᄡᄡᄡ

NUNAVUT COMMUNITY INFRASTRUCTURE ADVISORY COMMITTEE / COMMUNITY AND GOVERNMENT SERVICES CAPITAL PROJECTS

5-ᄡᄡᄡᄡ ᄡᄡᄡᄡ ᄡᄡᄡᄡᄡᄡᄡ ᄡᄡᄡᄡᄡᄡᄡ	ᄡᄡᄡᄡᄡᄡᄡᄡᄡᄡᄡ ᄡᄡᄡᄡᄡᄡᄡ 2007/08 Revised	ᄡᄡᄡᄡᄡᄡᄡᄡᄡᄡ 2008/09 Planned	ᄡᄡᄡᄡᄡᄡᄡᄡᄡᄡ 2009/10 Planned	ᄡᄡᄡᄡᄡᄡᄡᄡᄡᄡ 2010/11 Planned	ᄡᄡᄡᄡᄡᄡᄡᄡᄡᄡ 2011/12 Planned	ᄡᄡᄡᄡᄡᄡᄡᄡᄡᄡ 2012/13 Planned
<b>ᄡᄡᄡᄡᄡᄡᄡᄡ Resolute Bay</b>						
ᄡᄡᄡᄡᄡᄡᄡᄡᄡᄡᄡᄡᄡᄡ ᄡᄡᄡᄡᄡᄡᄡᄡᄡᄡᄡᄡ	-	100	900	-	-	-
Landfill-Bulky Metals						
ᄡᄡᄡᄡ ᄡᄡᄡᄡᄡᄡᄡᄡ	-	100	750	-	-	-
Landfill Site						
<b>ᄡᄡᄡᄡᄡᄡᄡ ᄡᄡᄡᄡᄡᄡᄡ Total Qikiqtaaluk Region</b>		<b>3,275</b>	<b>9,100</b>	<b>2,600</b>	-	-
<b>ᄡᄡᄡᄡᄡᄡᄡ Kivalliq Region</b>						
<b>ᄡᄡᄡᄡᄡᄡ Arviat</b>						
ᄡᄡᄡᄡᄡᄡᄡ ᄡᄡᄡᄡᄡᄡᄡᄡᄡᄡᄡᄡ	100	900	-	-	-	-
Water Supply Filtration						
ᄡᄡᄡᄡᄡᄡᄡᄡᄡᄡᄡᄡᄡᄡ ᄡᄡᄡᄡᄡᄡᄡᄡᄡᄡᄡᄡ	-	100	900	-	-	-
Landfill-Bulky Metal Clean Up						
ᄡᄡᄡᄡᄡᄡᄡᄡᄡᄡᄡᄡᄡᄡ ᄡᄡᄡᄡᄡᄡᄡᄡᄡᄡᄡᄡᄡ	-	-	200	1,300	-	-
Solid Waste Improvement						
<b>ᄡᄡᄡᄡᄡᄡᄡ Chesterfield Inlet</b>						
ᄡᄡᄡᄡᄡᄡᄡᄡᄡᄡᄡᄡᄡᄡ ᄡᄡᄡᄡᄡᄡᄡᄡᄡᄡᄡᄡᄡ	150	850	-	-	-	-
Reservoir Pump House						
ᄡᄡᄡᄡᄡᄡᄡᄡᄡᄡᄡᄡᄡᄡ	-	150	850	-	-	-
Sewage Lagoon						
<b>ᄡᄡᄡᄡᄡᄡᄡᄡ Rankin Inlet</b>						
ᄡᄡᄡᄡᄡᄡᄡᄡᄡᄡᄡᄡᄡᄡ ᄡᄡᄡᄡᄡᄡᄡᄡᄡᄡᄡᄡᄡᄡ	-	100	700	-	-	-
Abandon Old Solid Waste Site						
<b>ᄡᄡᄡᄡᄡᄡᄡ Repulse Bay</b>						
ᄡᄡᄡᄡᄡᄡᄡᄡᄡᄡᄡᄡᄡᄡᄡᄡᄡᄡᄡᄡᄡᄡᄡᄡᄡ	-	50	450	-	-	-
Dumps						
<b>ᄡᄡᄡᄡᄡᄡᄡᄡ ᄡᄡᄡᄡᄡᄡᄡᄡᄡ Total Kivalliq Region</b>		<b>2,150</b>	<b>3,100</b>	<b>1,300</b>	-	-



ᄆᄆᄆᄆ ᄆᄆᄆᄆ ᄆᄆᄆᄆᄆᄆᄆ ᄆᄆᄆᄆᄆᄆᄆᄆᄆ ᄆᄆᄆᄆᄆᄆᄆᄆᄆ /  
ᄆᄆᄆᄆᄆ ᄆᄆᄆᄆᄆᄆᄆᄆ ᄆᄆᄆᄆᄆᄆᄆᄆᄆ ᄆᄆᄆᄆᄆᄆᄆᄆᄆ ᄆᄆᄆᄆᄆᄆᄆᄆᄆᄆᄆ  
NUNAVUT COMMUNITY INFRASTRUCTURE ADVISORY COMMITTEE /  
COMMUNITY AND GOVERNMENT SERVICES CAPITAL PROJECTS

5-ᄆᄆᄆᄆ ᄆᄆᄆᄆᄆ ᄆᄆᄆᄆᄆᄆᄆᄆᄆ ᄆᄆᄆᄆᄆᄆᄆᄆᄆᄆ ᄆᄆᄆᄆᄆᄆᄆᄆᄆᄆ 5-Year Municipal Rural Infrastructure Fund Projects	ᄆᄆᄆᄆᄆᄆᄆᄆ ᄆᄆᄆᄆᄆᄆᄆᄆ 2007/08 Revised	ᄆᄆᄆᄆᄆᄆᄆ 2008/09 Planned	ᄆᄆᄆᄆᄆᄆᄆ 2009/10 Planned	ᄆᄆᄆᄆᄆᄆᄆ 2010/11 Planned	ᄆᄆᄆᄆᄆᄆᄆ 2011/12 Planned	ᄆᄆᄆᄆᄆᄆᄆ 2012/13 Planned
<b>ᄆᄆᄆᄆᄆᄆᄆ Qikiqtaaluk Region</b>						
<b>Δᄆᄆᄆᄆᄆ Arctic Bay</b>						
ᄆᄆᄆᄆᄆ ᄆᄆᄆᄆᄆᄆᄆ Community Hall	400	4,700	-	-	-	-
<b>ᄆᄆᄆᄆᄆᄆᄆ Grise Fiord</b>						
ᄆᄆᄆᄆᄆ ᄆᄆᄆᄆᄆᄆᄆ ᄆᄆᄆᄆᄆᄆᄆᄆᄆᄆᄆᄆ Qaggivik Community Centre Expansion	-	200	1,300	-	-	-
<b>ᄆᄆᄆᄆᄆᄆ Hall Beach</b>						
ᄆᄆᄆᄆᄆ ᄆᄆᄆᄆᄆᄆᄆ ᄆᄆᄆᄆᄆᄆᄆᄆᄆᄆᄆᄆ Community Hall Expansion	-	200	1,800	-	-	-
<b>Δᄆᄆᄆᄆᄆ Igloolik</b>						
Δᄆᄆᄆᄆᄆᄆᄆ ᄆᄆᄆᄆᄆ ᄆᄆᄆᄆᄆᄆᄆᄆᄆ Replacement of Community Hall	-	300	4,800	-	-	-
<b>ᄆᄆᄆᄆᄆᄆᄆ Resolute Bay</b>						
ᄆᄆᄆᄆᄆᄆᄆ Arena	-	1,000	4,000	-	-	-
<b>ᄆᄆᄆᄆᄆᄆᄆ ᄆᄆᄆᄆᄆᄆᄆᄆ Total Qikiqtaaluk Region</b>		<b>6,400</b>	<b>11,900</b>	-	-	-

<b>ᄆᄆᄆᄆᄆᄆ Kivalliq Region</b>						
<b>ᄆᄆᄆᄆᄆᄆᄆ Rankin Inlet</b>						
ᄆᄆᄆᄆᄆᄆᄆᄆᄆᄆ ᄆᄆᄆᄆᄆᄆᄆᄆᄆ Retrofit at Arena	-	200	800	-	-	-
<b>ᄆᄆᄆᄆᄆᄆ Repulse Bay</b>						
ᄆᄆᄆᄆᄆ ᄆᄆᄆᄆᄆᄆᄆ Community Hall	-	900	4,100	-	-	-



ᄆᄆᄆ ᄆᄆᄆ ᄆᄆᄆᄆᄆᄆ ᄆᄆᄆᄆᄆᄆᄆᄆᄆ ᄆᄆᄆᄆᄆᄆᄆᄆᄆ /  
 ᄆᄆᄆᄆ ᄆᄆᄆᄆᄆᄆ ᄆᄆᄆᄆᄆᄆᄆᄆᄆ ᄆᄆᄆᄆᄆᄆᄆᄆᄆ ᄆᄆᄆᄆᄆᄆᄆᄆᄆ  
 NUNAVUT COMMUNITY INFRASTRUCTURE ADVISORY COMMITTEE/  
 COMMUNITY AND GOVERNMENT SERVICES CAPITAL PROJECTS

5-ᄆᄆᄆ ᄆᄆᄆᄆᄆᄆᄆᄆᄆ ᄆᄆᄆᄆᄆᄆᄆᄆᄆ ᄆᄆᄆᄆᄆᄆᄆᄆᄆ ᄆᄆᄆᄆᄆᄆᄆᄆᄆᄆ ᄆᄆᄆᄆᄆᄆᄆᄆᄆ	ᄆᄆᄆᄆᄆᄆᄆᄆᄆ ᄆᄆᄆᄆᄆᄆᄆᄆᄆ 2007/08 Revised	ᄆᄆᄆᄆᄆᄆᄆᄆᄆ 2008/09 Planned	ᄆᄆᄆᄆᄆᄆᄆᄆᄆ 2009/10 Planned	ᄆᄆᄆᄆᄆᄆᄆᄆᄆ 2010/11 Planned	ᄆᄆᄆᄆᄆᄆᄆᄆᄆ 2011/12 Planned	ᄆᄆᄆᄆᄆᄆᄆᄆᄆ 2012/13 Planned
<b>ᄆᄆᄆᄆᄆᄆᄆᄆᄆ Qikiqtaaluk Region</b>						
<b>ᄆᄆᄆᄆᄆᄆᄆᄆᄆ Resolute Bay</b>						
ᄆᄆᄆᄆᄆᄆ ᄆᄆᄆᄆᄆᄆ ᄆᄆᄆᄆᄆᄆ Sewage and Water Works	786	1,000	204	-	-	-
<b>ᄆᄆᄆᄆᄆᄆᄆᄆᄆ Total Qikiqtaaluk Region</b>		<b>1,000</b>	<b>204</b>	<b>-</b>	<b>-</b>	<b>-</b>
<b>ᄆᄆᄆᄆᄆᄆ Kivalliq Region</b>						
<b>ᄆᄆᄆᄆᄆᄆᄆᄆ Rankin Inlet</b>						
ᄆᄆᄆᄆᄆᄆ ᄆᄆᄆᄆᄆᄆᄆᄆᄆ Sewage Treatment Plant	2,100	4,200	2,100	8,900	300	-
<b>ᄆᄆᄆᄆᄆᄆᄆᄆ Total Kivalliq Region</b>		<b>4,200</b>	<b>2,100</b>	<b>8,900</b>	<b>300</b>	<b>-</b>
<b>ᄆᄆᄆᄆᄆᄆ Kitikmeot Region</b>						
<b>ᄆᄆᄆᄆᄆᄆ Kugaaruk</b>						
ᄆᄆᄆᄆᄆᄆᄆ Sewage Lagoon	-	1,788	1,000	140	-	-
<b>ᄆᄆᄆᄆᄆᄆᄆ Kugluktuk</b>						
ᄆᄆᄆᄆᄆᄆ ᄆᄆᄆᄆᄆᄆᄆᄆ Water Treatment Plant	561	2,000	900	-	-	-
ᄆᄆᄆᄆᄆᄆᄆ ᄆᄆᄆᄆᄆᄆᄆᄆ Sewage Lagoon and Solid Waste	868	2,000	5,000	64	-	-
<b>ᄆᄆᄆᄆᄆᄆᄆᄆ Total Kitikmeot Region</b>		<b>5,788</b>	<b>6,900</b>	<b>204</b>	<b>-</b>	<b>-</b>
<b>ᄆᄆᄆᄆᄆᄆ ᄆᄆᄆᄆᄆᄆᄆᄆᄆ ᄆᄆᄆᄆᄆᄆᄆᄆᄆ ᄆᄆᄆᄆᄆᄆᄆᄆᄆᄆ Total Strategic Infrastructure Fund Projects</b>		<b>10,988</b>	<b>9,204</b>	<b>9,104</b>	<b>300</b>	<b>-</b>







Δᄁᄁᄁᄁᄁ V:  
ᄁᄁᄁᄁᄁᄁᄁᄁ ᄁᄁᄁᄁᄁᄁ ᄁᄁᄁᄁᄁᄁᄁ  
2006-2007



APPENDIX V:  
COMPLETED CAPITAL PROJECTS  
2006-2007





Δ/Γ-Δ/Γ-Δ/Γ-Δ/Γ-Δ/Γ Δ/Γ-Δ/Γ-Δ/Γ  
HEALTH AND SOCIAL SERVICES

Λ/Γ-Δ/Γ-Δ/Γ-Δ/Γ 2006-2007 Completed Capital Projects	Δ/Γ-Δ/Γ-Δ/Γ-Δ/Γ-Δ/Γ Original Budget (\$000)	Δ/Γ-Δ/Γ-Δ/Γ-Δ/Γ-Δ/Γ Final Budget (\$000)	Δ/Γ-Δ/Γ-Δ/Γ-Δ/Γ-Δ/Γ Total Completed Cost (\$000)
<b>Δ/Γ-Δ/Γ-Δ/Γ-Δ/Γ-Δ/Γ <i>Qikiqtaaluk Region</i></b>			
<b>Δ/Γ-Δ/Γ-Δ/Γ-Δ/Γ-Δ/Γ <i>Qikiqtaaluk - various</i></b>			
Δ/Γ-Δ/Γ-Δ/Γ-Δ/Γ-Δ/Γ-Δ/Γ Qikiqtaaluk Region - equipment and vehicles	100	188	110
<b>Δ/Γ-Δ/Γ-Δ/Γ-Δ/Γ-Δ/Γ <i>Iqaluit</i></b>			
Δ/Γ-Δ/Γ-Δ/Γ-Δ/Γ-Δ/Γ-Δ/Γ Baffin Regional Hospital - equipment and vehicles	80	80	47
FFN-Δ/Γ-Δ/Γ-Δ/Γ-Δ/Γ-Δ/Γ-Δ/Γ FFN and Portable Ultrasound Equipment	193	193	182
<b>Δ/Γ-Δ/Γ-Δ/Γ-Δ/Γ-Δ/Γ-Δ/Γ <i>Total Qikiqtaaluk Region</i></b>	<b>373</b>	<b>461</b>	<b>339</b>
<b>Δ/Γ-Δ/Γ-Δ/Γ-Δ/Γ-Δ/Γ-Δ/Γ <i>Kivalliq Region</i></b>			
<b>Δ/Γ-Δ/Γ-Δ/Γ-Δ/Γ-Δ/Γ-Δ/Γ <i>Kivalliq - various</i></b>			
Δ/Γ-Δ/Γ-Δ/Γ-Δ/Γ-Δ/Γ-Δ/Γ Kivalliq Region - equipment and vehicles	100	46	42
<b>Δ/Γ-Δ/Γ-Δ/Γ-Δ/Γ-Δ/Γ-Δ/Γ <i>Total Kivalliq Region</i></b>	<b>100</b>	<b>46</b>	<b>42</b>
<b>Δ/Γ-Δ/Γ-Δ/Γ-Δ/Γ-Δ/Γ-Δ/Γ <i>Kitikmeot Region</i></b>			
<b>Δ/Γ-Δ/Γ-Δ/Γ-Δ/Γ-Δ/Γ-Δ/Γ <i>Cambridge Bay</i></b>			
Δ/Γ-Δ/Γ-Δ/Γ-Δ/Γ-Δ/Γ-Δ/Γ Social Services Renovations	135	348	347
Δ/Γ-Δ/Γ-Δ/Γ-Δ/Γ-Δ/Γ-Δ/Γ Kitikmeot Region - equipment and vehicles	100	100	83
<b>Δ/Γ-Δ/Γ-Δ/Γ-Δ/Γ-Δ/Γ-Δ/Γ <i>Total Kitikmeot Region</i></b>	<b>235</b>	<b>448</b>	<b>430</b>
<b>Δ/Γ-Δ/Γ-Δ/Γ-Δ/Γ-Δ/Γ-Δ/Γ <i>Total Health &amp; Social Services</i></b>	<b>708</b>	<b>955</b>	<b>811</b>

ᐃᓴᓂᓴᓂᓴᓂ  
ENVIRONMENT

ᐱᓴᓂᓴᓂᓴᓂᓴᓂ ᐃᓯᓕᓴᓂ ᐱᓕᓂᐃᓴᓂ 2006-2007 Completed Capital Projects	ᐃᓴᓂᓴᓂᓴᓂᓴᓂᓴᓂ ᐃᓴᓂᓴᓂᓴᓂᓴᓂᓴᓂ Original Budget (\$000)	ᐃᓴᓂᓴᓂᓴᓂᓴᓂᓴᓂᓴᓂ ᐃᓴᓂᓴᓂᓴᓂᓴᓂᓴᓂ Final Budget (\$000)	ᓂᓂᓴᓂᓴᓂ ᐱᓴᓂᓴᓂᓴᓂᓴᓂ ᐃᓴᓂᓴᓂᓴᓂᓴᓂ Total Completed Cost (\$000)
<b>ᓴᓴᓂᓴᓂᓴᓂ Qikiqtaaluk Region</b>			
<b>ᓴᓴᓂᓴᓂ Hall Beach</b>			
ᐃᓴᓂᓴᓂᓴᓂᓴᓂ ᓂᓂᓴᓂᓴᓂ ᐃᓴᓂᓴᓂᓴᓂᓴᓂᓴᓂ Wildlife Office Replacement	575	1,125	1,125
<b>ᓂᓂᓴᓂᓴᓂ ᓴᓴᓂᓴᓂᓴᓂ Total Qikiqtaaluk Region</b>	<b>575</b>	<b>1,125</b>	<b>1,125</b>
<b>ᓴᓴᓂᓴᓂᓴᓂ Kivalliq Region</b>			
<b>ᐃᓴᓂᓴᓂᓴᓂ Chesterfield Inlet</b>			
ᐃᓴᓂᓴᓂᓴᓂᓴᓂ ᓂᓂᓴᓂᓴᓂ ᐃᓴᓂᓴᓂᓴᓂᓴᓂᓴᓂ Wildlife Office Replacement	618	789	789
<b>ᓂᓂᓴᓂᓴᓂ Whale Cove</b>			
ᐃᓴᓂᓴᓂᓴᓂᓴᓂ ᓂᓂᓴᓂᓴᓂ ᐃᓴᓂᓴᓂᓴᓂᓴᓂᓴᓂ Wildlife Office Replacement	631	768	768
<b>ᓂᓂᓴᓂᓴᓂ ᓴᓴᓂᓴᓂᓴᓂ Total Kivalliq Region</b>	<b>1,249</b>	<b>1,557</b>	<b>1,557</b>
<b>ᐃᓴᓂᓴᓂᓴᓂᓴᓂ ᓂᓂᓴᓂᓴᓂ Total Environment</b>	<b>1,824</b>	<b>1,824</b>	<b>1,824</b>

ᓂᓄᓂᓂ ᓂᓄᓂᓂ ᓂᓄᓂᓂ ᓂᓄᓂᓂ  
COMMUNITY AND GOVERNMENT SERVICES

ᓂᓄᓂᓂ ᓂᓄᓂᓂ ᓂᓄᓂᓂ 2006-2007 Completed Capital Projects	ᐃᓕᓕᓐᓂ ᓂᓄᓂᓂ ᓂᓄᓂᓂ Original Budget (\$000)	ᐃᓕᓕᓐᓂ ᓂᓄᓂᓂ ᓂᓄᓂᓂ Final Budget (\$000)	ᓂᓄᓂᓂ ᓂᓄᓂᓂ ᓂᓄᓂᓂ Total Completed Cost (\$000)
<b>ᓂᓄᓂᓂ ᓂᓄᓂᓂ</b> <i>Qikiqtaaluk Region</i>			
<b>ᓂᓄᓂᓂ</b> <i>Cape Dorset</i>			
ᓂᓄᓂᓂ ᓂᓄᓂᓂ ᓂᓄᓂᓂ ᓂᓄᓂᓂ Upgrade Washrooms Quluaq School	60	70	60
<b>ᓂᓄᓂᓂ</b> <i>Pangnirtung</i>			
ᓂᓄᓂᓂ Fire Hall	530	1,135	1,108
<b>ᓂᓄᓂᓂ</b> <i>Qikiqtarjuaq</i>			
ᓂᓄᓂᓂ ᓂᓄᓂᓂ ᓂᓄᓂᓂ ᓂᓄᓂᓂ Tank Farm Capacities and Code Compliance	2,840	2,638	2,629
<b>ᓂᓄᓂᓂ ᓂᓄᓂᓂ Total Qikiqtaaluk Region</b>	<b>3,430</b>	<b>3,843</b>	<b>3,797</b>
<b>ᓂᓄᓂᓂ</b> <i>Kitikmeot Region</i>			
<b>ᓂᓄᓂᓂ</b> <i>Gjoa Haven</i>			
ᓂᓄᓂᓂ ᓂᓄᓂᓂ ᓂᓄᓂᓂ ᓂᓄᓂᓂ Emergency Water System Repair	-	750	748
<b>ᓂᓄᓂᓂ ᓂᓄᓂᓂ Total Kitikmeot Region</b>	<b>-</b>	<b>750</b>	<b>748</b>
<b>ᓂᓄᓂᓂ ᓂᓄᓂᓂ ᓂᓄᓂᓂ ᓂᓄᓂᓂ Total Community and Government Services</b>	<b>3,430</b>	<b>4,593</b>	<b>4,545</b>

ᄡᄡᄡᄡᄡᄡᄡᄡᄡ Δᄡᄡᄡᄡᄡᄡᄡᄡ  
 ECONOMIC DEVELOPMENT AND TRANSPORTATION

ᄡᄡᄡᄡᄡᄡᄡᄡᄡ ᄡᄡᄡᄡᄡᄡᄡᄡᄡ 2006-2007 Completed Capital Projects	ᄡᄡᄡᄡᄡᄡᄡᄡᄡᄡᄡ ᄡᄡᄡᄡᄡᄡᄡᄡᄡᄡᄡ Original Budget (\$000)	ᄡᄡᄡᄡᄡᄡᄡᄡᄡᄡᄡ ᄡᄡᄡᄡᄡᄡᄡᄡᄡᄡᄡ Final Budget (\$000)	ᄡᄡᄡᄡᄡᄡᄡᄡᄡᄡᄡ ᄡᄡᄡᄡᄡᄡᄡᄡᄡᄡᄡ Total Completed Cost (\$000)
<b>ᄡᄡᄡᄡᄡᄡᄡᄡᄡ Qikiqtaaluk Region</b>			
<b>ᄡᄡᄡᄡᄡᄡᄡᄡᄡ Pond Inlet</b>			
ᄡᄡᄡᄡᄡᄡᄡᄡᄡᄡᄡ ᄡᄡᄡᄡᄡᄡᄡᄡᄡᄡᄡ Pond Inlet Air Terminal Building	1,866	1,936	1,936
<b>ᄡᄡᄡᄡᄡᄡᄡᄡᄡ Total Qikiqtaaluk Region</b>	<b>1,866</b>	<b>1,936</b>	<b>1,936</b>
<b>ᄡᄡᄡᄡᄡᄡᄡᄡᄡ Kitikmeot Region</b>			
<b>ᄡᄡᄡᄡᄡᄡᄡᄡᄡ Coral Harbour</b>			
ᄡᄡᄡᄡᄡᄡᄡᄡᄡᄡᄡ ᄡᄡᄡᄡᄡᄡᄡᄡᄡᄡᄡ Coral Harbour Air Terminal Building	1,636	1,755	1,755
<b>ᄡᄡᄡᄡᄡᄡᄡᄡᄡ Total Kitikmeot Region</b>	<b>1,636</b>	<b>1,755</b>	<b>1,755</b>
<b>ᄡᄡᄡᄡᄡᄡᄡᄡᄡᄡᄡ ᄡᄡᄡᄡᄡᄡᄡᄡᄡᄡᄡ ᄡᄡᄡᄡᄡᄡᄡᄡᄡᄡᄡ Total Economic Development and Transportation</b>	<b>3,502</b>	<b>3,691</b>	<b>3,691</b>
<b>ᄡᄡᄡᄡᄡᄡᄡᄡᄡᄡᄡ GRAND TOTAL</b>	<b>34,286</b>	<b>46,950</b>	<b>45,508</b>

