

ᐃᓗᑦᑦᑦᑦᑦᑦ ᑦᑦᑦᑦᑦᑦ

ᑦᑦᑦᑦᑦᑦᑦᑦ ᑦᑦᑦᑦᑦᑦ

ᑦᑦᑦᑦᑦᑦᑦᑦ	iv
ᑦᑦᑦᑦᑦᑦᑦᑦ ᑦᑦᑦᑦᑦᑦᑦᑦᑦ - ᑦᑦ ᑦᑦᑦᑦᑦᑦ ᑦᑦᑦᑦᑦᑦ ᑦᑦᑦᑦᑦᑦᑦᑦᑦ	vi
ᑦᑦᑦᑦᑦᑦᑦᑦ ᑦᑦᑦᑦᑦᑦᑦᑦ ᑦᑦᑦᑦᑦᑦᑦᑦᑦ, ᑦᑦᑦᑦᑦᑦᑦᑦᑦᑦ	vii
ᑦᑦᑦᑦᑦᑦᑦᑦ ᑦᑦᑦᑦᑦᑦᑦᑦ ᑦᑦᑦᑦᑦᑦᑦᑦᑦᑦ, ᑦᑦᑦᑦᑦᑦᑦ	viii

ᑦᑦᑦᑦᑦᑦᑦ ᑦᑦᑦᑦᑦᑦᑦᑦᑦᑦᑦᑦ ᑦᑦᑦᑦᑦᑦᑦᑦᑦ

ᑦᑦᑦᑦᑦᑦᑦᑦ	A-1
ᑦᑦᑦᑦᑦᑦᑦᑦᑦ	E-1
ᑦᑦᑦᑦᑦᑦᑦᑦᑦᑦᑦᑦᑦ	F-1
ᑦᑦᑦᑦᑦᑦᑦᑦᑦᑦᑦᑦᑦ	G-1
ᑦᑦᑦᑦᑦᑦᑦᑦᑦᑦᑦᑦᑦᑦ ᑦᑦᑦᑦᑦᑦᑦᑦᑦᑦᑦᑦᑦ	H-1
ᑦᑦᑦᑦᑦᑦᑦᑦᑦᑦᑦᑦᑦᑦ	I-1
ᑦᑦᑦᑦᑦᑦ ᑦᑦᑦᑦᑦᑦᑦᑦᑦᑦ ᑦᑦᑦᑦᑦᑦᑦᑦᑦᑦᑦᑦᑦ	J-1
ᑦᑦᑦᑦᑦᑦᑦᑦᑦᑦᑦᑦᑦᑦ ᑦᑦᑦᑦᑦᑦᑦᑦᑦᑦᑦᑦᑦᑦᑦ	K-1
ᑦᑦᑦᑦᑦᑦ ᑦᑦᑦᑦᑦᑦᑦᑦᑦᑦᑦᑦᑦᑦᑦᑦᑦᑦ	L-1

ᑦᑦᑦᑦᑦᑦᑦᑦ I- ᑦᑦᑦᑦᑦᑦᑦ ᑦᑦᑦᑦᑦᑦᑦᑦ ᑦᑦᑦᑦᑦᑦ	I-1
-------------------------------------	-----

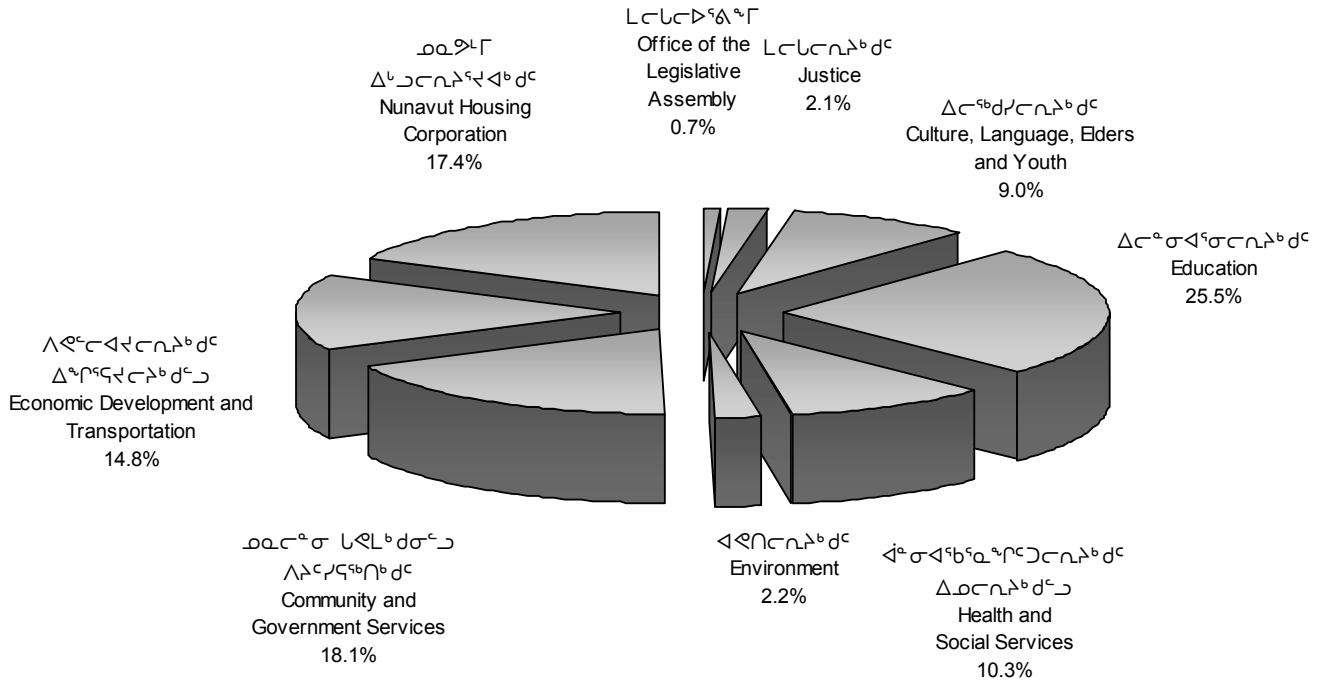
ᑦᑦᑦᑦᑦᑦᑦᑦ II- ᑦᑦᑦᑦᑦᑦᑦᑦᑦᑦ ᑦᑦᑦᑦᑦᑦᑦᑦᑦᑦ	II-1
------------------------------------	------

ᑦᑦᑦᑦᑦᑦᑦᑦ III- 5-ᑦᑦᑦᑦᑦᑦᑦ ᑦᑦᑦᑦᑦᑦᑦ ᑦᑦᑦᑦᑦᑦᑦᑦᑦᑦ	III-1
--	-------

ᑦᑦᑦᑦᑦᑦᑦᑦ IV- ᑦᑦᑦᑦᑦᑦ ᑦᑦᑦᑦᑦᑦ ᑦᑦᑦᑦᑦᑦᑦᑦᑦᑦᑦᑦ ᑦᑦᑦᑦᑦᑦᑦᑦᑦᑦᑦᑦᑦ ᑦᑦᑦᑦᑦᑦᑦᑦᑦᑦᑦᑦᑦ / ᑦᑦᑦᑦᑦᑦ ᑦᑦᑦᑦᑦᑦᑦᑦᑦᑦᑦᑦᑦ ᑦᑦᑦᑦᑦᑦᑦᑦᑦᑦᑦᑦᑦ ᑦᑦᑦᑦᑦᑦᑦᑦᑦᑦᑦᑦᑦ	IV-1
--	------



ᐱᕐᑭᕐᑦᑲ ᐱᕐᑭᕐᑦᑲ ᐱᕐᑭᕐᑦᑲ ᐱᕐᑭᕐᑦᑲ ᐱᕐᑭᕐᑦᑲ WHERE THE CAPITAL DOLLARS WILL BE SPENT

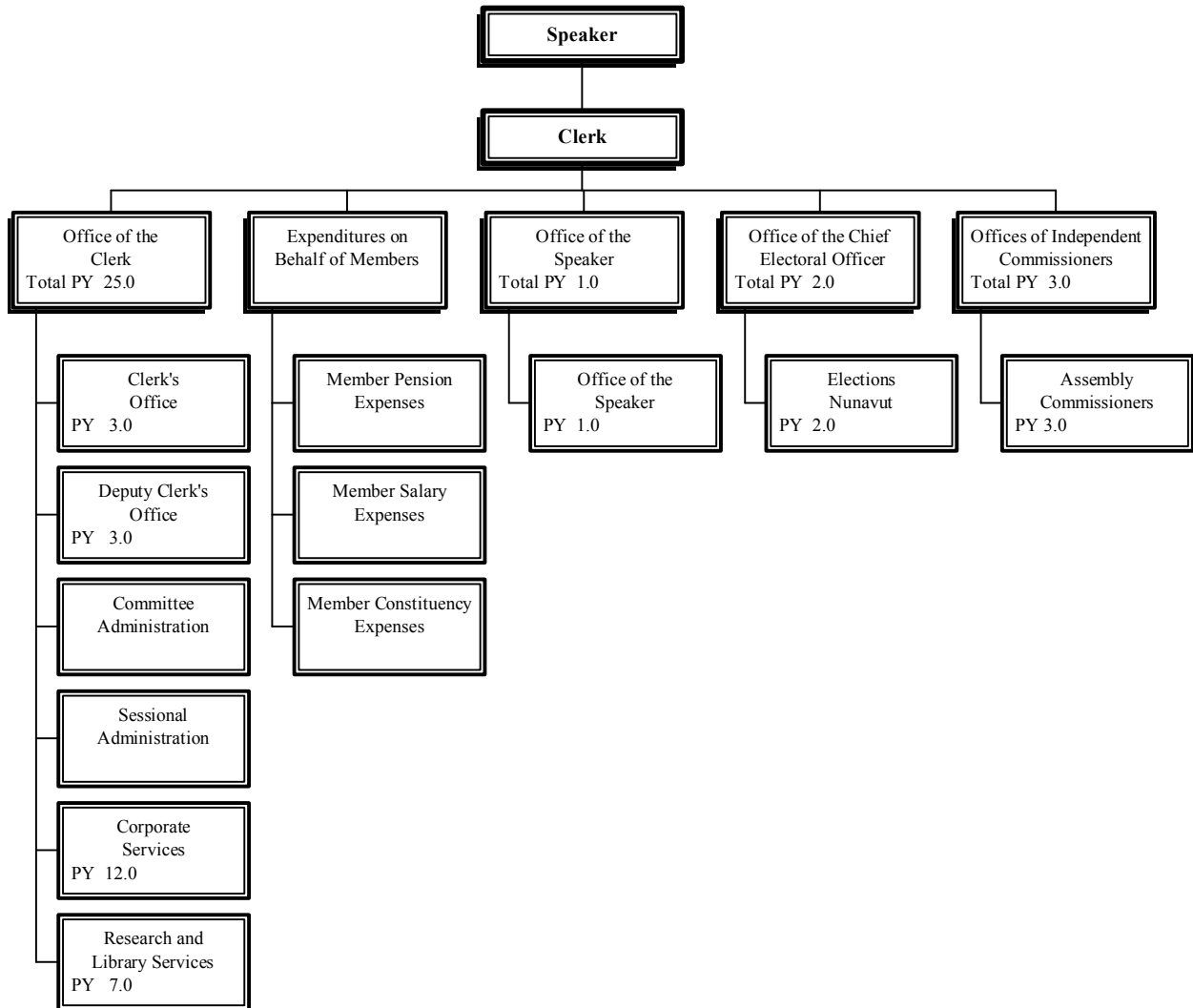




Peter Kilabuk
 Speaker of the Legislative Assembly

John Quirke
 Clerk of the Legislative Assembly

ACCOUNTING STRUCTURE CHART







ᐃᑦᑲᑦᑲᑦᑲᑦᑲᑦᑲᑦᑲᑦ



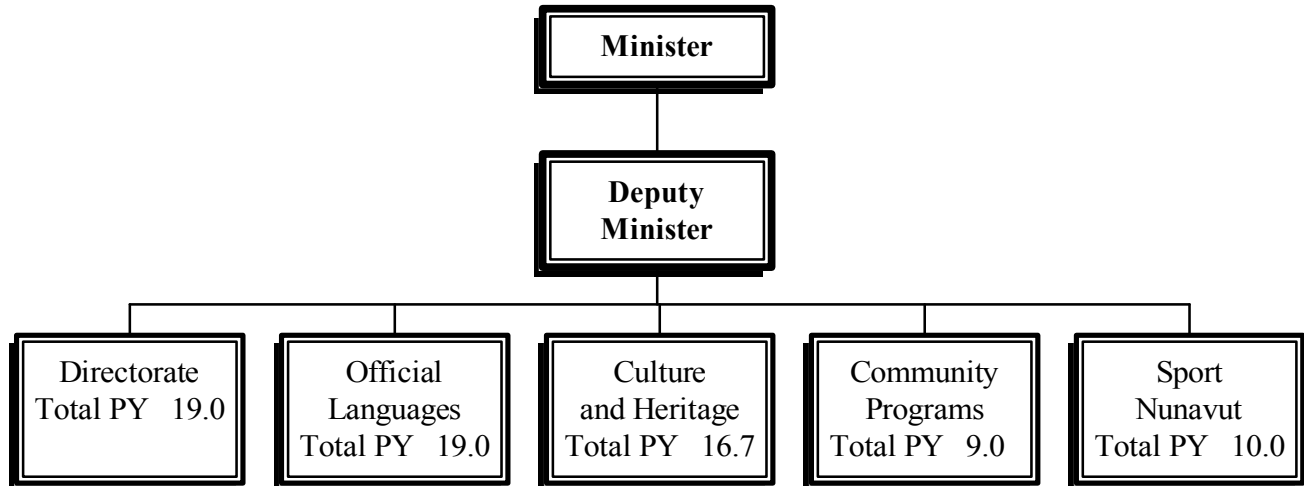
CULTURE, LANGUAGE,
ELDERS AND YOUTH

Louis Tapardjuk
Minister

David Akeegok
Deputy Minister

Naullaq Arnaquq
Assistant Deputy Minister

ACCOUNTING STRUCTURE CHART



ᐃᑲᑦᑲᑦᑲᑦᑲᑦᑲᑦ ᐃᑲᑦᑲᑦᑲᑦᑲᑦ
DETAIL OF EXPENDITURES

	ᐃᑲᑦᑲᑦᑲᑦᑲᑦᑲᑦ	ᐃᑲᑦᑲᑦᑲᑦᑲᑦᑲᑦ	ᐃᑲᑦᑲᑦᑲᑦᑲᑦᑲᑦ	ᑲᑦᑲᑦᑲᑦᑲᑦᑲᑦ	
	ᐃᑲᑦᑲᑦᑲᑦᑲᑦᑲᑦ	ᐃᑲᑦᑲᑦᑲᑦᑲᑦᑲᑦ	ᐃᑲᑦᑲᑦᑲᑦᑲᑦᑲᑦ	ᐃᑲᑦᑲᑦᑲᑦᑲᑦᑲᑦ	
	2007-2008	2006-2007	2006-2007	2005-2006	
	Capital	Revised	Capital	Actual	
	Estimates	Estimates	Estimates	Expenditures	
	(\$000)	(\$000)	(\$000)	(\$000)	
ᐃᑲᑦᑲᑦᑲᑦᑲᑦᑲᑦ ᐃᑲᑦᑲᑦᑲᑦᑲᑦᑲᑦ	Capital Expenditures				
ᑲᑦᑲᑦᑲᑦᑲᑦᑲᑦᑲᑦ ᐃᑲᑦᑲᑦᑲᑦᑲᑦᑲᑦ	Grants and Contributions	1,655	2,084	1,623	902
ᑲᑦᑲᑦᑲᑦᑲᑦᑲᑦᑲᑦ ᐃᑲᑦᑲᑦᑲᑦᑲᑦᑲᑦ	Tangible Assets	6,640	2,479	1,560	154
ᑲᑦᑲᑦᑲᑦᑲᑦᑲᑦᑲᑦᑲᑦ ᐃᑲᑦᑲᑦᑲᑦᑲᑦᑲᑦᑲᑦ	Computer Hardware and Software	-	-	-	-
ᑲᑦᑲᑦᑲᑦᑲᑦᑲᑦᑲᑦ ᐃᑲᑦᑲᑦᑲᑦᑲᑦᑲᑦ	Total Capital Expenditures	8,295	4,563	3,183	1,056

ᐋᑦᑲᑦᑲᑦᑲᑦ ᐱᑦᑲᑦᑲᑦᑲᑦ
DIRECTORATE

ᐱᑦᑲᑦᑲᑦᑲᑦ ᑭᑦᑲᑦᑲᑦᑲᑦ	ᐋᑦᑲᑦᑲᑦᑲᑦ ᑭᑦᑲᑦᑲᑦᑲᑦ	ᐋᑦᑲᑦᑲᑦᑲᑦ ᐋᑦᑲᑦᑲᑦᑲᑦ	ᐋᑦᑲᑦᑲᑦᑲᑦ ᐋᑦᑲᑦᑲᑦᑲᑦ	ᐋᑦᑲᑦᑲᑦᑲᑦ ᐋᑦᑲᑦᑲᑦᑲᑦ
Project Number	Detail of Capital	2007-2008 Capital Estimates (\$000)	2006-2007 Prior Year Cost (\$000)	2008-2012 Capital Plan (\$000)
ᑳᑦᑲᑦᑲᑦᑲᑦ ᐋᑦᑲᑦᑲᑦᑲᑦ				
Grants and Contributions				
<i>ᐋᑦᑲᑦᑲᑦᑲᑦᑲᑦ ᑭᑦᑲᑦᑲᑦᑲᑦ</i>				
Headquarters Region				
<i>ᑭᑦᑲᑦᑲᑦᑲᑦ - ᑭᑦᑲᑦᑲᑦᑲᑦ</i>				
Nunavut-Variou				
508012	ᑭᑦᑲᑦᑲᑦᑲᑦ ᐱᑦᑲᑦᑲᑦᑲᑦᑲᑦ, ᐃᑦᑲᑦᑲᑦᑲᑦ, ᐱᑦᑲᑦᑲᑦᑲᑦᑲᑦ ᑳᑦᑲᑦᑲᑦ Community Heritage, Elders & Youth Centres	987	968	4,151
507703	ᐱᑦᑲᑦᑲᑦᑲᑦᑲᑦ ᐱᑦᑲᑦᑲᑦᑲᑦ Recreation Facilities Projects	668	655	2,808
ᑲᑦᑲᑦᑲᑦᑲᑦ ᐋᑦᑲᑦᑲᑦᑲᑦᑲᑦᑲᑦᑲᑦ Total Headquarters Region		1,655	-	-
ᑲᑦᑲᑦᑲᑦᑲᑦ ᑳᑦᑲᑦᑲᑦᑲᑦ ᐋᑦᑲᑦᑲᑦᑲᑦ		1,655	-	-
Total Grants and Contributions				
ᑲᑦᑲᑦᑲᑦᑲᑦ ᐱᑦᑲᑦᑲᑦᑲᑦ				
Tangible Assets				
<i>ᐋᑦᑲᑦᑲᑦᑲᑦᑲᑦ ᑭᑦᑲᑦᑲᑦᑲᑦ</i>				
Headquarters Region				
<i>ᑭᑦᑲᑦᑲᑦᑲᑦ</i>				
Nunavut				
508019	ᑭᑦᑲᑦᑲᑦᑲᑦ ᐃᑦᑲᑦᑲᑦᑲᑦᑲᑦᑲᑦ Nunavut Heritage Centre	1,500	1,500	6,000
509077	ᐱᑦᑲᑦᑲᑦᑲᑦᑲᑦᑲᑦ ᐃᑦᑲᑦᑲᑦᑲᑦᑲᑦᑲᑦ Folk School	5,080	710	5,343
508018	ᑲᑦᑲᑦᑲᑦ ᐋᑦᑲᑦᑲᑦᑲᑦᑲᑦ (\$300,000 ᑳᑦᑲᑦᑲᑦᑲᑦ ᑳᑦᑲᑦᑲᑦ)	60	60	240
ᑲᑦᑲᑦᑲᑦᑲᑦ ᐋᑦᑲᑦᑲᑦᑲᑦᑲᑦᑲᑦᑲᑦᑲᑦ Total Headquarters Region		6,640	-	-
ᑲᑦᑲᑦᑲᑦᑲᑦ ᑲᑦᑲᑦᑲᑦᑲᑦ ᐋᑦᑲᑦᑲᑦᑲᑦ ᐱᑦᑲᑦᑲᑦᑲᑦ		6,640	-	-
Total Tangible Assets				



Δα°σΔι°σΔη°βΔ



EDUCATION

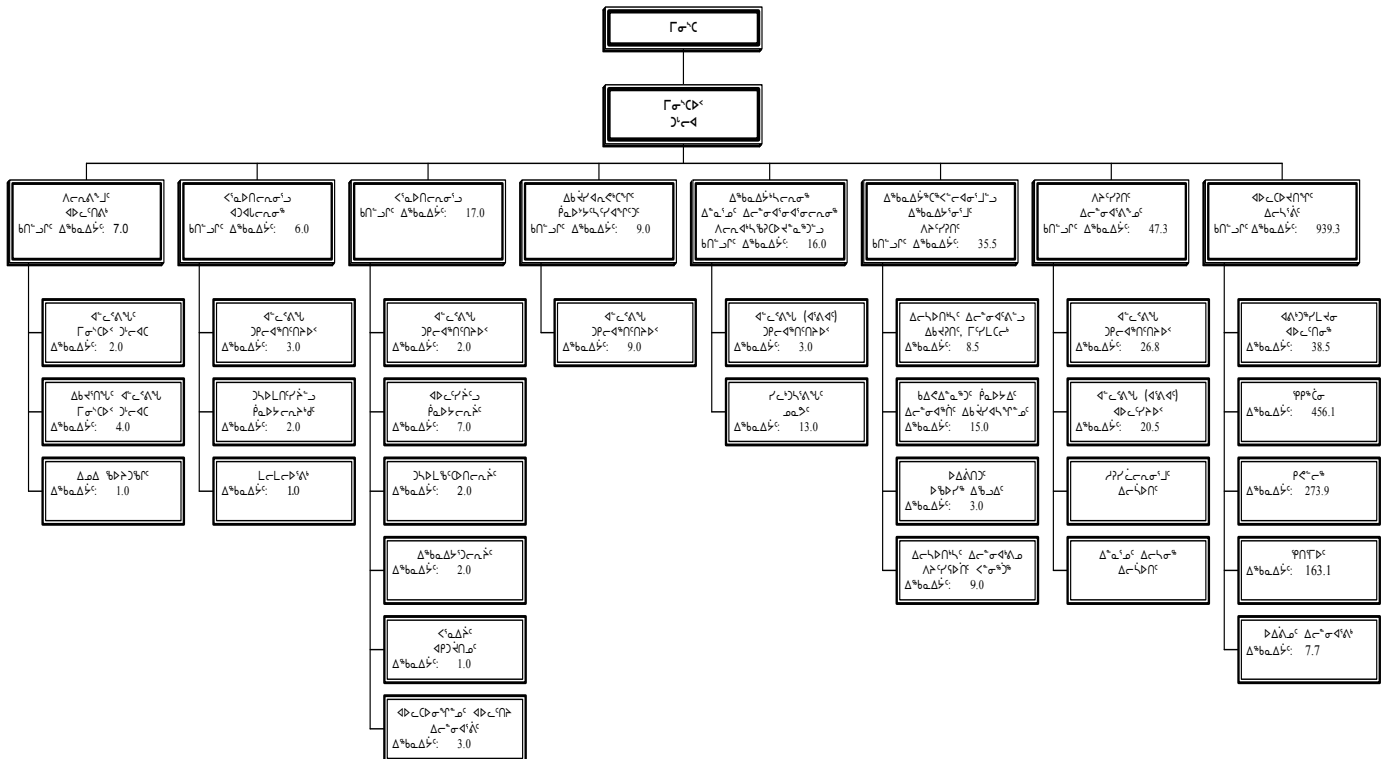
Δεεεε εε
 εεε

εε εε
 εεεεεεεε εεεεεεεε

εε εεε
 εεεεεεεε εεεεε

εεεε εεεεε
 εεεεεεεε εεεεεεεε

εεεεεεεεεε εεεεεεεεεε



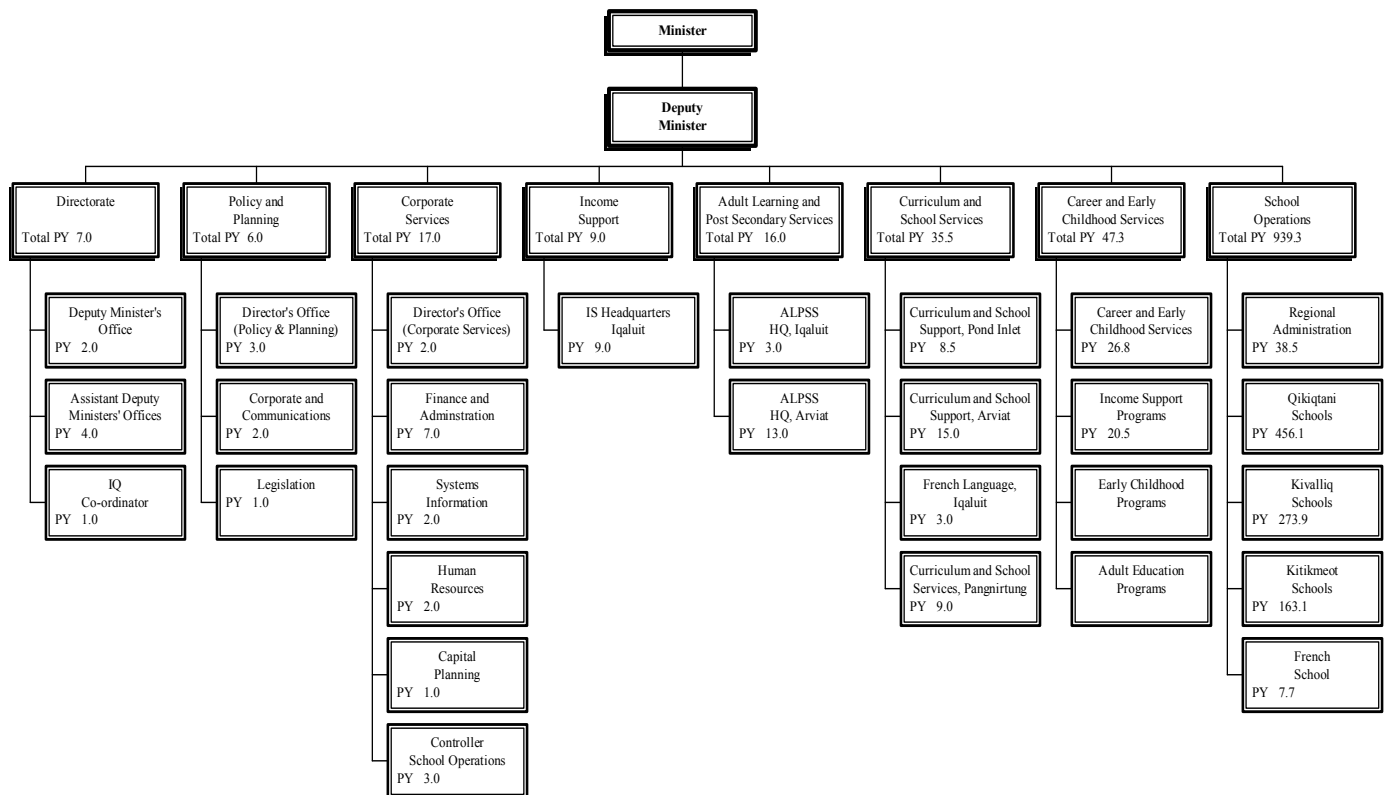
Edward Picco
 Minister

Peter Geikie
 Assistant Deputy Minister

Kathy Okpik
 Deputy Minister

Irene Tanuyak
 Assistant Deputy Minister

ACCOUNTING STRUCTURE CHART



ᐃᐱᑦᑭᑦᑭᑦᑭᑦᑭᑦᑭᑦᑭᑦ
DETAIL OF EXPENDITURES

	ᐃᐱᑦᑭᑦᑭᑦᑭᑦᑭᑦᑭᑦᑭᑦ ᐃᐱᑦᑭᑦᑭᑦᑭᑦᑭᑦᑭᑦᑭᑦ 2007-2008 Capital Estimates (\$000)	ᐃᑦᑭᑦᑭᑦᑭᑦᑭᑦᑭᑦᑭᑦ ᐃᐱᑦᑭᑦᑭᑦᑭᑦᑭᑦᑭᑦᑭᑦ 2006-2007 Revised Estimates (\$000)	ᐃᐱᑦᑭᑦᑭᑦᑭᑦᑭᑦᑭᑦᑭᑦ ᐃᐱᑦᑭᑦᑭᑦᑭᑦᑭᑦᑭᑦᑭᑦ 2006-2007 Capital Estimates (\$000)	ᑭᑦᑭᑦᑭᑦᑭᑦᑭᑦᑭᑦᑭᑦ ᐃᐱᑦᑭᑦᑭᑦᑭᑦᑭᑦᑭᑦᑭᑦ 2005-2006 Actual Expenditures (\$000)
ᐃᐱᑦᑭᑦᑭᑦᑭᑦᑭᑦᑭᑦᑭᑦᑭᑦ Capital Expenditures				
ᑭᑦᑭᑦᑭᑦᑭᑦᑭᑦᑭᑦᑭᑦᑭᑦᑭᑦᑭᑦ Grants and Contributions	-	-	-	-
ᑭᑦᑭᑦᑭᑦᑭᑦᑭᑦᑭᑦᑭᑦᑭᑦᑭᑦᑭᑦ Tangible Assets	23,395	34,483	19,737	14,936
ᑭᑦᑭᑦᑭᑦᑭᑦᑭᑦᑭᑦᑭᑦᑭᑦᑭᑦᑭᑦ Computer Hardware and Software	-	-	-	-
ᑭᑦᑭᑦᑭᑦᑭᑦᑭᑦᑭᑦᑭᑦᑭᑦᑭᑦᑭᑦ Total Capital Expenditures	23,395	34,483	19,737	14,936

Ν-Γ-Δ-ε- Λ-Α-Υ-Π-Ο-μ-ο-σ
 CORPORATE SERVICES

Λ-ο-ν-ο-μ-ο-σ Δ-ε-ν-ο-μ-ο-σ Project Number	Δ-ρ-ω-ν-ο-μ-ο-σ ε-μ-ε-Δ-ε-Δ-ε-ν-ο-σ Detail of Capital	Δ-ρ-ω-ν-ο-μ-ο-σ Δ-ω-ν-ο-μ-ο-σ 2007-2008 Capital Estimates (\$000)	Δ-σ-Υ-μ-ω-σ Δ-ε-ξ-υ-Γ- Δ-ρ-ο-μ-ο-σ 2006-2007 Prior Year Cost (\$000)	Δ-ρ-ω-ν-ο-μ-ο-σ <ε-μ-ε-Δ-ε-ν-ο-σ 2008-2012 Capital Plan (\$000)
Ο-π-η-ρ-ο-μ-ο-σ Tangible Assets				
Ρ-ε-ν-ο-μ-ο-σ Kivalliq Region				
Υ-λ-ο-σ Coral Harbour				
509075	Υ-μ-ο-Δ-ο-σ-Δ-ε-ν-ο-μ-ο-σ Sakku School Renovations	3,150	1,600	50
Β-ο-ρ-κ-ι-ν-ο-μ-ο-σ Rankin Inlet				
509009	Υ-λ-ο-μ-ο-σ-Δ-ε-ν-ο-μ-ο-σ NAC Student Accommodation	700	4,760	-
Ο-μ-ο-σ-μ-ο-σ Ρ-ε-ν-ο-μ-ο-σ Total Kivalliq Region		3,850	-	-
Κ-ι-τ-ι-κ-μ-ε-ο-μ-ο-σ Kitikmeot Region				
Γ-ο-α-β-ε-ν-ο-μ-ο-σ Gjoa Haven				
509057	Υ-π-ο-σ-θ-ε-ν-ο-μ-ο-σ Qikirtaq and Quqshuun School Addition	9,234	3,964	3,574
Ο-μ-ο-σ-μ-ο-σ Κ-ι-τ-ι-κ-μ-ε-ο-μ-ο-σ Total Kitikmeot Region		9,234	-	-
Ο-μ-ο-σ-μ-ο-σ Ο-π-η-ρ-ο-μ-ο-σ Total Tangible Assets		23,395	-	-





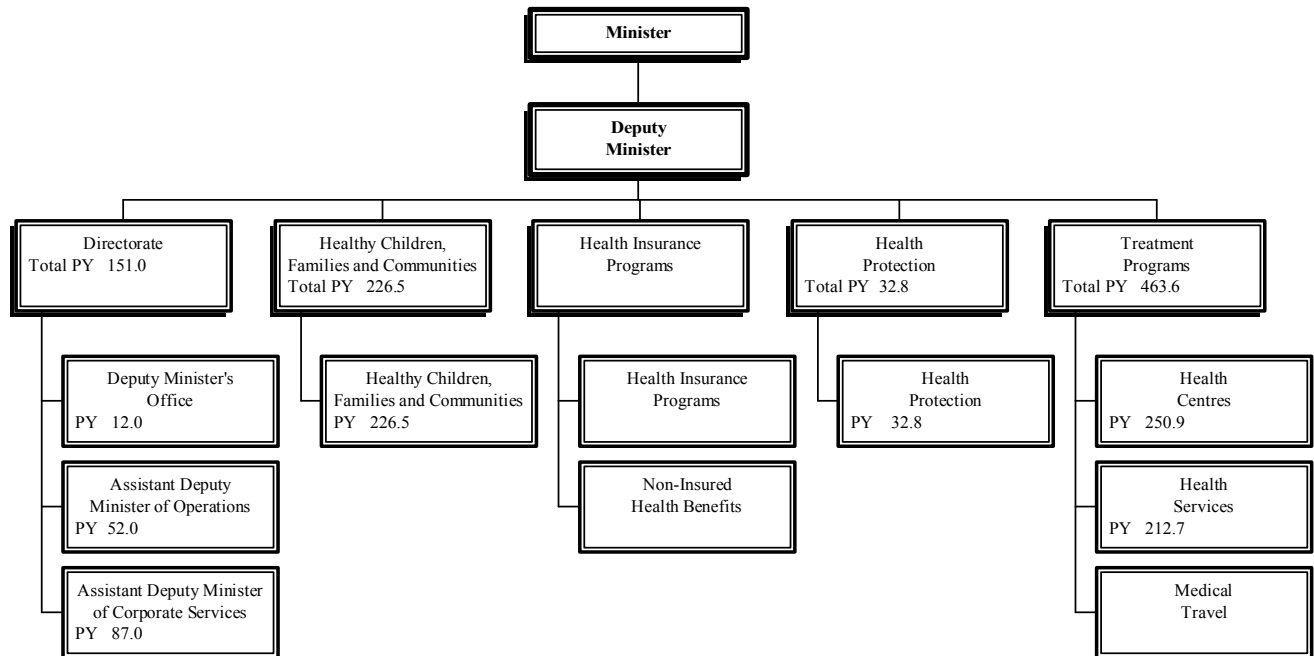
Leona Aglukkaq
Minister

David Richardson
Assistant Deputy Minister
Operations

Ron Browne
Deputy Minister

Phoebe Hainnu
Assistant Deputy Minister
Corporate Services

ACCOUNTING STRUCTURE CHART



ᐱᓂᑦᑦ ᖃᓄᓂᑦ ᐱᓄᓂᑦᑦ

ᐱᓄᓂᑦᑦᑦᑦᑦᑦ ᐱᓄᓂᑦᑦᑦᑦᑦᑦᑦ, ᖃᓄᓂᑦᑦᑦᑦᑦᑦᑦ ᐱᓄᓂᑦᑦᑦᑦᑦᑦᑦ ᐱᓄᓂᑦᑦᑦᑦᑦᑦᑦᑦᑦ ᐱᓄᓂᑦᑦᑦᑦᑦᑦᑦᑦᑦᑦ ᐱᓄᓂᑦᑦᑦᑦᑦᑦᑦᑦᑦᑦᑦᑦ ᐱᓄᓂᑦᑦᑦᑦᑦᑦᑦᑦᑦᑦ ᐱᓄᓂᑦᑦᑦᑦᑦᑦᑦᑦᑦᑦ ᐱᓄᓂᑦᑦᑦᑦᑦᑦᑦᑦᑦᑦᑦᑦ ᐱᓄᓂᑦᑦᑦᑦᑦᑦᑦᑦᑦᑦᑦᑦ ᐱᓄᓂᑦᑦᑦᑦᑦᑦᑦᑦᑦᑦᑦᑦ ᐱᓄᓂᑦᑦᑦᑦᑦᑦᑦᑦᑦᑦᑦᑦ.

MISSION

Our mission is to promote, protect and enhance the health and well-being of all Nunavummiut, incorporating Inuit Qaujimagajatuqangit at all levels of service delivery and design.

ᑭᓪᓂᐳᖅ ᑭᓪᓂᐳᖅ ᑭᓪᓂᐳᖅ
DETAIL OF EXPENDITURES

	ᑭᓪᓂᐳᖅ ᑭᓪᓂᐳᖅ	ᑭᓪᓂᐳᖅ ᑭᓪᓂᐳᖅ	ᑭᓪᓂᐳᖅ ᑭᓪᓂᐳᖅ	ᑭᓪᓂᐳᖅ ᑭᓪᓂᐳᖅ
	2007-2008 Capital Estimates (\$000)	2006-2007 Revised Estimates (\$000)	2006-2007 Capital Estimates (\$000)	2005-2006 Actual Expenditures (\$000)
ᑭᓪᓂᐳᖅ ᑭᓪᓂᐳᖅ	Capital Expenditures			
ᑭᓪᓂᐳᖅ ᑭᓪᓂᐳᖅ		-	-	-
ᑭᓪᓂᐳᖅ ᑭᓪᓂᐳᖅ	9,419	72,895	22,732	6,789
ᑭᓪᓂᐳᖅ ᑭᓪᓂᐳᖅ	-	-	-	389
ᑭᓪᓂᐳᖅ ᑭᓪᓂᐳᖅ ᑭᓪᓂᐳᖅ	9,419	72,895	22,732	7,178





ᐃᑲᑎᑦᑎᑦᑎᑦᑎᑦᑎᑦ



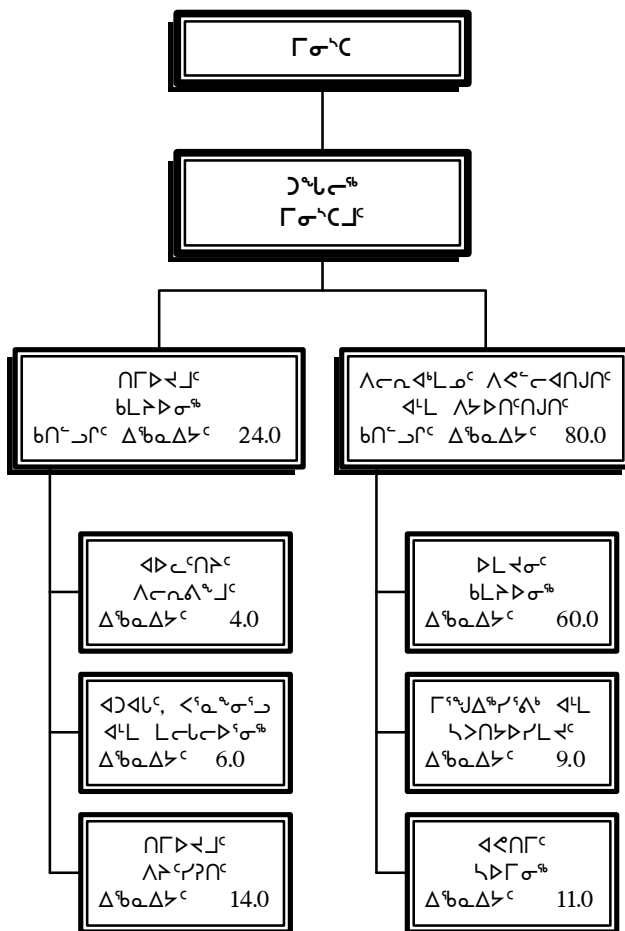
ENVIRONMENT

ᐱᓂᐅᓂᐅᓂᐅᐱ
 ᐱᓂᐅᓂᐅᐱ

ᓰᐱᓂᐅᓂᐅᐱ
 ᐱᓂᐅᓂᐅᐱ ᐱᓂᐅᓂᐅᐱ

ᓰᐱᓂᐅᓂᐅᐱ
 ᐱᓂᐅᓂᐅᐱ ᐱᓂᐅᓂᐅᐱ ᐱᓂᐅᓂᐅᐱ

ᐰᓄᐅᓂᐅᓂᐅᐱᓂᐅᓂᐅᓂᐅᐱ ᐱᓂᐅᓂᐅᐱᓂᐅᐱ

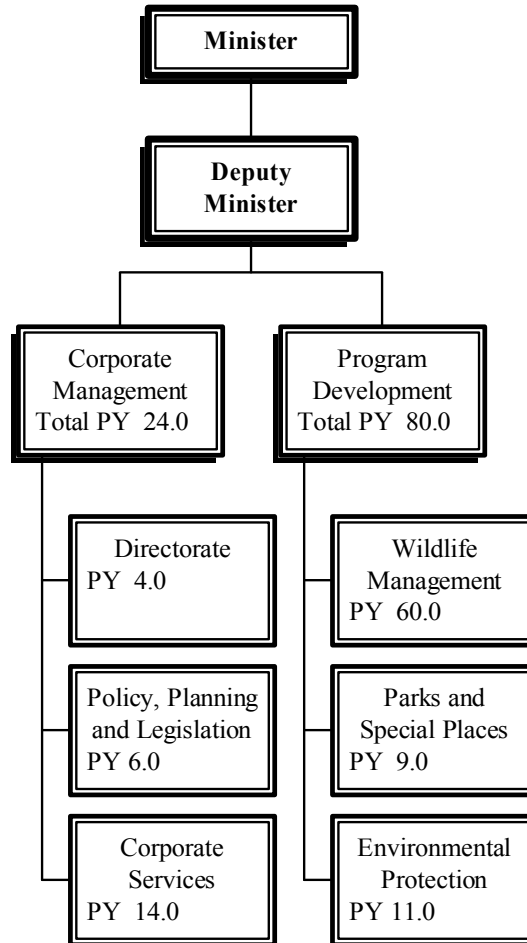


Patterk Netser
Minister

Simon Awa
Deputy Minister

Jane Cooper
Assistant Deputy Minister

ACCOUNTING STRUCTURE CHART



ᐱᑦᑎᐱᑦᑎᑦ ᐊᑕᑎᑦᑎᐱᐅᑦ

ᑕᑎᑎᑦ ᐊᑕᑎᑦᑎᐱᐅᑦ ᑕᑎᑎᑦᑎᐱᐅᑦ ᐊᑕᑎᑦᑎᐱᐅᑦ ᐱᑦᑎᐱᑦᑎᑦᑎᑦᑎᑦ ᐊᑕᑎᑦᑎᐱᐅᑦ ᐱᑦᑎᐱᑦᑎᑦᑎᑦᑎᑦ ᐊᑕᑎᑦᑎᐱᐅᑦ (ᑕᑎᑎᑦ, ᑎᑎᑎᑦ, ᐱᑎᑎᑦ), ᑎᑎᑎᑦᑎᑦᑎᑦᑎᑦ ᐊᑕᑎᑦᑎᐱᐅᑦ ᑕᑎᑎᑦ ᐊᑕᑎᑦᑎᐱᐅᑦ ᐊᑕᑎᑦᑎᐱᐅᑦ ᐊᑕᑎᑦᑎᐱᐅᑦ ᐊᑕᑎᑦᑎᐱᐅᑦ ᐊᑕᑎᑦᑎᐱᐅᑦ ᐊᑕᑎᑦᑎᐱᐅᑦ.

MISSION

Through avatimik kamattiarniq (environmental stewardship), DOE in partnership with others protects the environment (land, air, water), parks and wildlife by promoting the sustainable use of these renewable resources.

ᐱᑦᑎᑦᑎᑦᑎᑦᑎᑦ ᐱᑦᑎᑦᑎᑦᑎᑦᑎᑦ
DETAIL OF EXPENDITURES

	ᐱᑦᑎᑦᑎᑦᑎᑦᑎᑦ ᐱᑦᑎᑦᑎᑦᑎᑦᑎᑦ	ᐱᑦᑎᑦᑎᑦᑎᑦᑎᑦ ᐱᑦᑎᑦᑎᑦᑎᑦᑎᑦ	ᐱᑦᑎᑦᑎᑦᑎᑦᑎᑦ ᐱᑦᑎᑦᑎᑦᑎᑦᑎᑦ	ᐱᑦᑎᑦᑎᑦᑎᑦᑎᑦ ᐱᑦᑎᑦᑎᑦᑎᑦᑎᑦ
	2007-2008 Capital Estimates (\$000)	2006-2007 Revised Estimates (\$000)	2006-2007 Capital Estimates (\$000)	2005-2006 Actual Expenditures (\$000)
ᐱᑦᑎᑦᑎᑦᑎᑦᑎᑦ ᐱᑦᑎᑦᑎᑦᑎᑦᑎᑦ	Capital Expenditures			
ᑎᑦᑎᑦᑎᑦᑎᑦ ᐱᑦᑎᑦᑎᑦᑎᑦᑎᑦ	-	-	-	-
ᑎᑦᑎᑦᑎᑦᑎᑦ ᐱᑦᑎᑦᑎᑦᑎᑦ	2,025	4,445	2,230	1,440
ᑎᑦᑎᑦᑎᑦᑎᑦ ᐱᑦᑎᑦᑎᑦᑎᑦᑎᑦ	-	-	-	-
ᑎᑦᑎᑦᑎᑦᑎᑦ ᐱᑦᑎᑦᑎᑦᑎᑦᑎᑦ	2,025	4,445	2,230	1,440

ᐱᑦᑎᑦᑎᑦᑎᑦᑎᑦ ᐱᑦᑦᑦᑎᑦᑎᑦᑎᑦᑎᑦ
PROGRAM DEVELOPMENT

ᐱᑦᑎᑦᑎᑦᑎᑦᑎᑦ ᐱᑦᑎᑦᑎᑦᑎᑦᑎᑦ	ᐱᑦᑎᑦᑎᑦᑎᑦᑎᑦ ᐱᑦᑎᑦᑎᑦᑎᑦᑎᑦ	ᐱᑦᑎᑦᑎᑦᑎᑦᑎᑦ ᐱᑦᑎᑦᑎᑦᑎᑦᑎᑦ	ᐱᑦᑎᑦᑎᑦᑎᑦᑎᑦ ᐱᑦᑎᑦᑎᑦᑎᑦᑎᑦ
ᐱᑦᑎᑦᑎᑦᑎᑦᑎᑦ ᐱᑦᑎᑦᑎᑦᑎᑦᑎᑦ	ᐱᑦᑎᑦᑎᑦᑎᑦᑎᑦᑎᑦ ᐱᑦᑎᑦᑎᑦᑎᑦᑎᑦᑎᑦ	ᐱᑦᑎᑦᑎᑦᑎᑦᑎᑦᑎᑦ ᐱᑦᑎᑦᑎᑦᑎᑦᑎᑦᑎᑦ	ᐱᑦᑎᑦᑎᑦᑎᑦᑎᑦᑎᑦ ᐱᑦᑎᑦᑎᑦᑎᑦᑎᑦᑎᑦ
ᐱᑦᑎᑦᑎᑦᑎᑦᑎᑦ ᐱᑦᑎᑦᑎᑦᑎᑦᑎᑦ	ᐱᑦᑎᑦᑎᑦᑎᑦᑎᑦᑎᑦ ᐱᑦᑎᑦᑎᑦᑎᑦᑎᑦᑎᑦ	ᐱᑦᑎᑦᑎᑦᑎᑦᑎᑦᑎᑦ ᐱᑦᑎᑦᑎᑦᑎᑦᑎᑦᑎᑦ	ᐱᑦᑎᑦᑎᑦᑎᑦᑎᑦᑎᑦ ᐱᑦᑎᑦᑎᑦᑎᑦᑎᑦᑎᑦ
ᐱᑦᑎᑦᑎᑦᑎᑦᑎᑦ ᐱᑦᑎᑦᑎᑦᑎᑦᑎᑦ	ᐱᑦᑎᑦᑎᑦᑎᑦᑎᑦᑎᑦ ᐱᑦᑎᑦᑎᑦᑎᑦᑎᑦᑎᑦ	ᐱᑦᑎᑦᑎᑦᑎᑦᑎᑦᑎᑦ ᐱᑦᑎᑦᑎᑦᑎᑦᑎᑦᑎᑦ	ᐱᑦᑎᑦᑎᑦᑎᑦᑎᑦᑎᑦ ᐱᑦᑎᑦᑎᑦᑎᑦᑎᑦᑎᑦ
ᑕᑦᑎᑦᑎᑦ ᐱᑦᑎᑦᑎᑦ			
Tangible Assets			
ᐱᑦᑎᑦᑎᑦᑎᑦᑎᑦ			
Kivalliq Region			
ᐱᑦᑎᑦᑎᑦᑎᑦᑎᑦ			
Chesterfield Inlet			
511046	ᐱᑦᑎᑦᑎᑦᑎᑦᑎᑦᑎᑦ ᐱᑦᑎᑦᑎᑦᑎᑦᑎᑦᑎᑦᑎᑦ Wildlife Office Replacement	50	742 -
ᐱᑦᑎᑦᑎᑦᑎᑦᑎᑦ			
Whale Cove			
511047	ᐱᑦᑎᑦᑎᑦᑎᑦᑎᑦᑎᑦ ᐱᑦᑎᑦᑎᑦᑎᑦᑎᑦᑎᑦᑎᑦ Wildlife Office Replacement	50	718 -
ᐱᑦᑎᑦᑎᑦᑎᑦᑎᑦᑎᑦ ᐱᑦᑎᑦᑎᑦᑎᑦᑎᑦᑎᑦ		100	- -
ᐱᑦᑎᑦᑎᑦᑎᑦᑎᑦᑎᑦ			
Kitikmeot Region			
ᐱᑦᑎᑦᑎᑦᑎᑦᑎᑦᑎᑦ			
Cambridge Bay			
513003	ᐱᑦᑎᑦᑎᑦᑎᑦᑎᑦᑎᑦ ᐱᑦᑎᑦᑎᑦᑎᑦᑎᑦᑎᑦᑎᑦ Wildlife Office Replacement	775	114 -
ᐱᑦᑎᑦᑎᑦᑎᑦᑎᑦᑎᑦᑎᑦ ᐱᑦᑎᑦᑎᑦᑎᑦᑎᑦᑎᑦᑎᑦ		775	- -
ᐱᑦᑎᑦᑎᑦᑎᑦᑎᑦᑎᑦᑎᑦ ᐱᑦᑎᑦᑎᑦᑎᑦᑎᑦᑎᑦᑎᑦ		2,025	- -
Total Tangible Assets			





ᓄᓇᓕᓄᓐ ᓂᓴᓂᓄᓐ
ᐱᓐᓕᓕᓂᓄᓐ



COMMUNITY AND
GOVERNMENT
SERVICES

ሪፖርት ለግብርና
 ግብርና

ርግጠኛ ለግብርና

ግብርና ለግብርና ለግብርና
 ለግብርና ለግብርና ለግብርና

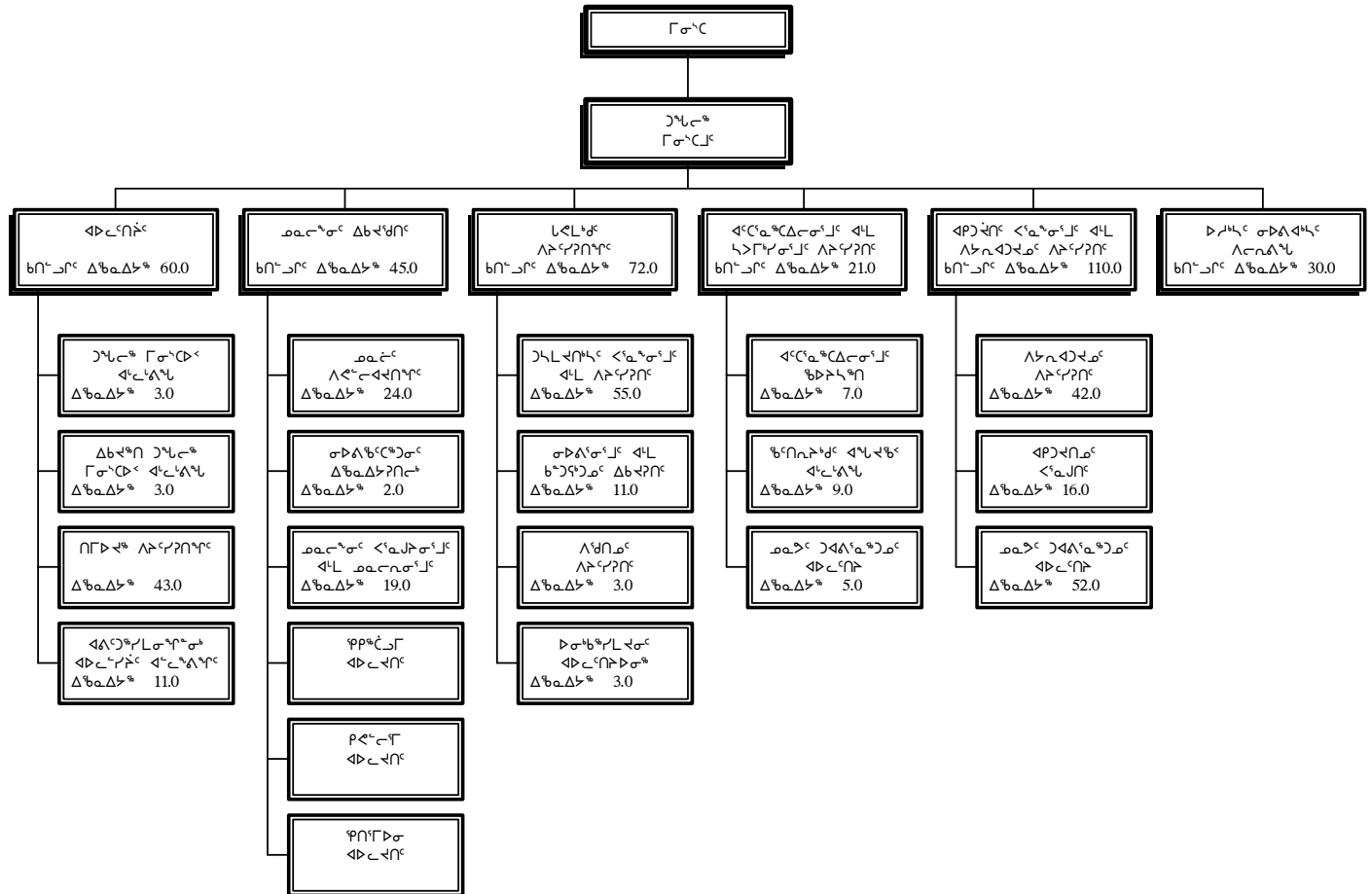
ግብርና ለግብርና

ግብርና ለግብርና

ግብርና ለግብርና

ግብርና ለግብርና ለግብርና
 ለግብርና ለግብርና

የግብርና ለግብርና ለግብርና



ግብርና ለግብርና ለግብርና ለግብርና
 CAPITAL PLANNING AND TECHNICAL SERVICES

ግብርና ቁጥር Project Number	ግብርና ዝርዝር Detail of Capital	ግብርና ለግብርና ለግብርና 2007-2008 Capital Estimates (\$000)	ግብርና ለግብርና ለግብርና 2006-2007 Prior Year Cost (\$000)	ግብርና ለግብርና ለግብርና 2008-2012 Capital Plan (\$000)
ግብርና ለግብርና ለግብርና Grants and Contributions				
ግብርና ለግብርና ለግብርና Qikiqtaaluk Region				
ግብርና ለግብርና ለግብርና Iqaluit				
507031	ግብርና ለግብርና ለግብርና ለግብርና GN-Iqaluit Contribution Agreement	4,000	4,000	9,600
	ግብርና ለግብርና ለግብርና Total Qikiqtaaluk Region	4,000	-	-
	ግብርና ለግብርና ለግብርና ለግብርና Total Grants and Contributions	4,000	-	-
ግብርና ለግብርና ለግብርና Tangible Assets				
ግብርና ለግብርና ለግብርና ለግብርና Headquarters Region				
ግብርና ለግብርና ለግብርና ለግብርና Nunavut Various				
514150	ግብርና ለግብርና ለግብርና ለግብርና Small Capital (\$300,000 or less)	3,895	-	15,580
	ግብርና ለግብርና ለግብርና ለግብርና Total Headquarters Region	3,895	-	-
ግብርና ለግብርና ለግብርና ለግብርና Qikiqtaaluk Region				
ግብርና ለግብርና ለግብርና ለግብርና Arctic Bay				
514151	ግብርና ለግብርና ለግብርና ለግብርና Community Hall	200	-	1,600

ᐱᓱᓕᓱᓕᓕᓂᓂᓪᓗ ᐱᓱᓕᓱᓕᓕᓂᓂᓪᓗ ᐱᓱᓕᓱᓕᓕᓂᓂᓪᓗ
CAPITAL PLANNING AND TECHNICAL SERVICES

ᓱᓱᓕᓱᓕᓕᓂᓂᓪᓗ ᐱᓱᓕᓱᓕᓕᓂᓂᓪᓗ	ᐱᓱᓕᓱᓕᓕᓂᓂᓪᓗ Detail of Capital	ᐱᓱᓕᓱᓕᓕᓂᓂᓪᓗ 2007-2008 Capital Estimates (\$000)	ᐱᓱᓕᓱᓕᓕᓂᓂᓪᓗ 2006-2007 Prior Year Cost (\$000)	ᐱᓱᓕᓱᓕᓕᓂᓂᓪᓗ 2008-2012 Capital Plan (\$000)
ᓕᓱᓱᓕᓕ ᓱᓱᓕᓱᓕᓂᓂᓪᓗ Tangible Assets				
ᓱᓱᓕᓱᓕᓂᓂᓪᓗ Cape Dorset				
514152	ᓱᓱᓕᓱᓕᓂᓂᓪᓗ ᓱᓱᓕᓱᓕᓂᓂᓪᓗ Repairs to Arena	150	-	-
ᓱᓱᓕᓱᓕᓂᓂᓪᓗ Pond Inlet				
507074	ᓄᓇᓕᓱᓕ ᓱᓱᓕᓱᓕᓂᓂᓪᓗ Community Hall	400	1,020	-
ᓱᓱᓕᓱᓕᓂᓂᓪᓗ Qikiqtarjuaq				
507054	ᓄᓇᓕᓱᓕ ᓱᓱᓕᓱᓕᓂᓂᓪᓗ ᓱᓱᓕᓱᓕᓂᓂᓪᓗ Municipal Services Evaluation	500	1,102	-
ᓱᓱᓕᓱᓕᓂᓂᓪᓗ Resolute Bay				
507075	ᓱᓱᓕᓱᓕᓂᓂᓪᓗ ᓱᓱᓕᓱᓕᓂᓂᓪᓗ ᓱᓱᓕᓱᓕᓂᓂᓪᓗ Sewage and Water Works	666	756	102
ᓱᓱᓕᓱᓕᓂᓂᓪᓗ Sanikiluaq				
514153	ᓱᓱᓕᓱᓕᓂᓂᓪᓗ ᓱᓱᓕᓱᓕᓂᓂᓪᓗ ᓱᓱᓕᓱᓕᓂᓂᓪᓗ ᓱᓱᓕᓱᓕᓂᓂᓪᓗ Repair of 3-Bay Garage and Two 2-Bay Garages	350	-	-
ᓱᓱᓕᓱᓕᓂᓂᓪᓗ ᓱᓱᓕᓱᓕᓂᓂᓪᓗ Total Qikiqtaaluk Region		2,266	-	-

ᐱᓚᓕᓂᓄᓂᓂᓄᓗ ᐱᓚᓕᓂᓄᓂᓂᓄᓗ ᐱᓚᓕᓂᓄᓂᓂᓄᓗ
CAPITAL PLANNING AND TECHNICAL SERVICES

ᓂᓚᓕᓂᓄᓂᓂᓄᓗ ᐱᓚᓕᓂᓄᓂᓂᓄᓗ Project Number	ᐱᓚᓕᓂᓄᓂᓂᓄᓗ Detail of Capital	ᐱᓚᓕᓂᓄᓂᓂᓄᓗ ᐱᓚᓕᓂᓄᓂᓂᓄᓗ 2007-2008 Capital Estimates (\$000)	ᐱᓚᓕᓂᓄᓂᓂᓄᓗ ᐱᓚᓕᓂᓄᓂᓂᓄᓗ 2006-2007 Prior Year Cost (\$000)	ᐱᓚᓕᓂᓄᓂᓂᓄᓗ ᐱᓚᓕᓂᓄᓂᓂᓄᓗ 2008-2012 Capital Plan (\$000)
ᓂᓚᓕᓂᓄᓂᓂᓄᓗ ᐱᓚᓕᓂᓄᓂᓂᓄᓗ				
Tangible Assets				
ᓂᓚᓕᓂᓄᓂᓂᓄᓗ				
Kivalliq Region				
ᓂᓚᓕᓂᓄᓂᓂᓄᓗ				
Rankin Inlet				
514057	ᓂᓚᓕᓂᓄᓂᓂᓄᓗ ᓂᓚᓕᓂᓄᓂᓂᓄᓗ Sewage Treatment Plant	2,200	750	2,425
514112	ᓄᓚᓂᓄᓂᓂᓄᓗ Vehicle	40	40	160
ᓂᓚᓕᓂᓄᓂᓂᓄᓗ				
Repulse Bay				
514154	ᓂᓚᓕᓂᓄᓂᓂᓄᓗ ᓄᓚᓂᓄᓂᓂᓄᓗ 4 Bay Parking Garage	150	-	1,450
ᓂᓚᓕᓂᓄᓂᓂᓄᓗ				
Whale Cove				
514155	ᓄᓚᓂᓄᓂᓂᓄᓗ ᐱᓚᓕᓂᓄᓂᓂᓄᓗ Community Hall	150	-	1,600
ᓂᓚᓕᓂᓄᓂᓂᓄᓗ ᓂᓚᓕᓂᓄᓂᓂᓄᓗ		2,540	-	-
ᓂᓚᓕᓂᓄᓂᓂᓄᓗ				
Kitikmeot Region				
ᓂᓚᓕᓂᓄᓂᓂᓄᓗ				
Gjoa Haven				
507544	ᓄᓚᓂᓄᓂᓂᓄᓗ ᐱᓚᓕᓂᓄᓂᓂᓄᓗ Community Hall	1,000	1,250	500

ᓂᓴᓴᓂᓂᓂ ᓂᓴᓴᓂᓂᓂ ᓂᓴᓴ ᓂᓴᓴᓂᓂᓂᓂ ᓂᓴᓴᓂᓂᓂ
CAPITAL PLANNING AND TECHNICAL SERVICES

ᓂᓴᓴᓂᓂᓂᓂ ᓂᓴᓴᓂᓂᓂᓂ Project Number	ᓂᓴᓴᓂᓂᓂ ᓄᓂᓄᓂᓂᓂᓂᓂ	ᓂᓴᓴᓂᓂᓂᓂ ᓂᓴᓴᓂᓂᓂᓂᓂ 2007-2008 Capital Estimates (\$000)	ᓂᓴᓴᓂᓂᓂᓂ ᓂᓴᓴᓂᓂᓂᓂᓂ 2006-2007 Prior Year Cost (\$000)	ᓂᓴᓴᓂᓂᓂᓂ ᓂᓴᓴᓂᓂᓂᓂᓂ 2008-2012 Capital Plan (\$000)
ᓂᓴᓴᓂᓂᓂ ᓂᓴᓴᓂᓂᓂ Tangible Assets				
ᓂᓴᓴᓂᓂᓂ Kugaaruk				
514156	ᓄᓇᓴᓂᓂᓂᓂᓂᓂ ᓂᓴᓴᓂᓂᓂᓂᓂᓂ Garage Renovations	25	-	350
ᓂᓴᓴᓂᓂᓂᓂᓂ Kugluktuk				
507537	ᓂᓴᓴᓂᓂᓂᓂᓂ Sewage Lagoon	1,000	100	-
507546	ᓂᓴᓴᓂᓂᓂᓂᓂ ᓂᓴᓴᓂᓂᓂᓂᓂᓂ Water Treatment Plant	1,000	250	450
514115	ᓂᓴᓴᓂᓂᓂᓂᓂ ᓂᓴᓴᓂᓂᓂᓂ Hamlet Office	300	100	2,700
ᓂᓴᓴᓂᓂᓂᓂ ᓂᓴᓴᓂᓂᓂᓂᓂ Total Kitikmeot Region		3,325	-	-
ᓂᓴᓴᓂᓂᓂᓂ ᓂᓴᓴᓂᓂᓂ ᓂᓴᓴᓂᓂᓂᓂ Total Tangible Assets		12,026	-	-

ᓂᓇᓱᓂᓂᓂ ᓱᓕᓂ ᓇᓱᓂᓂᓂ

ᓕᓇ ᓱᓕᓂᓂᓂ ᓱᓗᓕᓂᓂ, ᓂᓇᓱᓂᓂᓂᓂᓂᓂ, ᓂᓇᓱᓂᓂᓂᓂᓂᓂᓂ ᓱᓕᓂ ᓂᓇᓱᓂᓂᓂᓂᓂᓂᓂ ᓂᓇᓱᓂᓂᓂᓂᓂ ᓱᓕᓂᓂᓂᓂ ᓱᓕᓂᓂᓂᓂ ᓱᓕᓂᓂᓂᓂ ᓂᓇᓱᓂᓂᓂᓂᓂ ᓱᓕᓂᓂᓂᓂᓂᓂ. ᓱᓕᓂᓂᓂ ᓂᓇᓱᓂᓂᓂᓂᓂᓂᓂᓂ ᓱᓕᓂᓂᓂᓂᓂ ᓱᓕᓂᓂᓂᓂᓂᓂᓂᓂᓂ ᓂᓇᓱᓂᓂᓂᓂᓂᓂᓂᓂ ᓱᓕᓂᓂᓂᓂᓂᓂᓂᓂᓂᓂ.

PETROLEUM PRODUCTS DIVISION

This branch acquires, transports, stores and distributes petroleum products to those communities in Nunavut that are not serviced by the private sector. The branch ensures that petroleum products are stored and distributed in an effective, efficient and environmentally responsible manner.

		ᓂᓇᓱᓂᓂᓂ ᓂᓇᓱᓂᓂᓂᓂ	ᓂᓇᓱᓂᓂᓂᓂᓂ ᓂᓇᓱᓂᓂᓂᓂᓂ	ᓂᓇᓱᓂᓂᓂᓂᓂ ᓂᓇᓱᓂᓂᓂᓂᓂ	ᓂᓇᓱᓂᓂᓂᓂᓂᓂᓂ ᓂᓇᓱᓂᓂᓂᓂᓂᓂᓂ
		2007-2008 Capital Estimates (\$000)	2006-2007 Revised Estimates (\$000)	2006-2007 Capital Estimates (\$000)	2005-2006 Actual Expenditures (\$000)
ᓂᓇᓱᓂᓂᓂᓂᓂᓂ ᓂᓇᓱᓂᓂᓂᓂᓂ	Capital Expenditures				
ᓂᓇᓱᓂᓂᓂᓂᓂᓂ ᓂᓇᓱᓂᓂᓂᓂᓂᓂ	Grants and Contributions	-	-	-	-
ᓂᓇᓱᓂᓂᓂᓂᓂᓂ ᓂᓇᓱᓂᓂᓂᓂᓂᓂ	Tangible Assets	550	6,922	4,520	5,381
ᓂᓇᓱᓂᓂᓂᓂᓂᓂᓂ ᓂᓇᓱᓂᓂᓂᓂᓂᓂᓂ	Computer Hardware and Software	-	-	-	-
ᓂᓇᓱᓂᓂᓂᓂᓂᓂ ᓂᓇᓱᓂᓂᓂᓂᓂᓂ	Total Capital Expenditures	550	6,922	4,520	5,381





ᐱᑦᑦᑦᑦᑦᑦᑦᑦᑦᑦᑦᑦᑦᑦ
ᐱᑦᑦᑦᑦᑦᑦᑦᑦᑦᑦᑦᑦᑦᑦ



ECONOMIC
DEVELOPMENT
AND
TRANSPORTATION

ᐱᓇᓇᓇᓇᓇᓇᓇᓇ ᐱᓇᓇᓇᓇᓇᓇᓇᓇ
DETAIL OF EXPENDITURES

	ᐱᓇᓇᓇᓇᓇᓇᓇ ᐱᓇᓇᓇᓇᓇᓇᓇ	ᐱᓇᓇᓇᓇᓇᓇᓇᓇ ᐱᓇᓇᓇᓇᓇᓇᓇ	ᐱᓇᓇᓇᓇᓇᓇᓇᓇ ᐱᓇᓇᓇᓇᓇᓇᓇ	ᓇᓇᓇᓇᓇᓇᓇᓇ ᐱᓇᓇᓇᓇᓇᓇᓇᓇᓇᓇ
	2007-2008 Capital Estimates (\$000)	2006-2007 Revised Estimates (\$000)	2006-2007 Capital Estimates (\$000)	2005-2006 Actual Expenditures (\$000)
ᐱᓇᓇᓇᓇᓇᓇᓇᓇ ᐱᓇᓇᓇᓇᓇᓇᓇᓇ				
ᐱᓇᓇᓇᓇᓇᓇᓇᓇ ᐱᓇᓇᓇᓇᓇᓇᓇᓇᓇ	Capital Expenditures			
ᐱᓇᓇᓇᓇᓇᓇᓇᓇ ᐱᓇᓇᓇᓇᓇᓇᓇᓇ	Grants and Contributions	1,575	125	248
ᐱᓇᓇᓇᓇᓇᓇᓇᓇ ᐱᓇᓇᓇᓇᓇᓇᓇᓇ	Tangible Assets	11,970	11,601	1,798
ᓇᓇᓇᓇᓇᓇᓇᓇᓇ ᓇᓇᓇᓇᓇᓇᓇᓇᓇᓇ	Computer Hardware and Software	-	-	-
ᓇᓇᓇᓇᓇᓇᓇᓇᓇ ᐱᓇᓇᓇᓇᓇᓇᓇᓇᓇ ᐱᓇᓇᓇᓇᓇᓇᓇᓇᓇ	Total Capital Expenditures	13,545	11,726	2,046

ᐃᓄᓄᓕᑦᑦᑦᑦᑦᑦ

ᐃᑦᑦᑦᑦᑦᑦ ᑦᑦᑦᑦᑦᑦ ᑦᑦᑦᑦᑦᑦ ᐃᓄᓄᓕᑦᑦᑦᑦᑦᑦ ᐱᓄᑦᑦᑦ ᐃᓄᓄᓕᑦᑦᑦᑦᑦᑦ ᑦᑦᑦᑦᑦᑦᑦ ᑦᑦᑦᑦᑦᑦ ᐃᓄᓄᓕᑦᑦᑦᑦᑦ ᐃᑦᑦᑦᑦᑦᑦ ᐃᑦᑦᑦᑦᑦᑦ ᐃᑦᑦᑦᑦᑦᑦ ᐃᑦᑦᑦᑦᑦᑦ ᐱᓕᑦᑦᑦᑦᑦᑦᑦ ᑦᑦᑦᑦᑦᑦᑦᑦᑦᑦᑦ.

TRANSPORTATION

The Assistant Deputy Minister of Transportation has the overall responsibility for transportation operations and planning and the associated divisional directors.

	ᐃᑦᑦᑦᑦᑦᑦ ᐃᑦᑦᑦᑦᑦᑦᑦ	ᑦᑦᑦᑦᑦᑦᑦᑦ ᐃᑦᑦᑦᑦᑦᑦᑦ	ᐃᑦᑦᑦᑦᑦᑦᑦ ᐃᑦᑦᑦᑦᑦᑦᑦ	ᑦᑦᑦᑦᑦᑦᑦ ᐃᑦᑦᑦᑦᑦᑦᑦᑦᑦ
	2007-2008 Capital Estimates (\$000)	2006-2007 Revised Estimates (\$000)	2006-2007 Capital Estimates (\$000)	2005-2006 Actual Expenditures (\$000)
ᐃᑦᑦᑦᑦᑦᑦᑦ ᐃᑦᑦᑦᑦᑦᑦᑦ	Capital Expenditures			
ᑦᑦᑦᑦᑦᑦ ᐃᑦᑦᑦᑦᑦᑦᑦᑦ	1,575	-	100	148
ᑦᑦᑦᑦᑦᑦ ᐱᓄᑦᑦᑦ	11,970	11,601	7,726	1,594
ᓄᑦᑦᑦᑦᑦᑦᑦ ᓄᑦᑦᑦᑦᑦᑦᑦᑦ ᑦᑦᑦᑦᑦᑦᑦᑦᑦᑦ	-	-	-	-
ᑦᑦᑦᑦᑦᑦᑦ ᐃᑦᑦᑦᑦᑦᑦᑦ ᐃᑦᑦᑦᑦᑦᑦᑦ	13,545	11,601	7,826	1,742

ᐱᓐᓐᓐᓐᓐᓐᓐ
TRANSPORTATION

ᐱᓕᓕᓐᓐᓐᓐᓐᓐ ᐱᓐᓐᓐᓐᓐ	ᐱᓐᓐᓐᓐᓐᓐ ᓐᓐᓐᓐᓐᓐᓐᓐ	ᐱᓐᓐᓐᓐᓐ ᐱᓐᓐᓐᓐᓐᓐ 2007-2008 Capital Estimates (\$000)	ᐱᓐᓐᓐᓐᓐ ᐱᓐᓐᓐᓐᓐᓐ 2006-2007 Prior Year Cost (\$000)	ᐱᓐᓐᓐᓐ ᐱᓐᓐᓐᓐᓐ 2008-2012 Capital Plan (\$000)
Project Number	Detail of Capital	Capital Estimates (\$000)	Prior Year Cost (\$000)	Capital Plan (\$000)
ᓐᓐᓐᓐᓐᓐ ᐱᓐᓐᓐᓐᓐ				
Grants and Contributions				
ᐱᓐᓐᓐᓐᓐᓐᓐᓐᓐ				
Headquarters Region				
ᓐᓐᓐᓐᓐ - ᐱᓐᓐᓐᓐᓐ				
Nunavut - Various				
507732	ᐱᓐᓐᓐᓐ Access Roads	500	-	3,000
	ᐱᓐᓐᓐᓐ ᓐᓐᓐᓐᓐᓐᓐᓐᓐ ᓐᓐᓐᓐᓐ Small Craft Harbour Contribution	1,000	-	4,000
ᓐᓐᓐᓐᓐ ᐱᓐᓐᓐᓐᓐᓐᓐᓐ		1,500	-	-
ᓐᓐᓐᓐᓐᓐᓐ				
Kitikmeot Region				
ᓐᓐᓐᓐᓐ				
Bathurst Inlet				
507710	ᓐᓐᓐᓐᓐᓐ ᓐᓐᓐᓐᓐᓐᓐᓐᓐᓐ ᐱᓐᓐᓐᓐᓐᓐᓐᓐ Bathurst Road and Port Study	75	-	-
ᓐᓐᓐᓐᓐ ᐱᓐᓐᓐᓐᓐᓐᓐ		75	-	-
ᓐᓐᓐᓐᓐ ᓐᓐᓐᓐᓐᓐ ᐱᓐᓐᓐᓐᓐᓐ		1,575	-	-
Total Grants and Contributions		1,575	-	-
ᓐᓐᓐᓐᓐ ᐱᓐᓐᓐᓐ ᐱᓐᓐᓐᓐ				
Tangible Assets				
ᐱᓐᓐᓐᓐᓐᓐᓐᓐᓐ				
Headquarters Region				
ᓐᓐᓐᓐᓐ - ᐱᓐᓐᓐᓐᓐ				
Nunavut - Various				
	ᓐᓐᓐᓐ ᐱᓐᓐᓐᓐ (\$300,000 ᓐᓐᓐᓐᓐ ᓐᓐᓐᓐ)	1,200	-	4,800
	Small Capital (\$300,000 or less)			
	ᐱᓐᓐᓐᓐᓐᓐᓐᓐᓐ ᐱᓐᓐᓐᓐ	800	-	-
	Canadian Drivers Licence Agreement			
ᓐᓐᓐᓐᓐ ᐱᓐᓐᓐᓐᓐᓐᓐᓐ		2,000	-	-





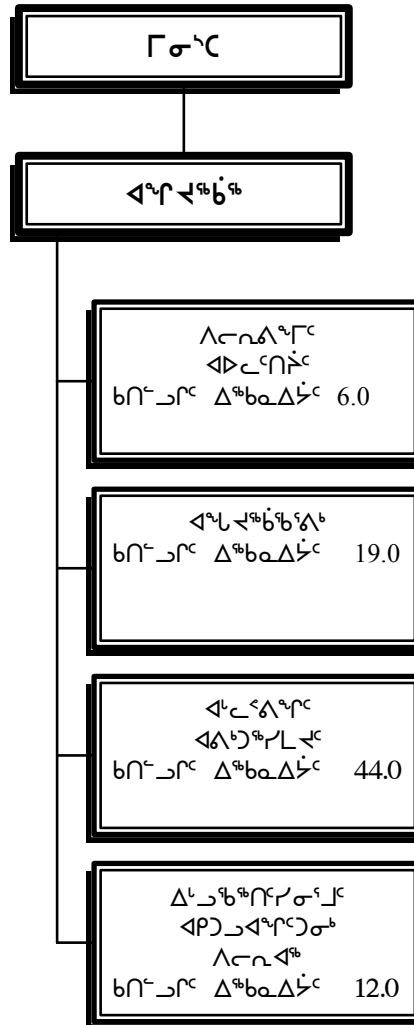
ᑎᓄᓐᓂᓐ ᑕᓄᓐ ᑕᓄᓐ ᑕᓄᓐ ᑕᓄᓐ

ᐃᓐᓐᓐ ᐃᓐᓐᓐ
 ᑦᓐᓐᓐ

ᐱᓐ ᓐᓐᓐ
 ᐃᓐᓐᓐᓐᓐᓐ

ᐃᓐᓐᓐᓐᓐ ᓐᓐᓐᓐ
 ᐃᓐᓐᓐᓐᓐᓐ ᓐᓐᓐᓐ

ᐱᓐᓐᓐᓐᓐᓐᓐᓐ ᓄᓄᓄᓄᓐᓐᓐᓐᓐ

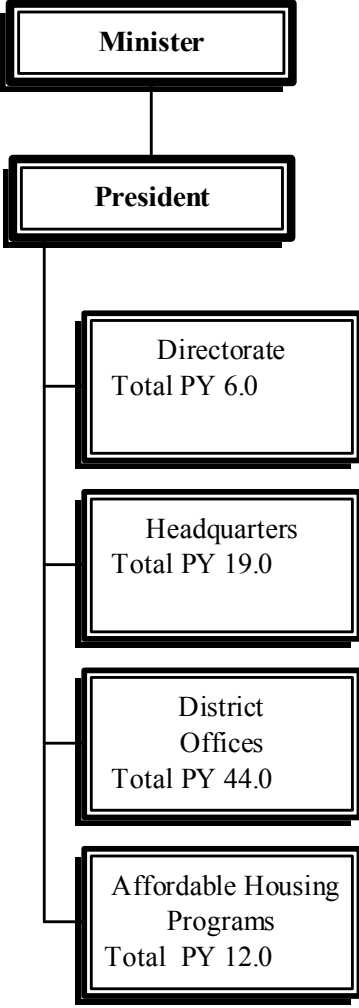


Olayuk Akesuk
Minister

Peter Scott
President

Abraham Tagalik
Vice President

ACCOUNTING STRUCTURE CHART



ᓄᓇᓂᓄᓐ ᐃᓕᓂᓂᓄᓐᓄᓐᓄᓐ

NUNAVUT HOUSING CORPORATION

	ᐃᓂᓂᓄᓐ ᐃᓂᓂᓄᓐᓄᓐ	ᐃᓂᓂᓄᓐ ᐃᓂᓂᓄᓐᓄᓐ	ᐃᓂᓂᓄᓐ ᐃᓂᓂᓄᓐᓄᓐ
ᐃᓂᓂᓄᓐ ᓄᓂᓂᓄᓐᓄᓐᓄᓐ Detail of Capital	2007-2008 Capital Estimates (\$000)	2006-2007 Prior Year Cost (\$000)	2008-2012 Capital Plan (\$000)
ᓂᓂᓂᓄᓐ ᐃᓂᓂᓄᓐᓄᓐ Grants and Contributions			
ᐃᓂᓂᓄᓐᓄᓐᓄᓐ Headquarters Region			
ᓄᓇᓂᓄᓐ - ᓄᓂᓂᓄᓐᓄᓐ Nunavut - Various			
ᐃᓂᓂᓄᓐ ᐃᓂᓂᓄᓐᓄᓐ	1,000	1,000	4,000
ᐃᓂᓂᓄᓐ ᐃᓂᓂᓄᓐᓄᓐ / ᐃᓂᓂᓄᓐᓄᓐ - ᐃᓂᓂᓄᓐᓄᓐ	500	-	2,000
ᐃᓂᓂᓄᓐ ᐃᓂᓂᓄᓐᓄᓐ ᐃᓂᓂᓄᓐ ᐃᓂᓂᓄᓐᓄᓐ	2,500	-	10,000
ᐃᓂᓂᓄᓐ ᐃᓂᓂᓄᓐᓄᓐ (\$300,000 ᐃᓂᓂᓄᓐᓄᓐ ᓂᓂᓄᓐ)	700	709	2,800
ᓂᓂᓂᓄᓐ ᐃᓂᓂᓄᓐᓄᓐᓄᓐ Total Headquarters Region	4,700	-	-
ᓂᓂᓂᓄᓐᓄᓐᓄᓐ Qikiqtaaluk Region			
ᐃᓂᓂᓄᓐᓄᓐ Arctic Bay			
ᐃᓂᓂᓄᓐ ᐃᓂᓂᓄᓐᓄᓐ / ᐃᓂᓂᓄᓐᓄᓐ - ᓄᓇᓂᓄᓐ ᓂᓂᓄᓐ	308	260	1,069
ᐃᓂᓂᓄᓐᓄᓐᓄᓐ	1,000	-	-
ᓂᓂᓂᓄᓐᓄᓐ Cape Dorset			
ᐃᓂᓂᓄᓐ ᐃᓂᓂᓄᓐᓄᓐ / ᐃᓂᓂᓄᓐᓄᓐ - ᓄᓇᓂᓄᓐ ᓂᓂᓄᓐ	431	384	1,513

ᓄᓇᓂᓄᓐ ᐃᓕᓂᓄᓐᓂᓐᓂᓐ

NUNAVUT HOUSING CORPORATION

ᐃᓂᓂᓄᓐ ᓄᓇᓂᓄᓐᓂᓐᓂᓐ Detail of Capital	ᐃᓂᓂᓄᓐ ᐃᓂᓂᓄᓐ 2007-2008 Capital Estimates (\$000)	ᐃᓂᓂᓄᓐ ᐃᓂᓂᓄᓐ 2006-2007 Prior Year Cost (\$000)	ᐃᓂᓂᓄᓐ ᐃᓂᓂᓄᓐ 2008-2012 Capital Plan (\$000)
ᓂᓂᓂᓄᓐ ᐃᓂᓂᓄᓐ Grants and Contributions			
ᓂᓂᓂᓄᓐ Sanikiluaq			
ᓂᓂᓂᓄᓐ ᐃᓂᓂᓄᓐᓂᓐᓂᓐ / ᓂᓂᓂᓄᓐᓂᓐᓂᓐ - ᓄᓇᓂᓄᓐ ᓂᓂᓂᓄᓐ ᓂᓂᓂᓄᓐᓂᓐᓂᓐ M & I / Retrofit - GN Funds	210	191	513
ᓂᓂᓂᓄᓐᓂᓐᓂᓐ - ᓄᓇᓂᓄᓐᓂᓐᓂᓐ Qikiqtaaluk - Various			
ᓄᓂᓂᓄᓐ ᐃᓂᓂᓄᓐᓂᓐᓂᓐᓂᓐ Homeowner Programs	1,000	1,500	4,000
ᓂᓂᓂᓄᓐ ᓂᓂᓂᓄᓐᓂᓐᓂᓐ	6,258	-	-
ᓂᓂᓂᓄᓐ Kivalliq Region			
ᐃᓂᓂᓄᓐ Arviat			
ᓂᓂᓂᓄᓐ ᐃᓂᓂᓄᓐᓂᓐᓂᓐ / ᓂᓂᓂᓄᓐᓂᓐᓂᓐ - ᓄᓇᓂᓄᓐ ᓂᓂᓂᓄᓐ ᓂᓂᓂᓄᓐᓂᓐᓂᓐ M & I / Retrofit - GN Funds	378	380	1,780
ᓂᓂᓂᓄᓐᓂᓐᓂᓐ Baker Lake			
ᓂᓂᓂᓄᓐ ᐃᓂᓂᓄᓐᓂᓐᓂᓐ / ᓂᓂᓂᓄᓐᓂᓐᓂᓐ - ᓄᓇᓂᓄᓐ ᓂᓂᓂᓄᓐ ᓂᓂᓂᓄᓐᓂᓐᓂᓐ M & I / Retrofit - GN Funds	473	379	1,413
ᐃᓂᓂᓄᓐᓂᓐᓂᓐ Chesterfield Inlet			
ᓂᓂᓂᓄᓐ ᐃᓂᓂᓄᓐᓂᓐᓂᓐ / ᓂᓂᓂᓄᓐᓂᓐᓂᓐ - ᓄᓇᓂᓄᓐ ᓂᓂᓂᓄᓐ ᓂᓂᓂᓄᓐᓂᓐᓂᓐ M & I / Retrofit - GN Funds	281	188	641

ᓄᓇᓂᓄᓐ ᐃᓕᓕᓕᓐᓂᓐᓂᓐ

NUNAVUT HOUSING CORPORATION

	ᐊᓂᓂᓐ ᐊᓂᓂᓐ 2007-2008 Capital Estimates (\$000)	ᐊᓂᓂᓐ ᐊᓂᓂᓐ 2006-2007 Prior Year Cost (\$000)	ᐊᓂᓂᓐ ᐊᓂᓂᓐ 2008-2012 Capital Plan (\$000)
ᐊᓂᓂᓐ ᓄᓇᓂᓄᓐᓂᓐ Detail of Capital			
ᓂᓂᓂᓐ ᐊᓕᓕᓂᓐ Grants and Contributions			
ᓂᓂᓂᓐ Kitikmeot Region			
ᐃᓕᓕᓂᓐᓂᓐ Cambridge Bay			
ᓕᓂᓂᓐ ᐊᓂᓂᓐᓂᓐ / ᓕᓂᓂᓐᓂᓐ - ᓄᓇᓂᓐ ᓕᓂᓂᓐ ᓂᓂᓂᓐᓂᓐ M & I / Retrofit - GN Funds	420	369	1,438
ᓂᓂᓂᓐ Gjoa Haven			
ᓕᓂᓂᓐ ᐊᓂᓂᓐᓂᓐ / ᓕᓂᓂᓐᓂᓐ - ᓄᓇᓂᓐ ᓕᓂᓂᓐ ᓂᓂᓂᓐᓂᓐ M & I / Retrofit - GN Funds	321	290	1,158
ᓂᓂᓂᓐ Kugaaruk			
ᓕᓂᓂᓐ ᐊᓂᓂᓐᓂᓐ / ᓕᓂᓂᓐᓂᓐ - ᓄᓇᓂᓐ ᓕᓂᓂᓐ ᓂᓂᓂᓐᓂᓐ M & I / Retrofit - GN Funds	197	188	586
ᓂᓂᓂᓐ Kugluktuk			
ᓕᓂᓂᓐ ᐊᓂᓂᓐᓂᓐ / ᓕᓂᓂᓐᓂᓐ - ᓄᓇᓂᓐ ᓕᓂᓂᓐ ᓂᓂᓂᓐᓂᓐ M & I / Retrofit - GN Funds	444	359	1,599
ᓂᓂᓂᓐ Taloyoak			
ᓕᓂᓂᓐ ᐊᓂᓂᓐᓂᓐ / ᓕᓂᓂᓐᓂᓐ - ᓄᓇᓂᓐ ᓕᓂᓂᓐ ᓂᓂᓂᓐᓂᓐ M & I / Retrofit - GN Funds	273	251	967

ᓄᓇᓃᑦᑦ ᐃᑭᓗᓕᓂᓲᑦᑲᐅᑦ

NUNAVUT HOUSING CORPORATION

	ᐳᑦᓅᑦᑦ	ᐳᑦᓇᑭᓃᑦ	ᐳᑦᓅᑦᑦ
	ᐳᑦᓂᓃᑦᑲᓂᑦ	ᐳᑦᑦᐳᑦ ᐳᑦᓂᑦ	ᐳᑦᑭᓃᑦ
ᐳᑦᓂᓃᑦᑲᓂᑦ ᓄᓇᓇᐃᓃᐅᑦᑲᓂᑦ	2007-2008	2006-2007	2008-2012
Detail of Capital	Capital	Prior	Capital
	Estimates	Year Cost	Plan
	(\$000)	(\$000)	(\$000)
ᓅᑦᑲᓂᑦ ᐳᑦᓗᓇ ᐃᑲᑲᓲᓂᑦ			
Grants and Contributions			
ᑦᓲᓂᑦᑲᓃᑦ - ᓄᓇᓲᓃᓂᑦᑲ			
Various Kitikmeot			
ᓄᓂᑦᓂᓂᑦ ᐃᑭᓃᑦᑲᓂᓃᓂᓄᓂᑦᑲᓂᑦ	450	675	1,800
Homeowner Programs			
ᑲᓂᑦᓗᓂᑦ ᑦᓲᓂᑦᑲᓃᑦ	2,105	-	-
ᓂᓂᓄᓂᑦ ᓅᑦᑲᓂᑦ ᐳᑦᓗᓇ ᐃᑲᑲᓲᓂᑦ	15,983	-	-
Total Grants and Contributions			



ᑕᑭᑦᑕᑦᑕᑦᑕᑦ ᑕᑭᑦᑕᑦᑕᑦ
ᑕᑭᑦᑕᑦᑕᑦᑕᑦ 2007-2008



APPENDICES TO THE
CAPITAL ESTIMATES *2007-2008*

GLOSSARY

Accounting Structure Chart	Departmental structure starting with the Minister, Deputy Minister(s), Branch and Division levels consistent with the classification of accounts.
Appropriation	Authority contained in an Act to incur expenditure.
Branch	Departments are further sub-divided into Branches.
Branch Summary	Describes the major responsibilities and summarizes capital expenditures for the Branch.
Budget	An estimate of proposed expenditures for a given period and the proposed means (revenue estimates) of financing those expenditures.
Capital Asset	Physical property used in the operations of the government, and not intended for sale. Capital assets will have a useful life of one year or longer.
Capital Expenditures	Government expenditures for the purchase or construction of a capital asset; an outlay that increases the expected useful life of an existing capital asset; planning and study costs related to capital asset acquisition or construction; or grants and contributions to other agencies for the purpose of capital acquisition or construction.
Capital Lease	A lease agreement for real property where the benefits and risks have been substantially transferred to the government, even though ownership remains with the lessor.
Capital Projects	Projects established for the purchase or construction of Capital Assets. A capital project includes a purchase of land or equipment and/or the construction of a building or other facility; planning and study costs related to capital asset acquisition or construction; or grants and contributions to other agencies for the purpose of capital acquisition or construction.
Contribution	A conditional transfer of appropriated funds to a public agency, community government or other organization that is accountable to the government for the use of the funds and fulfillment of the objectives for which the funding is provided.

GLOSSARY

Department	Organizational entity, established by Cabinet to deliver programs and services within a specified mandate.
Department Summary	Describes the Mission or purpose, and summarizes the Detail of Expenditures for each Department.
Detail of Capital	A listing of the capital projects by Standard Object and geographic area within a Branch.
Estimates	The estimate of expenditures and revenues approved by the Legislative Assembly for all government departments.
Fiscal Year	A consecutive twelve-month period designated as the reporting year of a government or organization. The Government of Nunavut's fiscal year starts April 1 and ends March 31 of the following calendar year.
Grant	An unconditional transfer of appropriated funds to a public agency, group or organization for which the recipient is, with the exception of meeting the eligibility criteria for the grant, not accountable to the government.
Objects of Expenditure	<p>Votes and Items of expenditure are broken down into greater detail termed Control, Standard, and Detailed Objects of expenditure. In the Capital Estimates, expenditures are presented within three Standard Objects of Expenditure:</p> <ul style="list-style-type: none"> - Grants and Contributions - Tangible Assets - Computer Hardware and Software
Regions	Geographical sub-divisions of Nunavut for administrative purposes.
Vote	A category of expenditure according to its intended use (e.g. Vote 1- Operations and Maintenance, Vote 2 – Capital).





ᐃᓕᓕᓐᓂᓐ ᐱᓐ ᐱᓐ
INDEX

ᐱᓕᓕᓐᓂᓐ ᐱᓕᓕᓐᓂᓐ
PROJECTS BY DEPARTMENT

ᐃᓕᓕᓐᓂᓐ ᐱᓐ ᐱᓐ Introduction	III-2
ᐱᓕᓕᓐᓂᓐ ᐱᓕᓕᓐᓂᓐ ᐱᓐ ᐱᓐ Office of the Legislative Assembly	III-4
ᐱᓕᓕᓐᓂᓐ ᐱᓐ ᐱᓐ Justice	III-5
ᐱᓕᓕᓐᓂᓐ ᐱᓐ ᐱᓐ Culture, Language, Elders and Youth	III-6
ᐱᓕᓕᓐᓂᓐ ᐱᓐ ᐱᓐ Education	III-7
ᐱᓕᓕᓐᓂᓐ ᐱᓐ ᐱᓐ Health and Social Services	III-9
ᐱᓕᓕᓐᓂᓐ ᐱᓐ ᐱᓐ Environment	III-11
ᐱᓕᓕᓐᓂᓐ ᐱᓐ ᐱᓐ Community and Government Services	III-12
ᐱᓕᓕᓐᓂᓐ ᐱᓐ ᐱᓐ Economic Development and Transportation	III-16
ᐱᓕᓕᓐᓂᓐ ᐱᓐ ᐱᓐ Nunavut Housing Corporation	III-18

FIVE YEAR CAPITAL PLAN

INTRODUCTION

While subject to revision each year, the 5-Year Capital Plan provides a framework for review of the Government's future capital expenditure priorities, including planned expenditures for the forthcoming budget year, 2007-2008.

The Standing Committees reviewed the Capital Plan in September/October 2006, prior to tabling of the 2007-2008 Capital Estimates in the Legislative Assembly in November 2006.

The 5-Year Capital Plan outlines \$91.8 million in expenditures for 2007-2008, and a total of approximately \$404.8 million over the five-year Capital Plan period. Projects are arranged by department, region and community.

With the inclusion of expenditures on the Qikiqtani General Hospital in Iqaluit, the Department of Health and Social Services will receive about 10.3% of total appropriations in 2007-2008. While this facility might ultimately be leased, it is considered prudent to identify the expenditures in the 5-year Capital Plan and in the 2007-2008 Capital Estimates. Other major capital expenditures will be in the Departments of Community and Government Services (18.1%), Education (25.5%), and the Nunavut Housing Corporation with about 17.4 percent of the total in 2007-2008.

The Plan details expenditures planned primarily from Vote 2 - Capital.





ᓕᓕᓕᓕᓕ ᐱᑦᑭᓂᓕ ᐱᓕᓕᓕᓕᓕᓕ 5-Year Capital Plan	ᐱᑦᓕᓕᓕᓕᓕᓕᓕ					
	ᐱᓕᓕᓕᓕᓕ	ᐱᓕᓕᓕᓕᓕ	ᐱᑦᓕᓕᓕᓕ	ᐱᑦᓕᓕᓕᓕ	ᐱᑦᓕᓕᓕᓕ	ᐱᑦᓕᓕᓕᓕ
	2006/2007 Revised Budget	2007/08 Budget	2008/09 Planned	2009/10 Planned	2010/11 Planned	2011/12 Planned
Δᓕᓐᓂᐱᑦᓂᓕᓕᓕᓕᓕᓕ Education						
ᐱᓕᓕᓕᓕᓕᓕᓕᓕᓕ Headquarters Region						
ᓄᓕᓂᓕ - ᓄᓂᓕᓕᓕᓕᓕ Nunavut - Various						
ᓕᓕᓕᓕᓕ ᐱᓕᓕᓕᓕᓕ	300	500	500	500	500	500
Minor Projects						
ᓕᓕᓕᓕ ᐱᓕᓕᓕᓕᓕ (\$300,000 ᐱᑦᓕᓕᓕᓕᓕ ᓕᓕᓕᓕ)	-	185	185	185	185	185
Small Capital (\$300,000 or less)						
ᓕᓕᓕᓕᓕ ᐱᓕᓕᓕᓕᓕᓕᓕᓕ Total Headquarters	-	685	685	685	685	685
ᑦᓕᓕᓕᓕᓕᓕᓕᓕ Qikiqtaaluk Region						
ᓕᓕᓕᓕᓕ Cape Dorset						
ᐱᓕ ᐱᓕᓕᓕᓕᓕᓕ ᐱᓕᓕᓕᓕᓕᓕᓕ ᐱᓕᓕᓕᓕᓕᓕᓕᓕ	675	-	2,750	4,870	50	-
Peter Pitseolak School Addition						
ᐱᓕᓕᓕᓕ Iqaluit						
ᐱᓕᓕᓕᓕ ᐱᓕᓕᓕᓕᓕᓕᓕ ᓄᓕᓕᓕᓕᓕᓕᓕᓕᓕᓕᓕᓕᓕ	2,452	3,076	3,992	8,208	4,500	50
Inuksuk High School Renovation						
ᐱᓕᓕᓕᓕ ᓕᓕᓕᓕᓕᓕᓕᓕᓕᓕ ᐱᓕᓕᓕᓕᓕᓕᓕᓕ ᐱᓕᓕᓕᓕᓕᓕᓕ	9,254	50	-	-	-	-
Iqaluit NAC Student Accomodation						
ᓕᓕᓕᓕᓕ Pond Inlet						
ᓕᓕᓕᓕᓕᓕᓕᓕᓕ ᓕᓕᓕᓕᓕᓕᓕᓕᓕᓕᓕ	260	-	-	-	3,150	40
NAC CLC Replacement						
ᑦᓕᓕᓕᓕᓕᓕᓕᓕᓕ Qikiqtarjuaq						
ᐱᓕᓕᓕᓕᓕ ᐱᓕᓕᓕᓕᓕᓕᓕ ᐱᓕᓕᓕᓕᓕᓕᓕᓕᓕᓕᓕ	555	-	-	-	3,500	5,700
Inuksuit School Addition						
ᓕᓕᓕᓕᓕ Sanikiluaq						
ᓄᓕ ᐱᓕᓕᓕᓕᓕᓕᓕᓕᓕᓕ	1,082	1,000	3,800	4,800	3,900	-
New School						
ᓕᓕᓕᓕᓕ ᑦᓕᓕᓕᓕᓕᓕᓕᓕ Total Qikiqtaaluk Region	-	4,126	10,542	17,878	15,100	5,790

		ᑭᑦᑭᑦᑭᑦᑭᑦᑭᑦ					
		ᐃᑦᑦᑭᑦᑭᑦᑭᑦᑭᑦ	ᐃᑦᑦᑭᑦᑭᑦᑭᑦᑭᑦ	ᑭᑦᑭᑦᑭᑦᑭᑦᑭᑦ	ᑭᑦᑭᑦᑭᑦᑭᑦᑭᑦ	ᑭᑦᑭᑦᑭᑦᑭᑦᑭᑦ	ᑭᑦᑭᑦᑭᑦᑭᑦᑭᑦ
ᑭᑦᑦᑭᑦᑭᑦᑭᑦᑭᑦᑭᑦ 5-Year Capital Plan		2006/2007 Revised Budget	2007/08 Budget	2008/09 Planned	2009/10 Planned	2010/11 Planned	2011/12 Planned
ᑭᑦᑦᑭᑦᑭᑦᑭᑦᑭᑦᑭᑦ <i>Kivalliq Region</i>							
ᑭᑦᑦᑭᑦᑭᑦᑭᑦᑭᑦᑭᑦ <i>Coral Harbour</i>							
ᑭᑦᑦᑭᑦᑭᑦᑭᑦᑭᑦᑭᑦᑭᑦ Sakku School Renovations		4,900	3,150	50	-	-	-
ᑭᑦᑦᑭᑦᑭᑦᑭᑦᑭᑦᑭᑦᑭᑦ New School		50	-	-	-	850	9,500
ᑭᑦᑦᑭᑦᑭᑦᑭᑦᑭᑦᑭᑦᑭᑦ <i>Rankin Inlet</i>							
ᑭᑦᑦᑭᑦᑭᑦᑭᑦᑭᑦᑭᑦᑭᑦᑭᑦ NAC Student Accommodation		4,760	700	-	-	-	-
ᑭᑦᑦᑭᑦᑭᑦᑭᑦᑭᑦᑭᑦᑭᑦᑭᑦ Nunavut Trade School		820	5,500	-	-	-	-
ᑭᑦᑦᑭᑦᑭᑦᑭᑦᑭᑦᑭᑦᑭᑦᑭᑦ <i>Total Kivalliq Region</i>		-	9,350	50	-	850	9,500
ᑭᑦᑦᑭᑦᑭᑦᑭᑦᑭᑦᑭᑦᑭᑦᑭᑦ <i>Kitikmeot Region</i>							
ᑭᑦᑦᑭᑦᑭᑦᑭᑦᑭᑦᑭᑦᑭᑦᑭᑦ <i>Gjoa Haven</i>							
ᑭᑦᑦᑭᑦᑭᑦᑭᑦᑭᑦᑭᑦᑭᑦᑭᑦᑭᑦ Qikirtaq and Quqshuun School Addition		3,964	9,234	3,524	50	-	-
ᑭᑦᑦᑭᑦᑭᑦᑭᑦᑭᑦᑭᑦᑭᑦᑭᑦᑭᑦ <i>Total Kitikmeot Region</i>		-	9,234	3,524	50	-	-
ᑭᑦᑦᑭᑦᑭᑦᑭᑦᑭᑦᑭᑦᑭᑦᑭᑦᑭᑦᑭᑦ Total Education		-	23,395	14,801	18,613	16,635	15,975

ᑕᑦᑎᑦᐱᑦᐅᑦ ᐊᑦᑎᑦᐱᑦᐅᑦ ᐊᑦᑎᑦᐱᑦᐅᑦ ᐊᑦᑎᑦᐱᑦᐅᑦ	ᐊᑦᑎᑦᐱᑦᐅᑦ					
	ᐊᑦᑎᑦᐱᑦᐅᑦ	ᐊᑦᑎᑦᐱᑦᐅᑦ	ᐊᑦᑎᑦᐱᑦᐅᑦ	ᐊᑦᑎᑦᐱᑦᐅᑦ	ᐊᑦᑎᑦᐱᑦᐅᑦ	ᐊᑦᑎᑦᐱᑦᐅᑦ
	2006/2007 Revised Budget	2007/08 Budget	2008/09 Planned	2009/10 Planned	2010/11 Planned	2011/12 Planned
ᐊᑎᑦᑎᑦᐱᑦᐅᑦ	Environment					
ᐊᑦᑎᑦᐱᑦᐅᑦ	Headquarters Region					
ᐃᑦᑎᑦᐱᑦᐅᑦ - ᐃᑦᑎᑦᐱᑦᐅᑦ	Nunavut - Various					
ᐊᑎᑦᑎᑦᐱᑦᐅᑦ ᐊᑦᑎᑦᐱᑦᐅᑦ ᐊᑦᑎᑦᐱᑦᐅᑦ	48	100	100	100	100	100
Wildlife Office Renovations						
ᑕᑦᑎᑦᐱᑦᐅᑦ ᐊᑦᑎᑦᐱᑦᐅᑦ (\$300,000 ᐊᑦᑎᑦᐱᑦᐅᑦ ᐊᑦᑎᑦᐱᑦᐅᑦ)	1,748	1,000	1,000	1,000	1,000	1,000
Small Capital (\$300,000 or less)						
ᐊᑎᑦᑎᑦᐱᑦᐅᑦ ᐊᑦᑎᑦᐱᑦᐅᑦ	-	1,100	1,100	1,100	1,100	1,100
ᑕᑦᑎᑦᐱᑦᐅᑦ	Qikiqtaaluk Region					
ᑕᑦᑎᑦᐱᑦᐅᑦ	Hall Beach					
ᐊᑎᑦᑎᑦᐱᑦᐅᑦ ᐊᑦᑎᑦᐱᑦᐅᑦ ᐊᑦᑎᑦᐱᑦᐅᑦ	1,075	50	-	-	-	-
Wildlife Office Replacement						
ᐊᑎᑦᑎᑦᐱᑦᐅᑦ ᑕᑦᑎᑦᐱᑦᐅᑦ	-	50	-	-	-	-
ᑕᑦᑎᑦᐱᑦᐅᑦ	Kivalliq Region					
ᐊᑦᑎᑦᐱᑦᐅᑦ	Chesterfield Inlet					
ᐊᑎᑦᑎᑦᐱᑦᐅᑦ ᐊᑦᑎᑦᐱᑦᐅᑦ ᐊᑦᑎᑦᐱᑦᐅᑦ	742	50	-	-	-	-
Wildlife Office Replacement						
ᐊᑎᑦᑎᑦᐱᑦᐅᑦ	Whale Cove					
ᐊᑎᑦᑎᑦᐱᑦᐅᑦ ᐊᑦᑎᑦᐱᑦᐅᑦ ᐊᑦᑎᑦᐱᑦᐅᑦ	718	50	-	-	-	-
Wildlife Office Replacement						
ᐊᑎᑦᑎᑦᐱᑦᐅᑦ ᑕᑦᑎᑦᐱᑦᐅᑦ	-	100	-	-	-	-
ᑕᑦᑎᑦᐱᑦᐅᑦ	Kitikmeot Region					
ᐊᑦᑎᑦᐱᑦᐅᑦ	Cambridge Bay					
ᐊᑎᑦᑎᑦᐱᑦᐅᑦ ᐊᑦᑎᑦᐱᑦᐅᑦ ᐊᑦᑎᑦᐱᑦᐅᑦ	114	775	-	-	-	-
Wildlife Office Replacement						
ᐊᑎᑦᑎᑦᐱᑦᐅᑦ ᑕᑦᑎᑦᐱᑦᐅᑦ	-	775	-	-	-	-
ᐊᑎᑦᑎᑦᐱᑦᐅᑦ ᑕᑦᑎᑦᐱᑦᐅᑦ	-	2,025	1,100	1,100	1,100	1,100
Environment						

ᓕᓕᓴᓄᓂ ᓴᓴᓴᓄᓂ ᓴᓴᓴᓄᓂ ᓴᓴᓴᓄᓂ 5-Year Capital Plan	ᓴᓴᓴᓄᓂᓄᓗ					
	ᓴᓴᓴᓄᓂ 2006/2007 Revised Budget	ᓴᓴᓴᓄᓂ 2007/08 Budget	ᓴᓴᓴᓄᓂ 2008/09 Planned	ᓴᓴᓴᓄᓂ 2009/10 Planned	ᓴᓴᓴᓄᓂ 2010/11 Planned	ᓴᓴᓴᓄᓂ 2011/12 Planned
ᓄᓚᓕᓂ ᓕᓴᓴᓄᓂᓪᓗ ᓱᓱᓕᓴᓴᓄᓂᓄᓗ						
Community and Government Services						
ᓴᓴᓴᓄᓂᓄᓗ ᓴᓴᓴᓄᓂᓄᓗ <i>Headquarters Region</i>						
ᓄᓚᓄᓂ - ᓄᓂᓴᓴᓄᓂ <i>Nunavut - Various</i>						
ᓴᓴᓴᓄᓂ ᓴᓴᓴᓄᓂᓄᓗ (\$300,000 ᓴᓴᓴᓄᓂᓄᓗ ᓴᓴᓴᓄᓂ)	-	3,895	3,895	3,895	3,895	3,895
Small Capital (\$300,000 or less)	-	3,895	3,895	3,895	3,895	3,895
ᓴᓴᓴᓄᓂᓄᓗ ᓴᓴᓴᓄᓂᓄᓗ <i>Total Headquarters</i>	-	3,895	3,895	3,895	3,895	3,895
ᓴᓴᓴᓄᓂᓄᓗ <i>Qikiqtaaluk Region</i>						
ᓴᓴᓴᓄᓂᓄᓗ <i>Arctic Bay</i>						
ᓄᓚᓕᓴᓄᓂ ᓴᓴᓴᓄᓂᓄᓗ	-	200	1,600	-	-	-
Community Hall	-	200	1,600	-	-	-
ᓴᓴᓴᓄᓂᓄᓗ <i>Cape Dorset</i>						
ᓴᓴᓴᓄᓂᓄᓗ ᓴᓴᓴᓄᓂᓄᓗ ᓴᓴᓴᓄᓂᓄᓗ	-	150	-	-	-	-
Repairs to Arena	-	150	-	-	-	-
ᓴᓴᓴᓄᓂᓄᓗ <i>Grise Fiord</i>						
ᓴᓴᓴᓄᓂᓄᓗ ᓄᓚᓕᓂ ᓴᓴᓴᓄᓂᓄᓗ ᓴᓴᓴᓄᓂᓄᓗ	-	-	-	-	100	650
Qaggivik Community Centre Expansion	-	-	-	-	100	650
ᓴᓴᓴᓄᓂᓄᓗ <i>Hall Beach</i>						
ᓄᓚᓕᓴᓄᓂ ᓴᓴᓴᓄᓂᓄᓗ ᓴᓴᓴᓄᓂᓄᓗ ᓴᓴᓴᓄᓂᓄᓗ	-	-	100	900	-	-
Community Hall Expansion	-	-	100	900	-	-
ᓴᓴᓴᓄᓂᓄᓗ <i>Igloolik</i>						
ᓴᓴᓴᓄᓂᓄᓗ ᓄᓚᓕᓴᓄᓂ ᓴᓴᓴᓄᓂᓄᓗ	-	-	150	1,800	-	-
Replacement of Community Hall	-	-	150	1,800	-	-
ᓴᓴᓴᓄᓂᓄᓗ <i>Iqaluit</i>						
ᓕᓴᓴᓄᓂ - ᓴᓴᓴᓄᓂᓄᓗ ᓴᓴᓴᓄᓂᓄᓗ ᓴᓴᓴᓄᓂᓄᓗ	4,242	4,000	2,400	2,400	2,400	2,400
GN - Iqaluit Contribution Agreement	4,242	4,000	2,400	2,400	2,400	2,400

ᓕᓕᓂᓄᓂ ᐃᓕᓂᓄᓂ ᐃᓕᓂᓄᓂ ᐃᓕᓂᓄᓂ 5-Year Capital Plan	ᐃᓕᓂᓄᓂᓄᓂ					
	ᐃᓕᓂᓄᓂ 2006/2007 Revised Budget	ᐃᓕᓂᓄᓂ 2007/08 Budget	ᐃᓕᓂᓄᓂ 2008/09 Planned	ᐃᓕᓂᓄᓂ 2009/10 Planned	ᐃᓕᓂᓄᓂ 2010/11 Planned	ᐃᓕᓂᓄᓂ 2011/12 Planned
ᐃᓕᓂᓄᓂᓄᓂ Pangnirtung						
ᓄᓕᓂ ᓂᓄᓕᓂᓄᓂ New Gravel Source	-	-	-	-	-	500
ᓕᓂᓄᓂᓄᓂ Pond Inlet						
ᓄᓚᓕᓂᓄᓂ ᓂᓄᓂᓄᓂᓄᓂ Community Hall	1,627	400	-	-	-	-
ᓂᓄᓂᓄᓂ ᓄᓚᓂᓄᓂᓄᓂ Parking Garage-3 Bay	-	-	-	200	1,000	-
ᓂᓄᓂᓄᓂᓄᓂ Qikiqtarjuaq						
ᓄᓚᓕᓂᓄᓂ ᓂᓄᓂᓄᓂᓄᓂᓄᓂ Municipal Services	1,689	500	-	-	-	-
ᓂᓄᓂᓄᓂᓄᓂᓄᓂ Fire Hall	-	-	-	200	1,300	-
ᓄᓚᓂᓄᓂᓄᓂᓄᓂ ᓄᓚᓂᓄᓂᓄᓂᓄᓂᓄᓂ Maintenance Garage	-	-	-	-	-	200
ᓄᓚᓕᓂᓄᓂ ᐃᓕᓂᓄᓂ Municipal Office	-	-	-	400	1,600	1,000
ᓂᓄᓂᓄᓂᓄᓂ Resolute Bay						
ᓄᓂᓄᓂᓄᓂᓄᓂᓄᓂ ᓄᓂᓄᓂᓄᓂᓄᓂᓄᓂ ᐃᓕᓂᓄᓂ ᓂᓄᓂᓄᓂᓄᓂᓄᓂᓄᓂ	3,225	-	2,260	2,000	-	-
Tank Farm Capacities and Code Compliance						
ᓄᓂᓄᓂᓄᓂ ᐃᓕᓂᓄᓂ ᓂᓄᓂᓄᓂᓄᓂ	756	666	102	-	-	-
Sewage and Water Works						
ᐃᓕᓂᓄᓂᓄᓂᓄᓂ	-	-	-	200	800	500
Arena						
ᓄᓂᓄᓂᓄᓂ Sanikiluaq						
ᓄᓚᓂᓄᓂᓄᓂᓄᓂ ᓂᓄᓂᓄᓂᓄᓂᓄᓂ ᐃᓕᓂᓄᓂ ᓂᓄᓂᓄᓂ ᓄᓚᓂᓄᓂᓄᓂᓄᓂ	-	350	-	-	-	-
Repair of 3-Bay Garage and Two 2-Bay Garages						
ᓂᓄᓂᓄᓂᓄᓂ ᓄᓂᓄᓂᓄᓂᓄᓂ Total Qikiqtaaluk Region	-	6,266	6,612	8,100	7,200	5,250

ርዕረ-ጠቅላይ ልማት ልዩ ልዩ ልዩ 5-Year Capital Plan	ሰነድ ለጥያቄዎቻችን					
	2006/2007	2007/08	2008/09	2009/10	2010/11	2011/12
	Revised Budget	Budget	Planned	Planned	Planned	Planned
የጥያቄዎች ክልል Kivalliq Region						
ጠቅላይ ልማት Rankin Inlet						
ጥንቃቄና ስርዓተ-ሥራ ለጥንቃቄ ስርዓተ-ሥራ ለጥንቃቄ ስርዓተ-ሥራ	314	-	-	3,250	3,800	3,784
Tank Farm Capacities and Code Compliance						
የጥንቃቄ ጥንቃቄ	2,036	2,200	1,700	375	350	-
Sewage Treatment Plant						
መገንባት	40	40	40	40	40	40
Vehicle						
ጥንቃቄ ለጥንቃቄ ስርዓተ-ሥራ	-	-	-	-	-	500
Quarry Development						
ከጥንቃቄ ስርዓተ-ሥራ ለጥንቃቄ ስርዓተ-ሥራ	-	-	-	-	-	250
Retrofit at Arena						
ጥንቃቄ Repulse Bay						
ጥንቃቄ ስርዓተ-ሥራ ለጥንቃቄ ስርዓተ-ሥራ	-	150	1,450	-	-	-
4 - Bay Parking Garage						
መገንባት ለጥንቃቄ ስርዓተ-ሥራ	-	-	200	1,550	-	-
Community Hall						
ጥንቃቄ Whale Cove						
ጥንቃቄ ስርዓተ-ሥራ ለጥንቃቄ ስርዓተ-ሥራ	2,104	550	-	-	-	-
Tank Farm Capacities and Code Compliance						
መገንባት ለጥንቃቄ ስርዓተ-ሥራ	-	150	1,600	-	-	-
Community Hall						
ጠቅላይ ልማት የጥንቃቄዎች ክልል Total Kivalliq Region	-	3,090	4,990	5,215	4,190	4,574

ᓕᓕᓴᓄᓂ ᓄᓴᓴᓄᓂ ᓄᓴᓴᓄᓂ ᓄᓴᓴᓄᓂ 5-Year Capital Plan	ᓄᓴᓴᓄᓂᓗ ᓄᓴᓴᓄᓂᓗ ᓄᓴᓴᓄᓂᓗ ᓄᓴᓴᓄᓂᓗ ᓄᓴᓴᓄᓂᓗ ᓄᓴᓴᓄᓂᓗ					
	2006/2007 Revised Budget	2007/08 Budget	2008/09 Planned	2009/10 Planned	2010/11 Planned	2011/12 Planned
ᓴᓴᓴᓄᓂᓗ Kitikmeot Region						
ᓄᓴᓴᓄᓂᓗ Gjoa Haven						
ᓄᓴᓴᓄᓂᓗ ᓄᓴᓴᓄᓂᓗ Community Hall	1,078	1,000	500	-	-	-
ᓄᓴᓴᓄᓂᓗ Kugaaruk						
ᓄᓴᓴᓄᓂᓗ ᓄᓴᓴᓄᓂᓗ ᓄᓴᓴᓄᓂᓗ Garage Renovations	-	25	350	-	-	-
ᓄᓴᓴᓄᓂᓗ Kugluktuk						
ᓄᓴᓴᓄᓂᓗ ᓄᓴᓴᓄᓂᓗ Sewage Lagoon	868	1,000	-	-	-	-
ᓄᓴᓴᓄᓂᓗ ᓄᓴᓴᓄᓂᓗ ᓄᓴᓴᓄᓂᓗ Water Treatment Plant	561	1,000	450	-	-	-
ᓄᓴᓴᓄᓂᓗ ᓄᓴᓴᓄᓂᓗ ᓄᓴᓴᓄᓂᓗ Hamlet Office Building	100	300	2,700	-	-	-
ᓄᓴᓴᓄᓂᓗ Taloyoak						
ᓄᓴᓴᓄᓂᓗ ᓄᓴᓴᓄᓂᓗ ᓄᓴᓴᓄᓂᓗ Renovation to Community Hall	-	-	-	-	-	175
ᓄᓴᓴᓄᓂᓗ ᓄᓴᓴᓄᓂᓗ Total Kitikmeot Region	-	3,325	4,000	-	-	175
ᓄᓴᓴᓄᓂ ᓄᓴᓴᓄᓂᓗ ᓄᓴᓴᓄᓂᓗ ᓄᓴᓴᓄᓂᓗ ᓄᓴᓴᓄᓂᓗ ᓄᓴᓴᓄᓂᓗ ᓄᓴᓴᓄᓂᓗ Total Community and Government Services	-	16,576	19,497	17,210	15,285	13,894

ᑕᑦᑦᑕᑕᑕᑕ ᑖᓄᓄᓄᑕ ᑖᑦᑕᑕᑕᑕᑕ ᑕᓄᑕᑕᑕᑕ	ᑕᓄᓄᓄᑕ ᑕᓄᓄᓄᑕ ᑕᓄᓄᓄᑕ ᑕᓄᓄᓄᑕ ᑕᓄᓄᓄᑕ ᑕᓄᓄᓄᑕ					
	2006/2007	2007/08	2008/09	2009/10	2010/11	2011/12
5-Year Capital Plan	Revised	Budget	Planned	Planned	Planned	Planned
<hr/>						
ᑕᓄᓄᓄᑕ Nanisivik						
ᑕᓄᓄᓄᑕ ᑕᓄᓄᓄᑕ ᑕᓄᓄᓄᑕ Highway Upgrades	154	100	70	83	-	-
ᑕᓄᓄᓄᑕ ᑕᓄᓄᓄᑕ Total Qikiqtaaluk Region	<hr/> -	<hr/> 9,970	<hr/> 6,770	<hr/> 83	<hr/> -	<hr/> -
<hr/>						
ᑕᓄᓄᓄᑕ Kitikmeot Region						
ᑕᓄᓄᓄᑕ Bathurst Inlet						
ᑕᓄᓄᓄᑕ ᑕᓄᓄᓄᑕ ᑕᓄᓄᓄᑕ ᐱᑕᑕᑕᑕᑕᑕᑕᑕᑕ Bathurst Road and Port Project	326	75	-	-	-	-
ᑕᓄᓄᓄᑕ ᑕᓄᓄᓄᑕ Total Kitikmeot Region	<hr/> -	<hr/> 75	<hr/> -	<hr/> -	<hr/> -	<hr/> -
ᐱᑦᑦᑦᑦᑦᑦᑦ ᐃᓄᑦᑦᑦᑦᑦᑦᑦ ᑕᓄᓄᓄᑕ Total Economic Development and Transportation	<hr/> -	<hr/> 13,545	<hr/> 9,470	<hr/> 2,783	<hr/> 3,200	<hr/> 3,200
<hr/>						

		ᐱᓐᓂᓐᓂᓐᓂᓐ					
		ᐱᓐᓂᓐᓂᓐᓂᓐ	ᐱᓐᓂᓐᓂᓐᓂᓐ	ᐱᓐᓂᓐᓂᓐᓂᓐ	ᐱᓐᓂᓐᓂᓐᓂᓐ	ᐱᓐᓂᓐᓂᓐᓂᓐ	
ᐱᓐᓂᓐᓂᓐᓂᓐ ᐱᓐᓂᓐᓂᓐᓂᓐ ᐱᓐᓂᓐᓂᓐᓂᓐ		2006/2007	2007/08	2008/09	2009/10	2010/11	2011/12
5-Year Capital Plan		Revised Budget	Budget	Planned	Planned	Planned	Planned
ᐱᓐᓂᓐᓂᓐᓂᓐ	Cape Dorset						
	ᐱᓐᓂᓐᓂᓐᓂᓐ ᐱᓐᓂᓐᓂᓐᓂᓐᓂᓐ / ᐱᓐᓂᓐᓂᓐᓂᓐᓂᓐ - ᓄᓇᓂᓄᓐ ᓂᓐᓂᓐ ᓂᓐᓂᓐᓂᓐᓂᓐ	384	431	383	360	385	385
	M & I / Retrofit - GN Funds						
	ᐱᓐᓂᓐᓂᓐᓂᓐ ᐱᓐᓂᓐᓂᓐᓂᓐᓂᓐ / ᐱᓐᓂᓐᓂᓐᓂᓐᓂᓐ - ᓂᓐᓂᓐ ᐃᓚᐱᓐᓂᓐᓂᓐᓂᓐᓂᓐ ᓂᓐᓂᓐᓂᓐᓂᓐᓂᓐ	227	227	224	245	242	261
	(ᐱᓐᓂᓐ ᐱᓐᓂᓐᓂᓐᓂᓐ)						
	M & I / Retrofit - CMHC Funded (not in total)						
ᓂᓐᓂᓐᓂᓐᓂᓐ	Clyde River						
	ᐱᓐᓂᓐᓂᓐᓂᓐ ᐱᓐᓂᓐᓂᓐᓂᓐᓂᓐ / ᐱᓐᓂᓐᓂᓐᓂᓐᓂᓐ - ᓄᓇᓂᓄᓐ ᓂᓐᓂᓐ ᓂᓐᓂᓐᓂᓐᓂᓐ	271	273	270	254	245	245
	M & I / Retrofit - GN Funds						
	ᐱᓐᓂᓐᓂᓐᓂᓐ ᐱᓐᓂᓐᓂᓐᓂᓐᓂᓐ / ᐱᓐᓂᓐᓂᓐᓂᓐᓂᓐ - ᓂᓐᓂᓐ ᐃᓚᐱᓐᓂᓐᓂᓐᓂᓐᓂᓐ ᓂᓐᓂᓐᓂᓐᓂᓐᓂᓐ	160	160	148	156	154	166
	(ᐱᓐᓂᓐ ᐱᓐᓂᓐᓂᓐᓂᓐ)						
	M & I / Retrofit - CMHC Funded (not in total)						
ᐱᓐᓂᓐᓂᓐᓂᓐ	Grise Fiord						
	ᐱᓐᓂᓐᓂᓐᓂᓐ ᐱᓐᓂᓐᓂᓐᓂᓐᓂᓐ / ᐱᓐᓂᓐᓂᓐᓂᓐᓂᓐ - ᓄᓇᓂᓄᓐ ᓂᓐᓂᓐ ᓂᓐᓂᓐᓂᓐᓂᓐ	113	127	125	128	88	88
	M & I / Retrofit - GN Funds						
	ᐱᓐᓂᓐᓂᓐᓂᓐ ᐱᓐᓂᓐᓂᓐᓂᓐᓂᓐ / ᐱᓐᓂᓐᓂᓐᓂᓐᓂᓐ - ᓂᓐᓂᓐ ᐃᓚᐱᓐᓂᓐᓂᓐᓂᓐᓂᓐ ᓂᓐᓂᓐᓂᓐᓂᓐᓂᓐ	67	67	66	56	55	59
	(ᐱᓐᓂᓐ ᐱᓐᓂᓐᓂᓐᓂᓐ)						
	M & I / Retrofit - CMHC Funded (not in total)						
ᐱᓐᓂᓐᓂᓐᓂᓐ	Hall Beach						
	ᐱᓐᓂᓐᓂᓐᓂᓐ ᐱᓐᓂᓐᓂᓐᓂᓐᓂᓐ / ᐱᓐᓂᓐᓂᓐᓂᓐᓂᓐ - ᓄᓇᓂᓄᓐ ᓂᓐᓂᓐ ᓂᓐᓂᓐᓂᓐᓂᓐ	187	208	195	186	175	175
	M & I / Retrofit - GN Funds						
	ᐱᓐᓂᓐᓂᓐᓂᓐ ᐱᓐᓂᓐᓂᓐᓂᓐᓂᓐ / ᐱᓐᓂᓐᓂᓐᓂᓐᓂᓐ - ᓂᓐᓂᓐ ᐃᓚᐱᓐᓂᓐᓂᓐᓂᓐᓂᓐ ᓂᓐᓂᓐᓂᓐᓂᓐᓂᓐ	111	111	109	111	110	118
	(ᐱᓐᓂᓐ ᐱᓐᓂᓐᓂᓐᓂᓐ)						
	M & I / Retrofit - CMHC Funded (not in total)						

ርዕራሽ ልማት ልማት ልማት ልማት 5-Year Capital Plan	ልማት	ልማት	ልማት	ልማት	ልማት	ልማት
	2006/2007	2007/08	2008/09	2009/10	2010/11	2011/12
	Revised Budget	Budget	Planned	Planned	Planned	Planned
ልክጋራ Iglolik						
ልክጋራ ልማት ልማት / ልማት ልማት ልማት ልማት ልማት	389	446	376	325	333	333
M & I / Retrofit - GN Funds						
ልክጋራ ልማት ልማት / ልማት ልማት - ልማት ልማት ልማት ልማት (ልማት ልማት ልማት)	230	230	231	212	209	225
M & I / Retrofit - CMHC Funded (not in total)						
ልክጋራ Iqaluit						
ልክጋራ ልማት ልማት ልማት / ልማት ልማት ልማት - ልማት ልማት ልማት ልማት	717	799	862	554	631	631
M & I / Retrofit - GN Funds						
ልክጋራ ልማት ልማት ልማት / ልማት ልማት ልማት - ልማት ልማት ልማት ልማት ልማት (ልማት ልማት ልማት)	424	424	417	401	396	427
M & I / Retrofit - CMHC Funded (not in total)						
ልክጋራ Kimmirut						
ልክጋራ ልማት ልማት ልማት / ልማት ልማት ልማት ልማት ልማት ልማት ልማት ልማት	113	131	129	97	140	140
M & I / Retrofit - GN Funds						
ልክጋራ ልማት ልማት ልማት / ልማት ልማት ልማት ልማት - ልማት ልማት ልማት ልማት ልማት (ልማት ልማት ልማት)	67	67	68	89	88	95
M & I / Retrofit - CMHC Funded (not in total)						
ልክጋራ Pangnirtung						
ልክጋራ ልማት ልማት ልማት ልማት / ልማት ልማት ልማት ልማት - ልማት ልማት ልማት ልማት ልማት	400	471	455	367	455	455
M & I / Retrofit - GN Funds						
ልክጋራ ልማት ልማት ልማት ልማት / ልማት ልማት ልማት ልማት - ልማት ልማት ልማት ልማት ልማት ልማት (ልማት ልማት ልማት)	237	237	242	290	286	308
M & I / Retrofit - CMHC Funded (not in total)						

		ᐊᓕᓕᓕᓐᓂᓐᓂᓐ					
		ᐊᓕᓕᓕᓐᓂᓐ	ᐊᓕᓕᓕᓐᓂᓐ	ᐊᓕᓕᓕᓐᓂᓐ	ᐊᓕᓕᓕᓐᓂᓐ	ᐊᓕᓕᓕᓐᓂᓐ	
ᐊᓕᓕᓕᓐᓂᓐ ᐊᓕᓕᓕᓐᓂᓐ ᐊᓕᓕᓕᓐᓂᓐ		2006/07	2007/08	2008/09	2009/10	2010/11	2011/12
5-Year Capital Plan		Revised Budget	Budget	Planned	Planned	Planned	Planned
ᐊᓕᓕᓕᓐᓂᓐ	Pond Inlet						
ᐊᓕᓕᓕᓐᓂᓐ ᐊᓕᓕᓕᓐᓂᓐᓂᓐᓂᓐ / ᐊᓕᓕᓕᓐᓂᓐᓂᓐᓂᓐ - ᓄᓇᓂᓄᓐ ᓂᓄᓂᓐ ᓂᓄᓂᓐᓂᓐ		415	459	456	439	368	368
M & I / Retrofit - GN Funds							
ᐊᓕᓕᓕᓐᓂᓐ ᐊᓕᓕᓕᓐᓂᓐᓂᓐᓂᓐ / ᐊᓕᓕᓕᓐᓂᓐᓂᓐᓂᓐ - ᓂᓄᓂᓐ ᐊᓕᓕᓕᓐᓂᓐᓂᓐᓂᓐᓂᓐ ᓂᓄᓂᓐᓂᓐᓂᓐᓂᓐ		246	246	241	234	231	249
(ᓂᓄᓂᓐ ᐊᓕᓕᓕᓐᓂᓐᓂᓐ)							
M & I / Retrofit - CMHC Funded (not in total)							
ᓂᓄᓂᓐᓂᓐᓂᓐ	Qikiqtarjuaq						
ᐊᓕᓕᓕᓐᓂᓐ ᐊᓕᓕᓕᓐᓂᓐᓂᓐᓂᓐ / ᐊᓕᓕᓕᓐᓂᓐᓂᓐᓂᓐᓂᓐ - ᓄᓇᓂᓄᓐ ᓂᓄᓂᓐ ᓂᓄᓂᓐᓂᓐ		229	272	271	288	175	175
M & I / Retrofit - GN Funds							
ᐊᓕᓕᓕᓐᓂᓐ ᐊᓕᓕᓕᓐᓂᓐᓂᓐᓂᓐ / ᐊᓕᓕᓕᓐᓂᓐᓂᓐᓂᓐᓂᓐ - ᓂᓄᓂᓐ ᐊᓕᓕᓕᓐᓂᓐᓂᓐᓂᓐᓂᓐ ᓂᓄᓂᓐᓂᓐᓂᓐᓂᓐ		136	136	139	111	110	118
(ᓂᓄᓂᓐ ᐊᓕᓕᓕᓐᓂᓐᓂᓐ)							
M & I / Retrofit - CMHC Funded (not in total)							
ᓂᓄᓂᓐᓂᓐᓂᓐ	Resolute Bay						
ᐊᓕᓕᓕᓐᓂᓐ ᐊᓕᓕᓕᓐᓂᓐᓂᓐᓂᓐ / ᐊᓕᓕᓕᓐᓂᓐᓂᓐᓂᓐᓂᓐ - ᓄᓇᓂᓄᓐ ᓂᓄᓂᓐ ᓂᓄᓂᓐᓂᓐ		116	123	126	135	32	32
M & I / Retrofit - GN Funds							
ᐊᓕᓕᓕᓐᓂᓐ ᐊᓕᓕᓕᓐᓂᓐᓂᓐᓂᓐ / ᐊᓕᓕᓕᓐᓂᓐᓂᓐᓂᓐᓂᓐ - ᓂᓄᓂᓐ ᐊᓕᓕᓕᓐᓂᓐᓂᓐᓂᓐᓂᓐ ᓂᓄᓂᓐᓂᓐᓂᓐᓂᓐ		68	68	65	56	59	22
(ᓂᓄᓂᓐ ᐊᓕᓕᓕᓐᓂᓐᓂᓐ)							
M & I / Retrofit - CMHC Funded (not in total)							
ᐊᓕᓕᓕᓐᓂᓐ	Sanikiluaq						
ᐊᓕᓕᓕᓐᓂᓐ ᐊᓕᓕᓕᓐᓂᓐᓂᓐᓂᓐ / ᐊᓕᓕᓕᓐᓂᓐᓂᓐᓂᓐᓂᓐ - ᓄᓇᓂᓄᓐ ᓂᓄᓂᓐ ᓂᓄᓂᓐᓂᓐ		191	210	201	170	71	71
M & I / Retrofit - GN Funds							
ᐊᓕᓕᓕᓐᓂᓐ ᐊᓕᓕᓕᓐᓂᓐᓂᓐᓂᓐ / ᐊᓕᓕᓕᓐᓂᓐᓂᓐᓂᓐᓂᓐ - ᓂᓄᓂᓐ ᐊᓕᓕᓕᓐᓂᓐᓂᓐᓂᓐᓂᓐ ᓂᓄᓂᓐᓂᓐᓂᓐᓂᓐ		113	113	110	123	101	48
(ᓂᓄᓂᓐ ᐊᓕᓕᓕᓐᓂᓐᓂᓐ)							
M & I / Retrofit - CMHC Funded (not in total)							

ሥራ ስራ ለገንዘብ ለማግኘት ለሚያስፈልጉት 5-Year Capital Plan	የሥራ ስራ ለገንዘብ ለማግኘት ለሚያስፈልጉት	ሥራ ስራ ለገንዘብ ለማግኘት ለሚያስፈልጉት	ሥራ ስራ ለገንዘብ ለማግኘት ለሚያስፈልጉት	ሥራ ስራ ለገንዘብ ለማግኘት ለሚያስፈልጉት	ሥራ ስራ ለገንዘብ ለማግኘት ለሚያስፈልጉት	ሥራ ስራ ለገንዘብ ለማግኘት ለሚያስፈልጉት
	2006/2007 Revised Budget	2007/08 Budget	2008/09 Planned	2009/10 Planned	2010/11 Planned	2011/12 Planned
የቦታዎች ግንባታ - ልዩ ልዩ ገጽ Qikiqtaaluk - various						
የሥራ ስራ ለገንዘብ ለማግኘት ለሚያስፈልጉት Homeowner Programs	1,500	1,000	1,000	1,000	1,000	1,000
ጠቅላይ የቦታዎች ግንባታ Total Qikiqtaaluk Region	-	6,258	5,149	4,616	4,326	4,326
የሥራ ስራ ለገንዘብ ለማግኘት ለሚያስፈልጉት Kivalliq Region						
የሥራ ስራ ለገንዘብ ለማግኘት ለሚያስፈልጉት Arviat						
የሥራ ስራ ለገንዘብ ለማግኘት ለሚያስፈልጉት M & I / Retrofit - GN Funds	380	378	473	421	443	443
የሥራ ስራ ለገንዘብ ለማግኘት ለሚያስፈልጉት M & I / Retrofit - CMHC Funded (not in total)	225	225	205	283	278	300
የሥራ ስራ ለገንዘብ ለማግኘት ለሚያስፈልጉት Baker Lake						
የሥራ ስራ ለገንዘብ ለማግኘት ለሚያስፈልጉት M & I / Retrofit - GN Funds	379	473	368	361	342	342
የሥራ ስራ ለገንዘብ ለማግኘት ለሚያስፈልጉት M & I / Retrofit - CMHC Funded (not in total)	224	224	238	214	215	231
የሥራ ስራ ለገንዘብ ለማግኘት ለሚያስፈልጉት Chesterfield Inlet						
የሥራ ስራ ለገንዘብ ለማግኘት ለሚያስፈልጉት M & I / Retrofit - GN Funds	188	281	215	146	140	140
የሥራ ስራ ለገንዘብ ለማግኘት ለሚያስፈልጉት M & I / Retrofit - CMHC Funded (not in total)	112	112	134	89	88	94

ᐸᓕᓕᓂᓄᓐ ᐸᓕᓕᓂᓄᓐ ᐸᓕᓕᓂᓄᓐ ᐸᓕᓕᓂᓄᓐ 5-Year Capital Plan	ᐸᓕᓕᓂᓄᓐ	ᐸᓕᓕᓂᓄᓐ	ᐸᓕᓕᓂᓄᓐ	ᐸᓕᓕᓂᓄᓐ	ᐸᓕᓕᓂᓄᓐ	ᐸᓕᓕᓂᓄᓐ
	2006/2007 Revised Budget	2007/08 Budget	2008/09 Planned	2009/10 Planned	2010/11 Planned	2011/12 Planned
ᐸᓕᓕᓂᓄᓐ - ᓄᓇᓂᓄᓐ Kivalliq - various						
ᓄᓇᓂᓄᓐ ᐸᓕᓕᓂᓄᓐ ᐸᓕᓕᓂᓄᓐ Homeowner Programs	825	550	550	550	550	550
ᐸᓕᓕᓂᓄᓐ ᐸᓕᓕᓂᓄᓐ Total Kivalliq Region	-	2,920	2,811	2,430	2,362	2,362
ᐸᓕᓕᓂᓄᓐ Kitikmeot Region						
ᐸᓕᓕᓂᓄᓐ ᐸᓕᓕᓂᓄᓐ Cambridge Bay						
ᐸᓕᓕᓂᓄᓐ ᐸᓕᓕᓂᓄᓐ ᐸᓕᓕᓂᓄᓐ - ᓄᓇᓂᓄᓐ ᓂᓄᓂᓄᓐ ᐸᓕᓕᓂᓄᓐ M & I / Retrofit - GN Funds	369	420	413	351	337	337
ᐸᓕᓕᓂᓄᓐ ᐸᓕᓕᓂᓄᓐ ᐸᓕᓕᓂᓄᓐ - ᐸᓕᓕᓂᓄᓐ ᐸᓕᓕᓂᓄᓐ ᐸᓕᓕᓂᓄᓐ (ᐸᓕᓕᓂᓄᓐ ᐸᓕᓕᓂᓄᓐ) M & I / Retrofit - CMHC Funded (not in total)	219	219	218	214	211	228
ᐸᓕᓕᓂᓄᓐ ᐸᓕᓕᓂᓄᓐ Gjoa Haven						
ᐸᓕᓕᓂᓄᓐ ᐸᓕᓕᓂᓄᓐ ᐸᓕᓕᓂᓄᓐ - ᓄᓇᓂᓄᓐ ᓂᓄᓂᓄᓐ ᐸᓕᓕᓂᓄᓐ M & I / Retrofit - GN Funds	290	321	336	282	270	270
ᐸᓕᓕᓂᓄᓐ ᐸᓕᓕᓂᓄᓐ ᐸᓕᓕᓂᓄᓐ - ᐸᓕᓕᓂᓄᓐ ᐸᓕᓕᓂᓄᓐ ᐸᓕᓕᓂᓄᓐ (ᐸᓕᓕᓂᓄᓐ ᐸᓕᓕᓂᓄᓐ) M & I / Retrofit - CMHC Funded (not in total)	172	172	168	171	169	182
ᐸᓕᓕᓂᓄᓐ Kugaaruk						
ᐸᓕᓕᓂᓄᓐ ᐸᓕᓕᓂᓄᓐ ᐸᓕᓕᓂᓄᓐ - ᓄᓇᓂᓄᓐ ᓂᓄᓂᓄᓐ ᐸᓕᓕᓂᓄᓐ M & I / Retrofit - GN Funds	188	197	175	141	135	135
ᐸᓕᓕᓂᓄᓐ ᐸᓕᓕᓂᓄᓐ ᐸᓕᓕᓂᓄᓐ - ᐸᓕᓕᓂᓄᓐ ᐸᓕᓕᓂᓄᓐ ᐸᓕᓕᓂᓄᓐ (ᐸᓕᓕᓂᓄᓐ ᐸᓕᓕᓂᓄᓐ) M & I / Retrofit - CMHC Funded (not in total)	111	111	104	86	85	91





		ግብይት ለግብይት					
		ግብይት ለግብይት	ግብይት ለግብይት	ግብይት ለግብይት	ግብይት ለግብይት	ግብይት ለግብይት	
5-ላይን ስጦት ለግብይት ለግብይት		2006/2007	2007/08	2008/09	2009/10	2010/11	2011/12
5-Year Gas Tax Projects		Revised Budget	Budget	Planned	Planned	Planned	Planned
ዞታ Kimmirut							
	ግብይት ለግብይት ለግብይት ለግብይት	300	-	-	-	-	-
	Installation of a Hydro Line to truck fill station						
	ግብይት ለግብይት ለግብይት ለግብይት	-	-	100	900	-	-
	Reclamation of Abandoned Lagoon and Solid Waste Sites						
ግብይት ለግብይት Pangnirtung							
	ግብይት ለግብይት ለግብይት ለግብይት	1,500	-	-	-	-	-
	Solid Waste Site Improvements						
	ግብይት ለግብይት ለግብይት ለግብይት	-	-	300	1,200	-	-
	Water Reservoir Expansion						
	ግብይት ለግብይት ለግብይት ለግብይት	500	-	-	-	-	-
	Sludge Handling Facility						
	ግብይት ለግብይት ለግብይት ለግብይት	205	500	-	-	-	-
	Sewage Treatment Plant						
ግብይት ለግብይት Resolute Bay							
	ግብይት ለግብይት ለግብይት ለግብይት ለግብይት	-	-	100	900	-	-
	Landfill-Bulky Metals						
	ግብይት ለግብይት ለግብይት ለግብይት	-	-	100	750	-	-
	Land Fill Site						
ግብይት ለግብይት Total Qikiqtaaluk Region		-	3,550	2,775	9,100	2,600	-

		የጥበቃ ስራ					
		ጥቅምት	ጥቅምት	ጥቅምት	ጥቅምት	ጥቅምት	ጥቅምት
5-ዓመት ስራ ስራ ስራ ስራ ስራ ስራ		2006/2007	2007/08	2008/09	2009/10	2010/11	2011/12
5-Year Gas Tax Projects		Revised Budget	Budget	Planned	Planned	Planned	Planned
ጥቅምት <i>Kivalliq Region</i>							
ጥቅምት <i>Arviat</i>							
	ጥቅምት ስራ	-	100	900	-	-	-
	Water Supply Filtration						
	ጥቅምት-ጥቅምት ስራ ስራ ስራ ስራ ስራ ስራ	-	-	100	900	-	-
	Landfill-Bulky Metal Clean Up						
	ጥቅምት ስራ ስራ ስራ ስራ ስራ ስራ ስራ	-	-	-	200	1,300	-
	Solid Waste Improvement						
ጥቅምት <i>Baker Lake</i>							
	ጥቅምት ስራ ስራ ስራ ስራ ስራ ስራ ስራ	192	200	-	-	-	-
	Water System Pumphouse Upgrade						
ጥቅምት <i>Chesterfield Inlet</i>							
	ጥቅምት ስራ ስራ ስራ ስራ ስራ ስራ ስራ	-	150	850	-	-	-
	Reservoir Pump House						
	ጥቅምት ስራ ስራ ስራ ስራ ስራ ስራ ስራ	-	-	150	850	-	-
	Sewage Lagoon						
ጥቅምት <i>Coral Harbour</i>							
	ጥቅምት ስራ ስራ ስራ ስራ ስራ ስራ ስራ	1,000	-	-	-	-	-
	Sewage Wetland						
ጥቅምት <i>Rankin Inlet</i>							
	ጥቅምት ስራ ስራ ስራ ስራ ስራ ስራ ስራ ስራ	20	-	-	-	-	-
	Nipissar Lake Pump House Improvements						
	ጥቅምት ስራ ስራ ስራ ስራ ስራ ስራ ስራ ስራ	90	-	-	-	-	-
	Water Pump House Improvements						
	ጥቅምት ስራ ስራ ስራ ስራ ስራ ስራ ስራ ስራ	-	-	100	700	-	-
	Abandon Old Solid Waste Site						

		የግብይት ዓመት					
		የተሻሻለ	የግብይት	የግብይት	የግብይት	የግብይት	
		2006/2007	2007/08	2008/09	2009/10	2010/11	2011/12
		Revised	Budget	Planned	Planned	Planned	Planned
		Budget					
5-ዓመት ስራ ለማግኘት ስራዎች							
5-Year Gas Tax Projects							
ግብይት Repulse Bay							
የግብይት	Dumps	-	-	50	450	-	-
ግብይት ግብይት Total Kivalliq Region		-	450	2,150	3,100	1,300	-
ግብይት Kitikmeot Region							
ግብይት Cambridge Bay							
የግብይት	የግብይት	-	250	1,500	750	-	-
	Sewage Lagoon						
የግብይት	የግብይት ግብይት ግብይት	677	750	-	-	-	-
	Solid Waste Facility and Site Fencing						
ግብይት Taloyoak							
የግብይት	የግብይት ግብይት	326	1,500	1,000	-	-	-
	Water Treatment Plant						
ግብይት ግብይት Total Kitikmeot Region		-	2,500	2,500	750	-	-
ግብይት ግብይት ግብይት ግብይት ግብይት ግብይት		-	6,500	7,425	12,950	3,900	-
Total Gas Tax Projects							

	፳፻፲፱ ዓ.ም. ለ፳፻፳፱ ዓ.ም. ለ፳፻፳፱ ዓ.ም. ለ፳፻፳፱ ዓ.ም. ለ፳፻፳፱ ዓ.ም. ለ፳፻፳፱ ዓ.ም.					
	፳፻፲፱ ዓ.ም. ለ፳፻፳፱ ዓ.ም.	፳፻፲፱ ዓ.ም. ለ፳፻፳፱ ዓ.ም.	፳፻፲፱ ዓ.ም. ለ፳፻፳፱ ዓ.ም.	፳፻፲፱ ዓ.ም. ለ፳፻፳፱ ዓ.ም.	፳፻፲፱ ዓ.ም. ለ፳፻፳፱ ዓ.ም.	፳፻፲፱ ዓ.ም. ለ፳፻፳፱ ዓ.ም.
5-ሰባት ዓ.ም. ለ፳፻፳፱ ዓ.ም.	2006/2007	2007/08	2008/09	2009/10	2010/11	2011/12
፳፻፲፱ ዓ.ም. ለ፳፻፳፱ ዓ.ም.	Revised	Budget	Planned	Planned	Planned	Planned
5-Year MRIF Projects	Budget					

መጋቢት ፳፻፱ ዓ.ም. ለ፳፻፲፱ ዓ.ም. ለ፳፻፳፱ ዓ.ም. ለ፳፻፳፱ ዓ.ም. ለ፳፻፳፱ ዓ.ም. ለ፳፻፳፱ ዓ.ም.
 ለ፳፻፲፱ ዓ.ም. ለ፳፻፳፱ ዓ.ም. ለ፳፻፳፱ ዓ.ም. ለ፳፻፳፱ ዓ.ም. ለ፳፻፳፱ ዓ.ም. ለ፳፻፳፱ ዓ.ም.
 NCIAC / CGS Capital Projects Listing

፳፻፲፱ ዓ.ም. ለ፳፻፳፱ ዓ.ም. Qikiqtaaluk Region

፳፻፲፱ ዓ.ም. ለ፳፻፳፱ ዓ.ም. Arctic Bay

፳፻፲፱ ዓ.ም. ለ፳፻፳፱ ዓ.ም.	-	400	3,200	-	-	-
Community Hall						

፳፻፲፱ ዓ.ም. ለ፳፻፳፱ ዓ.ም. Cape Dorset

፳፻፲፱ ዓ.ም. ለ፳፻፳፱ ዓ.ም.	-	300	-	-	-	-
Repairs to Arena						

፳፻፲፱ ዓ.ም. ለ፳፻፳፱ ዓ.ም. Grise Fiord

፳፻፲፱ ዓ.ም. ለ፳፻፳፱ ዓ.ም.	-	-	-	-	200	1,300
Qaggivik Community Centre Expansion						

፳፻፲፱ ዓ.ም. ለ፳፻፳፱ ዓ.ም. Hall Beach

፳፻፲፱ ዓ.ም. ለ፳፻፳፱ ዓ.ም.	-	-	200	1,800	-	-
Community Hall Expansion						

፳፻፲፱ ዓ.ም. ለ፳፻፳፱ ዓ.ም. Igloolik

፳፻፲፱ ዓ.ም. ለ፳፻፳፱ ዓ.ም.	-	-	300	3,600	-	-
Replacement of Community Hall						

፳፻፲፱ ዓ.ም. ለ፳፻፳፱ ዓ.ም. Pond Inlet

፳፻፲፱ ዓ.ም. ለ፳፻፳፱ ዓ.ም.	1,627	800	-	-	-	-
Community Hall						

፳፻፲፱ ዓ.ም. ለ፳፻፳፱ ዓ.ም. Resolute Bay

፳፻፲፱ ዓ.ም. ለ፳፻፳፱ ዓ.ም.	-	-	-	400	1,600	1,000
Arena						

		ፋይናንሳዊ ዓመት				
		፳፻፲፱/፳፻፲፱	፳፻፲፱/፳፻፳፱	፳፻፳፱/፳፻፳፱	፳፻፳፱/፳፻፳፱	፳፻፳፱/፳፻፳፱
		Revised Budget	Budget	Planned	Planned	Planned
5-ዓመት ለፌዴራል ገንዘብ ማስፈጸሚያ ስራዎች						
5-Year MRIF Projects						
ሳንቪሊዋክ Sanikiluaq						
ሳንቪሊላ ግንባታ ስራዎች ማስፈጸሚያ ስራዎች						
ግንባታ ስራዎች ማስፈጸሚያ ስራዎች		50	700	-	-	-
Repairs of 3-Bay Garage and Two 2-Bay Garages						
ጠቅላይ ግንባታ ስራዎች Total Qikiqtaaluk Region		-	2,200	3,700	5,800	1,800 2,300
ግንባታ ስራዎች Kivalliq Region						
ገንባታ ስራዎች Rankin Inlet						
ግንባታ ስራዎች ማስፈጸሚያ ስራዎች						
Retrofit at Arena		-	-	-	-	500
ግንባታ ስራዎች Repulse Bay						
ግንባታ ስራዎች ማስፈጸሚያ ስራዎች						
Community Hall		-	-	400	3,100	-
ግንባታ ስራዎች Whale Cove						
ግንባታ ስራዎች ማስፈጸሚያ ስራዎች						
Community Hall		-	300	3,200	-	-
ጠቅላይ ግንባታ ስራዎች Total Kivalliq Region		-	300	3,600	3,100	- 500
ግንባታ ስራዎች Kitikmeot Region						
ግንባታ ስራዎች Gjoa Haven						
ግንባታ ስራዎች ማስፈጸሚያ ስራዎች						
Community Hall		(375)	2,000	1,000	-	-

		ᓄᓇᓕᓄᓪᓂ	ᓄᓇᓕᓄᓪᓂ	ᓄᓇᓕᓄᓪᓂ	ᓄᓇᓕᓄᓪᓂ	ᓄᓇᓕᓄᓪᓂ	ᓄᓇᓕᓄᓪᓂ
		ᓄᓇᓕᓄᓪᓂ	ᓄᓇᓕᓄᓪᓂ	ᓄᓇᓕᓄᓪᓂ	ᓄᓇᓕᓄᓪᓂ	ᓄᓇᓕᓄᓪᓂ	ᓄᓇᓕᓄᓪᓂ
		ᓄᓇᓕᓄᓪᓂ	ᓄᓇᓕᓄᓪᓂ	ᓄᓇᓕᓄᓪᓂ	ᓄᓇᓕᓄᓪᓂ	ᓄᓇᓕᓄᓪᓂ	ᓄᓇᓕᓄᓪᓂ
5-ᓄᓇᓕᓄᓪᓂ ᓄᓇᓕᓄᓪᓂ ᓄᓇᓕᓄᓪᓂ		2006/2007	2007/08	2008/09	2009/10	2010/11	2011/12
ᓄᓇᓕᓄᓪᓂ ᓄᓇᓕᓄᓪᓂ ᓄᓇᓕᓄᓪᓂ		Revised	Budget	Planned	Planned	Planned	Planned
5-Year MRIF Projects		Budget					
ᓄᓇᓄᓪᓂ	Kugaaruk						
ᓄᓇᓄᓪᓂ ᓄᓇᓄᓪᓂ ᓄᓇᓄᓪᓂ	Garage Renovations	-	50	700	-	-	-
ᓄᓇᓄᓪᓂ ᓄᓇᓄᓪᓂ ᓄᓇᓄᓪᓂ	Hamlet Complex Renovations	-	500	-	-	-	-
ᓄᓇᓄᓪᓂ	Taloyoak						
ᓄᓇᓄᓪᓂ ᓄᓇᓄᓪᓂ ᓄᓇᓄᓪᓂ	Renovation to Community Hall	-	-	-	-	-	350
ᓄᓇᓄᓪᓂ ᓄᓇᓄᓪᓂ ᓄᓇᓄᓪᓂ	Total Kitikmeot Region	-	2,550	1,700	-	-	350
ᓄᓇᓄᓪᓂ ᓄᓇᓄᓪᓂ ᓄᓇᓄᓪᓂ	ᓄᓇᓄᓪᓂ ᓄᓇᓄᓪᓂ ᓄᓇᓄᓪᓂ	-	5,050	9,000	8,900	1,800	3,150
Total MRIF Projects							

	ግብይት					
	2006/2007	2007/08	2008/09	2009/10	2010/11	2011/12
5-ሰነድ ለሰጠው ሰነድ ለሰጠው ሰነድ	2006/2007	2007/08	2008/09	2009/10	2010/11	2011/12
ግብይት ለሰጠው ሰነድ	Revised	Budget	Planned	Planned	Planned	Planned
5-Year SIF Projects	Budget					
መጋቢት ወር መረጃውን ያሰጠው ልዩ ልዩ ሰነድ ከብሉይ ስርዓት/ወር መረጃውን ለሰጠው ሰነድ						
ለሰጠው ሰነድ ለሰጠው ሰነድ ለሰጠው ሰነድ						
NCIAC / CGS Capital Projects Listing						
ግብይት	Qikiqtaaluk Region					
ግብይት	Qikiqtarjuaq					
መረጃ ለሰጠው ሰነድ	1,724	1,500	500	-	-	-
Municipal Services						
ግብይት	Resolute Bay					
ግብይት ለሰጠው ሰነድ	786	1,332	204	-	-	-
Sewage and Water Works						
ግብይት ግብይት	-	2,832	704	-	-	-
ግብይት ግብይት						
ግብይት	Kivalliq Region					
ግብይት	Rankin Inlet					
ግብይት ለሰጠው ሰነድ	2,100	4,200	3,300	700	650	-
Sewage Treatment Plant						
ግብይት ግብይት	-	4,200	3,300	700	650	-
ግብይት ግብይት						
ግብይት	Kitikmeot Region					
ግብይት	Kugluktuk					
ግብይት ለሰጠው ሰነድ	561	2,000	900	-	-	-
Water Treatment Plant						
ግብይት ለሰጠው ሰነድ	868	2000	-	-	-	-
Sewage Lagoon						
ግብይት ግብይት	-	4,000	900	-	-	-
ግብይት ግብይት						
ግብይት ለሰጠው ሰነድ ለሰጠው ሰነድ	-	11,032	4,904	700	650	-
ግብይት						
Total SIF Projects						
ግብይት ግብይት	-	22,582	21,329	22,550	6,350	3,150
ግብይት ግብይት						



