

ᐃᓗᓕᓴᓂᓄᓐ ᓄᓂᓴᓄᓐᓗᓂᓐ

ᓄᐃᓕᓂᓴᓂᓄᓐ ᓄᓂᓴᓄᓐᓗᓂᓐ

ᓄᓗᓄᐃᓄᓂᓴᓂᓄᓐ	iv
ᐃᓴᓴᓴᓂᓄᓐᓴᓂᓄᓐ ᐃᓄᓴᓄᓂᓴᓂᓄᓐ - ᓄᓴᓂᓄᓐ ᐃᓴᓴᓴᓂᓄᓐ ᓄᓂᓴᓄᓐᓗᓂᓐ ᐃᓴᓴᓴᓂᓄᓐᓴᓂᓄᓐ	vi
ᓄᐃᓕᓂᓴᓂᓄᓐ ᐃᓴᓴᓴᓂᓄᓐ ᐃᓴᓴᓴᓂᓄᓐ, ᓄᓄᓄᓴᓂᓄᓐ ᐃᓴᓴᓴᓂᓄᓐᓴᓂᓄᓐ	vii
ᓄᐃᓕᓂᓴᓂᓄᓐ ᐃᓴᓴᓴᓂᓄᓐ ᐃᓴᓴᓴᓂᓄᓐ, ᓄᓴᓴᓴᓂᓄᓐ ᓄᓄᓄᓴᓂᓄᓐ	viii

ᐃᓴᓴᓴᓂᓄᓐ ᐃᓴᓴᓴᓂᓄᓐᓴᓂᓄᓐ ᐃᓴᓴᓴᓂᓄᓐᓴᓂᓄᓐ

ᓴᓴᓴᓴᓂᓄᓐᓴᓂᓄᓐ	A-1
ᓴᓴᓴᓴᓂᓄᓐᓴᓂᓄᓐ	E-1
ᐃᓴᓴᓴᓂᓄᓐᓴᓂᓄᓐ	F-1
ᐃᓴᓴᓴᓂᓄᓐᓴᓂᓄᓐ	G-1
ᐃᓴᓴᓴᓂᓄᓐᓴᓂᓄᓐ ᐃᓴᓴᓴᓂᓄᓐᓴᓂᓄᓐ	H-1
ᐃᓴᓴᓴᓂᓄᓐᓴᓂᓄᓐ	I-1
ᓄᓄᓄᓴᓂᓄᓐ ᓴᓴᓴᓴᓂᓄᓐ ᐃᓴᓴᓴᓂᓄᓐᓴᓂᓄᓐ	J-1
ᐃᓴᓴᓴᓂᓄᓐᓴᓂᓄᓐ ᐃᓴᓴᓴᓂᓄᓐᓴᓂᓄᓐ	K-1
ᓄᓄᓄᓴᓂᓄᓐ ᐃᓴᓴᓴᓂᓄᓐᓴᓂᓄᓐ	L-1

ᐃᓴᓴᓴᓂᓄᓐ I- ᓄᓴᓴᓴᓂᓄᓐ ᐃᓴᓴᓴᓂᓄᓐ ᓄᓴᓴᓴᓂᓄᓐ	I-1
------------------------------------	-----

ᐃᓴᓴᓴᓂᓄᓐ II- ᓄᓄᓄᓴᓂᓄᓐ ᓄᓴᓴᓴᓂᓄᓐ	II-1
-----------------------------	------

ᐃᓴᓴᓴᓂᓄᓐ III- 5-ᐃᓴᓴᓴᓂᓄᓐ ᐃᓴᓴᓴᓂᓄᓐ ᐃᓴᓴᓴᓂᓄᓐ	III-1
--	-------

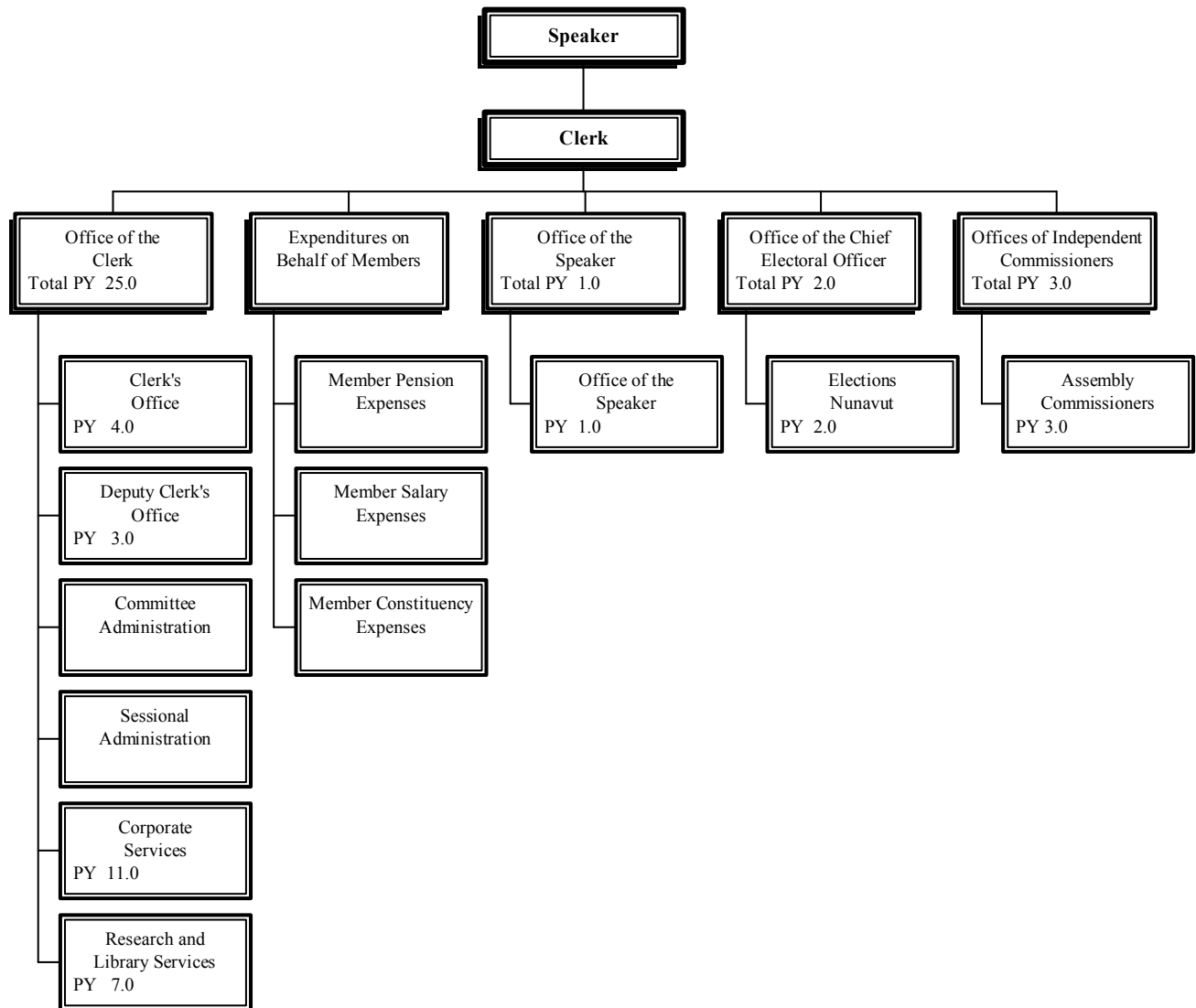




Jobie Nutarak
 Speaker of the Legislative Assembly

John Quirke
 Clerk of the Legislative Assembly

ACCOUNTING STRUCTURE CHART









ᐃᑦᑲᑦᑲᑦᑲᑦᑲᑦᑲᑦ



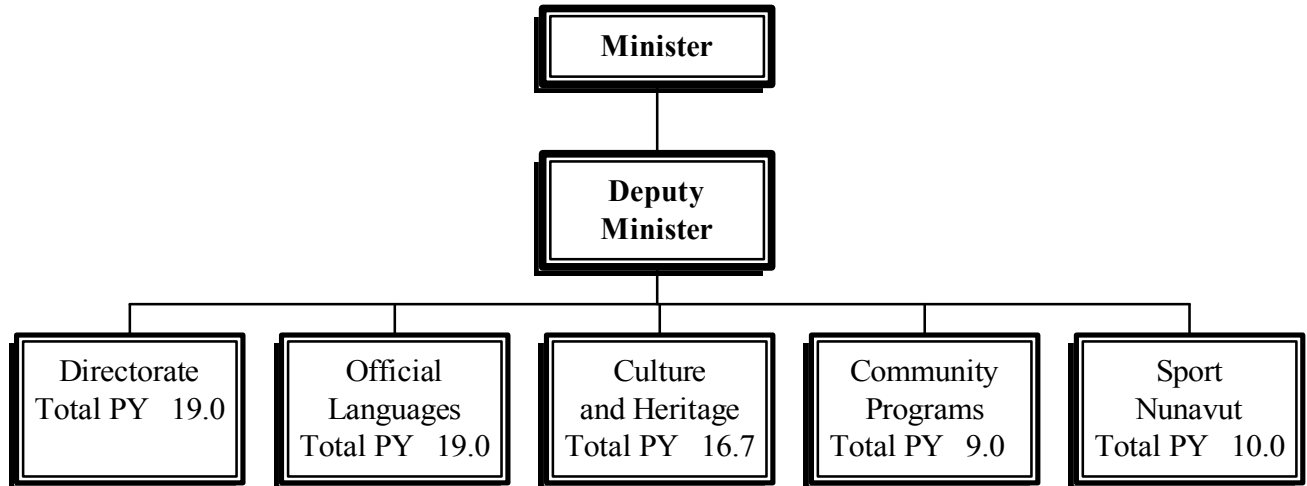
CULTURE, LANGUAGE,
ELDERS AND YOUTH

Louis Tapardjuk
Minister

David Akeagok
Deputy Minister

Naullaq Arnaquq
Assistant Deputy Minister

ACCOUNTING STRUCTURE CHART



ᐃᐱᑦᑲᑦᑲᑦᑲᑦᑲᑦ ᐃᑦᑲᑦᑲᑦᑲᑦᑲᑦ
DETAIL OF EXPENDITURES

	ᐃᑦᑲᑦᑲᑦᑲᑦᑲᑦ ᐃᑦᑲᑦᑲᑦᑲᑦᑲᑦ 2006-2007 Capital Estimates (\$000)	ᐃᑦᑲᑦᑲᑦᑲᑦᑲᑦ ᐃᑦᑲᑦᑲᑦᑲᑦᑲᑦ 2005-2006 Revised Estimates (\$000)	ᐃᑦᑲᑦᑲᑦᑲᑦᑲᑦ ᐃᑦᑲᑦᑲᑦᑲᑦᑲᑦ 2005-2006 Capital Estimates (\$000)	ᐃᑦᑲᑦᑲᑦᑲᑦᑲᑦ ᐃᑦᑲᑦᑲᑦᑲᑦᑲᑦ 2004-2005 Actual Expenditures (\$000)
ᐃᑦᑲᑦᑲᑦᑲᑦᑲᑦ ᐃᑦᑲᑦᑲᑦᑲᑦᑲᑦ	Capital Expenditures			
ᑲᑦᑲᑦᑲᑦᑲᑦᑲᑦ ᐃᑦᑲᑦᑲᑦᑲᑦᑲᑦ	1,623	1,408	1,222	687
ᐃᑦᑲᑦᑲᑦᑲᑦᑲᑦ ᐱᑦᑲᑦᑲᑦᑲᑦ	1,560	374	138	1,763
ᑲᑦᑲᑦᑲᑦᑲᑦᑲᑦ ᑲᑦᑲᑦᑲᑦᑲᑦᑲᑦ ᑲᑦᑲᑦᑲᑦᑲᑦᑲᑦᑲᑦ	-	-	-	-
ᑲᑦᑲᑦᑲᑦᑲᑦᑲᑦ ᐃᑦᑲᑦᑲᑦᑲᑦᑲᑦ ᐃᑦᑲᑦᑲᑦᑲᑦᑲᑦ	3,183	1,782	1,360	2,450





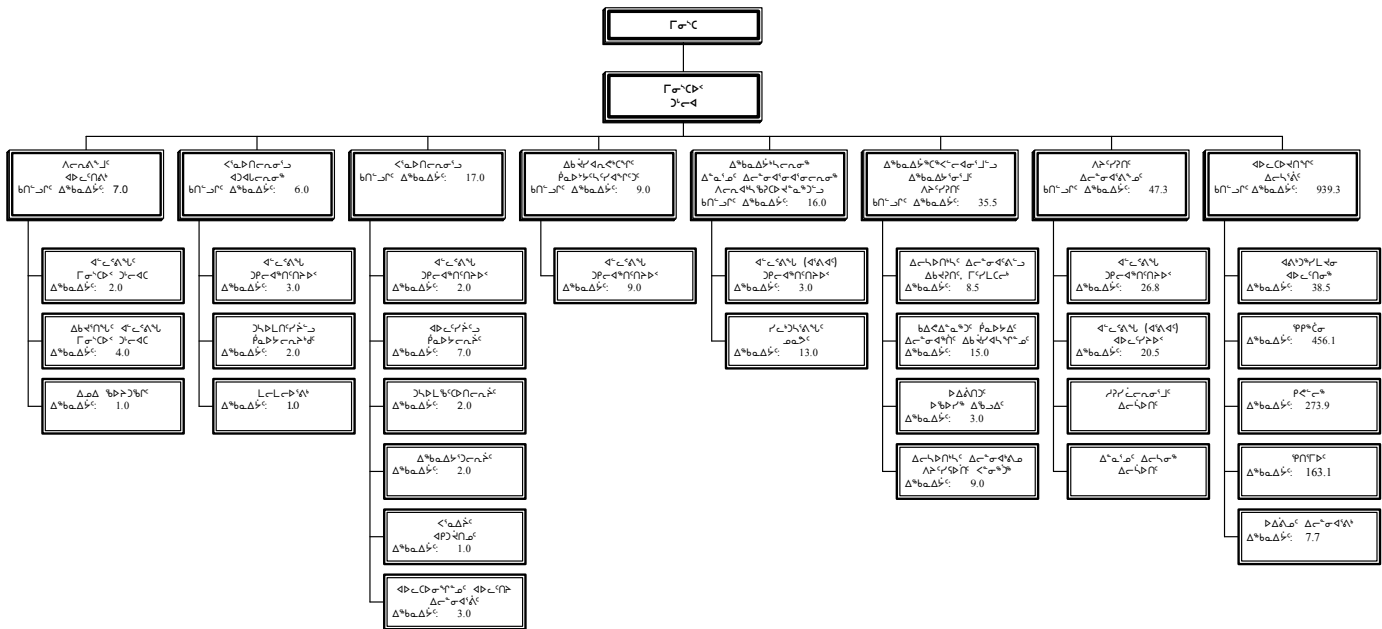
Δεεε εε
 Γεεε

εε εε
 Γεεεεε εεεεεε εεεεεε

εε εεεε
 Γεεεεε εεεεεε

εε εεεεεε
 Γεεεεε εεεεεε εεεεεε

Ρεδτερελερε εεεεεεεεεε



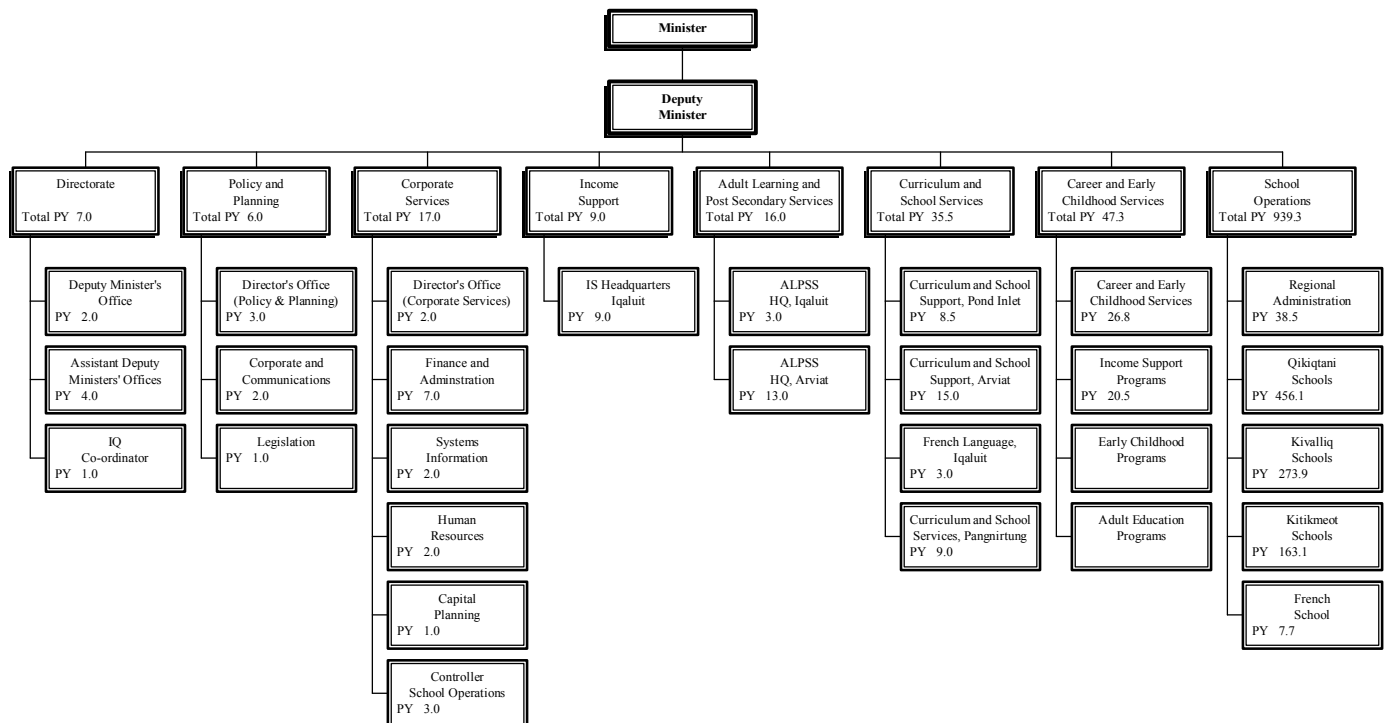
Edward Picco
 Minister

Peter Geikie
 Assistant Deputy Minister

Pam Hine
 Deputy Minister

Irene Tanuyak
 Assistant Deputy Minister

ACCOUNTING STRUCTURE CHART



ᐃᐱᑦᑦᑦᑦᑦᑦᑦᑦᑦᑦ ᐃᑦᑦᑦᑦᑦᑦᑦᑦ
DETAIL OF EXPENDITURES

	ᐃᑦᑦᑦᑦᑦᑦᑦᑦ ᐃᑦᑦᑦᑦᑦᑦᑦᑦ	ᐃᑦᑦᑦᑦᑦᑦᑦᑦ ᐃᑦᑦᑦᑦᑦᑦᑦᑦ	ᐃᑦᑦᑦᑦᑦᑦᑦᑦ ᐃᑦᑦᑦᑦᑦᑦᑦᑦ	ᑦᑦᑦᑦᑦᑦᑦ ᐃᑦᑦᑦᑦᑦᑦᑦᑦᑦᑦ
	2006-2007 Capital Estimates (\$000)	2005-2006 Revised Estimates (\$000)	2005-2006 Capital Estimates (\$000)	2004-2005 Actual Expenditures (\$000)
ᐃᑦᑦᑦᑦᑦᑦᑦᑦ ᐃᑦᑦᑦᑦᑦᑦᑦᑦ	Capital Expenditures			
ᑦᑦᑦᑦᑦᑦᑦ ᐃᑦᑦᑦᑦᑦᑦᑦᑦ		-	-	-
ᐃᑦᑦᑦᑦᑦᑦᑦ ᐱᑦᑦᑦᑦᑦᑦ	19,737	20,651	19,093	26,971
ᑦᑦᑦᑦᑦᑦᑦᑦ ᑦᑦᑦᑦᑦᑦᑦᑦᑦᑦ		-	-	-
ᑦᑦᑦᑦᑦᑦᑦᑦ ᐃᑦᑦᑦᑦᑦᑦᑦᑦᑦᑦ	19,737	20,651	19,093	26,971

ᑎᑦᑦᑦᑦ ᐱᑦᑦᑦᑦᑦᑦ
CORPORATE SERVICES

ᐱᑦᑦᑦᑦᑦᑦᑦᑦ		ᐃᑦᑦᑦᑦᑦᑦ	ᐃᑦᑦᑦᑦᑦᑦ	ᐃᑦᑦᑦᑦᑦᑦ
ᐃᑦᑦᑦᑦᑦᑦ	ᐃᑦᑦᑦᑦᑦᑦᑦᑦᑦᑦ	ᐃᑦᑦᑦᑦᑦᑦᑦ	ᐃᑦᑦᑦᑦᑦᑦᑦᑦᑦᑦ	ᐃᑦᑦᑦᑦᑦᑦᑦᑦᑦᑦ
Project Number	Detail of Capital	2006-2007 Capital Estimates (\$000)	2005-2006 Prior Year Cost (\$000)	2007-2011 Capital Plan (\$000)
ᐃᑦᑦᑦᑦᑦᑦ ᐱᑦᑦᑦᑦᑦᑦ Tangible Assets				
ᑦᑦᑦᑦᑦᑦ Kivalliq Region				
ᑦᑦᑦᑦᑦᑦ Coral Harbour				
509032	ᑦᑦᑦᑦ ᐃᑦᑦᑦᑦᑦᑦᑦᑦ New School	50	-	2,165
509075	ᑦᑦᑦᑦᑦᑦ ᑦᑦᑦᑦᑦᑦᑦᑦᑦᑦᑦᑦ Sakku School Renovations	1,600	-	-
ᑦᑦᑦᑦᑦᑦᑦᑦ Rankin Inlet				
509009	ᐃᑦᑦᑦᑦᑦᑦᑦᑦ ᑦᑦᑦᑦᑦᑦᑦᑦᑦ Student Accommodation	460	-	-
ᑦᑦᑦᑦᑦᑦᑦᑦ ᑦᑦᑦᑦᑦᑦᑦᑦ Total Kivalliq Region		2,110	-	-
ᑦᑦᑦᑦᑦᑦᑦᑦ Kitikmeot Region				
ᑦᑦᑦᑦᑦᑦᑦᑦ Gjoa Haven				
509057	ᑦᑦᑦᑦᑦᑦᑦ ᐃᑦᑦᑦᑦᑦᑦᑦᑦ ᑦᑦᑦᑦᑦᑦᑦᑦᑦᑦᑦᑦ Elementary School Renovation with Gym	3,903	340	6,758
ᑦᑦᑦᑦᑦᑦᑦᑦ ᑦᑦᑦᑦᑦᑦᑦᑦᑦᑦ Total Kitikmeot Region		3,903	-	-
ᑦᑦᑦᑦᑦᑦᑦᑦ ᐃᑦᑦᑦᑦᑦᑦᑦᑦ ᐃᑦᑦᑦᑦᑦᑦᑦᑦᑦᑦᑦᑦ Total Tangible Assets		19,737	-	-



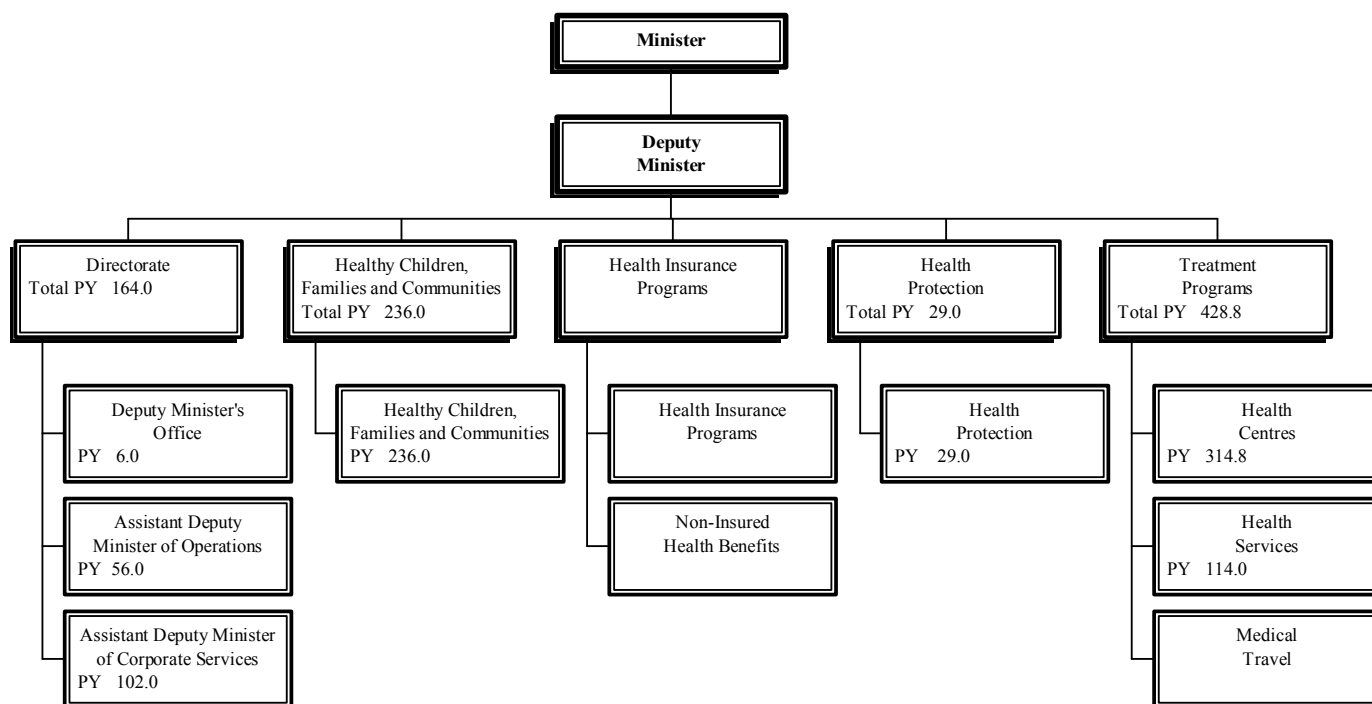
Leona Aglukkaq
Minister

Wayne Govereau
A/Assistant Deputy Minister
Operations

Bernie Blais
Deputy Minister

Eric Whitworth
A/Assistant Deputy Minister
Corporate Services

ACCOUNTING STRUCTURE CHART



ᐱᓐᓂᓐᓂᓐ ᐱᓐᓂᓐᓂᓐ
DETAIL OF EXPENDITURES

	ᐱᓐᓂᓐᓂᓐ ᐱᓐᓂᓐᓂᓐ	ᐱᓐᓂᓐᓂᓐ ᐱᓐᓂᓐᓂᓐ	ᐱᓐᓂᓐᓂᓐ ᐱᓐᓂᓐᓂᓐ	ᐱᓐᓂᓐᓂᓐ ᐱᓐᓂᓐᓂᓐ
	2006-2007 Capital Estimates (\$000)	2005-2006 Revised Estimates (\$000)	2005-2006 Capital Estimates (\$000)	2004-2005 Actual Expenditures (\$000)
ᐱᓐᓂᓐᓂᓐ ᐱᓐᓂᓐᓂᓐ	Capital Expenditures			
ᐱᓐᓂᓐᓂᓐ ᐱᓐᓂᓐᓂᓐ	-	-	-	-
ᐱᓐᓂᓐᓂᓐ ᐱᓐᓂᓐᓂᓐ	22,732	56,018	25,392	29,726
ᐱᓐᓂᓐᓂᓐ ᐱᓐᓂᓐᓂᓐ	-	-	-	-
ᐱᓐᓂᓐᓂᓐ ᐱᓐᓂᓐᓂᓐ ᐱᓐᓂᓐᓂᓐ	22,732	56,018	25,392	29,726



ᐃᑲᑎᑦᑲᑦᑲᑦ



ENVIRONMENT

ᐱᑦᑎᑦᑎᑦᑎᑦᑎᑦ ᐱᑦᑎᑦᑎᑦᑎᑦᑎᑦ
DETAIL OF EXPENDITURES

	ᐱᑦᑎᑦᑎᑦᑎᑦᑎᑦ ᐱᑦᑎᑦᑎᑦᑎᑦᑎᑦ	ᐱᑦᑎᑦᑎᑦᑎᑦᑎᑦ ᐱᑦᑎᑦᑎᑦᑎᑦᑎᑦ	ᐱᑦᑎᑦᑎᑦᑎᑦᑎᑦ ᐱᑦᑎᑦᑎᑦᑎᑦᑎᑦ	ᐱᑦᑎᑦᑎᑦᑎᑦᑎᑦ ᐱᑦᑎᑦᑎᑦᑎᑦᑎᑦ
	2006-2007 Capital Estimates (\$000)	2005-2006 Revised Estimates (\$000)	2005-2006 Capital Estimates (\$000)	2004-2005 Actual Expenditures (\$000)
ᐱᑦᑎᑦᑎᑦᑎᑦᑎᑦ ᐱᑦᑎᑦᑎᑦᑎᑦᑎᑦ	Capital Expenditures			
ᑎᑦᑎᑦᑎᑦᑎᑦᑎᑦ ᐱᑦᑎᑦᑎᑦᑎᑦᑎᑦ	-	-	-	-
ᐱᑦᑎᑦᑎᑦᑎᑦᑎᑦ ᐱᑦᑎᑦᑎᑦᑎᑦᑎᑦ	2,230	3,811	1,856	1,155
ᑎᑦᑎᑦᑎᑦᑎᑦᑎᑦ ᐱᑦᑎᑦᑎᑦᑎᑦᑎᑦ	-	-	-	-
ᑎᑦᑎᑦᑎᑦᑎᑦᑎᑦ ᐱᑦᑎᑦᑎᑦᑎᑦᑎᑦ ᐱᑦᑎᑦᑎᑦᑎᑦᑎᑦ	2,230	3,811	1,856	1,155

ᐱᑦᑎᑦᑎᑦᑎᑦᑎᑦ ᐱᑦᑎᑦᑎᑦᑎᑦᑎᑦ
PROGRAM DEVELOPMENT

ᐱᑦᑎᑦᑎᑦᑎᑦᑎᑦ	ᐱᑦᑎᑦᑎᑦᑎᑦᑎᑦ ᐱᑦᑎᑦᑎᑦᑎᑦᑎᑦ	ᐱᑦᑎᑦᑎᑦᑎᑦᑎᑦ ᐱᑦᑎᑦᑎᑦᑎᑦᑎᑦ	ᐱᑦᑎᑦᑎᑦᑎᑦᑎᑦ ᐱᑦᑎᑦᑎᑦᑎᑦᑎᑦ	ᐱᑦᑎᑦᑎᑦᑎᑦᑎᑦ ᐱᑦᑎᑦᑎᑦᑎᑦᑎᑦ
ᐱᑦᑎᑦᑎᑦᑎᑦᑎᑦ ᐱᑦᑎᑦᑎᑦᑎᑦᑎᑦ	ᐱᑦᑎᑦᑎᑦᑎᑦᑎᑦᑎᑦ ᐱᑦᑎᑦᑎᑦᑎᑦᑎᑦᑎᑦ	2006-2007 Capital Estimates (\$000)	2005-2006 Prior Year Cost (\$000)	2007-2011 Capital Plan (\$000)
ᐱᑦᑎᑦᑎᑦᑎᑦᑎᑦ ᐱᑦᑎᑦᑎᑦᑎᑦᑎᑦ Tangible Assets				
ᐱᑦᑎᑦᑎᑦᑎᑦᑎᑦ Kivalliq Region				
ᐱᑦᑎᑦᑎᑦᑎᑦᑎᑦ Baker Lake				
500078	ᐱᑦᑎᑦᑎᑦᑎᑦᑎᑦ ᐱᑦᑎᑦᑎᑦᑎᑦᑎᑦ ᐱᑦᑎᑦᑎᑦᑎᑦᑎᑦ Thelon and Kazan Heritage Sites	30	-	188
ᐱᑦᑎᑦᑎᑦᑎᑦᑎᑦ Chesterfield Inlet				
511046	ᐱᑦᑎᑦᑎᑦᑎᑦᑎᑦ ᐱᑦᑎᑦᑎᑦᑎᑦᑎᑦ ᐱᑦᑎᑦᑎᑦᑎᑦᑎᑦ Wildlife Office/Garage	50	625	-
ᐱᑦᑎᑦᑎᑦᑎᑦᑎᑦ Rankin Inlet				
500087	ᐱᑦᑎᑦᑎᑦᑎᑦᑎᑦ ᐱᑦᑎᑦᑎᑦᑎᑦᑎᑦ ᐱᑦᑎᑦᑎᑦᑎᑦᑎᑦ Ijiraliq Park/Meliadine	70	101	50
ᐱᑦᑎᑦᑎᑦᑎᑦᑎᑦ ᐱᑦᑎᑦᑎᑦᑎᑦᑎᑦ Kivalliq - Various				
511005	ᐱᑦᑎᑦᑎᑦᑎᑦᑎᑦ ᐱᑦᑎᑦᑎᑦᑎᑦᑎᑦ Mobile Equipment	100	116	665
511043	ᐱᑦᑎᑦᑎᑦᑎᑦᑎᑦ ᐱᑦᑎᑦᑎᑦᑎᑦᑎᑦ ᐱᑦᑎᑦᑎᑦᑎᑦᑎᑦ Parks Centre/Equipment Replacement	15	19	85
ᐱᑦᑎᑦᑎᑦᑎᑦᑎᑦ ᐱᑦᑎᑦᑎᑦᑎᑦᑎᑦ Total Kivalliq Region		265	-	-

ᐱᑦᑎᑦᑎᑦᑎᑦᑎᑦ ᐱᑦᑎᑦᑎᑦᑎᑦᑎᑦ
PROGRAM DEVELOPMENT

ᐱᑦᑎᑦᑎᑦᑎᑦᑎᑦ ᐱᑦᑎᑦᑎᑦᑎᑦᑎᑦ Project Number	ᐱᑦᑎᑦᑎᑦᑎᑦᑎᑦ ᐱᑦᑎᑦᑎᑦᑎᑦᑎᑦ Detail of Capital	ᐱᑦᑎᑦᑎᑦᑎᑦᑎᑦ ᐱᑦᑎᑦᑎᑦᑎᑦᑎᑦ 2006-2007 Capital Estimates (\$000)	ᐱᑦᑎᑦᑎᑦᑎᑦᑎᑦ ᐱᑦᑎᑦᑎᑦᑎᑦᑎᑦ 2005-2006 Prior Year Cost (\$000)	ᐱᑦᑎᑦᑎᑦᑎᑦᑎᑦ ᐱᑦᑎᑦᑎᑦᑎᑦᑎᑦ 2007-2011 Capital Plan (\$000)
ᐱᑦᑎᑦᑎᑦᑎᑦᑎᑦ ᐱᑦᑎᑦᑎᑦᑎᑦᑎᑦ Tangible Assets				
ᑦᑎᑦᑎᑦᑎᑦᑎᑦ Kitikmeot Region				
ᐱᑦᑎᑦᑎᑦᑎᑦᑎᑦ Cambridge Bay				
500079	ᐱᑦᑎᑦᑎᑦᑎᑦᑎᑦ (ᐱᑦᑎᑦᑎᑦᑎᑦᑎᑦ) ᑦᑎᑦᑎᑦᑎᑦᑎᑦᑎᑦ Ovayuq (Mt Pelly) Park	50	105	50
513003	ᐱᑦᑎᑦᑎᑦᑎᑦᑎᑦ ᐱᑦᑎᑦᑎᑦᑎᑦᑎᑦ ᐱᑦᑎᑦᑎᑦᑎᑦᑎᑦᑎᑦ Wildlife Office Replacement	675	-	-
ᐱᑦᑎᑦᑎᑦᑎᑦᑎᑦ Kugaaruk				
511007	ᐱᑦᑎᑦᑎᑦᑎᑦᑎᑦᑎᑦᑎᑦᑎᑦᑎᑦᑎᑦᑎᑦᑎᑦ Attraction Development	40	166	100
ᑦᑎᑦᑎᑦᑎᑦᑎᑦ Kugluktuk				
500271	ᑦᑎᑦᑎᑦᑎᑦᑎᑦ ᑦᑎᑦᑎᑦᑎᑦᑎᑦᑎᑦᑎᑦ Kukluk (Bloody Falls) Park	70	71	203
ᑦᑎᑦᑎᑦᑎᑦᑎᑦ - ᐱᑦᑎᑦᑎᑦᑎᑦᑎᑦ Kitikmeot - Various				
511006	ᐱᑦᑎᑦᑎᑦᑎᑦᑎᑦᑎᑦᑎᑦ ᐱᑦᑎᑦᑎᑦᑎᑦᑎᑦ Mobile Equipment	100	70	426
511044	ᐱᑦᑎᑦᑎᑦᑎᑦᑎᑦ ᐱᑦᑎᑦᑎᑦᑎᑦᑎᑦᑎᑦ ᐱᑦᑎᑦᑎᑦᑎᑦᑎᑦᑎᑦ Parks Centre/Equipment Replacement	15	42	85
ᐱᑦᑎᑦᑎᑦᑎᑦᑎᑦ ᑦᑎᑦᑎᑦᑎᑦᑎᑦ Total Kitikmeot Region		950	-	-
ᐱᑦᑎᑦᑎᑦᑎᑦᑎᑦ ᐱᑦᑎᑦᑎᑦᑎᑦᑎᑦ ᐱᑦᑎᑦᑎᑦᑎᑦᑎᑦᑎᑦ Total Tangible Assets		2,230	-	-





ᓄᓇᓕᓂ ᓂᓴᓂᓄᓂᓂ
ᐱᓂᓕᓂᓂᓂᓂᓂᓂ



COMMUNITY AND
GOVERNMENT
SERVICES

ግልጽ የሥራ ለውጥ ለውጥ
 DETAIL OF EXPENDITURES

	ግልጽ የሥራ ለውጥ ግልጽ የሥራ ለውጥ 2006-2007 Capital Estimates (\$000)	ተሻሻለው የሥራ ለውጥ ግልጽ የሥራ ለውጥ 2005-2006 Revised Estimates (\$000)	ግልጽ የሥራ ለውጥ ግልጽ የሥራ ለውጥ 2005-2006 Capital Estimates (\$000)	ሰጠው የሥራ ለውጥ ግልጽ የሥራ ለውጥ 2004-2005 Actual Expenditures (\$000)
ግልጽ የሥራ ለውጥ ለውጥ	Capital Expenditures			
ጋራ ለውጥ ለውጥ	5,273	10,225	5,273	3,314
ግልጽ የሥራ ለውጥ ለውጥ	16,424	27,746	15,900	22,958
ኮምፒዩተር ስልጠና ለውጥ ለውጥ	-	-	-	-
ጠቅላላ ግልጽ የሥራ ለውጥ ለውጥ	21,697	37,971	21,173	26,272

ᓄᓄᓂᓄᓂᓄ ᓄᓄᓂᓄᓂᓄ ᓄᓄᓂᓄᓂᓄ ᓄᓄᓂᓄᓂᓄ ᓄᓄᓂᓄᓂᓄ

CAPITAL PLANNING AND TECHNICAL SERVICES

ᓂᓴᓂᓄᓂᓄᓂᓄ		ᓄᓄᓂᓄᓂᓄ	ᓄᓄᓂᓄᓂᓄ	ᓄᓄᓂᓄᓂᓄ
ᓄᓄᓂᓄᓂᓄᓂᓄ	ᓄᓄᓂᓄᓂᓄᓂᓄᓂᓄ	ᓄᓄᓂᓄᓂᓄᓂᓄ	ᓄᓄᓂᓄᓂᓄᓂᓄᓂᓄ	ᓄᓄᓂᓄᓂᓄᓂᓄᓂᓄ
ᓄᓄᓂᓄᓂᓄᓂᓄ	ᓄᓄᓂᓄᓂᓄᓂᓄᓂᓄᓂᓄ	2006-2007	2005-2006	2007-2011
Project	Detail of Capital	Capital	Prior	Capital
Number		Estimates	Year Cost	Plan
		(\$000)	(\$000)	(\$000)
ᓄᓄᓂᓄᓂᓄᓂᓄ ᓄᓄᓂᓄᓂᓄᓂᓄ				
Grants and Contributions				
<i>ᓄᓄᓂᓄᓂᓄᓂᓄ</i>				
Kivalliq Region				
<i>ᓄᓄᓂᓄᓂᓄᓂᓄ - ᓄᓄᓂᓄᓂᓄᓂᓄ</i>				
Kivalliq - Various				
500031	ᓄᓄᓂᓄᓂᓄᓂᓄᓂᓄᓂᓄ ᓄᓄᓂᓄᓂᓄᓂᓄᓂᓄᓂᓄᓂᓄ	262	262	1,048
	Regional Block Funding			
514052	ᓄᓄᓂᓄᓂᓄᓂᓄᓂᓄ ᓄᓄᓂᓄᓂᓄᓂᓄᓂᓄᓂᓄ	40	40	160
	Mobile Equipment Repair			
514054	ᓄᓄᓂᓄᓂᓄᓂᓄᓂᓄ ᓄᓄᓂᓄᓂᓄᓂᓄᓂᓄ	70	75	280
	Community Planning			
ᓄᓄᓂᓄᓂᓄᓂᓄᓂᓄ ᓄᓄᓂᓄᓂᓄᓂᓄ		372	-	-
Total Kivalliq Region				

ᐱᓱᓕᓴᓕᓄᓂᓄᓗ ᐱᓱᓕᓴᓕᓄᓂᓄᓗ ᐱᓱᓕᓴᓕᓄᓂᓄᓗ ᐱᓱᓕᓴᓕᓄᓂᓄᓗ

CAPITAL PLANNING AND TECHNICAL SERVICES

ᓱᓱᓕᓴᓕᓄᓂᓄᓗ ᐱᓱᓕᓴᓕᓄᓂᓄᓗ		ᐱᓱᓕᓴᓕᓄᓂᓄᓗ	ᐱᓱᓕᓴᓕᓄᓂᓄᓗ	ᐱᓱᓕᓴᓕᓄᓂᓄᓗ
ᐱᓱᓕᓴᓕᓄᓂᓄᓗ ᐱᓱᓕᓴᓕᓄᓂᓄᓗ	ᐱᓱᓕᓴᓕᓄᓂᓄᓗ ᐱᓱᓕᓴᓕᓄᓂᓄᓗ	ᐱᓱᓕᓴᓕᓄᓂᓄᓗ	ᐱᓱᓕᓴᓕᓄᓂᓄᓗ	ᐱᓱᓕᓴᓕᓄᓂᓄᓗ
ᐱᓱᓕᓴᓕᓄᓂᓄᓗ Project Number	ᐱᓱᓕᓴᓕᓄᓂᓄᓗ ᐱᓱᓕᓴᓕᓄᓂᓄᓗ Detail of Capital	2006-2007 Capital Estimates (\$000)	2005-2006 Prior Year Cost (\$000)	2007-2011 Capital Plan (\$000)
ᐱᓱᓕᓴᓕᓄᓂᓄᓗ ᐱᓱᓕᓴᓕᓄᓂᓄᓗ				
Tangible Assets				
ᐱᓱᓕᓴᓕᓄᓂᓄᓗ ᐱᓱᓕᓴᓕᓄᓂᓄᓗ				
Headquarters Region				
ᓄᓇᓕᓂ - ᓄᓇᓕᓂᓄᓗ				
Nunavut - Various				
514058	ᓄᓇᓕᓂᓄᓗ ᐱᓱᓕᓴᓕᓄᓂᓄᓗ Geomatics	175	173	700
514101	ᐱᓱᓕᓴᓕᓄᓂᓄᓗ ᐱᓱᓕᓴᓕᓄᓂᓄᓗ ᐱᓱᓕᓴᓕᓄᓂᓄᓗ Quarry Management Program	167	-	84
ᓄᓇᓕᓂ ᐱᓱᓕᓴᓕᓄᓂᓄᓗ ᐱᓱᓕᓴᓕᓄᓂᓄᓗ		342	-	-

ᓄᓇᓂᓂ ᓄᓇᓂᓂ ᓄᓇᓂᓂ ᓄᓇᓂᓂ
CAPITAL PLANNING AND TECHNICAL SERVICES

ᓄᓇᓂᓂ ᓄᓇᓂᓂ	ᓄᓇᓂᓂ ᓄᓇᓂᓂ	ᓄᓇᓂᓂ ᓄᓇᓂᓂ	ᓄᓇᓂᓂ ᓄᓇᓂᓂ	ᓄᓇᓂᓂ ᓄᓇᓂᓂ
ᓄᓇᓂᓂ ᓄᓇᓂᓂ	ᓄᓇᓂᓂ ᓄᓇᓂᓂ	ᓄᓇᓂᓂ ᓄᓇᓂᓂ	ᓄᓇᓂᓂ ᓄᓇᓂᓂ	ᓄᓇᓂᓂ ᓄᓇᓂᓂ
Project Number	Detail of Capital	2006-2007 Capital Estimates (\$000)	2005-2006 Prior Year Cost (\$000)	2007-2011 Capital Plan (\$000)
ᓄᓇᓂᓂ ᓄᓇᓂᓂ				
Tangible Assets				
ᓄᓇᓂᓂ ᓄᓇᓂᓂ				
Qikiqtaaluk Region				
ᓄᓇᓂᓂ ᓄᓇᓂᓂ				
Arctic Bay				
514102	ᓄᓇᓂᓂ ᓄᓇᓂᓂ Loader	260	-	-
ᓄᓇᓂᓂ ᓄᓇᓂᓂ				
Cape Dorset				
500161	ᓄᓇᓂᓂ ᓄᓇᓂᓂ ᓄᓇᓂᓂ Sewage Lagoon Repairs	750	2,487	-
514103	ᓄᓇᓂᓂ ᓄᓇᓂᓂ ᓄᓇᓂᓂ Bulky Metals Disposal Site	350	-	-
ᓄᓇᓂᓂ ᓄᓇᓂᓂ				
Clyde River				
514067	ᓄᓇᓂᓂ ᓄᓇᓂᓂ ᓄᓇᓂᓂ ᓄᓇᓂᓂ Repair Water Pump and Heat Tracing	70	35	-
ᓄᓇᓂᓂ ᓄᓇᓂᓂ				
Igloolik				
514104	ᓄᓇᓂᓂ ᓄᓇᓂᓂ Vehicle	40	-	-
ᓄᓇᓂᓂ ᓄᓇᓂᓂ				
Kimmirut				
514105	ᓄᓇᓂᓂ ᓄᓇᓂᓂ Aggregate Quarry Access Road	480	-	-

ᓂᓇᓂᓄᓐᓂᓂᓐ ᓂᓇᓂᓄᓐᓂᓂᓐ ᓂᓇᓂᓄᓐᓂᓂᓐ ᓂᓇᓂᓄᓐᓂᓂᓐ
CAPITAL PLANNING AND TECHNICAL SERVICES

ᓂᓇᓂᓄᓐᓂᓂᓐ	ᓂᓇᓂᓄᓐᓂᓂᓐ	ᓂᓇᓂᓄᓐᓂᓂᓐ	ᓂᓇᓂᓄᓐᓂᓂᓐ	ᓂᓇᓂᓄᓐᓂᓂᓐ
ᓂᓇᓂᓄᓐᓂᓂᓐ	ᓂᓇᓂᓄᓐᓂᓂᓐ	ᓂᓇᓂᓄᓐᓂᓂᓐ	ᓂᓇᓂᓄᓐᓂᓂᓐ	ᓂᓇᓂᓄᓐᓂᓂᓐ
ᓂᓇᓂᓄᓐᓂᓂᓐ	ᓂᓇᓂᓄᓐᓂᓂᓐ	ᓂᓇᓂᓄᓐᓂᓂᓐ	ᓂᓇᓂᓄᓐᓂᓂᓐ	ᓂᓇᓂᓄᓐᓂᓂᓐ
ᓂᓇᓂᓄᓐᓂᓂᓐ	ᓂᓇᓂᓄᓐᓂᓂᓐ	ᓂᓇᓂᓄᓐᓂᓂᓐ	ᓂᓇᓂᓄᓐᓂᓂᓐ	ᓂᓇᓂᓄᓐᓂᓂᓐ
ᓂᓇᓂᓄᓐᓂᓂᓐ				
Tangible Assets				
ᓂᓇᓂᓄᓐᓂᓂᓐ				
Rankin Inlet				
514057	ᓂᓇᓂᓄᓐᓂᓂᓐ ᓂᓇᓂᓄᓐᓂᓂᓐ	750	1,500	-
	Sewage Treatment Plant			
514111	ᓂᓇᓂᓄᓐᓂᓂᓐ	280	-	-
	Loader			
514112	ᓂᓇᓂᓄᓐᓂᓂᓐ t	40	-	120
	Vehicle			
ᓂᓇᓂᓄᓐᓂᓂᓐ				
Whale Cove				
507362	ᓂᓇᓂᓄᓐᓂᓂᓐ	280	-	-
	Fire Truck			
ᓂᓇᓂᓄᓐᓂᓂᓐ				
Kivalliq - Various				
507307	ᓂᓇᓂᓄᓐᓂᓂᓐ	56	56	224
	Granular Materials			
506005	ᓂᓇᓂᓄᓐᓂᓂᓐ ᓂᓇᓂᓄᓐᓂᓂᓐ	70	70	280
	Minor Capital Projects			
ᓂᓇᓂᓄᓐᓂᓂᓐ				
Total Kivalliq Region		2,088	-	-

ᐱᓴᓕᓴᓴᓂᓄᓂᓗ ᐱᓴᓕᓴᓴᓂᓄᓂᓗ ᐱᓴᓕᓴᓴᓂᓄᓂᓗ ᐱᓴᓕᓴᓴᓂᓄᓂᓗ
CAPITAL PLANNING AND TECHNICAL SERVICES

ᐱᓴᓕᓴᓴᓂᓄᓂᓗ ᐱᓴᓕᓴᓴᓂᓄᓂᓗ Project Number	ᐱᓴᓕᓴᓴᓂᓄᓂᓗ ᐱᓴᓕᓴᓴᓂᓄᓂᓗ Detail of Capital	ᐱᓴᓕᓴᓴᓂᓄᓂᓗ ᐱᓴᓕᓴᓴᓂᓄᓂᓗ 2006-2007 Capital Estimates (\$000)	ᐱᓴᓕᓴᓴᓂᓄᓂᓗ ᐱᓴᓕᓴᓴᓂᓄᓂᓗ ᐱᓴᓕᓴᓴᓂᓄᓂᓗ ᐱᓴᓕᓴᓴᓂᓄᓂᓗ 2005-2006 Prior Year Cost (\$000)	ᐱᓴᓕᓴᓴᓂᓄᓂᓗ ᐱᓴᓕᓴᓴᓂᓄᓂᓗ 2007-2011 Capital Plan (\$000)
ᐱᓴᓕᓴᓴᓂᓄᓂᓗ ᐱᓴᓂᓄᓂᓗ Tangible Assets				
ᓴᓴᓂᓄᓂᓗ Kitikmeot Region				
ᐱᓴᓂᓄᓂᓗ ᐱᓴᓂᓄᓂᓗ Cambridge Bay				
514113	ᐱᓴᓂᓄᓂᓗ ᐱᓴᓂᓄᓂᓗ ᐱᓴᓂᓄᓂᓗ Solid Waste Site Fencing	250	-	500
ᐱᓴᓂᓄᓂᓗ ᐱᓴᓂᓄᓂᓗ Gjoa Haven				
507544	ᓄᓇᓕᓐᓂ ᐱᓴᓂᓄᓂᓗ ᐱᓴᓂᓄᓂᓗ Community Hall	1,250	125	25
ᐱᓴᓂᓄᓂᓗ ᐱᓴᓂᓄᓂᓗ Kugaaruk				
507545	ᐱᓴᓂᓄᓂᓗ ᐱᓴᓂᓄᓂᓗ Sewage Lagoon	1,250	648	-
514114	ᐱᓴᓂᓄᓂᓗ ᐱᓴᓂᓄᓂᓗ ᐱᓴᓂᓄᓂᓗ Grader	250	-	-

ᓂᓴᓴᓂᓄᓂᓂ ᓂᓴᓴᓂᓄᓂᓂ ᓂᓴᓴᓂᓄᓂᓂ ᓂᓴᓴᓂᓄᓂᓂ

CAPITAL PLANNING AND TECHNICAL SERVICES

ᓂᓴᓴᓂᓄᓂᓂ	ᓂᓴᓴᓂᓄᓂᓂ ᓂᓴᓴᓂᓄᓂᓂ	ᓂᓴᓴᓂᓄᓂᓂ ᓂᓴᓴᓂᓄᓂᓂ	ᓂᓴᓴᓂᓄᓂᓂ ᓂᓴᓴᓂᓄᓂᓂ	ᓂᓴᓴᓂᓄᓂᓂ ᓂᓴᓴᓂᓄᓂᓂ
ᓂᓴᓴᓂᓄᓂᓂ Project Number	ᓂᓴᓴᓂᓄᓂᓂ ᓂᓴᓴᓂᓄᓂᓂ Detail of Capital	2006-2007 Capital Estimates (\$000)	2005-2006 Prior Year Cost (\$000)	2007-2011 Capital Plan (\$000)
ᓂᓴᓴᓂᓄᓂᓂ ᓂᓴᓴᓂᓄᓂᓂ Tangible Assets				
ᓂᓴᓴᓂᓄᓂᓂ ᓂᓴᓴᓂᓄᓂᓂ Kugluktuk				
507537	ᓂᓴᓴᓂᓄᓂᓂ Sewage Lagoon	100	872	-
507546	ᓂᓴᓴᓂᓄᓂᓂ ᓂᓴᓴᓂᓄᓂᓂ Water Treatment Plant	250	263	1,450
514115	ᓂᓴᓴᓂᓄᓂᓂ ᓂᓴᓴᓂᓄᓂᓂ (ᓂᓴᓴᓂᓄᓂᓂ ᓂᓴᓴᓂᓄᓂᓂ)	100	-	-
514116	ᓂᓴᓴᓂᓄᓂᓂ Vehicle	40	-	-
ᓂᓴᓴᓂᓄᓂᓂ ᓂᓴᓴᓂᓄᓂᓂ Taloyoak				
514117	ᓂᓴᓴᓂᓄᓂᓂ ᓂᓴᓴᓂᓄᓂᓂ Water System Improvement	200	-	2,062
507503	ᓂᓴᓴᓂᓄᓂᓂ ᓂᓴᓴᓂᓄᓂᓂ Granular Materials	56	56	224
506034	ᓂᓴᓴᓂᓄᓂᓂ ᓂᓴᓴᓂᓄᓂᓂ Minor Capital Projects	70	155	280
ᓂᓴᓴᓂᓄᓂᓂ ᓂᓴᓴᓂᓄᓂᓂ Total Kitikmeot Region		3,816	-	-
ᓂᓴᓴᓂᓄᓂᓂ ᓂᓴᓴᓂᓄᓂᓂ ᓂᓴᓴᓂᓄᓂᓂ Total Tangible Assets		11,904	-	-

ᐅᓴᓴᓄᓂᓂᓂ ᓂᓴᓴᓄᓂᓂᓂ

PETROLEUM PRODUCTS DIVISION

ᓂᓴᓴᓄᓂᓂᓂ ᐱᓴᓴᓄᓂᓂᓂ ᐱᓴᓴᓄᓂᓂᓂ Project Number	ᐱᓴᓴᓄᓂᓂᓂ ᓂᓴᓴᓄᓂᓂᓂ Detail of Capital	ᐱᓴᓴᓄᓂᓂᓂ ᐱᓴᓴᓄᓂᓂᓂ 2006-2007 Capital Estimates (\$000)	ᐱᓴᓴᓄᓂᓂᓂ ᐱᓴᓴᓄᓂᓂᓂ 2005-2006 Prior Year Cost (\$000)	ᐱᓴᓴᓄᓂᓂᓂ ᐱᓴᓴᓄᓂᓂᓂ 2007-2011 Capital Plan (\$000)
ᐱᓴᓴᓄᓂᓂᓂ ᓂᓴᓴᓄᓂᓂᓂ Tangible Assets				
ᐱᓴᓴᓄᓂᓂᓂ ᓂᓴᓴᓄᓂᓂᓂ Headquarters Region				
ᓄᓄᓂᓂᓂ - ᓄᓄᓂᓂᓂᓂ Nunavut - Various				
506019	ᓄᓄᓂᓂᓂᓂᓂ ᓂᓴᓴᓄᓂᓂᓂ ᓂᓴᓴᓄᓂᓂᓂ Spill Response Equipment	100	-	200
ᓂᓴᓴᓄᓂᓂᓂ ᐱᓴᓴᓄᓂᓂᓂᓂᓂᓂᓂᓂ Total Headquarters Region		100	-	-
ᓄᓄᓂᓂᓂᓂᓂ Qikiqtaaluk Region				
ᓂᓴᓴᓄᓂᓂᓂᓂ Resolute Bay				
506028	ᐅᓴᓴᓄᓂᓂᓂᓂᓂ ᓄᓄᓂᓂᓂᓂᓂᓂᓂᓂ ᐱᓴᓴᓄᓂᓂᓂᓂ Tank Farm Capacities and Code Compliance	1,720	2,326	4,260
ᓂᓴᓴᓄᓂᓂᓂᓂ ᓄᓄᓂᓂᓂᓂᓂᓂᓂᓂᓂ Total Qikiqtaaluk Region		1,720	-	-



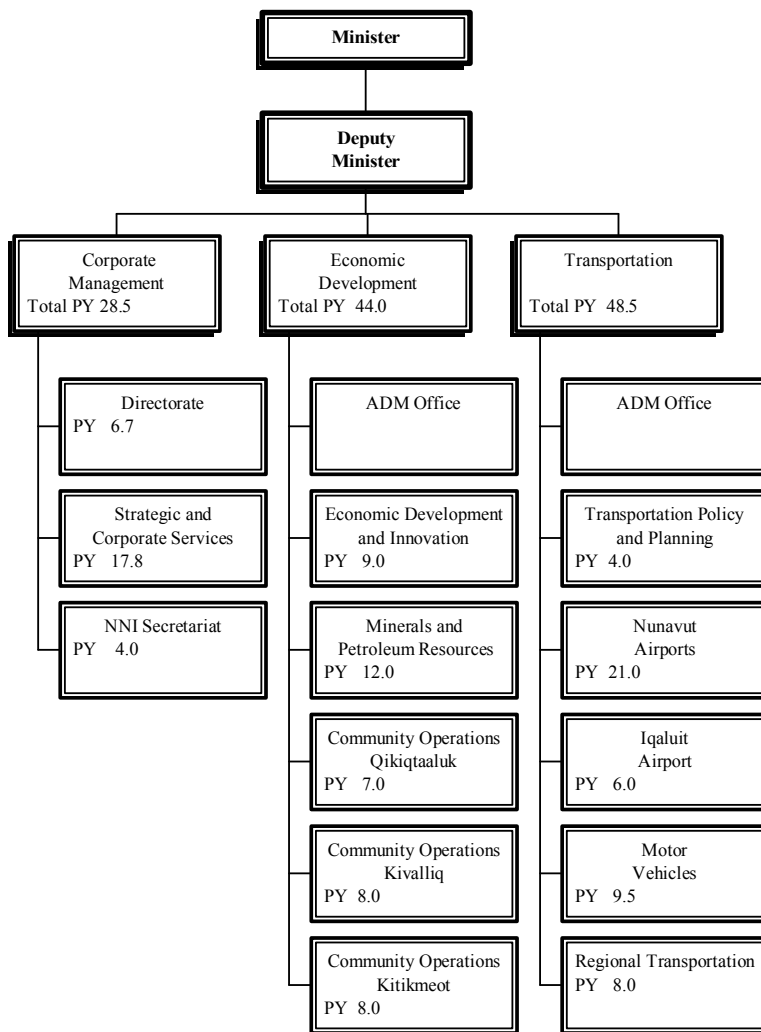
Peter Kilabuk
Minister

Methusalah Kunuk
Assistant Deputy Minister
Transportation

Alex Campbell
Deputy Minister

Rosemary Keenainak
Assistant Deputy Minister
Economic Development

ACCOUNTING STRUCTURE CHART



ᐸᓕᓕᓕᓕᓕᓕᓕᓕᓕ

TRANSPORTATION

ᐱᓕᓕᐸᐸᓕᓕᓕᓕᓕᓕᓕ ᐸᓕᓕᓕᓕᓕᓕᓕᓕᓕᓕ Project Number	ᐸᓕᓕᓕᓕᓕᓕᓕᓕᓕᓕᓕ Detail of Capital	ᐸᓕᓕᓕᓕᓕᓕᓕᓕᓕ	ᐸᓕᓕᓕᓕᓕᓕᓕᓕᓕ	ᐸᓕᓕᓕᓕᓕᓕᓕᓕᓕ
		2006-2007 Capital Estimates (\$000)	2005-2006 Prior Year Cost (\$000)	2007-2011 Capital Plan (\$000)
ᓕᓕᓕᓕᓕᓕᓕᓕᓕᓕᓕ ᐸᓕᓕᓕᓕᓕᓕᓕᓕᓕ				
Grants and Contributions				
<i>ᓕᓕᓕᓕᓕᓕᓕᓕᓕᓕᓕ</i>				
Kitikmeot Region				
<i>ᓕᓕᓕᓕᓕᓕᓕᓕᓕᓕᓕ</i>				
Bathurst Inlet				
507510	ᓕᓕᓕᓕᓕᓕᓕᓕᓕᓕᓕ ᐸᓕᓕᓕᓕᓕᓕᓕ ᐸᓕᓕᓕᓕᓕᓕᓕᓕᓕᓕ	100	100	75
ᓕᓕᓕᓕᓕᓕᓕᓕᓕᓕᓕᓕᓕ Total Kitikmeot Region		100	-	-
ᓕᓕᓕᓕᓕᓕᓕᓕᓕᓕᓕᓕᓕ ᐸᓕᓕᓕᓕᓕᓕᓕᓕᓕᓕᓕᓕ		100	-	-
Total Grants and Contributions		100	-	-

ᐃᓄᓄᓕᓕᓗᓕ
TRANSPORTATION

ᐱᓕᓕᓗᓕᓕᓗᓕ ᓄᓗᓄᓗᓕ Project Number	ᓄᓗᓄᓗᓕᓗᓕ Detail of Capital	ᓄᓗᓄᓗᓕ 2006-2007 Capital Estimates (\$000)	ᓄᓗᓄᓗᓕ 2005-2006 Prior Year Cost (\$000)	ᓄᓗᓄᓗᓕ 2007-2011 Capital Plan (\$000)
ᓄᓗᓄᓗᓕ ᐱᓄᓄᓗᓕ Tangible Assets				
515021	ᓄᓗᓄᓗᓕ AME Packer	20	-	-
ᓄᓄᓄᓗᓕ Nanisivik				
500059	ᓄᓄᓄᓗᓕ ᓄᓗᓄᓗᓕᓗᓕ Highway Upgrades	100	100	253
ᓄᓄᓄᓗᓕ Resolute Bay				
515023	ᓄᓄᓄᓗᓕ Wheel Loader	316	-	-
ᓄᓄᓄᓗᓕ ᓄᓄᓄᓗᓕᓗᓕ Total Qikiqtaaluk Region		6,201	-	-
ᓄᓄᓄᓗᓕ Kivalliq Region				
ᓄᓄᓄᓗᓕ Rankin Inlet				
515017	ᓄᓄᓄᓗᓕ AME Plow Truck	235	-	-
ᓄᓄᓄᓗᓕ Repulse Bay				
515022	ᓄᓄᓄᓗᓕ AME Packer	20	-	-
ᓄᓄᓄᓗᓕ Whale Cove				
515020	ᓄᓄᓄᓗᓕ Wheel Loader	320	-	-
ᓄᓄᓄᓗᓕ ᓄᓄᓄᓗᓕ Total Kivalliq Region		575	-	-



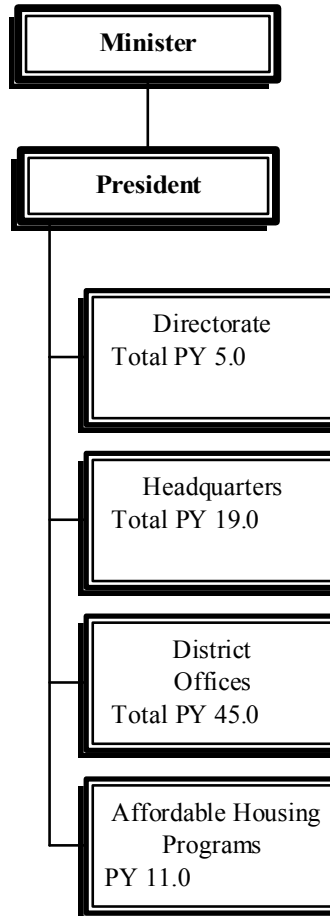


ᑎᓄᓐᓂᓐ ᑕᓄᓐ ᑕᓄᓐ ᑕᓄᓐ ᑕᓄᓐ

Olayuk Akesuk
Minister

Peter Scott
President

ACCOUNTING STRUCTURE CHART



ᓄᓇᓂᓄᓐ ᐃᓕᓂᓂᓄᓐᓂᓄᓐ

NUNAVUT HOUSING CORPORATION

ᐃᓂᓂᓄᓐ ᓄᓇᓂᓄᓐᓂᓄᓐ Detail of Capital	ᐃᓂᓂᓄᓐ ᐃᓂᓂᓄᓐ 2006-2007 Capital Estimates (\$000)	ᐃᓂᓂᓄᓐ ᐃᓂᓂᓄᓐ 2005-2006 Prior Year Cost (\$000)	ᐃᓂᓂᓄᓐ ᐃᓂᓂᓄᓐ 2007-2011 Capital Plan (\$000)
ᓂᓄᓂᓄᓐ ᐃᓂᓂᓄᓐ Grants and Contributions			
<i>ᓂᓄᓂᓄᓐ ᓄᓇᓂᓄᓐ</i> Headquarters Region			
<i>ᓄᓇᓂᓄᓐ - ᓄᓂᓂᓄᓐ</i> Nunavut - Various			
ᐃᓂᓂᓄᓐ ᓂᓄᓂᓄᓐ ᓂᓄᓂᓄᓐ Fire Damaged Replacement	1,000	1,000	4,000
ᐃᓂᓂᓄᓐ ᐃᓂᓂᓄᓐ Public Housing	5,000	-	-
M&I/ᐃᓂᓂᓄᓐ - ᐃᓂᓂᓄᓐ ᐃᓂᓂᓄᓐ M&I/Retrofit - Staff Housing	-	-	800
ᓂᓄᓂᓄᓐ ᐃᓂᓂᓄᓐ Material Assistance Program	1,210	-	621
ᐃᓂᓂᓄᓐ ᐃᓂᓂᓄᓐ ᓄᓂᓂᓄᓐ Tenant to Owner Program	1,000	-	-
ᓂᓂᓂᓄᓐ ᓂᓄᓂᓄᓐ ᓄᓂᓂᓄᓐ Total Headquarters Region	8,210	-	-

ᓄᓇᓂᓄᓐ ᐃᓚᓂᓚᓂᓐᓂᓐᓂᓐ

NUNAVUT HOUSING CORPORATION

ᐃᓂᓂᓂᓂᓐ ᓄᓇᓂᓂᓂᓐ Detail of Capital	ᐃᓂᓂᓂᓐ ᐃᓂᓂᓂᓐ 2006-2007 Capital Estimates (\$000)	ᐃᓂᓂᓂᓐ ᐃᓂᓂᓂᓐ 2005-2006 Prior Year Cost (\$000)	ᐃᓂᓂᓂᓐ ᐃᓂᓂᓂᓐ 2007-2011 Capital Plan (\$000)
ᓂᓂᓂᓂᓐ ᐃᓂᓂᓂᓐ Grants and Contributions			
ᓂᓂᓂᓂᓐ ᐃᓂᓂᓂᓐ Clyde River			
ᓂᓂᓂᓂᓐ ᐃᓂᓂᓂᓐ ᐃᓂᓂᓂᓐ / ᓂᓂᓂᓂᓐ ᐃᓂᓂᓂᓐ ᓂᓂᓂᓂᓐ	271	229	1,060
M&I/Retrofit - GN Funds			
ᐃᓂᓂᓂᓐ ᐃᓂᓂᓂᓐ	17	8	68
Mobile Equipment			
ᐃᓂᓂᓂᓐ ᐃᓂᓂᓂᓐ Grise Fiord			
ᓂᓂᓂᓂᓐ ᐃᓂᓂᓂᓐ ᐃᓂᓂᓂᓐ / ᓂᓂᓂᓂᓐ ᐃᓂᓂᓂᓐ ᓂᓂᓂᓂᓐ	113	98	433
M&I/Retrofit - GN Funds			
ᐃᓂᓂᓂᓐ ᐃᓂᓂᓂᓐ	8	4	32
Mobile Equipment			
ᓂᓂᓂᓂᓐ ᐃᓂᓂᓂᓐ Hall Beach			
ᓂᓂᓂᓂᓐ ᐃᓂᓂᓂᓐ ᐃᓂᓂᓂᓐ / ᓂᓂᓂᓂᓐ ᐃᓂᓂᓂᓐ ᓂᓂᓂᓂᓐ	187	163	767
M&I/Retrofit - GN Funds			
ᐃᓂᓂᓂᓐ ᐃᓂᓂᓂᓐ	12	8	48
Mobile Equipment			
ᐃᓂᓂᓂᓐ ᐃᓂᓂᓂᓐ Igloolik			
ᓂᓂᓂᓂᓐ ᐃᓂᓂᓂᓐ ᐃᓂᓂᓂᓐ / ᓂᓂᓂᓂᓐ ᐃᓂᓂᓂᓐ ᓂᓂᓂᓂᓐ	389	327	1,524
M&I/Retrofit - GN Funds			
ᐃᓂᓂᓂᓐ ᐃᓂᓂᓂᓐ	27	19	108
Mobile Equipment			

ᓄᓇᑭᓴᑦ ᐃᓪᓗᑕᓚᓴᑦᐱᓄᑦ

NUNAVUT HOUSING CORPORATION

ᐱᓄᓗᑕᓴᑦ ᓄᓗᓇᐃᓪᓗᑕᓴᑦ Detail of Capital	ᐱᓄᓗᑕᓴᑦ ᐱᓄᓗᑕᓴᑦ 2006-2007 Capital Estimates (\$000)	ᐱᓄᓗᑕᓴᑦ ᐱᓄᓗᑕᓴᑦ 2005-2006 Prior Year Cost (\$000)	ᐱᓄᓗᑕᓴᑦ ᐱᓄᓗᑕᓴᑦ 2007-2011 Capital Plan (\$000)
ᓴᓄᓗᑕᓴᑦ ᐱᓄᓗᑕᓴᑦ Grants and Contributions			
ᐃᓴᓄᓗᑕᓴᑦ Iqaluit			
ᓴᓄᓗᑕᓴᑦ ᐱᓄᓗᑕᓴᑦ ᐱᓄᓗᑕᓴᑦ / ᓴᓄᓗᑕᓴᑦ ᐱᓄᓗᑕᓴᑦ ᓴᓄᓗᑕᓴᑦ M&I/Retrofit - GN Funds	717	623	2,919
ᐃᓴᓄᓗᑕᓴᑦ ᐱᓄᓗᑕᓴᑦ Mobile Equipment	55	37	220
ᓴᓄᓗᑕᓴᑦ Kimmirut			
ᓴᓄᓗᑕᓴᑦ ᐱᓄᓗᑕᓴᑦ ᐱᓄᓗᑕᓴᑦ / ᓴᓄᓗᑕᓴᑦ ᐱᓄᓗᑕᓴᑦ ᓴᓄᓗᑕᓴᑦ M&I/Retrofit - GN Funds	113	98	547
ᐃᓴᓄᓗᑕᓴᑦ ᐱᓄᓗᑕᓴᑦ Mobile Equipment	9	6	36
ᐱᓄᓗᑕᓴᑦ Pangnirtung			
ᓴᓄᓗᑕᓴᑦ ᐱᓄᓗᑕᓴᑦ ᐱᓄᓗᑕᓴᑦ / ᓴᓄᓗᑕᓴᑦ ᐱᓄᓗᑕᓴᑦ ᓴᓄᓗᑕᓴᑦ M&I/Retrofit - GN Funds	400	360	1,855
ᐃᓴᓄᓗᑕᓴᑦ ᐱᓄᓗᑕᓴᑦ Mobile Equipment	32	23	128
ᓴᓄᓗᑕᓴᑦ Pond Inlet			
ᓴᓄᓗᑕᓴᑦ ᐱᓄᓗᑕᓴᑦ ᐱᓄᓗᑕᓴᑦ / ᓴᓄᓗᑕᓴᑦ ᐱᓄᓗᑕᓴᑦ ᓴᓄᓗᑕᓴᑦ M&I/Retrofit - GN Funds	415	360	1,673
ᐃᓴᓄᓗᑕᓴᑦ ᐱᓄᓗᑕᓴᑦ Mobile Equipment	26	18	104

ᓄᓇᓂᓄᓐ ᐃᓕᓕᓕᓐᓂᓐᓂᓐ

NUNAVUT HOUSING CORPORATION

ᐃᓕᓕᓕᓐᓂᓐ ᓄᓇᓂᓄᓐᓂᓐ Detail of Capital	ᐃᓕᓕᓕᓐᓂᓐ ᐃᓕᓕᓕᓐᓂᓐ 2006-2007 Capital Estimates (\$000)	ᐃᓕᓕᓕᓐᓂᓐ ᐃᓕᓕᓕᓐᓂᓐ 2005-2006 Prior Year Cost (\$000)	ᐃᓕᓕᓕᓐᓂᓐ ᐃᓕᓕᓕᓐᓂᓐ 2007-2011 Capital Plan (\$000)
ᓂᓐᓂᓐ ᐃᓕᓕᓐᓂᓐ Grants and Contributions			
<i>ᓂᓐᓂᓐ</i> Kivalliq Region			
ᐃᓕᓕᓐᓂᓐ Arviat			
ᓂᓐᓂᓐ ᐃᓕᓕᓐᓂᓐ ᐃᓕᓕᓐᓂᓐ / ᓂᓐᓂᓐ ᐃᓕᓕᓐᓂᓐ ᓂᓐᓂᓐ ᐃᓕᓕᓐᓂᓐ M&I/Retrofit - GN Funds	380	357	1,702
ᐃᓕᓕᓐᓂᓐ ᐃᓕᓕᓐᓂᓐ Mobile Equipment	34	25	136
ᓂᓐᓂᓐᓂᓐ Baker Lake			
ᓂᓐᓂᓐ ᐃᓕᓕᓐᓂᓐ ᐃᓕᓕᓐᓂᓐ / ᓂᓐᓂᓐ ᐃᓕᓕᓐᓂᓐ ᓂᓐᓂᓐ ᐃᓕᓕᓐᓂᓐ M&I/Retrofit - GN Funds	379	357	1,553
ᐃᓕᓕᓐᓂᓐ ᐃᓕᓕᓐᓂᓐ Mobile Equipment	40	28	160
ᐃᓕᓕᓐᓂᓐ Chesterfield Inlet			
ᓂᓐᓂᓐ ᐃᓕᓕᓐᓂᓐ ᐃᓕᓕᓐᓂᓐ / ᓂᓐᓂᓐ ᐃᓕᓕᓐᓂᓐ ᓂᓐᓂᓐ ᐃᓕᓕᓐᓂᓐ M&I/Retrofit - GN Funds	188	178	806
ᐃᓕᓕᓐᓂᓐ ᐃᓕᓕᓐᓂᓐ ᐃᓕᓕᓐᓂᓐ ᐃᓕᓕᓐᓂᓐ (ᓂᓐᓂᓐ) Staff Housing New Supply (2 units)	474	-	-
ᐃᓕᓕᓐᓂᓐ ᐃᓕᓕᓐᓂᓐ Mobile Equipment	9	6	36
ᓂᓐᓂᓐ Coral Harbour			
ᓂᓐᓂᓐ ᐃᓕᓕᓐᓂᓐ ᐃᓕᓕᓐᓂᓐ / ᓂᓐᓂᓐ ᐃᓕᓕᓐᓂᓐ ᓂᓐᓂᓐ ᐃᓕᓕᓐᓂᓐ M&I/Retrofit - GN Funds	188	178	956
ᐃᓕᓕᓐᓂᓐ ᐃᓕᓕᓐᓂᓐ Mobile Equipment	17	9	68



GLOSSARY

Accounting Structure Chart	Departmental structure starting with the Minister, Deputy Minister(s), Branch and Division levels consistent with the classification of accounts.
Appropriation	Authority contained in an Act to incur expenditure.
Branch	Departments are further sub-divided into Branches.
Branch Summary	Describes the major responsibilities and summarizes capital expenditures for the Branch.
Budget	An estimate of proposed expenditures for a given period and the proposed means (revenue estimates) of financing those expenditures.
Capital Asset	Physical property used in the operations of the government, and not intended for sale. Capital assets will have a useful life of one year or longer.
Capital Expenditures	Government expenditures for the purchase or construction of a capital asset; an outlay that increases the expected useful life of an existing capital asset; planning and study costs related to capital asset acquisition or construction; or grants and contributions to other agencies for the purpose of capital acquisition or construction.
Capital Lease	A lease agreement for real property where the benefits and risks have been substantially transferred to the government, even though ownership remains with the lessor.
Capital Projects	Projects established for the purchase or construction of Capital Assets. A capital project includes a purchase of land or equipment and/or the construction of a building or other facility; planning and study costs related to capital asset acquisition or construction; or grants and contributions to other agencies for the purpose of capital acquisition or construction.
Contribution	A conditional transfer of appropriated funds to a public agency, community government or other organization that is accountable to the government for the use of the funds and fulfillment of the objectives for which the funding is provided.

GLOSSARY

Department	Organizational entity, established by Cabinet to deliver programs and services within a specified mandate.
Department Summary	Describes the Mission or purpose, and summarizes the Detail of Expenditures for each Department.
Detail of Capital	A listing of the capital projects by Standard Object and geographic area within a Branch.
Estimates	The estimate of expenditures and revenues approved by the Legislative Assembly for all government departments.
Fiscal Year	A consecutive twelve-month period designated as the reporting year of a government or organization. The Government of Nunavut's fiscal year starts April 1 and ends March 31 of the following calendar year.
Grant	An unconditional transfer of appropriated funds to a public agency, group or organization for which the recipient is, with the exception of meeting the eligibility criteria for the grant, not accountable to the government.
Objects of Expenditure	<p>Votes and Items of expenditure are broken down into greater detail termed Control, Standard, and Detailed Objects of expenditure. In the Capital Estimates, expenditures are presented within three Standard Objects of Expenditure:</p> <ul style="list-style-type: none"> - Grants and Contributions - Tangible Assets - Computer Hardware and Software
Regions	Geographical sub-divisions of Nunavut for administrative purposes.
Vote	A category of expenditure according to its intended use (e.g. Vote 1- Operations and Maintenance, Vote 2 – Capital).



ᐃᐃᐃᓐ ᓂᓕᓕᓐᓂᓐ
ABBREVIATIONS

<u>ᐃᐃᐃᓐ ᓂᓕᓕᓐᓂᓐ</u> <u>Abbreviation</u>	<u>ᐃᓂᓂᐃᓂᓐᓂᓐ</u> <u>Department</u>	<u>ᐃᓂᓂᓐ</u> <u>Meaning</u>
BCC	Justice ᐃᓂᓂᓂᓐᓂᓐ	Baffin Correctional Centre (Iqaluit) ᐃᓂᓂᓂᓂᓐᓂᓐ (ᐃᓂᓂᓂᓂᓐ)
YO	Justice ᐃᓂᓂᓂᓐᓂᓐ	Young Offenders Facility (Iqaluit) ᐃᓂᓂᓂᓂᓐᓂᓐ ᐃᓂᓂᓂᓂᓐᓂᓐ (ᐃᓂᓂᓂᓂᓐ)
HS	Education ᐃᓂᓂᓂᓂᓐᓂᓐ	High School ᐃᓂᓂᓂᓂᓐᓂᓐ
NAC	Education ᐃᓂᓂᓂᓂᓐᓂᓐ	Nunavut Arctic College ᐃᓂᓂᓂᓂᓐᓂᓐ ᓂᓂᓂᓂᓐᓂᓐ
M&I	NHC ᐃᓂᓂᓂᓂᓐᓂᓐ	Modernization and Improvements ᐃᓂᓂᓂᓂᓐᓂᓐ ᐃᓂᓂᓂᓂᓐᓂᓐ
CMHC	NHC ᐃᓂᓂᓂᓂᓐᓂᓐ	Canada Mortgage and Housing Corporation ᓂᓂᓂᓂᓐᓂᓐ ᐃᓂᓂᓂᓂᓐᓂᓐ ᐃᓂᓂᓂᓂᓐᓂᓐ ᐃᓂᓂᓂᓂᓐᓂᓐ
AME	ED&T ᐃᓂᓂᓂᓂᓐᓂᓐ ᐃᓂᓂᓂᓂᓐᓂᓐ	Airport Maintenance Equipment ᓂᓂᓂᓂᓐᓂᓐ ᐃᓂᓂᓂᓂᓐᓂᓐ ᐃᓂᓂᓂᓂᓐᓂᓐ
FF&E	All Departments ᐃᓂᓂᓂᓂᓐᓂᓐ	Furniture, Fixtures and Equipment ᐃᓂᓂᓂᓂᓐᓂᓐ ᐃᓂᓂᓂᓂᓐᓂᓐ

Note: The above abbreviations are not used in Inuktitut.

ᓂᓂᓂᓂᓐᓂᓐ: ᐃᓂᓂᓂᓂᓐᓂᓐ ᐃᓂᓂᓂᓂᓐᓂᓐ ᐃᓂᓂᓂᓂᓐᓂᓐ ᐃᓂᓂᓂᓂᓐᓂᓐ.



ᐃᓕᓕᓐᓂᓐ
INDEX

ᐱᓕᓕᓐᓂᓐ ᐃᓐᓂᓐᓂᓐ
PROJECTS BY DEPARTMENT

ᐃᓐᓂᓐᓂᓐ Introduction	III-1
ᐱᓕᓕᓐᓂᓐ Office of the Legislative Assembly	III-3
ᐱᓕᓕᓐᓂᓐ Justice	III-4
ᐃᓐᓂᓐᓂᓐ Culture, Language, Elders and Youth	III-6
ᐃᓐᓂᓐᓂᓐ Education	III-7
ᐱᓕᓕᓐᓂᓐ ᐃᓐᓂᓐᓂᓐᓂᓐᓂᓐ ᐃᓐᓂᓐᓂᓐ Health and Social Services	III-9
ᐃᓐᓂᓐᓂᓐ Environment	III-12
ᐃᓐᓂᓐᓂᓐ ᐃᓐᓂᓐᓂᓐ ᐃᓐᓂᓐᓂᓐ Community and Government Services	III-16
ᐃᓐᓂᓐᓂᓐ ᐃᓐᓂᓐᓂᓐ Economic Development and Transportation	III-26
ᐃᓐᓂᓐᓂᓐ ᐃᓐᓂᓐᓂᓐ Nunavut Housing Corporation	III-30

FIVE YEAR CAPITAL PLAN

INTRODUCTION

While subject to revision each year, the 5-Year Capital Plan provides a framework for review of the Government's future capital expenditure priorities, including planned expenditures for the forthcoming budget year, 2006-2007.

The Standing Committees reviewed the Capital Plan in September/October 2005, prior to tabling of the 2006-2007 Capital Estimates in the Legislative Assembly in November 2005.

The 5-Year Capital Plan outlines \$103.5 million in expenditures for 2006-2007, and a total of approximately \$372 million over the five-year Capital Plan period. Projects are arranged by department, region and community.

With the inclusion of expenditures on the Qikiqtani General Hospital in Iqaluit, the Department of Health and Social Services will receive about 22.0% of total appropriations in 2006-2007. While this facility might ultimately be leased, it is considered prudent to identify the expenditures in the 5-year Capital Plan and in the 2006-2007 Capital Estimates. Other major capital expenditures will be in the Departments of Community and Government Services (21.0%), Education (19.1%), and the Nunavut Housing Corporation with about 19.9 percent of the total in 2006-2007.

The Plan details expenditures planned primarily from Vote 2 - Capital.





ᑕᑦᑕᐱᑦᐱᑦ ᐱᑦᐱᑦᐱᑦ ᐱᑦᐱᑦᐱᑦ ᐱᑦᐱᑦᐱᑦ	ᐱᑦᐱᑦᐱᑦᐱᑦᐱᑦ	ᐱᑦᐱᑦᐱᑦᐱᑦ	ᐱᑦᐱᑦᐱᑦᐱᑦ	ᐱᑦᐱᑦᐱᑦᐱᑦ	ᐱᑦᐱᑦᐱᑦᐱᑦ	ᐱᑦᐱᑦᐱᑦᐱᑦ
	ᐱᑦᐱᑦᐱᑦᐱᑦᐱᑦ	ᐱᑦᐱᑦᐱᑦᐱᑦᐱᑦ	ᐱᑦᐱᑦᐱᑦᐱᑦᐱᑦ	ᐱᑦᐱᑦᐱᑦᐱᑦᐱᑦ	ᐱᑦᐱᑦᐱᑦᐱᑦᐱᑦ	ᐱᑦᐱᑦᐱᑦᐱᑦᐱᑦ
ᑕᑦᑕᐱᑦᐱᑦ ᐱᑦᐱᑦᐱᑦ ᐱᑦᐱᑦᐱᑦ ᐱᑦᐱᑦᐱᑦ	2005/2006	2006/07	2007/08	2008/09	2009/10	2010/11
5-Year Capital Plan	Revised Budget	Budget	Planned	Planned	Planned	Planned
ᐱᑦᐱᑦᐱᑦᐱᑦᐱᑦ						
Office of the Legislative Assembly						
ᐱᑦᐱᑦᐱᑦᐱᑦᐱᑦᐱᑦ Headquarters Region						
ᐱᑦᐱᑦᐱᑦᐱᑦ Iqaluit						
ᐱᑦᐱᑦᐱᑦᐱᑦᐱᑦᐱᑦ ᐱᑦᐱᑦᐱᑦᐱᑦᐱᑦᐱᑦ	50	50	50	50	50	50
Furniture Replacement						
ᑕᑦᐱᑦᐱᑦᐱᑦᐱᑦᐱᑦ ᐱᑦᐱᑦᐱᑦᐱᑦᐱᑦᐱᑦ	30	125	10	10	10	10
Audio Visual Systems Upgrade						
ᐱᑦᐱᑦᐱᑦᐱᑦᐱᑦᐱᑦ ᐱᑦᐱᑦᐱᑦᐱᑦᐱᑦᐱᑦᐱᑦ	20	20	20	20	20	20
Legislative Assembly Computer System						
ᐱᑦᐱᑦᐱᑦᐱᑦᐱᑦᐱᑦ ᐱᑦᐱᑦᐱᑦᐱᑦᐱᑦᐱᑦ	20	20	20	20	20	20
Artwork for Legislative						
ᐱᑦᐱᑦᐱᑦᐱᑦᐱᑦᐱᑦᐱᑦ ᐱᑦᐱᑦᐱᑦᐱᑦᐱᑦ	-	100	100	-	-	-
Upgrade to Chamber and Offices						
ᐱᑦᐱᑦᐱᑦᐱᑦᐱᑦᐱᑦᐱᑦ ᐱᑦᐱᑦᐱᑦᐱᑦᐱᑦᐱᑦ	-	-	-	40	-	-
Assembly Vehicle Replacement						
ᐱᑦᐱᑦᐱᑦᐱᑦᐱᑦᐱᑦᐱᑦ ᐱᑦᐱᑦᐱᑦᐱᑦᐱᑦᐱᑦ	-	-	-	40	-	-
Elections Nunavut Equipment Upgrade						
ᐱᑦᐱᑦᐱᑦᐱᑦᐱᑦᐱᑦᐱᑦ ᐱᑦᐱᑦᐱᑦᐱᑦᐱᑦᐱᑦᐱᑦ	-	-	-	-	125	-
Hansard Recording System - Upgrade						
ᐱᑦᐱᑦᐱᑦᐱᑦᐱᑦᐱᑦᐱᑦ Total Headquarters	-	315	200	180	225	100
ᐱᑦᐱᑦᐱᑦᐱᑦᐱᑦᐱᑦᐱᑦ ᐱᑦᐱᑦᐱᑦᐱᑦᐱᑦ	-	315	200	180	225	100
Total Office of the Legislative Assembly	-	315	200	180	225	100

		ᐊᑦᑎᑦᑎᐱᐅᑦᑦᑎᑦ					
		ᐊᑦᑎᑦᑎᐱᐅᑦ	ᐊᑦᑎᑦᑎᐱᐅᑦ	ᐊᑦᑎᑦᑎᐱᐅᑦ	ᐊᑦᑎᑦᑎᐱᐅᑦ	ᐊᑦᑎᑦᑎᐱᐅᑦ	
ᑕᑦᑦᑎᐱᐅᑦ ᐊᑦᑦᑦᑎᐱᐅᑦ ᐊᑦᑎᑦᑎᐱᐅᑦ ᐊᑦᑎᑦᑎᐱᐅᑦ		2005/2006	2006/07	2007/08	2008/09	2009/10	2010/11
5-Year Capital Plan		Revised	Budget	Planned	Planned	Planned	Planned
		Budget					
ᑦᑎᑦᑎᐱᐅᑦ	Kugaaruk						
	ᑦᑎᑦᑎᐱᐅᑦ ᑦᑎᑦᑎᐱᐅᑦ ᐱᑦᑦᑦᑎᐱᐅᑦ	166	40	-	-	-	100
	Kugaaruk Park Development						
ᑦᑎᑦᑎᐱᐅᑦ	Kugluktuk						
	ᑦᑎᑦᑎᐱᐅᑦ ᑦᑎᑦᑎᐱᐅᑦ	71	70	-	-	113	90
	Kuklok Park - Bloody Falls						
ᑦᑎᑦᑎᐱᐅᑦ - ᑦᑎᑦᑎᐱᐅᑦ	Kitikmeot - various						
	ᐃᑦᑎᑦᑎᐱᐅᑦ	75	100	94	116	106	110
	Mobile Equipment						
	ᑦᑎᑦᑎᐱᐅᑦ ᐊᑦᑦᑦᑎᐱᐅᑦ ᑦᑎᑦᑎᐱᐅᑦ	-	15	20	20	20	25
	Parks Centres/Equipment Replacement						
ᑦᑎᑦᑎᐱᐅᑦ ᑦᑎᑦᑎᐱᐅᑦ	Total Kitikmeot Region	-	950	114	186	339	400
ᐊᑦᑎᑦᑎᐱᐅᑦ ᑦᑎᑦᑎᐱᐅᑦ	Total	-	2,230	1,458	1,361	1,263	1,166
Environment							

ᓕᓕᓕᓂᓄᓂ ᐃᓕᓕᓂᓄᓂ ᐃᓕᓕᓂᓄᓂ ᐃᓕᓕᓂᓄᓂ 5-Year Capital Plan		ᐃᓕᓕᓂᓄᓂᓂᓄᓂᓂᓄᓂ				
		ᐃᓕᓕᓂᓄᓂ	ᐃᓕᓕᓂᓄᓂ	ᐃᓕᓕᓂᓄᓂ	ᐃᓕᓕᓂᓄᓂ	ᐃᓕᓕᓂᓄᓂ
		2005/2006 Revised Budget	2006/07 Budget	2007/08 Planned	2008/09 Planned	2009/10 Planned
ᓕᓕᓂᓄᓂ	Pond Inlet					
ᓄᓇᓕᓂ ᓕᓕᓂᓄᓂᓂᓄᓂ / ᓕᓕᓂᓄᓂᓂᓄᓂ		864	1,020	960	-	-
Community Hall / Arena						
ᓕᓕᓂᓄᓂᓂᓄᓂ		-	-	-	280	-
Fire Truck						
ᐃᓕᓕᓂᓄᓂ ᓕᓕᓂᓄᓂᓂᓄᓂ		-	150	275	145	-
Water Line Replacement						
ᓕᓕᓂᓄᓂᓂᓄᓂ	Qikiqtarjuaq					
ᓄᓇᓕᓂᓄᓂ ᓕᓕᓂᓄᓂᓂᓄᓂ		1,188	1,102	792	-	-
Municipal Services						
ᓕᓕᓂᓄᓂ		-	-	280	-	-
Dozer						
ᓕᓕᓂᓄᓂᓂᓄᓂ		-	-	-	130	1,037
Fire Hall						
ᓕᓕᓂᓄᓂᓂᓄᓂ		-	-	260	-	-
Loader						
ᓕᓕᓂᓄᓂᓂᓄᓂ ᓄᓇᓕᓂᓄᓂᓂᓄᓂ		-	-	-	-	100
Maintenance Garage						
ᓕᓕᓂᓄᓂᓂᓄᓂ	Resolute Bay					
ᓄᓇᓕᓂᓄᓂᓂᓄᓂ ᓕᓕᓂᓄᓂᓂᓄᓂ ᐃᓕᓕᓂᓄᓂ		-	1,720	2,260	2,000	-
Tank Farm Capacities and Code Compliance						
ᓕᓕᓂᓄᓂᓂᓄᓂ ᐃᓕᓕᓂᓄᓂᓂᓄᓂ		-	756	666	102	-
Sewage and Water Works						
ᐃᓕᓕᓂᓄᓂᓂᓄᓂ		-	-	450	1,027	776
Arena						
ᓕᓕᓂᓄᓂ		-	-	280	-	-
Dozer						
ᓂᓄᓂᓄᓂᓂᓄᓂ ᐃᓕᓕᓂᓄᓂ		150	-	70	750	-
Solid Waste Site Abandonment						

ᓕᓕᓴᓄᓕ ᐊᓕᓂᓄᓕ ᐊᓕᓂᓄᓂᓄᓂ ᐊᓕᓂᓄᓂᓂ	ᐊᓕᓂᓄᓂᓂᓂᓂᓂᓂᓂᓂ					
	ᐊᓂᓂᓂᓂᓂ	ᐊᓂᓂᓂᓂᓂ	ᐊᓂᓂᓂᓂᓂ	ᐊᓂᓂᓂᓂᓂ	ᐊᓂᓂᓂᓂᓂ	ᐊᓂᓂᓂᓂᓂ
5-Year Capital Plan	2005/2006 Revised Budget	2006/07 Budget	2007/08 Planned	2008/09 Planned	2009/10 Planned	2010/11 Planned
ᓂᓴᓴᓂᓂᓂᓂ Baker Lake						
ᐃᓕᓕᓂᓂᓂ ᓱᓱᓂᓂᓂᓂᓂᓂᓂ	46	192	200	-	-	-
Water System Pump House Upgrade						
ᓂᓴᓂᓂᓂᓂᓂᓂ ᓄᓂᓂᓂᓂᓂᓂᓂ	-	-	-	150	450	-
Renovate Parking Garage						
ᐊᓂᓂᓂᓂᓂ ᐊᓂᓂᓂᓂᓂᓂᓂ	-	-	-	-	450	-
Snow Fencing						
ᐃᓕᓂᓂ ᓱᓱᓂᓂᓂ ᐊᓂᓂ ᓂᓴᓂᓂ	-	100	-	-	-	-
ᓂᓴᓂᓂᓂᓂᓂᓂ ᓂᓴᓂᓂᓂᓂᓂᓂ						
Water Quality & Sewage Treatment Study						
ᐃᓂᓂᓂᓂᓂ Chesterfield Inlet						
ᓂᓂᓂᓂᓂ ᓄᓂᓂᓂᓂ	-	280	-	-	-	-
Fire Truck						
ᓂᓴᓂᓂᓂᓂᓂᓂ ᓄᓂᓂᓂᓂᓂᓂᓂ	-	-	150	-	-	-
Renovate Parking Garage						
ᓂᓴᓂᓂᓂᓂᓂ	16	-	475	800	50	-
Sewage						
ᐊᓂᓂᓂᓂᓂ ᓂᓴᓂᓂᓂ	-	-	-	-	-	240
Wheel Loader						
ᐊᓂᓂᓂᓂᓂ ᐊᓂᓂᓂᓂᓂᓂᓂ	-	-	-	-	150	-
Snow Fencing						
ᓂᓴᓂᓂ Coral Harbour						
ᓂᓴᓂᓂᓂᓂᓂ ᐊᓂᓂ ᐃᓕᓂᓂᓂᓂᓂ	-	-	-	-	150	-
Sewage and Water Works						
ᐃᓂᓂᓂᓂᓂᓂᓂ ᓂᓴᓂᓂᓂᓂᓂᓂᓂᓂ ᐊᓂᓂ	-	-	361	1,451	1,350	-
ᓴᓂᓂᓂᓂᓂᓂᓂᓂᓂ						
Tank Farm Capacities and Code Compliance						
ᓂᓴᓂᓂᓂᓂᓂᓂ ᓄᓂᓂᓂᓂᓂᓂᓂ	-	-	-	30	-	-
Renovate Maintenance Garage						

		ᓂᓂᓂᓂᓂᓂᓂᓂ					
		ᓂᓂᓂᓂᓂᓂ	ᓂᓂᓂᓂᓂᓂ	ᓂᓂᓂᓂᓂᓂ	ᓂᓂᓂᓂᓂᓂ	ᓂᓂᓂᓂᓂᓂ	
ᓂᓂᓂᓂᓂ ᓂᓂᓂᓂᓂᓂ ᓂᓂᓂᓂᓂᓂ		2005/2006	2006/07	2007/08	2008/09	2009/10	2010/11
5-Year Capital Plan		Revised Budget	Budget	Planned	Planned	Planned	Planned
ᓂᓂᓂᓂᓂ Coral Harbour							
ᓄᓇᓂᓂ	Vehicle	-	40	-	-	-	-
ᓂᓂᓂᓂᓂᓂ	Fire Hall	-	-	-	140	428	427
ᓂᓂᓂᓂᓂᓂᓂ ᓄᓇᓂᓂᓂᓂᓂᓂ	Renovate Parking Garage	-	-	-	-	-	335
ᓂᓂᓂᓂᓂᓂ Rankin Inlet							
ᓂᓂᓂᓂᓂᓂᓂᓂ ᓂᓂᓂᓂᓂᓂᓂᓂᓂᓂ ᓂᓂᓂᓂ							
ᓂᓂᓂᓂᓂᓂᓂᓂᓂ	Tank Farm Capacities and Code Compliance	-	250	1,800	550	-	-
ᓂᓂᓂᓂᓂᓂᓂ ᓂᓂᓂᓂᓂᓂᓂᓂ	Sewage Treatment Plant	1,500	750	-	-	-	-
ᓂᓂᓂᓂᓂᓂᓂᓂ ᓂᓂᓂᓂᓂᓂᓂᓂᓂ	Abandon Old Solid Waste Site	152	-	-	300	500	-
ᓂᓂᓂᓂᓂᓂᓂᓂᓂᓂ	Dump Truck	-	-	-	-	125	-
ᓂᓂᓂᓂᓂᓂᓂᓂᓂᓂ	Loader	-	280	-	-	-	-
ᓂᓂᓂᓂᓂᓂᓂᓂᓂᓂ ᓂᓂᓂᓂᓂᓂᓂᓂᓂᓂᓂᓂ	Nipissar Lake Pump house Improvements	-	-	20	-	-	-
ᓂᓂᓂᓂᓂᓂᓂᓂᓂᓂ ᓂᓂᓂᓂᓂᓂᓂᓂᓂᓂᓂ	Water Pump house Improvements	-	-	90	-	-	-
ᓂᓂᓂᓂᓂᓂᓂᓂᓂᓂᓂᓂᓂᓂᓂᓂ	Snow Fencing	-	-	150	300	-	-
ᓄᓇᓂᓂ	Vehicle	-	40	40	40	40	-
ᓂᓂᓂᓂᓂ Repulse Bay							
ᓂᓂᓂᓂᓂᓂᓂᓂᓂ ᓂᓂᓂᓂᓂᓂᓂᓂᓂᓂᓂᓂ ᓂᓂᓂᓂ							
ᓂᓂᓂᓂᓂᓂᓂᓂᓂᓂᓂᓂ	Tank Farm Capacities and Code Compliance	-	450	-	-	-	-

ᓕᓕᓂᓄ ᓂᓚᓂᓄᓐ ᓂᓚᓂᓄᓐ ᓂᓚᓂᓄᓐ 5-Year Capital Plan	ᓂᓚᓂᓄᓐ ᓂᓚᓂᓄᓐ ᓂᓚᓂᓄᓐ ᓂᓚᓂᓄᓐ ᓂᓚᓂᓄᓐ ᓂᓚᓂᓄᓐ					
	ᓂᓚᓂᓄᓐ	ᓂᓚᓂᓄᓐ	ᓂᓚᓂᓄᓐ	ᓂᓚᓂᓄᓐ	ᓂᓚᓂᓄᓐ	ᓂᓚᓂᓄᓐ
	2005/2006 Revised Budget	2006/07 Budget	2007/08 Planned	2008/09 Planned	2009/10 Planned	2010/11 Planned
ᓂᓚᓂᓄᓐ Repulse Bay						
ᓄᓚᓕᓂᓄ ᓂᓚᓂᓄᓐ ᓂᓚᓂᓄᓐ Community Hall	-	-	857	106	537	-
ᓄᓚᓂᓄᓐ ᓂᓚᓂᓄᓐ ᓂᓚᓂᓄᓐ Parking Garage	-	-	-	30	-	-
ᓂᓚᓂᓄᓐ ᓂᓚᓂᓄᓐ ᓂᓚᓂᓄᓐ ᓂᓚᓂᓄᓐ ᓂᓚᓂᓄᓐ Upgrade Water Access Road	-	-	100	-	-	-
ᓂᓚᓂᓄᓐ ᓂᓚᓂᓄᓐ ᓂᓚᓂᓄᓐ ᓂᓚᓂᓄᓐ Water Reservoir Repairs	-	-	-	-	50	-
ᓂᓚᓂᓄᓐ Whale Cove						
ᓂᓚᓂᓄᓐ ᓂᓚᓂᓄᓐ ᓂᓚᓂᓄᓐ ᓂᓚᓂᓄᓐ ᓂᓚᓂᓄᓐ Tank Farm Capacities and Code Compliance	368	2,000	550	-	-	-
ᓂᓚᓂᓄᓐ ᓂᓚᓂᓄᓐ ᓂᓚᓂᓄᓐ Fire Truck	-	280	-	-	-	-
ᓂᓚᓂᓄᓐ ᓂᓚᓂᓄᓐ ᓂᓚᓂᓄᓐ ᓂᓚᓂᓄᓐ Renovate Parking Garage	-	-	-	-	-	335
ᓂᓚᓂᓄᓐ - ᓂᓚᓂᓄᓐ Kivalliq - various						
ᓂᓚᓂᓄᓐ ᓂᓚᓂᓄᓐ ᓂᓚᓂᓄᓐ ᓂᓚᓂᓄᓐ ᓂᓚᓂᓄᓐ Block Funding	262	262	262	262	262	262
ᓂᓚᓂᓄᓐ ᓂᓚᓂᓄᓐ ᓂᓚᓂᓄᓐ ᓂᓚᓂᓄᓐ Granular Programs	-	56	56	56	56	56
ᓂᓚᓂᓄᓐ ᓂᓚᓂᓄᓐ ᓂᓚᓂᓄᓐ ᓂᓚᓂᓄᓐ ᓂᓚᓂᓄᓐ Minor Capital Projects	70	70	70	70	70	70
ᓄᓚᓕᓂᓄ ᓂᓚᓂᓄᓐ ᓂᓚᓂᓄᓐ Community Planning	75	70	70	70	70	70
ᓂᓚᓂᓄᓐ ᓂᓚᓂᓄᓐ ᓂᓚᓂᓄᓐ ᓂᓚᓂᓄᓐ Mobile Equipment Repair	40	40	40	40	40	40
ᓂᓚᓂᓄᓐ ᓂᓚᓂᓄᓐ Total Kivalliq Region		5,160	5,561	4,741	5,518	2,585

ᓕᓕᓕᓂᓄ ᓆᓇᓆᓄᓂ ᓆᓇᓆᓄᓂ ᓆᓇᓆᓄᓂ 5-Year Capital Plan	ᓆᓇᓆᓄᓂ ᓆᓇᓆᓄᓂ ᓆᓇᓆᓄᓂ ᓆᓇᓆᓄᓂ	ᓆᓇᓆᓄᓂ ᓆᓇᓆᓄᓂ ᓆᓇᓆᓄᓂ ᓆᓇᓆᓄᓂ	ᓆᓇᓆᓄᓂ ᓆᓇᓆᓄᓂ ᓆᓇᓆᓄᓂ ᓆᓇᓆᓄᓂ	ᓆᓇᓆᓄᓂ ᓆᓇᓆᓄᓂ ᓆᓇᓆᓄᓂ ᓆᓇᓆᓄᓂ	ᓆᓇᓆᓄᓂ ᓆᓇᓆᓄᓂ ᓆᓇᓆᓄᓂ ᓆᓇᓆᓄᓂ	ᓆᓇᓆᓄᓂ ᓆᓇᓆᓄᓂ ᓆᓇᓆᓄᓂ ᓆᓇᓆᓄᓂ
	2005/2006 Revised Budget	2006/07 Budget	2007/08 Planned	2008/09 Planned	2009/10 Planned	2010/11 Planned
ᓕᓕᓕᓂᓄ ᓆᓇᓆᓄᓂ Taloyoak						
ᓆᓆᓆᓄᓂ ᓆᓆᓆᓄᓂ ᓆᓆᓆᓄᓂ ᓆᓆᓆᓄᓂ Water System Improvement	139	200	250	812	1,000	-
ᓆᓆᓆᓄᓂ ᓆᓆᓆᓄᓂ - ᓆᓆᓆᓄᓂ - various Kitikmeot						
ᓆᓆᓆᓄᓂ ᓆᓆᓆᓄᓂ ᓆᓆᓆᓄᓂ ᓆᓆᓆᓄᓂ Block Funding	288	288	288	288	288	288
ᓆᓆᓆᓄᓂ ᓆᓆᓆᓄᓂ ᓆᓆᓆᓄᓂ ᓆᓆᓆᓄᓂ Granular Programs	56	56	56	56	56	56
ᓆᓆᓆᓄᓂ ᓆᓆᓆᓄᓂ ᓆᓆᓆᓄᓂ ᓆᓆᓆᓄᓂ Minor Capital Projects	155	70	70	70	70	70
ᓆᓆᓆᓄᓂ ᓆᓆᓆᓄᓂ ᓆᓆᓆᓄᓂ ᓆᓆᓆᓄᓂ Community Planning	70	70	70	70	70	70
ᓆᓆᓆᓄᓂ ᓆᓆᓆᓄᓂ ᓆᓆᓆᓄᓂ ᓆᓆᓆᓄᓂ Mobile Equipment Repair	40	40	40	40	40	40
ᓆᓆᓆᓄᓂ ᓆᓆᓆᓄᓂ Total Kitikmeot Region	-	4,214	2,839	2,561	1,624	1,524
ᓄᓇᓕᓂ ᓆᓆᓆᓄᓂ ᓆᓆᓆᓄᓂ ᓆᓆᓆᓄᓂ ᓆᓆᓆᓄᓂ Total Community and Government Services	-	21,697	20,815	15,834	14,703	13,572

ᓕᓕᓕᓕᓕ ᐸᓕᓕᓕᓕ ᐸᓕᓕᓕᓕᓕ ᐸᓕᓕᓕᓕᓕ	ᐸᓕᓕᓕᓕᓕᓕᓕᓕᓕ					
	ᐸᓕᓕᓕᓕᓕᓕ	ᐸᓕᓕᓕᓕᓕᓕ	ᐸᓕᓕᓕᓕᓕᓕ	ᐸᓕᓕᓕᓕᓕᓕ	ᐸᓕᓕᓕᓕᓕᓕ	ᐸᓕᓕᓕᓕᓕᓕ
5-Year Capital Plan	2005/2006	2006/07	2007/08	2008/09	2009/10	2010/11
	Revised	Budget	Planned	Planned	Planned	Planned
	Budget					
ᐃᓕᓕᓕᓕᓕ Iqaluit						
ᓕᓕᓕᓕᓕᓕᓕ ᐸᓕᓕᓕᓕᓕᓕᓕᓕ	-	240	-	235	-	-
Plow Trucks						
ᐸᓕᓕᓕᓕᓕᓕ	-	-	-	-	250	-
Snow Blower						
ᓕᓕᓕᓕᓕᓕᓕ ᐸᓕᓕᓕᓕᓕᓕᓕ ᐸᓕᓕᓕᓕᓕᓕᓕ 1	-	1,000	420	-	-	-
Airport Taxi & Apron 1						
ᓕᓕᓕᓕᓕ Kimmirut						
ᓕᓕᓕᓕᓕᓕᓕᓕ ᓕᓕᓕᓕᓕᓕᓕᓕᓕᓕᓕᓕ	-	125	650	300	-	-
Rehabilitation Runway/Apron						
ᐸᓕᓕᓕᓕᓕᓕᓕᓕ	20	20	-	-	-	-
AME Packer						
ᓕᓕᓕᓕᓕ Nanisivik						
ᐸᓕᓕᓕᓕᓕᓕᓕᓕ ᓕᓕᓕᓕᓕᓕᓕᓕᓕᓕ	279	100	100	70	83	-
Highway Upgrades (Access Road)						
ᐸᓕᓕᓕᓕ Pangnirtung						
ᐱᓚᓕᐸᓕᓕᓕᓕᓕᓕ ᐃᓕᓕᓕᓕᓕᓕᓕ	-	40	-	-	-	-
Department Vehicle						
ᓕᓕᓕᓕᓕᓕᓕᓕᓕ	-	-	-	-	40	-
Pick-up Truck						
ᓕᓕᓕᓕᓕ Pond Inlet						
ᓕᓕᓕᓕᓕᓕᓕ ᐸᓕᓕᓕᓕᓕᓕᓕᓕ	-	-	-	-	240	-
Plow Truck						
ᓕᓕᓕᓕᓕ Resolute Bay						
ᐸᓕᓕᓕᓕᓕᓕᓕ ᓕᓕᓕᓕᓕ	-	316	-	-	-	-
Wheel Loader						
ᐸᓕᓕᓕᓕᓕᓕᓕ	-	-	-	-	250	-
AME Snow Blower						
ᓕᓕᓕᓕᓕᓕᓕ Total Qikiqtaaluk Region		6,241	10,144	4,855	1,113	-

ᑕᑦᑦᑦᑦᑦᑦ ᑦᑦᑦᑦᑦᑦ ᑦᑦᑦᑦᑦᑦᑦᑦ ᑦᑦᑦᑦᑦᑦᑦ	ᑦᑦᑦᑦᑦᑦᑦᑦᑦᑦᑦᑦ						
	ᑦᑦᑦᑦᑦᑦᑦ	ᑦᑦᑦᑦᑦᑦᑦ	ᑦᑦᑦᑦᑦᑦᑦ	ᑦᑦᑦᑦᑦᑦᑦ	ᑦᑦᑦᑦᑦᑦᑦ	ᑦᑦᑦᑦᑦᑦᑦ	
	2005/2006	2006/07	2007/08	2008/09	2009/10	2010/11	
5-Year Capital Plan	Revised Budget	Budget	Planned	Planned	Planned	Planned	
ᑦᑦᑦᑦᑦᑦᑦ Kivalliq Region							
ᑦᑦᑦᑦᑦᑦᑦ Baker Lake							
ᑦᑦᑦᑦᑦᑦᑦ ᑦᑦᑦᑦᑦᑦᑦᑦᑦᑦ	-	-	-	-	400	400	
Airfield Lighting							
ᑦᑦᑦᑦᑦᑦᑦ ᑦᑦᑦᑦᑦ	-	-	-	-	-	320	
Wheel Loader							
ᑦᑦᑦᑦᑦᑦ ᑦᑦᑦᑦᑦᑦ	-	-	40	-	-	-	
Pick-up Truck							
ᑦᑦᑦᑦᑦᑦᑦ Chesterfield Inlet							
ᑦᑦᑦᑦᑦᑦᑦ ᑦᑦᑦᑦᑦᑦᑦᑦᑦ ᑦᑦᑦᑦᑦᑦᑦᑦᑦᑦ	-	-	125	200	-	-	
Replace Airfield Lighting							
ᑦᑦᑦᑦᑦᑦ ᑦᑦᑦᑦᑦᑦ	-	-	40	-	-	-	
Pick-up Truck							
ᑦᑦᑦᑦᑦᑦᑦ Rankin Inlet							
ᑦᑦᑦᑦᑦᑦᑦ ᑦᑦᑦᑦᑦᑦᑦᑦᑦ	-	235	-	-	-	-	
AME Plow Truck							
ᑦᑦᑦᑦᑦᑦᑦ ᑦᑦᑦᑦᑦ	-	-	-	-	-	320	
Wheel Loader							
ᑦᑦᑦᑦᑦᑦᑦᑦᑦᑦ ᑦᑦᑦᑦᑦᑦᑦᑦᑦᑦᑦᑦ	-	-	-	-	-	480	
Rehabilitation Runway/Apron							
ᑦᑦᑦᑦᑦᑦᑦ Repulse Bay							
ᑦᑦᑦᑦᑦᑦᑦᑦᑦᑦᑦ	-	20	-	-	-	-	
AME Packer							
ᑦᑦᑦᑦᑦᑦᑦ Whale Cove							
ᑦᑦᑦᑦᑦᑦᑦ ᑦᑦᑦᑦᑦ	-	320	-	-	-	-	
Wheel Loader							
ᑦᑦᑦᑦᑦᑦᑦ ᑦᑦᑦᑦᑦᑦᑦ	Total Kivalliq Region		575	205	200	400	1,520

		ᐸᓐᓈᓂᓂᓐᓈᓐ ᐸᓐᓈᓂᓂᓐᓈᓐ					
		ᐸᓐᓈᓂᓂᓐᓈᓐ	ᐸᓐᓈᓂᓂᓐᓈᓐ	ᐸᓐᓈᓂᓂᓐᓈᓐ	ᐸᓐᓈᓂᓂᓐᓈᓐ	ᐸᓐᓈᓂᓂᓐᓈᓐ	
ᐸᓐᓈᓂᓂᓐᓈᓐ ᐸᓐᓈᓂᓂᓐᓈᓐ		2005/2006	2006/07	2007/08	2008/09	2009/10	2010/11
5-Year Capital Plan		Revised Budget	Budget	Planned	Planned	Planned	Planned
ᓈᓐᓈᓂᓂᓐᓈᓐ	Cape Dorset						
M & I / ᓄᓂᓂᓂᓐᓈᓐᓈᓐᓈᓐᓈᓐ - ᓄᓇᓂᓖᓐ ᓈᓄᓈᓐᓈᓐ							
ᓈᓄᓈᓐᓈᓐᓈᓐᓈᓐᓈᓐ		327	384	433	396	406	385
M & I / Retrofit - GN Funds							
M & I / ᓄᓂᓂᓂᓐᓈᓐᓈᓐᓈᓐᓈᓐ - CMHC - ᓄᓐᓂᓐ							
ᓈᓄᓈᓐᓈᓐᓈᓐᓈᓐᓈᓐ (ᓈᓐᓈᓐ ᐸᓈᓐᓈᓐᓈᓐ)		223	227	224	245	242	261
M & I / Retrofit - CMHC Funded (not in total)							
ᐃᓐᓈᓐᓈᓐᓈᓐ		23	30	30	30	30	30
Mobile Equipment							
ᓈᓐᓈᓂᓂᓐᓈᓐ	Clyde River						
M & I / ᓄᓂᓂᓂᓐᓈᓐᓈᓐᓈᓐᓈᓐ - ᓄᓇᓂᓖᓐ ᓈᓄᓈᓐᓈᓐ							
ᓈᓄᓈᓐᓈᓐᓈᓐᓈᓐᓈᓐ		229	271	285	272	258	245
M & I / Retrofit - GN Funds							
M & I / ᓄᓂᓂᓂᓐᓈᓐᓈᓐᓈᓐᓈᓐ - CMHC - ᓄᓐᓂᓐ							
ᓈᓄᓈᓐᓈᓐᓈᓐᓈᓐᓈᓐ (ᓈᓐᓈᓐ ᐸᓈᓐᓈᓐᓈᓐ)		156	160	148	156	154	166
M & I / Retrofit - CMHC Funded (not in total)							
ᐃᓐᓈᓐᓈᓐᓈᓐ		8	17	17	17	17	17
Mobile Equipment							
ᐸᓐᓈᓂᓂᓐᓈᓐ	Grise Fiord						
M & I / ᓄᓂᓂᓂᓐᓈᓐᓈᓐᓈᓐᓈᓐ - ᓄᓇᓂᓖᓐ ᓈᓄᓈᓐᓈᓐ							
ᓈᓄᓈᓐᓈᓐᓈᓐᓈᓐᓈᓐ		98	113	128	125	92	88
M & I / Retrofit - GN Funds							
M & I / ᓄᓂᓂᓂᓐᓈᓐᓈᓐᓈᓐᓈᓐ - CMHC - ᓄᓐᓂᓐ							
ᓈᓄᓈᓐᓈᓐᓈᓐᓈᓐᓈᓐ (ᓈᓐᓈᓐ ᐸᓈᓐᓈᓐᓈᓐ)		67	67	66	56	55	59
M & I / Retrofit - CMHC Funded (not in total)							
ᐃᓐᓈᓐᓈᓐᓈᓐ		4	8	8	8	8	8
Mobile Equipment							

ᐅᓕᓕᓂᓄᓐ ᐃᓕᓕᓂᓄᓐ ᐃᓕᓕᓐᓴᓐᓴᓐ ᐅᓕᓕᓂᓄᓐ 5-Year Capital Plan	ᐅᓕᓕᓂᓄᓐ	ᐃᓕᓕᓂᓄᓐ	ᐃᓕᓕᓂᓄᓐ	ᐃᓕᓕᓂᓄᓐ	ᐃᓕᓕᓂᓄᓐ	ᐃᓕᓕᓂᓄᓐ
	2005/2006 Revised Budget	2006/07 Budget	2007/08 Planned	2008/09 Planned	2009/10 Planned	2010/11 Planned
ᓴᓂᓂᓂᓄᓐ Qikiqtarjuaq						
M & I / ᓄᓕᓕᓂᓂᓄᓐᐅᓂᓄᓐ - ᓄᓇᓅᓐ ᓂᓴᓂᓂᓄᓐ ᓂᓴᓂᓂᓄᓐᐅᓂᓄᓐ	196	229	269	268	184	175
M & I / Retrofit - GN Funds						
M & I / ᓄᓕᓕᓂᓂᓄᓐᐅᓂᓄᓐ - CMHC - ᓄᓂᓄᓐ ᓂᓴᓂᓂᓄᓐᐅᓂᓄᓐ (ᓂᓴᓂᓄᓐ ᐅᓂᓄᓐᓴᓐ)	134	136	139	111	110	118
M & I / Retrofit - CMHC Funded (not in total)						
ᐃᓂᓂᓂᓄᓐ Mobile Equipment	8	13	13	13	13	13
ᓴᓂᓂᓂᓄᓐ Resolute Bay						
M & I / ᓄᓕᓕᓂᓂᓄᓐᐅᓂᓄᓐ - ᓄᓇᓅᓐ ᓂᓴᓂᓂᓄᓐ ᓂᓴᓂᓂᓄᓐᐅᓂᓄᓐ	98	116	126	125	99	32
M & I / Retrofit - GN Funds						
M & I / ᓄᓕᓕᓂᓂᓄᓐᐅᓂᓄᓐ - CMHC - ᓄᓂᓄᓐ ᓂᓴᓂᓂᓄᓐᐅᓂᓄᓐ (ᓂᓴᓂᓄᓐ ᐅᓂᓄᓐᓴᓐ)	67	68	65	56	59	22
M & I / Retrofit - CMHC Funded (not in total)						
ᐃᓂᓂᓂᓄᓐ Mobile Equipment	4	8	8	8	8	8
ᓴᓂᓂᓂᓄᓐ Sanikiluaq						
M & I / ᓄᓕᓕᓂᓂᓄᓐᐅᓂᓄᓐ - ᓄᓇᓅᓐ ᓂᓴᓂᓂᓄᓐ ᓂᓴᓂᓂᓄᓐᐅᓂᓄᓐ	164	191	213	203	170	71
M & I / Retrofit - GN Funds						
M & I / ᓄᓕᓕᓂᓂᓄᓐᐅᓂᓄᓐ - CMHC - ᓄᓂᓄᓐ ᓂᓴᓂᓂᓄᓐᐅᓂᓄᓐ (ᓂᓴᓂᓄᓐ ᐅᓂᓄᓐᓴᓐ)	111	113	110	123	101	48
M & I / Retrofit - CMHC Funded (not in total)						
ᐃᓂᓂᓂᓄᓐ Mobile Equipment	9	17	17	17	17	17

ᑕᓕᓕᓄᓕ ᐃᓴᓴᑭᓄᓕ ᐃᑭᓂᐳᑲᓄᓕ ᐃᓴᓴᐅᓂᓴᓄᓂ 5-Year Capital Plan	ᐃᓴᓴᑭᓂᓴᓂᓴ	ᐃᓴᓴᑭᓂᓴᓂᓴ	ᐃᓴᓴᑭᓂᓴᓂᓴ	ᐃᓴᓴᑭᓂᓴᓂᓴ	ᐃᓴᓴᑭᓂᓴᓂᓴ	ᐃᓴᓴᑭᓂᓴᓂᓴ
	2005/2006 Revised Budget	2006/07 Budget	2007/08 Planned	2008/09 Planned	2009/10 Planned	2010/11 Planned
ᓴᑭᓴᓴᑕᓂᓴ - ᓄᓂᑭᓂᓴᓴᓂᓴ Qikiqtaaluk - various						
ᐃᓴᓴᑭᓂᓴᓂᓴᓂᓴᓂᓴᓂᓴᓂᓴ ᐃᓴᓴᑭᓂᓴᓂᓴᓂᓴ	1,500	1,500	1,000	1,000	1,000	1,000
Homeownership Programs						
ᐃᓴᓴᑭᓂᓴᓂᓴᓂᓴᓂᓴᓂᓴᓂᓴ ᐃᓴᓴᑭᓂᓴᓂᓴᓂᓴ	-	54	54	54	54	54
Seniors and Disabled Preventive Maintenance						
ᓂᑲᑲᓂᓴᓂᓴ ᓴᑭᓴᓴᑕᓂᓴ Total Qikiqtaaluk Region	-	5,760	5,605	5,462	4,986	4,651
ᑭᓴᓴᓴᓂᓴ Kivalliq Region						
ᐃᓴᓴᑭᓂᓴ Arviat						
M & I / ᓄᓂᓴᓴᓂᓴᓂᓴᓂᓴᓂᓴᓂᓴ - ᓄᓇᑭᓂᓴ ᓄᓴᓴᓴᓂᓴᓂᓴ						
ᓴᓴᓴᓴᓂᓴᓂᓴᓂᓴᓂᓴᓂᓴᓂᓴᓂᓴ	357	380	398	395	466	443
M & I / Retrofit - GN Funds						
M & I / ᓄᓂᓴᓴᓂᓴᓂᓴᓂᓴᓂᓴᓂᓴᓂᓴ - CMHC - ᓄᓴᓴᓴ						
ᓴᓴᓴᓴᓂᓴᓂᓴᓂᓴᓂᓴᓂᓴᓂᓴᓂᓴ (ᓴᓴᓴᓴᓂᓴ ᑕᓴᓴᓴᓴᓴᓴᓂᓴᓂᓴ)	243	225	205	283	278	300
M & I / Retrofit - CMHC Funded (not in total)						
ᐃᓴᓴᑭᓂᓴᓂᓴᓂᓴᓂᓴᓂᓴ	25	34	34	34	34	34
Mobile Equipment						
ᓴᓴᓴᓴᓂᓴ Baker Lake						
M & I / ᓄᓂᓴᓴᓂᓴᓂᓴᓂᓴᓂᓴᓂᓴᓂᓴ - ᓄᓇᑭᓂᓴ ᓄᓴᓴᓴᓂᓴᓂᓴ						
ᓴᓴᓴᓴᓂᓴᓂᓴᓂᓴᓂᓴᓂᓴᓂᓴᓂᓴ	357	379	459	392	360	342
M & I / Retrofit - GN Funds						
M & I / ᓄᓂᓴᓴᓂᓴᓂᓴᓂᓴᓂᓴᓂᓴᓂᓴᓂᓴ - CMHC - ᓄᓴᓴᓴ						
ᓴᓴᓴᓴᓂᓴᓂᓴᓂᓴᓂᓴᓂᓴᓂᓴᓂᓴ (ᓴᓴᓴᓴᓂᓴ ᑕᓴᓴᓴᓴᓴᓂᓴᓂᓴ)	243	224	238	214	215	231
M & I / Retrofit - CMHC Funded (not in total)						
ᐃᓴᓴᑭᓂᓴᓂᓴᓂᓴᓂᓴᓂᓴᓂᓴ	28	40	40	40	40	40
Mobile Equipment						
ᐃᓄᓕᓴᓴᓂᓴ Chesterfield Inlet						
M & I / ᓄᓂᓴᓴᓂᓴᓂᓴᓂᓴᓂᓴᓂᓴᓂᓴ - ᓄᓇᑭᓂᓴ ᓄᓴᓴᓴᓂᓴᓂᓴ						
ᓴᓴᓴᓴᓂᓴᓂᓴᓂᓴᓂᓴᓂᓴᓂᓴᓂᓴ	178	188	259	260	147	140
M & I / Retrofit - GN Funds						

ᓕᓕᓕᓂᓄᓐ ᐃᓂᓂᓐᓂᓐ ᐃᓂᓂᓐᓂᓐ ᐃᓂᓂᓐᓂᓐ	ᐃᓂᓂᓐᓂᓐ					
	ᐃᓂᓂᓐᓂᓐ 2005/2006 Revised Budget	ᐃᓂᓂᓐᓂᓐ 2006/07 Budget	ᐃᓂᓂᓐᓂᓐ 2007/08 Planned	ᐃᓂᓂᓐᓂᓐ 2008/09 Planned	ᐃᓂᓂᓐᓂᓐ 2009/10 Planned	ᐃᓂᓂᓐᓂᓐ 2010/11 Planned
ᐃᓂᓂᓐᓂᓐ Chesterfield Inlet						
M & I / ᓄᓕᓂᓂᓐᓂᓐᓂᓐᓂᓐ - CMHC - ᓄᓂᓂᓐ						
ᓂᓂᓂᓐᓂᓐᓂᓐᓂᓐᓂᓐ (ᓂᓂᓂᓐ ᓕᓕᓂᓂᓐᓂᓐ)	122	112	134	89	88	94
M & I / Retrofit - CMHC Funded (not in total)						
ᐃᓂᓂᓐᓂᓐᓂᓐᓂᓐ	6	9	9	9	9	9
Mobile Equipment						
M & I / ᓄᓕᓂᓂᓐᓂᓐᓂᓐᓂᓐ - ᐃᓂᓂᓐᓂᓐᓂᓐᓂᓐ	-	474	-	-	-	-
Staff Housing New Supply (2 units)						
ᓂᓂᓂᓐ Coral Harbour						
M & I / ᓄᓕᓂᓂᓐᓂᓐᓂᓐᓂᓐ - ᓄᓂᓂᓐ ᓂᓂᓂᓐᓂᓐ						
ᓂᓂᓂᓐᓂᓐᓂᓐᓂᓐᓂᓐ	178	188	280	261	213	202
M & I / Retrofit - GN Funds						
M & I / ᓄᓕᓂᓂᓐᓂᓐᓂᓐᓂᓐ - CMHC - ᓄᓂᓂᓐ						
ᓂᓂᓂᓐᓂᓐᓂᓐᓂᓐᓂᓐ (ᓂᓂᓂᓐ ᓕᓕᓂᓂᓐᓂᓐ)	122	111	145	128	127	137
M & I / Retrofit - CMHC Funded (not in total)						
ᐃᓂᓂᓐᓂᓐᓂᓐᓂᓐ	9	17	17	17	17	17
Mobile Equipment						
ᓂᓂᓂᓐ Rankin Inlet						
M & I / ᓄᓕᓂᓂᓐᓂᓐᓂᓐᓂᓐ - ᓄᓂᓂᓐ ᓂᓂᓂᓐᓂᓐ						
ᓂᓂᓂᓐᓂᓐᓂᓐᓂᓐᓂᓐ	358	368	399	453	516	490
M & I / Retrofit - GN Funds						
M & I / ᓄᓕᓂᓂᓐᓂᓐᓂᓐᓂᓐ - CMHC - ᓄᓂᓂᓐ						
ᓂᓂᓂᓐᓂᓐᓂᓐᓂᓐᓂᓐ (ᓂᓂᓂᓐ ᓕᓕᓂᓂᓐᓂᓐ)	242	218	207	318	308	332
M & I / Retrofit - CMHC Funded (not in total)						
ᐃᓂᓂᓐᓂᓐᓂᓐᓂᓐ	24	33	33	33	33	33
Mobile Equipment						
ᓂᓂᓂᓐ Repulse Bay						
M & I / ᓄᓕᓂᓂᓐᓂᓐᓂᓐᓂᓐ - ᓄᓂᓂᓐ ᓂᓂᓂᓐᓂᓐ						
ᓂᓂᓂᓐᓂᓐᓂᓐᓂᓐᓂᓐ	178	251	278	254	190	158
M & I / Retrofit - GN Funds						

ᐅᓇᓂᓐᓂᓇᐅᓄᓐᓂᓐ 5-Year Capital Plan	ᐅᓄᓂᓐᓂᓇᐅᓄᓐᓂᓐ	ᐅᓄᓂᓐᓂᓇᐅᓄᓐᓂᓐ	ᐅᓄᓂᓐᓂᓇᐅᓄᓐᓂᓐ	ᐅᓄᓂᓐᓂᓇᐅᓄᓐᓂᓐ	ᐅᓄᓂᓐᓂᓇᐅᓄᓐᓂᓐ	ᐅᓄᓂᓐᓂᓇᐅᓄᓐᓂᓐ
	2005/2006 Revised Budget	2006/07 Budget	2007/08 Planned	2008/09 Planned	2009/10 Planned	2010/11 Planned
ᐅᓄᓂᓐᓂᓇᐅᓄᓐᓂᓐ Cambridge Bay						
M & I / ᓄᓂᓂᓐᓂᓇᐅᓄᓐᓂᓐ - CMHC - ᓄᓄᓂᓐ						
ᓄᓄᓂᓐᓂᓇᐅᓄᓐᓂᓐ (ᓄᓄᓂᓐ ᐅᓂᓄᓂᓐᓂᓇᐅᓄᓐᓂᓐ)	215	219	218	214	211	228
M & I / Retrofit - CMHC Funded (not in total)						
ᐅᓄᓂᓐᓂᓇᐅᓄᓐᓂᓐ	21	27	27	27	27	27
Mobile Equipment						
M & I / ᓄᓂᓂᓐᓂᓇᐅᓄᓐᓂᓐ - ᐅᓄᓂᓐᓂᓇᐅᓄᓐᓂᓐ	30	50	-	-	-	-
M & I / Retrofit - Staff Housing						
ᐅᓄᓂᓐᓂᓇᐅᓄᓐᓂᓐ Gjoa Haven						
M & I / ᓄᓂᓂᓐᓂᓇᐅᓄᓐᓂᓐ - ᓄᓄᓂᓐ ᓂᓄᓂᓐᓂᓇᐅᓄᓐᓂᓐ						
ᓄᓄᓂᓐᓂᓇᐅᓄᓐᓂᓐ	252	290	325	333	284	270
M & I / Retrofit - GN Funds						
M & I / ᓄᓂᓂᓐᓂᓇᐅᓄᓐᓂᓐ - CMHC - ᓄᓄᓂᓐ						
ᓄᓄᓂᓐᓂᓇᐅᓄᓐᓂᓐ (ᓄᓄᓂᓐ ᐅᓂᓄᓂᓐᓂᓇᐅᓄᓐᓂᓐ)	171	172	168	171	169	182
M & I / Retrofit - CMHC Funded (not in total)						
ᐅᓄᓂᓐᓂᓇᐅᓄᓐᓂᓐ	18	22	22	22	22	22
Mobile Equipment						
ᐅᓄᓂᓐᓂᓇᐅᓄᓐᓂᓐ Kugaaruk						
M & I / ᓄᓂᓂᓐᓂᓇᐅᓄᓐᓂᓐ - ᓄᓄᓂᓐ ᓂᓄᓂᓐᓂᓇᐅᓄᓐᓂᓐ						
ᓄᓄᓂᓐᓂᓇᐅᓄᓐᓂᓐ	139	188	204	193	142	135
M & I / Retrofit - GN Funds						
M & I / ᓄᓂᓂᓐᓂᓇᐅᓄᓐᓂᓐ - CMHC - ᓄᓄᓂᓐ						
ᓄᓄᓂᓐᓂᓇᐅᓄᓐᓂᓐ (ᓄᓄᓂᓐ ᐅᓂᓄᓂᓐᓂᓇᐅᓄᓐᓂᓐ)	95	111	104	86	85	91
M & I / Retrofit - CMHC Funded (not in total)						
ᐅᓄᓂᓐᓂᓇᐅᓄᓐᓂᓐ	6	9	9	9	9	9
Mobile Equipment						
ᐅᓄᓂᓐᓂᓇᐅᓄᓐᓂᓐ Kugluktuk						
M & I / ᓄᓂᓂᓐᓂᓇᐅᓄᓐᓂᓐ - ᓄᓄᓂᓐ ᓂᓄᓂᓐᓂᓇᐅᓄᓐᓂᓐ						
ᓄᓄᓂᓐᓂᓇᐅᓄᓐᓂᓐ	327	359	432	436	397	377
M & I / Retrofit - GN Funds						

	ᐊᓐᓂᓐᐅᓐᓂᓐ	ᐊᓐᓂᓐᐅᓐᓂᓐ	ᐊᓐᓂᓐᐅᓐᓂᓐ	ᐊᓐᓂᓐᐅᓐᓂᓐ	ᐊᓐᓂᓐᐅᓐᓂᓐ	ᐊᓐᓂᓐᐅᓐᓂᓐ
ᐅᓐᓂᓐᐅᓐᓂᓐ ᐊᓐᓂᓐᐅᓐᓂᓐ	2005/2006	2006/07	2007/08	2008/09	2009/10	2010/11
5-Year Capital Plan	Revised Budget	Budget	Planned	Planned	Planned	Planned
ᖅᓂᓐᐅᓐᓂᓐ Kugluktuk						
M & I / ᓄᓕᓐᓂᓐᐅᓐᐅᓐᐅᓐ - CMHC - ᓄᓐᓂᓐ						
ᓐᓂᓐᐅᓐᓂᓐᓂᓐᐅᓐᐅᓐ (ᓐᓂᓐ ᐅᓐᐅᓐᐅᓐᓂᓐ)	223	212	224	240	236	255
M & I / Retrofit - CMHC Funded (not in total)						
ᐅᓐᓂᓐᐅᓐᓂᓐ	23	28	28	28	28	28
Mobile Equipment						
ᐅᓐᐅᓐᐅᓐ Taloyoak						
M & I / ᓄᓕᓐᓂᓐᐅᓐᐅᓐᐅᓐ - ᓄᓐᓂᓐ ᓱᓂᓐᓂᓐ						
ᓐᓂᓐᐅᓐᓂᓐᓂᓐᐅᓐᐅᓐ	227	251	278	262	427	85
M & I / Retrofit - GN Funds						
M & I / ᓄᓕᓐᓂᓐᐅᓐᐅᓐᐅᓐ - CMHC - ᓄᓐᓂᓐ						
ᓐᓂᓐᐅᓐᓂᓐᓂᓐᐅᓐᐅᓐ (ᓐᓂᓐ ᐅᓐᐅᓐᐅᓐᓂᓐ)	154	149	144	146	252	57
M & I / Retrofit - CMHC Funded (not in total)						
ᐅᓐᓂᓐᐅᓐᓂᓐ	15	19	19	19	19	19
Mobile Equipment						
ᖅᓂᓐᐅᓐᓂᓐ - ᓄᓐᓂᓐᐅᓐᐅᓐ Kitikmeot - various						
ᐊᓐᓂᓐᐅᓐᓂᓐᓂᓐᐅᓐᐅᓐ ᐱᓕᓱᓐᐅᓐᐅᓐ	675	675	450	450	450	450
Homeownership Programs						
ᐊᓐᓂᓐᐅᓐᓂᓐᓂᓐᐅᓐᐅᓐ ᐱᓕᓱᓐᐅᓐᐅᓐ	-	44	44	44	44	44
Seniors and Disabled Preventive Maintenance						
ᓂᓐᐅᓐᐅᓐᓂᓐ ᖅᓂᓐᐅᓐᓂᓐ Total Kitikmeot Region	-	2,331	2,259	2,240	2,203	1,803
ᓄᓐᓂᓐ ᐅᓐᓂᓐᐅᓐᐅᓐᐅᓐ ᓂᓐᐅᓐᐅᓐᓂᓐ	-	20,588	12,813	11,959	11,105	10,251
Total Nunavut Housing Corporation						
ᓂᓐᐅᓐᐅᓐᓂᓐ Grand Total	-	103,540	78,836	75,789	63,357	50,090

