



ᐱᑦᓄᓇᓂᓄᓐ ᐱᑦᓄᓇᓂᓄᓐ
MAIN ESTIMATES
2003-2004

ᐱᑦᓄᓇᓂᓄᓐ
ᐱᑦᓄᓇᓂᓄᓐ ᐱᑦᓄᓇᓂᓄᓐ

Prepared by:
The Department of Finance

ᐱᑦᓄᓇᓂᓄᓐ ᐱᑦᓄᓇᓂᓄᓐ
ᐱᑦᓄᓇᓂᓄᓐ ᐱᑦᓄᓇᓂᓄᓐ
ᐱᑦᓄᓇᓂᓄᓐ
ᐱᑦᓄᓇᓂᓄᓐ

6th Session of the
1st Legislative Assembly
March 2003
Iqaluit, Nunavut

CE DOCUMENT EST AUSSI DISPONIBLE EN INNUINAQTUN ET EN FRANÇAIS.
UNA MAKPIGAK PENAGEALIK OKAKHIMAYUNIK INUKTITUN INOENAKTULO.

EXCERPTS FROM THE BATHURST MANDATE

“...Healthy Communities, Simplicity and Unity

TABLE OF CONTENTS

SUMMARY OF INFORMATION

Introduction	vi
Graphs	viii
Summary of Revenues	ix
Summary of Operations and Maintenance Expenditures	x
Summary of Capital Expenditures	xi
Summary of Total Expenditures	xii
Distribution of Budget – Operations and Maintenance Expenditures	xiii

Estimates of Expenditures by Department

Legislative Assembly	1-1
Executive and Intergovernmental Affairs	2-1
Finance	3-1
Human Resources	4-1
Justice	5-1
Public Works and Services	6-1
Community Government and Transportation	7-1
Culture, Language, Elders and Youth	8-1
Education	9-1
Health and Social Services	10-1
Sustainable Development	11-1
Nunavut Housing Corporation	12-1

Appendices

Glossary	A-1
Budget Development Process of the Government of Nunavut	B-1



INTRODUCTION: THE 2003 – 2004 MAIN ESTIMATES

The Main Estimates presented to the Legislative Assembly represent the Government of Nunavut's proposed appropriations for the 2003-2004 fiscal year, for planned operation and maintenance expenditures. The Main Estimates reflect the priorities of government as reflected in the Bathurst Mandate and is also consistent with departmental Business Plans. The Main Estimates detail all expenditures projected to be incurred, and all revenues projected to be earned, during the twelve-month period beginning April 1, 2003 and ending March 31, 2004.

This document, along with the Budget Address, Capital Estimates, and departmental Business Plans, constitute the 2003-2004 Budget of the Government of Nunavut.

The Legislative Assembly approved Appropriation (Capital) Act, 2003-2004 in November, 2002, authorizing the Government of Nunavut to make capital expenditures for the fiscal year ending March 31, 2004.

The Legislative Assembly is requested to appropriate funds at the departmental level for operating expenditures for the fiscal year ending March 31, 2004. The estimated expenditures identify the total operating requirements for individual departments, and additional descriptive information on departmental expenditures is provided by branch. Basic descriptions of these departmental branches are included in the Main Estimates to enhance the understanding of public expenditures and ongoing responsibilities of program managers.

This document provides the Legislative Assembly with information on operations and maintenance expenditures at the control object level for compensation and benefits and grants and contributions, and at the standard object level for other expenditures. A summary of the Capital Estimates already approved, is included in the 2003-2004 Main Estimates to provide the Legislative Assembly with information which integrates both estimated capital and operating expenditures and identifies the total requirements for individual departments. Revenue is presented at a summary level by major revenue category.

Detailed information relevant to the Main Estimates is provided in the following areas for each department, as applicable:

- Accounting Structure Chart (how the department's financial accounts are organized)
- Departmental Summary (including mission and graph on the allocation of proposed expenditures to major branches)
- Branch Summary (appropriation requirements by control object and standard object)
- Grants and Contributions
- Work Performed on Behalf of Third Parties
- Information Items
- Regional Distribution of Budget

ዲሲ-ጠቅላይ ስልጠና ለግብርና ስራ
SUMMARY OF REVENUES

	የሰው ጊዜ ጠቅላይ ስልጠና 2003-2004 Main Estimates (\$000)	የተሻሻለው ግብርና ጠቅላይ ስልጠና 2002-2003 Revised Estimates (\$000)	የሰው ጊዜ ጠቅላይ ስልጠና 2002-2003 Main Estimates (\$000)
ጠቅላይ ስልጠና ለግብርና ስራ			
የግብርና ስራ ለግብርና ስራ ግብርና ስራ	666,488	606,301	632,646
Formula Financing Arrangement			
ጠቅላይ ስልጠና ለግብርና ስራ ስራ	58,095	57,431	49,200
Other Federal Transfers			
ጠቅላይ ስልጠና ለግብርና ስራ ስራ	724,583	663,732	681,846
ዲሲ ስራ ስራ ስራ ስራ ስራ ስራ			
ዲሲ ስራ ስራ ስራ ስራ ስራ ስራ	16,013	16,013	10,241
Personal Income Tax			
ሌሎች ስራ ስራ ስራ ስራ ስራ ስራ	3,000	2,110	1,470
Corporate Income Tax			
ግብርና ስራ ስራ ስራ ስራ ስራ ስራ	4,457	4,457	4,000
Fuel Tax			
ሌሎች ስራ ስራ ስራ ስራ ስራ ስራ	3,223	3,223	3,000
Property Tax and School Levies			
ሌሎች ስራ ስራ ስራ ስራ ስራ ስራ	6,502	6,502	7,785
Tobacco Tax			
ሌሎች ስራ ስራ ስራ ስራ ስራ ስራ	5,125	5,125	4,500
Payroll Tax			
ሌሎች ስራ ስራ ስራ ስራ ስራ ስራ	429	429	300
Insurance Taxes			
ሌሎች ስራ ስራ ስራ ስራ ስራ ስራ	1,822	2,044	2,044
Liquor Commission Net Revenues			
ሌሎች ስራ ስራ ስራ ስራ ስራ ስራ	-	-	2,300
Power Corporation Dividend			
ሌሎች ስራ ስራ ስራ ስራ ስራ ስራ	9,844	9,844	9,400
Rental Recovery - Staff Housing			
ሌሎች ስራ ስራ ስራ ስራ ስራ ስራ	14,056	15,056	18,600
Other Revenues			
ሌሎች ስራ ስራ ስራ ስራ ስራ ስራ	64,471	64,803	63,640
ሌሎች ስራ ስራ ስራ ስራ ስራ ስራ	789,054	728,535	745,486
TOTAL REVENUES			

የሰው ጊዜ ስራ ስራ ስራ ስራ ስራ ስራ 2003-2004-ገ

ᓇᓇᓕᓂᓄᓄᓄ ᓄᓄᓄᓄᓄᓄᓄᓄ ᓄᓄᓄᓄᓄᓄᓄᓄᓄᓄᓄ ᓄᓄᓄᓄᓄᓄᓄᓄᓄᓄᓄᓄ

SUMMARY OF OPERATIONS AND MAINTENANCE EXPENDITURES

ᓄᓄᓄᓄᓄᓄᓄᓄᓄᓄᓄᓄᓄ	ᓄᓄᓄᓄᓄᓄᓄᓄᓄᓄᓄᓄᓄ	ᓄᓄᓄᓄᓄᓄᓄᓄᓄᓄᓄᓄᓄ
ᓄᓄᓄᓄᓄᓄᓄᓄᓄᓄᓄᓄᓄ	ᓄᓄᓄᓄᓄᓄᓄᓄᓄᓄᓄᓄᓄ	ᓄᓄᓄᓄᓄᓄᓄᓄᓄᓄᓄᓄᓄ
2003-2004	2002-2003	2002-2003
Main	Revised	Main
Estimates	Estimates	Estimates
(\$000)	(\$000)	(\$000)

- ᓄᓄᓄᓄᓄᓄᓄᓄᓄᓄᓄᓄᓄᓄᓄᓄᓄᓄᓄᓄᓄᓄᓄᓄᓄᓄᓄᓄᓄᓄᓄᓄᓄᓄᓄ
- Office of the Legislative Assembly**
- ᓄᓄᓄᓄᓄᓄᓄᓄᓄᓄᓄᓄᓄᓄᓄᓄᓄᓄᓄᓄᓄᓄᓄᓄᓄᓄᓄᓄᓄᓄᓄᓄᓄᓄᓄ
- Executive and Intergovernmental Affairs**
- ᓄᓄᓄᓄᓄᓄᓄᓄᓄᓄᓄᓄᓄᓄᓄᓄᓄᓄᓄᓄᓄᓄᓄᓄᓄᓄᓄᓄᓄᓄᓄᓄᓄᓄᓄ
- Finance**
- ᓄᓄᓄᓄᓄᓄᓄᓄᓄᓄᓄᓄᓄᓄᓄᓄᓄᓄᓄᓄᓄᓄᓄᓄᓄᓄᓄᓄᓄᓄᓄᓄᓄᓄᓄ
- Human Resources**
- ᓄᓄᓄᓄᓄᓄᓄᓄᓄᓄᓄᓄᓄᓄᓄᓄᓄᓄᓄᓄᓄᓄᓄᓄᓄᓄᓄᓄᓄᓄᓄᓄᓄᓄᓄ
- Justice**
- ᓄᓄᓄᓄᓄᓄᓄᓄᓄᓄᓄᓄᓄᓄᓄᓄᓄᓄᓄᓄᓄᓄᓄᓄᓄᓄᓄᓄᓄᓄᓄᓄᓄᓄᓄ
- Public Works and Services**
- ᓄᓄᓄᓄᓄᓄᓄᓄᓄᓄᓄᓄᓄᓄᓄᓄᓄᓄᓄᓄᓄᓄᓄᓄᓄᓄᓄᓄᓄᓄᓄᓄᓄᓄᓄ
- Community Government and Transportation**
- ᓄᓄᓄᓄᓄᓄᓄᓄᓄᓄᓄᓄᓄᓄᓄᓄᓄᓄᓄᓄᓄᓄᓄᓄᓄᓄᓄᓄᓄᓄᓄᓄᓄᓄᓄ
- Culture, Language, Elders and Youth**
- ᓄᓄᓄᓄᓄᓄᓄᓄᓄᓄᓄᓄᓄᓄᓄᓄᓄᓄᓄᓄᓄᓄᓄᓄᓄᓄᓄᓄᓄᓄᓄᓄᓄᓄᓄ
- Education**
- ᓄᓄᓄᓄᓄᓄᓄᓄᓄᓄᓄᓄᓄᓄᓄᓄᓄᓄᓄᓄᓄᓄᓄᓄᓄᓄᓄᓄᓄᓄᓄᓄᓄᓄᓄ
- Health and Social Services**
- ᓄᓄᓄᓄᓄᓄᓄᓄᓄᓄᓄᓄᓄᓄᓄᓄᓄᓄᓄᓄᓄᓄᓄᓄᓄᓄᓄᓄᓄᓄᓄᓄᓄᓄᓄ
- Sustainable Development**
- ᓄᓄᓄᓄᓄᓄᓄᓄᓄᓄᓄᓄᓄᓄᓄᓄᓄᓄᓄᓄᓄᓄᓄᓄᓄᓄᓄᓄᓄᓄᓄᓄᓄᓄᓄ
- Nunavut Housing Corporation**
- ᓄᓄᓄᓄᓄᓄᓄᓄᓄᓄᓄᓄᓄᓄᓄᓄᓄᓄᓄᓄᓄᓄᓄᓄᓄᓄᓄᓄᓄᓄᓄᓄᓄᓄᓄ

ᓄᓕᓐᓂᓐᓂᓐ ᓂᓐᓂᓐᓂᓐ ᓂᓐᓂᓐᓂᓐ
SUMMARY OF CAPITAL EXPENDITURES

	ᓂᓐᓂᓐᓂᓐ ᓂᓐᓂᓐᓂᓐ 2003-2004 Main Estimates (\$000)	ᓂᓐᓂᓐᓂᓐ ᓂᓐᓂᓐᓂᓐ 2002-2003 Revised Estimates (\$000)	ᓂᓐᓂᓐᓂᓐ ᓂᓐᓂᓐᓂᓐ 2002-2003 Main Estimates (\$000)
ᓂᓐᓂᓐᓂᓐ ᓂᓐᓂᓐᓂᓐ Office of the Legislative Assembly	-	280	180
ᓂᓐᓂᓐᓂᓐ ᓂᓐᓂᓐᓂᓐ Executive and Intergovernmental Affairs	-	-	-
ᓂᓐᓂᓐᓂᓐ Finance	-	390	-
ᓂᓐᓂᓐᓂᓐ Human Resources	-	150	-
ᓂᓐᓂᓐᓂᓐ Justice	1,560	1,059	720
ᓂᓐᓂᓐᓂᓐ ᓂᓐᓂᓐᓂᓐ Public Works and Services	10,680	10,551	6,320
ᓂᓐᓂᓐᓂᓐ ᓂᓐᓂᓐᓂᓐ ᓂᓐᓂᓐᓂᓐ Community Government and Transportation	27,225	31,441	17,050
ᓂᓐᓂᓐᓂᓐ Culture, Language, Elders and Youth	1,035	987	535
ᓂᓐᓂᓐᓂᓐ Education	23,985	23,499	19,500
ᓂᓐᓂᓐᓂᓐ ᓂᓐᓂᓐᓂᓐ ᓂᓐᓂᓐᓂᓐ Health and Social Services	55,790	15,150	5,860
ᓂᓐᓂᓐᓂᓐ Sustainable Development	2,520	4,396	2,470
ᓂᓐᓂᓐᓂᓐ ᓂᓐᓂᓐᓂᓐ Nunavut Housing Corporation	20,285	34,081	17,700
ᓂᓐᓂᓐᓂᓐ ᓂᓐᓂᓐᓂᓐ Total Capital	143,080	121,984	70,335

በግብርና ለውጥ ለውጥ ለውጥ
TOTAL EXPENDITURES

የግብርና ለውጥ ለውጥ 2003-2004 Main Estimates (\$000)	የግብርና ለውጥ ለውጥ ለውጥ ለውጥ 2002-2003 Revised Estimates (\$000)	የግብርና ለውጥ ለውጥ 2002-2003 Main Estimates (\$000)
---	--	---

n





ԼԵԵԵԴՅԱԴՅ
ՈՈԿՅԱԴ



OFFICE OF THE
LEGISLATIVE ASSEMBLY

የግብርና ስርዓት ልማት ሚኒስቴር

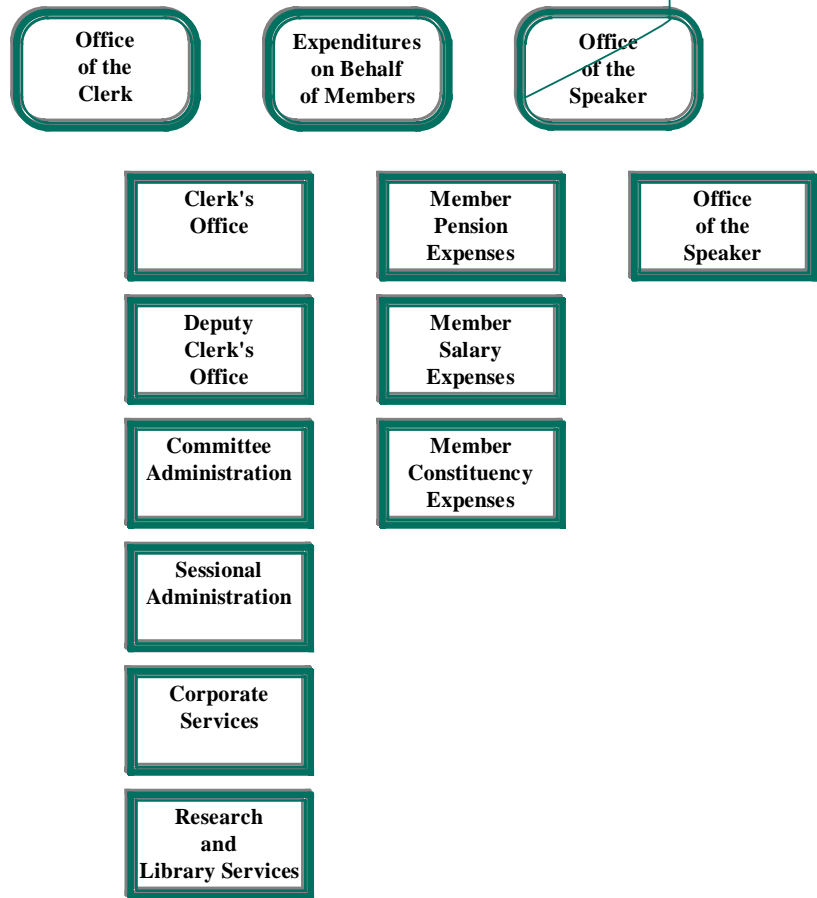
የግብርና ስርዓት ልማት ሚኒስቴር



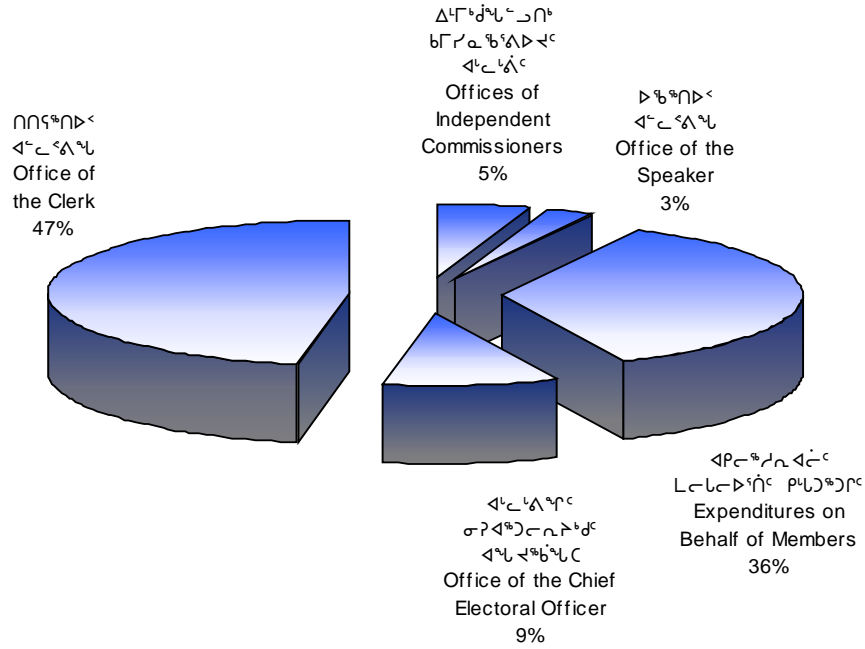
Kevin O'Brien
Speaker of the Legislative Assembly

John Quirke
Clerk of the Legislative Assembly

ACCOUNTING STRUCTURE CHART



ጠቅላይ ልሳን ጠቅላይ ልሳን DETAIL OF EXPENDITURES



የገንዘብ ዝርዝር

ጠቅላይ ልሳን ጠቅላይ ልሳን ልሳን ልሳን
ጋራ ልሳን ልሳን ልሳን ልሳን
ጋራ ልሳን ልሳን ልሳን ልሳን
ጋራ ልሳን ልሳን ልሳን ልሳን

DESCRIPTION

Compensation and Benefits
Grants and Contributions
Travel and Transportation

የገንዘብ ዝርዝር	ጠቅላይ ልሳን ልሳን ልሳን ልሳን	ጠቅላይ ልሳን ልሳን ልሳን ልሳን
2003-2004	2002-2003	2002-2003
Main Estimates	Revised Estimates	Main Estimates
(\$000)	(\$000)	(\$000)

5,918	5,545	5,545
-	-	-
1,688	1,776	1,776

ᓂᓂᓂᓂᓂᓂᓂᓂᓂ ᓂᓂᓂᓂᓂᓂᓂᓂ ᓂᓂᓂᓂᓂᓂᓂᓂᓂᓂ ᓂᓂᓂᓂᓂᓂᓂᓂᓂ
DISTRIBUTION OF OPERATIONS AND MAINTENANCE BUDGET

	ᓂᓂᓂᓂᓂᓂᓂᓂᓂ Headquarters (\$000)	ᓂᓂᓂᓂᓂᓂᓂᓂᓂ Qikiqtaaluk (\$000)	ᓂᓂᓂᓂᓂᓂᓂᓂᓂ Kivalliq (\$000)	ᓂᓂᓂᓂᓂᓂᓂᓂᓂᓂ Kitikmeot (\$000)	ᓂᓂᓂᓂᓂᓂᓂᓂᓂᓂ Total (\$000)
ᓂᓂᓂᓂᓂᓂᓂᓂᓂᓂᓂ ᓂᓂᓂᓂᓂᓂᓂᓂᓂ ᓂᓂᓂᓂᓂᓂᓂᓂᓂ	5,918	-	-	-	5,918
Compensation and Benefits					
ᓂᓂᓂᓂᓂᓂᓂᓂᓂᓂᓂ ᓂᓂᓂᓂᓂᓂᓂᓂᓂ	-	-	-	-	-
Grants and Contributions					
ᓂᓂᓂᓂᓂᓂᓂᓂᓂᓂᓂ ᓂᓂᓂᓂᓂᓂᓂᓂᓂᓂ	1,688	-	-	-	1,688
Travel and Transportation					
ᓂᓂᓂᓂᓂᓂᓂᓂᓂᓂᓂᓂ ᓂᓂᓂᓂᓂᓂᓂᓂᓂ	359	-	-	-	359
Materials and Supplies					
ᓂᓂᓂᓂᓂᓂᓂᓂᓂᓂᓂᓂ ᓂᓂᓂᓂᓂᓂᓂᓂᓂᓂ	1,107	-	-	-	1,107
Purchased Services					
ᓂᓂᓂᓂᓂᓂᓂᓂᓂᓂᓂᓂ	-	-	-	-	-
Utilities					
ᓂᓂᓂᓂᓂᓂᓂᓂᓂᓂᓂᓂ ᓂᓂᓂᓂᓂᓂᓂᓂᓂᓂ	1,690	-	-	-	1,690
Contract Services					
ᓂᓂᓂᓂᓂᓂᓂᓂᓂᓂᓂᓂᓂ ᓂᓂᓂᓂᓂᓂᓂᓂᓂᓂᓂ	1,380	-	-	-	1,380
Fees and Payments					
ᓂᓂᓂᓂᓂᓂᓂᓂᓂᓂᓂᓂᓂ ᓂᓂᓂᓂᓂᓂᓂᓂᓂᓂ	847	-	-	-	847
Other Expenses					
ᓂᓂᓂᓂᓂᓂᓂᓂᓂᓂᓂᓂ ᓂᓂᓂᓂᓂᓂᓂᓂᓂᓂᓂᓂᓂᓂᓂ	12,989	-	-	-	12,989
Total Operations & Maintenance					



xSM5t p5
Z?msctQoE p9I



Paul Okalik

Anne C a f d

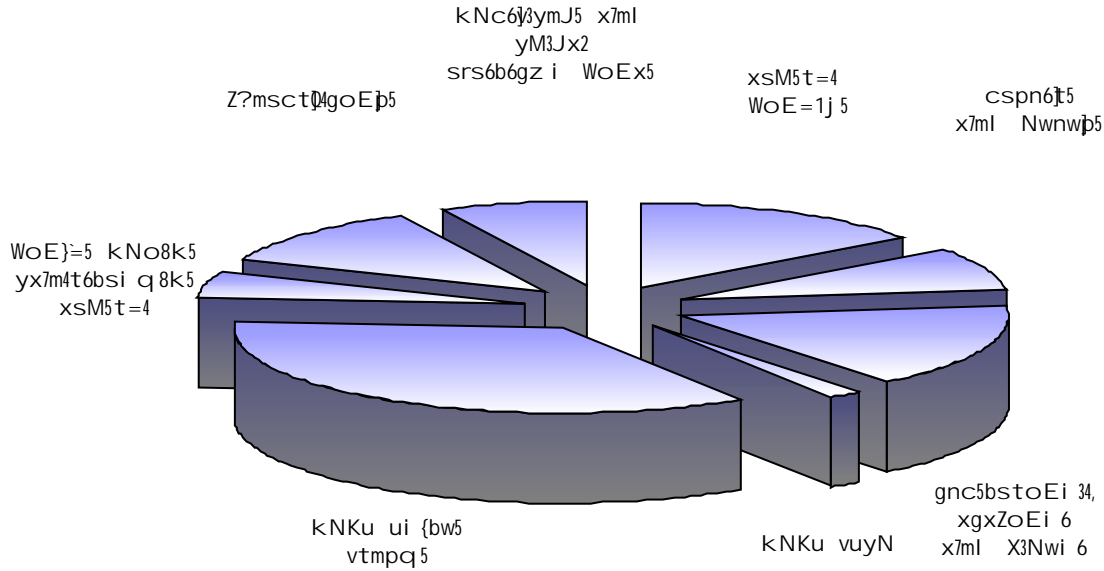
Da id Omilg it k

•	• •
■ ■	

W/4noxaymJ5

WoExE/z 5 xqct01i 6bcd9l A, ei d9l 09l Z?moEi 3j 5 grj xAt4nsJi 4, gn6t5tps9l t4l
grj xAbsd/sJi 4, kx5yps9l t4, cspn6ts9l t4l x7m gnZ4ni 4 gi yps9l t4 Z?m4f8k5 x7ml
b6v4fkz rN4fgw8N3k5, x7ml grj x4typsc5b6g5 yKo6ts9l t4l b6v4fkz Wp5yDbsJk5.

x=4g6ymi q5 xroExp5



ᐱᑦᑎᑦᑎᑦ	DESCRIPTION	ᐱᑦᑎᑦᑎᑦ ᐱᑦᑎᑦᑎᑦ ᐱᑦᑎᑦᑎᑦ		
		2003-2004 Main Estimates (\$000)	x6rQx3ymJ5 x3fi i b5 (\$000)	fNs/5 x3fi i b5 (\$000)
w6vNw/6tk5 xrosyx5 wvlyx9l		7,142		
g8i 6ft5 x7m wvlyx5		90		
i sDc5bDj5 wq CJj9l		1,364		
x9M)=oE0Jt5 hN4fj9l		271		
i s=6bs9l t4 Wp5yDt5		467		
§7m6ftk5		-		
ŷ8gjtA5 Wp5yDt5		912		
xroExò5 xro6hw0Jt9l		82		
xyq5 xroExò5		167		
ᐱᑦᑎᑦᑎᑦ ᐱᑦᑎᑦᑎᑦ ᐱᑦᑎᑦᑎᑦ	Total Operations & Maintenance	10,495	11,090	11,090
ᐱᑦᑎᑦᑎᑦ ᐱᑦᑎᑦᑎᑦ	Total Capital	-	-	-
ᐱᑦᑎᑦᑎᑦ ᐱᑦᑎᑦᑎᑦ	Total Expenditures	-	-	-

gnsM0JtoEp5, xgxZoEp5 x7ml X3Nwp5

gnsM0JtoEp5, xgxZop4f5 x7ml X3Nwp4f5 wvJ6gwc5b6g5 xSM5t=z 8i 4 WoE=1j 5
xSM5yt9i Q5 x7m grj x4t5yt9i Q5 ui {bw5 vtmpqb xSMi E/q 8i 4, Wl x6gu4 x6ftc6Lt4
eu3DN1i 3u4 x7ml xgxZtA5 scs0pQx3i 4u Z?m4f5 xgxZqtA5, moZqtA5, sXl z w/stqtA5
x7ml yK9ostJm/qtA5 mo4ym9i t4 Z?m4f5 to/sym0JtoxEym/q 8i 4. gnsM0JtoEp4f5
WoE=z 5 wvJ6gwc5b6g6 Z?m4f5 W?9oxi q8k5 gnsmt5tpq8k5 x7ml gn6bs/Exc6gi 4
n6r5tc5b6g5 xfi sl xq5g4f5 gn6t5tvstQi 4f5 kNKusbsJi 4 gnZ4ni 4.

ᐱᓐᓇᐱᓐᓇ	DESCRIPTION	ᐱᓐᓇᐱᓐᓇ ᐱᓐᓇᐱᓐᓇ 2003-2004 Main Estimates (\$000)	x6rQx3ymJ5 x3fi i b5 (\$000)	ᐱᓐᓇᐱᓐᓇ x3fi i b5 (\$000)
w6vNw/6tk5 xrosyx5 wvᐱᓐᓇᐱᓐᓇ		1,113		
g8i 6ft5 x7m wvᐱᓐᓇᐱᓐᓇ		-		
i sDc5bDᐱᓐᓇ wq CJᐱᓐᓇ		85		
x9M)=oE0Jt5 hN4fᐱᓐᓇ		64		
i s=6bs9i t4 Wp5yDt5		237		
ᐱᓐᓇᐱᓐᓇ		-		
ᐱᓐᓇᐱᓐᓇ Wp5yDt5		105		
xroExò5 xro6hw0Jt9i		6		
xyq5 xroExò5		71		
ᐱᓐᓇᐱᓐᓇ ᐱᓐᓇᐱᓐᓇ ᐱᓐᓇᐱᓐᓇ	Total Operations & Maintenance	1,681	2,329	2,329
ᐱᓐᓇᐱᓐᓇ ᐱᓐᓇᐱᓐᓇ	Total Capital	-	-	-
ᐱᓐᓇᐱᓐᓇ ᐱᓐᓇᐱᓐᓇ	Total Expenditures	1,681	2,329	2,329

kNK5 Z?mq5
ᐱᓐᓇᐱᓐᓇ xg6g4n5

cspn6t5 x7ml Nnwp5

ᐃ8N WoE=sJ6 vmpsc5b6S5 nN/si q8k5 x7ml wl oE/q8k5 NMs5tymJ5 Nn6bsi f5 x7ml
w7u4f6g5 cEbs/tA5 gnZ4ndtQ/sJ5 Z?m4f8k5 x7ml b6v4fkz rN4fgw8N3k5 gnZ4ndtQ/sJ5
Nn6bsi f5. ᐃ4fxl cEbs/4f5 gnZ4ndtQ/sJ5 xg6bs9l t4 wvJ6gw0Jbsc5b6g5 Z?m4f8k5
whmosChx6t9l Q5, X3Nstos6t9l Q5, xgo6t5yt9l Q5 x7ml cspnwt9l Q5, Wcyst9l Q5
WoExaJ5 cspn6bsi q5 ᐃ4fkz WoE=sJj 5.

ᐱᑦᑎᐱᑦ	DESCRIPTION	ᐱᑦᑎᐱᑦ	x6rQx3ymJ5	fNs/5
		ᐱᑦᑎᐱᑦ	x3fi i b5	x3fi i b5
		2003-2004		
		Main		
		Estimates		
		(\$000)	(\$000)	(\$000)
w6vN 6tk5 xr syx5 ᐃlyx9l		595		
g8i 6ft5 x7m wvᐃlyx5		-		
i sDc5bDᐃᑦ5 wq CJᐃᑦ9l		62		
x9M}=oE0Jᐃᑦ5 hN4fᐃᑦ9l		21		
i s=6bs9l t4 Wp5yDᐃᑦ5		15		
ᐃ7m6ftk5		-		
ᐃ8gᐃᑦtA5 Wp5yDᐃᑦ5		177		
xroExo5 xro6hw0Jᐃᑦ9l		9		
xyq5 xroExo5		6		
ᐱᑦᑎᐱᑦ ᐱᑦᑎᐱᑦ ᐱᑦᑎᐱᑦ	Total Operations & Maintenance	885	885	885
ᐱᑦᑎᐱᑦ ᐱᑦᑎᐱᑦ	Total Capital	-	-	-
ᐱᑦᑎᐱᑦ ᐱᑦᑎᐱᑦ	Total Expenditures	885	885	885

kNK5 Z?mq5
fNs/5 xg6g4n5

kNc6y3ymJ5 x7ml yM3Jx2 srs6b6gz i WoEx5

ᐅᐃᓂᓂᓂᓂ ᐅᓕᓕᓂᓂ ᐅᐃᓂᓂᓂᓂ Grants and Contributions	ᐅᐃᓂᓂᓂᓂ ᐅᐃᓂᓂᓂᓂᓂᓂ 2003-04 Main Estimates (\$000)	x6r0x3ymJ5 x3fi i b5 (\$000)	fNs/5 x3fi i b5 (\$000)
ᐅᐃᓂᓂᓂᓂ Contributions			
ᐅᐃᓂᓂᓂᓂ ᓂᓂᓂᓂᓂᓂᓂᓂᓂᓂᓂ WoE=z5 yKo6t4f5 x7ml Z?msct04goEp4f5, r[Z6gw9l t4 kNK5 Z?m4fq 8i 4, wvJ6gwc5b6S5 x7ml wMs=09l 05 skv9M4g5 srs6b6gu WQx6bsJ5 x7ml tudt0/q 8i . WoEcbs9l xb6g5 wkw5 yM3Jx3u vg0pct0q5, r[A6gwpsJ5 wko0ni 4 yM3Jx3u kNc6gk5.			
Inuit Circumpolar Conference		90	
ᐃᐅᓂᓂᓂᓂ ᐅᐃᓂᓂᓂᓂᓂ Total Contributions		90	90
ᐃᐅᓂᓂᓂᓂ ᐅᐃᓂᓂᓂᓂᓂᓂ ᐅᐃᓂᓂᓂᓂᓂ Total Grants and Contributions		90	90

kNK5 vuyNz 5

kNKu vunNsJ6 t4fx6bsymK vNbs2 Z?m4fq8k5 vunNsi xi z k5 xfi si E/z mo4ymt9I A moZos3=4Jx2 Wd/3JxqtA5. x0pQvn4Li Q5 vNbs2 x[A6g3ymi q8i fw8j 5 r[Z6g6tz tg5, wMq9I WoExE/q5 vunNs2 Wcys0pymK5 r[Z6gw9I i fw8u4 s}?] 8] 5 vNbu4, x7m WoExcc5b3uJ6 NI Nw6bsymJi 4 moZ3JxtA5 WoExnE/q8i 4. Nnsto4 %_u5 !)_j 5 kNKu Wd/3JxqtA5 NI Nw3yym9I t4 n8qi q8i 4 x7ml WoExnE/q8i 4 vmQ/Exc6bq8i 4 kNK5 vunNz 5b.

Nunavut Act

ᐱᓚᓚᑦᓂᑦᐅᑦ	DESCRIPTION	ᐱᓚᓚᑦᓂᑦᐅᑦ	x6r0x3ymJ5	ᓂᑦᓂᑦ/5
		ᐱᓚᓚᑦᓂᑦᐅᑦ	x3ᓂi i b5	x3ᓂi i b5
		2003-2004		
		Main		
		Estimates		
		(\$000)	(\$000)	(\$000)
w6vNw/6tk5 xrosyx5 wvJyx9I		79		
g8i 6ft5 x7m wvJyx5				
i sDc5bDᓂᓂ5 wq CJᓂᓂ9I		45		
x9M}=oE0Jᓂᓂ5 hN4fᓂᓂ9I		5		
i s=6bs9I t4 Wp5yDt5		7		
ᓂᓂᓂᓂᓂᓂ				
ᓂᓂᓂᓂᓂᓂ Wp5yDt5		33		
xroExᓂᓂ xro6hw0Jᓂᓂ9I		10		
xyq5 xroExᓂᓂ		6		
ᓂᓂᓂᓂᓂᓂ ᐱᓚᓚᑦᓂᑦᐅᑦ ᐱᓚᓚᓂᓂᓂᓂᓂᓂᓂᓂᓂᓂ	Total Operations & Maintenance	185	185	185
ᓂᓂᓂᓂᓂᓂ ᐱᓚᓚᓂᓂᓂᓂᓂᓂᓂᓂᓂᓂᓂ	Total Capital	-	-	-
ᓂᓂᓂᓂᓂᓂ ᐱᓚᓚᓂᓂᓂᓂᓂᓂᓂᓂᓂᓂᓂ	Total Expenditures	185	185	185

NI Nw6bsi q5 w6vNw/6bsMs6g5 xyu8i 4 r[Z3gw9l t4

ᑲᑲᓚᑲᑦ x6r0x3ymJ5 ᑲᑲᓚᑲᑦ/5
xg6g4n5 x3ᑲi i b5 x3ᑲi i b5
2003-2004
Main
Estimates
(\$000) (\$000) (\$000)

ᑲᑲᓚᑲᑦ ᑲᑲᓚᑲᑦᑎᐱᑦ ᐃᑲᑦᑎᐱᑦ

ᑲᑲᓚᑲᑦ !, !((#_at9l A kN5yx3us5 Z?m4fq5 xtoseMs3ymK5 wvJDtk5
xqctQAbsJj5 vNbs2 Z?m4fq8k5 ᑲᑲᓚᑲᑦ/c6t5yd9l Q5 xgo6tbsi z k5
kNKu kNᑲᑲtk5 ra9o6Xku xqDtq8k5. ᑲᑲᓚᑲᑦ/c6tbs0Jtq5
WQxoᑲᑲ6t9l Q5 x3ᑲAk5 dok5 G!)_k5H X3Nw0Jbsi x6t9l Q5 g8z =c3l t4
xq6bsymJu4 ᑲᑲᓚᑲᑦ x4gxi c6gu4 xgo6tbsi z k5 kNKu kNᑲᑲtk5
xqDtsJ6 ᑲᑲN xtosebsMs3ymJ6 mw @%, !((#_at9l A. vNbs2
Z?m4fq5 xSM5tpqb vtmpq5, ttC3ymJtA5 whmosDtcMs6g5
(#_@@_@_u4 Nnsto4f5, xq3y9l t4 kNKu kNᑲᑲtk5 ra9o6X3ys7j5
xqD7u4, m3ᑲo6vz 9l i ᑲᑲᓚᑲᑦ/c6tbsi q8k5 xqDtsJ5 x7ml x3ᑲAbᑲᑲ5
wvJDtQ/s9l t4 gi /s?4g5 xqDtq tA5. kNKu kNᑲᑲtk5 ra9o6X3yst5
x7ml] ᑲᑲᓚᑲᑦ x4gxi c6g5 xgo6tbsi z k5 kNKu kNᑲᑲtk5
ra9o6X3ysts9l i xqDtq5 moZ8a6tbsMs3ymJ6 JMw (, !((#_at9l A.

xw3Eo !, !(((u kNK5 Z?m4fq5 tAyMs3ymK5 WoEx4nu4
xgo6t5t/Exc3i 3u4 kNKu kNᑲᑲtk5 ra9o6X3ys7j5 xqDti4 x7ml
xtoseYmo6g5 wvJ6gwi 3j5 xqDtsJi4 @))#_@))\$_j5 ᑲᑲᓚᑲᑦ/oE8Ns2
x3ᑲAxi x5b=c6Lt4 ᑲᑲᓚᑲᑦ/c6tbsi 3j5 sk3i E/q8i4 NI Nw6bsymJi4.
gi s6vwi sJ6 ᑲᑲᓚᑲᑦ/i4 WoE=sJk5 mo4n3ymK5 wl oE/q8k5 xqDtsJ5
x7ml whmoxEMS3ym/q8i4 kNKu xgo6t5tp4f5 vtmpqb.

2,411

Nunavut Final Agreement

ᑲᑲᓚᑲᑦ ᐱᑦᑎᐱᑦᑎᐱᑦ Total Department	2,411	2,411	2,411
--	--------------	--------------	--------------

x[A6g3ymi q5 xsM0Jtk5 }6rsmw8NDtk9I xg6g4n5

	ᐱᐅᓕᓕᓐ Headquarters (\$000)	ᐅᓕᓕᓐ Qikiqtaaluk (\$000)	ᐅᓕᓕᓐ Kivalliq (\$000)	ᐅᓕᓕᓐ Kitikmeot (\$000)	ᐅᓕᓕᓐ Total (\$000)
w6vNw/6tk5 xrosyx5 wv}yx9I					7,142
g8i 6ft5 x7m wv}yx5					90
i sDc5bD}5 wq C}59I					1,364
x9M}=oE0J}5 hN4fb9I					271
i s=6bs9I t4 Wp5yDt5					467
§7m6ftk5					-
ÿ8g}tA5 Wp5yDt5					912
xroExò5 xro6hw0Jy9I					82
xyq5 xroExò5					167
ᐅᓕᓕᓐ ᐱᐅᓕᓕᓐ ᐱᐅᓕᓕᓐ Total Operations & Maintenance	10,495	-	-	-	10,495





ᐱᓂᐱᓂᓂᓂᓂᓂᓂᓂᓂᓂᓂ



FINANCE

የግብርና ስራ ስርዓት
ግብርና ስራ ስርዓት

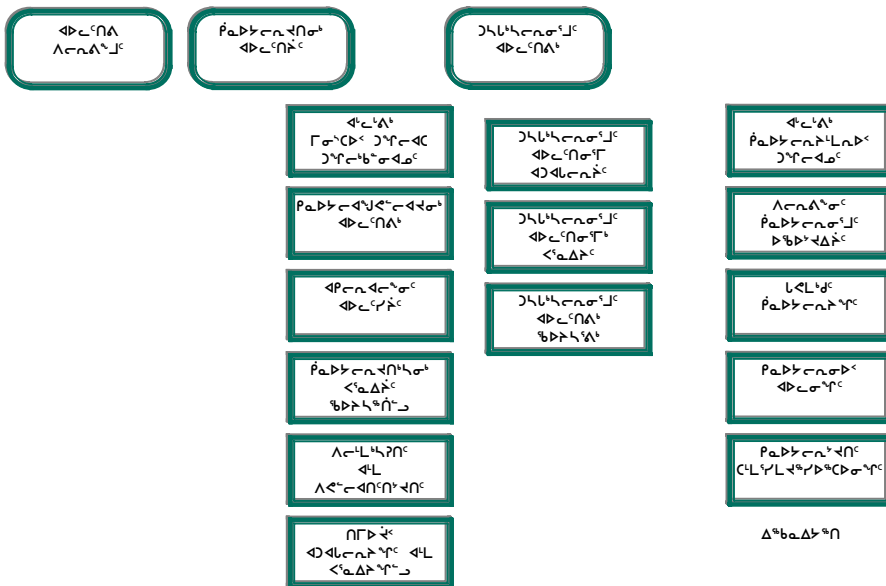
የግብርና ስራ ስርዓት
ግብርና ስራ ስርዓት

የግብርና ስራ ስርዓት
ግብርና ስራ ስርዓት

የግብርና ስራ ስርዓት
ግብርና ስራ ስርዓት

የግብርና ስራ ስርዓት
ግብርና ስራ ስርዓት

የግብርና ስራ ስርዓት ደንብ



Kelvin Ng
Minister

የግንባታ አገልግሎት ገቢዎች ሪፖርት

የግንባታ አገልግሎት ገቢዎች ሪፖርት ይኸውን ማህተም ለማስፈጸም ለማድረግ የግንባታ አገልግሎት ገቢዎች ሪፖርት አገልግሎት ለሰጠው ሰው የሚሰጠው ገንዘብ ነው። የግንባታ አገልግሎት ገቢዎች ሪፖርት የሚሰጠው ሰው የሚሰጠው ገንዘብ ነው። የግንባታ አገልግሎት ገቢዎች ሪፖርት የሚሰጠው ሰው የሚሰጠው ገንዘብ ነው። የግንባታ አገልግሎት ገቢዎች ሪፖርት የሚሰጠው ሰው የሚሰጠው ገንዘብ ነው።

ᐱᓂᓂᓄᓐ ᐱᓂᓂᓄᓐ ᐱᓂᓂᓄᓐ
CENTRALLY ADMINISTERED FUNDS

	ᐱᓂᓂᓄᓐ ᐱᓂᓂᓄᓐ 2003-2004 Main Estimates (\$000)	ᐱᓂᓂᓄᓐ ᐱᓂᓂᓄᓐ ᐱᓂᓂᓄᓐ ᐱᓂᓂᓄᓐ (\$000)	ᐱᓂᓂᓄᓐ ᐱᓂᓂᓄᓐ (\$000)
ᐱᓂᓂᓄᓐ ᐱᓂᓂᓄᓐ ᐱᓂᓂᓄᓐ Grants and Contributions			
ᐱᓂᓂᓄᓐ Contributions			
ᐱᓂᓂᓄᓐ ᐱᓂᓂᓄᓐ ᐱᓂᓂᓄᓐ ᐱᓂᓂᓄᓐ ᐱᓂᓂᓄᓐ ᐱᓂᓂᓄᓐ ᐱᓂᓂᓄᓐ	4,750		
Power Subsidy			
ᐱᓂᓂᓄᓐ ᐱᓂᓂᓄᓐ Total Contributions	4,750	4,750	4,750
ᐱᓂᓂᓄᓐ ᐱᓂᓂᓄᓐ ᐱᓂᓂᓄᓐ Total Grants and Contributions	4,750	4,750	4,750

የግብርና ሚኒስቴር
ጋራ ጽ/ቤት

Finance

ᐱᑭᑦᑲᑦᑲᑦᑲᑦ ᐱᑭᑦᑲᑦᑲᑦᑲᑦ ᐱᑭᑦᑲᑦᑲᑦᑲᑦᑲᑦᑲᑦ ᐱᑭᑦᑲᑦᑲᑦᑲᑦ
DISTRIBUTION OF OPERATIONS AND MAINTENANCE BUDGET

	ᐱᑭᑦᑲᑦᑲᑦᑲᑦ Headquarters (\$000)	ᐱᑭᑦᑲᑦᑲᑦᑲᑦ Qikiqtaaluk (\$000)	ᐱᑭᑦᑲᑦᑲᑦᑲᑦ Kivalliq (\$000)	ᐱᑭᑦᑲᑦᑲᑦᑲᑦ Kitikmeot (\$000)	ᐱᑭᑦᑲᑦᑲᑦᑲᑦ Total (\$000)
ᐱᑭᑦᑲᑦᑲᑦᑲᑦᑲᑦ ᐱᑭᑦᑲᑦᑲᑦᑲᑦ ᐱᑭᑦᑲᑦᑲᑦᑲᑦ					18,861
ᐱᑭᑦᑲᑦᑲᑦᑲᑦᑲᑦ ᐱᑭᑦᑲᑦᑲᑦᑲᑦ		-	-		4,750
ᐱᑭᑦᑲᑦᑲᑦᑲᑦᑲᑦ ᐱᑭᑦᑲᑦᑲᑦᑲᑦ					905
ᐱᑭᑦᑲᑦᑲᑦᑲᑦᑲᑦ ᐱᑭᑦᑲᑦᑲᑦᑲᑦ					410
ᐱᑭᑦᑲᑦᑲᑦᑲᑦᑲᑦ ᐱᑭᑦᑲᑦᑲᑦᑲᑦ			-		250
ᐱᑭᑦᑲᑦᑲᑦᑲᑦᑲᑦ	-	-	-	-	-
ᐱᑭᑦᑲᑦᑲᑦᑲᑦᑲᑦ ᐱᑭᑦᑲᑦᑲᑦᑲᑦ					10,643
ᐱᑭᑦᑲᑦᑲᑦᑲᑦᑲᑦ ᐱᑭᑦᑲᑦᑲᑦᑲᑦᑲᑦ					8,141
ᐱᑭᑦᑲᑦᑲᑦᑲᑦᑲᑦ ᐱᑭᑦᑲᑦᑲᑦᑲᑦ					545
ᐱᑭᑦᑲᑦᑲᑦᑲᑦᑲᑦ ᐱᑭᑦᑲᑦᑲᑦᑲᑦ ᐱᑭᑦᑲᑦᑲᑦᑲᑦᑲᑦᑲᑦ	40,302	1,645	1,407	1,151	44,505
Total Operations & Maintenance					

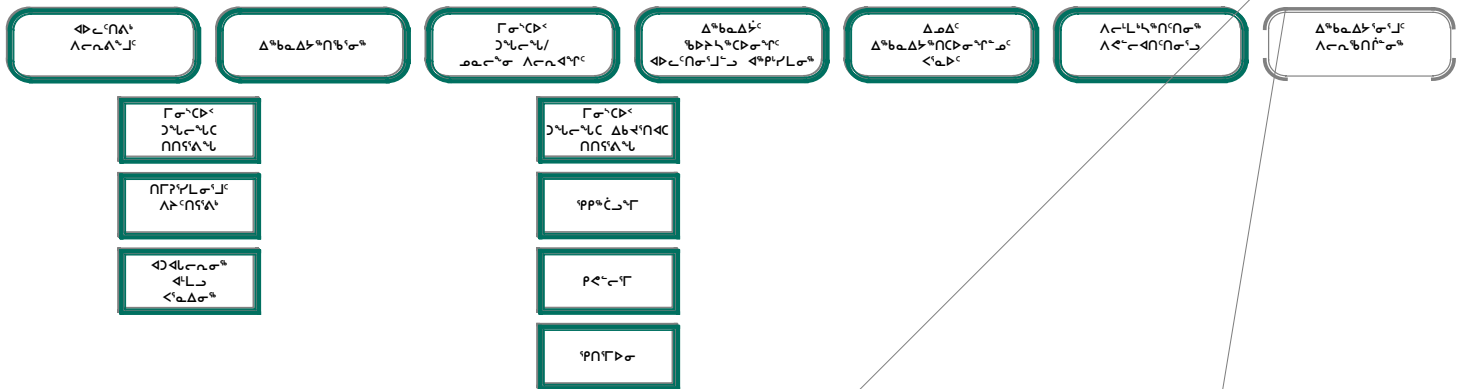


ለር ዋረዳ
 ገምገማ

ስራ ርዕይ
 ገምገማ ጋራ

ስራ ርዕይ
 ገምገማ ጋራ ልዩ ልዩ

የሰው ሀብት ልማትና ሥራ አፈጻጸም

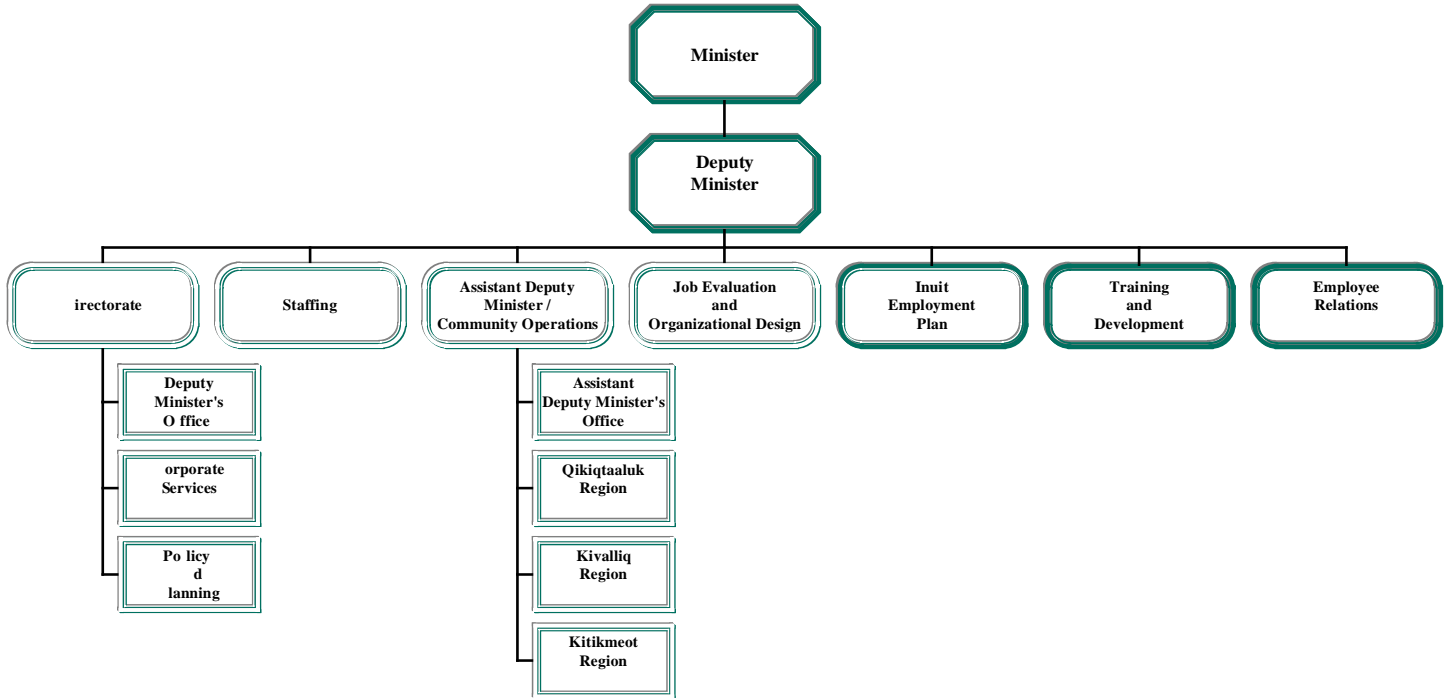


Peter Kilabuk
Minister

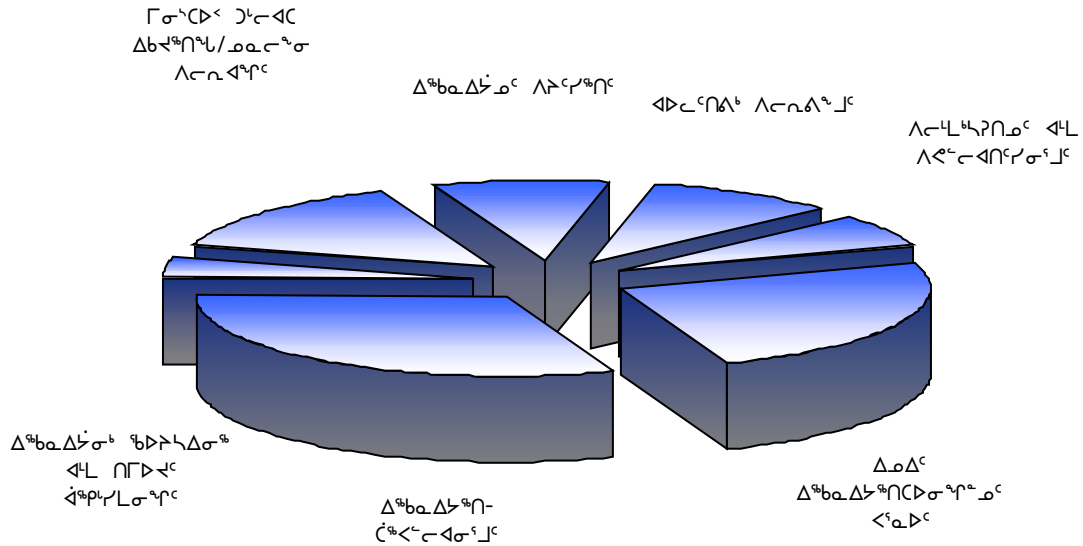
Carmen Levi
Deputy Minister

Tom Thompson
Assistant Deputy Minister

ACCOUNTING STRUCTURE CHART



ᐃᖅᑲᓄᐃᑦᖅᑎᑦᑎᑦ ᐃᑎᑦᑎᑦᑎᑦ
DETAIL OF EXPENDITURES



ᑎᑎᑦᑎᑦᑎᑦ	DESCRIPTION	ᑎᑎᑦᑎᑦᑎᑦ	ᐃᖅᑲᓄᐃᑦᖅᑎᑦᑎᑦ	ᑎᑎᑦᑎᑦᑎᑦ
		ᐃᖅᑲᓄᐃᑦᖅᑎᑦᑎᑦ	ᐃᖅᑲᓄᐃᑦᖅᑎᑦᑎᑦ	ᐃᖅᑲᓄᐃᑦᖅᑎᑦᑎᑦ
		2003-2004	Main	Estimates
		(\$000)	(\$000)	(\$000)
ᐃᖅᑲᓄᐃᑦᖅᑎᑦᑎᑦ ᐃᑎᑦᑎᑦᑎᑦ ᐃᑎᑦᑎᑦᑎᑦ		8,620		
ᑎᑎᑦᑎᑦᑎᑦ ᐃᑎᑦᑎᑦᑎᑦ		350		
ᓄᐃᑎᑦᑎᑦ ᐃᖅᑲᓄᐃᑦᖅᑎᑦᑎᑦ		2,659		
ᐃᑎᑦᑎᑦᑎᑦ ᐃᑎᑦᑎᑦᑎᑦ		460		
ᓄᐃᑎᑦᑎᑦ ᐃᑎᑦᑎᑦᑎᑦ		3,546		
ᐃᑎᑦᑎᑦᑎᑦ		-		
ᐃᑎᑦᑎᑦᑎᑦ ᐃᑎᑦᑎᑦᑎᑦ		2,824		
ᐃᑎᑦᑎᑦᑎᑦ ᐃᑎᑦᑎᑦᑎᑦ		352		
ᐃᑎᑦᑎᑦᑎᑦ ᐃᑎᑦᑎᑦᑎᑦ		547		
ᐃᑎᑦᑎᑦᑎᑦ ᐃᑎᑦᑎᑦᑎᑦ ᐃᑎᑦᑎᑦᑎᑦ	Total Operations & Maintenance	19,358	19,958	19,958
ᐃᑎᑦᑎᑦᑎᑦ ᐃᑎᑦᑎᑦᑎᑦ	Total Capital	-	150	-
ᐃᑎᑦᑎᑦᑎᑦ ᐃᑎᑦᑎᑦᑎᑦ	Total Expenditures	19,358	20,108	19,958

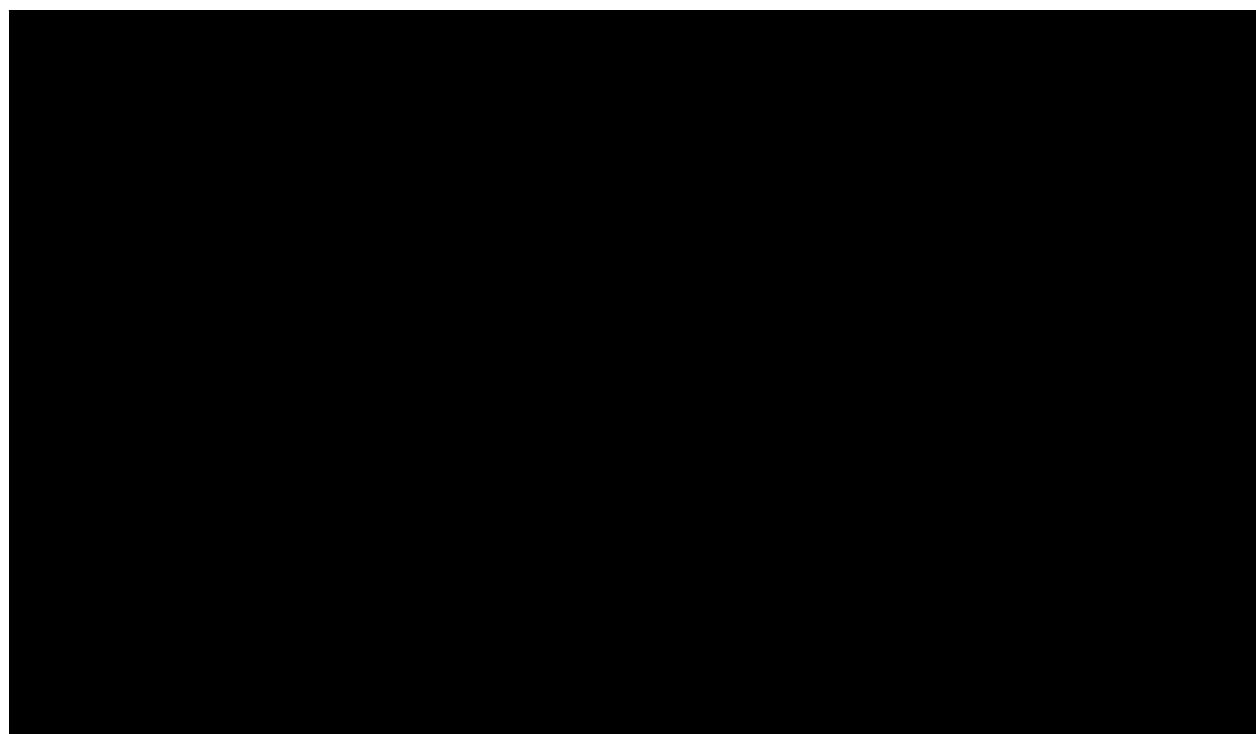
ᐃᑦᑎᑦᑎᐱᑦᑎᐱᑦ ᐃᑦᑎᑦᑎᐱᑦ ᐃᑦᑎᑦᑎᐱᑦᑎᐱᑦ ᐃᑦᑎᑦᑎᑦ
DISTRIBUTION OF OPERATIONS & MAINTENANCE BUDGET

ᐃᑦᑎᑦᑎᐱᑦᑎᐱᑦ	ᐃᑦᑎᑦᑎᐱᑦ	ᐃᑦᑎᑦᑎᐱᑦ	ᐃᑦᑎᑦᑎᐱᑦ	ᐃᑦᑎᑦᑎᐱᑦ
Headquarters	Qikiqtaaluk	Kivalliq	Kitikmeot	Total
(\$000)	(\$000)	(\$000)	(\$000)	(\$000)

ᐃᑦᑎᑦᑎᐱᑦᑎᐱᑦ ᐃᑦᑎᑦᑎᐱᑦ ᐃᑦᑎᑦᑎᐱᑦ

ᐃᑦᑎᑦᑎᐱᑦ ᐃᑦᑎᑦᑎᐱᑦ

ᐃᑦᑎᑦᑎᐱᑦᑎᐱᑦ ᐃᑦᑎᑦᑎᐱᑦ ᐃᑦᑎᑦᑎᐱᑦ ᐃᑦᑎᑦᑎᐱᑦ ᐃᑦᑎᑦᑎᐱᑦ ᐃᑦᑎᑦᑎᐱᑦ ᐃᑦᑎᑦᑎᐱᑦ ᐃᑦᑎᑦᑎᐱᑦ ᐃᑦᑎᑦᑎᐱᑦ ᐃᑦᑎᑦᑎᐱᑦ ᐃᑦᑎᑦᑎᐱᑦ ᐃᑦᑎᑦᑎᐱᑦ ᐃᑦᑎᑦᑎᐱᑦ ᐃᑦᑎᑦᑎᐱᑦ



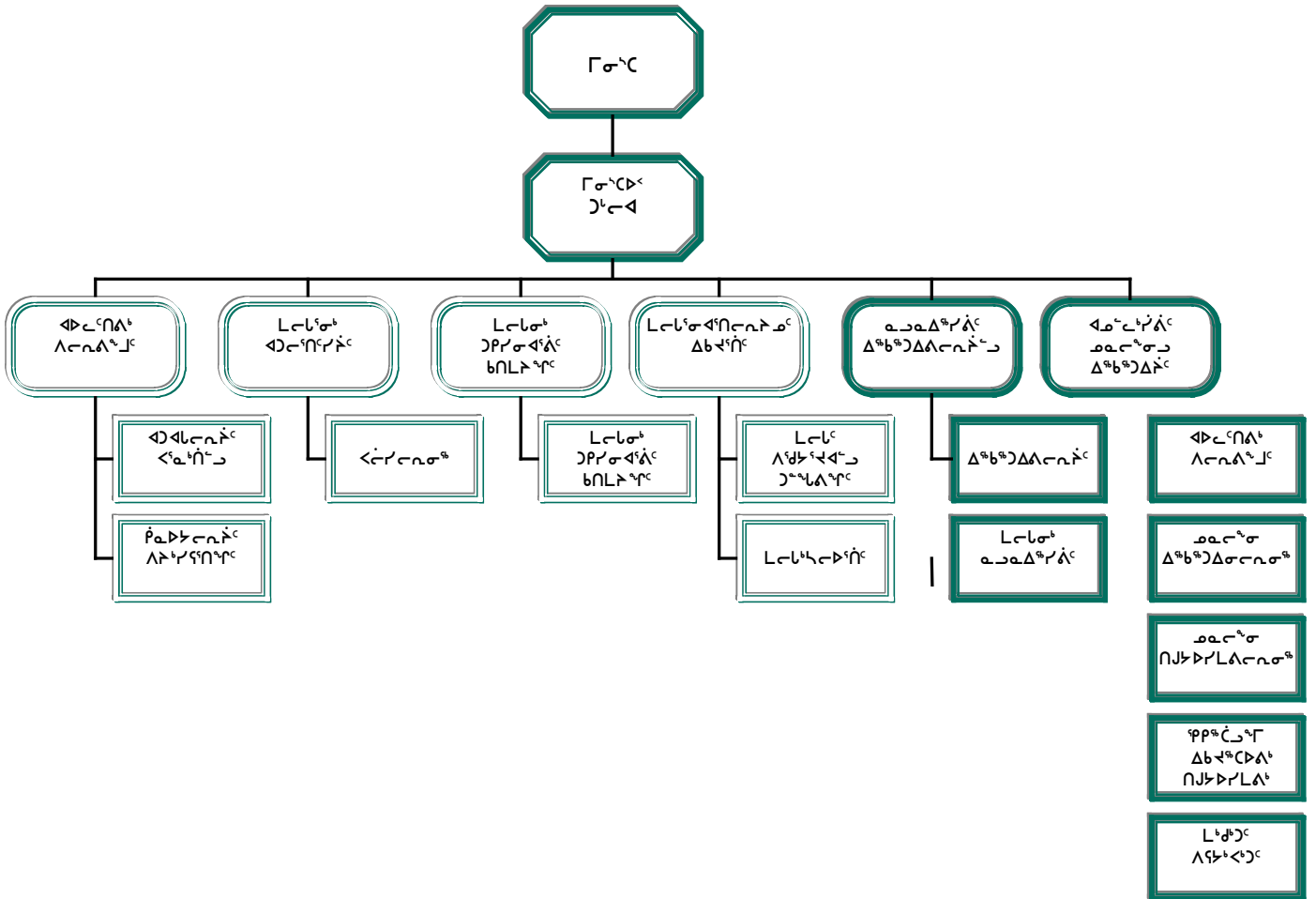


ለግብርና ስርዓት
 ስርዓት

ለግብርና ስርዓት
 ስርዓት

ለግብርና ስርዓት
 ስርዓት

የግብርና ስርዓት ማረጋገጫ

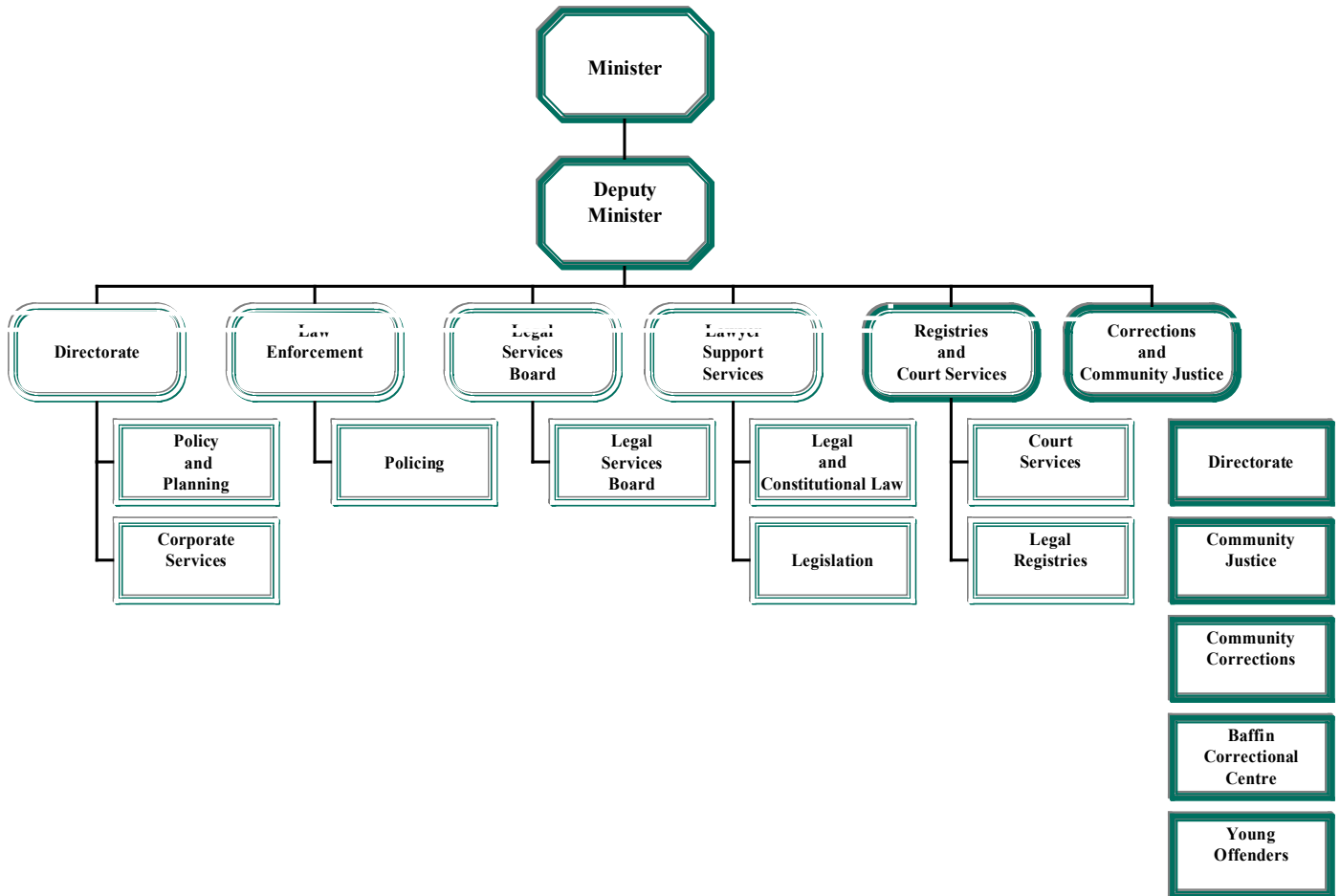


Paul Okalik
Minister

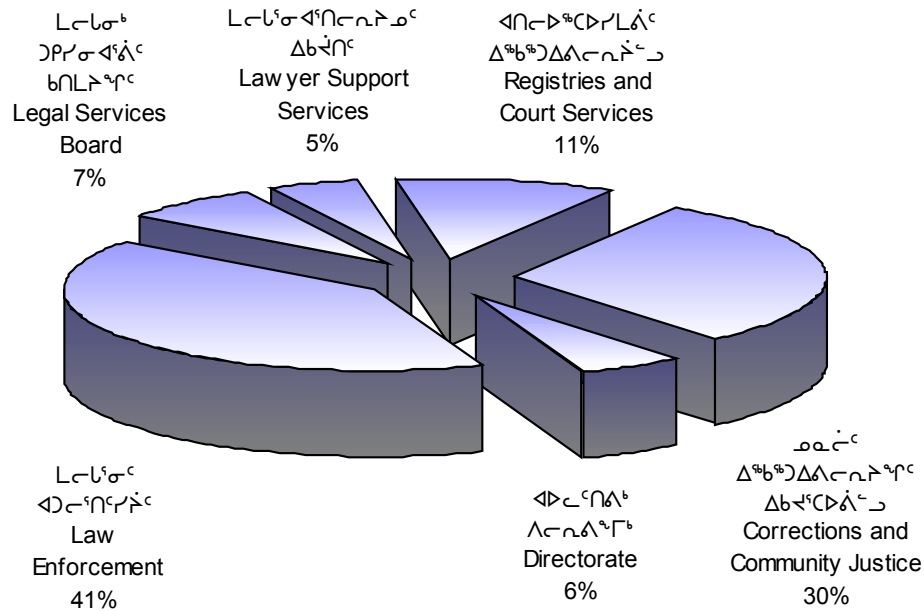
Nora Sanders
Deputy Minister

Simon Awa
Assistant Deputy Minister

ACCOUNTING STRUCTURE CHART



ᑭᑦᑎᑦᑯᑦᑭᑦᑯᑦ ᑕᑦᑎᑦᑯᑦ
DETAIL OF EXPENDITURES



ᑕᑦᑎᑦᑯᑦᑭᑦᑯᑦ	ᑕᑦᑎᑦᑯᑦᑭᑦᑯᑦ	ᑕᑦᑎᑦᑯᑦᑭᑦᑯᑦ	ᑕᑦᑎᑦᑯᑦᑭᑦᑯᑦ
ᑕᑦᑎᑦᑯᑦᑭᑦᑯᑦ	ᑕᑦᑎᑦᑯᑦᑭᑦᑯᑦ	ᑕᑦᑎᑦᑯᑦᑭᑦᑯᑦ	ᑕᑦᑎᑦᑯᑦᑭᑦᑯᑦ
ᑕᑦᑎᑦᑯᑦᑭᑦᑯᑦ	ᑕᑦᑎᑦᑯᑦᑭᑦᑯᑦ	ᑕᑦᑎᑦᑯᑦᑭᑦᑯᑦ	ᑕᑦᑎᑦᑯᑦᑭᑦᑯᑦ
ᑕᑦᑎᑦᑯᑦᑭᑦᑯᑦ	ᑕᑦᑎᑦᑯᑦᑭᑦᑯᑦ	ᑕᑦᑎᑦᑯᑦᑭᑦᑯᑦ	ᑕᑦᑎᑦᑯᑦᑭᑦᑯᑦ
ᑕᑦᑎᑦᑯᑦᑭᑦᑯᑦ	ᑕᑦᑎᑦᑯᑦᑭᑦᑯᑦ	ᑕᑦᑎᑦᑯᑦᑭᑦᑯᑦ	ᑕᑦᑎᑦᑯᑦᑭᑦᑯᑦ
ᑕᑦᑎᑦᑯᑦᑭᑦᑯᑦ ᑕᑦᑎᑦᑯᑦᑭᑦᑯᑦ ᑕᑦᑎᑦᑯᑦᑭᑦᑯᑦ	Compensation and Benefits	16,154	15,940
ᑕᑦᑎᑦᑯᑦᑭᑦᑯᑦ ᑕᑦᑎᑦᑯᑦᑭᑦᑯᑦ ᑕᑦᑎᑦᑯᑦᑭᑦᑯᑦ	Grants and Contributions	1,897	1,945
ᑕᑦᑎᑦᑯᑦᑭᑦᑯᑦ ᑕᑦᑎᑦᑯᑦᑭᑦᑯᑦ ᑕᑦᑎᑦᑯᑦᑭᑦᑯᑦ	Travel and Transportation	2,381	2,382
ᑕᑦᑎᑦᑯᑦᑭᑦᑯᑦ ᑕᑦᑎᑦᑯᑦᑭᑦᑯᑦ ᑕᑦᑎᑦᑯᑦᑭᑦᑯᑦ	Materials and Supplies	1,241	1,216
ᑕᑦᑎᑦᑯᑦᑭᑦᑯᑦ ᑕᑦᑎᑦᑯᑦᑭᑦᑯᑦ ᑕᑦᑎᑦᑯᑦᑭᑦᑯᑦ	Purchased Services	302	308
ᑕᑦᑎᑦᑯᑦᑭᑦᑯᑦ ᑕᑦᑎᑦᑯᑦᑭᑦᑯᑦ ᑕᑦᑎᑦᑯᑦᑭᑦᑯᑦ	Utilities	-	-
ᑕᑦᑎᑦᑯᑦᑭᑦᑯᑦ ᑕᑦᑎᑦᑯᑦᑭᑦᑯᑦ ᑕᑦᑎᑦᑯᑦᑭᑦᑯᑦ	Contract Services	22,565	20,822
ᑕᑦᑎᑦᑯᑦᑭᑦᑯᑦ ᑕᑦᑎᑦᑯᑦᑭᑦᑯᑦ ᑕᑦᑎᑦᑯᑦᑭᑦᑯᑦ	Fees and Payments	1,258	1,303
ᑕᑦᑎᑦᑯᑦᑭᑦᑯᑦ ᑕᑦᑎᑦᑯᑦᑭᑦᑯᑦ ᑕᑦᑎᑦᑯᑦᑭᑦᑯᑦ	Other Expenses	260	283
ᑕᑦᑎᑦᑯᑦᑭᑦᑯᑦ ᑕᑦᑎᑦᑯᑦᑭᑦᑯᑦ ᑕᑦᑎᑦᑯᑦᑭᑦᑯᑦ	Total Operations & Maintenance	46,058	44,199
ᑕᑦᑎᑦᑯᑦᑭᑦᑯᑦ ᑕᑦᑎᑦᑯᑦᑭᑦᑯᑦ ᑕᑦᑎᑦᑯᑦᑭᑦᑯᑦ	Total Capital	1,560	720
ᑕᑦᑎᑦᑯᑦᑭᑦᑯᑦ ᑕᑦᑎᑦᑯᑦᑭᑦᑯᑦ ᑕᑦᑎᑦᑯᑦᑭᑦᑯᑦ	Total Expenditures	47,618	44,919

ወጪ ስራ ልማት አገልግሎት ለጊዜ ልዩ ስራ

ወጪ ስራ ልማት አገልግሎት ለጊዜ ልዩ ስራ ለማድረግ ይህን ዓይነት ስራዎችን ያስፈልጋል። ወጪ ስራ ልማት አገልግሎት ለጊዜ ልዩ ስራ ለማድረግ በህዝብ ልምድ ዲጂታይዥን ስራዎች ላይ ጥቅም ላይ የዋለውን ስራ ለማድረግ ይህን ዓይነት ስራዎችን ያስፈልጋል። ወጪ ስራ ልማት አገልግሎት ለጊዜ ልዩ ስራ ለማድረግ በህዝብ ልምድ ዲጂታይዥን ስራዎች ላይ ጥቅም ላይ የዋለውን ስራ ለማድረግ ይህን ዓይነት ስራዎችን ያስፈልጋል።

CORRECTIONS AND COMMUNITY JUSTICE

Corrections and Community Justice administer programs that include adult and young offender institutions, Community Corrections and the Community Justice Programs. Corrections oversees the adult and young offenders facilities, including on-the-land camp operations and open-custody homes. Community Justice has the responsibility to provide community justice development, including the promotion and establishment of programs to prevent crime within the communities. The Community Corrections Program supervises offenders placed on probation or released from institutions on parole. This section is also responsible for assisting in the development of community-based programs such as diversion and public education.

	▶	
የሰው ሀብት	▶	የሰው ሀብት
የግንባታ	▶	የግንባታ
2003-2006	▶	2002-2003
Main	▶	Estima

ᓄᓚᑦᑕᓐ ᓂᓐᓂᓐᓂᓐᓂᓐ ᓂᓐᓂᓐᓂᓐ CORRECTIONS AND COMMUNITY JUSTICE

	ᓂᓐᓂᓐᓂᓐᓂᓐ ᓂᓐᓂᓐᓂᓐᓂᓐ	ᓂᓐᓂᓐᓂᓐᓂᓐ ᓂᓐᓂᓐᓂᓐᓂᓐ	ᓂᓐᓂᓐᓂᓐᓂᓐ ᓂᓐᓂᓐᓂᓐᓂᓐ
	2003-2004 Main Estimates (\$000)	2002-2003 Revised Estimates (\$000)	2002-2003 Main Estimates (\$000)
ᓂᓐᓂᓐᓂᓐᓂᓐ ᓂᓐᓂᓐᓂᓐᓂᓐ Grants and Contributions			
ᓂᓐᓂᓐᓂᓐᓂᓐ Contributions			
ᓂᓐᓂᓐᓂᓐᓂᓐ ᓂᓐᓂᓐᓂᓐᓂᓐ ᓂᓐᓂᓐᓂᓐᓂᓐ ᓂᓐᓂᓐᓂᓐᓂᓐ ᓂᓐᓂᓐᓂᓐᓂᓐ ᓂᓐᓂᓐᓂᓐᓂᓐ ᓂᓐᓂᓐᓂᓐᓂᓐ ᓂᓐᓂᓐᓂᓐᓂᓐ ᓂᓐᓂᓐᓂᓐᓂᓐ ᓂᓐᓂᓐᓂᓐᓂᓐ ᓂᓐᓂᓐᓂᓐᓂᓐ ᓂᓐᓂᓐᓂᓐᓂᓐ ᓂᓐᓂᓐᓂᓐᓂᓐ ᓂᓐᓂᓐᓂᓐᓂᓐ ᓂᓐᓂᓐᓂᓐᓂᓐ ᓂᓐᓂᓐᓂᓐᓂᓐ ᓂᓐᓂᓐᓂᓐᓂᓐ ᓂᓐᓂᓐᓂᓐᓂᓐ ᓂᓐᓂᓐᓂᓐᓂᓐ ᓂᓐᓂᓐᓂᓐᓂᓐ			
	680	630	630
Contributions for Community Justice Initiatives			
Contributions are provided for community justice projects that promote and encourage the participation of communities in the justice system and the development and implementation of community-based alternatives to the formal justice system.			
ᓂᓐᓂᓐᓂᓐᓂᓐ ᓂᓐᓂᓐᓂᓐᓂᓐ Total Contributions	680	630	630
ᓂᓐᓂᓐᓂᓐᓂᓐ ᓂᓐᓂᓐᓂᓐᓂᓐ ᓂᓐᓂᓐᓂᓐᓂᓐ Total Grants and Contributions	680	630	630

ᑲᑦᑲᑦᑲᑦᑲᑦᑲᑦᑲᑦ ᑲᑦᑲᑦᑲᑦᑲᑦᑲᑦᑲᑦᑲᑦ ᑲᑦᑲᑦᑲᑦᑲᑦᑲᑦ
DETAIL OF WORK PERFORMED ON BEHALF OF THIRD PARTIES

	ᑲᑦᑲᑦᑲᑦᑲᑦᑲᑦ ᑲᑦᑲᑦᑲᑦᑲᑦᑲᑦᑲᑦ 2003-2004 Main Estimates (\$000)	ᑲᑦᑲᑦᑲᑦᑲᑦᑲᑦᑲᑦ ᑲᑦᑲᑦᑲᑦᑲᑦᑲᑦᑲᑦ 2002-2003 Revised Estimates (\$000)	ᑲᑦᑲᑦᑲᑦᑲᑦᑲᑦᑲᑦ ᑲᑦᑲᑦᑲᑦᑲᑦᑲᑦᑲᑦ 2002-2003 Main Estimates (\$000)
ᑲᑦᑲᑦᑲᑦᑲᑦᑲᑦᑲᑦ ᑲᑦᑲᑦᑲᑦᑲᑦᑲᑦᑲᑦ			
ᑲᑦᑲᑦᑲᑦᑲᑦᑲᑦᑲᑦᑲᑦ ᑲᑦᑲᑦᑲᑦᑲᑦᑲᑦᑲᑦᑲᑦ ᑲᑦᑲᑦᑲᑦᑲᑦᑲᑦᑲᑦᑲᑦ ᑲᑦᑲᑦᑲᑦᑲᑦᑲᑦᑲᑦᑲᑦ ᑲᑦᑲᑦᑲᑦᑲᑦᑲᑦᑲᑦᑲᑦ ᑲᑦᑲᑦᑲᑦᑲᑦᑲᑦᑲᑦᑲᑦ ᑲᑦᑲᑦᑲᑦᑲᑦᑲᑦᑲᑦᑲᑦ ᑲᑦᑲᑦᑲᑦᑲᑦᑲᑦᑲᑦᑲᑦ ᑲᑦᑲᑦᑲᑦᑲᑦᑲᑦᑲᑦᑲᑦ ᑲᑦᑲᑦᑲᑦᑲᑦᑲᑦᑲᑦᑲᑦ.	300	300	300

Inuit Policing Agreement

Funding is used to encourage and promote Inuit policing in order to meet the cultural needs and public safety concerns of communities in Nunavut.

ᑲᑦᑲᑦᑲᑦᑲᑦᑲᑦᑲᑦ ᑲᑦᑲᑦᑲᑦᑲᑦᑲᑦᑲᑦ

ᑲᑦᑲᑦᑲᑦᑲᑦᑲᑦᑲᑦᑲᑦ ᑲᑦᑲᑦᑲᑦᑲᑦᑲᑦᑲᑦᑲᑦ ᑲᑦᑲᑦᑲᑦᑲᑦᑲᑦᑲᑦᑲᑦ ᑲᑦᑲᑦᑲᑦᑲᑦᑲᑦᑲᑦᑲᑦ ᑲᑦᑲᑦᑲᑦᑲᑦᑲᑦᑲᑦᑲᑦ ᑲᑦᑲᑦᑲᑦᑲᑦᑲᑦᑲᑦᑲᑦ ᑲᑦᑲᑦᑲᑦᑲᑦᑲᑦᑲᑦᑲᑦ ᑲᑦᑲᑦᑲᑦᑲᑦᑲᑦᑲᑦᑲᑦ ᑲᑦᑲᑦᑲᑦᑲᑦᑲᑦᑲᑦᑲᑦ.

-	115	115
---	-----	-----

Community Constable Agreement

Funding is used to establish a Nunavut Community Constable Program (NCCP) and to cover the costs for implementing and operating the NCCP.

ᑲᑦᑲᑦᑲᑦᑲᑦᑲᑦᑲᑦᑲᑦ ᑲᑦᑲᑦᑲᑦᑲᑦᑲᑦᑲᑦᑲᑦ ᑲᑦᑲᑦᑲᑦᑲᑦᑲᑦᑲᑦᑲᑦ ᑲᑦᑲᑦᑲᑦᑲᑦᑲᑦᑲᑦᑲᑦ ᑲᑦᑲᑦᑲᑦᑲᑦᑲᑦᑲᑦᑲᑦ ᑲᑦᑲᑦᑲᑦᑲᑦᑲᑦᑲᑦᑲᑦ ᑲᑦᑲᑦᑲᑦᑲᑦᑲᑦᑲᑦᑲᑦ.

ԼԵԵՆԻՆԻՍՏ

Justice

ፊደራል ፖሊስ ሰራተኛ ለሌሎች ስራዎች ላይ የተከናወነው ስራ
DETAIL OF WORK PERFORMED ON BEHALF OF THIRD PARTIES





ᑭᓂᑦᑕᑦᑕᑦᑕᑦ
ᑭᓂᑦᑕᑦᑕᑦᑕᑦ



PUBLIC WORKS
AND SERVICES

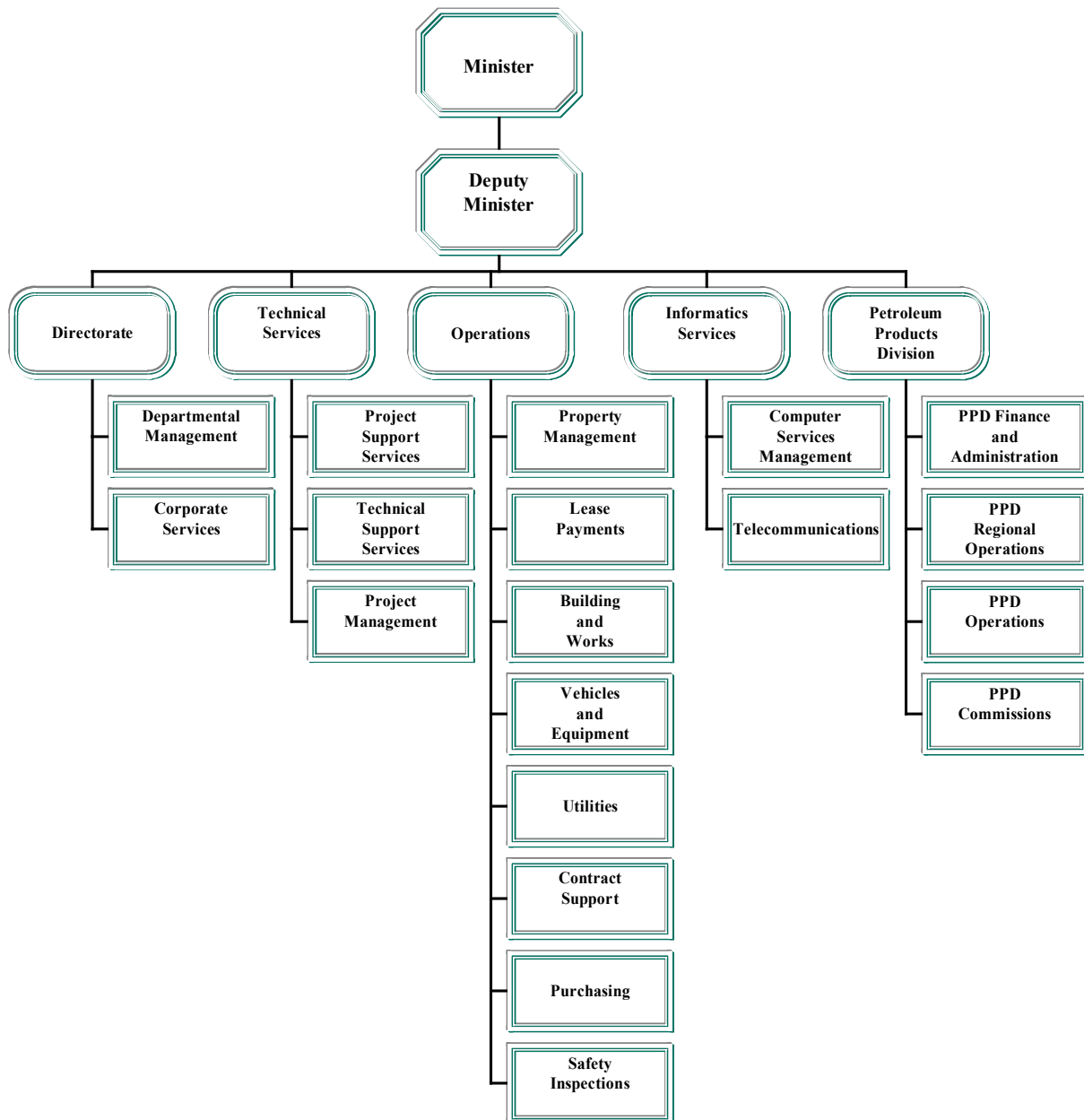
Peter Kattuk
 Minister

Robert Gunn
 Assistant Deputy Minister

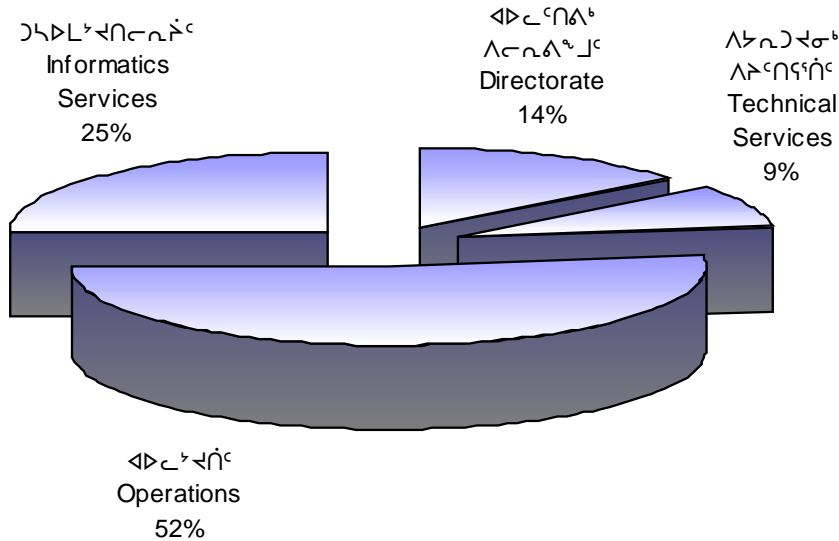
Ross Mrazek
 Deputy Minister

Jamie Flaherty
 Assistant Deputy Minister

ACCOUNTING STRUCTURE CHART



ᑕᑦᑕᑦᑕᑦ ᑕᑦᑕᑦᑕᑦ
DETAIL OF EXPENDITURES



ᑕᑦᑕᑦᑕᑦ	DESCRIPTION	ᑕᑦᑕᑦᑕᑦ ᑕᑦᑕᑦᑕᑦ 2003-2004 Main Estimates (\$000)	ᑕᑦᑕᑦᑕᑦ ᑕᑦᑕᑦᑕᑦ 2002-2003 Revised Estimates (\$000)	ᑕᑦᑕᑦᑕᑦ ᑕᑦᑕᑦᑕᑦ 2002-2003 Main Estimates (\$000)
ᑕᑦᑕᑦᑕᑦ ᑕᑦᑕᑦᑕᑦ ᑕᑦᑕᑦᑕᑦ	Compensation and Benefits	17,463	17,006	17,206
ᑕᑦᑕᑦᑕᑦ ᑕᑦᑕᑦᑕᑦ	Grants and Contributions	-	-	-
ᑕᑦᑕᑦᑕᑦ ᑕᑦᑕᑦᑕᑦ	Travel and Transportation	1,485	1,849	1,849
ᑕᑦᑕᑦᑕᑦ ᑕᑦᑕᑦᑕᑦ	Materials and Supplies	1,565	1,973	1,973
ᑕᑦᑕᑦᑕᑦ ᑕᑦᑕᑦᑕᑦ	Purchased Services	7,089	7,433	7,433
ᑕᑦᑕᑦᑕᑦ	Utilities	6,304	6,304	6,304
	Contract Services		21,386	20,769
ᑕᑦᑕᑦᑕᑦ ᑕᑦᑕᑦᑕᑦ	Fees and Payments	479	424	424
ᑕᑦᑕᑦᑕᑦ ᑕᑦᑕᑦᑕᑦ	Other Expenses	5,418	2,962	2,962
ᑕᑦᑕᑦᑕᑦ ᑕᑦᑕᑦᑕᑦ ᑕᑦᑕᑦᑕᑦ	Total Operations & Maintenance	60,939	59,337	58,920
ᑕᑦᑕᑦᑕᑦ ᑕᑦᑕᑦᑕᑦ	Total Capital	10,680	10,551	6,320
ᑕᑦᑕᑦᑕᑦ ᑕᑦᑕᑦᑕᑦ	Total Expenditures	71,619	69,888	65,240

የገንዘብ ሪፖርት

የገንዘብ ሪፖርት ለፊት ገጽ ላይ ተገልጿል። ለተጨማሪ መረጃ ለፊት ገጽ ላይ ይገኛል። ለፊት ገጽ ላይ ይገኛል። ለፊት ገጽ ላይ ይገኛል።

ᑦᓂᓐᑕᑦᑕᓄᑦ ᐱᓂᓂᓐᑕᓄᑦ

ᑕᓄᑕᑦᑕᑦᑕᓄᑦ ᑲᓂᑦᑕᑦᑕᓄᑦ ᓄᑦᑕᓄᑦᑕᑦᑕᓄᑦ, ᑦᓂᓂᓐᑕᓄᑦᑕᑦᑕᓄᑦ, ᑦᓂᑕᑦᑕᓄᑦᑕᑦᑕᓄᑦ ᑕᓄᑕᓄᑦᑕᑦᑕᓄᑦ ᑦᓂᓐᑕᑦᑕᓄᑦ ᓄᓄᓄᑦᑕᓄᑦ ᓄᓄᓄᑦᑕᓄᑦ ᑦᓂᓐᑕᑦᑕᓄᑦᑕᑦᑕᓄᑦ ᓄᓄᓄᑦᑕᓄᑦ ᐱᓂᓂᓐᑕᓄᑦ. ᑦᓂᓐᑕᑦᑕᓄᑦᑕᑦᑕᓄᑦ ᑦᓂᑕᑦᑕᓄᑦᑕᑦᑕᓄᑦ ᑕᓄᑕᓄᑦᑕᑦᑕᓄᑦ ᓄᓄᓄᑦᑕᓄᑦ, ᑕᓄᑕᓄᑦᑕᑦᑕᓄᑦ ᑕᓄᑕᓄᑦᑕᑦᑕᓄᑦ ᑕᓄᑕᓄᑦᑕᑦᑕᓄᑦ.

PETROLEUM PRODUCTS BRANCH

This Branch acquires, transports, stores and distributes petroleum products to those communities in Nunavut that are not serviced by the private sector. The Branch ensures that petroleum products are stored and distributed in an effective, efficient and environmentally responsible manner.

ᑦᓂᓐᑕᑦᑕᓄᑦ	DESCRIPTION	ᑦᓄᑕᓄᑦ	ᑕᓄᑕᓄᑦᑕᑦᑕᓄᑦ	ᑦᓄᑕᓄᑦ
		ᑕᓄᑕᓄᑦᑕᑦᑕᓄᑦ	ᑕᓄᑕᓄᑦᑕᑦᑕᓄᑦ	ᑕᓄᑕᓄᑦᑕᑦᑕᓄᑦ
		2003-2004	2002-2003	2002-2003
		Main	Revised	Main
		Estimates	Estimates	Estimates
		(\$000)	(\$000)	(\$000)
ᐱᓂᓂᓐᑕᓄᑦᑕᓄᑦ ᑕᓄᑕᓄᑦᑕᑦᑕᓄᑦ ᐱᓂᓂᓐᑕᓄᑦ	Compensation and Benefits	-	-	-
ᑕᓄᑕᓄᑦᑕᑦᑕᓄᑦ ᑕᓄᑕᓄᑦᑕᑦᑕᓄᑦ	Grants and Contributions	-	-	-
ᓄᑦᑕᓄᑦᑕᑦᑕᓄᑦ ᐱᓂᓂᓐᑕᓄᑦ	Travel and Transportation	-	-	-
ᑕᓄᑕᓄᑦᑕᑦᑕᓄᑦ ᑕᓄᑕᓄᑦᑕᑦᑕᓄᑦ	Materials and Supplies	-	-	-
ᓄᑦᑕᓄᑦᑕᑦᑕᓄᑦ ᐱᓂᓂᓐᑕᓄᑦ	Purchased Services	-	-	-
ᑕᓄᑕᓄᑦᑕᑦᑕᓄᑦ	Utilities	-	-	-
ᑕᓄᑕᓄᑦᑕᑦᑕᓄᑦ ᐱᓂᓂᓐᑕᓄᑦ	Contract Services	-	-	-
ᑕᓄᑕᓄᑦᑕᑦᑕᓄᑦ ᑕᓄᑕᓄᑦᑕᑦᑕᓄᑦ	Fees and Payments	-	-	-
ᑕᓄᑕᓄᑦᑕᑦᑕᓄᑦ ᑕᓄᑕᓄᑦᑕᑦᑕᓄᑦ	Other Expenses	-	-	-
ᑕᓄᑕᓄᑦᑕᑦᑕᓄᑦ ᑕᓄᑕᓄᑦᑕᑦᑕᓄᑦ ᑕᓄᑕᓄᑦᑕᑦᑕᓄᑦ	Total Operations & Maintenance	-	-	-
ᑕᓄᑕᓄᑦᑕᑦᑕᓄᑦ ᑕᓄᑕᓄᑦᑕᑦᑕᓄᑦ	Total Capital	9,680	8,077	5,740
ᑕᓄᑕᓄᑦᑕᑦᑕᓄᑦ ᑕᓄᑕᓄᑦᑕᑦᑕᓄᑦ	Total Expenditures	9,680	8,077	5,740

ጥራት ማረጋገጫ

ᐃᑲᑲᑲᑲ ᑲᑲᑲᑲᑲᑲᑲᑲ
ᑲᑲᑲᑲᑲᑲᑲᑲᑲᑲᑲ



COMMUNITY GOVERNMENT
AND TRANSPORTATION

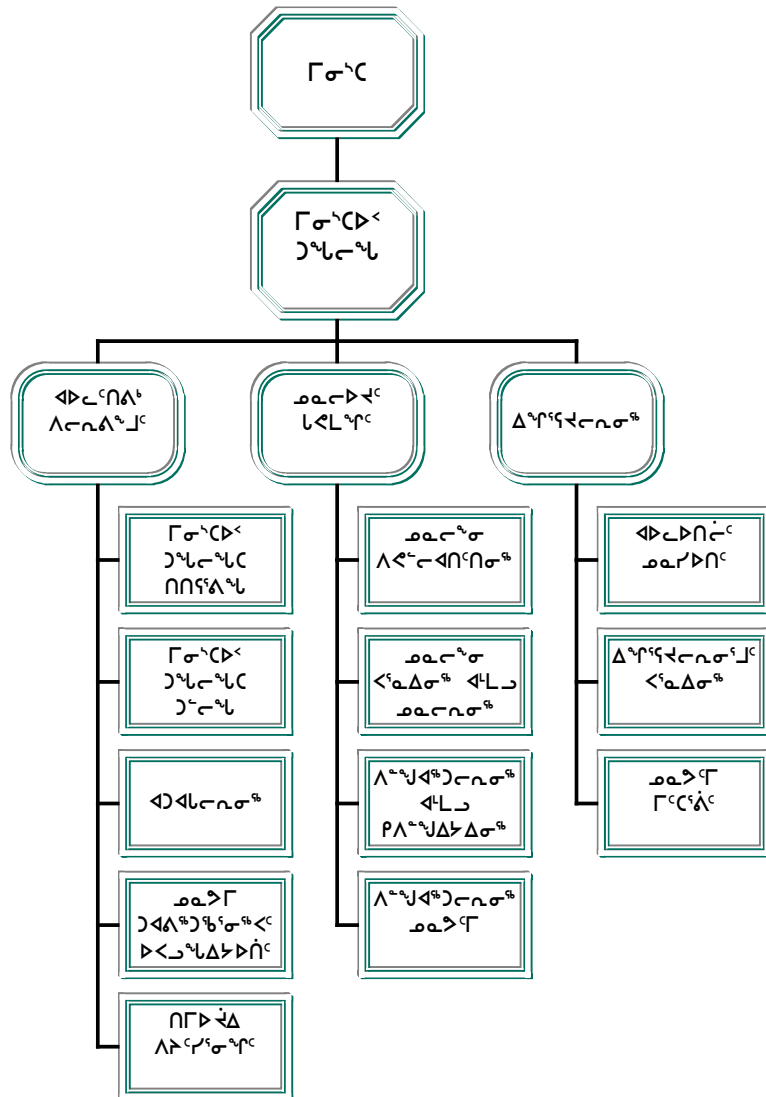
ገንዘብ ሰነድ
 ui {b

ገንዘብ ሰነድ
 ui {bs2 goxb wvJ4tx
 wq3CJoEi 3j 5

ገንዘብ ሰነድ
 ui {bs2 g[ox

ገንዘብ ሰነድ
 ui {bs2 goxb wvJ4tx
 kNo1i 5 Z?moEi 3j 5

ገንዘብ ሰነድ ለገንዘብ ሰነድ



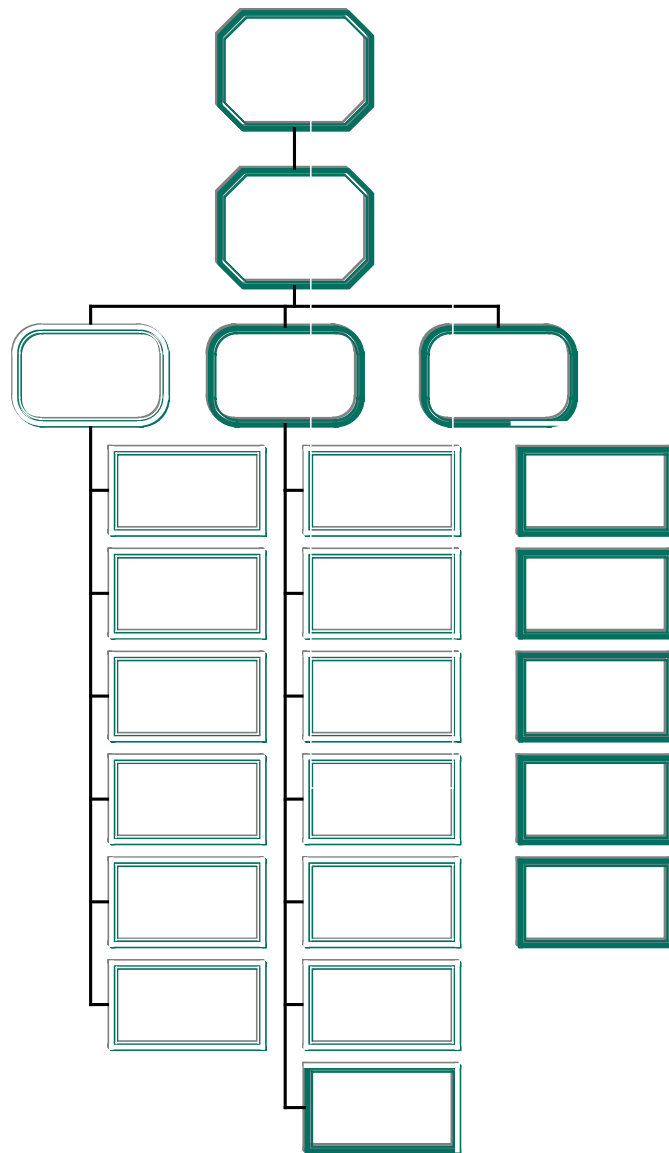
Minister

Assistant Deputy Minister
Transportation

Deputy Minister

Assistant Deputy Minister
Community Government

ACCOUNTING STRUCTURE CHART



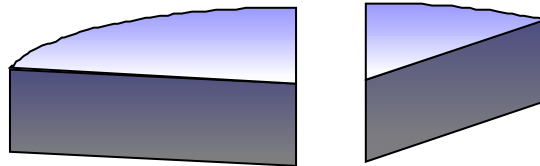
W/4noxaymJ5

WoEctc3l t4 kNosJ5 Z?mq8i 4 x7ml wq3CJoEi 3u4 WoE)=sJi 4 WsyQxDbSA8Nd9l A wky3j z Ji 4 x7ml W?9oxAt4nsJi 9l W/4nsJi 4 w1u4fD8N6yi 3j 5, mrm5txD8Nd9l Q5 kNò.

MISSION

To work in partnership with municipal governments and the transportation sector to enhance social and economic opportunities in self-governing, sustaining communities.

x=4g6ymi q5 xroExp5
DETAIL OF EXPENDITURES



kNo1i Z?msJ5

b4fx kNo1i 5 Z?moEp4f5 WoE}=z 5 b9omsJ4f5 x=4g6ymJ6, xrgJtk5 X3Nwp5, W/4nc6Lt4 WoE}=sJ2 b9omk5 x3CAK5 xrgJtk5 xg6g4ni X3Nstz 8i 4. kNo1i 5 W?9oxJoEpq5 WoExc6S5 wo8i x6t5ti 3u4 kNo1i 5 Z?msJ5 vtmpq8i 4 x7ml w6vNw/6tq8i 9l , cspn3i 3u4 x7ml NI Nw/wi 3u4 kNo1i 5 wq3Ci sJi 4, i s=x4noE?4Lt4 x7ml xSM5t?4Lt4 NMs5bZ4noEi 3u4. X3Nwp4f5 x7m kNoEp4f5 WoE}=z 5 WoExc6S6 wvJ3i 3u4 x7ml rNs/tA5 wvJ3i 3u4 kNò5 kNw5 xg6bsi q8k5 X3Nstq8k5 x7ml vunNs2 kNdtq8i 4. W8ax6goEp4f5 x7ml W8ax3=0Ep4f5 mrmt5t?4S5 W8ax6bsJ4ni 4, W?9oxt5t9l t4 yKo6tsJ8N6yi 3u4 Wo7m4nwAt4ni 4 x7ml xSM5t?4Lt4 W8ax3=1i 5 vmpsJ8N6yi 3j 5 wo8i xDt4ni 5. W8ax6goEp4f5 kNK7u Wp5tCDtc6g5 uxi 6ypsQs4ni 3j 5 NI Nw4fb6b3i 3j 5 Wp5tCDti 4, mrmt5t9l i WsJ4f5 x7ml x6rsm5tx6gu4 wMsc5b6gi 4 srs4f5 xs/4f9l 8i 5 W8ax3i 4nsJi 4. Wz hJk5 x=4g6ymJi x[M|=q5 Wp5tCc5b6g5 kNo1i Z?moEi 3j 5 wq3CJoEi 3j 9l WoE}=xb W/4nE/q8i 4.

COMMUNITY GOVERNMENT

The Community Government Branch has five divisions: Capital Planning, which is responsible for the department's 5 Year Capital Plan. Community Development provides training to community council members and staff, monitors and evaluates municipal operations, deals with consumer issues and administers lottery programs. Planning and Lands provides technical and financial resources to communities for land use planning and Commissioner's land. Sports and Recreation promotes amateur sport, develops leadership skills and administers the Recreation Facilities Operators program. Sports Nunavut offers coaching certificate programs, promotes excellence and organizes Nunavut's participation in winter and summer games. Three Regional offices deliver Community Government and Transportation programs and services

ᐃᑦᑲᑦᑲᑦ	DESCRIPTION	ᐃᑦᑲᑦᑲᑦ ᐃᑦᑲᑦᑲᑦ 2003-2004 Main Estimates (\$000)	x34r0x3ymJ5 x3i i b5 2002-2003 Revised Estimates (\$000)	ᐃᑦᑲᑦᑲᑦ x3i i b5 2002-2003 Main Estimates (\$000)
w6vNw/6tk5 xrosyx5 wvJyx9l	Compensation and Benefits	5,527	5,223	5,223
g8i 6ft5 x7m wvJyx5	Grants and Contributions	39,814	36,473	36,473
i sDc5bDᐅ5 wqCJᐅ9l	Travel and Transportation	1,307	1,877	1,617
x9M}=0E0Jᐅ5 hN4fᐅ9l	Materials and Supplies	156	147	151
i s=6bs9l t4 Wp5yDt5	Purchased Services	105	104	83
ᐅ7m6ftk5	Utilities	-	-	-
ᐅ8gᐅtA5 Wp5yDt5	Contract Services	1,627	1,792	1,589
xroEx05 xro6hw0Jt9l	Fees			9

መድረሻ ስርዓቶችን ለማረጋገጥ
ለሥራዎች ለማስፈጸም

Community Government and Transportation

መድረሻ ስርዓቶችን ለማረጋገጥ
ለሥራ ልማት ይረዳል

*Community Government and Transportation
Bra*

NI Nw6bsi q5 w6vNw/6bsMs6g5 xyu8i 4 r[Z3gw9l t4
DETAIL OF WORK PERFORMED ON BEHALF OF THIRD PARTIES

	ᓄᓄᓄᓄᓄᓄ ᓄᓄᓄᓄᓄᓄ 2003-2004 Main Estimates (\$000)	ᓄᓄᓄᓄᓄᓄᓄᓄᓄᓄ ᓄᓄᓄᓄᓄᓄᓄᓄᓄᓄ 2002-2003 Revised Estimates (\$000)	ᓄᓄᓄᓄᓄᓄᓄ ᓄᓄᓄᓄᓄᓄᓄᓄᓄᓄ 2002-2003 Main Estimates (\$000)
--	---	--	--

ᓄᓄᓄᓄᓄ ᓄᓄᓄᓄᓄᓄᓄᓄ ᓄᓄᓄᓄᓄᓄᓄ ᓄᓄᓄᓄᓄᓄᓄᓄᓄᓄ (ᓄᓄ)
 kNK5 Z?mq5 r[Z6gw?4g5 vNbu wq3CJoEp4f8k5 y8g4t5tps9l t4
 kNosJi cz b]h0E] 3j 5 x7ml yMoEi 3j 9l xsMi sJk5 x7ml
 ꜱ6rsmw8N6tbsi q8k5.

4,636 4,492 4,492

Community Aerodrome Radio Stations (CARS)

The Government of Nunavut acts as a NavCanada contractor for CARS operation and maintenance.

ᓄᓄᓄᓄᓄ ᓂᓄᓄᓄᓄᓄᓄᓄ - ᓄᓄᓄᓄᓄᓄᓄᓄᓄᓄᓄᓄᓄ
 kNK5 Z?m4fq5 Wsync6S5 wm3usboEp4f5 sux3JxoEp4fq 8k5
 y8g4t5t9l t4 hc3ymJ5 nN/si q 8k5 x7ml ꜱ6rsmtbsi q8k5
 sux3Jx4f5 i sCw=s?4g5.

394 394 394

Minor Works - Coast Guard

The Government of Nunavut acts as a Department of Fisheries-Coast Guard contractor for the repair and maintenance of marine re-supply facilities.

ᓄᓄᓄᓄᓄᓄᓄᓄ ᓄᓄᓄᓄᓄᓄᓄ ᓄᓄᓄᓄᓄᓄᓄᓄ ᓄᓄᓄᓄᓄᓄᓄᓄ (ACAP)
 b8N wqCJoEp4fK5 vNbu ꜱNs/c6tbs9l i WoExaJ6
 wvJ6y0Jbsi x3m5 ꜱNs/c6tbsi q 8k5 u5b3=1i xrgJk5 WoE0JbsJ5
 x4gxi c6g5 x5bN0/w3ymi 3j 5, Wdt9l nS7u/si q 8k5 x7ml
 xsM5t0Jt5 xrq 8i 4. 6

- 2,586 -

Airports Capital Assistance Program (ACAP)

This Transport Canada sponsored program assists to finance Airports capital projects related to safety, asset protection and operating cost reduction. 6

6 n6rt5tMs6g5 xuhi 4 g4yCsti 4 N7m4gk5 u5b3=1k5 xrgJtk5 wvJt4nw5 Wp5tCDtz b mo4b4noxc q 8i 5 _
 xq 6bsMs3l i Z?mgc4f8k5

6 Filed several applications that fit ACAP criteria - pending Federal approval.

NI Nw6bsi q5 w6vNw/6bsMs6g5 xyu8i 4 r[Z3gw9l t4
DETAIL OF WORK PERFORMED ON BEHALF OF THIRD PARTIES

	ᓄᓇᓂᓐ ᓄᓇᓂᓐ 2003-2004 Main Estimates (\$000)	ᓄᓇᓂᓐ ᓄᓇᓂᓐ 2002-2003 Revised Estimates (\$000)	ᓄᓇᓂᓐ ᓄᓇᓂᓐ 2002-2003 Main Estimates (\$000)
ᓄᓇᓂᓐ ᓄᓇᓂᓐ ᓄᓇᓂᓐ ᓄᓇᓂᓐ wM09l i s4 kNKu kNpDtK5 xqDtsJK5, WoE=z 5 wkoEpgc4f5 x7ml srs6b6gu W?9oxt5yi 3j 5 jNs/c6t5tc5b6g5 kNK5 Z?m4fq8i 4 xro6hw0J tq 8k5 wvJDbsi x6gi 4 kNoEpsJ5 jNs0/4jq 8k5 x7ml wvJyxq 8k5 kNosJi; j8N WoExaJ6 k6r[bsymK6 xsMi c3i x6t9l A !((#_u5 tr9l A @))#.	1,126	1,126	1,126
Land Administration - Nunavut Land Claims Agreement As part of the NLCA, the Department of Indian Affairs and Northern Development provides funding through the Government of Nunavut to offset the cost of land administrators' salaries and benefits for the communities; this program is designed to run from 1993 to 2003.			
ᓄᓇᓂᓐ ᓄᓇᓂᓐ ᓄᓇᓂᓐ ᓄᓇᓂᓐ xsM0Jtk5 xr0/q5 st6tbsi q 8k5 WQxDt5 kNKu gx=3N6gk5 xsM5y0JbsJi jNs/c6tbst9l Q5 gx=3N6gk5 X3Nwp4fk5 vNbu.	152	151	151
Emergency Planning Canada (EPC) Memorandum of Understanding (MOU) Operational Costs recovery initiative for Nunavut Emergency Management sponsored by EPC.			

NI Nw6bsi q5 w6vNw/6bsMs6g5 xyu8i 4 r[Z3gw9l t4
 DETAIL OF WORK PERFORMED ON BEHALF OF THIRD PARTIES

	ᐱᓕᓂᐃᑦᑦ ᐱᓕᓂᐃᑦᑦ 2003-2004 Main (\$000)	ᐱᓕᓂᐃᑦᑦᑦᑦ ᐱᓕᓂᐃᑦᑦᑦ 2002-2003 Revised (\$000)	ᐱᓕᓂᐃᑦᑦ ᐱᓕᓂᐃᑦᑦ 2002-2003 Main (\$000)
ᐅᐱᐱᑦᑦᑦᑦᑦᑦᑦᑦ ᓄᓇᑦᑦ ᐅᐱᐱᑦᑦᑦᑦᑦᑦᑦᑦ ᐱᓕᓂᐃᑦᑦ x3Ak5 Wz hk5 grymct01i 4f5 xqDtsJ6 n6rbsd9l 05 sux3JxoEpsJ5 vg0pct0q5 srs6b6gu n6r73i 6nsd9l 05 kNKu, sz s J r h Nt P9 l Al xJD8j 6n6bsi q5 X6nwp5 x7m ei 6tsJ5 WoEJ8N3i E/q5, x7m xsM /wJ8Nd9l 05 Jxi 4 Wp9o6t5yJ N3i x3mb sux3JxoEpsJ5 n6r7 i E/q8l x6r4bsyml t4 W/Exc6bq8k5 kNKu kNosJ5.	153	230	230
Coast Guard Nunavut Arctic Auxillary Program Three Year Memorandum of Understanding to establish Coast Guard Arctic Auxilliary presence in Nunavut, expand local Auxilliary volunteers, enhance capacity of SAR expertise, and mobilize vessels to develop and put in place an Auxiliary presence tailored to the requirements of Nunavut communities.			
ᓄᓇᑦᑦ - ᓄᓇᑦᑦ ᐱᓕᓂᐃᑦᑦᑦ ᐃᓂᑦᑦᑦᑦᑦᑦᑦᑦᑦ ᐱᓕᓂᐃᑦᑦ vNb_kNK5 WoE)=sJ5 wi c6tbsi q8k5 xqDtsJ6 fNs/c6t5tc5b6S6 x?tj 5 hC5tE5bwom0Jtq8i 4 kNo1i Z?msJ5	1,065	1,066	1,066
Canada - Nunavut Infrastructure Program Canada-Nunavut Infrastructure Agreement funds environmentally sustainable ("green") municipal infrastructure projects.			
ᓄᓂᑦᑦᑦ ᐱᓕᓂᐃᑦᑦᑦ Total Department	7,526	10,045	7,459

x[A6g3ymi q5 xsM0Jtk5 }6rsmw8NDtk9l xg6g4n5
DISTRIBUTION OF OPERATIONS AND MAINTENANCE BUDGET

	ᓄᓐ ᓄᓐ ᓄᓐ ᓄᓐ Headquarters (\$000)	ᓄᓐ ᓄᓐ Qikiqtaaluk (\$000)	ᓄᓐ ᓄᓐ Kivalliq (\$000)	ᓄᓐ ᓄᓐ Kitikmeot (\$000)	ᓄᓐ ᓄᓐ Total (\$000)
w6vNw/6tk5 xrosyx5 wv}y9l Compensation and Benefits	8,378	2,568	1,221	1,124	13,291
g8i 6ft5 x7m wv}y9l Grants and Contributions	2,812	18,516	10,404	8,331	40,063
i sDc5bD}5 wq Cj}9l Travel and Transportation	1,901	668	249	212	3,030
x9M}=oE0Jt5 hN4fb9l Materials and Supplies	378	413	50	37	878
i s=6bs9l t4 Wp5yDt5 Purchased Services	195	65	48	15	323
ᓄᓐ ᓄᓐ ᓄᓐ Utilities	305	470	-	143	918
y8g}tA5 Wp5yDt5 Contract Services	4,080	3,433	2,388	1,501	11,402
xroEx05 xro6hw0Jy9l Fees and Payments	1,384	53	68	25	1,530
xyq5 xroEx05 Other Expenses	387	114	40	47	588
ᓄᓐ ᓄᓐ ᓄᓐ ᓄᓐ ᓄᓐ Total Operations & Maintenance	19,820	26,300	14,468	11,435	72,023





ᐃᓕᑖᐃᓕᓕᓕᓕᓕ



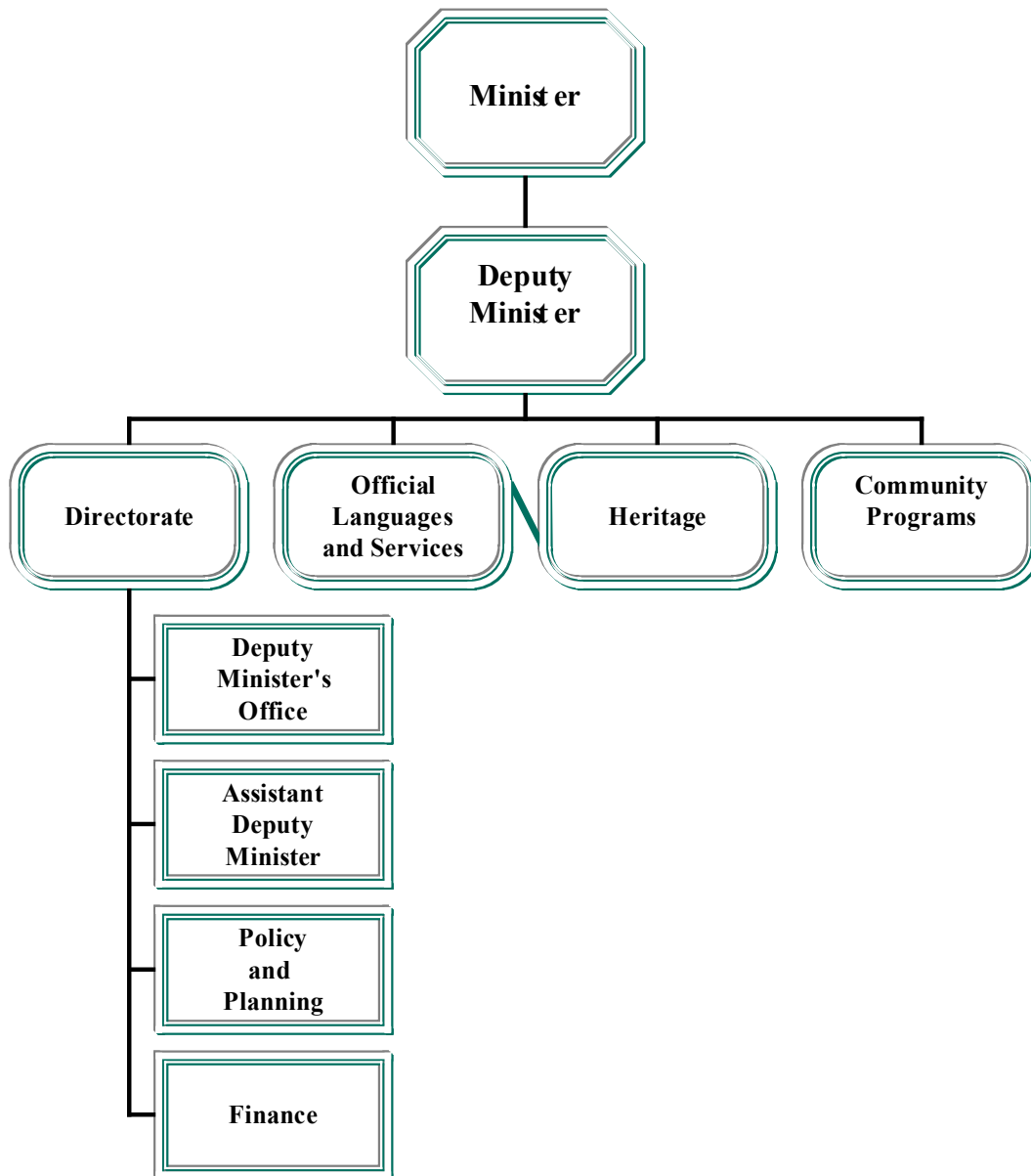
CULTURE, LANGUAGE,
ELDERS AND YOUTH

Jack Anawak
Minister

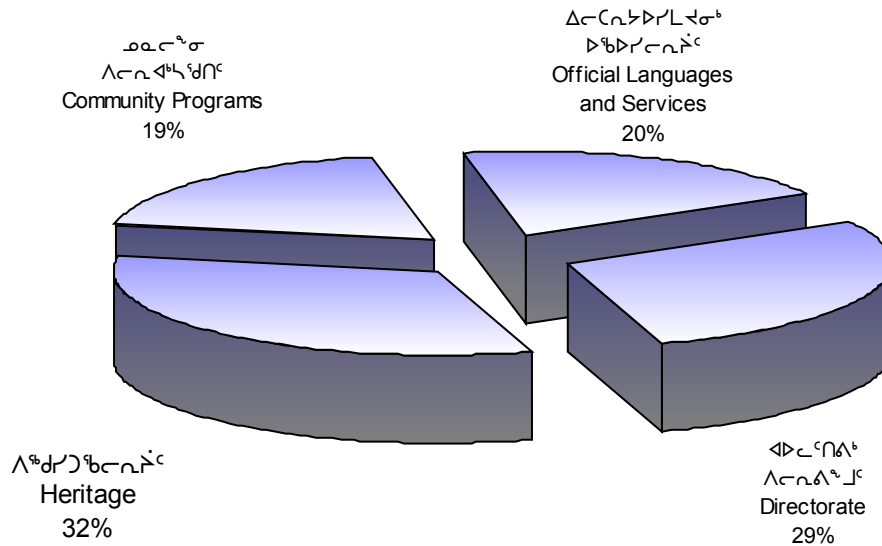
Leona Aglukkaq
Deputy Minister

Anthony Saez
Assistant Deputy Minister

ACCOUNTING STRUCTURE CHART



ᐃᐱᑦᐱᑦᐱᑦᐱᑦ ᐃᑦᐱᑦᐱᑦᐱᑦ
DETAIL OF EXPENDITURES



ᑦᐱᑦᐱᑦᐱᑦᐱᑦ	DESCRIPTION	ᑦᐱᑦᐱᑦᐱᑦᐱᑦ	ᐃᑦᐱᑦᐱᑦᐱᑦᐱᑦ	ᑦᐱᑦᐱᑦᐱᑦᐱᑦ
		2003-2004 Main Estimates (\$000)	2002-2003 Revised Estimates (\$000)	2002-2003 Main Estimates (\$000)
ᐃᑦᐱᑦᐱᑦᐱᑦᐱᑦ ᐃᑦᐱᑦᐱᑦᐱᑦ ᐃᑦᐱᑦᐱᑦᐱᑦ	Compensation and Benefits	4,403	3,970	3,970
ᐱᑦᐱᑦᐱᑦᐱᑦ ᐃᑦᐱᑦᐱᑦᐱᑦ	Grants and Contributions	2,506	2,356	2,356
ᐱᑦᐱᑦᐱᑦᐱᑦ ᐃᑦᐱᑦᐱᑦᐱᑦ	Travel and Transportation	1,012	969	969
ᐃᑦᐱᑦᐱᑦᐱᑦᐱᑦ ᐃᑦᐱᑦᐱᑦᐱᑦ	Materials and Supplies	275	340	340
ᐱᑦᐱᑦᐱᑦᐱᑦᐱᑦ ᐃᑦᐱᑦᐱᑦᐱᑦ	Purchased Services	375	348	348
ᐃᑦᐱᑦᐱᑦᐱᑦᐱᑦ	Utilities	-	-	-
ᐃᑦᐱᑦᐱᑦᐱᑦᐱᑦ	Contract Services	271	393	393
ᐃᑦᐱᑦᐱᑦᐱᑦᐱᑦ ᐃᑦᐱᑦᐱᑦᐱᑦᐱᑦ	Fees and Payments	137	133	133
ᐃᑦᐱᑦᐱᑦᐱᑦᐱᑦ	Other Expenses	243	213	213
ᐃᑦᐱᑦᐱᑦᐱᑦᐱᑦ ᐃᑦᐱᑦᐱᑦᐱᑦᐱᑦ	Total Operations & Maintenance	9,222	8,722	8,722
ᐃᑦᐱᑦᐱᑦᐱᑦᐱᑦ	Total Capital	1,035	987	535
ᐃᑦᐱᑦᐱᑦᐱᑦᐱᑦ	Total Expenditures	10,257	9,709	9,257

ᐱᑦᑲᑦᑲᑦᑲᑦᑲᑦ
HERITAGE

	ᑲᐱᑦᑲᑦᑲᑦᑲᑦ ᐱᑦᑲᑦᑲᑦᑲᑦᑲᑦ 2003-2004 Main Estimates (\$000)	ᐱᑦᑲᑦᑲᑦᑲᑦᑲᑦ ᐱᑦᑲᑦᑲᑦᑲᑦᑲᑦ 2002-2003 Revised Estimates (\$000)	ᑲᐱᑦᑲᑦᑲᑦᑲᑦ ᐱᑦᑲᑦᑲᑦᑲᑦᑲᑦ 2002-2003 Main Estimates (\$000)
ᑲᐱᑦᑲᑦᑲᑦᑲᑦᑲᑦ ᐱᑦᑲᑦᑲᑦᑲᑦᑲᑦ Grants and Contributions			
ᑲᐱᑦᑲᑦᑲᑦᑲᑦᑲᑦ Gran s			
ᐱᑦᑲᑦᑲᑦᑲᑦᑲᑦᑲᑦᑲᑦ ᐱᑦᑲᑦᑲᑦᑲᑦᑲᑦᑲᑦ ᐱᑦᑲᑦᑲᑦᑲᑦᑲᑦᑲᑦ ᑲᐱᑦᑲᑦᑲᑦᑲᑦᑲᑦᑲᑦ ᐱᑦᑲᑦᑲᑦᑲᑦᑲᑦᑲᑦᑲᑦ ᐱᑦᑲᑦᑲᑦᑲᑦᑲᑦᑲᑦᑲᑦ ᐱᑦᑲᑦᑲᑦᑲᑦᑲᑦᑲᑦᑲᑦᑲᑦ ᐱᑦᑲᑦᑲᑦᑲᑦᑲᑦᑲᑦᑲᑦ ᐱᑦᑲᑦᑲᑦᑲᑦᑲᑦᑲᑦᑲᑦ ᐱᑦᑲᑦᑲᑦᑲᑦᑲᑦᑲᑦᑲᑦᑲᑦ ᐱᑦᑲᑦᑲᑦᑲᑦᑲᑦᑲᑦᑲᑦ ᐱᑦᑲᑦᑲᑦᑲᑦᑲᑦᑲᑦᑲᑦ	150	150	150
Cultural and Heritage Activities To provide financial assistance for projects that promote cultural identity and the enhancement of cultures represented in Nunavut.			
ᐱᑦᑲᑦᑲᑦᑲᑦᑲᑦᑲᑦᑲᑦ ᑲᐱᑦᑲᑦᑲᑦᑲᑦᑲᑦᑲᑦᑲᑦ ᐱᑦᑲᑦᑲᑦᑲᑦᑲᑦᑲᑦᑲᑦᑲᑦ ᐱᑦᑲᑦᑲᑦᑲᑦᑲᑦᑲᑦᑲᑦᑲᑦ ᐱᑦᑲᑦᑲᑦᑲᑦᑲᑦᑲᑦᑲᑦ ᐱᑦᑲᑦᑲᑦᑲᑦᑲᑦᑲᑦᑲᑦᑲᑦ ᐱᑦᑲᑦᑲᑦᑲᑦᑲᑦᑲᑦᑲᑦᑲᑦ ᐱᑦᑲᑦᑲᑦᑲᑦᑲᑦᑲᑦᑲᑦ ᐱᑦᑲᑦᑲᑦᑲᑦᑲᑦᑲᑦᑲᑦᑲᑦ ᐱᑦᑲᑦᑲᑦᑲᑦᑲᑦᑲᑦᑲᑦᑲᑦ ᐱᑦᑲᑦᑲᑦᑲᑦᑲᑦᑲᑦᑲᑦ	260	260	260
Cultural and Communications Programs To support and encourage individuals and organizations actively involved in the preservation, portrayal and promotion of heritage in Nunavut.			
ᐱᑦᑲᑦᑲᑦᑲᑦᑲᑦᑲᑦᑲᑦ ᑲᐱᑦᑲᑦᑲᑦᑲᑦᑲᑦᑲᑦ Total Grants	410	410	410

ᐱᑦᐃᑦᑎᑦᑎᑦ HERITAGE

	ᐃᑦᐃᑦᑎᑦᑎᑦ ᐃᑦᐃᑦᑎᑦᑎᑦ	ᐱᑦᑎᑦᑎᑦᑎᑦᑎᑦ ᐱᑦᑎᑦᑎᑦᑎᑦᑎᑦ	ᐃᑦᐃᑦᑎᑦᑎᑦ ᐱᑦᑎᑦᑎᑦᑎᑦ
ᑎᑦᐃᑦᑎᑦᑎᑦ ᐱᑦᑎᑦᑎᑦᑎᑦ	2003-2004 Main Estimates (\$000)	2002-2003 Revised Estimates (\$000)	2002-2003 Main Estimates (\$000)
ᑎᑦᐃᑦᑎᑦᑎᑦ ᐱᑦᑎᑦᑎᑦᑎᑦ			
ᑎᑦᐃᑦᑎᑦᑎᑦ ᐱᑦᑎᑦᑎᑦᑎᑦ			
ᐃᑦᐃᑦᑎᑦᑎᑦᑎᑦ ᐱᑦᑎᑦᑎᑦᑎᑦᑎᑦ ᐱᑦᑎᑦᑎᑦᑎᑦᑎᑦ ᐱᑦᑎᑦᑎᑦᑎᑦᑎᑦ ᐱᑦᑎᑦᑎᑦᑎᑦᑎᑦ ᐱᑦᑎᑦᑎᑦᑎᑦᑎᑦ ᐱᑦᑎᑦᑎᑦᑎᑦᑎᑦ ᐱᑦᑎᑦᑎᑦᑎᑦᑎᑦ ᐱᑦᑎᑦᑎᑦᑎᑦᑎᑦ ᐱᑦᑎᑦᑎᑦᑎᑦᑎᑦ ᐱᑦᑎᑦᑎᑦᑎᑦᑎᑦ ᐱᑦᑎᑦᑎᑦᑎᑦᑎᑦ	250	250	250
Nunavut Arts			
To support and encourage the continued development of the arts in Nunavut, financial support will be provided:			
1) for the promotion of the arts;			
2) to enable the creation, presentation, appreciation and study of the arts in Nunavut.			
<hr/>			
ᐃᑦᐃᑦᑎᑦᑎᑦᑎᑦ ᐱᑦᑎᑦᑎᑦᑎᑦᑎᑦ ᐱᑦᑎᑦᑎᑦᑎᑦᑎᑦ	306	306	306
Cultural and Heritage Activities			
To provide financial assistance for projects that promote cultural identity and the enhancement of cultures represented in Nunavut.			
<hr/>			
ᐃᑦᐃᑦᑎᑦᑎᑦᑎᑦ ᐱᑦᑎᑦᑎᑦᑎᑦᑎᑦ ᐱᑦᑎᑦᑎᑦᑎᑦᑎᑦ	250	250	250
Cultural and Communications Programs			
To support and encourage individuals and organizations actively involved in the preservation, portrayal and promotion of heritage in Nunavut.			

ᐱᓄᓯᓴᓂᓴᓐ
HERITAGE

ᓂᓄᓴᓴᓐ ᐱᓴᓂ ᐃᓄᓴᓴᓐ	ᓴᓄᓴᓴᓐ ᐱᓄᓴᓴᓐ 2003-2004 Main Estimates (\$000)	ᐱᓄᓴᓴᓐ ᐱᓄᓴᓴᓐ 2002-2003 Revised Estimates (\$000)	ᓴᓄᓴᓴᓐ ᐱᓄᓴᓴᓐ 2002-2003 Main Estimates (\$000)
ᓂᓄᓴᓴᓐ ᐃᓄᓴᓴᓐ			
ᐃᓄᓴᓴᓐ <i>Con ributions (con 'd...)</i>			
ᐱᓂᓴᓴᓐ ᓄᓄᓄᓐ ᐱᓴᓐᓂᓴᓐ ᐱᓂᓴᓴᓐ ᓄᓄᓄᓐ ᐱᓴᓐᓂᓴᓐ ᓄᓄᓄᓐ ᐱᓴᓐᓂᓴᓐ ᐱᓂᓴᓴᓐ ᓄᓄᓄᓐ ᐱᓴᓐᓂᓴᓐ ᐱᓂᓴᓴᓐ ᓄᓄᓄᓐ ᐱᓴᓐᓂᓴᓐ ᐱᓂᓴᓴᓐ ᓄᓄᓄᓐ ᐱᓴᓐᓂᓴᓐ	100	-	-
Toponymy Programs To provide financial support to individuals and community organizations actively involved in the promotion and preservation of traditional place names			
<i>ᓄᓄᓄᓐ ᐃᓄᓴᓴᓐ</i> To al Con ributions	906	806	806
ᓄᓄᓄᓐ ᓂᓄᓴᓴᓐ ᐃᓄᓴᓴᓐ Total Grants and Contributions	1,316	1,216	1,216

ᐅᑦᐅᑦᐅᑦ ᐱᑦᐅᑦᐅᑦᐅᑦ
COMMUNITY PROGRAMS

	ᑦᐅᑦᐅᑦᐅᑦ ᐅᑦᐅᑦᐅᑦᐅᑦ 2003-2004 Main Estimates (\$000)	ᐅᑦᐅᑦᐅᑦᐅᑦᐅᑦ ᐅᑦᐅᑦᐅᑦᐅᑦᐅᑦ 2002-2003 Revised Estimates (\$000)	ᑦᐅᑦᐅᑦᐅᑦ ᐅᑦᐅᑦᐅᑦᐅᑦ 2002-2003 Main Estimates (\$000)
ᑦᐅᑦᐅᑦᐅᑦ ᐅᑦᐅᑦᐅᑦᐅᑦ Grants and Contributions			
ᑦᐅᑦᐅᑦᐅᑦ Gran s			
ᐅᑦᐅᑦᐅᑦ ᐱᑦᐅᑦᐅᑦᐅᑦᐅᑦᐅᑦ ᑦᐅᑦᐅᑦᐅᑦ ᑦᐅᑦᐅᑦ ᐅᑦᐅᑦᐅᑦᐅᑦᐅᑦ ᐅᑦᐅᑦᐅᑦᐅᑦᐅᑦ ᐅᑦᐅᑦᐅᑦᐅᑦᐅᑦ ᐅᑦᐅᑦᐅᑦᐅᑦ ᐅᑦᐅᑦᐅᑦᐅᑦᐅᑦ ᐅᑦᐅᑦᐅᑦᐅᑦᐅᑦ ᐅᑦᐅᑦᐅᑦᐅᑦᐅᑦ ᐅᑦᐅᑦᐅᑦᐅᑦ ᐅᑦᐅᑦᐅᑦᐅᑦᐅᑦ ᐅᑦᐅᑦᐅᑦᐅᑦᐅᑦ ᐅᑦᐅᑦᐅᑦᐅᑦᐅᑦ ᐅᑦᐅᑦᐅᑦᐅᑦᐅᑦ.	50	50	50
Women's Initiative Grants Applies to societies, governments and community organizations that direct their efforts to enhancing the cultural, economic, political and social participation of			
ᐅᑦᐅᑦᐅᑦᐅᑦ ᐱᑦᐅᑦᐅᑦᐅᑦᐅᑦ ᐱᑦᐅᑦᐅᑦᐅᑦᐅᑦ ᐅᑦᐅᑦᐅᑦᐅᑦᐅᑦ ᐅᑦᐅᑦᐅᑦᐅᑦᐅᑦ ᐅᑦᐅᑦᐅᑦᐅᑦᐅᑦ ᐅᑦᐅᑦᐅᑦᐅᑦᐅᑦ ᐅᑦᐅᑦᐅᑦᐅᑦᐅᑦ ᐅᑦᐅᑦᐅᑦᐅᑦᐅᑦ ᐅᑦᐅᑦᐅᑦᐅᑦᐅᑦ ᐅᑦᐅᑦᐅᑦᐅᑦᐅᑦ.	150	125	125
Youth Initiatives To provide financial assistance for projects that promote youth initiatives.			
ᐅᑦᐅᑦᐅᑦᐅᑦ ᐱᑦᐅᑦᐅᑦᐅᑦᐅᑦ ᐱᑦᐅᑦᐅᑦᐅᑦᐅᑦ ᐅᑦᐅᑦᐅᑦᐅᑦᐅᑦ ᐅᑦᐅᑦᐅᑦᐅᑦᐅᑦ ᐅᑦᐅᑦᐅᑦᐅᑦᐅᑦ ᐅᑦᐅᑦᐅᑦᐅᑦᐅᑦ ᐅᑦᐅᑦᐅᑦᐅᑦᐅᑦ ᐅᑦᐅᑦᐅᑦᐅᑦᐅᑦ ᐅᑦᐅᑦᐅᑦᐅᑦᐅᑦ ᐅᑦᐅᑦᐅᑦᐅᑦᐅᑦ.	150	125	125
Elders Initiatives To provide financial assistance for projects that promote elder initiatives.			
ᐅᑦᐅᑦᐅᑦᐅᑦ ᑦᐅᑦᐅᑦᐅᑦᐅᑦ Total Gran s	350	300	300

ᐱᑦᑲᑦᑲᑦᑲᑦᑲᑦ ᐃᑦᑲᑦᑲᑦᑲᑦᑲᑦ ᐃᑦᑲᑦᑲᑦᑲᑦᑲᑦ
DETAIL OF WORK PERFORMED ON BEHALF OF THIRD PARTIES

	ᑭᑦᑲᑦᑲᑦᑲᑦᑲᑦ ᐃᑦᑲᑦᑲᑦᑲᑦᑲᑦ	ᐃᑦᑲᑦᑲᑦᑲᑦᑲᑦ ᐃᑦᑲᑦᑲᑦᑲᑦᑲᑦ	ᑭᑦᑲᑦᑲᑦᑲᑦᑲᑦ ᐃᑦᑲᑦᑲᑦᑲᑦᑲᑦ
	2003-2004 Main Estimates (\$000)	2002-2003 Revised Estimates (\$000)	2002-2003 Main Estimates (\$000)
ᐃᑦᑲᑦᑲᑦᑲᑦᑲᑦ ᐃᑦᑲᑦᑲᑦᑲᑦᑲᑦ ᐃᑦᑲᑦᑲᑦᑲᑦᑲᑦ ᐃᑦᑲᑦᑲᑦᑲᑦᑲᑦ ᐃᑦᑲᑦᑲᑦᑲᑦᑲᑦ ᐃᑦᑲᑦᑲᑦᑲᑦᑲᑦ ᐃᑦᑲᑦᑲᑦᑲᑦᑲᑦ ᐃᑦᑲᑦᑲᑦᑲᑦᑲᑦ ᐃᑦᑲᑦᑲᑦᑲᑦᑲᑦ ᐃᑦᑲᑦᑲᑦᑲᑦᑲᑦ ᐃᑦᑲᑦᑲᑦᑲᑦᑲᑦ ᐃᑦᑲᑦᑲᑦᑲᑦᑲᑦ ᐃᑦᑲᑦᑲᑦᑲᑦᑲᑦ ᐃᑦᑲᑦᑲᑦᑲᑦᑲᑦ ᐃᑦᑲᑦᑲᑦᑲᑦᑲᑦ	2,550	2,550	2,550
Official Languages Agreement Under the current Canada-Nunavut Cooperation Agreement for French and Inuit Languages in Nunavut, funding is provided for the provision of government services and community initiatives in French and community initiatives in Inuktitut.			
ᐃᑦᑲᑦᑲᑦᑲᑦᑲᑦ ᐃᑦᑲᑦᑲᑦᑲᑦᑲᑦ	2,550	2,550	2,550

ፈላጊነት ለሰዎች ለሰዎች ፈላጊነት ለሰዎች ለሰዎች



ᐃᓕᓐᓂᐱᓐᓂᓕᓕᓕᓐ



Δፍፈጽፊ ልረካልፎ ህፃናዎች ለሥራ ልረጽፎ ለሥራ ለሥራ

፳፻፲፱/፳፻፲፱ ልረጽፎ ልረጽፎ ልረጽፎ
xg6g4n5 ልረጽፎ ልረጽፎ
2002-2003 2002-2003
Revised Main
Estimates Estimates

xSM0Jts?4g5 ckwoz i q5

xg6bsJ5 st6g4nw5, mgwDtsJ6

2,690 2,690

wMI A:

ሥራ ለሥራ ለሥራ ለሥራ
ሥራ ለሥራ ለሥራ ለሥራ

Loans granted during the year
Reversal of previous loan remissions

500 500
- -

W/6bsl t4:

ሥራ ለሥራ ለሥራ ለሥራ
ሥራ ለሥራ ለሥራ ለሥራ
ሥራ ለሥራ ለሥራ ለሥራ

Principle amount of loans repaid
Principle amount of loans written off
Principle amount of loan remission

125 125
- -
200 200

xg6bsJi 4 st3=sJ5, mgAt

W/6bsl t4:

ሥራ ለሥራ ለሥራ ለሥራ

Estimated provision for remission

1,

Δc°σ<δ&°ω< Λ&°γ?η<

†Ns/5	Δ°PP<δ°γL<°	°α>°<
xg6g4n5	<δ°σσC°	<δ°σσC°
	2002-2003	2002-2003

Δራሙላላ ለረባረባዎች

ጋራ ስራ ለማስፈጸም የሚያስፈልጉትን ለረባረባዎች ለመስጠት ይህ ደብዳቤ ለማዘጋጀት ይረዳል። ለረባረባዎች ለመስጠት የሚያስፈልጉትን ለረባረባዎች ለመስጠት ይህ ደብዳቤ ለማዘጋጀት ይረዳል።

	ገንዘብ / ዓመት xg6g4n5	የተጠቃሚው ገንዘብ 2002-2003 Revised Estimates	የሚጠበቅ ገንዘብ 2002-2003 Main Estimates
rhj 7mz 5			
የሥራ ልዩነት ለማስፈጸም Compensation and Benefits		62,093	63,636
ጋራ ስራ ለማስፈጸም Grants and Contributions		9,972	9,315
የጉዞ እና የጉባዔ Travel and Transportation		3,309	1,922
የሥራ ለማስፈጸም Materials and Supplies		243	178
የሥራ ለማስፈጸም Purchased Services		694	654
የሥራ ለማስፈጸም Utilities		7,869	7,543
የሥራ ለማስፈጸም Contract Services		1,050	979
የሥራ ለማስፈጸም Fees and Payments		58	19
የሥራ ለማስፈጸም Other Expenses		227	318
vt9l Q5 xsM5tJገ5 x6rsmw8NDt9l			
vt9l Q5 xrgገtk5			
vt9l Q5 xroExp5			

Δc~σ<δ< ΔD<C>σ~f<

	fNs/5 xg6g4n5	Δ*P<Δ<L< Δ<σ<C<	P<D>< Δ<σ<C<
gi syx5 x7ml wvJlyx5		2002-2003 Revised Estimates	2002-2003 Main Estimates

wvJt5 **Contributions**

kNo1i wo8i x6goEi 3j5 vtmpq8k5 wvJDt5

Δb<?N%<C%< Δc~σ Δc~σ<*)<σ<J< bNL>~f~<
 ΔD<C>σ~f~< ΔP~f~< Δ<L> Δ<Δ~σ<Δ<~f~<
 ΔD<C>σ~f~< Δc~σ<δ<Δ>Δ< ΔP<Δ<%<C%<C~f<

9,972 9,315

Contributions to District Education Authorities for authority administration costs and for a portion of the operating expenses of schools.

vt9l 05 wvJt5 **Total Contributions**

vt9l 05 gi /sht5 wvJt9l

ᓇᓗᓇᐃᑦᐅᓂᑦᑦᑦ ᐃᑦᑲᓇᐃᑦᑦᐅᓗᓗᓂᑦᑦ ᐃᑦᑦᑦᑦᑦᑦ ᑲᑦᑲᑦᑦᑦᑦᑦᑦ

	ᑦᑦᑦᑦ/ᑦᑦ xg6g4n5	ᐃᑦᑲᑦᑦᑦᑦᑦᑦᑦ ᐃᑦᑦᑦᑦᑦᑦᑦ 2002-2003 Revised Estimates	ᑲᓇᓗᓂᑦᑦ ᐃᑦᑦᑦᑦᑦᑦᑦ 2002-2003 Main Estimates
--	--------------------	---	--

wonE/symJ5 scsy5 wo8i x6goEi 3u

ᐱᓕᓕᓂᑦᑲᑦᑲᑦᑦᑦᑦᑦᑦ ᑲᓇᐅᓗᓂᑦ ᓕᓕᓕᓂᑦᑦᑦᑦ ᐃᓕᓕᓂᑦᑦᑦᑦ ᐃᑲᑦᑦᑦᑦᑦᑦᑦᑦᑦᑦ
 ᐱᓕᓕᓂᑦᑦᑦᑦᑦᑦᑦᑦ ᐃᓕᓕᓂᑦᑦᑦᑦᑦᑦᑦᑦ ᐃᑲᑦᑦᑦᑦᑦᑦᑦᑦᑦᑦ ᐃᓕᓕᓂᑦᑦᑦᑦᑦᑦᑦᑦᑦᑦ
 ᐃᓕᓕᓂᑦᑦᑦᑦᑦᑦᑦᑦ ᐃᓕᓕᓂᑦᑦᑦᑦᑦᑦᑦᑦᑦᑦ ᐃᓕᓕᓂᑦᑦᑦᑦᑦᑦᑦᑦᑦᑦ ᐃᓕᓕᓂᑦᑦᑦᑦᑦᑦᑦᑦᑦᑦ
 ᐃᓕᓕᓂᑦᑦᑦᑦᑦᑦᑦᑦᑦᑦ ᐃᓕᓕᓂᑦᑦᑦᑦᑦᑦᑦᑦᑦᑦ ᐃᓕᓕᓂᑦᑦᑦᑦᑦᑦᑦᑦᑦᑦ ᐃᓕᓕᓂᑦᑦᑦᑦᑦᑦᑦᑦᑦᑦ
 ᐃᓕᓕᓂᑦᑦᑦᑦᑦᑦᑦᑦᑦᑦ ᐃᓕᓕᓂᑦᑦᑦᑦᑦᑦᑦᑦᑦᑦ ᐃᓕᓕᓂᑦᑦᑦᑦᑦᑦᑦᑦᑦᑦ ᐃᓕᓕᓂᑦᑦᑦᑦᑦᑦᑦᑦᑦᑦ

768 641

Partnership between Government of Canada and Government of Nunavut to support the development of official-language minority communities and to promote the recognition and usage of French as a first and second language in Nunavut. Additional funding to support Francophone school governance.

cEbs/s2 i W4n/z k5 e9o6gj 5 wo/si q5 w5b3i nc3=sJ5

ᐱᓕᓕᓂᑦᑲᑦᑲᑦᑦᑦᑦᑦᑦ ᐃᓕᓕᓂᑦᑦᑦᑦᑦᑦᑦᑦ ᐱᓕᓕᓂᑦᑦᑦᑦᑦᑦᑦᑦᑦᑦ ᐱᓕᓕᓂᑦᑦᑦᑦᑦᑦᑦᑦᑦᑦ ᐃᓕᓕᓂᑦᑦᑦᑦᑦᑦᑦᑦᑦᑦ
 ᐃᓕᓕᓂᑦᑦᑦᑦᑦᑦᑦᑦᑦᑦ ᐃᓕᓕᓂᑦᑦᑦᑦᑦᑦᑦᑦᑦᑦ ᐃᓕᓕᓂᑦᑦᑦᑦᑦᑦᑦᑦᑦᑦ ᐃᓕᓕᓂᑦᑦᑦᑦᑦᑦᑦᑦᑦᑦ
 ᐃᓕᓕᓂᑦᑦᑦᑦᑦᑦᑦᑦᑦᑦ ᐃᓕᓕᓂᑦᑦᑦᑦᑦᑦᑦᑦᑦᑦ ᐃᓕᓕᓂᑦᑦᑦᑦᑦᑦᑦᑦᑦᑦ ᐃᓕᓕᓂᑦᑦᑦᑦᑦᑦᑦᑦᑦᑦ

55 55

Partnership between Inuit Heritage Trust Inc. and the Government of Nunavut to develop a C to raise awareness of Inuit pre-history and archaeology and for inclusion in Grade 8 curriculum.

kNo1i cEbs/4f5 WgA8N3yi 3j 5 WoEx6

ᐱᓕᓕᓂᑦᑲᑦᑲᑦᑦᑦᑦᑦᑦ ᑲᓇᐅᓗᓂᑦ ᓕᓕᓕᓂᑦᑦᑦᑦᑦᑦ ᐃᓕᓕᓂᑦᑦᑦᑦᑦᑦᑦᑦ ᐃᓕᓕᓂᑦᑦᑦᑦᑦᑦᑦᑦᑦᑦ
 ᐃᓕᓕᓂᑦᑦᑦᑦᑦᑦᑦᑦᑦᑦ ᐃᓕᓕᓂᑦᑦᑦᑦᑦᑦᑦᑦᑦᑦ ᐃᓕᓕᓂᑦᑦᑦᑦᑦᑦᑦᑦᑦᑦ ᐃᓕᓕᓂᑦᑦᑦᑦᑦᑦᑦᑦᑦᑦ
 ᐃᓕᓕᓂᑦᑦᑦᑦᑦᑦᑦᑦᑦᑦ ᐃᓕᓕᓂᑦᑦᑦᑦᑦᑦᑦᑦᑦᑦ ᐃᓕᓕᓂᑦᑦᑦᑦᑦᑦᑦᑦᑦᑦ ᐃᓕᓕᓂᑦᑦᑦᑦᑦᑦᑦᑦᑦᑦ

47 47

Partnership between Government of Canada and Government of Nunavut to establish public Community Access centres to provide access to the internet for Nunavut residents.

ᓇᓗᓇᐃᑦᐅᓂᓴᑦ ᐃᑦᑲᓇᐃᑦᑲᑦᐅᓗᓗᓂᑦ)ᑦ ᐃᑦᑲᓂᑦ ᑲᑲᑲᑦᐅᓗᓂᑦ

	ᑲᑲᑲᑦᐅᓗᓂᑦ xg6g4n5	ᐃᑦᑲᓂᑦᐅᓗᓂᑦ ᐃᑦᑲᓂᑦᐅᓗᓂᑦ 2002-2003 Revised Estimates	ᑲᑲᑲᑦᐅᓗᓂᑦ ᐃᑦᑲᓂᑦᐅᓗᓂᑦ 2002-2003 Main Estimates
--	---------------------	---	---

w8Nsi 6nsJ5 w6vNw/6t5 cspn3i 4f5 W0xDt0/sJ6
 ᐱᓕᓕᓂᑲᑲᑲᑦᐅᓗᓂᑦ ᑲᓇᐅᓗᓂ ᓂᓗᓂᑦ ᓂᓗᓂᑦ ᐃᓗᐃᓂᑲᑲᑲᑦᐅᓗᓂᑦ
 ᐃᓂᓗᓂᑲᑲᑲᑦᐅᓗᓂᑦ ᐃᑦᑲᓂᑦᐅᓗᓂᑦ ᐅᑲᑲᓂᓴᑦᐅᓗᓂᑦ 55-ᑦ 64-ᑦ ᐱᓗᑲᑲᑲᑦᐅᓗᓂᑦ
 ᐱᓕᓕᓂᑲᑲᑲᑦᐅᓗᓂᑦ ᐃᑦᑲᓂᑦᐅᓗᓂᑦ ᐅᑲᑲᓂᓴᑦᐅᓗᓂᑦ.

329 -

Partnership between Government of Canada and Government of Nunavut to provide older workers between ages 55 and 64 with an opportunity to obtain skills, services and support in finding employment.

W6fyoEi 6
 ᐱᓕᓕᓂᑲᑲᑲᑦᐅᓗᓂᑦ ᑲᓇᐅᓗᓂ ᓂᓗᓂᑦ ᐃᓗᓂᑦ ᐱᓂᑲᑲᑲᑦᐅᓗᓂᑦ ᑲᑲᑲᑦᐅᓗᓂᑦ
 ᐱᓂᓗᓂᑲᑲᑲᑦᐅᓗᓂᑦ ᐃᓗᓂᑦ ᐃᓗᓂᑦ ᐃᓗᓂᑦ ᐱᓂᑲᑲᑲᑦᐅᓗᓂᑦ
 ᐅᑲᑲᓂᓴᑦᐅᓗᓂᑦ ᐃᓗᓂᑦ ᐃᓗᓂᑦ ᐃᓗᓂᑦ ᐃᓗᓂᑦ.

12 -

Partnership between Government of Canada and Historica Foundation to develop and expand participation in the Heritage Fair Program.

kNo1k5 cEbs/c3=c3i 3u4 Wp5tCD5 _ s=4vk5 WQxDt4n6
 ᐱᓕᓕᓂᑲᑲᑲᑦᐅᓗᓂᑦ ᑲᓇᐅᓗᓂ ᓂᓗᓂᑦ ᓂᓗᓂᑦ ᐱᑲᑲᑲᑲᑦᐅᓗᓂᑦ ᑲᓇᐅᓗᓂᑦ
 ᐅᑲᑲᓂᓴᑦᐅᓗᓂᑦ ᐃᓗᓂᑦ ᐃᓗᓂᑦ ᐃᓗᓂᑦ ᐃᓗᓂᑦ ᐃᓗᓂᑦ ᐃᓗᓂᑦ ᐃᓗᓂᑦ
 ᐱᓂᓗᓂᑲᑲᑲᑦᐅᓗᓂᑦ ᐃᓗᓂᑦ ᐃᓗᓂᑦ ᐃᓗᓂᑦ ᐃᓗᓂᑦ.

49 -

Partnership between Government of Canada and Government of Nunavut to engage Canadian Youth in information, communication and internet technologies and accelerate the use of internet through Community Access Centres throughout Nunavut.

wl y3l 4gk5 wonDtK5 WoEx6
 ᐱᓕᓕᓂᑲᑲᑲᑦᐅᓗᓂᑦ ᓗᓗᓗᓂᑦ ᓂᓗᓂᑦ ᓂᓗᓂᑦ ᐃᓗᓂᑦ ᓂᓗᓂᑦ ᐃᓗᓂᑦ
 ᐱᓂᓗᓂᑲᑲᑲᑦᐅᓗᓂᑦ ᐃᓂᓗᓂᑲᑲᑲᑦᐅᓗᓂᑦ ᐃᓂᓗᓂᑲᑲᑲᑦᐅᓗᓂᑦ ᐃᓂᓗᓂᑲᑲᑲᑦᐅᓗᓂᑦ
 ᐃᓂᓗᓂᑲᑲᑲᑦᐅᓗᓂᑦ ᐃᓂᓗᓂᑲᑲᑲᑦᐅᓗᓂᑦ ᐃᓂᓗᓂᑲᑲᑲᑦᐅᓗᓂᑦ.

107 -

Partnership between Lakehead University and the Government of Nunavut to establish a Centre of Excellence for Children and Adolescents with Special Needs.

vt9l Q5 WoE}=k5

ᐱᑦᐳᑦᐳᑦᐳᑦᐳᑦ ᐱᑦᐳᑦᐳᑦᐳᑦᐳᑦ ᐱᑦᐳᑦᐳᑦᐳᑦᐳᑦ ᐱᑦᐳᑦᐳᑦᐳᑦᐳᑦ

	xz J6ᐳᐳ=4	er3ᐳᐳ 4	r?9o6	et3us5	vt9l Q5
ᐱᑦᐳᑦᐳᑦᐳᑦᐳᑦ ᐱᑦᐳᑦᐳᑦᐳᑦᐳᑦ ᐱᑦᐳᑦᐳᑦᐳᑦᐳᑦ Compensation and Benefits	8,451	36,557	19,494	12,826	
ᐳᑦᐳᑦᐳᑦᐳᑦ ᐱᑦᐳᑦᐳᑦ ᐱᑦᐳᑦᐳᑦᐳᑦᐳᑦ Grants and Contributions	23,173	6,509	5,257	1,869	
ᑦᐳᐳᑦᐳᑦᐳᑦᐳᑦ ᐱᑦᐳᑦᐳᑦ ᐱᑦᐳᑦᐳᑦᐳᑦᐳᑦ Travel and Transportation	1,679	1,354	901	933	
ᐱᑦᐳᑦᐳᑦᐳᑦᐳᑦᐳᑦ ᐱᑦᐳᑦᐳᑦᐳᑦᐳᑦ Materials and Supplies	889	162	112	50	
ᑦᐳᐳᑦᐳᑦᐳᑦᐳᑦᐳᑦ ᐱᑦᐳᑦᐳᑦᐳᑦᐳᑦᐳᑦ Purchased Services	377	839	426	66	
ᐱᑦᐳᑦᐳᑦᐳᑦᐳᑦᐳᑦ Utilities	-	4,030	2,299	1,829	
ᑦᐳᐳᑦᐳᑦᐳᑦᐳᑦ ᐱᑦᐳᑦᐳᑦᐳᑦᐳᑦᐳᑦ Contract Services	1,057	2,426	960	1,136	
ᐱᑦᐳᑦᐳᑦᐳᑦᐳᑦ ᐱᑦᐳᑦᐳᑦᐳᑦᐳᑦᐳᑦᐳᑦ Fees and Payments	1,021	13,070	5,396	4,237	
ᐱᑦᐳᑦᐳᑦᐳᑦᐳᑦ ᐱᑦᐳᑦᐳᑦᐳᑦᐳᑦ Other Expenses	456	65	39	25	
vt9l Q5 xsm5tJᐳ5 kesmt5tJᐳ9l					





ᐱᓕᓂᐱᓐᓂᓐ
ᐱᓐᓂᐱᓐᓂᓐᓂᓐᓂᓐᓂᓐ
ᐱᓐᓂᐱᓐᓂᓐ



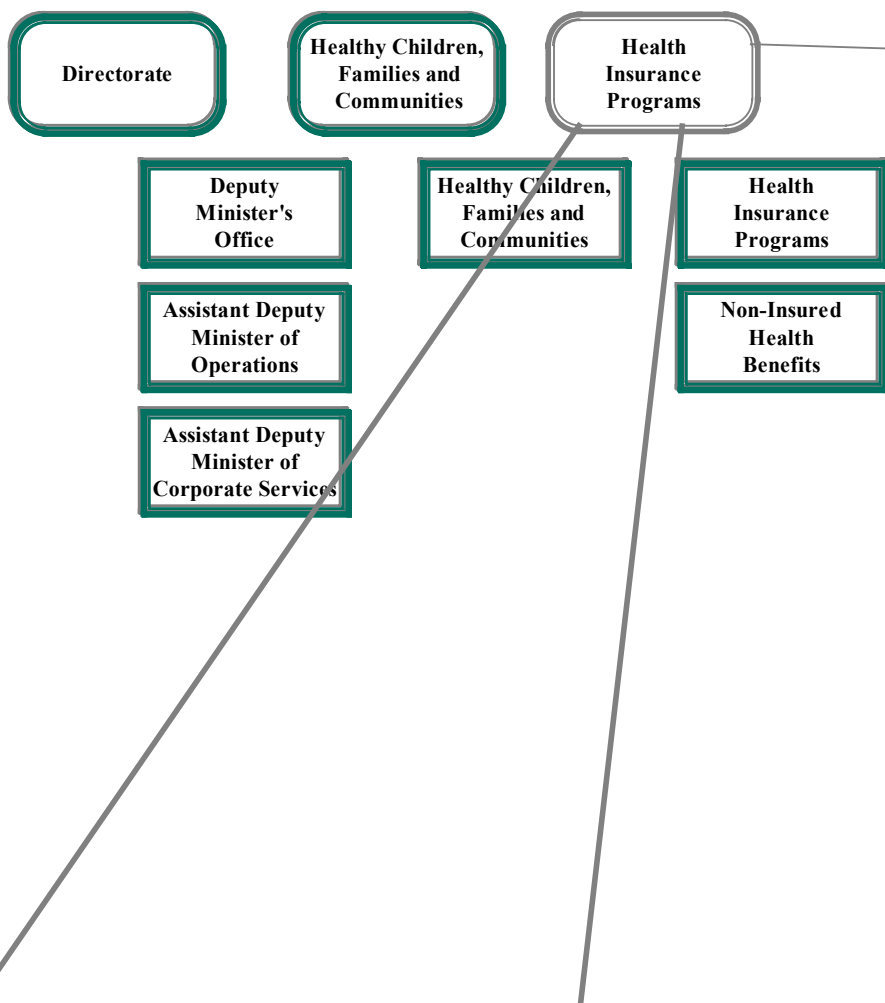
ᐱᓕᓂᐱᓪᐳᓪ ᐱᓕᓂᐱᓪᐳᓪ ᐱᓕᓂᐱᓪᐳᓪ ᐱᓕᓂᐱᓪᐳᓪ
ᐱᓕᓂᐱᓪᐳᓪ ᐱᓕᓂᐱᓪᐳᓪ ᐱᓕᓂᐱᓪᐳᓪ ᐱᓕᓂᐱᓪᐳᓪ

Edward Picco

Wayne Govereau

Keith Best

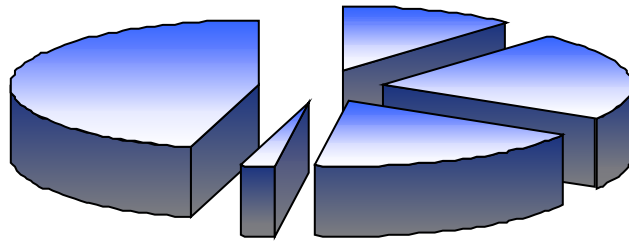
Abraham Tagalik



ለጥናት ላይ የሚደረግ ጥናት ዓይነት ለማወቅ ለሚያስፈልጉት
ለጥናት ዓይነት ይጻፉ

ገጽ ፩ ለግብይት ስራ ለማድረግ ለሚያስፈልጉት ሰነድ ለማግኘት
ገጽ ፪ ለግብይት ስራ ለማድረግ ለሚያስፈልጉት ሰነድ ለማግኘት

ግብይት ስራ ለማድረግ ለሚያስፈልጉት ሰነድ ለማግኘት



ግብይት ስራ ለማድረግ ለሚያስፈልጉት ሰነድ ለማግኘት

ᐱᓕᓂᐱᓪᐳᑦ ᐱᓕᓂᐱᓪᐳᑦ

	ᐱᓕᓂᐱᓪᐳᑦ ᐱᓕᓂᐱᓪᐳᑦ 2003-2004 Main Estimates (\$000)	ᐱᓕᓂᐱᓪᐳᑦ ᐱᓕᓂᐱᓪᐳᑦ 2002-2003 Revised Estimates (\$000)	ᐱᓕᓂᐱᓪᐳᑦ ᐱᓕᓂᐱᓪᐳᑦ 2002-2003 Main Estimates (\$000)
ᐱᓕᓂᐱᓪᐳᑦ ᐱᓕᓂᐱᓪᐳᑦ Grants and Contributions			
ᐱᓕᓂᐱᓪᐳᑦ			
ᐱᓕᓂᐱᓪᐳᑦ ᐱᓕᓂᐱᓪᐳᑦ ᐱᓕᓂᐱᓪᐳᑦ ᐱᓕᓂᐱᓪᐳᑦ ᐱᓕᓂᐱᓪᐳᑦ ᐱᓕᓂᐱᓪᐳᑦ ᐱᓕᓂᐱᓪᐳᑦ ᐱᓕᓂᐱᓪᐳᑦ ᐱᓕᓂᐱᓪᐳᑦ	600	600	600
Nunavut Nursing Program Funding for Nunavut Arctic College for the provision of the Nunavut Nursing Program.			
ᐱᓕᓂᐱᓪᐳᑦ ᐱᓕᓂᐱᓪᐳᑦ ᐱᓕᓂᐱᓪᐳᑦ ᐱᓕᓂᐱᓪᐳᑦ ᐱᓕᓂᐱᓪᐳᑦ ᐱᓕᓂᐱᓪᐳᑦ ᐱᓕᓂᐱᓪᐳᑦ ᐱᓕᓂᐱᓪᐳᑦ ᐱᓕᓂᐱᓪᐳᑦ ᐱᓕᓂᐱᓪᐳᑦ ᐱᓕᓂᐱᓪᐳᑦ ᐱᓕᓂᐱᓪᐳᑦ ᐱᓕᓂᐱᓪᐳᑦ ᐱᓕᓂᐱᓪᐳᑦ ᐱᓕᓂᐱᓪᐳᑦ ᐱᓕᓂᐱᓪᐳᑦ ᐱᓕᓂᐱᓪᐳᑦ ᐱᓕᓂᐱᓪᐳᑦ ᐱᓕᓂᐱᓪᐳᑦ ᐱᓕᓂᐱᓪᐳᑦ ᐱᓕᓂᐱᓪᐳᑦ	166	166	166
Nunavut Arctic College Program To deliver a program which trains individuals from the communities to work in the health and social services field. This training will enable these individuals to provide services such as teaching communities to improve lifestyle habits in diet, etc.			
ᐱᓕᓂᐱᓪᐳᑦ ᐱᓕᓂᐱᓪᐳᑦ ᐱᓕᓂᐱᓪᐳᑦ ᐱᓕᓂᐱᓪᐳᑦ ᐱᓕᓂᐱᓪᐳᑦ ᐱᓕᓂᐱᓪᐳᑦ ᐱᓕᓂᐱᓪᐳᑦ ᐱᓕᓂᐱᓪᐳᑦ ᐱᓕᓂᐱᓪᐳᑦ ᐱᓕᓂᐱᓪᐳᑦ ᐱᓕᓂᐱᓪᐳᑦ ᐱᓕᓂᐱᓪᐳᑦ ᐱᓕᓂᐱᓪᐳᑦ ᐱᓕᓂᐱᓪᐳᑦ	200	200	200
Community of Councils A contribution of \$5,000 per community for support of the operation of hamlet committees on health and social services, as the means of ensuring that community concerns and issues are communicated effectively to the department.			

ግብይት ስራ ለግብይት ስራ

	ግብይት ስራ ግብይት ስራ	ግብይት ስራ ግብይት ስራ	ግብይት ስራ ግብይት ስራ
	2003-2004 Main Estimates (\$000)	2002-2003 Revised Estimates (\$000)	2002-2003 Main Estimates (\$000)
ግብይት ስራ ለግብይት ስራ			
Grants and Contributions			
ግብይት ስራ			
ግብይት ስራ ለግብይት ስራ ለግብይት ስራ			
ግብይት ስራ ለግብይት ስራ ለግብይት ስራ			
ግብይት ስራ ለግብይት ስራ ለግብይት ስራ			
Nursing Scholarships			
To establish the Queen Elizabeth II Scholarships in nursing	20	-	-
ግብይት ስራ ለግብይት ስራ	986	966	966
ግብይት ስራ ለግብይት ስራ ለግብይት ስራ	986	966	966
Total Grants and Contributions	986	966	966

ᑕᑦᑎᑦᑎᑦ ᐱᑦᑕᑦᑎᑦᑎᑦ ᐱᑦᑕᑦᑎᑦᑎᑦ ᐱᑦᑕᑦᑎᑦᑎᑦ ᐱᑦᑕᑦᑎᑦᑎᑦ

	ᐱᑦᑕᑦᑎᑦᑎᑦ ᐱᑦᑕᑦᑎᑦᑎᑦ	ᐱᑦᑕᑦᑎᑦᑎᑦ ᐱᑦᑕᑦᑎᑦᑎᑦ	ᐱᑦᑕᑦᑎᑦᑎᑦ ᐱᑦᑕᑦᑎᑦᑎᑦ
	2003-2004 Main Estimates (\$000)	2002-2003 Revised Estimates (\$000)	2002-2003 Main Estimates (\$000)
ᑕᑦᑎᑦᑎᑦ ᐱᑦᑕᑦᑎᑦᑎᑦ Grants and Contributions			
ᐱᑦᑕᑦᑎᑦᑎᑦ			
ᐱᑦᑕᑦᑎᑦᑎᑦ ᐱᑦᑕᑦᑎᑦᑎᑦ ᐱᑦᑕᑦᑎᑦᑎᑦ ᐱᑦᑕᑦᑎᑦᑎᑦ ᐱᑦᑕᑦᑎᑦᑎᑦ ᐱᑦᑕᑦᑎᑦᑎᑦ ᐱᑦᑕᑦᑎᑦᑎᑦ ᐱᑦᑕᑦᑎᑦᑎᑦ ᐱᑦᑕᑦᑎᑦᑎᑦ ᐱᑦᑕᑦᑎᑦᑎᑦ ᐱᑦᑕᑦᑎᑦᑎᑦ ᐱᑦᑕᑦᑎᑦᑎᑦ ᐱᑦᑕᑦᑎᑦᑎᑦ ᐱᑦᑕᑦᑎᑦᑎᑦ	2,996	2,036	2,036
Shelter Programs Funding to organizations to provide a shelter facility to accommodate various individuals with special needs such as women's shelter, elders' facilities and Iqaluit Psychiatric Facility.			
ᐱᑦᑕᑦᑎᑦᑎᑦ ᐱᑦᑕᑦᑎᑦᑎᑦ ᐱᑦᑕᑦᑎᑦᑎᑦ ᐱᑦᑕᑦᑎᑦᑎᑦ ᐱᑦᑕᑦᑎᑦᑎᑦ ᐱᑦᑕᑦᑎᑦᑎᑦ ᐱᑦᑕᑦᑎᑦᑎᑦ ᐱᑦᑕᑦᑎᑦᑎᑦ ᐱᑦᑕᑦᑎᑦᑎᑦ ᐱᑦᑕᑦᑎᑦᑎᑦ ᐱᑦᑕᑦᑎᑦᑎᑦ ᐱᑦᑕᑦᑎᑦᑎᑦ	949	949	949
Alcohol and Drug Programs Funding to Nunavut municipalities to provide Alcohol and Drug Treatment Programs.			
ᐱᑦᑕᑦᑎᑦᑎᑦ ᐱᑦᑕᑦᑎᑦᑎᑦ ᐱᑦᑕᑦᑎᑦᑎᑦ ᐱᑦᑕᑦᑎᑦᑎᑦ ᐱᑦᑕᑦᑎᑦᑎᑦ ᐱᑦᑕᑦᑎᑦᑎᑦ ᐱᑦᑕᑦᑎᑦᑎᑦ ᐱᑦᑕᑦᑎᑦᑎᑦ ᐱᑦᑕᑦᑎᑦᑎᑦ ᐱᑦᑕᑦᑎᑦᑎᑦ ᐱᑦᑕᑦᑎᑦᑎᑦ ᐱᑦᑕᑦᑎᑦᑎᑦ	-	97	97
Suicide Prevention Funding support for the planning and development of a national conference on suicide prevention and intervention.			
ᐱᑦᑕᑦᑎᑦᑎᑦ ᐱᑦᑕᑦᑎᑦᑎᑦ	3,945	3,082	3,082
ᐱᑦᑕᑦᑎᑦᑎᑦ ᐱᑦᑕᑦᑎᑦᑎᑦ Total Grants and Contributions	3,945	3,082	3,082





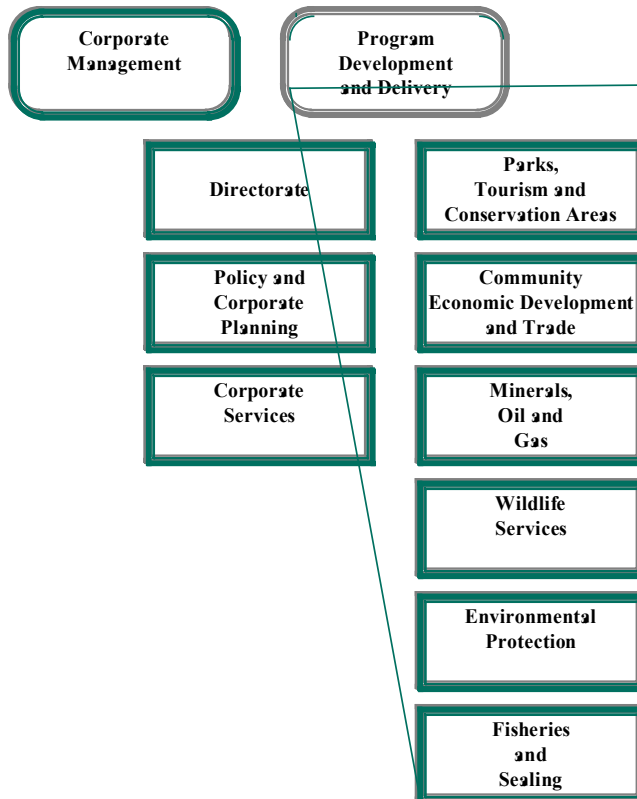
**SUSTAINABLE
DEVELOPMENT**

Olayuk Akesuk
Minister

Alex Campbell
Deputy Minister

Rosemary Keenainak
Assistant Deputy Minister

ACCOUNTING STRUCTURE CHART



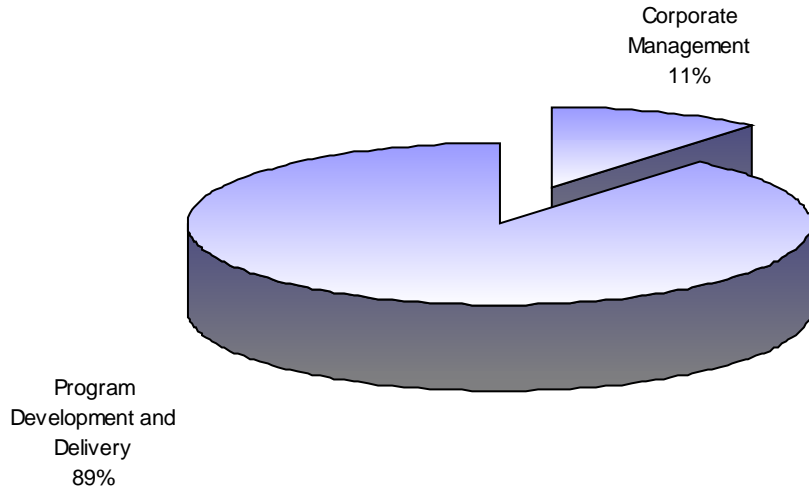
-
-
-

MISSION

The Department of Sustainable Development's Mission is to:

- ensure the wise use and protection of the natural environment through monitoring, science, and Inuit Qaujimanituqangi so that it sustains us in the present and for all future generations;
- support people through initiatives that stimulate and strengthen the inter-relationships among the economy, environment and society in order to build healthy communities; and
- provide leadership to reconcile competing public values and purposes over resource use.

DETAIL OF EXPENDITURES



ᐱᑦᐱᑦᐱᑦᐱᑦᐱᑦᐱᑦ	DESCRIPTION	ᐱᑦᐱᑦᐱᑦᐱᑦᐱᑦᐱᑦ		
		2003-2004 Main Estimates (\$000)	2002-2003 Revised Estimates (\$000)	2002-2003 Main Estimates (\$000)
ᐱᑦᐱᑦᐱᑦᐱᑦᐱᑦᐱᑦᐱᑦ	Compensation and Benefits	12,584	12,364	12,364
	Grants and Contributions	16,379	16,065	15,884
	Travel and Transportation	2,153	2,372	2,426
	Materials and Supplies	982	825	821
	Purchased Services	488	680	704
	Utilities	15	10	10
	Contract Services	2,432	2,601	2,711
	Fees and Payments	87	298	295
	Other Expenses	182	237	237
ᐱᑦᐱᑦᐱᑦᐱᑦᐱᑦᐱᑦᐱᑦᐱᑦ	Total Operations & Maintenance	35,302	35,452	35,452
ᐱᑦᐱᑦᐱᑦᐱᑦᐱᑦᐱᑦᐱᑦ	Total Capital	2,520	4,396	2,470
ᐱᑦᐱᑦᐱᑦᐱᑦᐱᑦᐱᑦᐱᑦ	Total Expenditures	37,822	39,848	37,922

CORPORATE MANAGEMENT

The Corporate Management branch consists of the Directorate, the Policy and Corporate Planning Division, and the Corporate Services divisions. The Directorate is responsible for the overall management and direction of the Department. The Policy and Corporate Planning Division is responsible for undertaking research that will lead to policy and legislative reform in the Department. Corporate Services is responsible for financial management and administration, staff development and the delivery of financial/controllership support/training services.

		ᑭᓂᑦᐱᓄᓂᓄᓂᓄᓂᓄᓂᓄᓂ		
		2003-2004	2002-2003	2002-2003
		Main	Revised	Main
		Estimates	Estimates	Estimates
		(\$000)	(\$000)	(\$000)
ᑭᓂᑦᐱᓄᓂᓄᓂᓄᓂᓄᓂᓄᓂᓄᓂ	DESCRIPTION			
	Compensation and Benefits	3,090	3,041	3,041
	Grants and Contributions	-	-	-
	Travel and Transportation	257	323	323
	Materials and Supplies	106	111	111
	Purchased Services	122	132	132
	Utilities	-	-	-
	Contract Services	224	407	407
	Fees and Payments	25	32	32
	Other Expenses	50	69	69
ᑭᓂᑦᐱᓄᓂᓄᓂᓄᓂᓄᓂᓄᓂᓄᓂᓄᓂᓄᓂᓄᓂ	Total Operations & Maintenance	3,874	4,115	4,115
ᑭᓂᑦᐱᓄᓂᓄᓂᓄᓂᓄᓂᓄᓂᓄᓂᓄᓂᓄᓂ	Total Capital	-	-	-
ᑭᓂᑦᐱᓄᓂᓄᓂᓄᓂᓄᓂᓄᓂᓄᓂᓄᓂᓄᓂᓄᓂ	Total Expenditures	3,874	4,115	4,115

PROGRAM DEVELOPMENT AND DELIVERY

The Program Development and Delivery Branch, formerly called the Sustainable Development Branch, is the operational arm of the Department and is comprised of six divisions: Parks, Tourism and Conservation Areas; Community Economic Development and Trade; Minerals, Oils and Gas; Wildlife Services; Environmental Protection Services; and Fisheries and Sealing.

The branch is responsible for development and delivery of programs in the areas of land, wildlife and resource management; parks and environmental protection; and economic capacity in Nunavut. This support is to people, stakeholder organizations and the private sector.

ᐱᑦᑲᑦᑲᑦᑲᑦᑲᑦᑲᑦᑲᑦ	DESCRIPTION	ᐱᑦᑲᑦᑲᑦᑲᑦᑲᑦᑲᑦᑲᑦ		
		2003-2004 Main Estimates (\$000)	2002-2003 Revised Estimates (\$000)	2002-2003 Main Estimates (\$000)
	Compensation and Benefits	9,494	9,323	9,323
	Grants and Contributions	16,379	16,065	15,884
	Travel and Transportation	1,896	2,049	2,103
	Materials and Supplies	876	714	710
	Purchased Services	366	548	572
	Utilities	15	10	10
	Contract Services	2,208	2,194	2,304
	Fees and Payments	62	266	263
	Other Expenses	132	168	168
	Total Operations & Maintenance	31,428	31,337	31,337
	Total Capital	2,520	4,396	2,470
	Total Expenditures	33,948	35,733	33,807

PROGRAM DEVELOPMENT AND DELIVERY

ᑲᑲᑦᑲᑦᑲᑦᑲᑦ ᐱᑦᑲᑦᑲᑦᑲᑦ Grants and Contributions	ᑲᑲᑦᑲᑦᑲᑦᑲᑦ ᑲᑲᑦᑲᑦᑲᑦᑲᑦ		
	2003-2004 Main Estimates (\$000)	2002-2003 Revised Estimates (\$000)	2002-2003 Main Estimates (\$000)
ᑲᑲᑦᑲᑦᑲᑦᑲᑦ <i>Grants</i> ᑲᑲᑦᑲᑦᑲᑦᑲᑦ ᑲᑲᑦᑲᑦᑲᑦᑲᑦ ᑲᑲᑦᑲᑦᑲᑦᑲᑦ			
Grants to Small Businesses Grants to offset costs associated with establishing or maintaining a business in Nunavut (amount less than \$5,000). Eligible businesses include those with less than \$500,000 in gross sales, artists or craftpersons who make all or part of their income through the sale of products they produce, or licensed or otherwise authorized renewable resource harvesters who earn all or part of their income from the sale of products they harvest. [This program has been reprofiled along with the Business Development Fund (Contributions) to form the new "Contributions to Business Development"]	-	330	330
ᑲᑲᑦᑲᑦᑲᑦᑲᑦ ᐱᑦᑲᑦᑲᑦᑲᑦᑲᑦ ᐱᑦᑲᑦᑲᑦᑲᑦᑲᑦ			
Fur Price Program Grants to harvesters in the form of a guaranteed minimum price for selected species of fur. Individuals must be residents of Nunavut and hold a valid Nunavut general hunting or trapping license.	70	120	120

PROGRAM DEVELOPMENT AND DELIVERY

ገጽ ፩

PROGRAM DEVELOPMENT AND DELIVERY

	ᓂᑖᑖᑖᑖᑖ ᐃᑖᑖᑖᑖᑖᑖ		
Grants and Contributions	2003-2004 Main Estimates (\$000)	2002-2003 Revised Estimates (\$000)	2002-2003 Main Estimates (\$000)
ᐅᐅᐅᑖᑖᑖᑖᑖ ᐅᑖᑖᑖᑖᑖᑖᑖᑖᑖᑖᑖ ᑖᑖᑖᑖᑖᑖᑖᑖᑖ	60	60	60
Arctic Energy Alliance Contribution to the Arctic Energy Alliance for public education in energy management in Nunavut. ᓂᓂᓂᓂᓂ ᐃᑖᑖᑖᑖᑖᑖᑖᑖᑖᑖᑖ ᓂᑖᑖᑖᑖᑖᑖᑖᑖ			

PROGRAM DEVELOPMENT AND DELIVERY

ᐅᓂᐅᓄᓗᐅᓗ ᐱᓕᓚᓗ ᐃᓂᓄᓗᐅᓗ Grants and Contributions	ᐅᓂᐅᓄᓗᐅᓗ ᐱᓕᓚᓗᐅᓄᓚ 2003-2004 Main Estimates (\$000)	2002-2003 Revised Estimates (\$000)	2002-2003 Main Estimates (\$000)
---	---	--	---

ᐃᓂᓄᓗᐅᓗ - ᐱᓕᓚᓖᓂᓚᓄᓗᐅᓗ (ᓂᓄᓗᐅᓗᓂᓗ) Contributions - Partnerships (cont'd)

ᐅᓄᓗᐅᓄᓗᐅᓄᓚᓄᓗ ᐃᓂᓄᓗᐅᓄᓚᓄᓗ

Prospectors' Assistance Program	150	150	150
Contributions to Nunavut residents holding a valid prospecting license who require financial assistance to carry out prospecting activities.			

ᓂᓂᓄᓗᐅᓄᓚ ᓄᓂᓄᓗᐅᓄᓚᓄᓗ ᐱᓕᓚᓗᐅᓄᓚᓄᓗ ᐅᓂᐅᓄᓗᐅᓄᓚᓄᓗ

Nunavut Tourism Core Funding	2,364	2,364	2,364
Contribution made to core program funding for Nunavut's tourism industry association which delivers the Department's programs including marketing, information services, product development and promotion.			

ᓂᓂᓄᓗᐅᓄᓚ ᓄᓄᓄᓗᐅᓄᓚᓄᓗ ᐅᓄᓄᓗ

Community Futures	700	700	700
Contributions made to three regionally based not-for-profit Community Futures Organizations to provide loans under \$75,000 to small community based businesses. The core activities of these organizations include both technical and financial support to small business start-ups, promotion of sustained local economies as well as proactive efforts to identify local opportunities for community development.			

PROGRAM DEVELOPMENT AND DELIVERY

<p> ᐃᐳᐳᐳᐳᐳ ᐳᐳᐳ ᐳᐳᐳᐳᐳ Grants and Contributions </p>	<p> ᐳᐳᐳᐳᐳᐳ ᐳᐳᐳᐳᐳᐳᐳ 2003-2004 Main Estimates (\$000) </p>	<p> 2002-2003 Revised Estimates (\$000) </p>	<p> 2002-2003 Main Estimates (\$000) </p>
<p> ᐳᐳᐳᐳᐳ - ᐱᐸᐱᐳᐳᐳᐳᐳᐳ (ᐳᐳᐳᐳᐳ) C ᐳᐳᐳᐳ ᐳᐳᐳᐳᐳᐳᐳᐳ ᐳᐳᐳᐳᐳᐳᐳ ᐳᐳᐳᐳᐳᐳᐳᐳᐳ </p>			
	200	200	200
<p> Nunavut Arts & Crafts Association (NACA) Contribution made to core funding of NACA, an association of arts & crafts producers which delivers services to artists in Nunavut. </p>			
<p>ᐳᐳᐳᐳ ᐳᐳᐳᐳᐳᐳᐳᐳ ᐳᐳᐳᐳᐳᐳᐳᐳ ᐳᐳᐳᐳᐳᐳᐳᐳᐳᐳ</p>			
	10	10	10
<p> Canadian Cooperative Wildlife Centre Contribution for diagnosis of tissue samples, advice and updates on disease issues/research. </p>			
<p>ᐳᐳᐳᐳᐳᐳᐳᐳᐳᐳ ᐳᐳᐳᐳᐳᐳᐳᐳ ᐳᐳᐳᐳᐳᐳᐳᐳᐳᐳ ᐳᐳᐳᐳᐳᐳᐳᐳᐳᐳ</p>			
	-	35	35
<p> Bathurst Caribou Management Plan A co-management agreement with Government of Nunavut and Indian and Northern Affairs Canada to develop a management plan for one of Nunavut's largest caribou herds. </p>			
<p>ᐳᐳᐳᐳᐳ ᐳᐳᐳᐳᐳᐳᐳᐳᐳᐳ ᐳᐳᐳᐳᐳ ᐱᐸᐳᐳᐳᐳᐳᐳᐳᐳᐳᐳᐳ</p>			
	100	100	100
<p> Nunavut Economic Developers Association Contribution to assist in the co-ordination of relevant training and education programs for Community Economic Development Officers. </p>			

PROGRAM DEVELOPMENT AND DELIVERY

Grants and Contributions	ᐃᑉᐃᑉᐃᑉᐃᑉ ᐃᑉᐃᑉᐃᑉᐃᑉ 2003-2004 Main Estimates (\$000)	2002-2003 Revised Estimates (\$000)	2002-2003 Main Estimates (\$000)
ᐱᑉᐃᑉᐃᑉᐃᑉᐃᑉ ᐃᑉᐃᑉᐃᑉᐃᑉ ᐃᑉᐃᑉᐃᑉ			
Fur Council of Canada Contribution towards the annual American Fur and Fashion Exposition held in Montreal. This is an excellent marketing/promotional event held annually in support of Nunavut's Fur Industry.	-	24	24
ᐱᑉᐃᑉᐃᑉᐃᑉᐃᑉ ᐃᑉᐃᑉᐃᑉᐃᑉᐃᑉᐃᑉᐃᑉᐃᑉ			
Job Corps Contributions toward a Youth Employment Program in Nunavut. To provide opportunities for young people to participate in the economic life of their communities.	-	90	90
Community Economic Development Officers C	2,400	1,960	1,960

PROGRAM DEVELOPMENT AND DELIVERY

Grants and Contributions

የግብርና ስራ
ለግብርና ስራ
2003-2004 2002-2003 2002-2003
M

PROGRAM DEVELOPMENT AND DELIVERY

ᑭᑦ

PROGRAM DEVELOPMENT AND DELIVERY

ᐅᓂᐅᓂᓂᓂᓂᖅ ᐃᓂᐅᓂᓂᓂᖅ Grants and Contributions	ᐅᓂᐅᓂᓂᓂᓂᖅ ᐃᐅᓂᓂᓂᓂᓂᖅ 2003-2004 Main Estimates (\$000)	2002-2003	2002-2003
		Revised Estimates (\$000)	Main Estimates (\$000)
ᐃᓂᐅᓂᓂᓂᓂᖅ-ᐃᐃᐱᖅᐱᓕᓂᓂᖅ Contributions - Corporations ᓇᓂᐅᓂᓂᓂᓂᖅ ᐱᓕᓕᓂᓂᓂᓂᓂᓂᓂᖅ ᐱᓕᓂᓂᓂᓂᓂᓂᖅ ᐃᐃᐱᖅᐱᓕᓂᓂᖅ			
	3,465	3,465	3,465
Nunavut Development Corporation Contributions to support community-based businesses with a commitment to employment creation, economic diversification and stability and the development of economic opportunities which otherwise would not attract private investment.			
ᓇᓂᐅᓂᓂᓂᓂᓂᖅ ᓇᓂᐅᓂᓂᓂᓂᓂᓂᖅ ᐃᐅᓂᓂᓂᓂᓂᓂᖅ ᐃᐃᐱᖅᐱᓕᓂᓂᖅ			
	690	600	600
Nunavut Business Credit Corporation A contribution to provide operations and maintenance funding to the Business Credit Corporation.			
ᓇᓂᐅᓂᓂᓂᓂᓂᖅ ᐃᓂᐅᓂᓂᓂᓂᓂᓂᖅ Total Contributions - Corporations	4,155	4,065	4,065
ᓇᓂᐅᓂᓂᓂᓂᓂᓂᖅ ᐃᓂᐅᓂᓂᓂᓂᓂᓂᓂᖅ Total Contributions	16,269	15,575	15,394
ᓇᓂᐅᓂᓂᓂᓂᓂᓂᖅ ᐅᓂᐅᓂᓂᓂᓂᓂᖅ ᐃᓂᐅᓂᓂᓂᓂᓂᖅ Total Grants and Contributions	16,379	16,065	15,884

FUR MARKETING SERVICE REVOLVING FUND

To provide working capital for the operation of a fur advance system. Nunavut harvesters receive interest free advances on fur sent to southern auction houses.

	ᐃᐃᓐᓇᓐᓇ ᐃᐅᓐᓇᓐᓇᓐᓇ	2002-2003	2002-2003
	2003-2004	2002-2003	2002-2003
	Main	Revised	Main
	Estimates	Estimates	Estimates
	(\$000)	(\$000)	(\$000)
Authorized Limit	900	900	900
Operating Results			
Opening Accounts Receivable	154	154	154
Advances to Trappers	400	350	350
Receipts of Fur Account Loans	(400)	(350)	(350)
Closing Accounts Receivable	154	154	154

ልማት ለማረጋገጥ
ለሥራ ለማድረግ የሚችል

Sustainable Development

DISTRIBUTION OF OPERATIONS AND MAINTENANCE BUDGET

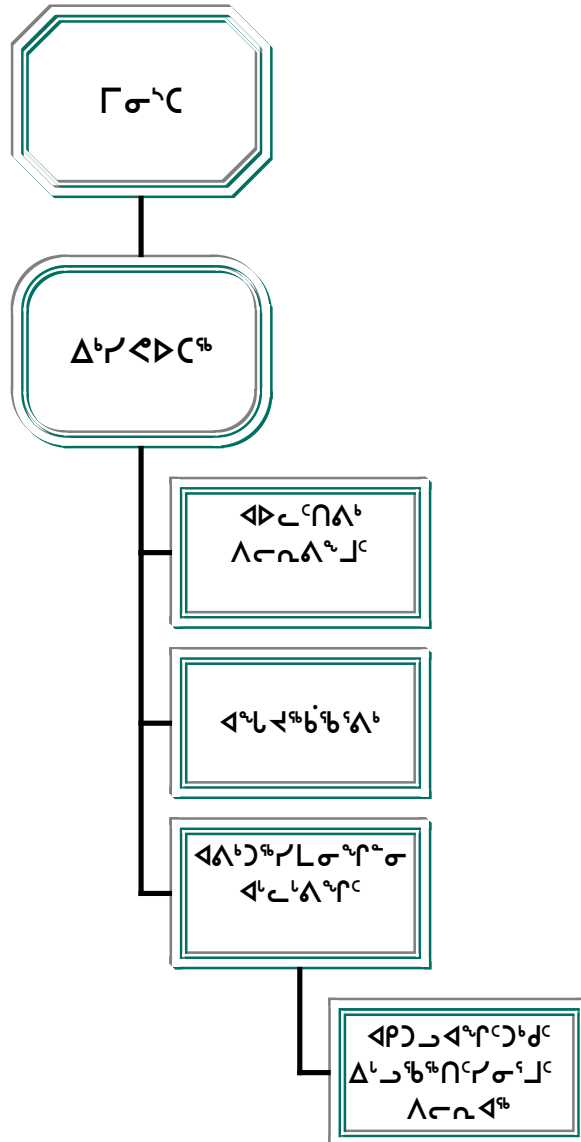
	ᐃᐱᑦᐱᑦᐱᑦᐱᑦ Headquarters (\$000)	ᐱᑦᐱᑦᐱᑦᐱᑦ Qikiqtaaluk (\$000)	ᐱᑦᐱᑦᐱᑦ Kivalliq (\$000)	ᐱᑦᐱᑦᐱᑦ Kitikmeot (\$000)	ᐱᑦᐱᑦᐱᑦ Total (\$000)
Compensation and Benefits	6,542	2,477	1,761	1,804	12,584
Grants and Contributions	9,410	3,252	2,225	1,492	16,379
Travel and Transportation	1,431	245	250	227	2,153
Materials and Supplies	551	186	133	112	982
Purchased Services	383	35	35	35	488
Utilities	15	-	-	-	15
Contract Services	2,022	50	310	50	2,432
Fees and Payments	57	10	10	10	87
Other Expenses	108	30	22	22	182
ᐱᑦᐱᑦᐱᑦ ᐃᑦᐱᑦᐱᑦᐱᑦ ᐱᑦᐱᑦᐱᑦᐱᑦ	20,519	6,285	4,746	3,752	35,302





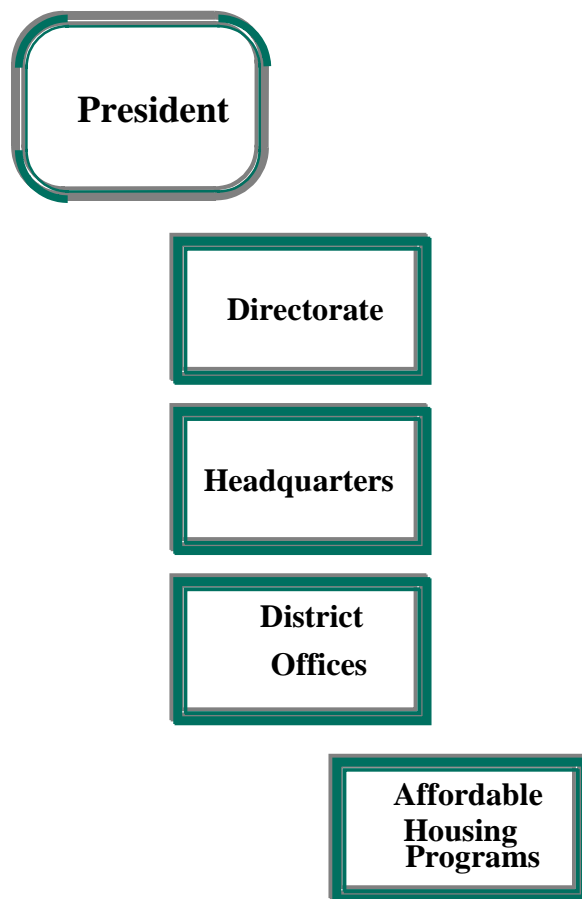


ᓄᓇᓖᓴ ᓐᓐ ᓄᓇᓖᓴ ᓐᓐ



Kelvin Ng

Pamela Hine



ᐃᓄᓂᓐᓐᓐᓐᓐ ᐃᓂᓐᓐᓐᓐᓐ ᐃᓂᓐᓐᓐᓐᓐᓐᓐ ᐃᓂᓐᓐᓐᓐᓐ -
ᓄᓇᓂᓐ ᓂᓐᓐᓐᓐᓐᓐ ᓐᓐᓐᓐᓐ¹

	ᐃᓄᓂᓐᓐᓐᓐᓐ Headquarters (\$000)	ᓐᓐᓐᓐᓐᓐ Qikiqtaaluk (\$000)	ᓐᓐᓐᓐ Kivalliq (\$000)	ᓐᓐᓐᓐᓐᓐ Kitikmeot (\$000)	ᓂᓐᓐᓐᓐ Total (\$000)
ᐃᓂᓐᓐᓐᓐᓐᓐ ᐃᓐᓐᓐᓐᓐ ᐃᓂᓐᓐᓐᓐᓐ	-	-	-	-	-
Compensation and Benefits	-	-	-	-	-
ᓂᓐᓐᓐᓐᓐ ᐃᓄᓂᓐ ᐃᓂᓐᓐᓐᓐ	7,601	39,197	18,107	12,611	77,516
Grants and Contributions	7,601	39,197	18,107	12,611	77,516
ᓂᓐᓐᓐᓐᓐᓐᓐ ᐃᓐᓐᓐᓐᓐᓐ	-	-	-	-	-
Travel and Transportation	-	-	-	-	-
ᐃᓐᓐᓐᓐᓐᓐᓐ ᓐᓐᓐᓐᓐᓐ	-	-	-	-	-
Materials and Supplies	-	-	-	-	-
ᓂᓐᓐᓐᓐᓐᓐᓐ ᐃᓐᓐᓐᓐᓐ	-	-	-	-	-
Purchased Services	-	-	-	-	-
ᓐᓐᓐᓐᓐᓐᓐ	-	-	-	-	-
Utilities	-	-	-	-	-
ᓂᓐᓐᓐᓐᓐ ᐃᓐᓐᓐᓐᓐ	-	-	-	-	-
Contract Services	-	-	-	-	-
ᐃᓐᓐᓐᓐᓐᓐ ᐃᓐᓐᓐᓐᓐᓐᓐ	-	-	-	-	-
Fees and Payments	-	-	-	-	-
ᐃᓐᓐᓐᓐᓐ ᐃᓐᓐᓐᓐᓐᓐ	-	-	-	-	-
Other Expenses	-	-	-	-	-
ᓂᓐᓐᓐᓐᓐ ᐃᓂᓐᓐᓐᓐᓐ ᐃᓂᓐᓐᓐᓐᓐᓐᓐ	7,601	39,197	18,107	12,611	77,516
Total Operations & Maintenance	7,601	39,197	18,107	12,611	77,516

¹ ᓂᓐᓐᓐᓐᓐᓐᓐ ᐃᓂᓐᓐᓐᓐᓐ ᐃᓂᓐᓐᓐᓐᓐ, ᐃᓂᓐᓐᓐᓐᓐᓐ ᓐᓐᓐᓐᓐ ᐃᓂᓐᓐᓐᓐᓐᓐᓐ ᓂᓐᓐᓐᓐᓐᓐᓐ ᓂᓐᓐᓐᓐᓐᓐ ᓂᓐᓐᓐᓐᓐᓐ ᓂᓐᓐᓐᓐᓐᓐᓐ



ሰፊ ጥናት ለግብርና ግብር 2003-2004



APPENDICES TO THE
MAIN ESTIMATES 200



GLOSSARY

Appropriation	A budget approved by the Legislative Assembly that permits obligations to be incurred and expenditures to be made. Appropriations are usually made for fixed amounts and are typically for a period of one year.
Asset	An economic resource controlled by the Government from which future economic benefits may be obtained. Assets can include physical infrastructure and amounts due to the Government by outside parties.
Branch	The first (highest) level of sub-division within a Department.
Business Plan	Describes an organization's (department's) purpose, "Mission", and its key functions, "Core Business".
Budget	An estimate of proposed expenditures for a given period and the proposed means (revenue estimates) of financing those expenditures.
Capital Asset	Physical property used in the operations of the government, and not intended for sale. Capital assets will have a useful life that extends over more than one fiscal period.
Capital Expenditures	Government Expenditures for the purchase or construction of a capital asset; an outlay that increases the expected useful life of an existing capital asset; planning and study costs related to capital asset acquisition or construction; or grants and contributions to other agencies for the purpose of capital acquisition or construction.
Contribution	A conditional transfer of appropriated funds to a public agency, community government or other organization that is accountable to the government for the use of the funds and fulfillment of the objectives for which the funding is provided.
Control Object	Each vote category of appropriations are further broken down into control objects. The 2003-2004 Main Estimates are presented at the following control object levels: <ul style="list-style-type: none"> - Compensation and Benefits - Grants and Contributions
Department	Organizational entity established by Cabinet to deliver programs and services within a specified mandate.
Department Summary	Describes the Mission or purpose, and summarizes the Detail of Expenditure for each Department.
Distribution of Budget	The anticipated regional allocation of departmental budgets.

GLOSSARY

Estimates	The estimated expenditures approved by the Legislative Assembly, and forecasted revenues, for all government departments.
Expenditure	Funds paid or payable to acquire goods and services or a capital asset.
Financial Management Board	The Financial Management Board (FMB) is a committee of the Executive Council consisting of all members of the Executive Council that is responsible for the financial management and administration of the Government of Nunavut.
Fiscal Year	A consecutive twelve-month period designated as the reporting year of a government or organization. The Government of Nunavut’s fiscal year starts April 1 and ends March 31 of the following calendar year.
Grant	An unconditional transfer of appropriated funds to a public agency, group or organization for which the recipient is, with the exception of meeting the eligibility criteria for the grant, not accountable to the government.
Infrastructure	The permanent facilities and organization structure in place for the purpose of delivering government programs.
Program	A major government function designed to achieve the specified objectives of a policy that has been authorized by the Legislative Assembly. Also referred to as department.
Regions	Geographical sub-divisions of Nunavut for administrative purposes.
Standard Object	Each vote category of appropriations are further broken down into standard objects. The 2003-2004 Main Estimates are presented at the following standard object levels: <ul style="list-style-type: none"> – Travel and Transportation – Materials and Supplies – Purchased Services – Utilities – Contract Services – Fees and Payment – Other Expenses

Vote	A category of expenditure relating to the operations and maintenance, vote 2 – Capital	Vote 1 –
------	--	----------



BUSINESS PLAN DEVELOPMENT

- The 2003-2004 Business Plans highlight GN programs in the core business section.
- Appendix A of each plan provides a link from the program structure of core business to the organizational structure used in the Main Estimates.
- Business plans focus primarily on vote 1, Operations and Maintenance, expenditures.

BUDGET ADDRESS DEVELOPMENT

- Finance drafts the text of the address.
- The address outlines trends, anticipated developments, and government's action plan for the upcoming fiscal year.
- The address highlights new program initiatives, the impact of government activities, economic information, and fiscal details.

PRESENTATION TO THE LEGISLATIVE ASSEMBLY

- Standing Committees meet prior to the presentation of the Main Estimates/Capital Estimates. Committees review draft business plans and the proposed budget.
- Standing committees prepare a report to be presented to the Legislature.
- After the Budget Address, the Main Estimates are publicly released.
- The Capital Estimates for the following fiscal year are tabled in the fall.

SUPPLEMENTARY ESTIMATES

- Supplementary Estimates are required to authorize increased departmental spending.
- Supplementary Estimates must be approved by the Legislature.
- Supplementary Estimates include all Special Warrants, which have been signed by the Commissioner to provide advanced spending authority for funding requirements that meet the criteria set out in the Financial Administration Act.

RESULTS REPORTING / VARIANCE REPORTING

- Departments are required to regularly report their fiscal situation to the FMB. This includes variance reports on a year-to-date basis for expenditures and revenues.
- At the end of the fiscal year departments are required to report to the Legislature.

