



UPDATE
COSEWIC STATUS REPORT
ON THE
POLAR BEAR
(*Ursus maritimus*)

Philip D. McLoughlin¹
Mitch Taylor²
Martha Dowsley³

¹Department of Biology, University of Saskatchewan,
112 Science Place, Saskatoon, SK S7N 5E2

²Wildlife Research Section, Department of Environment,
P.O. Box 209, Igloolik, NU X0A 0L0

³806-3440 Durocher, Montréal, QC H2X 2E2

2007
(DRAFT)

Status report, no. 32

McLoughlin, Philip D., M. K. Taylor, and Martha Dowsley. 2007. Update, COSEWIC status report on the polar bear (*Ursus maritimus*) prepared for the Committee on the Status of Endangered Wildlife in Canada. Government of Nunavut, Department of Environment, Status report: 32, Iqaluit, 59 pp.

Update COSEWIC Status Report

on the

Polar Bear *Ursus maritimus*

prepared for

COMMITTEE ON THE STATUS OF ENDANGERED WILDLIFE IN CANADA

By

Philip D. McLoughlin¹, Mitch Taylor², and Martha Dowsley³

¹Department of Biology, University of Saskatchewan, 112 Science Place,
Saskatoon, SK S7N 5E2

²Department of Environment, Government of Nunavut, P.O. Box 209,
Igloolik, NU X0A 0L0

³806-3440 Durocher, Montréal, QB H2X 2E2

DRAFT

Funding provided by Environment Canada

Submitted July 18, 2007

COSEWIC Assessment and Status Report

on the

Polar Bear *Ursus maritimus*

in Canada



STATUS 2007

Revised Draft

July 18, 2007

COSEWIC COMMITTEE ON THE STATUS OF ENDANGERED WILDLIFE IN CANADA
COSEPAC COMITÉ SUR LA SITUATION DES ESPÈCES EN PÉRIL AU CANADA

COSEWIC status reports are working documents used in assigning the status of wildlife species suspected of being at risk. This report may be cited as follows:

Please note: Persons wishing to cite data in the report should refer to the report (and cite the author[s]); persons wishing to cite the COSEWIC status will refer to the assessment (and cite COSEWIC). A production note will be provided if additional information on the status report history is required.

COSEWIC. 2007. Draft COSEWIC assessment and status report on the polar bear *Ursus maritimus* in Canada. Committee on the Status of Endangered Wildlife in Canada, Ottawa. xi + 59 pp.

Previous Reports:

COSEWIC. 2002. COSEWIC assessment and update status report on the polar bear *Ursus maritimus* in Canada. Committee on the Status of Endangered Wildlife in Canada, Ottawa. vi + 29 pp.

Stirling, I., and M.K. Taylor. 1999. Update COSEWIC status report on the polar bear *Ursus maritimus* in Canada. Committee on the Status of Endangered Wildlife in Canada, Ottawa. 27 pp.

Stirling, I. 1991. Update COSEWIC status report on the polar bear *Ursus maritimus* in Canada. Committee on the Status of Endangered Wildlife in Canada, Ottawa. 24 pp.

Stirling, I. 1986. COSEWIC status report on the polar bear *Ursus maritimus* in Canada. Committee on the Status of Endangered Wildlife in Canada, Ottawa. 20 pp.

For additional copies contact:

COSEWIC Secretariat
c/o Canadian Wildlife Service
Environment Canada
Ottawa, ON K1A 0H3

Tel.: (819) 997-4991 / (819) 953-3215 Fax: (819) 994-3684

E-mail: COSEWIC/COSEPAC@ec.gc.ca

<http://www.cosewic.gc.ca>

Également disponible en français sous le titre Évaluation et Rapport de situation du COSEPAC sur l'ours blanc (*Ursus maritimus*) au Canada – Mise à jour.

Cover Photograph: Polar bear — François Messier, Saskatoon, Saskatchewan.

©Minister of Public Works and Government Services Canada 2007



COSEWIC
Assessment Summary

Assessment Summary – July 2007 (DRAFT ONLY)

English name Polar bear

French name L'ours blanc

Inuktitut name Nanuq, Nanuk

Cree name Wapusk

Latin name *Ursus maritimus* (Phipps 1774)

Status _____

Reason for designation The polar bear is an apex predator in the arctic marine ecosystem. The species is of great cultural significance to the Canadian people, and is also important spiritually and economically to northern native peoples. Movements and genetic interchange among previously identified subpopulations of polar bears are sufficiently high to conclude that there is only a single Designatable Unit for status assessment in Canada; however, it remains useful to refer to trends in the population by subpopulation given the regional specifics of harvest management and current and projected impacts of climate warming. Data suggest that 5 of 13 subpopulations (Western Hudson Bay, Southern Beaufort Sea, Baffin Bay, Kane Basin, and Norwegian Bay), representing approximately 28% of the total population of 15,500 polar bears shared by Canada and its immediate neighbours (Greenland and the United States), have a high risk of population decline in the immediate future. Four subpopulations are more likely to be increasing rather than decreasing in size at the present time (comprising 29% of the total population). Trend cannot be projected for remaining subpopulations (43% of the total population) due to lack of recent estimates on survival, reproduction, and/or abundance. Current declines are due to overharvest and effects of climate change. Long-term population trends will ultimately be determined by changes in extent and types of sea ice associated with a warming climate in the Arctic.

Canadian Occurrence Yukon, Northwest Territories, Nunavut, Manitoba, Ontario, Québec, Newfoundland and Labrador.

Status history Designated Not at Risk in April, 1986. Status re-examined and uplisted to Special Concern in April, 1991. Confirmed as Special Concern in April, 1999 and in November, 2002. In May, 2008, status re-examined and recommended as _____.



COSEWIC Executive Summary

Species information

The polar bear (*Ursus maritimus* Phipps) evolved within less than 400,000 years to occupy the niche of hunting seals from a sea-ice platform. Many of the physical traits of polar bears can be viewed as adaptations to hunting arctic seals.

Distribution

Polar bears are a circumpolar species that occur in Canada from Yukon to Newfoundland and Labrador, and from northern Ellesmere Island south to James Bay. The population is distributed among 13 subpopulations with some evidence for genetic separation between them; however, subpopulations are not deemed to be evolutionarily significant units and interchange among subpopulations remains sufficient for status to be assigned to the species in Canada as a single Designatable Unit. The length and frequency of seasonal movements undertaken by bears within each subpopulation varies with the size of the geographic area occupied, the annual pattern of freezing and break-up of sea ice, and availability of features such as land masses, multi-year ice, and polynyas.

Habitat

The productivity of polar bear habitat is closely linked to the physical attributes of sea ice (type and distribution) and the density and distribution of ice-dependent seals, especially ringed seals (*Pusa hispida*). From early winter until break-up of annual sea ice in spring, polar bears are dispersed predominantly over sea ice along the coast. They may range >200 km offshore. Maternal denning sites are generally located on land near the coast, being excavated in snowdrifts and in some places frozen ground. Offshore maternal dens on multi-year ice floes are also known to occur, particularly in the western Canadian Arctic.

Biology

Reproductive rates vary among subpopulations of polar bears but all are relatively low. Females reach sexual maturity at 4–6 years and have litters of no more than 1–2 cubs approximately every 3 years. Most males generally breed at 8–10 years. Few polar bears live longer than 25 years.

Population sizes and trends

Western science and Aboriginal Traditional Knowledge (ATK) suggests that 5 of 13 subpopulations (Western Hudson Bay, Southern Beaufort Sea, Baffin Bay, Kane Basin, and Norwegian Bay), representing approximately 28% of the total population of polar

bears (15,500 bears) shared by Canada and its immediate neighbours (Greenland and the United States), have a high risk of future population decline. Polar bears in Western Hudson Bay are likely declining because of continued unsustainable human-caused mortality which is additive to higher mortality linked to climate warming and earlier break-up of sea ice in spring. Although the evidence is not as strong as for the subpopulation of Western Hudson Bay, a similar situation likely exists in the Southern Beaufort Sea. The adjoining subpopulations of Baffin Bay and Kane Basin, both of which are shared between Canada and Greenland, continue to be over-hunted and are likely declining at rates that will not be reversed without significant reduction in the annual kill. The subpopulation of Norwegian Bay is at risk due to its small size (<200 bears). Four subpopulations are more likely to be increasing rather than decreasing in size at the present time (comprising 29% of the total population). Trend cannot be projected for remaining subpopulations (43% of the total population) due to lack of recent estimates on vital rates and/or abundance.

Limiting factors and threats

The main, proximate limiting factors affecting polar bear distribution and numbers today are availability of food (access to and abundance of ice-dependent seals) and human-caused mortality (almost exclusively from hunting). Other potential limiting factors include intraspecific predation, pollution, especially that associated with offshore development of hydrocarbon reserves and increased ship traffic, and the accumulation of environmental contaminants (mainly organochlorines) in tissues of polar bears. Climate change is likely to influence all of the factors above and should thus be treated as the ultimate limiting factor to polar bears. If the climate continues to warm as projected by the Intergovernmental Panel on Climate Change (IPCC), all populations of polar bears will eventually be affected.

Special significance of the species

The polar bear is the only terrestrial carnivore to occupy the highest trophic level of a marine ecosystem. The polar bear is an icon of Canada's wildlife heritage, and is of great cultural significance to the Canadian people. Polar bears are also of cultural, spiritual, and economic significance to some northern native peoples. As a symbol of the pristine Arctic environment, polar bears are seen throughout the world as a barometer of important environmental issues, especially climate change and pollution. Canada has national and international responsibilities with respect to the study, management, and protection of polar bears, as outlined in the international *Agreement on the Conservation of Polar Bears*. This obligation is particularly important to our nation because we collectively manage 55–65% of the world's polar bears.

Existing protection

In 2006, largely in response to the threat posed by global warming, the polar bear was moved from Least Concern-Conservation Dependent to the threatened category of Vulnerable in the Red List of the Species Survival Commission (SSC) of the IUCN-The World Conservation Union. Polar bears are on Appendix II of CITES (Convention on International Trade in Endangered Species). Under CITES, any international shipment of polar bears or parts thereof requires a permit. Management authority for this species rests with the provinces, territories, and wildlife management boards established under land claims. Hunting is largely managed through quota systems and according to

aboriginal treaty rights. Internationally, the management of polar bears is coordinated under the *Agreement on the Conservation of Polar Bears*, signed by the federal government on behalf of all Canadian jurisdictions in November, 1973. At the time of writing, habitat of polar bears is formally protected only through Canada's terrestrial system of national parks and Ontario's provincial park system; these protected areas encompass approximately 2.9% of the area of occupancy of the species in Canada. The majority of polar bear habitat is marine, for which there are no federal, provincial, or territorial protected areas.

TABLE OF CONTENTS

Assessment Summary	iv
Executive Summary	v
TABLE OF CONTENTS	viii
LIST OF TABLES	x
LIST OF FIGURES	xi
1. INTRODUCTION	1
2. SPECIES INFORMATION	1
2.1 Name and Classification	1
2.2 Morphological Description	1
2.3 Evolution and Genetic Description	2
3. DISTRIBUTION	2
3.1 Global Range	2
3.2 Canadian Range	3
4. HABITAT	4
4.1 Habitat Requirements	4
4.2 Trends in Habitat	5
4.3 Habitat Protection	7
5. BIOLOGY	7
5.1 Life Cycle and Reproduction	7
5.2 Predation	9
5.3 Physiology	9
5.4 Home Ranges, Movements, and Dispersal	9
5.5 Interspecific Interactions	11
5.6 Behavioural Adaptations	11
6. LIMITING FACTORS AND THREATS	11
6.1 Food Availability	12
6.2 Human-Caused Mortality	13
6.3 Other Limiting Factors	14
7. POPULATION SIZE AND TRENDS	15
7.1 Status Table	16
7.2 Southern Beaufort Sea	18
7.3 Northern Beaufort Sea	19
7.4 Viscount Melville Sound	19
7.5 Norwegian Bay	20
7.6 Lancaster Sound	20
7.7 M'Clintock Channel	21
7.8 Gulf of Boothia	22
7.9 Foxe Basin	22
7.10 Western Hudson Bay	23
7.11 Southern Hudson Bay	24
7.12 Kane Basin	25
7.13 Baffin Bay	26
7.14 Davis Strait	27

8. SPECIAL SIGNIFICANCE OF THE SPECIES.....	28
9. EXISTING STATUS DESIGNATIONS AND PROTECTIONS	29
9.1 International Status Designations and Protections	29
9.2 Canadian Status Designations and Protections.....	30
9.3 Risks from Lack of Protection/Trends in Current Management.....	31
11. TECHNICAL SUMMARY	34
12. ACKNOWLEDGEMENTS	36
13. INFORMATION SOURCES	36
14. BIOGRAPHICAL SUMMARY OF REPORT WRITERS	49

LIST OF TABLES

- Table 1. Genetic distances among polar bears of subpopulations (see legend of Figure 1 for abbreviations) presented in Paetkau et al. (1999): F_{ST} ($\times 100$) below diagonal, D_{LR} above. Rectangles highlight distances within 4 suggested population clusters by Paetkau et al. (1999). F_{ST} is a correlation of allele frequencies between populations (Weir and Cockerham 1984) and D_{LR} is the mean genotype log likelihood ratio across individuals from the 2 subpopulations (Paetkau et al. 1997). Source: table reprinted from Paetkau et al. (1999) and © 1999 Blackwell Science Ltd. 50
- Table 2. Results of the population assignment test of Paetkau et al. (1999) based on microsatellite analysis of individuals sampled from the world's subpopulations of polar bears (abbreviations defined in the legend of Figure 1). Each row contains the samples from a study area ('subpopulation') and the columns indicate the subpopulations to which these samples were 'assigned' (in which their genotypes had the highest likelihood of occurring). For example, of polar bears captured in Davis Strait (DS), 13 animals were correctly assigned to that subpopulation unit by genetic analysis, whereas 18 individuals captured in Davis Strait were assigned to alternate subpopulations. The boxes present the 4 suggested population units by Paetkau et al. (1999), as in Table 1. Source: table reprinted from Paetkau et al. (1999) and © 1999 Blackwell Science Ltd. 51
- Table 3. Estimated means (and standard errors [SE] in parentheses) of post-den-emergence litter size and age-specific probabilities of litter production (LPR) for available females (i.e., females without cubs or 2-year-old cubs in the year previous) for subpopulations of Canadian polar bears. Source: IUCN/SSC Polar Bear Specialist Group (2006) and PBTC (2007), and primary literature presented in Sections 7.2–7.14. 52
- Table 4. Mean (SE in parentheses) of total (i.e., harvested) annual survival rates for age and sex classes of subpopulations of Canadian polar bears. No unique estimates are available for other subpopulations. Source: see Sections 7.2–7.14 for citations..... 52
- Table 5. Mean (SE in parentheses) of natural (i.e., unharvested) annual survival rates for age and sex classes of subpopulations of Canadian polar bears. No unique estimates are available for other subpopulations. Survival of yearlings is combined with survival of subadults for most subpopulations, except Western Hudson Bay (see footnote). Source: IUCN/SSC Polar Bear Specialist Group (2006) and PBTC (2007), and citations presented in Sections 7.2–7.14..... 53
- Table 6. Status of subpopulations of polar bears within or shared by Canada. Source: see Sections 7.1–7.14 for details and citations..... 54

LIST OF FIGURES

Figure 1.	Circumpolar distribution of the polar bear. Abbreviations of delineated subpopulations include Viscount Melville Sound (VM), Norwegian Bay (NW), Kane Basin (KB), Lancaster Sound (LS), Baffin Bay (BB), Davis Strait (DS) Southern Hudson Bay (SH), Western Hudson Bay (WH), Foxe Basin (FB), Gulf of Boothia (GB), M'Clintock Channel (MC), Southern Beaufort Sea (SB), and Northern Beaufort Sea (NB). Source: IUCN/SSC Polar Bear Specialist Group (2006).....	55
Figure 2.	Canadian subpopulations of polar bears. Abbreviations of delineated subpopulations include Viscount Melville Sound (VM), Norwegian Bay (NW), Kane Basin (KB), Lancaster Sound (LS), Baffin Bay (BB), Davis Strait (DS) Southern Hudson Bay (SH), Western Hudson Bay (WH), Foxe Basin (FB), Gulf of Boothia (GB), M'Clintock Channel (MC), Southern Beaufort Sea (SB), and Northern Beaufort Sea (NB). Source: Taylor et al. (2001) and PBTC (2007).....	56
Figure 3.	The extent of occurrence (bold polygon, $9.1 \times 10^6 \text{ km}^2$) and area of occupancy (shaded region, $5.6 \times 10^6 \text{ km}^2$) of polar bears in Canada (areas estimated using Lambert Equal-Area Azimuthal [North Pole] projection in ArcGIS, v. 9.1 [ESRI, 380 New York Street, Redlands, CA]). The extent of occurrence as defined by COSEWIC (COSEWIC's Assessment Process and Criteria, reviewed and approved by COSEWIC in April 2006) is: "the area included in a polygon without concave angles that encompasses the geographic distribution of all known populations of a species (up to and including the international border)." The "area of occupancy" is defined as the: "area within 'extent of occurrence' that is occupied by a taxon, excluding cases of vagrancy.".....	57
Figure 4.	Ice concentrations at their minimum extents in summer recorded over a 24-year span. Panels a and b display the average minima recorded during the years 1979–90 and 1991–2002, respectively. Panel c shows the minimum concentration recorded in 2003. Ice concentrations are measurable down to 8%, below which it is impossible to discriminate between open water and ice-covered areas. Panel d, the difference between the first 2 panels (b – a), reveals the changes between the 2 periods. The average size of the ice pack in 1979–90 is greater than that in 1991–2002 by about 12%. Source: reproduced from Comiso and Parkinson (2004) and © 2004 the American Institute of Physics.	58
Figure 5.	Current and model-averaged projected decreases in extent of sea ice in September as presented by ACIA (2004). Source: ACIA (2004) and © Arctic Climate Impact Assessment.	59

1. INTRODUCTION

Canada has national and international responsibilities with respect to the study, management, and protection of polar bears. The international *Agreement on the Conservation of Polar Bears* (<http://pbsq.npolar.no>), signed by Canada, the United States, Norway, Denmark (on behalf of Greenland), and Russia (the former U.S.S.R.) on November 15, 1973, stipulates that management of polar bears shall be conducted “in accordance with sound conservation practices based on the best available scientific data.” This obligation is particularly important to Canada because we collectively manage 55–65% of the world’s polar bears. This document summarizes and updates our collective knowledge of the biology and status of the polar bear in Canada.

2. SPECIES INFORMATION

2.1 Name and Classification

Class Mammalia

Order Carnivora

Family Ursidae

Subfamily Ursinae

Scientific name *Ursus maritimus* Phipps (1774), no subspecies

Common names Polar bear, L’ours blanc, Nanuk, Nanuq, Wapusk

Gentry (2001) provides an historical summary of the nomenclature of the polar bear. In brief, Linnaeus (1758, p. 47) first referred to the polar bear as “*Ursus maritimus albus-major, articus*,” but he did not consider the polar bear as a distinct species from the brown bear (*Ursus arctos*). Phipps (1774, p. 185) was first to describe the polar bear as its own species. Gentry (2001) writes that, based on the rules of nomenclature, the appropriate authority and date of the specific name of *Ursus maritimus* is Phipps (1774) and not Linnaeus (1758), as is sometimes observed. Alternative generic names have included *Thalassarctos*, *Thalarctos*, and *Thalatarctos*; however, since the 1960s most authors have used the name *Ursus maritimus*.

2.2 Morphological Description

Polar bears are large ursids most comparable in size and shape to the brown bear, from which they differ because they lack the characteristic shoulder hump, have a smaller and less dish-shaped head, a longer rostrum, and an elongated neck. Compared to brown bears, the grinding surfaces of the cheek teeth of polar bears are more serrated, which is an adaptation to a more carnivorous diet. The claws of the polar bear are smaller and sharper than those of the brown bear, and the forepaws are enlarged making them useful for paddling in water, collapsing roofs of subnival birth and haul-out lairs of seals, digging through or climbing on snow and ice, and dispatching seals. Unlike other bear species, pads of the paws of the polar bear are entirely furred which may function to help insulate the feet or improve traction on ice and snow. Polar bear skin is black which improves absorption of solar energy. Translucent hair makes the pelage appear white, especially right after moulting, although it may appear yellow or off-white during summer. Fur of the polar bear will often reflect the colours of the sky and snow, which provides camouflage while hunting. Sexual dimorphism is pronounced. Male polar bears can weigh up to 800 kg and reach 2.8 m in length from nose to tail (DeMaster and Stirling 1981). Females are smaller, usually not exceeding 400 kg and 2.5 m (Amstrup 2003).

2.3 Evolution and Genetic Description

Fossil evidence suggests that polar bears evolved from brown bears sometime within the last 400,000 years (Thenius 1953; Kurtén 1964). This finding is supported by data on molecular genetics that suggests divergence of the species occurred as recently as 200,000–250,000 years ago. In particular, the polar bear has been linked to a clade of brown bears that occur today in the Alexander Archipelago of southeast Alaska (Cronin et al. 1991; Talbot and Shields 1996a,b). Cronin et al. (1991) reported that mitochondrial DNA (mtDNA) of polar bears and brown bears of the Alexander Archipelago differ by only 1%; however, divergence of more than 2.5% separates polar bears from brown bears occurring elsewhere. Brown bears are thought to have survived in refugia in the southern Alexander Archipelago during the Late Wisconsin glacial maximum of 20,000 years ago (Heaton and Grady 1993); however, since the polar bear evidently separated from this clade long before the first of the Wisconsin glaciations (commencing ca. 70,000 years ago), it is unlikely that polar bears evolved specifically in the Alexander Archipelago.

The close relationship between the polar bear and brown bear is highlighted by instances of hybridization in the wild (e.g., a hybrid bear was recently harvested near Banks Island; personal communication of Gau [2006]). Successful, interspecific matings in captivity have been observed for many years, with clear evidence of first- and second-generation fertility in offspring (Martin 1876, 1882; Kowalska 1962, 1965, 1969).

The molecular ecology of polar bears has most recently been studied by Paetkau et al. (1995, 1999), Crompton (2004), and Saunders (2005). As discussed in more detail in Section 3.2, there are varying degrees of genetic differences between most identified subpopulations of polar bears in Canada (Figures 1 and 2; Tables 1 and 2); however, these differences do not identify them as genetic subunits or subspecies. Paetkau (1999) states that, with respect to identified management subpopulations across the circumpolar range of the polar bear: “no genetic discontinuities [have been] found that would be consistent with evolutionarily significant periods of isolation between groups.”

Since the Late Pleistocene, notable morphological change has occurred in the polar bear. In particular, there has been a trend toward a decrease in body size, fossil polar bears being much larger than they are today (Kurtén 1964). Polar bears evolved to take advantage of killing seals from a sea-ice platform, particularly ringed seals (*Pusa hispida*) and bearded seals (*Erignathus barbatus*). Many of the physical traits of polar bears can be viewed as adaptations to hunting arctic seals.

3. DISTRIBUTION

3.1 Global Range

Polar bears are circumpolar in the northern hemisphere. Initially, polar bears were believed to occur as a single, homogeneous population that ranged throughout the circumpolar Arctic, with animals carried passively on sea ice by the predominant currents (Amstrup 2003). However, recent studies based on satellite telemetry and mark-recapture demonstrate that, although some movements may be exceptionally large (Messier et al. 2001), polar bears do not wander as nomads throughout the Arctic, but rather show seasonal fidelity to local areas (Taylor and Lee 1995; Bethke et al. 1996; Taylor et al. 2001). Today, the circumpolar distribution of the polar bear is usually

divided into 19–20 “subpopulations” of which 13 (excluding bears of the Arctic Basin) range into or are entirely contained within Canada (Figures 1–3; Taylor et al. 2001).

3.2 Canadian Range

In North America, the area of occupancy (Figure 3) of the polar bear extends from the southern edge of the permanent multi-year pack ice of the Arctic Ocean (Arctic Basin) to include sea ice and coastal areas of Greenland, the Canadian Arctic Archipelago, east to the Labrador coast, south to James Bay, and west to the Bering Sea. A few polar bears regularly appear as far south as the island of Newfoundland. Bears have occasionally been noted in the Gulf of St. Lawrence in years when heavy pack ice drifts farther south than normal. These observations are included in the species’ extent of occurrence (Figure 3) along with verified (e.g., photographed), incidental sightings of polar bears that come from as far inland as northeast Saskatchewan (Goodyear 2003). The present area of occupancy of the polar bear in Canada appears to correspond to the species’ historic area of occupancy after the end of the last major glacial retreat (10,000 years ago), although some authors suggest that polar bears were more common in southern Labrador and Newfoundland in previous centuries than they are today (Smith et al. 1975; Stirling and Kiliaan 1980). Smith et al. (1975) communicates that early explorers commonly encountered polar bears in Newfoundland, and bears were sometimes observed in high densities in southern Labrador (e.g., a congregation of 32 bears observed by Cartwright in the 1770s feeding on salmon at the mouth of the Eagle River). Historic reductions in the abundance of polar bears in southern Labrador and Newfoundland may have been a consequence of several hundred years of human habitation and associated hunting, or a response to climate warming after climax of the cooling events commonly referred to as the “Little Ice Age”, particularly the substantial glacial (and sea ice) advances in North America of 1711–1724 and 1835–1849 (Lamb 1977, p. 453).

Delineation of subpopulations in Canada (Figure 2) has been largely based on hierarchical cluster analysis of movements of radio-collared females (Bethke et al. 1996; Taylor et al. 2001; Amstrup et al. 2004). Within most subpopulations, population dynamics appear to be determined largely from internal rates of birth and death (mainly from harvest, which is set at different levels according to subpopulation), rather than emigration/immigration, although annual rates of exchange between adjacent subpopulations range from 0.4–8.9% (Taylor et al. 2001). Genetic distances between sampled individuals from subpopulations based on F_{ST} (a correlation of allele frequencies between populations [Weir and Cockerham 1984]) suggest the possibility of 4 population clusters among identified subpopulations (Table 1 and Paetkau et al. 1999); however, misclassification rates in assignment tests among clusters and subpopulations (Table 2) do not support definitive boundaries in terms of genetic isolation across the range of the polar bear (Paetkau et al. 1999). Recent Aboriginal Traditional Knowledge (ATK; Keith 2005) and genetic analysis (Saunders 2005) also question movement-derived boundaries between the identified subpopulations of M’Clintock Channel and the Gulf of Boothia (Figure 2). Saunders (2005) found no support for any genetic discontinuities between these 2 subpopulations. Crompton (2004) additionally concluded that there was poor genetic support for differences between movement-derived subpopulations of Western Hudson Bay, Foxe Basin, and Southern Hudson Bay (Figure 2). Further, interchange of individuals between the subpopulations of the Southern Beaufort Sea and Northern Beaufort Sea (as currently defined; Figure 2) is known to be considerable (Amstrup et al. 2004). Although useful for describing local

trends in population growth, demographic parameters, behaviours, and managing polar bears, identified subpopulations cannot be considered Designatable Units as per COSEWIC guidelines (Appendix F5, COSEWIC Operations and Procedures Manual, last reviewed and approved by COSEWIC in 2005). There is only a single Designatable Unit for the polar bear in Canada. That said, given the large range of the polar bear and historical management of the species on a subpopulation-by-subpopulation basis using bounds presented in Figure 2 (including different harvest rates), trends in the Canadian polar bear population are generally discussed in this report according to identified subpopulations (Section 7).

4. HABITAT

4.1 Habitat Requirements

The physical attributes of sea ice are the primary determinants of the quality of polar bear habitat. Changes in sea ice and associated snow cover affect light transmission and thermodynamic processes important to lower trophic levels of the arctic marine ecosystem (Welch et al. 1992; Barber et al. 1995), that, combined with kinematic or topographic characteristics of sea ice, influence the distribution of ringed seals (Stirling and Lunn 1997; Barber and Iacozza 2004). In the Canadian Arctic, polar bear habitat is closely associated with that of the ringed seal (Stirling and Øritsland 1995) and includes areas of consolidated pack ice, areas immediately adjacent to pressure ridges, between multi-year and first-year ice floes, and at the floe edge between marginal and landfast sea ice (Stirling et al. 1982; Kingsley et al. 1985; Stirling and Derocher 1993; Stirling et al. 1993; Ferguson et al. 2000a). Seals are hunted through breathing holes, in birth lairs, or when hauled out on ice (Stirling and Archibald 1977; Smith 1980). Bearded seals, harp seals (*Pagophilus groenlandica*), spotted seals (*Pusa largha*), hooded seals (*Cystophora cristata*), walrus (*Odobenus rosmarus*), beluga whales (*Delphinapterus leucas*), and narwhal (*Monodon monoceros*) also feature in the diet of polar bears (Stirling and Archibald 1977; Kiliaan and Stirling 1978; Fay 1982; Lowry et al. 1987; Calvert and Stirling 1990; Smith and Sjøre 1990; Derocher et al. 2002); however, scientific knowledge and ATK suggest it is the young ringed seal hunted at its subnivalian den that is most important to the majority of polar bears (Stirling and Archibald 1977; Smith 1980; McDonald et al. 1997). Ringed seals, which live exclusively in association with sea ice for at least part of the year (as do bearded and harp seals), have apparently been the principal prey of polar bears for much of their co-evolutionary history, and many ringed seal behaviours appear to be adaptations to avoid predation by polar bears (Stirling 1977; Amstrup 2003). Changes in the distribution of ice-dependent phocids in response to climate warming is certain to impact the distribution of polar bears (Stirling and Derocher 1993; Barber and Iacozza 2004; Derocher et al. 2004).

During summer, polar bears may remain on islands or coastlines with landfast ice or drift on ice floes. If forced on land for summer due to lack of sea ice (50–60% of the Canadian population), polar bears vary in their habitat selection, often by sex and age group, with males displacing females and cubs inland and away from the coast (Stirling et al. 2004). Food may not be consumed, and bears may rely entirely on fat reserves (Derocher and Stirling 1990). In some areas (e.g., northeast Manitoba, Derocher et al. 1993; Davis Strait, M.K. Taylor, Department of Environment, Government of Nunavut, pers. obs.), polar bears may feed extensively on blueberries (*Vaccinium uliginosum*) and crowberries (*Empetrum nigrum*). Polar bears may also depredate nests of waterfowl (e.g., Smith and Hill 1996) and have been observed to kill caribou (e.g., Derocher et al.

2000; Brook and Richardson 2002). In Labrador, feeding on salmon by bears has also been observed (Brazil and Goudie 2006). Whale carcasses attract large numbers of bears during the open-water season (Kalxdorff 1997; Perham 2005). The attraction of bears to garbage during the ice-free season is of major concern to the management of polar bears and human safety in the Arctic. As the ocean freezes again in late autumn, bears that were trapped on land redistribute themselves throughout subpopulation ranges except pregnant females, which excavate maternity dens (Section 5.1).

4.2 Trends in Habitat

Trends in habitat as they relate to the status of polar bears focus on impacts of climate warming, particularly spatial and temporal trends in the types and extent of sea ice, including length of the open-water season. Climate-change related trends in conditions of terrestrial habitat, including denning habitat (e.g., Obbard and Walton 2004), must also be taken into consideration; however, effects of climate warming on conditions of sea ice are most important to the status of the species. Climate change is modifying the dynamics of sea ice formation and distribution in the Arctic, and it is expected that amounts of multi-year sea ice will be reduced and that ice will continue to trend toward a predominance of thinner, annual ice formations. These changes are widely documented by both western science and through ATK. Several sources highlighting ATK of polar bears report Inuit concerns about deterioration of sea ice conditions and their impact on polar bears (Atatahak and Banci 2001; Dowsley 2005; Keith et al. 2005; NTI 2005). These conditions include the disappearance of multi-year ice and icebergs, which polar bears use as feeding and resting platforms. Other changes include thinner ice, more rough ice, and earlier spring break-up which may reduce polar bear hunting efficiency.

Scientific observations of changes in sea ice in the Arctic have most recently been summarized by Lemke et al. (2007) in their collaborative chapter as part of the 2007 report of the Intergovernmental Panel on Climate Change (IPCC). Briefly, satellite data indicate a $2.7 \pm 0.6\%$ per decade decline in annual mean arctic sea ice extent observed since 1978. The decline for summer extent is larger than for winter in the Arctic, with the summer minimum declining at a rate of $7.4 \pm 2.4\%$ per decade since 1979. Some data indicate that the summer decline began around 1970. Submarine-derived data for the central Arctic indicate that the average thickness of sea ice in the central Arctic has very likely decreased by up to 1 m from 1987 to 1997. Model-based reconstructions support this, suggesting an arctic-wide reduction of 0.6 to 0.9 m over the same period. Large-scale trends prior to 1987 are ambiguous. In Western Hudson Bay, where variables of climate warming have recently been used to explain variation in survival rates of polar bears (Regehr et al. 2007; see also below and Sections 6.1 and 7.10), analyses of regional climate data have shown that between 1950 and 2000, mean air temperatures in April, May, and June have warmed at a rate of $0.3\text{--}0.8^\circ\text{C}$ per decade (Skinner et al. 1998; Ferguson et al. 2005; Gagnon and Gough 2005). For example, April–May temperatures increased from a mean of -12.4°C in 1962 to -9.8°C in 2000 (Ferguson et al. 2005). From 1979 to 2004, spring break-up as measured from ice concentrations (50% ice: 50% water) shifted from late June to late May, an average change of -0.75 ± 0.25 (mean ± 1 SE) days earlier each year (Stirling and Parkinson 2006). Stirling and Parkinson (2006) demonstrated similar trends in earlier timing of break-up for Foxe Basin (-0.58 ± 0.19 days/year), Baffin Bay (-0.66 ± 0.20 days/year), and Davis Strait (-0.64 ± 0.69 days/year). In the above areas, almost all sea ice normally disappears during summer (Figure 4). For areas where ice persists in concentrations detectable from

satellite imagery throughout the entire year (Figure 4), changes in ice concentrations (measured as minimum ice concentrations in summer) have been greatest in the Beaufort Sea and Gulf of Boothia and least in the central Arctic Archipelago (Parkinson and Cavalieri 2002; Comiso and Parkinson 2004).

Scientific projections of effects of climate change on sea ice in the Arctic vary—sometimes widely—and so we recommend that model-averaged projections, such as those presented by the 2007 report of the IPCC and 2004 Arctic Climate Impact Assessment (ACIA), be used to anticipate effects of climate change on the distribution and abundance of polar bears. Projected changes in sea ice in the Arctic as outlined by the IPCC are presented in the chapter of Christensen et al. (2007). In summary, the Arctic is very likely to continue to warm during this century in most areas, and the annual mean warming is very likely to exceed the global mean warming. At the end of the 21st century, the projected annual warming in the Arctic is 5°C (as estimated by the MMD-A1B ensemble mean projection of the IPCC); however, there is a considerable across-model range of 2.8°C to 7.8°C. Warming is projected to be greatest in winter and smallest in summer. Annual arctic precipitation is also very likely to increase in winter. Arctic sea ice is very likely to continue to decrease in extent and thickness, but it is uncertain how circulation patterns in the Arctic Ocean might change.

Model-averaged projections of change in extent of sea ice are most often presented as anticipated changes in the minimum extent of sea ice that occurs in late summer (September) in the Arctic. Projected changes in the extent of summer sea ice are presented in Figure 5, which are model-averaged projected changes reproduced from ACIA (2004). Changes in extent of sea ice have varied and will continue to vary regionally in Canada, and it is anticipated that the monthly extents of sea ice will show the least rates of change within the Arctic Archipelago and the greatest rates of change in Hudson Bay, Foxe Basin, Baffin Bay, Davis Strait, and the Beaufort Sea. Nonetheless, ACIA model-averaging indicates that by 2090 it is likely that almost all sea ice within Canada will form only as annual (winter) sea ice (Figure 5).

Higher temperatures and loss of sea ice in the Arctic does not bode well for the future of polar bears. However, quantitative data on what trends in habitat mean for the future distribution and abundance of polar bears are few. In particular, there is a lack of data on how the dependent variables of projection models produced by bodies like the ACIA and IPCC (e.g., temperature, precipitation, summer extent of sea ice) relate as predictors of survival and reproduction (and thus abundance and distribution) of polar bears. As vital rates will likely relate to variables of climate change in a non-linear manner, depending not only on location (northern subpopulations may initially benefit from reductions in less-productive, multi-year sea ice) but also important factors such as density of prey species, it is difficult to objectively predict population trends into the future from data on climate warming alone. For example, inferring demographic implications for polar bears from changes in extent of summer sea ice is problematic because total or near total melting of sea ice that forces bears onshore in summer is the normal situation faced by approximately 50–60% of the polar bear population in Canada. At the time of writing this report, only 2 empirical studies have attempted to correlate variables of climate change with vital rates of polar bears: one in Western Hudson Bay (Regehr et al. 2007; Section 6.1 and 7.10); and another in the Southern Beaufort Sea (Regehr et al. 2006; Section 7.3). The former focused on how the timing of break-up of sea ice might affect annual survival rates, in particular the date at which seas were comprised of 50% water and 50% ice (see Stirling and Parkinson [2006] for details of this variable); the

second examined the effect on annual survival rates of the number of days in a year in which sea ice concentration in preferred habitat was <50%. Only the study in Western Hudson Bay (the more comprehensive of the 2 studies) was able to demonstrate an effect on polar bear demography (Sections 6.1 and 7.10). We further discuss these results and the importance of trends in habitat (climate warming) to the status of polar bears in Sections 5–7 and Section 9.

4.3 Habitat Protection

Canada's *Oceans Act* of 1996 allows for the establishment of Marine Protected Areas to conserve marine habitat for polar bears; however, there are no National Marine Conservation Areas in the Arctic at present. Hence, there is no formal protection of the vast majority of polar bear habitat in Canada. Some protection of terrestrial habitat important to polar bears is afforded through Canada's national parks and Ontario's provincial parks. The north shore of Ivvavik National Park (9,750 km²) offers protection of denning and onshore habitat for polar bears of the Southern Beaufort Sea. Tuktot Nogait National Park (16,340 km²) offers limited protection to habitat of bears of the Northern Beaufort Sea because it is largely removed (by approximately 20 km) from the coast of Amundsen Gulf. Large protected areas in the Canadian Arctic Archipelago include Aulavik National Park (12,274 km²) in the Northwest Territories and Auyuittuq (19,707 km²), Sirmilik (22,200 km²), and Quttinirpaaq (37,775 km²) National Parks in Nunavut. The newly announced Torngat Mountains National Park Reserve (9,600 km²) in Labrador will protect a limited amount of terrestrial habitat for polar bears of Davis Strait. Parks specifically designated to protect denning and onshore habitat of polar bears in Hudson Bay include Wapusk National Park in Manitoba (11,475 km²) and Polar Bear Provincial Park (23,552 km²) in Ontario. Maternity denning occurs in the Cape Tatnam and Cape Churchill Wildlife Management Areas, Manitoba, and both of these regions have management plans under development that will control access to maternity denning areas. All formally protected areas within the range of the polar bear in Canada encompass approximately 2.9% of the area of occupancy of the species (Figure 3).

5. BIOLOGY

5.1 Life Cycle and Reproduction

The reproductive capability of polar bears varies among subpopulations. Age at first reproduction may be as early as 4 years, with most subpopulations having females producing litters at relatively high rates by age 6 (Table 3). The latest age at first reproduction is near the northern extreme of the species' range (Table 3) in Kane Basin (age 6) and Norwegian Bay (age 7).

Male polar bears likely become physiologically mature at 5–6 years of age. Fully formed spermatozoa appear only in low concentrations in testes of bears aged 2–4 years; concentrations asymptote at 5.8 years of age (Rosing-Asvid et al. 2002). Despite physiological maturity, younger males are not likely to reproduce because older males (if they are around) prevent them from doing so. Saunders (2005) recently demonstrated using paternity analysis that older adult male bears sire a disproportionate number of cubs compared to their representation in the population. It appears that most males do not enter the reproductive segment of the population until they are 8–10 years old (Ramsay and Stirling 1988; Derocher and Stirling 1998; Saunders 2005).

Females enter estrus in March, which lasts until June and peaks in late April and early May (Palmer et al. 1988; Amstrup 2003). Ovulation is induced by coitus (Wimsatt 1963; Ramsay and Dunbrack 1986), and implantation is delayed until October (Palmer et al. 1988). Pregnancy rates appear to vary markedly among subpopulations, with as few as 50% of adult females (>5 years) that are available to mate (i.e., having no cubs or cubs that are about to be weaned) producing cubs the following year (e.g., Kane Basin; Table 3) to as many as 100% (Baffin Bay; Table 3).

Pregnant females enter maternity dens in late October and the young, normally 1–2, are born between November and early January (Harington 1968; Derocher et al. 1992); however, according to Inuit traditional knowledge, the timing of parturition varies with latitude. Dens are generally excavated in snow (although dens in frozen earth and peat are common in the south [Clark et al. 1997]), and are then covered and closed by snowdrifts. They are frequently located on islands or land in close proximity to the coast and adjacent to areas with high seal densities in spring (Harington 1968; Brice-Bennett 1977, Stirling and Andriashek 1992; Messier et al. 1994; Kalxdorff 1997; Ferguson et al. 2000b; Van de Velde et al. 2003; Lewis et al. 2006), although in Western Hudson Bay polar bears may den up to 120 km inland at traditional denning areas (Kolenosky and Prevett 1983; Ramsay and Stirling 1990; Lunn et al. 2004; Richardson et al. 2005). Amstrup and Gardner (1994) observed that in the Beaufort Sea maternal dens on drifting pack ice were common, although this would be unusual for polar bears throughout much of the Canadian Arctic. All dens on sea ice observed by Messier et al. (1994) and Ferguson et al. (2000b) were classified as temporary shelter dens, rather than maternity dens.

At birth, cubs weigh approximately 0.6 kg. They are nursed inside the den until sometime between the end of February and the middle of April, depending on latitude. By this time, cubs weigh 10–12 kg (Ramsay and Stirling 1988; Derocher and Stirling 1995a). As observed for brown bears (Ferguson and McLoughlin 2000), litter size varies little according to subpopulation (Table 3).

Lentfer et al. (1980) and Taylor et al. (1987) estimated an average interlitter interval of approximately 3.6 years. The exception is Western Hudson Bay where, in the early 1980s, up to 40% of females weaned their young at 1 year of age (Ramsay and Stirling 1988), although this proportion has declined since then (Derocher and Stirling 1995a).

Like other ursids, polar bears experience relatively high survival rates, and survival can generally be distinguished based on age or stage of life history. Generally, researchers assess survival rates separately for cubs-of-the-year (COYs), yearlings and subadults (ages 1–4), prime-age adults (ages 5–20), and senescent adults (ages 21+). Maximum age is often considered to be 30 years for bears in the wild, although lifespans longer than this are purported to be common in captivity. The general pattern is for COYs and yearlings to exhibit survival rates that are lower than subadults and prime adults, and senescent adults have lower survival rates than prime adults. Total survival rates (Table 4) are distinguished from natural survival rates (Table 5) which are computed by considering the fates of bears that die only of natural causes. Males often have lower total survival rates than females, due to purposeful sex-selectivity in the harvest and a greater propensity for males to become problem animals.

5.2 Predation

Polar bears have no natural predators. Intraspecific predation is, however, a potential limiting factor of population growth. The killing of cubs to bring females into estrus, or killing of cubs and adults for food, is not uncommon in Ursidae, including polar bears (Taylor et al. 1985; Derocher and Taylor 1994; Taylor 1994; Derocher and Wiig 1999; Dyck and Daley 2002). Intraspecific conflicts related to nutritional stress are expected to be higher as density (relative to the carrying capacity of the environment) increases. Hence, if climate change acts to reduce carrying capacity, we might expect increases in rates of intraspecific conflict where declines in population size lags behind changes in carrying capacity (e.g., Southern Beaufort Sea [Amstrup et al. 2006]). The potential for intraspecific predation to limit polar bears is discussed in more detail in Section 6.3.

5.3 Physiology

The most notable aspect of polar bear physiology, in the context of assigning status to the species, relates to the ability of polar bears to fast for long periods of time when forced on land during the ice-free season, without access to seals (50–60% of bears in Canada). While on land little food is available, and bears must rely on stored energy reserves until the sea ice forms again in late autumn (Ramsay and Hobson 1991; Derocher et al. 1993; Atkinson and Ramsay 1995). Pregnant females must also wait until young are born and old enough to be moved from the den before ending their fast; in doing so pregnant females may not eat for up to 8 months, while having to meet the energetic demands of gestation and lactation (Atkinson and Ramsay 1995). Adult polar bears lose approximately 1 kg of body mass per day during fasts (Derocher and Stirling 1995a; Polischuk et al. 2002), and pregnant females may lose as much as 43% of their body mass (Atkinson and Ramsay 1995). Because offspring body mass is closely tied to the amount of body fat carried by females (Atkinson and Ramsay 1995), reproductive success likely depends on how heavy females are when they begin, or more importantly end, periods of fasting. Obtaining data on how the success of the seal hunt in the period preceding break-up impacts the reproduction and survival of polar bears is a major research priority. Inability to put on fat reserves prior to break-up of sea ice may be a major determinant of the southern limit of the distribution of polar bears (Sections 4.2 and 6.1).

As an apex predator in the arctic marine ecosystem, polar bears may be exposed to a number of environmental pollutants and contaminants that have the potential to affect survival and reproduction (Amstrup 2003). Important environmental contaminants and their potential limiting effects on polar bears are discussed in Section 6.3.

5.4 Home Ranges, Movements, and Dispersal

Polar bears travel over exceedingly large areas relative to other terrestrial mammals (Ferguson et al. 1999), and the only practical means by which to track their movements is via remote satellite telemetry (see Messier et al. 2001). Radios are generally fitted using collars only on adult females given practical difficulties in securely attaching transmitters to males (necks of males are often of wider circumference than their heads); hence, movement patterns of male polar bears are not well known. Female polar bears possess large annual home ranges, varying from 940 km² to 540,700 km² (\bar{x} = 125,500 km², SD = 113,795, n = 93; Ferguson et al. 1999). Home ranges of polar bears vary with several factors, including local presence of attractants such as polynyas (Ferguson et al.

1999; Messier et al. 2001). The ratio of land to sea within a given home range and seasonal variation in ice cover have been shown to explain up to 66% of the variation in home range size (Ferguson et al. 1999). Bears using land during the ice-free season have larger home ranges than those with year-round access to ice, as do bears that possess home ranges with greater seasonal variation in type of ice cover (Ferguson et al. 1999).

Observations of movement patterns within home ranges reinforce the importance of sea ice to the ecology of polar bears. As expected from the size of home ranges, rates of movement are very high when compared to other terrestrial mammals, with most published, mean estimates of travel speeds on sea ice falling within the range of 0.5–2.1 km/h (Larsen et al. 1983; Durner and Amstrup 1995; Born et al. 1997; Amstrup et al. 2000; Ferguson et al. 2001). The highest activity is from May through June and July, depending on conditions of sea ice and coinciding with availability of newborn seal pups (Pasitschniak-Arts and Messier 1999; Amstrup 2003). Mauritzen et al. (2003) showed that movement rates of polar bears increased with decreasing thickness of sea ice. In the High Arctic, activity is lowest during winter, perhaps due to inclement weather, limited accessibility to seals, and energy conservation during the coldest months (Messier et al. 1992, 1994).

Movements of pregnant females cease after they enter maternity dens in late autumn (Section 5.1), but non-pregnant females and males will also use snow shelters for 0.5–4 months of the winter (Harington 1968) and fast in a manner that is physiologically similar to torpor during periods of food shortages (Watts and Hansen 1987). However, use of shelter dens varies with conditions of sea ice and latitude and is more common in the High Arctic (Ferguson et al. 2000b). In the southern Arctic, where sea ice melts, bears may be forced to spend up to several months on land while waiting for freeze-up. This phenomenon is most marked at the southern range of the polar bear in Canada, especially Hudson Bay and James Bay (Stirling et al. 1977; Derocher and Stirling 1990), eastern Baffin Island (Stirling et al. 1980; Ferguson et al. 1997; Taylor et al. 2005), and Davis Strait (M.K. Taylor, Department of Environment, Government of Nunavut, pers. obs.). Once forced on shore for summer, movements are considerably less than on sea ice and bears spend most of their time resting or, if female and pregnant, investigating areas of potential den sites (Ferguson et al. 1997, 1998; Lunn et al. 2004).

Dispersal in polar bears is poorly understood largely because subadult bears have rarely been tracked using radio-collars. Subadults, though marked when captured, are not usually collared as these bears can quickly outgrow fitted collars. Dispersal events have, however, been recorded using genetic analyses (Crompton 2004; Saunders 2005). Results from bears in the Gulf of Boothia and M'Clintock Channel (Saunders 2005), and Western Hudson Bay, Southern Hudson Bay, Foxe Basin, and Davis Strait (Crompton 2004) suggest that dispersing bears can and do traverse identified subpopulation boundaries. Dispersal across subpopulation boundaries—initially identified based on movements of marked and radio-collared adults (Taylor and Lee 1995; Bethke et al. 1996)—may in part explain the lack of sharp genetic differences among subpopulations (Tables 1 and 2).

5.5 Interspecific Interactions

Polar bears are obligate predators of ice-dependent seals, especially the ringed seal. Coevolution between ringed seals and polar bears and the potential for distributional changes in the occurrence of ringed seals (and other ice-dependent phocids) on polar bear distribution are discussed in Sections 3, 4, and 6.

5.6 Behavioural Adaptations

In addition to being physiologically adapted to environmental stochasticity and surviving long periods without food, polar bears exhibit behavioural adaptations that allow them to survive in extreme or variable environments. Participants of recent ATK studies in Gjoa Haven, Cambridge Bay and Taloyoak (Atatahak and Banci 2001; Keith et al. 2005) communicated that polar bears readily adapt their movements to environmental conditions and availability of prey species, but can be sensitive to human activity. However, polar bears are known to use non-natural sources of food (e.g., garbage) and may habituate to the presence of humans, even in the presence of disruptive activities (e.g., hazing) if food rewards can still be obtained. The curiosity of polar bears makes them particularly vulnerable to human-caused mortality in defense of life or property. Polar bears are also attracted to and may consume foreign substances (e.g., petroleum products or ethylene glycol [antifreeze]) that can be harmful or cause death (Stirling 1988b; Amstrup et al. 1989; Derocher and Stirling 1991). Inuit observations of polar bears eating plastic bags and engine oil apparently increased through the 1990s (McDonald et al. 1997), and Inuit observers of polar bears in the Baffin Bay area report an expansion in the types of foods eaten by bears in recent years (Dowsley 2005), including eggs of sea birds and Inuit meat caches. As described in Section 4.1, the diet of polar bears can extend to several species of mammals and birds, Inuit meat caches, and vegetation including berries; however, polar bears are best-characterized as an obligate predator of seals using sea ice as a hunting platform.

6. LIMITING FACTORS AND THREATS

The main, proximate limiting factors affecting polar bear distribution and abundance are availability of food (access to and abundance of ice-dependent seals) and human-caused mortality (almost exclusively from hunting). Other potential limiting factors include intraspecific predation, pollution, especially that associated with offshore development of hydrocarbon reserves and increased sea traffic in the Arctic, and the accumulation of environmental contaminants (mainly organochlorines) in tissues of polar bears. In recent years, however, climate warming has dominated the debate surrounding polar bear conservation. Review papers (e.g., Stirling and Derocher 1993; Barber and Iacozza 2004; Derocher et al. 2004; Stirling and Parkinson 2006), documents of ATK (e.g., Dowsley 2005), and observational reports (e.g., Amstrup et al. 2006; Monnett and Gleason 2006) offer insight into the possible impacts of past and continued climate warming to polar bears. Empirical studies of correlations between variables of climate change and body condition (Stirling et al. 1999; Obbard et al. 2006), and, recently, demographic rates (Regehr et al. 2006, 2007) are more useful for quantitative predictions of how climate warming might underlie proximate limiting factors and threats faced by bears (see also Section 4.2). Climate change will likely influence all of the proximate limiting factors to polar bears listed above and may therefore be thought of as an ultimate limiting factor to the species. We thus treat climate change as an integral part of any discussion of the limiting factors to polar bears.

6.1 Food Availability

Recently, researchers of the Canadian Wildlife Service and USGS Alaska Science Center established a relationship between earlier break-up of sea ice in Western Hudson Bay and decreased survival of non-prime adult age classes of polar bears (Regehr et al. 2007; see also Section 4.2), providing the first quantitative evidence for effects of climate-related stressors on polar bear population dynamics. (A similar study in the Southern Beaufort Sea [Regehr et al. 2006] failed to find support for variables of climate change [annual duration of sea ice] explaining variation in survival, although these results should be interpreted in light of limitations of the length of study [5 years as opposed to 20 years in Western Hudson Bay] and inability to separate subadult rates from rates of prime adults as in Regehr et al. [2007]). Coupling reduced survival for most age and sex classes in Western Hudson Bay with observations that body size of females coming off the sea ice has declined in association with earlier break-up in spring (Stirling et al. 1999), decline in the polar bear subpopulation of Western Hudson Bay (Section 7.10) is best explained by reduced access to food.

In Western Hudson Bay, there is some evidence that ringed seal reproduction has been reduced by climate warming (Ferguson et al. 2005; Stirling 2005); hence, polar bears may be responding to reductions in numbers of seals. It is possible that, at least in the context of maintained levels of human-caused mortality: 1) density of polar bears will track seal numbers; or 2) if earlier dates of break-up of sea ice do not allow enough time for bears to accumulate fat reserves required to endure fasting, declines in abundance may occur before or in the absence of observable declines in seal numbers. It is also important to note that not all segments of a polar bear population are expected to immediately decline in response to a reduction in food carrying capacity. In Western Hudson Bay, Regehr et al. (2007) communicated that prime adults were found to be in better body condition than other polar bears (E. Richardson, Canadian Wildlife Service, unpublished data, as cited in Regehr et al. 2007), possibly because of being more proficient than other age categories in catching seals or usurping kills from subordinates. This may explain why no association between survival of prime-aged adult females and males and earlier break-up of sea ice was detected by Regehr et al. (2007). For all other age classes, a statistical relationship between earlier break-up and decreased survival was shown.

Derocher et al. (2004) provide a synopsis of possible scenarios of changes in food availability to polar bears in the context of climate change, including the potential for climate warming to benefit some subpopulations, at least over the shorter term. This might apply to polar bears at the extreme northern edge of the species' range (e.g., Viscount Melville Sound, western Lancaster Sound, Norwegian Bay, Kane Basin, and the Arctic Basin), where low primary productivity and heavy, multi-year sea ice limits densities of and access to ringed seals (Kingsley et al. 1985). Even within areas of relatively close proximity, the impact of climate change might vary substantially. For example, during the period of decreased abundance of polar bears in Western Hudson Bay attributed to impacts of climate change (above, Sections 4.2 and 7.10), there was no observable decline in numbers of bears in Southern Hudson Bay (Section 7.11). Following a new analysis of mark-recapture data first presented in Kolenosky et al. (1992), researchers of the Government of Ontario reported that abundance of polar bears in Southern Hudson Bay was $1,058 \pm 220$ bears (mean \pm SE) in 1986, which does not differ from the estimate of $1,025 \pm 230$ bears in 2005 (M. Obbard, Ontario Ministry of Natural Resources, Government of Ontario, unpubl. data; PBTC 2006, 2007).

Although it remains uncertain as to how every subpopulation will respond to climate warming, it follows that there is a minimum period of at least annual sea ice (likely modified by factors such as prey availability) conducive to the presence of polar bears. Only rarely have polar bears been observed to kill seals while swimming in open water (Furnell and Oolooyuk 1980), and killing of seals and walrus when hauled out on land will likely never replace the advantage of killing seals from sea ice (Derocher et al. 2004). Polar bears do not live where there is not at least annual sea ice, but many species of seals do. Where climate warming eliminates annual (winter) sea ice or substantially increases the open-water season from maximum periods associated with areas of current occupancy by polar bears, there is no hope that polar bear numbers will remain viable.

6.2 Human-Caused Mortality

The most important proximate, limiting factor to the polar bear is presently human-caused mortality. In Canada this largely occurs through regulated hunting. For most age and sex groups, much of the annual mortality can be attributed to the known human-caused mortality (Section 5.1). Over-harvest is of major concern for some demographic units, particularly where there is outdated information on abundance or a lack of enforceable quotas (Section 9.3). In the past, some Canadian polar bear subpopulations have been over-hunted, with unfortunate examples coming from M'Clintock Channel (Taylor et al. 2006a) and the Viscount Melville Sound (Taylor et al. 2002). Today, substantially reduced mean rates of annual kill (34.0 bears [1979–1999] reduced to 2.1 bears [2001–2006] for M'Clintock Channel; 19.6 bears [1985–1990] reduced to 4.2 bears [2001–2006] for Viscount Melville Sound) are projected by simulations to have reversed trends in these subpopulations (Taylor et al. 2002, 2006a), although numbers remain severely reduced (Table 6, Sections 7.4 and 7.7).

The most important problems with over-hunting are for the subpopulations of Kane Basin and Baffin Bay (Sections 7.12 and 7.13), and Western Hudson Bay in the context of lowered natural survival rates and climate change (Section 7.10). Both the governments of Nunavut and Greenland have substantially increased their kill in Baffin Bay and Kane Basin in recent years (the 2005-2006 harvest of polar bears in Baffin Bay was 98 for Nunavut and 135 for Greenland; PBTC 2007). However, the Baffin Bay subpopulation was projected by Taylor et al. (2005) to be able to sustain an annual harvest of approximately 90 bears in 1997. Although Greenland has, as of January, 2006, instituted its first quota for polar bear hunting which should reduce the kill of polar bears in Kane Basin and Baffin Bay (West Greenland harvest is not to exceed 100 bears/year; PBTC 2006), reversal of what we expect to be severe population decline (Table 6) is not likely to have occurred. The current combined Nunavut/Greenland regulated harvest of polar bears in Kane Basin and Baffin Bay continues to be excessive (Table 6, Sections 7.12 and 7.13).

How human-caused mortality interacts with climate warming and impending changes to abundances of or access to seals is of considerable importance to the conservation of polar bears. Perhaps the most important impact of climate change on the manner in which polar bears are killed in Canada will come in the form of an anticipated increase in bear-human conflicts (Derocher et al. 2004; Stirling and Parkinson 2006). As alluded to in Section 6, reductions in food availability may result in increases in nutritionally stressed bears spending longer periods of time onshore, where humans live. Increases in problem bear activity in areas most affected by climate warming have been reported in

recent years, including the Southern Beaufort Sea (Schliebe et al. 2006) and Western Hudson Bay (McDonald et al. 1997; Stirling et al. 1999; Stirling and Parkinson 2006), and a positive interaction between climate warming and human-caused mortality may pose a serious problem. Stirling and Parkinson (2006) clearly show that for Western Hudson Bay, the earlier the ice breaks up the more problem bears there are in a year, and vice versa (see Figure 4 of Stirling and Parkinson [2006]). The perception of increased numbers of problem bears has also been voiced repeatedly by Inuit participants at meetings of the Federal/Provincial/Territorial Polar Bear Committee, and through collection of ATK (see Section 7). In some cases, higher numbers of problem bears may indicate higher abundance, an argument given for increasing hunting quotas in almost every subpopulation in Nunavut in 2005 (IUCN/SSC Polar Bear Specialist Group 2006); however, the best available scientific data support the notion that perceived higher numbers of bears is the result of bears coming off the ice in poorer condition and becoming problem animals in greater numbers due to earlier break-up of sea ice (see Stirling and Parkinson 2006).

6.3 Other Limiting Factors

As noted in Section 5.2, polar bears, like all ursids, kill and eat members of their own species, and intraspecific predation is a potential regulating factor (i.e., density-dependent limiting factor) for polar, brown, and black bears (Taylor 1994). As such, intraspecific predation would be expected to occur at a higher frequency when polar bear subpopulations are at relatively high density. It is unlikely that polar bear subpopulations as they exist today are approaching abundances that, at least in the past, would have been associated with population carrying capacity. However, intraspecific predation continues to be observed and recent, potential spikes in instances of intraspecific predation (e.g., Amstrup et al. 2006) suggest that, in areas most affected by climate change, carrying capacity of the environment has been lowered for polar bears. This hypothesis presents a plausible explanation for the purported link between climate warming and increased conflicts within the polar bear population, and may also explain recent instances of increased conflicts between humans and polar bears (Section 6).

Since the mid-1960s, exploration for energy and mineral reserves has led to an increased amount of industrial activity in the Arctic. Concerns about disturbance of bears at denning areas due to noise or construction have been voiced in recent interviews of ATK (Atatahak and Banci 2001; Keith et al. 2005), and new activity in the Arctic has the potential to increase killing of bears in defense of life or property. However, the primary threat to polar bears from industrial development may come from the potential for environmental contamination, especially large-scale oil spills. Oil is extremely toxic and potentially lethal to bears in even small amounts (Øritsland et al. 1981; Stirling 1990; Derocher and Stirling 1991). Although recent oil-spill simulations (Durner et al. 2001) suggest that relatively few bears in Canada (Southern Beaufort Sea) would encounter oil if a major spill occurred from existing operations, as climate change increases access to the polar basin we might anticipate increased risks to bears with development in the Canadian Arctic Archipelago. Extensive discovered and recoverable oil and gas reserves exist in Nunavut, including the 3.3×10^6 barrel (oil) and 17.4×10^8 ft³ (gas) reserves of the Sverdrup sedimentary basin (Drummond 2006), which overlap the subpopulations of Norwegian Bay, Lancaster Sound, Viscount Melville Sound, and Northern Beaufort Sea. Reserves of an additional 2.3×10^8 ft³ of natural gas occur in Baffin Bay (Drummond 2006). Continued development of the 1.0×10^7 barrel (oil) and

$9.7 \times 10^8 \text{ ft}^3$ (natural gas) petroleum reserves of the Beaufort Sea/Mackenzie Delta in the Northwest Territories (Drummond 2006) may put additional pressure on the Southern Beaufort Sea subpopulation of polar bears.

In recent years, significant levels of various contaminants (organochlorines and other persistent organic pollutants) have been documented in polar bear tissues or tissues of their prey, particularly adipose tissue (e.g., Born et al. 1991; Norstrom et al. 1988, 1998; Norstrom and Muir 1994; Bernhoft et al. 1996; Letcher et al. 1995; Henriksen et al. 2001; Kucklick et al. 2002; Oskam et al. 2004; Wolkers et al. 2004; Smithwick et al. 2005; Muir et al. 2006). Effects of various compounds in the tissues of polar bears or of the seals they feed on remains largely unknown. Although contaminant levels in some subpopulations correlate with impaired endocrine function (Skaare et al. 2001; Oskam et al. 2004), immune function (e.g., Bernhoft et al. 2000; Skaare et al. 2002; Lie et al. 2004, 2005), and potentially bone mineral composition (Sonne et al. 2004), there has been little demonstration of demographic effects from contaminants on polar bears (Amstrup 2003).

Inuit interviewed for ATK have recently expressed concerns that studies for scientific research, whereby bears are immobilized using drugs and helicopters and snowmobiles are used to capture bears, may cause displacement of bears or result in long-term, adverse physiological effects (McDonald et al. 1997; Atatahak and Banci 2001; Dowsley and Taylor 2006a; Dowsley 2005). However, Messier (2000), after analyzing 3,237 research handlings of polar bears for the period 1989–1997, concluded that long-term effects on polar bears of tagging and radio-collaring are largely negligible from the perspective of population dynamics. Nonetheless, polar bears are sometimes killed by accident during the course of scientific research. Messier (2000) reported that mortalities occurred at an average rate of 1 per 1000 bears handled for management and population studies. Risk of mortality was higher for more complex handling protocols associated with studies of physiology (28 bears per 1000 bears handled).

In all likelihood and within our lifetimes, due to climate warming, the Northwest Passage (recently renamed the Canadian Internal Waters by the Government of Canada) will remain open for increasing periods of time, making it attractive as a major shipping route. Routes from Europe to the Far East are reduced by as much as 4000 km by travel through the waterway, as compared to the route through the Panama Canal. Polar bears in the vicinity of this new shipping route may be exposed to traffic and levels of pollution that no subpopulation of polar bear has yet experienced. How they will respond to these cumulative effects is unknown.

7. POPULATION SIZE AND TRENDS

This section updates summaries presented in the previous COSEWIC report on the status of polar bears. It largely follows from submissions by participants of the Working Meeting of the IUCN/SSC Polar Bear Specialist Group (2006), including the authors of this report for text related to Section 7.1, Table 6, and summaries of Nunavut subpopulations. We also include recently collected ATK and information presented at the Federal/Provincial/Territorial Polar Bear Technical Committees of 2006 and 2007 (PBTC 2006, 2007).

The world's population of polar bears is estimated to number some 20,000–25,000 animals, of which approximately 15,500 are located in Canada or in subpopulations

shared with Canada (Table 6). Because several subpopulations are shared internationally and each is managed independently, it is difficult to meaningfully discuss dynamics of a single “Canadian population” of polar bears (Figure 2, Section 3.2). Table 6 summarizes for each subpopulation current estimates of abundance, harvest, and projections of trend where recent data on abundance and rates of survival and reproduction allow. Projections of trend are based on population viability analyses (PVA) using age- and sex-structured, stochastic population models presented for subpopulations using information on abundance, reproduction (Table 3), estimated harvest over the past 5 years, and estimated survival rates (Tables 4 and 5). Sections 7.2–7.14 present detailed information on the recent history and status of each Canadian subpopulation, including citations for data presented in Tables 3–6.

7.1 Status Table

Table 6 presents subpopulation sizes and uncertainty in estimates as ± 2 standard errors of the mean (SE). These estimates are based on scientific research using mark-recapture analysis (except where foot-noted). The years in which data were collected are presented to provide an indication of the current reliability of subpopulation estimates. Where >1 estimate of abundance was available, the 2 latest estimates are presented. Note, however, that a difference in abundance from a previous to a current estimate may not necessarily entail any real increase or decrease in abundance, but rather a correction from a past under- or over-estimate of abundance.

For most subpopulations, harvesting of polar bears is a regulated activity; hunting is by far the major cause of mortality for polar bears. In most jurisdictions, the total number of bears killed by humans in pursuit of sport and subsistence hunting, accident, and in defence of life or property are documented. Table 6 presents the 5-year means of known human-caused mortalities (removals) for each subpopulation (2001–2006).

For most subpopulations (8/13), recent quantitative estimates of abundance and parameters of survival and reproduction were available to determine likelihoods of future subpopulation decline using stochastic population viability analysis (PVA). We used the PVA model RISKMAN v. 1.9 (Taylor et al. 2003) to estimate risks of future declines in polar bear subpopulations given demographic parameters and uncertainty in data. The simulation model and documentation detailing the model’s structure is available from: <http://www.nrdpfc.ca/riskman/riskman.htm>. Recent publications using the RISKMAN PVA model include Dobey et al. (2005), McLoughlin et al. (2005), Wear et al. (2005), Clark and Eastridge (2006), and Howe et al. (2007).

RISKMAN is designed to incorporate uncertainty into population simulations at several levels, including sampling error in initial subpopulation size, variance about vital rates due to sample size and annual environmental variation (survival, reproduction, sex ratio), and demographic stochasticity. RISKMAN uses Monte Carlo techniques to generate a distribution of results, and then uses this distribution to estimate population size at a future time, projected mean annual finite rate of population increase over the period involved, and proportion of runs that result in population decline set at a predetermined level by the user. We adopted the latter to estimate the probability of persistence.

Our approach to variance in simulations was to pool sampling and environmental variances for survival and reproduction. We did this because: 1) variances for reproductive parameters often did not lend themselves to separating the sampling

component of variance from environmental variance; and 2) we were interested in quantifying the risks of subpopulation decline by including all sources of uncertainty in the data (i.e., pooling sampling error with environmental error generates more conservative outcomes of likelihood of persistence).

Individual runs could recover from 'depletion', but not from extinction. Simulations also assumed no immigration or emigration among subpopulations. Because estimates of likelihood of decline were calculated without consideration of metapopulation dynamics (in particular rescue effects between subpopulations), overall results are likely conservative in this sense (Hanski and Gilpin 1997).

Simulations are presented using rates of survival and reproduction that were estimated within the past 10 years, and therefore assume effects of climate change leading to today's climatic conditions only. RISKMAN does not incorporate effects of directional environmental or habitat change on demographic parameters. Thus, regardless of length of simulation (we use 45 years, below), results are relevant for near-term status assessment only. Note that although PVA results are likely relevant only for the next 5–10 years, a longer perspective for conducting simulations is needed to allow for age structure or sex-selective harvest anomalies to smooth, and to reduce effects of stochasticity associated with uncertainty (sampling error) in estimates of initial population size (which can dominate results of simulations over short time horizons).

We modelled PVA as the proportion of 2,500 simulation runs after 45 years (3 generations of polar bears as adopted by the IUCN/SSC Polar Bear Specialist Group using criteria shared by COSEWIC) resulting in: 1) any decline (in which case 1 minus this value is the likelihood of population increase) and; 2) a decline that is $\geq 30\%$ from initial population size. The latter is currently used by COSEWIC for distinguishing between Threatened and Special Concern status of designatable units (Appendix E3, COSEWIC Operations and Procedures Manual, draft dated April, 2005); however, as stated above, due to unknown effects of directional climate change on survival and recruitment, results should be used to interpret current and short-term likelihoods of decline only. Further, each modelled subpopulation is in itself not a Designatable Unit (Section 3.2). The projected finite rate of population increase ($\lambda \pm 1$ SE) for modelled subpopulations is also presented to illustrate trend. Note that persistence probabilities converge on a single percentage without error after running a large number of simulations ($>1,000$), and so no error estimate is applicable to likelihood of decline.

Required parameter and standard error inputs included: annual natural and/or total survival rates (stratified by age and sex as supported by the data; Tables 4 and 5), stratified rates of harvest if not using total survival rates (we used 5-year means; Table 6), data on reproduction (age of first reproduction, age-specific litter production rates for females available to have cubs [i.e., females with no cubs and females with 2-year-olds], and litter size; Table 3), and abundance (Table 6). We only used total survival rates (Table 4) if estimates were very recent and thus incorporated current harvest levels (i.e., those comprising the 5-year mean [2001–2006] for a subpopulation; Table 6). If harvest data had changed since collection of survival data, we modelled populations based on estimated natural survival (Table 5) from which the current age- and sex-stratified mortality was deducted.

The standing age distribution was female-biased for all subpopulations, likely due to harvesting of males. Because we wished to err on the side of caution, for all simulations

we used the stable age distribution expected for the subpopulation at the anticipated annual removal rate as the initial age/sex distribution (i.e., by initializing the subpopulation at the stable age distribution, more conservative outcomes were produced compared to runs initialized at the current standing age distribution).

7.2 Southern Beaufort Sea

The subpopulation of polar bears inhabiting the Southern Beaufort Sea is shared between Canada and the United States (Alaska). On the Canadian side of the border, the historical harvest of bears has been relatively light. The subpopulation experienced an increase in hunting activity in the late 1950s due to an increase in fur prices (Usher 1976); however, by the mid-1970s polar bears were only killed opportunistically during hunts for other species by Aklavik and Inuvik hunters (Usher 1976). Hunters of Tuktoyaktuk recall people from their community also hunting polar bears during this time (Frank Poliak, Chair, Inuvialuit Game Council, letter to COSEWIC Terrestrial Mammals Specialist Subcommittee, January 19, 2007). The Cape Bathurst area was reported to be an important area for hunting polar bears (Usher 1976). Today, polar bears are relatively rare in the Aklavik area, as suggested by little mention of the species in a recent ATK document on wildlife of the region (Wildlife Management Advisory Council [North Slope] and the Aklavik Hunters and Trappers Committee 2003). However, considering the distance of Aklavik to the coast, it is unclear whether the cursory mention of bears in the above document implies any decline in the historical abundance of polar bears of the Canadian portion of the Southern Beaufort Sea.

During the early 1980s, radio-collared individuals were tracked from the Canadian portion of the Southern Beaufort Sea into the eastern Chukchi Sea of Alaska (Amstrup et al. 1986; Amstrup and DeMaster 1988). Telemetry data combined with re-sightings of tagged individuals suggested that bears of the Southern Beaufort Sea comprised a single population with an eastern boundary between Paulatuk and Ballie Island, NWT, Canada, and a western boundary near Icy Cape, Alaska (Amstrup et al. 1986; Amstrup and DeMaster 1988; Stirling et al. 1988). Recognition that bears were shared by Canada and Alaska prompted the *Polar Bear Management Agreement for the Southern Beaufort Sea* (the *Agreement*). The *Agreement*, between the Inupiat hunters of Alaska and the Inuvialuit hunters of Canada, was ratified by both parties in 1988. The *Agreement* included provisions to protect bears in dens and females with cubs, and stated that the annual sustainable harvest from the Southern Beaufort Sea would be shared between the 2 jurisdictions. Harvest levels were to be reviewed annually in light of the best scientific information available (Treseder and Carpenter 1989; Nageak et al. 1994). Brower et al. (2002) evaluated the effectiveness of the *Agreement* after the first 10 years and concluded that, overall, it had been successful in ensuring that the total harvest and the harvest of adult females remained within what were thought to be sustainable limits.

Amstrup et al. (1986) estimated the size of the Southern Beaufort Sea subpopulation to be approximately 1,800 bears in 1983, with a minimum and maximum of 1,300 and 2,500 bears, respectively. Research incorporating mark and recapture and radio-telemetry has continued on a nearly annual basis through to the present time. Capture-recapture models applied to data collected from 2001 to 2006 suggest that there were 1,526 (95% CI 1,211–1,841) polar bears in the region in 2006 (Regehr et al. 2006).

Rates of survival and recruitment have recently been developed for bears of the Southern Beaufort Sea (Regehr et al. 2006; PBTC 2007; Tables 3–5). Given the current

combined US-Canadian harvest of bears in the Southern Beaufort Sea, it can be concluded that the population is likely declining at the present time (Table 6).

7.3 Northern Beaufort Sea

Studies of polar bears in the Northern Beaufort Sea have used telemetry and mark and recapture programmes at regular intervals since the early 1970s (Stirling et al. 1975, 1988; DeMaster et al. 1980; Lunn et al. 1995). Results suggested that there were separate subpopulations in the Northern and Southern Beaufort Sea areas and not a single subpopulation as was initially thought (Stirling et al. 1988; Amstrup 1995; Taylor and Lee 1995; Bethke et al. 1996). An abundance estimate of 1,200 polar bears in the late 1980s (Stirling et al. 1988) was believed to be unbiased, but is now dated. Abundance and demographic parameters for the subpopulation are currently being re-assessed (parameters were unavailable at the time of writing this report). Recent analyses, using data from satellite tracking of female polar bears and new spatial modelling techniques, indicate the boundary between the Northern Beaufort Sea and the Southern Beaufort Sea subpopulations needs to be adjusted, probably by expanding the area occupied by bears from Northern Beaufort Sea and reducing that of Southern Beaufort Sea (Amstrup et al. 2004).

Hunting of polar bears of the Northern Beaufort Sea has historically focused on the Amundsen Gulf (Usher 1976; Farquharson 1976), although the western coast and associated sea ice of Banks Island are also important for Inuit hunters (Usher 1976). Little ATK on the status of polar bears in this area has been recorded, but what is available supports this assertion. In a 2001 interview for the Paulatuuq Oral History project, an elder hunter suggested that the population in the area had been stable over the past 30 years (Parks Canada 2004).

Trend for this subpopulation is currently unknown, and projections cannot be conducted until recent estimates of abundance and vital rates are obtained (Table 6).

7.4 Viscount Melville Sound

Only in the past 30 years have polar bears of the Viscount Melville Sound experienced regular hunting pressure. Farquharson (1976) noted that by the mid-1970s, hunters from the Holman area had expanded their traditional hunting range to kill polar bears along the western and northern coasts of Victoria Island to Glenelg Bay. At the same time, Inuit from Cambridge Bay began travelling by land or air to reach northern Victoria Island to hunt polar bears. In response to increased interest in hunting bears of the Viscount Melville Sound, the Government of the Northwest Territories established quotas. When quotas were originally allocated in the 1970s, the size and productivity of the Viscount Melville Sound subpopulation was overestimated. Polar bear density is lower in Viscount Melville Sound compared to other regions because of large expanses of heavy, multi-year ice and low densities of ringed seals (Kingsley et al. 1985). The consequence of overestimating abundance when initially setting quotas was substantial over-harvest of bears in the region during the 1980s and early 1990s (e.g., 1985–1990 mean of 19.6 bears/year; Taylor et al. 2002).

A 5-year moratorium on hunting was enacted in 1994/1995. Hunting resumed in 1999/2000 with an annual quota of 4 bears. In 2004/2005 the annual quota was increased to 7 bears/year (Northwest Territories 4, Nunavut 3) to accommodate hunters

on both sides of the new territorial border. This subpopulation should be increasing under this harvest regimen (Table 6); however, it remains at historically low levels.

A 5-year study of movements and size of the Viscount Melville Sound subpopulation of polar bears using satellite telemetry and mark and recapture sampling was completed in 1992 (Messier et al. 1992, 1994; Taylor et al. 2002). Current boundaries are based on observed movements of females with satellite radio-collars and movements of bears tagged inside and outside of the study area (Bethke et al. 1996; Taylor et al. 2001). The published 1996 abundance estimate of 215 bears (SE = 58) in Taylor et al. (2002) was based on the 1993 estimate plus 3 years of simulated population growth. Polar bears in the Viscount Melville Sound are likely to benefit from a warming climate which may increase the abundance of and accessibility to seals by reducing amounts of multi-year ice.

7.5 Norwegian Bay

The polar bear subpopulation of Norwegian Bay is bounded by heavy, multi-year ice to the west, islands to the north, east, and west, and polynyas to the south (Taylor et al. 2001; Taylor et al. 2006b). Based on data from mark-recapture studies and satellite radio-tracking of adult females, it appears that most bears concentrate along coastal tide cracks and ridges in the northern, eastern, and southern regions of Norwegian Bay (Taylor et al. 2001). The preponderance of heavy, multi-year ice through most of the central and western areas contributes to low densities of ringed seals (Kingsley et al. 1985) and, consequently, low polar bear density. Grise Fiord hunters reported high concentrations of polar bears in Norwegian Bay during the early 1970s (Riewe 1976); however, based on unpublished data, the current (1993–97) estimate for this subpopulation is 190 bears (SE = 48.1; Taylor et al. 2006b). Estimates of survival rates (Tables 4 and 5) for Norwegian Bay are derived from pooled Lancaster Sound and Norwegian Bay data because these 2 subpopulations are adjacent and because the number of bears captured in Norwegian Bay was too small for reliable survival estimates (Taylor et al. 2006b). Risk of decline (Table 6) is higher for this subpopulation because of a relatively low rate of reproduction (Table 3) and low abundance; however, polar bears in Norwegian Bay are likely to benefit from a warming climate which may increase abundance of and accessibility to seals. The harvest quota for the Norwegian Bay subpopulation was reduced to 4 bears (3M:1F) in 1996 and remains at this level today.

7.6 Lancaster Sound

The central and eastern portion of the Lancaster Sound subpopulation is characterized by high productivity and thus high densities of ringed seals and polar bears (Schweinsburg et al. 1982; Kingsley et al. 1985; Welch et al. 1992). Inuit hunters of Resolute, Grise Fiord, and Arctic Bay have all historically hunted polar bears in Lancaster Sound (Brody 1976; Riewe 1976). The western third of this region (eastern Viscount Melville Sound) is dominated by heavy, multi-year ice and apparently low biological productivity, leading to low densities of ringed seals (Kingsley et al. 1985). In the spring and summer, densities of polar bears in the western third of the area are low; however, as break-up occurs, polar bears move west to summer on the multi-year pack.

Mark-recapture data and data on movements of adult females fitted with satellite radio-collars have been collected for bears of Lancaster Sound (Taylor et al. 2001, 2006b). The current abundance estimate of 2,541 bears (SE = 391) is based on an analysis of

mark-recapture data current to 1997 (Taylor et al. 2006b). This estimate is considerably larger than the 1979 estimate of $1,031 \pm 236$ bears (mean \pm 95% CI) published by Schweinsburg et al. (1982); however, given the substantial differences in study area boundaries between Schweinsburg et al. (1982) and Taylor et al. (2006b), it is difficult to compare estimates. Schweinsburg et al. (1982) focused on a much smaller area that extended into northern Baffin Bay, compared to the bounds used by Taylor et al. (2006b) and presented in Figure 2. Recent survival rates of polar bears Lancaster Sound are presented by Taylor et al. (2006b). Note that Taylor et al. (2006b) pooled the similar survival rates of Lancaster Sound with those of Norwegian Bay to minimize sampling errors (Tables 4 and 5).

7.7 M'Clintock Channel

The current boundaries for the M'Clintock Channel subpopulation are based on recoveries of tagged bears and movements of adult females with satellite radio-collars in adjacent areas (Taylor and Lee 1995; Taylor et al. 2001). These boundaries appear to be a consequence of large islands to the east and west, the mainland to the south, and the heavy, multi-year ice in Viscount Melville Sound to the north. A 6-year mark-recapture study in the mid-1970s covered most of this area (Furnell and Schweinsburg 1984). An estimate of 900 bears was derived from data collected within the boundaries proposed for the M'Clintock Channel subpopulation from results of Furnell and Schweinsburg (1984), who identified an abundance estimate of 1,100 animals for an area that overlapped both M'Clintock Channel and the Gulf of Boothia. After the study was published, local hunters suggested the estimate of 900 animals may have been too high; hence, the Federal/Provincial/Territorial Polar Bear Technical Committee accepted a recommendation to reduce the abundance estimate to 700 bears (M.K. Taylor, Department of Environment, Government of Nunavut), which would have been current to 1978 (i.e., the last year of Furnell and Schweinsburg's sampling program). No accurate confidence intervals are available for this estimate.

Following completion of a mark-recapture inventory in spring of 2000, the subpopulation was estimated to number only 284 bears (SE = 59.3; Taylor et al. 2006a). The legal harvest (averaging 34.0 bears/year from 1979–1999) for M'Clintock Channel was clearly unsustainable. The Government of Nunavut implemented a moratorium on hunting for the 2001/2002 and 2002/2003 hunting seasons. The current annual quota for M'Clintock Channel is 3 bears and the population is now likely growing (Table 6); however, the subpopulation remains at risk due to low abundance.

Scientific data which suggests low abundance of polar bears in M'Clintock Channel due to over-harvest is supported by ATK. Recently, hunters of Gjoa Haven reported that the number of bears near their community has declined over the past 30 years (Keith et al. 2005). Other areas where decreased numbers of polar bears have been reported include the Royal Geographical Society Islands, Pasley Bay, northern King William Island, Gateshead Island, Larsen Sound, and the M'Clintock Channel itself (Atatahak and Banci 2001). Inuit suggest that polar bears are no longer present in the Queen Maud Gulf area (Keith et al. 2005). Inuit hunters also report a decline in the number of adult male bears in M'Clintock Channel but that large males can be found further to the north (Atatahak and Banci 2001; Keith et al. 2005). This finding is consistent with what one could expect from a relatively heavy, male-biased hunt. Northern M'Clintock Channel is the recent focus of the polar bear hunt out of Gjoa Haven (Keith et al. 2005).

In addition to unsustainable harvesting, recent changes in habitat and disturbance by humans have been identified by Inuit as potential reasons for the reduced abundance of bears in M'Clintock Channel (Keith et al. 2005). One noted habitat change has been the recent absence of heavy, multi-year ice and icebergs, although this may offer improved habitat for ringed seals and so may not necessarily be detrimental to polar bears. Human disturbances such as the construction of DEW (Distant Early Warning) line sites, construction of Inuksuit, and noise from aircraft and snowmobiles are also thought to have contributed to the low density of bears around Gjoa Haven (Keith et al. 2005).

7.8 Gulf of Boothia

Boundaries of the subpopulation of polar bears inhabiting the Gulf of Boothia was largely based on movements of tagged bears (Taylor and Lee 1995), movements of collared females in the Gulf of Boothia and adjacent areas (Taylor et al. 2001), and information from Inuit hunters about how local conditions influence the movements of polar bears. Distinction between the Gulf of Boothia and M'Clintock Channel subpopulations of polar bears has, however, recently been questioned by Inuit hunters (Keith et al. 2005), and new genetic analyses (Saunders 2005) suggest considerable interchange between the subpopulations.

Hunting in the Gulf of Boothia increased from historic levels through the 1970s (Brice-Bennett 1976); however, unlike the situation in Viscount Melville Sound and M'Clintock Channel, the original quota established by the Government of the Northwest Territories in the Gulf of Boothia was likely less than the maximum sustainable yield. Local hunters reported that the subpopulation increased during the 1980s after results of Furnell and Schweinsburg (1984) suggested abundance at around 300 bears (considering that portion of the Gulf of Boothia included in their study area). Based on Inuit knowledge, recognition of past sampling deficiencies, and an increased understanding of polar bear densities in other areas, the interim subpopulation estimate in the 1990s for the Gulf of Boothia was 900 bears (M.K. Taylor, Department of Environment, Government of Nunavut). Following completion of a mark-recapture inventory in spring of 2000, the subpopulation was estimated to number 1,528 bears (SE = 285; Taylor et al. 2006c). Recruitment and survival rates (Tables 3–5) were estimated to be relatively high. The subpopulation is considered to be growing (Table 6), and in 2005 harvest quotas were increased by the Government of Nunavut to 74 bears/year. Hunting success rates are reported to be high (personal communication of Kotierk [2005]).

7.9 Foxe Basin

Based on 12 years of mark-recapture studies, tracking of female bears with conventional radios, and satellite tracking of adult females in Western and Southern Hudson Bay, the Foxe Basin subpopulation is thought to comprise a demographic unit in Foxe Basin, northern Hudson Bay, and the western end of Hudson Strait (Taylor and Lee 1995). During the ice-free season, polar bears concentrate on Southampton Island and along the Wager Bay coast; however, significant numbers of bears also occur on the islands and coastal regions throughout the Foxe Basin area. A total abundance estimate of 2,119 (SE = 349) was made in 1996 (M.K. Taylor, Department of Environment, Government of Nunavut, unpubl. data) from a mark-recapture analysis based on tetracycline biomarkers (Taylor and Lee 1994; M.K. Taylor, Department of Environment, Government of Nunavut, unpubl. data). The marking effort was conducted during the ice-free season, and distributed throughout the entire area. The abundance estimate is

believed to have been accurate, but is now dated. Simulation studies suggest that harvest quotas prior to 1996 reduced the subpopulation from approximately 3,000 in the early 1970s to 2,100 bears in 1996. Harvest levels were reduced in 1996 to permit recovery of this subpopulation, provided that harvest in Québec did not increase.

Recent ATK suggests that the subpopulation of Foxe Basin has increased since 1996 (McDonald et al. 1997). For example, at Southampton it has become not unusual for hunters to fill their quota in a matter of days (McDonald et al. 1997). However, ATK from the Ivujivik area indicates a decrease in polar bear numbers. One hypothesis proposed to explain this observation is that ocean currents in the region are now weaker, allowing bears to become distributed more evenly on the ice during mid-winter rather than congregating at the mouth of Hudson Strait (McDonald et al. 1997). After consultations with native communities, Nunavut increased the harvest quota in 2004 to a level consistent with a subpopulation size of 2,300 bears (109 bears/year). Co-management discussions with Québec are ongoing. Effects of climate change on the Foxe Basin subpopulation of polar bears have not been evaluated scientifically.

7.10 Western Hudson Bay

The distribution, abundance, and boundaries of the Western Hudson Bay subpopulation of polar bears have been studied since the late 1960s (e.g., Stirling et al. 1977; Derocher and Stirling 1990, 1992, 1995a,b; Taylor and Lee 1995; Lunn et al. 1997, 2006). Between 60–80% of adults have been marked at any given time and there are extensive records from mark-recapture studies and the return of tags from bears killed by Inuit hunters, and from the ongoing and long-term Polar Bear Alert Program of the Government of Manitoba. This population appears to be geographically segregated during the open-water season, although it mixes with those of Southern Hudson Bay and Foxe Basin on the Hudson Bay sea ice during the winter and spring (Stirling et al. 1977; Derocher and Stirling 1990; Stirling and Derocher 1993; Taylor and Lee 1995).

Over the past 30 years, the condition of adults and the proportion of independent yearlings caught during the open-water season have declined significantly in Western Hudson Bay (Derocher and Stirling 1992, 1995b; Stirling and Lunn 1997; Stirling et al. 1999; N. Lunn and I. Stirling, unpubl. data presented in IUCN/SSC Polar Bear Specialist Group 2006). Over the same period, the average date of break-up of the sea ice has advanced by 3 weeks (Stirling et al. 1999, 2004; Ferguson et al. 2005), probably due to increasing spring air temperatures (Section 6.1). Stirling et al. (1999) documented a significant correlation between the timing of break-up and the condition of adult females (the earlier the break-up the poorer the condition of the bears).

The number of polar bears in Western Hudson Bay has declined from 1,194 (95% CI = 1,020–1,368) to 935 (95% CI = 794, 1,076) between 1987 and 2004, a reduction of approximately 22% (Regehr et al. 2007). Progressive declines in the condition and survival of cubs, subadults, and bears 20 years of age and older likely initiated decline in the size of the subpopulation. It is believed that once the subpopulation began to decline, the existing harvest was no longer sustainable so that its additive contribution to the reduction in the size of the subpopulation accelerated between 1988 and 2004. The harvest sex ratio of 2M:1F in Western Hudson Bay has resulted in a sex ratio that is 58% female and 42% male (Derocher et al. 1997).

Concurrently but contrary to the scientific re-assessment of abundance, Inuit along the western coast of Hudson Bay reported seeing greater numbers of polar bears, which they interpreted as evidence of an increasing population (McDonald et al. 1997; Dowsley and Taylor 2006b). Polar bears have been reported as numerous at Chesterfield Inlet in September and have been increasing in that area since 1988. Bears have been present for several years near Arviat, from September to December, but have recently increased in number according to ATK, especially in September.

Nunavut Tunngavik Incorporated (NTI) recently collaborated with 5 experienced hunters from communities in Western Hudson Bay to complete a series of interviews and a workshop (NTI 2005). While the final analysis and report are not yet complete, the ATK data indicate an increasing number of bears in the Arviat area since the 1970s, and around Whale Cove and Rankin Inlet since the 1980s. This has also been noted by Inuit of Chesterfield Inlet. In Arviat, the recent increase has been noted in all seasons except winter, while Inuit of other areas report an increase in all seasons. In the Chesterfield Inlet area, groups (gatherings) of polar bears have been observed recently, something that was apparently rare in the past.

In December, 2004, Nunavut increased its polar bear quota in Western Hudson Bay by 9 bears based on ATK. In order to sustain this increased level of harvest, the size of the Western Hudson Bay subpopulation would have to be at least 1,400 bears. However, an alternative explanation for hunters seeing more bears around settlements and hunting camps in recent years is that, because the condition of bears has been declining due to the earlier break-up annual sea ice, they have less time to deposit fat reserves that they depend on during the open water season (Sections 6.1 and 6.2). The fat stores of some bears, especially subadults, may be becoming depleted prior to freeze-up so that bears seek alternate food sources and hence are seen more often around human settlements. In agreement with this observation, observers in several communities of Western Hudson Bay, including Whale Cove and Chesterfield Inlet, have reported leaner bears and an increase in bear aggression and attacks on property (McDonald et al. 1997).

Climate change in connection with over-harvest resulting from a reduction in food carrying capacity is the major threat to the Western Hudson Bay subpopulation. Despite ATK assertions to the contrary, the best scientific evidence suggests the subpopulation is now declining at a substantial rate (Table 6).

7.11 Southern Hudson Bay

Inuit hunting the Southern Hudson Bay subpopulation of polar bears reported an increase in the number of bears that have historically occurred in the area (McDonald et al. 1997). The offshore islands of eastern Hudson Bay apparently had no bears 50 years ago, and the species was rare around Inukjuak, only appearing 'recently' (McDonald et al. 1997). Similarly, in Sanikiluaq, it was rare to kill a polar bear in the 1960s but now the community's annual quota is filled in approximately 3 weeks, with increased observations of bears coming into the community (personal communication of Arragutainaq [2006]). Cree in western James Bay report increased aggressiveness among bears and an increase in litter size (McDonald et al. 1997). Communities along the Hudson Bay and James Bay coasts in Ontario report an increase in bear encounters and property damage caused by polar bears (personal communications of Carpenter [2006]; Solomon [2006]; Kapashesit [2006]). In the past 5 years, polar bears have also

been observed to travel more frequently during the open water season all the way to the Moosonee area of southern James Bay (approximately 1 sighting per year). Previously, bears were observed around Moosonee roughly once in 5 or 6 years (personal communications of Kapashesit [2006]; Solomon [2006]). Explanations offered for observations of higher numbers of bears include potential immigration of bears in response to increased ringed seals in the region, an extended ice floe in the area, and hunting quotas below the maximum sustainable yield.

Boundaries of the Southern Hudson Bay subpopulation of polar bears are currently based on data from movements of marked bears and telemetry studies (Jonkel et al. 1976; Kolenosky and Prevett 1983; Kolenosky et al. 1992; Taylor and Lee 1995); however, recent analyses question the validity of any genetic distinction between the subpopulations of Southern Hudson Bay, Western Hudson Bay, Foxe Basin, and Davis Strait (Crompton 2004). Field work aimed at refining the boundaries of this subpopulation and estimating rates of birth and death has recently been completed, but the results are not available (M. Obbard, Ontario Ministry of Natural Resources Government of Ontario). A new mark-recapture abundance estimate has, however, been reported (Table 6; PBTC 2006, 2007).

Preliminary data (M. Obbard, Ontario Ministry of Natural Resources, Government of Ontario, unpubl. data; PBTC 2006, 2007) suggest that contrary to results coming from Western Hudson Bay (Section 6.1, 7.10)—although not suggesting an increase consistent with ATK (above)—there has been no observable decline in abundance of polar bears in Southern Hudson Bay since the 1980s. A recent analysis of data presented in Kolenosky et al. (1992) using new mark-recapture software estimated abundance of polar bears in Southern Hudson Bay as $1,058 \pm 220$ bears (mean \pm SE) in 1986, which does not differ from the estimate of $1,025 \pm 230$ bears in 2005 (M. Obbard, Ontario Ministry of Natural Resources, Government of Ontario, unpubl. data; PBTC 2006, 2007). Stirling et al. (2004), in their recent analysis of coastal survey data, also suggested that the abundance of polar bears in Southern Hudson Bay has remained unchanged in recent years.

Stirling et al. (1999) contend that climate-related reductions in sea ice appear to have resulted in declines in body condition and in reproduction in the adjacent Western Hudson Bay subpopulation of polar bears (Sections 6.1 and 7.10). A similar pattern of decline in body condition was documented for the Southern Hudson Bay subpopulation when comparing bears captured in 1984–1986 with those captured in 2000–2004 (Obbard et al. 2006; PBTC 2006). Lucassie Arragutainaq of Sanikiluaq reported in August, 2006 (Arragutainaq 2006) that, although the animals look healthy and have nice fur, the fat of polar bears in the area no longer has the same consistency as in years previous. Although overall abundance in Southern Hudson Bay appears to have been stable since the 1980s, it is unknown to what extent changes in body condition might impact demographic parameters and thus abundance in the future. Until demographic rates are known for this subpopulation, projections of trend cannot be made.

7.12 Kane Basin

Based on movements of adult females equipped with satellite radio-collars and recaptures of tagged animals, the boundaries of the Kane Basin subpopulation include the North Water Polynya (to the south), and Greenland and Ellesmere Island to the west, north, and east (Taylor et al. 2001). Polar bears in Kane Basin do not differ genetically

from those in Baffin Bay (Paetkau et al. 1999; Tables 1 and 2). Prior to 1997, this subpopulation was essentially unharvested in Canadian territory because of its distance from Grise Fiord, the closest Canadian community, and because conditions for travel in the region are typically difficult. However, bears from this subpopulation have occasionally been harvested by hunters from Grise Fiord (since 1997) and harvest continues on the Greenland side of Kane Basin. In some years, Greenland hunters also harvest polar bears in western Kane Basin and Smith Sound (Rosing-Asvid and Born 1990).

Few polar bears were encountered along the Greenland coast between 1994 and 1997, possibly because of harvest pressure by Greenland hunters. The current and only estimate of the Kane Basin subpopulation is 164 bears (SE = 35; Taylor et al. 2007). The best estimate of the Greenland kill is 10 bears/year during 1999–2003 (Born 2005; Born and Sonne 2005). However, the actual number being taken by Greenland hunters is uncertain (Rosing-Asvid 2002; Born and Sonne 2005) and needs to be validated. The Canadian quota for this subpopulation is 5 bears/year. The annual combined Canadian and Greenlandic take of 10–15 bears from this subpopulation is unsustainable (Table 6). Although the habitat appears suitable for polar bears on both the Greenland and Canadian sides of Kane Basin, the density of bears on the Greenland side is much lower than on the Canadian side.

Co-management discussions regarding the hunting of polar bears have been ongoing between Greenland and Canada. Greenland enacted a quota system on January 1, 2006 (West Greenland harvest is not to exceed 100 bears/year, PBTC 2006); however, because Kane Basin, Baffin Bay (Section 7.13), and Davis Strait (Section 7.14) are treated as a single unit for management purposes by Greenland, it is unclear whether reductions in the harvest of bears in Kane Basin will result from the establishment of this quota. The mean kill of polar bears in Kane Basin has been 10 bears/year for hunters of Greenland in recent years, and <1 for hunters of Nunavut (PBTC 2006).

7.13 Baffin Bay

Based on movements of adult females equipped with satellite radio-collars and recaptures of tagged animals, the area in which the Baffin Bay subpopulation occurs is bounded by the North Water Polynya to the north, Greenland to the east, and Baffin Island to the west (Taylor and Lee 1995; Taylor et al. 2001). A relatively distinct southern boundary at Cape Dyer (Baffin Island) is evident from the movements of tagged bears (Stirling et al. 1980) and recent movement data from polar bears monitored by satellite telemetry (Taylor et al. 2001). A study of micro-satellite variation did not reveal any genetic differences between polar bears in Baffin Bay and Kane Basin, although bears of Baffin Bay differed significantly from those of Davis Strait and Lancaster Sound (Paetkau et al. 1999; Tables 1 and 2). An initial subpopulation estimate of 300–600 bears was made by the Government of the Northwest Territories from mark-recapture data collected in spring of 1984–1989. However, recent work has since shown that an unknown proportion of the subpopulation was typically offshore during the spring and, therefore, unavailable for capture. A second study (1993–1997) was carried out annually during the months of September and October, when all polar bears were on shore in summer retreat areas on Bylot and Baffin islands (Taylor et al. 2005). Taylor et al. (2005) estimated the number of polar bears in Baffin Bay (1998 estimate) at 2,074 bears (SE = 266).

The Baffin Bay subpopulation of polar bears is shared with Greenland, which until January, 2006, did not limit the number of bears killed in a year. Based on mark-recapture sampling, Taylor et al. (2005) estimated the Greenland annual removal at 18–35 bears for the period 1993–1997. However, Born (2002) reported that the estimated Greenland average annual catch of polar bears from Baffin Bay was 73 bears/year over the period 1993–1998. Greenland documents that the average kill by Greenland hunters in Baffin Bay for the period 2001–2006 was 135 bears/year (range: 97–206 bears/year; PBTC 2007).

The 2004 estimate of <1,600 bears is based on population simulations that employed the pooled Canadian and Greenland harvest records since 1998 (Table 6; PBTC 2006, 2007). Greenland adopted a quota system effective January 1, 2006, which should see the elimination of extremely high harvests like that of 2002/2003 (206 polar bears). However, assuming that 80-85 bears taken per year in Baffin Bay will comprise the 100-bear West Greenland quota (historical Greenlander harvest of bears in Kane Basin and Davis Strait has been 10 and 5-10 bears, respectively [PBTC 2006]), the current Nunavut-Greenland harvest will equal approximately 185 bears/year. Simulations suggest that this level of hunting will continue to deplete the subpopulation (Table 6, Taylor et al. 2005).

Contrary to scientific estimates and similar to the situation in Western Hudson Bay (Section 7.10), Inuit have reported higher abundances of polar bears in Baffin Bay in recent years. ATK from 3 Baffin Bay communities (Pond Inlet, Clyde River and Qikiqtarjuaq) indicates that hunters and residents have been seeing more polar bears on the land and around communities in the past few years compared to 10–15 years ago (Dowsley 2005). Significantly more people in the 2 northern communities experienced this increase compared to people in Qikiqtarjuaq (Dowsley 2005). Bear encounters have increased, especially in Pond Inlet and Clyde River, and safety concerns have grown, as well as concerns about damaged property (Dowsley and Taylor 2006a). In response to community suggestions that polar bears increased in abundance in recent years, the Government of Nunavut increased its quota in Baffin Bay from 64 to 105 bears in December of 2004.

Despite the above, the best available scientific information suggests the Baffin Bay subpopulation is substantially over-harvested. The discrepancy between ATK and scientific data regarding the trajectory of the Baffin Bay subpopulation of polar bears is a matter of concern. Local observations of increased abundance may again be due to higher levels of bear activity in response to increased time spent on-shore by polar bears in response to climate warming in the region (Sections 6.1 and 6.2). Movements inland during summer have apparently increased in places in recent years. For example, Inuit have reported that during the open water season bears can be found much farther into Eclipse sound, up the fiords and inlets where they did not previously occur (Dowsley 2005). Further, all 3 Baffin Bay communities have reported climate change impacts on the sea ice, such as less shore-fast ice, fewer icebergs and thinner ice, which some people (5/12 people who discussed the idea) thought might contribute to changes in polar bear distribution (Dowsley 2005; Dowsley and Taylor 2006a).

7.14 Davis Strait

Based on movements of tagged animals and, more recently, of adult females with satellite radio-collars, the Davis Strait subpopulation is comprised of bears from the

Labrador Sea, eastern Hudson Strait, Davis Strait south of Cape Dyer, and along the eastern edge of the Davis Strait-southern Baffin Bay pack ice (Taylor et al. 2001). When bears occur in the latter area they are subject to hunting by Greenlanders (Stirling and Kiliaan 1980; Stirling et al. 1980; Taylor and Lee 1995; Taylor et al. 2001).

The initial subpopulation estimate of 900 bears for Davis Strait (Stirling et al. 1980) was based on a subjective correction from a mark-recapture estimate of 726 bears, which was felt to be too low. In 1993, the Federal/Provincial/ Territorial Polar Bear Technical Committee increased the estimate to 1,400 bears to account for bias in sampling created by the inability of researchers to survey the extensive area of offshore pack ice (M.K. Taylor, Department of Environment, Government of Nunavut). A population inventory by the Governments of Nunavut and Newfoundland and Labrador commenced in 2005. Following 2 years of mark-recapture sampling, a sex/age stratified Lincoln/Peterson estimate of 2,100 bears was developed (Peacock et al. 2006), which is presented in Table 6. No confidence limits are available for this estimate. The population inventory that was begun in summer of 2005 will conclude in summer 2007. Rates of survival and recruitment and final abundance estimates with confidence intervals will be available sometime in 2008.

Within Canada, bears of Davis Strait have traditionally been harvested by Inuit from Nunavut, Québec, and Labrador (e.g., Kemp 1976; Val 1976; Brice-Bennett 1977; Brazil and Goudie 2006). The combined harvest by these jurisdictions averaged 58.6 over the past 5 years (Table 6). The Greenland take for this subpopulation remains relatively low (1–11 bears/year in the past 5 years; PBTC 2007). Co-management discussions between Greenland and Canada are continuing, and Greenland has indicated its quota for Davis Strait will be 2 bears/year.

Qualitative observations from elders with considerable knowledge of polar bears in Nain indicated that abundance in Davis Strait was higher now than in the past (Nunatsiavut Government 2006); however, these elders also report that polar bear distribution has changed from primarily coastal and off shore areas to now also include the inland portions of bays (which freeze first), so that bears occur farther inland than previously. How climate change may be impacting polar bears in Davis Strait, and whether Inuit suggestions of higher abundances may contradict scientific estimates of trends in abundance as in Western Hudson Bay and the adjacent Baffin Bay, is unknown.

8. SPECIAL SIGNIFICANCE OF THE SPECIES

The polar bear is the only terrestrial carnivore to occupy the highest trophic level of a marine ecosystem. The species has evolved unique adaptations to hunt seals from a sea-ice platform. Polar bears are of great cultural significance to the Canadian people, and are also important spiritually and economically to northern native peoples. As a symbol of the pristine Arctic environment, polar bears are seen throughout the world as a barometer of important environmental issues, especially climate change and pollution. Canada has national and international responsibilities with respect to the study, management, and protection of polar bears. This obligation is particularly important to our nation because we collectively manage 55–65% of the world's polar bears.

9. EXISTING STATUS DESIGNATIONS AND PROTECTIONS

9.1 International Status Designations and Protections

Internationally, polar bear research and management are coordinated under the *Agreement on the Conservation of Polar Bears* which was signed in November, 1973, and came into effect on May 26, 1976 (also see Stirling 1988a; Prestrud and Stirling 1994). It prohibits unregulated sport hunting of polar bears and obliges each signatory to conduct research relating to the conservation and management of the species, the results of which are conveyed to each member nation. Member scientists of the Polar Bear Specialist Group meet every 3 to 4 years under the auspices of the IUCN World Conservation Union to coordinate research throughout the Arctic. Although responsibility for management of polar bears in Canada lies with the provinces and territories, the federal government on behalf of all jurisdictions signed the *Agreement*. Under the terms of the *Agreement*, the taking of polar bears is restricted to “local people” (which is interpreted in Canada to mean aboriginal people or sport hunters guided by aboriginal people) who harvest by traditional means and in accordance with sound conservation practices based on the best available scientific data. This *Agreement* was renewed indefinitely in 1981.

The polar bear was moved into a status of Vulnerable from the status of Least Concern for the 2006 Red List of the Species Survival Commission (SSC) of the IUCN-The World Conservation Union (IUCN/SSC Polar Bear Specialist Group 2006; IUCN 2006). This move was in response to recent modelling of trends in sea ice extent, thickness, and timing of coverage which predicts dramatic reductions in sea ice coverage over the next 50 to 100 years due to climate warming (IUCN 2006), and recent demonstrations of and hypothesized impacts on polar bears (see Sections 4.2, 6 and 7). The reassessment was based on an expected worldwide reduction in polar bear numbers of at least 30% over the next 45 years (3 generations for polar bears), manifest in declines in area of occupancy and extent of occurrence (IUCN/SSC Polar Bear Specialist Group 2006).

Polar bears are listed under Appendix II of CITES (*Convention on International Trade in Endangered Species of Wild Flora and Fauna*). Under CITES, any international shipment of polar bears or parts thereof requires a permit. Since July, 1975, a permanent record of all polar bears, hides, or any other products legally exported from or imported to Canada has been maintained by the Government of Canada.

In 1994, the U.S. government passed an amendment to the *Marine Mammal Protection Act* of 1972 which made it legal for U.S. hunters to import hides of polar bears taken in guided non-resident hunts in Canada, provided certain criteria are met. The ability to import hides of legally killed polar bears from Canada into the United States has resulted in an increased level of interest from American hunters in guided hunts. Currently, 6 subpopulations in Canada have qualified under the U.S. Fish and Wildlife Service (USFWS) criteria for approval. These include the Southern Beaufort Sea, Northern Beaufort Sea, Viscount Melville Sound, Lancaster Sound, Norwegian Bay, and Western Hudson Bay. The USFWS is presently undergoing a review of the status of the polar bear under the U.S. *Endangered Species Act*, with the current recommendation to uplist the species to Threatened status. If this occurs, sport hunting of polar bears in Canada by U.S. citizens will cease.

9.2 Canadian Status Designations and Protections

Conservation and management of polar bears in Canada involves more than 10 agencies: 4 provinces, 3 territories, the federal government, plus the management boards established by land settlement claims. Discussion between jurisdictions to facilitate management decisions is co-ordinated by their Wildlife Directors and the Federal/Provincial/Territorial Polar Bear Technical Committee (PBTC). The PBTC includes biologists from each jurisdiction and invited experts from user groups and other research organizations (such as universities) who have expertise with ATK or scientific research on polar bears. Each year, the PBTC discusses the most recent research results to make recommendations on protection measures for the species to senior administrators and user groups.

In Canada, the PBTC conducts an annual review of the status of each subpopulation of polar bears and its sustainable harvest, and monitors the annual kill. The sustainable harvest of independent female polar bears (i.e., 2 years of age and older) for each subpopulation was, in the mid-1980s, estimated to be about 1.5% for most subpopulations (Taylor et al. 1987). This estimated sustainable yield, which includes a flexible-quota system to maintain an average 2M:1F sex ratio of the harvest, has been the basis for assigning harvests for most subpopulations in Canada for the past 15 years (see Taylor et al. 2006d).

How harvests are currently allocated among subpopulations is a matter of intense debate. For example, the Government of Nunavut recently increased the combined harvest quota for the 12 subpopulations of Nunavut bears found within the territory from 403 in 2004 to 518 in 2005, largely based on the perception by Inuit that some subpopulations increased under the historical harvest regimen (IUCN/SSC Polar Bear Specialist Group 2006; PBTC 2006). Although some increases in quotas have been supported by the findings of mark-recapture analyses (e.g., Gulf of Boothia; Taylor et al. 2006c), quota increases based on Inuit perceptions have also included harvests for subpopulations documented by western science to be in steep decline (e.g., Western Hudson Bay and Baffin Bay, see Sections 6, 7.10, and 7.13). Why this occurred is cause for concern for polar bear conservation.

Within Canada, while the governments of the provinces and territories have the authority for management, the decision-making process for some is shared with aboriginal groups as part of the settlement of land claims. In most Canadian jurisdictions, hunting seasons, quotas, and protection of family groups are enforced by law; only Manitoba prohibits the hunting of polar bears. Over 80% of the hunting of polar bears in Canada occurs in Nunavut and the Northwest Territories, where management agreements and/or memoranda of understanding have been developed with local communities with the aim to ensure that all human-caused mortality is within the suggested sustained yield.

In Manitoba, polar bears are protected under the *Wildlife Act* and there is no hunting season. This designation also removes the right to kill polar bears under aboriginal treaty rights. Bears may only be killed in defense of life or property.

In Ontario, only aboriginal people under Treaty #9 and interpreted as residing along the Hudson Bay and James Bay coast are permitted to hunt polar bears. Harvest reporting is voluntary in Ontario but is considered to be generally reliable because polar bear skins may not be sold until they have been sealed by the province. Quotas do exist for each

community that harvests polar bears and quotas can be enforced through denial of seals to enable legal sale of hides and carrying over of seals to the next harvesting year; however, quotas are based on dated and inaccurate information and assumptions (M. Obbard, Ontario Ministry of Natural Resources, Government of Ontario, letter to COSEWIC Terrestrial Mammals Specialist Subcommittee, February 1, 2007). Females with cubs of the year and bears in dens are not protected in Ontario, although dens are.

In Québec, the polar bear is listed as “likely to become threatened or vulnerable,” according to the *Liste des Espèces Fauniques Menacées ou Vulnérables au Québec*, and legal designation is under review at the time of writing. Notwithstanding the potential for future changes in provincial designation, under the *James Bay Agreement* Inuit are allocated a “guaranteed harvest” of 62 bears annually. This means that the first 62 bears of an estimated sustainable harvest would be reserved for the exclusive use of aboriginal people. This number is subject to conservation limitations, however, so if the sustainable level was determined to be less than 62, the lower number would prevail and all the animals taken would be guaranteed for aboriginal use only. The guaranteed harvest level was determined solely from harvest statistics and was not based on an estimate of sustainable yield from a population estimate. The *James Bay Agreement* was signed in 1975, before it was realized that aboriginal hunters from Québec harvested bears from 3 different subpopulations (i.e., Southern Hudson Bay, Foxe Basin, and Davis Strait). There are no quotas currently in effect in Québec although aboriginal hunters have agreed to limit harvesting to current levels until assessments are done for the 3 subpopulations from which they harvest bears. When assessments have been completed and sustainable harvests have been determined, Québec hunters are expected to enter into co-operative management agreements with other user groups that share each subpopulation. Females with cubs of the year and bears in dens are not protected by legislation in Québec (because no provision was made for this in the *James Bay Agreement*), but there is local agreement among hunters not to kill these bears.

In Newfoundland and Labrador, Inuit have exclusive rights to harvest 6 bears/year (males and females without cubs) under a quota system along the Labrador coast (see Brazil and Goudie 2006). The killing of bears by anyone for any other purpose, other than defense of life and property, is prohibited. The polar bear is listed as Vulnerable under the *Newfoundland and Labrador Endangered Species Act*. This designation requires the development of a management plan (Brazil and Goudie 2006) and it allows for the development of additional regulations for the protection of polar bears, if deemed necessary for conservation purposes. It is planned that in the near future polar bear issues will be managed through the Torngat Wildlife and Plants Co-Management Board comprised of Inuit and federal and provincial government representatives. Management of polar bears in the Torngat Mountains National Park Reserve will be coordinated through a Co-operative Management Board as part of the *Labrador Inuit Park Impacts Agreement for the Torngat Mountains National Park Reserve*.

9.3 Risks from Lack of Protection/Trends in Current Management

Current Canadian and International programs of polar bear management—which primarily focus on harvest—raise a number of concerns for the future conservation of polar bears: 1) there is a tendency for managers to focus on maximizing hunting opportunities through harvesting subpopulations at or close to the estimated maximum sustainable yield; 2) in some cases there is allowance for the hunting of polar bears without binding quotas to user groups; 3) existing agreements appear slow to respond to

instances of overharvest; 4) in some cases there remains a lack of co-management agreements for the conservation of shared subpopulations of polar bears; and 5) effects of climate change on polar bears are not incorporated into any harvesting plans.

Routine management near what is believed to be the maximum sustainable yield (MSY) for some subpopulations presents a risk to polar bear conservation, especially in consideration of uncertainty in estimates of abundance, reproduction, and survival (Caughley 1977; Taylor et al. 2005, 2006a). For example, the Viscount Melville Sound (Section 7.4) and M'Clintock Channel (Section 7.7) subpopulations were both depleted by legal over-hunting. Recovery of these subpopulations will take many years at reduced quotas (Taylor et al. 2002, 2006a). The estimated MSY for subpopulations of polar bears in Canada is annually computed by the PBTC. Estimates of MSY are based on a meta-analysis conducted in the 1990s that assumes the same reproduction and survival for polar bears across their range in Canada. This formula is $MSY = N \times 0.015 / Pr[F]$, where N = total population number, 0.015 is a constant derived from a meta-analysis to estimate survival and recruitment rates for average Canadian polar bears, and $Pr[F]$ = proportion of the harvest that is female (assumed to be 0.333, i.e., 2M:1F sex-selective harvest). Unfortunately, such deterministic estimates of MSY do not adequately reflect true risks of harvests to populations. For example, the current estimated maximum sustainable harvest for polar bears in Norwegian Bay is 9 bears/year (PBTC 2007). However, harvested-PVA that takes into account sampling error in initial subpopulation size, variance about vital rates due to sample size and annual environmental variation (survival, reproduction, sex ratio), and demographic stochasticity, suggests that even a quota of 4 bears/year may be unsustainable (Table 6).

Harvesting without quotas in subpopulations within or shared by Canada constitutes a threat to the conservation of polar bears. For example, the U.S. *Marine Mammal Protection Act* does not allow government restrictions on the annual number of polar bears killed by Alaskan aboriginal hunters (Inupiat) for the Southern Beaufort Sea until the subpopulation, which is shared with Canada, has been depleted. In Canada, the harvest of polar bears by Inuit in Québec is not limited by any quota or season restriction. Although lack of regulated quotas does not automatically mean that polar bears will be over-harvested, given the high demand for hunting opportunities the risk to subpopulations of polar bears from over-hunting where quotas do not uniformly limit harvest is readily apparent. Recent over-harvests in Kane Basin and Baffin Bay are testament to the dangers of hunting polar bears without all jurisdictions having quotas in a shared, co-management structure (Sections 7.12 and 7.13).

In the Northwest Territories, Nunavut, and Newfoundland and Labrador polar bears are managed under aboriginal land claim management systems. These systems identify a detailed management process that includes consultations with affected hunters and their organizations and formal decisions from land claim Wildlife Boards followed by memoranda of understanding between all parties. The consultation process can be lengthy and delay any management response. One clear example of this is the lack of progress on a management response (i.e., moratorium on hunting) in Western Hudson Bay in light of scientific evidence of unsustainable hunting (in combination with effects of climate change), for which preliminary results were presented to communities in December, 2005. For management purposes, the existing *Memorandum of Agreement for Polar Bears in Western Hudson Bay* specifies a target population number of 1,400 bears. The *Agreement* specifies that a moratorium on hunting should be put in place if

new research shows that the population is below 1,260 bears (i.e., 90% of the target population). The new and current population estimate is 935 bears (Regehr et al. 2007; Section 7.10). Despite a signed agreement with a clearly defined management response to population depletion, a moratorium on hunting bears in Western Hudson Bay is not in effect at the time of writing this report. To date, management responses to scientific claims of over-harvest in Baffin Bay and Kane Basin (Sections 7.12 and 7.13) have also been slow.

Co-management agreements between jurisdictions that share polar bears include an international agreement between the Inuvialuit and Inupiat for the Southern Beaufort Sea subpopulation (Section 7.2), and user-to-user agreements between the Inuvialuit and Kitikmeot Hunter's and Trappers Association (Regional Wildlife Organization) for the shared Northern Beaufort Sea and Viscount Melville Sound subpopulations. Inter-jurisdictional agreements are lacking for 7 subpopulations shared among user groups within Canada or internationally (i.e., Western Hudson Bay, Southern Hudson Bay, Foxe Basin, Davis Strait, Kane Basin, and Baffin Bay), and this may present a risk for polar bear conservation. For example, despite the regulated quotas in place for Baffin Bay by Nunavut and, since January, 2006, for Greenland, lack of a co-management agreement between these jurisdictions presently allows for a clearly unsustainable harvest of up to 190 bears (Table 6, Section 7.13; Taylor et al. 2005). Without a co-management agreement between Nunavut and Greenland, polar bears in Baffin Bay (and Kane Basin) are likely to continue to be over-harvested (Table 6, Sections 7.12 and 7.13).

Finally, no harvest programs currently accommodate anticipated changes in rates of survival and reproduction due to effects of climate change on the biology of polar bears, including reductions in food carrying capacity. In their recent review, Stirling and Parkinson (2006) suggest that a precautionary approach be taken to the harvesting of polar bears and that the potential effects of climate warming be incorporated into planning for management and conservation. Until research aimed at incorporating climate change into harvest models is carried out, it will be difficult to accurately predict sustainability of harvests. Sustainable hunting in the context of climate change will be essential to the near-term (<45 years) conservation of the polar bear in Canada.

11. TECHNICAL SUMMARY

Ursus maritimus

Polar bear

L'ours blanc

Range of Occurrence in Canada:

Extent and Area Information	
<ul style="list-style-type: none"> Extent of occurrence (EO)(km²) See Sections 3.1 and 3.2 	9.1 × 10 ⁶ km ²
<ul style="list-style-type: none"> Specify trend in EO 	Stable
<ul style="list-style-type: none"> Are there extreme fluctuations in EO? 	No
<ul style="list-style-type: none"> Area of occupancy (AO) (km²) See Sections 3.1 and 3.2 	5.6 × 10 ⁶ km ²
<ul style="list-style-type: none"> Specify trend in AO 	Stable
<ul style="list-style-type: none"> Are there extreme fluctuations in AO? 	No
<ul style="list-style-type: none"> Number of known or inferred current locations 	One
<ul style="list-style-type: none"> Specify trend in # 	Stable
<ul style="list-style-type: none"> Are there extreme fluctuations in number of locations? 	No
<ul style="list-style-type: none"> Specify trend in area, extent or quality of habitat 	Decline in quality where climate change is affecting timing of ice break-up in summer (data suggesting a link with survival and reproduction only for Western Hudson Bay).

Population Information	
<ul style="list-style-type: none"> Generation time (average age of parents in the population) 	15 years
<ul style="list-style-type: none"> Number of mature individuals 	Total population 15,500; mature individuals >10,000
<ul style="list-style-type: none"> Total population trend: 	Decline
<ul style="list-style-type: none"> % decline over the last/next 10 years or 3 generations. 	Likely less than 30%
<ul style="list-style-type: none"> Are there extreme fluctuations in number of mature individuals? 	No
<ul style="list-style-type: none"> Is the total population severely fragmented? 	No
<ul style="list-style-type: none"> Specify trend in number of populations 	n/a
<ul style="list-style-type: none"> Are there extreme fluctuations in number of populations? 	n/a
<ul style="list-style-type: none"> List populations with number of mature individuals in each: 	n/a
Threats (actual or imminent threats to populations or habitats)	
Climate warming, over-harvest, pollution, increased offshore oil and gas development	

Rescue Effect (immigration from an outside source)	
<ul style="list-style-type: none"> Status of outside population(s)? USA: Alaska, South Beaufort Sea (likely decline) Greenland: West Greenland (severe decline) Arctic Basin: Nomadic bears (unknown status) 	
<ul style="list-style-type: none"> Is immigration known or possible? 	Yes
<ul style="list-style-type: none"> Would immigrants be adapted to survive in Canada? 	Yes

• <i>Is there sufficient habitat for immigrants in Canada?</i>	Yes
• <i>Is rescue from outside populations likely?</i>	No

Quantitative Analysis	See Section 7, Table 6
------------------------------	------------------------

Current Status	COSEWIC: SPECIAL CONCERN IUCN: VULNERABLE CITES: Appendix II
-----------------------	--

Author of Technical Summary: P.D. McLoughlin, M. Taylor, M. Dowsley
July 18, 2007

Recommended Status and Reasons for Designation

[This table is to be completed in the Interim Report by the SSC;
COSEWIC will approve or modify the text in this section for the Final Report]

Recommended Status:	Alpha-numeric code:
Reasons for Designation:	
<p><u>Applicability of Criteria</u></p> <p>Criterion A (Declining Total Population):</p> <p>Criterion B (Small Distribution, and Decline or Fluctuation):</p> <p>Criterion C (Small Total Population Size and Decline):</p> <p>Criterion D (Very Small Population or Restricted Distribution):</p> <p>Criterion E (Quantitative Analysis):</p>	

12. ACKNOWLEDGEMENTS

This report benefited from the many comments received during the peer review organized by M. Festa-Bianchet as the Species Subcommittee Chair (Terrestrial Mammals) and Gloria Goulet (Coordinator, Aboriginal Traditional Knowledge, COSEWIC Secretariat). We thank all of those that contributed their views to the content and structure of this report. We thank N. Lunn as chair of the Federal/Provincial/Territorial Polar Bear Technical Committee (PBTC) for assisting with inquiries directed at the PBTC membership. The organization and materials presented in Section 7 and Tables 3–6 of this report are based on work conducted by the authors in collaboration with members of the IUCN/SSC Polar Bear Specialist Working Group and the PBTC. We especially thank the many individuals who provided us with personal commentaries on the ecology and ATK of polar bears. F. Messier graciously provided us with the cover photograph for this report.

13. INFORMATION SOURCES

- ACIA. 2004. Impacts of a warming Arctic: Arctic Climate Impact Assessment. Cambridge University Press, Cambridge.
- Amstrup, S.C. 1995. Movements, distribution, and population dynamics of polar bears in the Beaufort Sea. Ph.D. Dissertation, University of Alaska Fairbanks, Fairbanks.
- Amstrup, S.C. 2003. Polar bear. Pp. 587–610 in Wild mammals of North America: biology, management, and conservation. 2nd Edition. G.A. Feldhamer, B.C. Thompson, and J.A. Chapman (eds). John Hopkins University Press, Baltimore, MD.
- Amstrup, S.C., I. Stirling, and Lentfer, J. 1986. Size and trends of Alaskan polar bear populations. Wildl. Soc. Bull. 14:251-254.
- Amstrup, S.C., and D.P. DeMaster. 1988. Polar bear—*Ursus maritimus*. Pp. 39-56 in J. W. Lentfer (ed.). Selected marine mammals of Alaska: Species accounts with research and management recommendations. Marine Mammal Commission, Washington, DC.
- Amstrup, S.C., C. Gardner, K.C. Myers, and F.W. Oehme. 1989. Ethylene glycol (antifreeze) poisoning in a free-ranging polar bear. Veterinary and Human Toxicology 31:317-319.
- Amstrup, S.C. and C.L. Gardner. 1994. Polar bear maternity denning in the Beaufort Sea. J. Wildl. Manage. 58:1-10.
- Amstrup, S. C., G. Durner, I. Stirling, N. J. Lunn, and F. Messier. 2000. Movements and distribution of polar bears in the Beaufort Sea. Can. J. Zool. 78:948-966.
- Amstrup, S.C., T.L. McDonald, and G.M. Durner. 2004. Using satellite radiotelemetry data to delineate and manage wildlife populations. Wildl. Soc. Bull. 32:661-679.
- Amstrup, S.C, I. Stirling, T.S. Smith, C. Perham, and G.W. Thiemann. 2006. Recent observations of intraspecific predation and cannibalism among polar bears in the southern Beaufort Sea. Polar Biology published online DOI 10.1007/s00300-006-0142-5.
- Atatahak, G., and V. Banci (eds.). 2001. Traditional Knowledge Polar Bear Report. Prepared for the Department of Sustainable Development, Kugluktuk, NU. 15 pp.
- Arragutainaq, L. 2006. Personal communication (August, 2006). Sanikiluaq, NU.
- Atkinson, S.N., and M.A. Ramsay. 1995. The effects of prolonged fasting on the body composition and reproductive success of female polar bears. Funct. Ecol. 9:559-567.

- Barber, D.G., T.N. Papakyriakou, E.F. Ledrew, and M.E. Shokr. 1995. An examination of the relation between the spring period evolution of the scattering coefficient (σ°) and radiative fluxes over landfast sea-ice. *Int. J. Remote Sens.* 16:3343-3363.
- Barber, D.G., and J. Iacozza. 2004. Historical analysis of sea ice conditions in M'Clintock Channel and Gulf of Boothia, Nunavut: Implications for ringed Seal and polar bear habitat. *Arctic* 57:1-14.
- Bernhoft, A., Wiig, Ø., Skaare, J.U. 1996 Organochlorines in polar bears (*Ursus maritimus*) in Svalbard. *Environ. Pollut.* 95:159-175.
- Bernhoft, A., J.U. Skaare, Ø. Wiig, A.E. Derocher, and H.J.S. Larsen. 2000. Possible immunotoxic effects of organochlorines in polar bears (*Ursus maritimus*) at Svalbard. *J. Tox. Envir. Health A*, 59:561-574.
- Bethke, R., M.K. Taylor, S. Amstrup, and F. Messier. 1996. Population delineation of polar bears using satellite collar data. *Ecol. Appl.* 6:311-317.
- Born, E.W. 2002. Research on polar bears in Greenland, 1997–2001. Pp. 71 in N. Lunn, S. Schliebe, E.W. Born (eds). *Polar Bear Specialist Group, 23–28 June 2001, Nuuk, Greenland. Occasional Paper of the IUCN Species Survival Commission No. 26.* IUCN, Gland, Switzerland and Cambridge, UK.
- Born, E.W. 2005. The catch of polar bears in Greenland, 1993–2004. Report to the Canadian Polar Bear Technical Committee's meeting, Edmonton, Canada. Greenland Institute of Natural Resources, Nuuk, Greenland. 10 pp.
- Born, E.W., A.D. Renzoni, and R. Dietz. 1991. Total mercury in hair of polar bears (*Ursus maritimus*) from Greenland and Svalbard. *Polar Res.* 9:113-120.
- Born, E.W., Ø Wiig, and J. Thomassen. 1997. Seasonal and annual movements of radio-collared polar bears (*Ursus maritimus*) in northeast Greenland. *Journal of Marine Systems* 10:67-77.
- Born, E.W., and C. Sonne. 2005. Research on polar bears in Greenland 2001 to 2005. Report to the 14th Meeting of the IUCN Polar Bear Specialist Group. Greenland Institute of Natural Resources, Nuuk, Greenland. 14 pp.
- Brazil, J., and J. Goudie. 2006. A 5-year management plan (2006–2011) for the polar bear/nanuk (*Ursus maritimus*) in Newfoundland and Labrador. Wildlife Division, Department of Environment and Conservation. Government of Newfoundland and Labrador and the Department of Lands and Natural Resources, Nunatsiavut Government. 25 pp.
- Brice-Bennett, C. 1976. Inuit land use in the east-central Canadian arctic. Pp 63-81 in *Inuit land use and occupancy project, Vol. 1.* M. Freeman (ed). Department of Indian and Northern Affairs, Ottawa, ON.
- Brice-Bennett, C. 1977. Land Use in the Nain and Hopedale Regions. Pp 97-203 in *Our footprints are everywhere, Inuit land use and occupancy in Labrador.* C. Brice-Bennett (ed.). Labrador Inuit Association, Nain, Greenland.
- Brody, H. 1976. Inuit land use in North Baffin Island and Northern Foxe Basin. Pp 153-171 in *Inuit land use and occupancy project, Vol. 1.* M. Freeman (ed). Department of Indian and Northern Affairs, Ottawa, ON.
- Brook, R.K., and E.S. Richardson. 2002. Observations of polar bear predatory behaviour toward caribou. *Arctic* 55:193-196.
- Brower, C.D., A. Carpenter, M.L. Branigan, W. Calvert, T. Evans, A.S. Fischbach, J.A. Nagy, S. Schliebe, and I. Stirling. 2002. The Polar Bear Management Agreement for the Southern Beaufort Sea: An evaluation of the first ten years of a unique conservation agreement. *Arctic* 55:362–372.

- Calvert, W., and I. Stirling. 1990. Interactions between polar bears and overwintering walrus in the central Canadian High Arctic. *Int. Conf. Bear Res. Manage.* 8:351-356.
- Carpenter, M. 2006. Personal communication (August, 2006). Chief of Attawapiskat First Nation, Attawapiskat, ON.
- Caughley, G. 1977. *Analysis of vertebrate populations*. John Wiley & Sons, New York, NY.
- Christensen, J.H., B. Hewitson, A. Busuioc, A. Chen, X. Gao, I. Held, R. Jones, R.K. Kolli, W.-T. Kwon, R. Laprise, V. Magaña Rueda, L. Mearns, C.G. Menéndez, J. Räisänen, A. Rinke, A. Sarr, and P. Whetton. 2007: Regional Climate Projections. In: *Climate Change 2007: The Physical Science Basis. Contribution of Working Group I to the Fourth Assessment Report of the Intergovernmental Panel on Climate Change* [Solomon, S., D. Qin, M. Manning, Z. Chen, M. Marquis, K.B. Averyt, M. Tignor and H.L. Miller (eds.)]. Cambridge University Press, Cambridge, United Kingdom and New York, NY, USA.
- Clark, D.A., I. Stirling, and W. Calvert. 1997. Distribution, characteristics, and use of earth dens and related excavations by polar bears on the western Hudson Bay Lowlands. *Arctic* 50:158-166.
- Clark, J.D. and R. Eastridge. 2006. Growth and sustainability of black bears at White River National Wildlife Refuge, Arkansas. *J. Wildl. Manage.* 70:1094-1101.
- Comiso, J.C., and C.L. Parkinson. 2004. Satellite-observed changes in the Arctic. *Phys. Today* 57:38-44.
- Crompton, A. 2004. A genetic assignment of the population structure of polar bears (*Ursus maritimus*) in the greater Hudson Bay ecosystem. M.Sc. thesis, Trent University, Peterborough, Ontario.
- Cronin, M.A., S.C. Amstrup, G.W. Garner, and E.R. Vyse. 1991. Interspecific and intraspecific mitochondrial DNA variation in North American bears (*Ursus*). *Can. J. Zool.* 69:2985-2992.
- DeMaster, D.P., M.C.S. Kingsley, and I. Stirling. 1980. A multiple mark and recapture estimate applied to polar bears. *Can. J. Zool.* 58:644-658.
- DeMaster, D.P., and I. Stirling. 1981. *Ursus maritimus*. Polar bear. *Mamm. Spec.* 145: 1-7.
- Derocher, A.E. 2005. Population ecology of polar bears at Svalbard, Norway. *Pop. Ecol.* 47:267-275.
- Derocher, A.E., and I. Stirling. 1990. Distribution of polar bears (*Ursus maritimus*) during the ice-free period in western Hudson Bay. *Can. J. Zool.* 68:1395-1403.
- Derocher, A.E. and I. Stirling. 1991. Oil contamination of two polar bears. *Polar Rec.* 27:56-57.
- Derocher, A.E., and I. Stirling. 1992. The population dynamics of polar bears in western Hudson Bay. Pp. 1150-1159 in D.R. McCullough and R.H. Barrett (eds.). *Wildlife 2001: Populations*. Elsevier, Amsterdam.
- Derocher, A.E., I. Stirling, and D. Andriashek. 1992. Pregnancy rates and serum progesterone levels of polar bears in western Hudson Bay. *Can. J. Zool.* 70:561-566.
- Derocher, A.E., D. Andriashek, and I. Stirling. 1993. Terrestrial foraging by polar bears during the icefree period in western Hudson Bay. *Arctic* 46:251-254.
- Derocher, A.E., and M. Taylor. 1994. Density-dependent population regulation of polar bears. Pp. 25-30 in *Density-dependent population regulation of black, brown, and polar bears* Taylor, M. (ed.). *Int. Conf. Bear Res. Manage. Mon. Ser. No. 3*.
- Derocher, A.E. and I. Stirling. 1995a. Temporal variation in reproduction and body mass of polar bears in western Hudson Bay. *Can. J. Zool.* 73:1657-1665.

- Derocher, A.E. and I. Stirling. 1995b. Mark-recapture estimation of population size and survival rates for polar bears in western Hudson Bay. *J. Wildl. Manage.* 59:215-221.
- Derocher, A.E., I. Stirling, and W. Calvert. 1997. Male-biased harvesting of polar bears in western Hudson Bay. *J. Wildl. Manage.* 61:1075-1082.
- Derocher, A. E. and I. Stirling. 1998. Maternal investment and factors affecting offspring size in polar bears (*Ursus maritimus*). *J. Zool., London* 245:253-260.
- Derocher, A.E., and Ø. Wiig. 1999. Infanticide and cannibalism of juvenile polar bears (*Ursus maritimus*) in Svalbard. *Arctic* 52:307-310.
- Derocher, A.E., Ø. Wiig, and G. Bangjord. 2000. Predation of Svalbard reindeer by polar bears. *Polar Biology* 23:675-678.
- Derocher, A.E., Ø. Wiig, and M. Andersen. 2002. Diet composition of polar bears in Svalbard and the western Barents Sea. *Polar Biol.* 25:448-452.
- Derocher A.E., N.J. Lunn, and I. Stirling. 2004. Polar bears in a warming climate. *Integr. and Comp. Biol.* 44:163-176.
- Dobey, S., D.B. Masters, B.K. Scheick, J.D. Clark, M.R. Pelton and M.E. Sunquist. 2005. Ecology of Florida black bears in the Okefenokee-Osceola ecosystem. *Wildl. Monogr.* 158.
- Dowsley, M. 2005. Inuit knowledge regarding climate change and the Baffin Bay polar bear population. Government of Nunavut, Department of Environment, Final Wildlife Report 1, Iqaluit, Nunavut. 43 pp.
- Dowsley, M and Taylor, MK. 2006a. Community consultations with Qikiqtarjuaq, Clyde River and Pond Inlet on management concerns for the Baffin Bay (BB) polar bear population: a summary of Inuit knowledge and community consultations. Government of Nunavut, Department of Environment, Final Wildlife Report 2, Iqaluit, NU. 83 pp.
- Dowsley, M., and M.K. Taylor. 2006b. Management consultations for the Western Hudson Bay (WH) polar bear population (01-02 December, 2005). Government of Nunavut, Department of Environment, Final Wildlife Report 3, Iqaluit, NU. 55 pp.
- Drummond, K.J. 2006. Canada's discovered oil and gas reserves north of 60. Drummond Consulting, Calgary, AB. 7 pp.
- Durner, G.M., and S.C. Amstrup. 1995. Movements of a polar bear from northern Alaska to northern Greenland. *Arctic* 48:338-341.
- Durner, G.M., S.C. Amstrup, and T.L. McDonald. 2001. Estimating the impacts of oil spills on polar bears. *Arc. Res. U. S.* 14:33-37.
- Dyck, M.C., and K.J. Daley. 2002. Cannibalism of a yearling polar bear (*Ursus maritimus*) at Churchill, Canada. *Arctic* 55:190-193.
- Farquharson, D.R. 1976. Inuit land use in the west-central Canadian arctic. Pp 33-61 in *Inuit land use and occupancy project, Vol. 1.* M. Freeman (ed.). Department of Indian and Northern Affairs, Ottawa, ON.
- Fay, F.H. 1982. Ecology and biology of the Pacific Walrus, *Odobenus rosmarus divergens* Illiger. United States Department of the Interior, Fish and Wildlife Service, North American Fauna, Number 74. Washington, D.C. 279 pp.
- Ferguson, S.H, Taylor, M.K., and Messier, F. 1997. Space use of polar bears in and around Auyuittuq National Park, Northwest Territories, during the ice-free period. *Can. J. Zool.* 75:1585-1594.
- Ferguson, S.H., M.K. Taylor, E.W. Born, and F. Messier. 1998. Fractals, seaice landscape and spatial patterns of polar bears. *J. Biogeog.* 25:108-192.
- Ferguson, S.H., M.K. Taylor, A. Rosing-Asvid, E.W. Born, and F. Messier. 1999. Determinants of home range size in polar bears. *Ecol. Lett.* 2:311-318.

- Ferguson, S.H., and P.D. McLoughlin. 2000. Effect of energy availability, seasonality, and geographic range on brown bear life history. *Ecography* 23:193-200.
- Ferguson, S.H., M.K. Taylor, and F. Messier. 2000a. Influence of sea ice dynamics on habitat selection by polar bears. *Ecology* 81:761-772.
- Ferguson, S.H., M.K. Taylor, A. Rosing-Asvid, E.W. Born, and F. Messier. 2000b. Relationships between denning of polar bears and conditions of sea ice. *J. Mamm.* 81:1118-1127.
- Ferguson, S.H., M.K. Taylor, E.W. Born, A. Rosing-Asvid, and F. Messier. 2001. Activity and movement patterns of polar bears inhabiting consolidated versus active pack ice. *Arctic* 54:49-54.
- Ferguson, S.H., I. Stirling, and P.D. McLoughlin. 2005. Climate change and ringed seal (*Phoca hispida*) recruitment in western Hudson Bay. *Mar. Mamm. Sci.* 21:121-135.
- Furnell, D.J. and D. Oolooyuk. 1980. Polar bear predation on ringed seals in ice-free water. *Can. Field-Nat.* 94:88-89.
- Furnell, D.J., and R. E. Schweinsburg. 1984. Population dynamics of central Arctic polar bears. *J. Wildl. Manage.* 48:722-728.
- Gagnon, A.S., and W.A. Gough. 2005. Climate change scenarios for the Hudson Bay region: An intermodel comparison. *Climatic Change* 69:269-297.
- Gau, R.J. 2006. Personal communication (May, 2006). Department of Resources, Wildlife, and Economic Development, Government of the Northwest Territories, Yellowknife, NT.
- Gentry, A. 2001. Nomenclatural notes: the authorship and date of the specific name of *Ursus* or *Thalarctos maritimus*, the polar bear, is Phipps (1774) and not Linnaeus (1758). *Bull. Zool. Nomen.* 58, Part 4.
- Goodyear, M.A. 2003. Extralimital sighting of a polar bear, *Ursus maritimus*, in northeast Saskatchewan. *Can. Field-Nat.* 117: 648.
- Hanski, I.A., and M.E. Gilpin (eds.). 1997. *Metapopulation biology: Ecology, genetics, and evolution.* Academic Press. San Diego, CA.
- Harington, C.R. 1968. Denning habits of the polar bear (*Ursus maritimus* Phipps). *Can. Wildl. Serv. Report Series No. 5.* 30 pp.
- Heaton, T.H., and F. Grady. 1993. Fossil grizzly bears (*Ursus arctos*) from Prince of Wales Island, Alaska, offer new insights into animal dispersal, interspecific competition, and age of deglaciation. *Curr. Res. Pleist.* 10:98-100.
- Henriksen, E.O., Ø. Wiig, J.U. Skaare, G.W. Gabrielsen, and A.E. Derocher. 2001. Monitoring PCBs in polar bears: lessons learned from Svalbard. *J. Env. Monit.* 3:493-498.
- Howe, E.J., M.E. Obbard, and J.A. Schaefer. 2007. Extirpation risk of an isolated carnivore population under different management scenarios. *J. Wildl. Manage.* (in press).
- IUCN 2006. 2006 IUCN Red List of Threatened Species. IUCN, Gland, Switzerland and Cambridge, U.K. <<http://www.iucnredlist.org>>. Downloaded on 4 May 2006.
- IUCN/SSC Polar Bear Specialist Group. 2006. Polar bears: Proceedings of the 14th Working Meeting of the IUCN Polar Bear Specialist Group. Aars, J., A. Derocher, and N. J. Lunn (eds.), IUCN, Gland, Switzerland and Cambridge, U.K.
- Jonkel, C., P. Smith, I. Stirling, and G.B. Kolenosky. 1976. The present status of the polar bear in the James Bay and Belcher Islands area *Occ. Pap. No. 26.* Canadian Wildlife Service, Ottawa, ON.
- Kalxdorff, S.B. 1997. Collection of local knowledge regarding polar bear habitat use in Alaska. *Marine Mammals Management, Fish and Wildlife Service, Region 7,*

- Alaska. USFWS Technical Report MMM 97-2. U.S. Department of the Interior. 71 pp.
- Kapashesit, P. 2006. Personal communication (August, 2006). Ontario Ministry of Natural Resources, Moosonee, Ontario.
- Keith, D., J. Arqvig, L. Kamookak, J. Ameralik and the Gjoa Haven Hunters' and Trappers' Organization. 2005. Inuit Qaujimaningit Nanurnut, Inuit Knowledge of Polar Bears. Gjoa Haven Hunters' and Trappers' Organization and CCI Press, Edmonton, Alberta.
- Kemp, W.B. 1976. Inuit land use in south and east Baffin Island. Pp 125-151 *in* Inuit land use and occupancy project, Vol. 1. M. Freeman (ed.). Department of Indian and Northern Affairs, Ottawa, ON.
- Kiliaan, H.P.L., I. Stirling, and C. Jonkel. 1978. Notes on polar bears in the area of Jones Sound and Norwegian Bay. *Can. Wild. Serv. Prog. Note* 88, 21 pp.
- Kingsley, M.C.S., I. Stirling and W. Calvert. 1985. The distribution and abundance of seals in the Canadian High Arctic, 1980–82. *Can. J. Fish. Aquat. Sci.* 42:1189-1210.
- Kolenosky, G.B., and J.P. Prevett. 1983. Productivity and maternity denning of polar bears in Ontario. *Int. Conf. Bear Res. Manage.* 5:238-245.
- Kolenosky, G.B., Abraham, K.F., and Greenwood, C.J. 1992. Polar bears of southern Hudson Bay. Polar Bear Project, 1984–88, Final Report, Ontario Ministry of Natural Resources, Maple, Ontario.
- Kotierk, M. 2005. Personal communication (July, 2005). Department of the Environment, Government of Nunavut, Igloolik, NU.
- Kowalska, Z. 1962. Intergeneric crossbreed of the brown bear *Ursus arctos* L., and the polar bear *Thalarctos maritimus* (Phipps). *Przeglad Zoologiczny*, 6:230, 1 pl. [Polish with English summary.]
- Kowalska, Z. 1965. Cross breeding between a female European brown bear and a male polar bear in Lodz Zoo. *Przeglad Zoologiczny*, 9:313-319. [Polish with English summary.]
- Kowalska, Z. 1969. A note on bear hybrids *Thalarctos maritimus* and *Ursus arctos* at Lodz zoo. *Int. Zoo. Year.* 9:89.
- Kucklick, J.R., W.D.J. Struntz, P.R. Becker, G.W. York, T.M. O'Hara, and J.E. Bohonowych. 2002. Persistent organochlorine pollutants in ringed seals and polar bears collected from northern Alaska. *Sci. Tot. Envi.* 287:45-59.
- Kurtén, B. 1964. The evolution of the polar bear, *Ursus maritimus* Phipps. *Acta Zool. Fenn.* 108:130.
- Lamb, H.H. 1977. *Climate: Present, past and future*, Vol. 2. Climatic history and future. Methuen, London.
- Larsen, T., C. Jonkel, and C. Vibe. 1983. Satellite radio-tracking of polar bears between Svalbard and Greenland. *Int. Conf. Bear Res. Manage.* 5:230-237.
- Lemke, P., J. Ren, R.B. Alley, I. Allison, J. Carrasco, G. Flato, Y. Fujii, G. Kaser, P. Mote, R.H. Thomas, and T. Zhang. 2007: Observations: Changes in Snow, Ice and Frozen Ground. In: *Climate Change 2007: The Physical Science Basis. Contribution of Working Group I to the Fourth Assessment Report of the Intergovernmental Panel on Climate Change* [Solomon, S., D. Qin, M. Manning, Z. Chen, M. Marquis, K.B. Averyt, M. Tignor and H.L. Miller (eds.)]. Cambridge University Press, Cambridge, United Kingdom and New York, NY, USA.
- Lentfer, J.W., R.J. Hensel, J.R. Gilbert, and F.E. Sorensen. 1980. Population characteristics of Alaskan polar bears. *Int. Conf. Bear Res. Manage.* 4:109-116.
- Letcher, R.J., R.J. Norstrom, and Å. Bergman. 1995. Geographical distribution and identification of methyl sulphone PCB and DDE metabolites in pooled polar bear

- (*Ursus maritimus*) adipose tissue from western hemisphere Arctic and Subarctic regions. *Sci. Total Envir.* 160/161:409-420.
- Lewis, A., W. Doidge and S. Suppa. 2006. Update of traditional knowledge on polar bears at Inukjuak and Puvirnutuq, Nunavik. Report 12-493 submitted to Aboriginal Species at Risk Fund, Environment Canada, Québec Region. Nunavik Research Centre, Makivik Corporation, Kuujuaq, QC.
- Lie E., H.J.S. Larsen, S. Larsen, G.M. Johansen, A.E. Derocher, N.J. Lunn, et al. 2004. Does high organochlorine (OC) exposure impair the resistance to infection in polar bears (*Ursus maritimus*)? Part I: Effect of OCs on the humoral immunity. *J. Toxicol. Environ. Health A* 67:555–582.
- Lie E., H.J.S. Larsen, S. Larsen, G.M. Johansen, A.E. Derocher, N.J. Lunn, et al. 2005. Does high organochlorine (OC) exposure impair the resistance to infection in polar bears (*Ursus maritimus*)? Part II: Possible effects of OCs on mitogen and antigen-induced lymphocyte proliferation. *J. Toxicol. Environ. Health A* 68:457–484.
- Linnaeus, C. 1758. *Systema Naturae*, Ed. 10, Vol. 1. 824 pp. Salvii, Holmiae.
- Lowry, L.F., J.J. Burns, and R.R. Nelson. 1987. Polar bear, *Ursus maritimus*, predation on belugas, *Delphinapterus leucas*, in the Bering and Chukchi Seas. *Can. Field-Nat.* 101:141-146.
- Lunn, N.J., I. Stirling, and D. Andriashek. 1995. Movements and distribution of polar bears in the northeastern Beaufort Sea and McClure Strait. Final Report by Canadian Wildlife Service to the Inuvialuit Wildlife Management Advisory Committee. Inuvik, NWT. 65 pp.
- Lunn, N.J., I. Stirling, D. Andriashek, and G.B. Kolenosky. 1997. Re-estimating the size of the polar bear population in western Hudson Bay. *Arctic* 50:234-40.
- Lunn, N.J., Stirling, I., Andriashek, D., and Richardson, E. 2004. Selection of maternity dens by female polar bears in western Hudson Bay. *Polar Biol.* 27:350–356.
- Lunn, N.J., I. Stirling, E. Richardson, D. Andriashek, W. Calvert, G. Thiemann, and C. Davis. 2006. Canadian Wildlife Service report. Report to the Canadian Polar Bear Technical Committee, St. Johns, Newfoundland, Canada. Canadian Wildlife Service, Edmonton, AB. 17 pp.
- Martin, P.L. 1876. *Ursus arctos* and *Ursus maritimus*. On bastards between these species born in Nill's menagerie at Stuttgart. *Zoologische Garten* 1876:20-22. [Zoologische Garten, 1877:135-136. W. Stendell and E. von Martens, tom. cit., pp.401-402.]
- Martin, P.L. 1882. On a hybrid between a male *Ursus maritimus* and a female *Ursus arctos*. *Zoologische Garten*, 1882:xxiii, 370.
- Mauritzen, M., A.E. Derocher, O. Pavlova, and Ø Wiig. 2003. Female polar bears, *Ursus maritimus*, on the Barents Sea drift ice: walking the treadmill. *Anim. Behav.* 66:107-113.
- McDonald, M, L. Arragutainaq and Z. Novalinga (eds.). 1997. Voices from the Bay: Traditional ecological knowledge of Inuit and Cree in the Hudson Bay Bioregion. Canadian Arctic Resources Committee and the Environmental Committee of the Municipality of Sanikiluaq, Ottawa, ON.
- McLoughlin, P.D., M.K. Taylor, and F. Messier. 2005. Conservation risks of male-selective harvest for mammals with low reproductive potential. *J. Wildl. Manage.* 69:1592-1600.
- Messier, F. 2000. Effects of capturing, tagging and radio-collaring polar bears for research and management purposes in Nunavut and the Northwest Territories. Report to the Government of Nunavut. 64 pp.

- Messier, F., M.K. Taylor, and M.A. Ramsay. 1992. Seasonal activity patterns of female polar bears in the Canadian Arctic as revealed by satellite telemetry. *J. Zool. (Lond)* 226:219-229.
- Messier, F., M.K. Taylor, and M.A. Ramsay. 1994. Denning ecology of polar bears in the Canadian Arctic Archipelago. *J. Mammal.* 75:420-430.
- Messier, F., M.K. Taylor, A. Plante, and T. Romito. 2001. Atlas of polar bear movements in Nunavut, Northwest Territories, and neighbouring areas. Nunavut Wildlife Service and University of Saskatchewan, Saskatoon, SK.
- Monnett, C. and J.S. Gleason. 2006. Observations of mortality associated with extended open-water swimming by polar bears in the Alaskan Beaufort Sea. *Polar Biol.* published online January (DOI 10.1007/s00300-005-0105-2).
- Muir, D.C.G., S. Backus, A.E. Derocher, R. Dietz, T.J. Evans, G.W. Gabrielsen, J. Nagy, R.J. Norstrom, C. Sonne, I. Stirling, M.K. Taylor, and R.J. Letcher. 2006. Brominated flame retardants in polar bears (*Ursus maritimus*) from Alaska, the Canadian Arctic, East Greenland, and Svalbard. *Envi. Sci. Tech.* 40:449-455.
- Nageak, B.P., C.D.N. Brower, and S.L. Schliebe. 1994. Polar bear management in the southern Beaufort Sea: An agreement between the Inuvialuit Game Council and North Slope Burrough Fish and Game Committee. *Trans. N. Amer. Wildl. Natur. Resour. Conf.* 59:337-343.
- Norstrom, R.J., M. Simon, and D.C.G. Muir. 1988. Organochlorine contaminants in arctic marine food chains: identification, geographical and temporal trends in polar bears. *Environ. Sci. Technol.* 22:1063-1071.
- Norstrom, R.J. and D.C.G. Muir. 1994. Chlorinated hydrocarbon contaminants in arctic marine mammals. *Sci. Tot. Environ.* 154:107-128.
- Norstrom, R.J., S.E. Belikov, E.W. Born, G.W. Garner, B. Malone, S. Olpinski, M.A. Ramsay, S. Schliebe, I. Stirling, M.S. Stishov, M. K. Taylor, and Ø. Wiig. 1998. Chlorinated hydrocarbon contaminants in polar bears from eastern Russia, North America, Greenland, and Svalbard: Biomonitoring of Arctic pollution. *Arch. Env. Cont. Tox.* 35:354-367.
- Nunatsiavut Government. 2006. Polar bear Interviews with Elders from Nain. Collected by J. Goudie. Unpubl. doc.
- NTI (Nunavut Tunngavik Inc.). 2005. What if the winter doesn't come? Inuit perspectives on climate change adaptation challenges in Nunavut. Summary Workshop Report, March 15-17, 2005. Iqaluit, NU.
- Obbard, M.E., and L.R. Walton. 2004. The importance of Polar Bear Provincial Park to the Southern Hudson Bay polar bear population in the context of future climate change. *In Parks and protected areas research in Ontario, 2004: planning northern parks and protected areas: proceedings of the Parks Research Forum of Ontario annual general meeting, Edited by C.K. Rehbein, J.G. Nelson, T.J. Beechey, and R.J. Payne.* Parks Research Forum of Ontario, Waterloo, ON.
- Obbard, M.E., M.R.L. Cattet, T. Moody, L.R. Walton, D. Potter, J. Inglis, and C. Chenier. 2006. Temporal trends in the body condition of Southern Hudson Bay polar bears. *Climate Change Research Information Note, No. 3.* Applied Research and Development Branch, Ontario Ministry of Natural Resources, Sault Ste. Marie, ON.
- Oskam, I.C., E. Ropstad, E. Lie, A.E. Derocher, Ø Wiig, E. Dahl, et al. 2004. Organochlorines affect the steroid hormone cortisol in free-ranging polar bears (*Ursus maritimus*) at Svalbard, Norway. *J Toxicol Environ Health A* 67:959-977.
- Øritsland, N.A., F.R. Engelhardt, F.A. Juck, R.J. Hurst, and P.D. Watts. 1981. Effect of crude oil on polar bears. *Environmental Studies No. 24.* Northern Affairs

- Program, Northern Environmental Protection Branch, Indian and Northern Affairs, Ottawa, ON.
- Paetkau, D., W. Calvert, I. Stirling, and C. Strobeck. 1995. Microsatellite analysis of population structure in Canadian polar bears. *Mol. Ecol.* 4:347-354.
- Paetkau, D., S.C. Amstrup, E.W. Born, W. Calvert, A.E. Derocher, G.W. Garner, F. Messier, I. Stirling, M.K. Taylor, O. Wiig, and C. Strobeck. 1999. Genetic structure of the world's polar bear populations. *Mol. Ecol.* 8:1571-1584.
- Palmer, S.S., R.A. Nelson, M.A. Ramsey, I. Stirling, and J.M. Bahr. 1988. Annual changes in serum sex steroids in male and female black (*Ursus americanus*) and polar (*Ursus maritimus*) bears. *Biol. Repr.* 38:1044-1050.
- Parkinson, C.L., and D.J. Cavalieri. 2002. A 21 year record of Arctic sea-ice extents and their regional, seasonal, and monthly variability and trends. *Annals of Glaciology* 34:441-446.
- Parks Canada. 2004. Paulatuuq Oral History Project: Inuvialuit Elders Share Their Stories. Parks Canada, Western Arctic Field Unit, Inuvik, NT.
- Pasitschniak-Arts, M., and F. Messier. 1999. Brown (grizzly) and polar bears. Pp. 409-428 in *Ecology and management of large mammals in North America*. P. Krausman and S. Demarais (eds.). Prentice-Hall, NY.
- PBTC. 2006. Minutes of the 2006 Polar Bear Technical Committee Meeting, St. John's, Newfoundland and Labrador, February 2006. Canadian Wildlife Service, Edmonton, AB. 25 pp.
- PBTC. 2007. Minutes of the 2007 Polar Bear Technical Committee Meeting, Edmonton, Alberta, February 2007. Canadian Wildlife Service, Edmonton, AB. 31 pp.
- Peacock, E., M.K. Taylor, and M.G. Dyck. 2006. Davis Strait Population Survey Interim Report - 2006. Department of Environment, Government of Nunavut, Igloolik, NU. 14 pp.
- Perham, C.J. 2005. Proceedings of the Beaufort Sea Polar Bear Monitoring Workshop. OCS Study MMS 2005-034. Prepared by U.S. Fish and Wildlife Service-Marine Mammals Management, Anchorage, AK. Prepared for the U.S. Dept. of the Interior, Minerals Management Service, Alaska OCS Region, Anchorage, AK. 26 pp. plus appendices.
- Phipps, C.J. 1774. *A voyage towards the North Pole undertaken...1773*. viii, 253 pp., 14 pls. Nourse, London.
- Polischuk, S.C., R.J. Norstrom, and M.A. Ramsay. 2002. Body burdens and tissue concentrations of organochlorines in polar bears (*Ursus maritimus*) vary during seasonal fasts. *Envir. Poll.* 118:29-39.
- Prestrud, P. and I. Stirling. 1994. The international polar bear agreement and the current status of polar bear conservation. *Aqu. Mamm.* 20:1-12.
- Ramsay, M.A., and R.L. Dunbrack. 1986. Physiological constraints on life history phenomena: The example of small bear cubs at birth. *Am. Nat.* 127:735-743.
- Ramsay, M.A., and I. Stirling. 1988. Reproductive biology and ecology of female polar bears (*Ursus maritimus*). *J. Zool. (Lond.)* 214:601-634.
- Ramsay, M.A., and I. Stirling. 1990. Fidelity of female polar bears to winter den sites. *J. Mamma.* 71:233-236.
- Ramsay, M.A., and K.A. Hobson. 1991. Polar bears make little use of terrestrial food webs: Evidence from stable-carbon isotope analysis. *Oecologia* 86:598-600.
- Regehr, E.V., S.C. Amstrup, and I. Stirling. 2006. Polar bear population status in the southern Beaufort Sea: U.S. Geological Survey Open-File Report 2006-1337. 30 pp.

- Regehr, E.V., N.J. Lunn, S.C. Amstrup, and I. Stirling. 2007. Effects of Earlier Sea Ice Break-up on Survival and Population Size of Polar Bears in Western Hudson Bay. *J. Wildl. Manage.* In press.
- Richardson, E., I. Stirling, and D.S. Hik. 2005. Polar bear (*Ursus maritimus*) maternity denning habitat in western Hudson Bay: A bottom-up approach to resource selection functions *Can. J. Zool.* 83:860-870.
- Riewe, R. 1976. Inuit land use in the High Canadian Arctic. Pp. 173-184 *in* Inuit land use and occupancy project, Vol. 1. M. Freeman (ed.). Department of Indian and Northern Affairs, Ottawa, ON.
- Rosing-Asvid, A. 2002. The polarbear hunt in Greenland. Technical report No. 45. Greenland Institute of Natural Resources, Nuuk. 25 pp.
- Rosing-Asvid, A., and E.W. Born. 1990. Fangst af isbjørn (*Ursus maritimus*) i Avanersuaq og Upernavik kommuner: en interviewundersøgelse. With english summary. Teknisk rapport – Grønlands Hjemmestyre, Miljø- og Naturforvaltning. Rapport nr. 23 – December 1990:64 pp.
- Rosing-Asvid, A., E.W. Born, and M.C.S. Kingsley. 2002. Age at sexual maturity of males and timing of the mating season of polar bears (*Ursus maritimus*) in Greenland. *Polar Biol.* 25:878-883.
- Schliebe, S.L., T.J. Evans, S. Miller, C.J. Perham, and J. Wilder. 2006. Summary of polar bear management in Alaska 2004/2005. Report to the Canadian Polar Bear Technical Committee, St. Johns, Newfoundland, Canada. USFWS, Marine Mammals Management, Anchorage, AK. 19 pp.
- Schweinsburg, R.E., L.J. Lee, and P.B. Latour. 1982. Distribution, movement, and abundance of polar bears in Lancaster Sound, Northwest Territories. *Arctic* 35:159–169.
- Skaare, J.U., A. Bernhoft, Ø. Wiig, K.R. Norum, E. Haug, D.M. Eide, and A.E. Derocher. 2001. Relationships between plasma levels of organochlorines, retinol and thyroid hormones from polar bears (*Ursus maritimus*) at Svalbard. *J. Envir. Health Tox.* 62:227-241.
- Skaare J.U., H.J. Larsen, E. Lie, A. Bernhoft, A.E. Derocher, R. Norstrom, et al. 2002. Ecological risk assessment of persistent organic pollutants in the arctic. *Toxicology* 181:193-197.
- Skinner, W.R., R.L. Jeffries, T.J. Careleton, R.F. Rockwell, and K.F. Abraham. 1998. Prediction of reproductive success and failure in lesser snow geese based on early season climatic variables. *Glob. Change Biol.* 4:3-16.
- Smith, A.E., and M.R.J. Hill. 1996. Polar bear, *Ursus maritimus*, depredation of Canada Goose, *Branta canadensis*, nests. *Can. Field-Nat.* 110:339-340.
- Smith, P., I. Stirling, C. Jonkel, and I. Juniper. 1975. Notes on the present status of the polar bear (*Ursus maritimus*) in Ungava Bay and northern Labrador. *Progress Notes* No. 53. Canadian Wildlife Service. 8 pp.
- Smith, T.G. 1980. Polar bear predation of ringed and bearded seals in the land-fast sea ice habitat. *Can. J. Zool.* 58:2201-2209.
- Smith, T.G., and B.L. Sjøre. 1990. Predation of belugas and narwhals by polar bears in nearshore areas of the Canadian High Arctic. *Arctic* 43:99-103.
- Smithwick, M., S.A. Mabury, K. Solomon, C. Sonne, J.W. Martin, E. W. Born, R. Dietz, A.E. Derocher, R.J. Letcher, T.J. Evans, G. Gabrielsen, J. Nagy, I. Stirling, M. Taylor and D.C.G. Muir. 2005. Circumpolar study of Perfluoroalkyl contaminants in polar bears (*Ursus maritimus*). *Environ. Sci. Tech.* 39:5517-5523.
- Solomon, A. 2006. Personal communication (August, 2006). Chief of Fort Albany First Nation, Fort Albany, Ontario.

- Sonne, C., R. Dietz, E.W. Born, F.F. Riget, M. Kirkegaard, L. Hyldstrup, et al. 2004. Is bone mineral composition disrupted by organochlorines in East Greenland polar bears (*Ursus maritimus*)? *Environ. Health Perspect.* 112:1711–1716.
- Stirling, I. 1977. Adaptations of Weddell and ringed seals to exploit the polar fast ice habitat in the absence or presence of surface predators. Pp. 741-748 *in* Adaptations within Antarctic ecosystems. G.A. Llano (ed.). Gulf, Houston, TX.
- Stirling, I. 1988a. Polar bears. University of Michigan Press. Ann Arbor, MI.
- Stirling, I. 1988b. Attraction of polar bears *Ursus maritimus* to offshore drilling sites in the eastern Beaufort Sea. *Polar Rec.* 24:1-8.
- Stirling, I. 1990. Polar bears and oil: ecologic effects. Pp. 223-234 *in* Synthesis of effects of oil on marine mammals. J.R. Geraci and D.J. St. Aubin (eds.). Academic Press, New York, NY.
- Stirling, I. 2005. Reproductive rates of ringed seals and survival of pups in northwestern Hudson Bay, Canada, 1991–2000. *Polar Biol.* 28:381-387.
- Stirling, I., D. Andriashek, P. Latour, and W. Calvert. 1975. The distribution and abundance of polar bears in the eastern Beaufort Sea. Final Report to the Beaufort Sea Project. Fisheries and Marine Service, Department of Environment. Victoria, BC. 59 pp.
- Stirling, I. and W.R. Archibald. 1977. Aspects of predation of seals by polar bears. *J. Fish. Res. Bd. Canada* 34:1126-1129.
- Stirling, I., C. Jonkel, P. Smith, R. Robertson, and D. Cross. 1977. The ecology of the polar bear (*Ursus maritimus*) along the western coast of Hudson Bay. Occ. Pap. No. 33, Canadian Wildlife Service, Ottawa, ON.
- Stirling, I., and H.P.L. Kiliaan. 1980. Population ecology studies of the polar bear in Northern Labrador. CWS Occasional Paper No. 42, Canadian Wildlife Service. 21 pp.
- Stirling, I., W. Calvert, and D. Andriashek. 1980. Population ecology studies of the polar bear in the area of southeastern Baffin Island. Occasional Paper No. 44., Canadian Wildlife Service. 30 pp.
- Stirling, I., W. Calvert and Cleator, H. 1982. Underwater vocalizations as a tool for studying the distribution and relative abundance of wintering pinnipeds in the High Arctic. *Arctic* 36:262-274.
- Stirling, I., D. Andriashek, C. Spencer, and A.E. Derocher. 1988. Assessment of the polar bear population in the eastern Beaufort Sea. Final Report to the Northern Oil and Gas Assessment Program. Canadian Wildlife Service, Edmonton, AB. 81 pp.
- Stirling, I., and D. Andriashek. 1992. Terrestrial denning of polar bears in the eastern Beaufort Sea area. *Arctic* 45:363-366.
- Stirling, I. and A.E. Derocher. 1993. Possible impacts of climatic warming on polar bears. *Arctic* 46:240-245.
- Stirling, I., D.A. Andriashek, and W. Calvert. 1993. Habitat preferences of polar bears in the western Canadian Arctic in late winter and spring. *Polar Rec.* 29:13-24.
- Stirling, I. and N.A. Øritsland. 1995. Relationships between estimates of ringed seal and polar bear populations in the Canadian Arctic. *Can. J. Fish. Aquat. Sci.* 52:2594-2612.
- Stirling, I., and N. J. Lunn. 1997. Environmental fluctuations in Arctic marine ecosystems as reflected by variability in reproduction of polar bears and ringed seals. Pp. 167-181 *in* Ecology of arctic environments. S. J. Woodin and M. Marquiss (eds.). Blackwell, Oxford, England.

- Stirling, I., N.J. Lunn, and J. Iacozza. 1999. Long-term trends in the population ecology of polar bears in Western Hudson Bay in relation to climatic change. *Arctic* 52:294-306.
- Stirling, I., N.J. Lunn, J. Iacozza, C. Elliott and M.E. Obbard. 2004. Polar bear distribution and abundance on the Southwestern Hudson Bay Coast during open water season, in relation to population trends and annual ice patterns. *Arctic* 57:15-26.
- Stirling, I., and C.L. Parkinson. 2006. Possible effects of climate warming on selected populations of polar bears (*Ursus maritimus*) in the Canadian Arctic. *Arctic* 59:261-275.
- Talbot, S.L., and G.F. Shields. 1996a. A phylogeny of the bears (*Ursidae*) inferred from complete sequences of three mitochondrial genes. *Mol. Phyl. Evol.* 5:567-575.
- Talbot, S.L., and G.F. Shields. 1996b. Phylogeography of brown bears (*Ursus arctos*) of Alaska and paraphyly within the *Ursidae*. *Mol. Phyl. Evol.* 5:477-494.
- Taylor, M. (ed.) 1994. Density-dependent population regulation of black, brown, and polar bears. *Int. Conf. Bear Res. Manage. Mon. Ser.* 3:1–30.
- Taylor, M.K., T. Larsen, and R.E. Schweinsburg. 1985. Observations of intraspecific aggression and cannibalism in polar bears (*Ursus maritimus*). *Arctic* 38:30-39.
- Taylor, M.K., D.P. DeMaster, F.L. Bunnell, and R.E. Schweinsburg. 1987. Modelling the sustainable harvest of female polar bears. *J. Wildl. Manage.* 51:811-820.
- Taylor, M. and J. Lee. 1994. Tetracycline as a biomarker for polar bears. *Wildl. Soc. Bull.* 22:83-89.
- Taylor, M.K., and L.J. Lee. 1995. Distribution and abundance of Canadian polar bear populations: a management perspective. *Arctic* 48:147–154.
- Taylor, M.K., S. Akeeagok, D. Andriashek, W. Barbour, E.W. Born, W. Calvert, H.D. Cluff, S. Ferguson, J. Laake A. Rosing-Asvid, I. Stirling and F. Messier. 2001. Delineating Canadian and Greenland polar bear (*Ursus maritimus*) populations by cluster analysis of movements. *Can. J. Zool.* 79:690–709.
- Taylor, M.K., J. Laake, H.D. Cluff, M. Ramsay, and F. Messier. 2002. Managing the risk of harvest for the Viscount Melville Sound polar bear population. *Ursus* 13:185-202.
- Taylor, M.K., M. Obbard, B. Pond, M. Kuk, and D. Abraham. A guide to using RISKMAN: Stochastic and deterministic population modelling RISK MANAGEMENT decision tool for harvested and unharvested populations. Version 1.9. Peterborough: Ontario Ministry of Natural Resources. Also available from <http://www.nrdpfc.ca/riskman/riskman.htm>.
- Taylor, M.K., J. Laake, P.D. McLoughlin, E.W. Born, H.D. Cluff, S.H. Ferguson, A. Rosing-Asvid, R. Schweinsburg, and F. Messier. 2005. Demography and viability of a hunted population of polar bears. *Arctic* 58:203-215.
- Taylor, M.K., J.L. Laake, P.D. McLoughlin, H.D. Cluff, and F. Messier. 2006a. Demographic parameters and harvest-explicit population viability analysis for polar bears in M'Clintock Channel, Nunavut. *J. Wildl. Manage.* 70:1667–1673.
- Taylor, M.K., J.L. Laake, P.D. McLoughlin, H.D. Cluff, and F. Messier. 2006b. Demography and population viability of polar bears in Lancaster Sound and Norwegian Bay, Nunavut. Final Report. Government of Nunavut, Department of Environment, Iqaluit. 29 pp.
- Taylor, M.K., J.L. Laake, P.D. McLoughlin, H.D. Cluff, and F. Messier. 2006c. Demography and population viability of polar bears in the Gulf of Boothia. Final Report. Government of Nunavut, Department of Environment, Iqaluit. 29 pp.
- Taylor, M.K., P.D. McLoughlin, and F. Messier. 2006d. Sex-selective harvesting of polar bears. *Wildlife Biology* (In press).

- Taylor, M.K., J. Laake, P.D. McLoughlin, H.D. Cluff, E.W. Born, A. Rosing-Asvid, and F. Messier. 2007. Population parameters and harvest risks for polar bears (*Ursus maritimus*) in Kane Basin, Nunavut and Greenland. *Polar Biol.* (submitted) 29 pp.
- Thenius, E. 1953. Concerning the analysis of the teeth of polar bears. *Mammal. Bull.* 1:14-20.
- Treseder, L., and A. Carpenter. 1989. Polar bear management in the southern Beaufort Sea. *Information North* 15:24.
- Usher, P. 1976. Inuit land use in the Western Canadian Arctic. Pp. 21-31 *in* Inuit land use and occupancy project, Vol. 1. M. Freeman (ed.). Department of Indian and Northern Affairs, Ottawa, ON.
- Val, E. 1976. Inuit land use in the Port Burwell Area. Pp. 121-123 *in* Inuit land use and occupancy project, Vol. 1. M. Freeman (ed.). Department of Indian and Northern Affairs, Ottawa, ON.
- Van de Velde, F., I. Stirling, and E. Richardson. 2003. Polar bear (*Ursus maritimus*) denning in the area of the Simpson Peninsula, Nunavut. *Arctic* 56:191-197.
- Watts, P.D., and S.E. Hansen. 1987. Cyclic starvation as a reproductive strategy in the polar bear. *Symp. Zool. Soc. Lond.* 57:306-318.
- Wear, B.J., R. Eastridge, and J.D. Clark. 2005. Factors affecting settling, survival, and viability of black bears reintroduced to Felsenthal National Wildlife Refuge, Arkansas. *Wildl. Soc. Bull.* 33:1363-1374.
- Weir, B.S., and C.C. Cockerham. 1984. Estimating *F*-statistics for the analysis of population structure. *Evolution* 38:1358-1370.
- Welch, H.E., M.A. Bergmann, T.D. Siferd, K.A. Martin, M.F. Curtis, R.E. Crawford, R.J. Conover, and H. Hop. 1992. Energy flow through the marine ecosystem of the Lancaster Sound Region, Arctic Canada. *Arctic* 45:343-357.
- Wildlife Management Advisory Council (North Slope) and the Aklavik Hunters and Trappers Committee. 2003. Aklavik Inuvialuit describe the status of certain birds and animals on the Yukon North Slope, March, 2003. Compiled by Barney Smith. Final Report. Wildlife Management Advisory Council (North Slope), Whitehorse, Yukon. Available on line: www.taiga.net/wmac/aklavikreport/index.html
- Wimsatt, W.A. 1963. Delayed implantation in the Ursidae, with particular reference to the black bear (*Ursus americanus* Pallas). Pp. 49-76 *in* Delayed implantation. A.C. Enders (ed.). University of Chicago Press, Chicago, IL.
- Wolkers, H., B. Van Bavel, A.E. Derocher, Ø. Wiig, K.M. Kovacs, C. Lydersen, and G. Lindström. 2004. Congener-specific accumulation and food chain transfer of polybrominated diphenyl ethers in two Arctic food chains. *Environ. Sci. Tech.* 38:1667-1674.

14. BIOGRAPHICAL SUMMARY OF REPORT WRITERS

Dr. Philip McLoughlin has been an active participant at meetings of the Federal/Provincial/ Territorial Polar Bear Technical Committee (PBTC) for the past 4 years, and recently served as an invited specialist (Canadian delegation) for the 14th Working Group Meeting of the IUCN/SSC Polar Bear Specialist Group (June 20–24, 2005, Seattle, WA). Philip's main interest in polar bears lies in the analysis of mark-recapture data, population viability analysis, and the role of sex-biased harvesting in population management. Philip has published numerous papers on polar bears and grizzly bears in peer-reviewed journals.

Dr. Mitch Taylor has devoted the past 30 years of his life to the scientific study and management of polar bears in Canada. Mitch is author to over 40 peer-reviewed journal articles on the species, largely presenting results of his own field-based research programme. Mitch is also an author of the 2002 COSEWIC update on the status of polar bears in Canada. Mitch is the Manager of the Wildlife Research Section of the Government of Nunavut's Department of Environment, and a long-term member of both the PBTC and IUCN/SSC Polar Bear Specialist Group.

Ms. Martha Dowsley is a Ph.D. candidate in the Department of Geography at McGill University under the supervision of Dr. George Wenzel. Her work examines the governance of common property resources, including polar bears. She is currently examining how Inuit perceptions of polar bears are changing. Her experience in the Arctic includes numerous community consultations with Inuit regarding concerns over polar bear population management, and possible effects of climate change on polar bears. Notably, she has conducted more than 70 interviews with elders and active hunters concerning polar bear management, harvesting, and cultural uses. Martha's research has also included an in-depth review of the Igloodik oral history archives on the traditional use of polar bears by Inuit.

Table 1. Genetic distances among polar bears of subpopulations (see legend of Figure 1 for abbreviations) presented in Paetkau et al. (1999): F_{ST} ($\times 100$) below diagonal, D_{LR} above. Rectangles highlight distances within 4 suggested population clusters by Paetkau et al. (1999). F_{ST} is a correlation of allele frequencies between populations (Weir and Cockerham 1984) and D_{LR} is the mean genotype log likelihood ratio across individuals from the 2 subpopulations (Paetkau et al. 1997). Source: table reprinted from Paetkau et al. (1999) and © 1999 Blackwell Science Ltd.

	WH	FB	DS	BB	KB	LS	GB	MC	VM	NW	NB	SB	CS	FN	SV	EG
WH		0.5	1.4	3.9	3.6	3.9	3.5	5.2	4.4	4.3	5.4	5.9	6.6	5.6	5.0	5.9
FB	0.9		1.1	3.3	3.3	3.9	4.1	4.7	4.7	4.9	6.3	6.4	7.8	5.5	5.3	5.8
DS	2.1	1.4		1.6	2.1	2.6	2.4	2.7	3.0	3.4	3.7	4.6	4.9	3.1	3.2	3.8
BB	5.2	4.4	2.6		0.1	0.9	1.3	1.5	1.7	2.5	3.0	3.5	3.9	2.8	2.7	2.7
KB	5.6	4.8	3.6	0.3		1.1	1.5	1.7	1.7	2.2	2.7	3.3	4.0	3.0	2.3	2.2
LS	5.4	5.2	3.9	1.0	1.1		0.7	0.8	0.8	1.7	2.5	3.4	4.5	3.0	2.8	2.6
GB	4.8	5.1	3.6	1.4	2.1	1.0		1.1	1.3	2.6	2.5	2.8	3.8	2.8	3.0	3.1
MC	5.7	5.2	3.2	0.9	1.3	0.5	1.1		0.9	3.7	2.5	3.7	3.9	2.6	2.4	2.7
VM	6.1	6.3	4.3	1.9	2.4	1.7	1.9	0.8		2.2	1.6	2.3	3.6	2.5	2.6	2.5
NW	6.8	7.5	5.8	3.5	2.5	2.4	3.7	3.9	3.5		3.4	4.3	5.4	4.5	4.4	4.1
NB	8.1	8.9	6.5	3.8	3.8	3.9	3.3	2.7	2.6	5.2		0.5	0.9	1.3	1.0	1.3
SB	8.6	9.1	7.4	4.6	4.9	5.8	4.3	4.2	3.7	6.3	0.5		0.9	1.4	1.8	2.1
CS	9.5	10.8	8.2	5.3	6.0	6.8	5.1	5.0	5.5	7.9	0.8	1.0		1.2	1.1	1.9
FN	8.5	8.4	5.3	3.9	4.6	5.1	4.4	3.3	3.7	6.8	1.4	1.8	1.7		0.0	0.4
SV	7.6	7.9	5.3	3.1	3.2	4.1	3.9	2.5	3.5	5.9	1.0	2.2	1.3	0.2		0.4
EG	8.7	8.8	6.5	3.4	3.2	4.2	4.2	3.0	3.8	5.8	1.4	2.6	2.1	0.8	0.3	

Table 2. Results of the population assignment test of Paetkau et al. (1999) based on microsatellite analysis of individuals sampled from the world's subpopulations of polar bears (abbreviations defined in the legend of Figure 1). Each row contains the samples from a study area ('subpopulation') and the columns indicate the subpopulations to which these samples were 'assigned' (in which their genotypes had the highest likelihood of occurring). For example, of polar bears captured in Davis Strait (DS), 13 animals were correctly assigned to that subpopulation unit by genetic analysis, whereas 18 individuals captured in Davis Strait were assigned to alternate subpopulations. The boxes present the 4 suggested population units by Paetkau et al. (1999), as in Table 1. Source: table reprinted from Paetkau et al. (1999) and © 1999 Blackwell Science Ltd.

	WH	FB	DS	BB	KB	LS	GB	MC	VM	NW	NB	SB	CS	FN	SV	EG	Total
WH	21	6	5											1			33
FB	9	16	3	1	1												30
DS	1	5	13	4	2		2	1			1			1			30
BB			3	13	7	2	1	2					1	1		1	31
KB		1		9	9	2		2		4	1	1				1	30
LS			2	1	2	10	2	5	4	3				1			30
GB	1		1	4	2	3	10	3	3	2		1					30
MC			2				1	2	7	3							15
VM	1		2	1		4	2	1	14	1	4						30
NW	1	1		2	1	3	2		2	17					1		30
NB					1			1	1	1	11	6	6	1	1	1	30
SB							2		2		6	11	3	5		1	30
CS											1	7	15	4	1	2	30
FN	1			1				1	2		3	3	1	8	9	3	32
SV						1	1		2		1		1	5	11	9	31
EG					2				2	1	2	1	3	5	4	11	31

Table 3. Estimated means (and standard errors [SE] in parentheses) of post-den-emergence litter size and age-specific probabilities of litter production (LPR) for available females (i.e., females without cubs or 2-year-old cubs in the year previous) for subpopulations of Canadian polar bears. Source: IUCN/SSC Polar Bear Specialist Group (2006) and PBTC (2007), and primary literature presented in Sections 7.2–7.14.

Subpopulation	Cub (age 0) litter size	Age 4 LPR	Age 5 LPR	Age 6 LPR	Age 7 LPR
Baffin Bay	1.587 (0.073)	0.096 (0.120)	0.881 (0.398)	1.000 (0.167)	1.000 (0.167)
Gulf of Boothia	1.648 (0.098)	0.000 (0)	0.194 (0.178)	0.467 (0.168)	0.965 (0.300)
Kane Basin	1.667 (0.083)	0.000 (0)	0.000 (0)	0.357 (0.731)	0.478 (0.085)
Lancaster Sound	1.688 (0.012)	0.000 (0)	0.107 (0.050)	0.312 (0.210)	0.954 (0.083)
M'Clintock Channel	1.680 (0.147)	0.000 (0)	0.111 (0.101)	0.191 (0.289)	0.928 (0.334)
Northern Beaufort Sea ¹	1.756 (0.166)	0.118 (0.183)	0.283 (0.515)	0.883 (0.622)	0.883 (0.622)
Norwegian Bay	1.714 (0.081)	0.000 (0)	0.000 (0)	0.000 (0)	0.689 (0.534)
Southern Beaufort Sea ²	1.730 (0.050)	0.000 (0)	0.746 (0.042)	0.746 (0.042)	0.746 (0.042)
Southern Hudson Bay	1.575 (0.116)	0.087 (0.202)	0.966 (0.821)	0.967 (0.022)	0.967 (0.022)
Viscount Melville	1.640 (0.125)	0.000 (0)	0.623 (0.414)	0.872 (0.712)	0.872 (0.712)
Western Hudson Bay	1.540 (0.098)	0.000 (0)	0.257 (0.442)	0.950 (0.352)	0.950 (0.022)

¹ Best estimates from standing age capture data. Data are preliminary estimates from ongoing study. See PBTC (2007).

² Translated from mean age-specific recruitment rates for all females.

Table 4. Mean (SE in parentheses) of total (i.e., harvested) annual survival rates for age and sex classes of subpopulations of Canadian polar bears. No unique estimates are available for other subpopulations. Source: see Sections 7.2–7.14 for citations.

Subpopulation	Males				Females			
	Total Survival				Total Survival			
	COY	1-4	5-20	>20	COY	1-4	5-20	>20
Baffin Bay	0.538 (0.094)	0.879 (0.049)	0.923 (0.024)	0.874 (0.062)	0.600 (0.096)	0.901 (0.045)	0.940 (0.021)	0.913 (0.047)
Gulf of Boothia	0.817 (0.201)	0.875 (0.085)	0.935 (0.040)	0.935 (0.040)	0.817 (0.201)	0.875 (0.085)	0.935 (0.040)	0.935 (0.040)
Kane Basin	0.308 (0.172)	0.617 (0.180)	0.957 (0.046)	0.957 (0.046)	0.374 (0.180)	0.686 (0.157)	0.967 (0.043)	0.967 (0.043)
Lancaster Sound ¹	0.633 (0.123)	0.790 (0.073)	0.892 (0.030)	0.653 (0.085)	0.749 (0.105)	0.879 (0.050)	0.936 (0.019)	0.758 (0.054)
M'Clintock Channel	0.620 (0.15)	0.900 (0.04)	0.880 (0.04)	0.880 (0.04)	0.620 (0.15)	0.900 (0.04)	0.900 (0.04)	0.900 (0.04)
Norwegian Bay ¹	0.633 (0.123)	0.790 (0.073)	0.892 (0.030)	0.653 (0.085)	0.749 (0.105)	0.879 (0.050)	0.936 (0.019)	0.758 (0.054)
Southern Beaufort Sea	0.430 (0.110)	0.920 (0.040)	0.920 (0.040)	0.920 (0.040)	0.430 (0.110)	0.920 (0.040)	0.920 (0.040)	0.920 (0.040)
Viscount Melville	0.448 (0.216)	0.774 (0.081)	0.774 (0.081)	0.774 (0.081)	0.693 (0.183)	0.905 (0.026)	0.905 (0.026)	0.905 (0.026)
Western Hudson Bay ²	0.620 (0.020)	0.810 (0.015)	0.900 (0.005)	0.750 (0.020)	0.700 (0.020)	0.860 (0.015)	0.930 (0.005)	0.810 (0.015)

¹ Survival estimates pooled for Lancaster Sound and Norwegian Bay (see Sections 7.4 and 7.5).

² Regehr et al. (2007) present total apparent survival rates for Western Hudson Bay polar bears as 95% CI. Estimated SE is the difference between the estimate and upper CL, divided by 1.96. Survival rates presented for subadults and senescent adults are those that are not reduced from capture events around Churchill (see Regehr et al. [2007]).

Table 5. Mean (SE in parentheses) of natural (i.e., unharvested) annual survival rates for age and sex classes of subpopulations of Canadian polar bears. No unique estimates are available for other subpopulations. Survival of yearlings is combined with survival of subadults for most subpopulations, except Western Hudson Bay (see footnote). Source: IUCN/SSC Polar Bear Specialist Group (2006) and PBTC (2007), and citations presented in Sections 7.2–7.14.

Subpopulation	Males				Females			
	Natural Survival				Natural Survival			
	COY	1-4	5-20	>20	COY	1-4	5-20	>20
Baffin Bay	0.570 (0.094)	0.938 (0.045)	0.947 (0.022)	0.887 (0.060)	0.620 (0.095)	0.938 (0.042)	0.953 (0.020)	0.919 (0.050)
Gulf of Boothia	0.817 (0.201)	0.907 (0.084)	0.959 (0.039)	0.959 (0.039)	0.817 (0.201)	0.907 (0.084)	0.959 (0.039)	0.959 (0.039)
Kane Basin	0.345 (0.200)	0.663 (0.197)	0.997 (0.026)	0.997 (0.026)	0.410 (0.200)	0.756 (0.159)	0.997 (0.026)	0.997 (0.026)
Lancaster Sound ¹	0.634 (0.123)	0.838 (0.075)	0.974 (0.030)	0.715 (0.095)	0.750 (0.104)	0.898 (0.005)	0.946 (0.018)	0.771 (0.054)
M'Clintock Channel	0.619 (0.151)	0.983 (0.034)	0.977 (0.033)	0.977 (0.033)	0.619 (0.151)	0.983 (0.034)	0.921 (0.046)	0.921 (0.046)
Norwegian Bay ¹	0.634 (0.123)	0.838 (0.075)	0.974 (0.030)	0.715 (0.095)	0.750 (0.104)	0.898 (0.005)	0.946 (0.018)	0.771 (0.054)
Southern Beaufort Sea ²	0.430 (0.11)	0.930 (0.040)	0.930 (0.040)	0.930 (0.040)	0.430 (0.11)	0.930 (0.040)	0.930 (0.040)	0.930 (0.040)
Viscount Melville	0.448 (0.216)	0.924 (0.109)	0.924 (0.109)	0.924 (0.109)	0.693 (0.183)	0.957 (0.028)	0.957 (0.028)	0.957 (0.028)
Western Hudson Bay ²	0.500 (0.033)	0.870 (0.026)	0.940 (0.010)	0.780 (0.023)	0.610 (0.028)	0.920 (0.020)	0.940 (0.008)	0.810 (0.020)

¹ Survival estimates pooled for Lancaster Sound and Norwegian Bay (see Sections 7.4 and 7.5)..

² Based on survival rates provided by E. Regher (USGS, Alaska Science Centre, Anchorage, AK). For Western Hudson Bay, both cub and yearling survival rates are 0.50 for males and 0.610 for females; subadult survival (ages 2-4) from Western Hudson Bay is 0.870.

Table 6. Status of subpopulations of polar bears within or shared by Canada. Source: see Sections 7.1–7.14 for details and citations.

Subpopulation	Previous Estimate		Current Estimate		Human-Caused Mortality ^a		PVA (Current Estimate) ^b		
	No. of bears (year of estimate)	±2 SE	No. of bears (year of estimate)	±2 SE	Identified permitted harvest (bears/year)	5-year mean kill in bears/year (2001-2006)	Likelihood ^c of any decline	Likelihood of >30% decline	Finite rate of increase (λ ± 1 SE)
Baffin Bay	2074 (1998)	1544 - 2604	1546 (2004)	690 - 2402	105 + Greenland	220.6	0.999	0.996	0.747 ± 0.343
Davis Strait	1400 (1980)	n/a	2100 (2006)	n/a	52 + Greenland, Québec	58.6	n/a	n/a	n/a
Foxe Basin	2119 (1996)	1421 - 2817	2300 (2004) ^d	1780 – 2820 ^e	106 + Québec	98.0	n/a	n/a	n/a
Gulf of Boothia	n/a	n/a	1528 (2000)	953 - 2093	74	50.6	0.079	0.051	1.048 ± 0.049
Kane Basin	n/a	n/a	164 (1998)	94 -234	5 + Greenland	13.8	0.999	0.999	0.954 ± 0.025
Lancaster Sound	1031 (1979) ^f	795 - 1267	2541 (1998)	1759 - 3323	85	77.8	0.386	0.281	1.003 ± 0.024
M'Clintock Channel	700 (1978)	n/a	284 (2000)	166 - 402	3	1.2	<0.001	0.001	1.021 ± 0.010
Northern Beaufort Sea	1200 (1986)	n/a	n/a	n/a	65	35.4	n/a	n/a	n/a
Norwegian Bay	n/a	n/a	190 (1998)	102 - 278	4	2.4	0.697	0.527	0.951 ± 0.179
Southern Beaufort Sea	1800 (1983)	1300 – 2500 ^e	1526 (2006)	1211 - 1841	81	53.0	0.999	0.964	0.967 ± 0.014
Southern Hudson Bay	1058 (1986)	618 - 1498	1025 (2005)	565 - 1485	25 + Ontario, Québec	40.0	n/a	n/a	n/a
Viscount Melville Sound	161 (1993)	121 - 201	215 (1996)	99 - 331	7	4.4	0.074	0.063	1.054 ± 0.032
Western Hudson Bay	1194 (1987)	1020 - 1368	935 (2005)	794 - 1076	56 + Manitoba	46.4	0.999	0.991 ^g	0.922 ± 0.097
TOTAL	Current estimate 15500 (min 10250, max 20700)^g				>668	702.2	n/a	n/a	n/a

^a The identified permitted harvest includes the maximum harvest that is presently allowed by jurisdictions with an identified quota. Where bears are harvested without quota the jurisdiction(s) without a dedicated quota (named) will add kills to the identified quota. Greenland has, as of January, 2006, identified a quota of 100 bears for "West Greenland", but how kills will be apportioned among the subpopulations of Baffin Bay, Kane Basin, and Davis Strait is unknown. Historic harvest of these subpopulations by Greenland (PBTC 2007) suggests that a breakdown of 80-85, 10-20, and <5 bears, respectively, would be reasonable.

^b Results of population viability analyses (PVA) are presented as: 1) the proportion of simulation runs using the RISKMAN model resulting in any and >30% decline after 45 years of simulation (i.e., 3 generations of polar bears), using 2,500 simulations to develop distributions, and 2) the geometric mean finite rate of population increase (± 1 SE) associated with any given simulation. The likelihood of population decline converges on a single percentage without error after running a large number of simulations (>1,000 simulations), and so no error estimate is applicable to likelihood of decline. See Section 7.1 for details on how simulations were conducted.

^c One minus the likelihood of any decline is the likelihood of population increase.

^d Derived from ATK and the expectation that the population increased under past rates of harvest.

^e Estimated minimum and maximum range only.

^f Underestimate because the 1979 study area (Schweinsburg et al. 1982) differs substantially from that used to determine the 1998 estimate (Taylor et al. 2006b). The study area of Taylor et al. (2006b) is much larger and extends further to the west, north, and south of Lancaster Sound, although Taylor et al. (2006b) exclude portions of northern Baffin Bay included in the assessment of Schweinsburg et al. (1982).

^g Sum total of most recent population means. The range of minimum and maximum is approximate and based on confidence intervals.



Figure 1. Circumpolar distribution of the polar bear. Abbreviations of delineated subpopulations include Viscount Melville Sound (VM), Norwegian Bay (NW), Kane Basin (KB), Lancaster Sound (LS), Baffin Bay (BB), Davis Strait (DS) Southern Hudson Bay (SH), Western Hudson Bay (WH), Foxy Basin (FB), Gulf of Boothia (GB), M'Clintock Channel (MC), Southern Beaufort Sea (SB), and Northern Beaufort Sea (NB). Source: IUCN/SSC Polar Bear Specialist Group (2006).

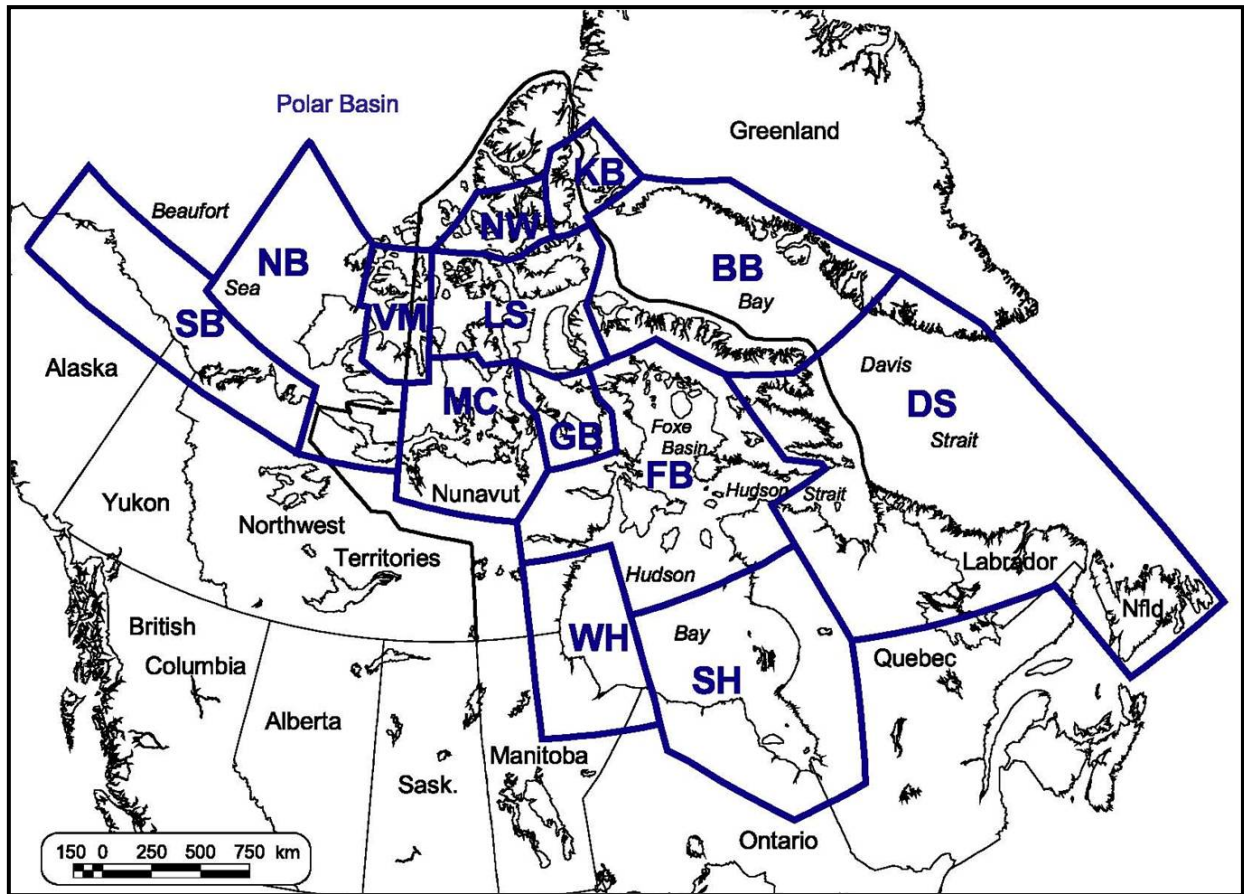


Figure 2. Canadian subpopulations of polar bears. Abbreviations of delineated subpopulations include Viscount Melville Sound (VM), Norwegian Bay (NW), Kane Basin (KB), Lancaster Sound (LS), Baffin Bay (BB), Davis Strait (DS) Southern Hudson Bay (SH), Western Hudson Bay (WH), Foxye Basin (FB), Gulf of Boothia (GB), M'Clintock Channel (MC), Southern Beaufort Sea (SB), and Northern Beaufort Sea (NB). Source: Taylor et al. (2001) and PBTC (2007).



Figure 3. The extent of occurrence (bold polygon, $9.1 \times 10^6 \text{ km}^2$) and area of occupancy (shaded region, $5.6 \times 10^6 \text{ km}^2$) of polar bears in Canada (areas estimated using Lambert Equal-Area Azimuthal [North Pole] projection in ArcGIS, v. 9.1 [ESRI, 380 New York Street, Redlands, CA]). The extent of occurrence as defined by COSEWIC (COSEWIC's Assessment Process and Criteria, reviewed and approved by COSEWIC in April 2006) is: "the area included in a polygon without concave angles that encompasses the geographic distribution of all known populations of a species (up to and including the international border)." The "area of occupancy" is defined as the: "area within 'extent of occurrence' that is occupied by a taxon, excluding cases of vagrancy."

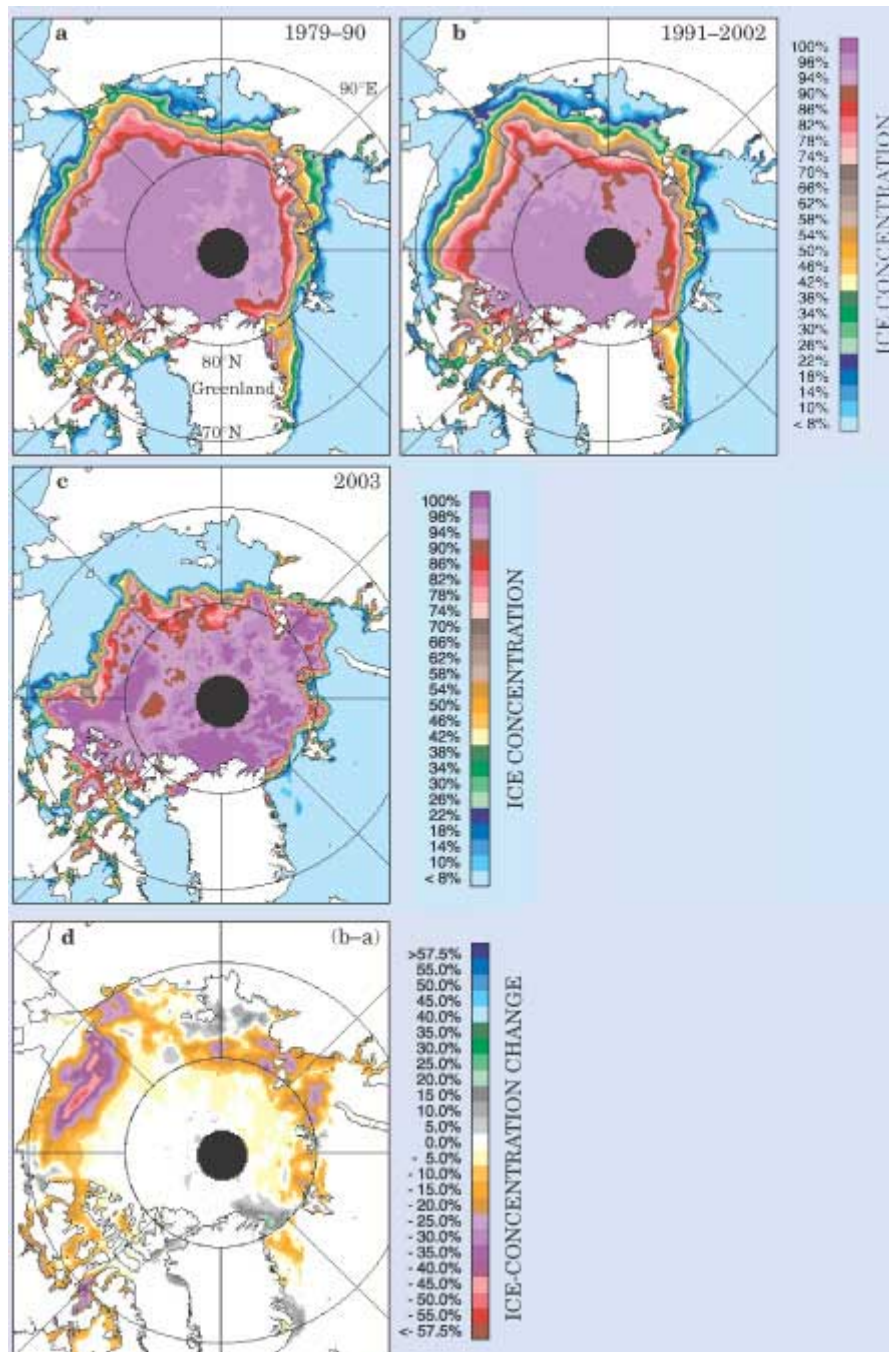


Figure 4. Ice concentrations at their minimum extents in summer recorded over a 24-year span. Panels a and b display the average minima recorded during the years 1979–90 and 1991–2002, respectively. Panel c shows the minimum concentration recorded in 2003. Ice concentrations are measurable down to 8%, below which it is impossible to discriminate between open water and ice-covered areas. Panel d, the difference between the first 2 panels ($b - a$), reveals the changes between the 2 periods. The average size of the ice pack in 1979–90 is greater than that in 1991–2002 by about 12%. Source: reproduced from Comiso and Parkinson (2004) and © 2004 the American Institute of Physics.

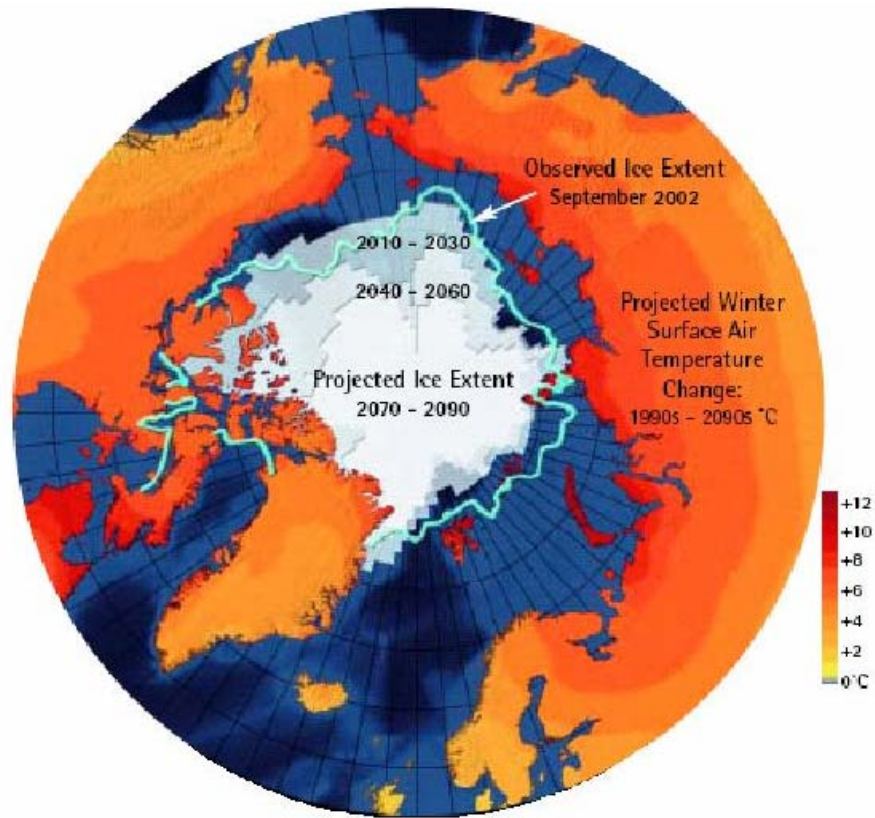


Figure 5. Current and model-averaged projected decreases in extent of sea ice in September as presented by ACIA (2004). Source: ACIA (2004) and © Arctic Climate Impact Assessment.